



# CONSTRUCTION ALERT

## CAMPBELL DRIVE AND FLORIDA'S TURNPIKE INTERCHANGE MODIFICATION PROJECT



The contractor for the Campbell Drive and Florida's Turnpike Interchange Modification project will perform an closure of southbound SW 152nd Avenue/Kingsman Road (east of the Turnpike) between Campbell Drive/SW 312th Street and 400 feet south of Campbell Drive/SW 312th Street from 10 a.m. to 3 p.m., Friday, June 29. The closure is necessary to perform milling and resurfacing.

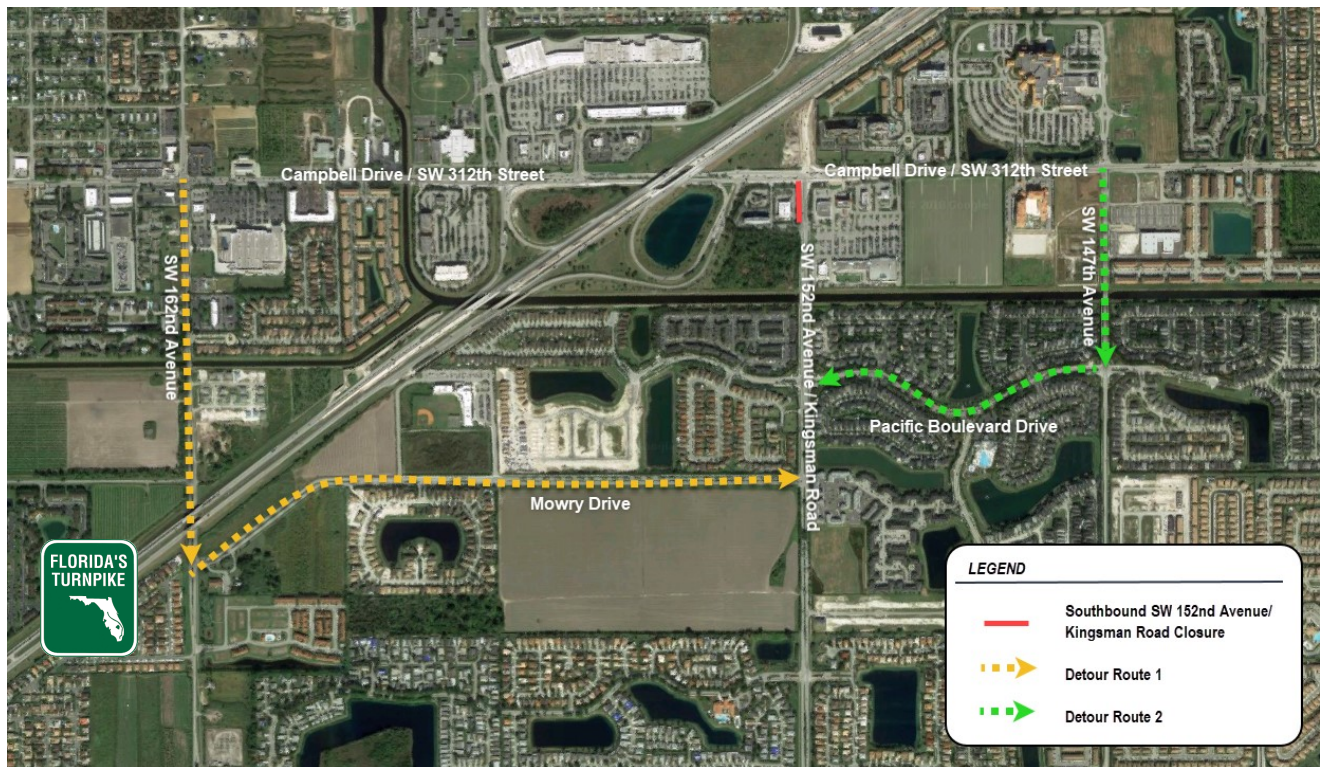
In order to safely perform the work, traffic will be detoured as follows:

**Motorists wishing to access southbound SW 152nd Avenue traveling eastbound on Campbell Drive will**

- o Detour Route 1: Travel south on SW 162nd Avenue to Mowry Drive, travel east on Mowry Drive to SW 152nd Avenue.
- o Detour Route 2: Travel east on Campbell Drive to SW 147th Avenue, then travel south on SW 147th Avenue to Pacific Boulevard Drive to SW 152nd Avenue.

**Motorists wishing to access southbound SW 152nd Avenue traveling westbound on Campbell Drive will**

- o Detour Route 1: Travel south on SW 147th Avenue , travel west on Pacific Boulevard Drive to SW 152nd Avenue.
- o Detour Route 2: Travel west on Campbell Drive to SW 162nd Avenue, travel south on SW 162nd Avenue to Mowry Drive, then travel east Mowry Drive to SW 152nd Avenue.



### PUBLIC INFORMATION

To receive future construction updates via e-mail, please contact:  
[yasir.mercado@dot.state.fl.us](mailto:yasir.mercado@dot.state.fl.us)

Yasir Mercado, Public Information Officer  
 954-934-1138 or 1-800-749-PIKE  
[Yasir.Mercado@dot.state.fl.us](mailto:Yasir.Mercado@dot.state.fl.us)  
[www.FloridasTurnpike.com](http://www.FloridasTurnpike.com)

