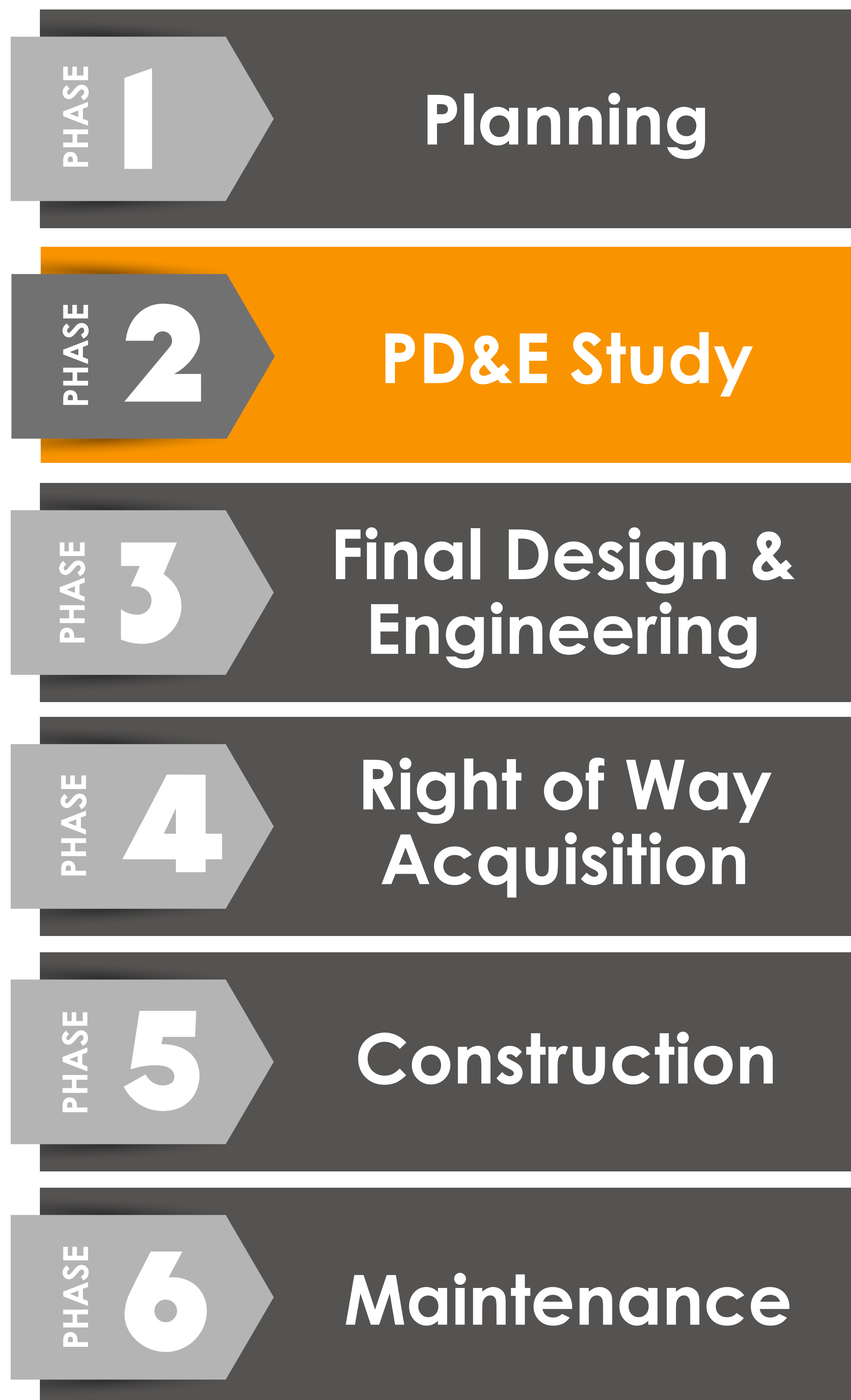


PD&E STUDY PROCESS

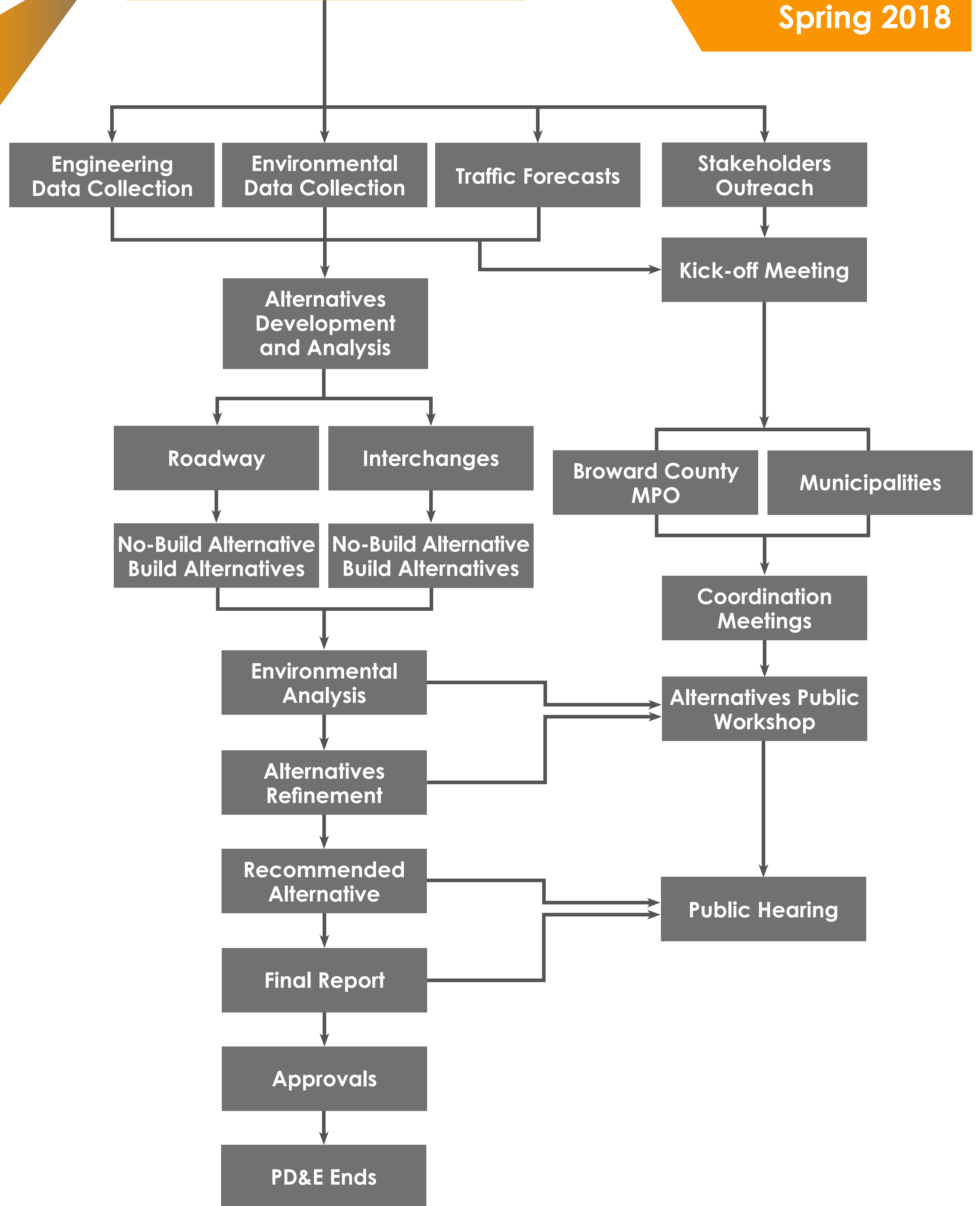
TRANSPORTATION DEVELOPMENT PROCESS



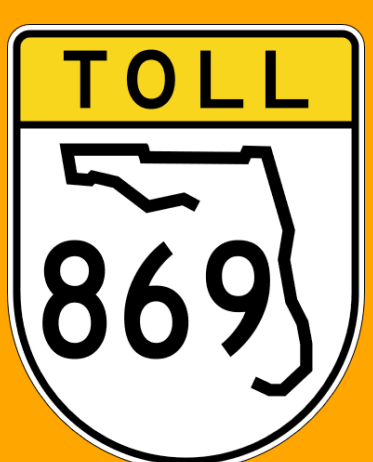
PHASE 2

PHASE 2 PD&E Study

Start Date: Spring 2016
Completion Date: Spring 2018



Public Kick-off Meeting
Fort Lauderdale Marriott Coral Springs Hotel
11775 Heron Bay Boulevard
Coral Springs, Florida 33076
Tuesday, November 15, 2016
5:30 PM - 7:30 PM



SAWGRASS EXPRESSWAY

PROJECT DEVELOPMENT & ENVIRONMENT (PD&E) STUDY

SAWGRASS EXPRESSWAY (SR 869) WIDENING
FROM SOUTH OF US 441 (SR 7) TO POWERLINE ROAD (SR 845)
MILEPOST 18.0-22.0
FINANCIAL PROJECT ID NUMBER: 437153-1-22-01