

**Florida's Turnpike System
SunPass Participation (Percent of Transactions)**

Turnpike Facility	SunPass Participation			June 2013 SunPass Participation
	FY 2013	FY 2012	Change	
HEFT	89%	90%	(1%)	88%
Southern Coin System	80	79	1	80
Ticket System	80	78	3	80
Northern Coin System	70	67	4	68
Beachline West Expressway	69	65	6	69
Total Mainline	82%	81%	1%	81%
Sawgrass Expressway	86	85	1	87
Seminole Expressway	80	76	5	80
Veterans Expressway	78	74	5	79
Southern Connector Extension	75	72	4	76
Polk Parkway	70	64	9	71
Suncoast Parkway	78	74	5	78
Western Beltway, Part C	69	64	8	68
Total Expansion Projects	80%	76%	5%	80%
Total System	81%	79%	3%	81%

Source: Turnpike Enterprise Finance Office.

**SunPass Transactions and Participation
FY 2013**

Turnpike Facility	Annual Transactions (000)			Participation
	SunPass	Non-SunPass	Total	
HEFT	157,035,758	19,662,278	176,698,036	89%
Southern Coin System	106,491,023	26,304,435	132,795,458	80
Ticket System	35,869,351	9,058,798	44,928,149	80
Northern Coin System	43,813,293	19,105,542	62,918,835	70
Beachline West Expressway	17,567,145	7,948,840	25,515,985	69
Sawgrass Expressway	62,299,889	9,895,333	72,195,222	86
Seminole Expressway	24,646,077	6,172,941	30,819,018	80
Veterans Expressway	38,871,986	10,670,123	49,542,109	78
Southern Connector Extension	6,583,963	2,188,990	8,772,953	75
Polk Parkway	18,466,120	7,884,234	26,350,354	70
Suncoast Parkway	20,527,627	5,866,459	26,394,086	78
Western Beltway, Part C	4,403,949	1,932,811	6,336,760	69
Total	536,576,181	126,690,784	663,266,965	81%

Source: Turnpike Enterprise Finance Office.

Florida's Turnpike System
Quarterly SunPass Toll Revenue (\$000)
FY 2013 vs. FY 2012

Months	FY 2013	FY 2012	Variance	
			Amount	Change
July	\$47,122,205	\$35,657,117	\$11,465,088	32.2%
August	47,927,867	36,249,446	11,678,421	32.2
September	44,615,164	34,915,395	9,699,769	27.8
1st Quarter Subtotal	139,665,236	106,821,958	32,843,278	30.7
October	49,113,890	36,256,263	12,857,627	35.5
November	48,141,123	36,646,974	11,494,149	31.4
December	47,838,694	37,290,531	10,548,163	28.3
2nd Quarter Subtotal	145,093,707	110,193,768	34,899,939	31.7
January	48,869,032	36,324,712	12,544,320	34.5
February	45,548,816	36,099,704	9,449,112	26.2
March	51,738,653	40,342,562	11,396,091	28.2
3rd Quarter Subtotal	146,156,501	112,766,978	33,389,523	29.6
April	49,195,993	37,243,410	11,952,583	32.1
May	51,204,891	38,523,192	12,681,699	32.9
June	46,962,011	38,326,994	8,635,017	22.5
4th Quarter Subtotal	147,362,895	114,093,596	33,269,299	29.2
Annual Total	\$578,278,339	\$443,876,300	\$134,402,039	30.3%

Source: Turnpike Enterprise Finance Office.

HEFT
SunPass Transactions and Participation
FY 2013

Month	Number of Transactions (000)			SunPass Participation
	SunPass	Non-SunPass	Total	
July, 2012	12,874	1,538	14,412	89.3%
August	13,075	1,591	14,666	89.2
September	12,618	1,488	14,106	89.5
October	13,549	1,615	15,164	89.3
November	13,056	1,622	14,678	88.9
December	12,857	1,679	14,536	88.4
January, 2013	13,205	1,670	14,875	88.8
February	12,526	1,624	14,150	88.5
March	13,688	1,811	15,499	88.3
April	13,406	1,662	15,068	89.0
May	13,543	1,678	15,221	89.0
June	12,639	1,684	14,323	88.2
Total	157,036	19,662	176,698	88.9%

Source: Turnpike Enterprise Finance Office.

HEFT
Quarterly SunPass Revenue Results
FY 2013 vs. FY 2012

Months	FY 2013	FY 2012	Variance	
			Amount	Change
July	\$11,205,294	\$7,602,187	\$3,603,107	47.4%
August	11,362,896	7,855,187	3,507,709	44.7
September	10,888,520	7,597,827	3,290,693	43.3
1st Quarter Subtotal	33,456,710	23,055,201	10,401,509	45.1
October	11,715,710	7,742,635	3,973,075	51.3
November	11,294,665	7,731,276	3,563,389	46.1
December	11,080,471	7,704,292	3,376,179	43.8
2nd Quarter Subtotal	34,090,846	23,178,203	10,912,643	47.1
January	11,452,666	7,748,295	3,704,371	47.8
February	10,792,905	7,758,792	3,034,113	39.1
March	11,853,188	8,532,135	3,321,053	38.9
3rd Quarter Subtotal	34,098,759	24,039,222	10,059,537	41.8
April	11,604,855	7,893,087	3,711,768	47.0
May	11,721,800	8,148,765	3,573,035	43.8
June	10,899,372	8,363,399	2,535,973	30.3
4th Quarter Subtotal	34,226,027	24,405,251	9,820,776	40.2
Annual Total	\$135,872,342	\$94,677,877	\$41,194,465	43.5%

Source: Turnpike Enterprise Finance Office.

Southern Coin System
SunPass Transactions and Participation
FY 2013

Month	Number of Transactions (000)			SunPass Participation
	SunPass	Non-SunPass	Total	
July, 2012	8,588	2,206	10,794	79.6%
August	8,715	2,157	10,872	80.2
September	8,348	2,060	10,408	80.2
October	9,104	2,150	11,254	80.9
November	8,820	2,144	10,964	80.4
December	8,752	2,282	11,034	79.3
January, 2013	9,188	2,277	11,465	80.1
February	8,603	2,142	10,745	80.1
March	9,486	2,451	11,937	79.5
April	9,153	2,157	11,310	80.9
May	9,234	2,193	11,427	80.8
June	8,500	2,086	10,586	80.3
Total	106,491	26,305	132,796	80.2%

Source: Turnpike Enterprise Finance Office.

Southern Coin System
Quarterly SunPass Revenue Results
FY 2013 vs. FY 2012

Months	FY 2013	FY 2012	Variance	
			Amount	Change
July	\$7,452,751	\$5,235,488	\$2,217,263	42.4%
August	7,576,970	5,499,038	2,077,932	37.8
September	7,173,262	5,360,916	1,812,346	33.8
1st Quarter Subtotal	22,202,983	16,095,442	6,107,541	37.9
October	7,840,168	5,420,636	2,419,532	44.6
November	7,594,732	5,462,394	2,132,338	39.0
December	7,515,309	5,538,177	1,977,132	35.7
2nd Quarter Subtotal	22,950,209	16,421,207	6,529,002	39.8
January	7,921,712	5,613,995	2,307,717	41.1
February	7,395,509	5,603,715	1,791,794	32.0
March	8,173,566	6,115,387	2,058,179	33.7
3rd Quarter Subtotal	23,490,787	17,333,097	6,157,690	35.5
April	7,879,064	5,639,632	2,239,432	39.7
May	7,982,254	5,774,460	2,207,794	38.2
June	7,319,487	5,878,647	1,440,840	24.5
4th Quarter Subtotal	23,180,805	17,292,739	5,888,066	34.0
Lantana Adjustment *	14,057,465	9,199,046	4,858,419	52.8
Annual Total	\$105,882,249	\$76,341,531	\$29,540,718	38.7%

Source: Turnpike Enterprise Finance Office.

* Amount based on actual two-way revenue traffic at the plaza multiplied by an average adjustment rate.

Ticket System
SunPass Transactions and Participation
FY 2013

Month	Number of Transactions (000)			SunPass Participation
	SunPass	Non-SunPass	Total	
July, 2012	2,878	785	3,663	78.6%
August	2,907	717	3,624	80.2
September	2,709	635	3,344	81.0
October	3,012	668	3,680	81.8
November	3,021	735	3,756	80.4
December	3,022	843	3,865	78.2
January, 2013	3,107	787	3,894	79.8
February	2,886	737	3,623	79.7
March	3,300	923	4,223	78.1
April	2,996	765	3,761	79.7
May	3,180	752	3,932	80.9
June	2,852	711	3,563	80.0
Total	35,870	9,058	44,928	79.8%

Source: Turnpike Enterprise Finance Office.

Ticket System
Quarterly SunPass Revenue Results
FY 2013 vs. FY 2012

Months	FY 2013	FY 2012	Variance	
			Amount	Change
July	\$9,742,135	\$8,758,712	\$983,423	11.2%
August	9,678,531	8,276,926	1,401,605	16.9
September	8,604,714	7,794,261	810,453	10.4
1st Quarter Subtotal	28,025,380	24,829,899	3,195,481	12.9
October	9,765,792	8,411,387	1,354,405	16.1
November	10,158,507	8,888,065	1,270,442	14.3
December	10,174,306	9,168,795	1,005,511	11.0
2nd Quarter Subtotal	30,098,605	26,468,247	3,630,358	13.7
January	9,907,740	8,377,596	1,530,144	18.3
February	8,936,561	8,109,021	827,540	10.2
March	10,906,936	9,637,331	1,269,605	13.2
3rd Quarter Subtotal	29,751,237	26,123,948	3,627,289	13.9
April	9,481,910	8,571,083	910,827	10.6
May	10,717,874	9,027,173	1,690,701	18.7
June	9,667,336	8,627,806	1,039,530	12.0
4th Quarter Subtotal	29,867,120	26,226,062	3,641,058	13.9
Lantana Adjustment*	(14,057,465)	(9,199,046)	(4,858,419)	52.8
Three Lakes Adjustment**	(8,117,595)	(6,135,062)	(1,982,533)	32.3
Total Adjustments	(22,175,060)	(15,334,108)	(6,840,952)	44.6
Annual Total	\$95,567,282	\$88,314,048	\$7,253,234	8.2%

Source: Turnpike Enterprise Finance Office.

* Allocated to Southern Coin System, amount based on actual two-way revenue traffic at the plaza multiplied by an average adjustment rate.

** Allocated to Northern Coin System, amount based on actual two-way revenue traffic at the plaza multiplied by an average adjustment rate.

**Northern Coin System
SunPass Transactions and Participation
FY 2013**

Month	Number of Transactions (000)			SunPass Participation
	SunPass	Non-SunPass	Total	
July, 2012	3,506	1,780	5,286	66.3%
August	3,630	1,550	5,180	70.1
September	3,348	1,373	4,721	70.9
October	3,694	1,488	5,182	71.3
November	3,611	1,553	5,164	69.9
December	3,644	1,671	5,315	68.6
January, 2013	3,658	1,502	5,160	70.9
February	3,431	1,447	4,878	70.3
March	3,926	1,888	5,814	67.5
April	3,770	1,564	5,334	70.7
May	3,926	1,591	5,517	71.2
June	3,669	1,699	5,368	68.3
Total	43,813	19,106	62,919	69.6%

Source: Turnpike Enterprise Finance Office.

Northern Coin System
Quarterly SunPass Revenue Results
FY 2013 vs. 2012

Months	FY 2013	FY 2012	Variance	
			Amount	Change
July	\$4,763,587	\$3,474,906	\$1,288,681	37.1%
August	4,888,234	3,547,776	1,340,458	37.8
September	4,485,939	3,427,362	1,058,577	30.9
1st Quarter Subtotal	14,137,760	10,450,044	3,687,716	35.3
October	4,961,401	3,577,745	1,383,656	38.7
November	4,925,699	3,646,043	1,279,656	35.1
December	4,863,382	3,648,666	1,214,716	33.3
2nd Quarter Subtotal	14,750,482	10,872,454	3,878,028	35.7
January	4,927,147	3,496,144	1,431,003	40.9
February	4,587,365	3,455,420	1,131,945	32.8
March	5,340,668	3,909,937	1,430,731	36.6
3rd Quarter Subtotal	14,855,180	10,861,501	3,993,679	36.8
April	5,078,574	3,660,625	1,417,949	38.7
May	5,347,650	3,777,657	1,569,993	41.6
June	4,935,109	3,816,895	1,118,214	29.3
4th Quarter Subtotal	15,361,333	11,255,177	4,106,156	36.5
Three Lakes Adjustment *	8,117,595	6,135,062	1,982,533	32.3
Annual Total	\$67,222,350	\$49,574,238	\$17,648,112	35.6%

Source: Turnpike Enterprise Finance Office.

* Amount based on actual two-way revenue traffic at the plaza multiplied by an average adjustment rate.

**Beachline West Expressway
SunPass Transactions and Participation
FY 2013**

Month	Number of Transactions (000)			SunPass Participation
	SunPass	Non-SunPass	Total	
July, 2012	1,432	750	2,182	65.6%
August	1,435	669	2,104	68.2
September	1,332	564	1,896	70.3
October	1,523	624	2,147	70.9
November	1,431	619	2,050	69.8
December	1,445	665	2,110	68.5
January, 2013	1,370	661	2,031	67.5
February	1,266	624	1,890	67.0
March	1,662	757	2,419	68.7
April	1,542	667	2,209	69.8
May	1,603	655	2,258	71.0
June	1,526	694	2,220	68.7
Total	17,567	7,949	25,516	68.8%

Source: Turnpike Enterprise Finance Office.

**Beachline West Expressway
Quarterly SunPass Revenue Results
FY 2013 vs. FY 2012**

Months	FY 2013	FY 2012	Variance	
			Amount	Change
July	\$1,145,757	\$715,164	\$430,593	60.2%
August	1,151,188	714,136	437,052	61.2
September	1,063,538	687,406	376,132	54.7
1st Quarter Subtotal	3,360,483	2,116,706	1,243,777	58.8
October	1,217,760	745,030	472,730	63.5
November	1,143,430	730,583	412,847	56.5
December	1,148,208	728,573	419,635	57.6
2nd Quarter Subtotal	3,509,398	2,204,186	1,305,212	59.2
January	1,187,256	727,831	459,425	63.1
February	1,091,964	751,466	340,498	45.3
March	1,323,437	837,356	486,081	58.0
3rd Quarter Subtotal	3,602,657	2,316,653	1,286,004	55.5
April	1,230,873	769,935	460,938	59.9
May	1,277,883	788,256	489,627	62.1
June	1,200,465	817,133	383,332	46.9
4th Quarter Subtotal	3,709,221	2,375,324	1,333,897	56.2
Annual Total	\$14,181,759	\$9,012,869	\$5,168,890	57.4%

Source: Turnpike Enterprise Finance Office.

**Sawgrass Expressway
SunPass Transactions and Participation
FY 2013**

Month	Number of Transactions (000)			SunPass Participation
	SunPass	Non-SunPass	Total	
July, 2012	4,920	808	5,728	85.9%
August	5,117	812	5,929	86.3
September	4,925	761	5,686	86.6
October	5,312	779	6,091	87.2
November	5,123	818	5,941	86.2
December	5,119	919	6,038	84.8
January, 2013	5,309	841	6,150	86.3
February	5,025	820	5,845	86.0
March	5,490	940	6,430	85.4
April	5,414	813	6,227	86.9
May	5,463	809	6,272	87.1
June	5,083	775	5,858	86.8
Total	62,300	9,895	72,195	86.3%

Source: Turnpike Enterprise Finance Office.

Sawgrass Expressway
Quarterly SunPass Revenue Results
FY 2013 vs. FY 2012

Months	FY 2013	FY 2012	Variance	
			Amount	Change
July	\$4,561,145	\$3,325,793	\$1,235,352	37.1%
August	4,705,664	3,479,995	1,225,669	35.2
September	4,406,484	3,405,720	1,000,764	29.4
1st Quarter Subtotal	13,673,293	10,211,508	3,461,785	33.9
October	4,884,633	3,507,737	1,376,896	39.3
November	4,707,436	3,506,832	1,200,604	34.2
December	4,676,712	3,586,521	1,090,191	30.4
2nd Quarter Subtotal	14,268,781	10,601,090	3,667,691	34.6
January	4,896,042	3,565,375	1,330,667	37.3
February	4,628,310	3,565,210	1,063,100	29.8
March	5,100,591	3,813,985	1,286,606	33.7
3rd Quarter Subtotal	14,624,943	10,944,570	3,680,373	33.6
April	4,990,506	3,616,962	1,373,544	38.0
May	5,070,759	3,724,986	1,345,773	36.1
June	4,679,937	3,744,040	935,897	25.0
4th Quarter Subtotal	14,741,202	11,085,988	3,655,214	33.0
Annual Total	\$57,308,219	\$42,843,156	\$14,465,063	33.8%

Source: Turnpike Enterprise Finance Office.

**Seminole Expressway
SunPass Transactions and Participation
FY 2013**

Month	Number of Transactions (000)			SunPass Participation
	SunPass	Non-SunPass	Total	
July, 2012	1,956	548	2,504	78.1%
August	2,062	531	2,593	79.5
September	1,933	478	2,411	80.2
October	2,132	513	2,645	80.6
November	2,011	507	2,518	79.9
December	2,002	527	2,529	79.2
January, 2013	2,039	498	2,537	80.4
February	1,957	479	2,436	80.3
March	2,177	564	2,741	79.4
April	2,165	509	2,674	81.0
May	2,204	520	2,724	80.9
June	2,008	499	2,507	80.1
Total	24,646	6,173	30,819	80.0%

Source: Turnpike Enterprise Finance Office.

**Seminole Expressway
Quarterly SunPass Revenue Results
FY 2013 vs. FY 2012**

Months	FY 2013	FY 2012	Variance	
			Amount	Change
July	\$2,369,837	\$1,776,466	\$593,371	33.4%
August	2,486,706	1,891,251	595,455	31.5
September	2,316,269	1,829,356	486,913	26.6
1st Quarter Subtotal	7,172,812	5,497,073	1,675,739	30.5
October	2,568,420	1,893,400	675,020	35.7
November	2,419,740	1,833,484	586,256	32.0
December	2,365,556	1,858,905	506,651	27.3
2nd Quarter Subtotal	7,353,716	5,585,789	1,767,927	31.7
January	2,465,946	1,838,184	627,762	34.2
February	2,371,971	1,888,796	483,175	25.6
March	2,643,643	2,050,725	592,918	28.9
3rd Quarter Subtotal	7,481,560	5,777,705	1,703,855	29.5
April	2,625,679	1,944,183	681,496	35.1
May	2,672,791	1,983,577	689,214	34.7
June	2,432,315	1,963,797	468,518	23.9
4th Quarter Subtotal	7,730,785	5,891,557	1,839,228	31.2
Annual Total	\$29,738,873	\$22,752,124	\$6,986,749	30.7%

Source: Turnpike Enterprise Finance Office.

**Veterans Expressway
SunPass Transactions and Participation
FY 2013**

Month	Number of Transactions (000)			SunPass Participation
	SunPass	Non-SunPass	Total	
July, 2012	3,160	971	4,131	76.5%
August	3,303	930	4,233	78.0
September	3,101	840	3,941	78.7
October	3,354	871	4,225	79.4
November	3,150	859	4,009	78.6
December	3,232	913	4,145	78.0
January, 2013	3,248	932	4,180	77.7
February	3,067	822	3,889	78.9
March	3,341	948	4,289	77.9
April	3,351	866	4,217	79.5
May	3,422	881	4,303	79.5
June	3,143	837	3,980	79.0
Total	38,872	10,670	49,542	78.5%

Source: Turnpike Enterprise Finance Office.

**Veterans Expressway
Quarterly SunPass Revenue Results
FY 2013 vs. FY 2012**

Months	FY 2013	FY 2012	Variance	
			Amount	Change
July	\$2,588,968	\$1,829,581	\$759,387	41.5%
August	2,694,915	1,938,283	756,632	39.0
September	2,523,135	1,864,384	658,751	35.3
1st Quarter Subtotal	7,807,018	5,632,248	2,174,770	38.6
October	2,726,912	1,914,891	812,021	42.4
November	2,560,714	1,841,282	719,432	39.1
December	2,630,078	1,922,307	707,771	36.8
2nd Quarter Subtotal	7,917,704	5,678,480	2,239,224	39.4
January	2,652,754	1,893,834	758,920	40.1
February	2,488,438	1,878,876	609,562	32.4
March	2,719,362	2,035,836	683,526	33.6
3rd Quarter Subtotal	7,860,554	5,808,546	2,052,008	35.3
April	2,726,564	1,957,024	769,540	39.3
May	2,769,682	2,026,199	743,483	36.7
June	2,517,000	2,049,409	467,591	22.8
4th Quarter Subtotal	8,013,246	6,032,632	1,980,614	32.8
Annual Total	\$31,598,522	\$23,151,906	\$8,446,616	36.5%

Source: Turnpike Enterprise Finance Office.

**Southern Connector Extension
SunPass Transactions and Participation
FY 2013**

Month	Number of Transactions (000)			SunPass Participation
	SunPass	Non-SunPass	Total	
July, 2012	545	204	749	72.8%
August	530	173	703	75.4
September	482	142	624	77.2
October	527	160	687	76.7
November	523	171	694	75.4
December	561	198	759	73.9
January, 2013	538	182	720	74.7
February	511	191	702	72.8
March	640	230	870	73.6
April	583	179	762	76.5
May	582	183	765	76.1
June	562	176	738	76.2
Total	6,584	2,189	8,773	75.0%

Source: Turnpike Enterprise Finance Office.

Southern Connector Extension
Quarterly SunPass Revenue Results
FY 2013 vs. FY 2012

Months	FY 2013	FY 2012	Variance	
			Amount	Change
July	\$406,395	\$230,458	\$175,937	76.3%
August	397,135	222,181	174,954	78.7
September	359,875	208,070	151,805	73.0
1st Quarter Subtotal	1,163,405	660,709	502,696	76.1
October	391,280	218,974	172,306	78.7
November	390,496	217,110	173,386	79.9
December	412,011	234,607	177,404	75.6
2nd Quarter Subtotal	1,193,787	670,691	523,096	78.0
January	406,514	216,172	190,342	88.1
February	386,539	230,626	155,913	67.6
March	479,908	267,326	212,582	79.5
3rd Quarter Subtotal	1,272,961	714,124	558,837	78.3
April	440,366	246,473	193,893	78.7
May	438,285	246,394	191,891	77.9
June	419,232	265,180	154,052	58.1
4th Quarter Subtotal	1,297,883	758,047	539,836	71.2
Annual Total	\$4,928,036	\$2,803,571	\$2,124,465	75.8%

Source: Turnpike Enterprise Finance Office.

**Polk Parkway
SunPass Transactions and Participation
FY 2013**

Month	Number of Transactions (000)			SunPass Participation
	SunPass	Non-SunPass	Total	
July, 2012	1,436	706	2,142	67.0%
August	1,517	679	2,196	69.1
September	1,441	614	2,055	70.1
October	1,582	656	2,238	70.7
November	1,499	639	2,138	70.1
December	1,536	674	2,210	69.5
January, 2013	1,569	640	2,209	71.0
February	1,485	648	2,133	69.6
March	1,631	744	2,375	68.7
April	1,626	647	2,273	71.5
May	1,652	633	2,285	72.3
June	1,492	604	2,096	71.2
Total	18,466	7,884	26,350	70.1%

Source: Turnpike Enterprise Finance Office.

Polk Parkway
Quarterly SunPass Revenue Results
FY 2013 vs. FY 2012

Months	FY 2013	FY 2012	Variance	
			Amount	Change
July	\$1,247,460	\$1,132,179	\$115,281	10.2%
August	1,307,973	1,209,780	98,193	8.1
September	1,220,845	1,180,034	40,811	3.5
1st Quarter Subtotal	3,776,278	3,521,993	254,285	7.2
October	1,350,233	1,225,704	124,529	10.2
November	1,296,628	1,203,773	92,855	7.7
December	1,309,639	1,256,651	52,988	4.2
2nd Quarter Subtotal	3,956,500	3,686,128	270,372	7.3
January	1,350,751	1,249,934	100,817	8.1
February	1,267,282	1,263,585	3,697	0.3
March	1,388,418	1,380,921	7,497	0.5
3rd Quarter Subtotal	4,006,451	3,894,440	112,011	2.9
April	1,378,681	1,281,150	97,531	7.6
May	1,409,512	1,331,251	78,261	5.9
June	1,238,445	1,236,383	2,062	0.2
4th Quarter Subtotal	4,026,638	3,848,784	177,854	4.6
Annual Total	\$15,765,867	\$14,951,345	\$814,522	5.4%

Source: Turnpike Enterprise Finance Office.

**Suncoast Parkway
SunPass Transactions and Participation
FY 2013**

Month	Number of Transactions (000)			SunPass Participation
	SunPass	Non-SunPass	Total	
July, 2012	1,656	522	2,178	76.0%
August	1,719	490	2,209	77.8
September	1,627	457	2,084	78.1
October	1,744	480	2,224	78.4
November	1,691	487	2,178	77.6
December	1,715	512	2,227	77.0
January, 2013	1,723	476	2,199	78.4
February	1,623	460	2,083	77.9
March	1,808	544	2,352	76.9
April	1,761	482	2,243	78.5
May	1,808	493	2,301	78.6
June	1,652	464	2,116	78.1
Total	20,527	5,867	26,394	77.8%

Source: Turnpike Enterprise Finance Office.

Suncoast Parkway
Quarterly SunPass Revenue Results
FY 2013 vs. FY 2012

Months	FY 2013	FY 2012	Variance	
			Amount	Change
July	\$1,287,729	\$1,264,715	\$23,014	1.8%
August	1,327,997	1,299,212	28,785	2.2
September	1,253,551	1,259,667	(6,116)	(0.5)
1st Quarter Subtotal	3,869,277	3,823,594	45,683	1.2
October	1,334,827	1,285,579	49,248	3.8
November	1,303,186	1,278,152	25,034	2.0
December	1,308,750	1,316,752	(8,002)	(0.6)
2nd Quarter Subtotal	3,946,763	3,880,483	66,280	1.7
January	1,321,186	1,274,476	46,710	3.7
February	1,242,626	1,268,866	(26,240)	(2.1)
March	1,391,753	1,390,750	1,003	0.1
3rd Quarter Subtotal	3,955,565	3,934,092	21,473	0.5
April	1,355,042	1,320,834	34,208	2.6
May	1,390,346	1,350,531	39,815	2.9
June	1,273,211	1,235,461	37,750	3.1
4th Quarter Subtotal	4,018,599	3,906,826	111,773	2.9
Annual Total	\$15,790,204	\$15,544,995	\$245,209	1.6%

Source: Turnpike Enterprise Finance Office.

Western Beltway, Part C
SunPass Transactions and Participation
FY 2013

Month	Number of Transactions (000)			SunPass Participation
	SunPass	Non-SunPass	Total	
July, 2012	353	217	570	61.9
August	350	157	507	69.0
September	320	121	441	72.6
October	355	135	490	72.4
November	343	138	481	71.3
December	357	161	518	68.9
January, 2013	375	145	520	72.1
February	358	152	510	70.2
March	418	207	625	66.9
April	396	166	562	70.5
May	398	154	552	72.1
June	381	180	561	67.9
Total	4,404	1,933	6,337	69.5%

Source: Turnpike Enterprise Finance Office.

Western Beltway, Part C
Quarterly SunPass Revenue Results
FY 2013 vs. FY 2012

Months	FY 2013	FY 2012	Variance	
			Amount	Change
July	\$351,146	\$311,469	\$39,677	12.7%
August	349,658	315,681	33,977	10.8
September	319,032	300,392	18,640	6.2
1st Quarter Subtotal	1,019,836	927,542	92,294	10.0
October	356,753	312,546	44,207	14.1
November	345,891	307,979	37,912	12.3
December	354,272	326,285	27,987	8.6
2nd Quarter Subtotal	1,056,916	946,810	110,106	11.6
January	379,319	322,875	56,444	17.5
February	359,347	325,330	34,017	10.5
March	417,182	370,873	46,309	12.5
3rd Quarter Subtotal	1,155,848	1,019,078	136,770	13.4
April	403,878	342,424	61,454	17.9
May	406,053	343,943	62,110	18.1
June	380,105	328,843	51,262	15.6
4th Quarter Subtotal	1,190,036	1,015,210	174,826	17.2
Annual Total	\$4,422,636	\$3,908,640	\$513,996	13.2%

Source: Turnpike Enterprise Finance Office.

**Mainline Seasonal Variation
SunPass Traffic
FY 2013**

Month	Seasonal Factor				
	HEFT	Southern Coin System	Ticket System	Northern Coin System	Beachline West Expressway
July, 2012	0.97	0.95	0.94	0.94	0.96
August	0.98	0.96	0.95	0.98	0.96
September	0.98	0.95	0.92	0.93	0.92
October	1.02	1.01	0.99	0.99	1.02
November	1.01	1.01	1.02	1.00	0.99
December	0.96	0.97	0.99	0.98	0.97
January, 2013	0.99	1.02	1.02	0.98	0.92
February	1.04	1.05	1.05	1.02	0.94
March	1.03	1.05	1.08	1.06	1.11
April	1.04	1.05	1.02	1.05	1.07
May	1.02	1.02	1.04	1.06	1.07
June	0.98	0.97	0.97	1.02	1.06

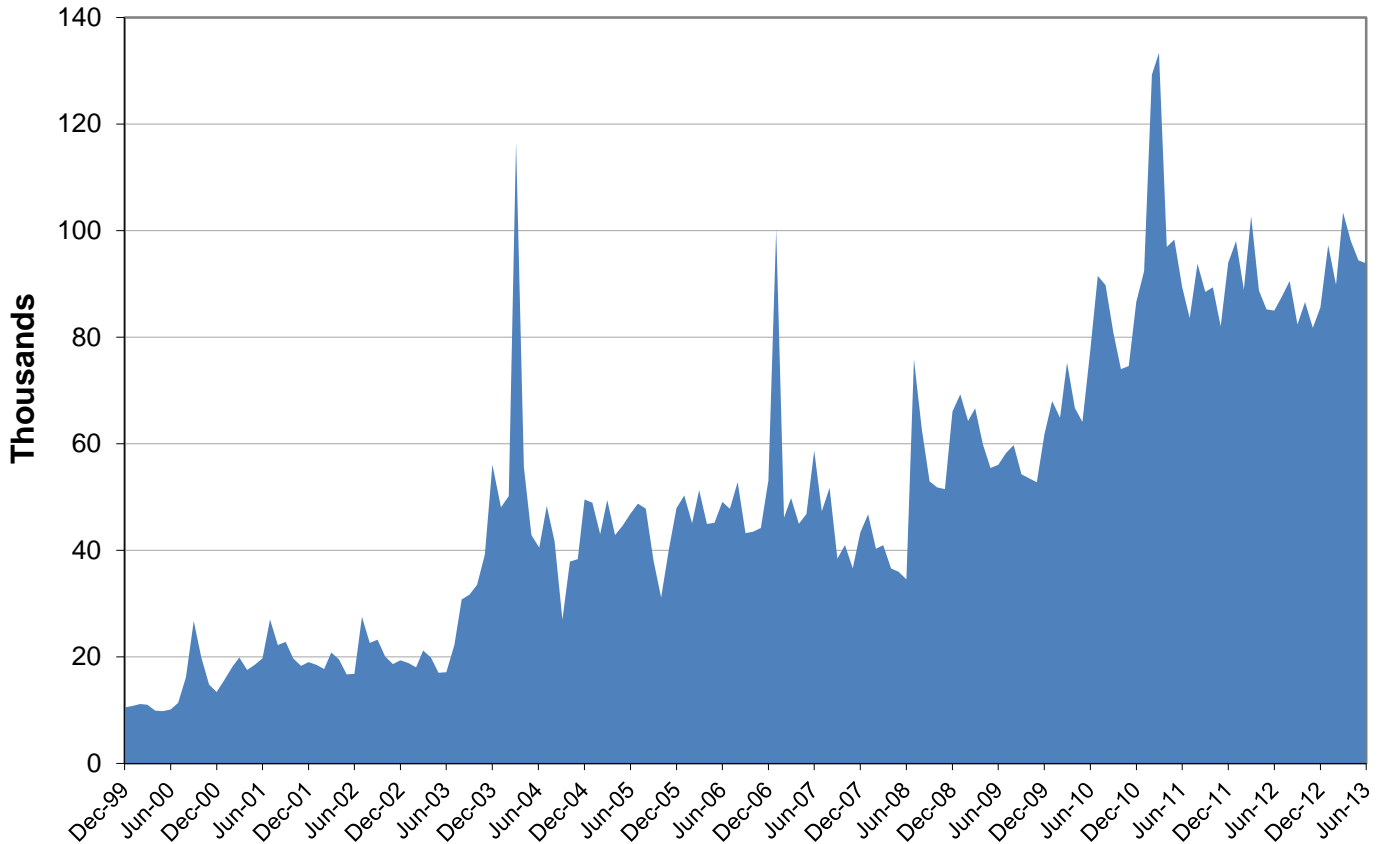
Source: Turnpike Enterprise Finance Office.

**Expansion Projects Seasonal Variation
SunPass Traffic
FY 2013**

Month	Seasonal Factor						
	Sawgrass Expressway	Seminole Expressway	Veterans Expressway	Southern Conn. Ext.	Polk Parkway	Suncoast Parkway	Western Beltway, Part C
July, 2012	0.93	0.93	0.96	0.97	0.92	0.95	0.94
August	0.97	0.99	1.00	0.95	0.97	0.99	0.94
September	0.96	0.95	0.97	0.89	0.95	0.96	0.88
October	1.00	1.02	1.02	0.94	1.01	1.00	0.95
November	1.00	0.99	0.99	0.97	0.99	1.00	0.95
December	0.97	0.96	0.98	1.00	0.98	0.98	0.95
January, 2013	1.00	0.97	0.98	0.96	1.00	0.99	1.00
February	1.05	1.04	1.03	1.01	1.05	1.03	1.06
March	1.04	1.04	1.01	1.14	1.04	1.04	1.12
April	1.06	1.07	1.05	1.08	1.07	1.04	1.09
May	1.03	1.05	1.04	1.04	1.05	1.04	1.06
June	0.99	0.99	0.98	1.04	0.98	0.98	1.05

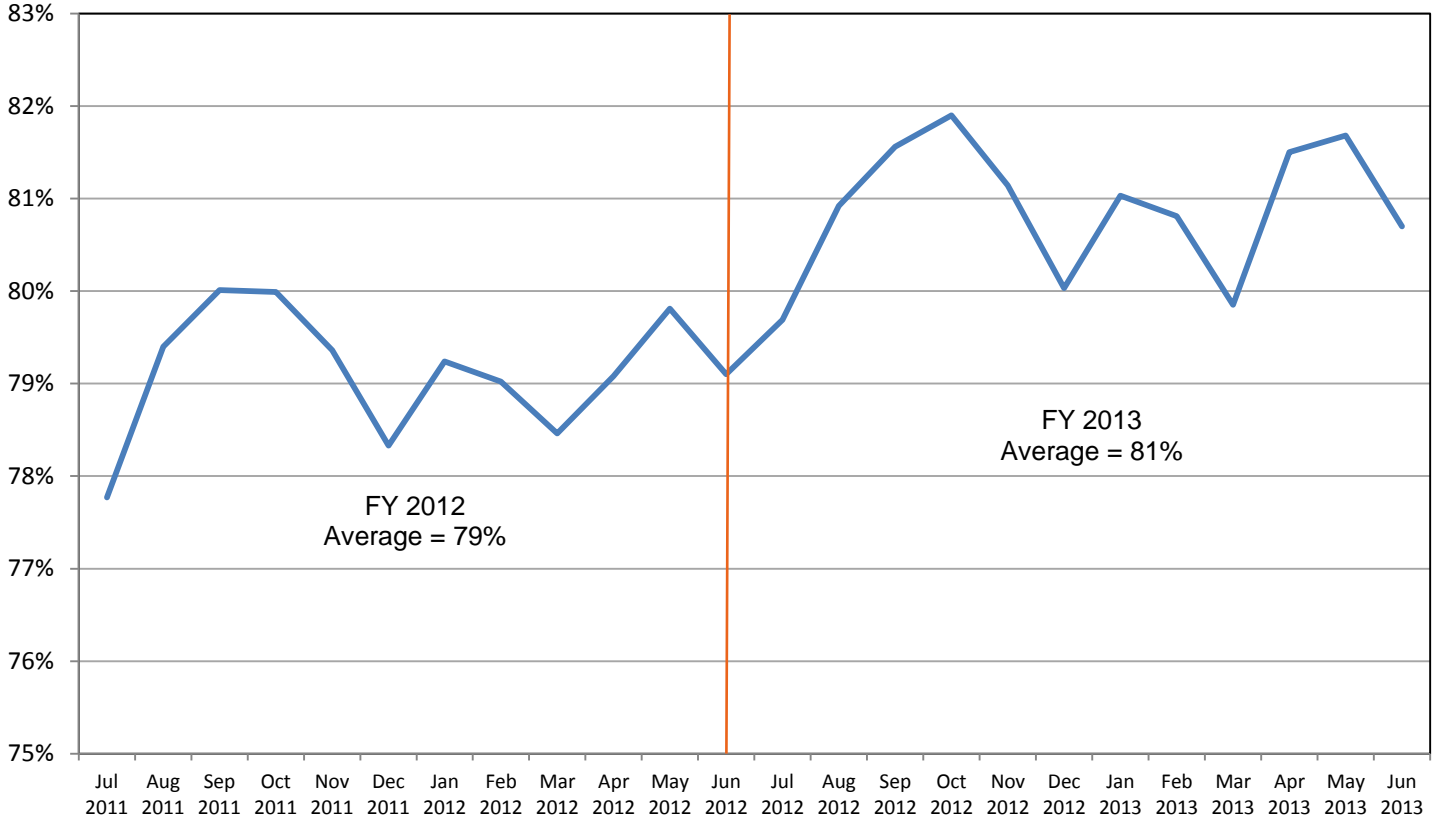
Source: Turnpike Enterprise Finance Office.

Monthly SunPass Transponder Sales Inception to June 2013

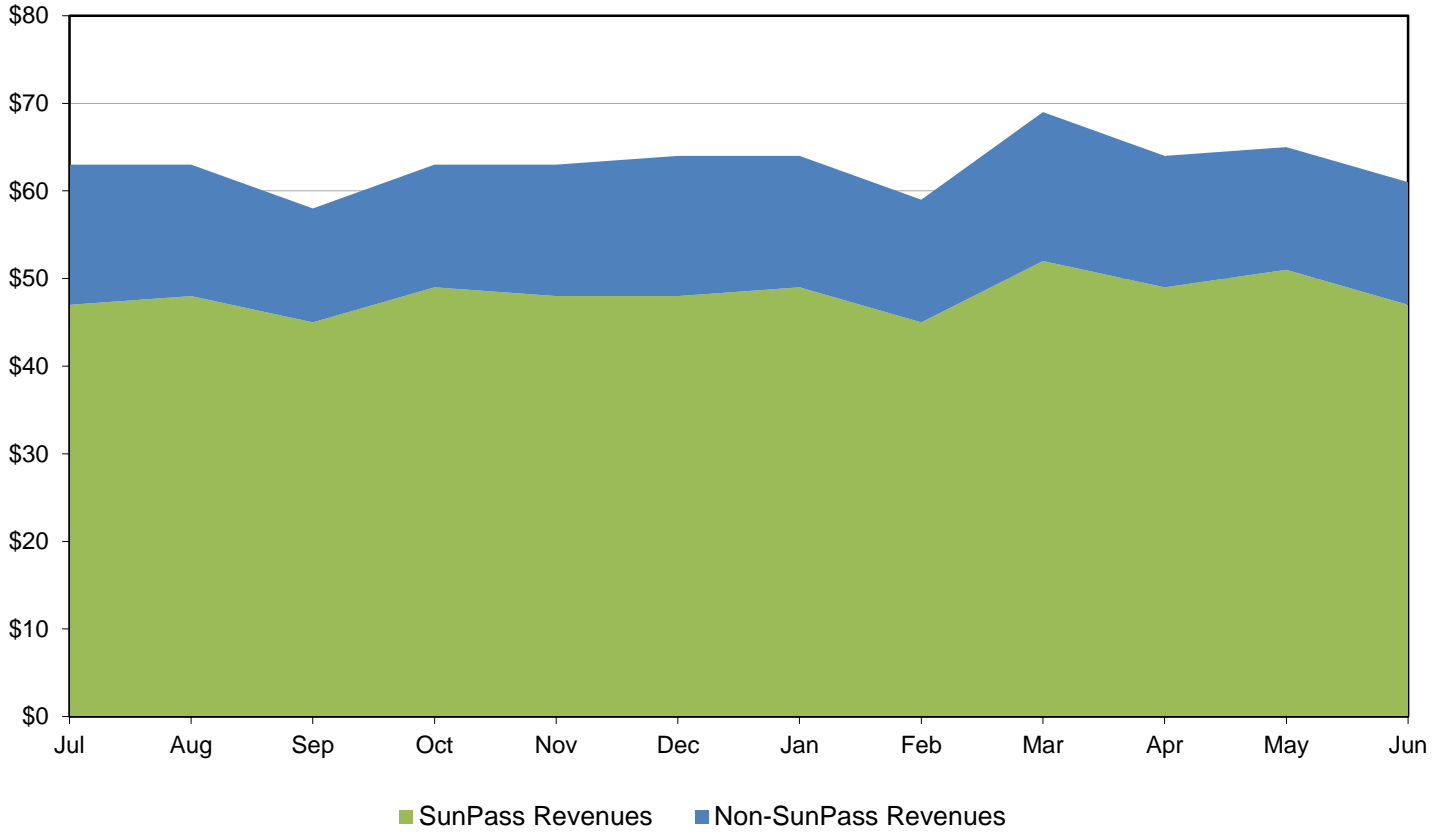


This graph shows the monthly SunPass transponder sales since inception. The significant increase in transponder sales during March 2004 is attributed to the cash toll rate increase implemented on the Turnpike system. A similar spike in sales in January 2007 is due to a one-day, half-off promotion in celebration of Turnpike's 50th anniversary. The successful launch of the Mini Tags in July 2008 boosted the total sales to nearly 76 thousand that month. The addition of Mini Tags has increased the average total monthly sales of transponders by fifty percent. Also, the implementation of All-Electronic Tolling on the HEFT in February 2011 has significantly boosted transponder sales, as well as the June 2012 toll rate increase.

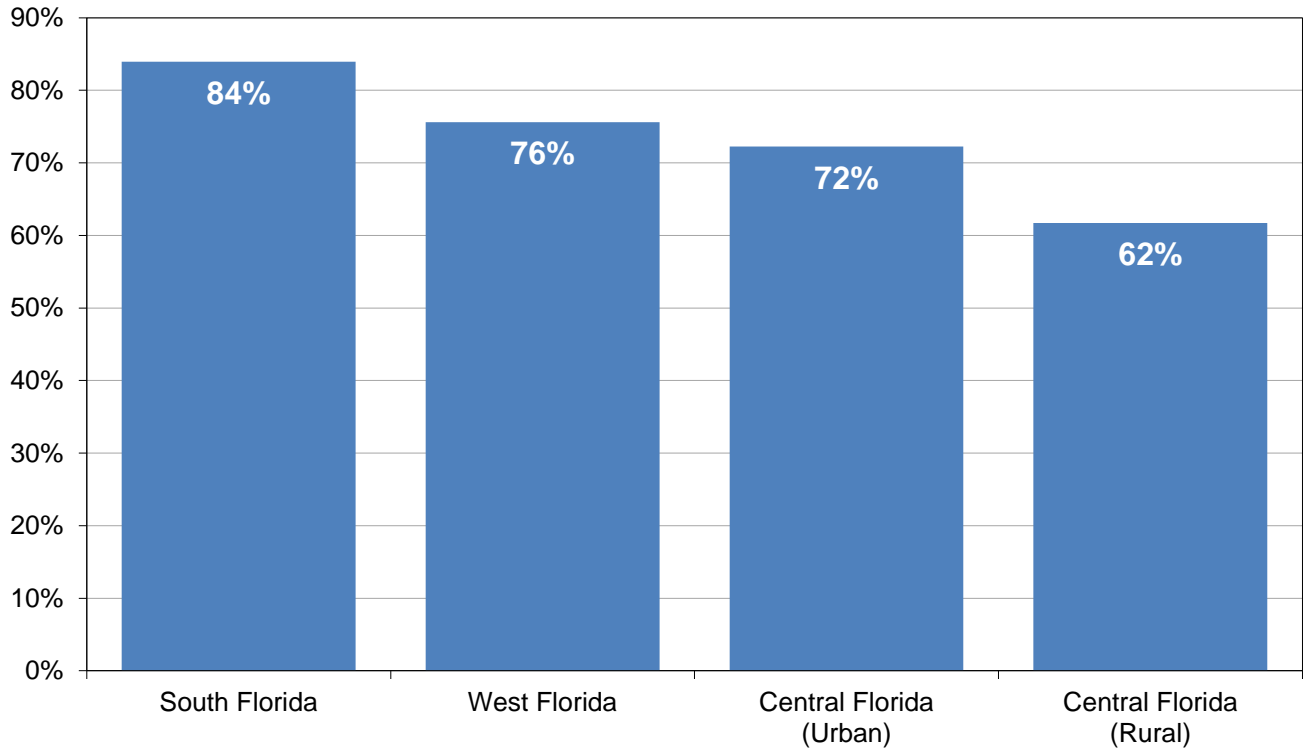
SunPass Participation by Month FY 2012 and 2013



Toll Revenue by Payment Type FY 2013

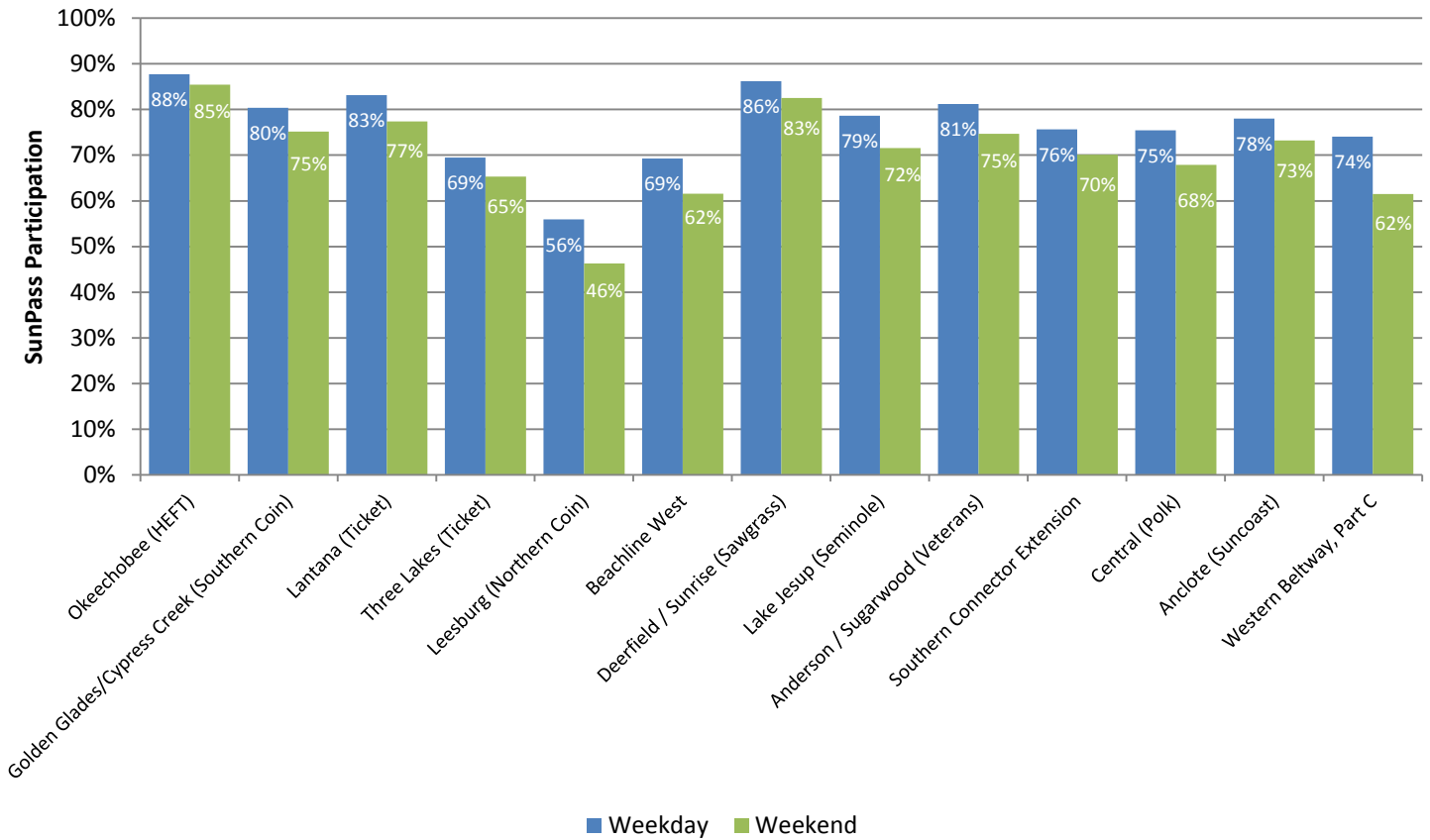


**Turnpike System
SunPass Participation by Region
FY 2013**



This graph depicts the average SunPass participation on the Turnpike System by region during FY 2013. As expected, SunPass participation in the region with mostly commuters was the highest (South Florida at 84 percent). On the other hand, SunPass participation in the tourist-oriented rural region of Central Florida was the lowest at 62 percent.

Select Turnpike Mainline Toll Plazas Weekday vs. Weekend SunPass Participation

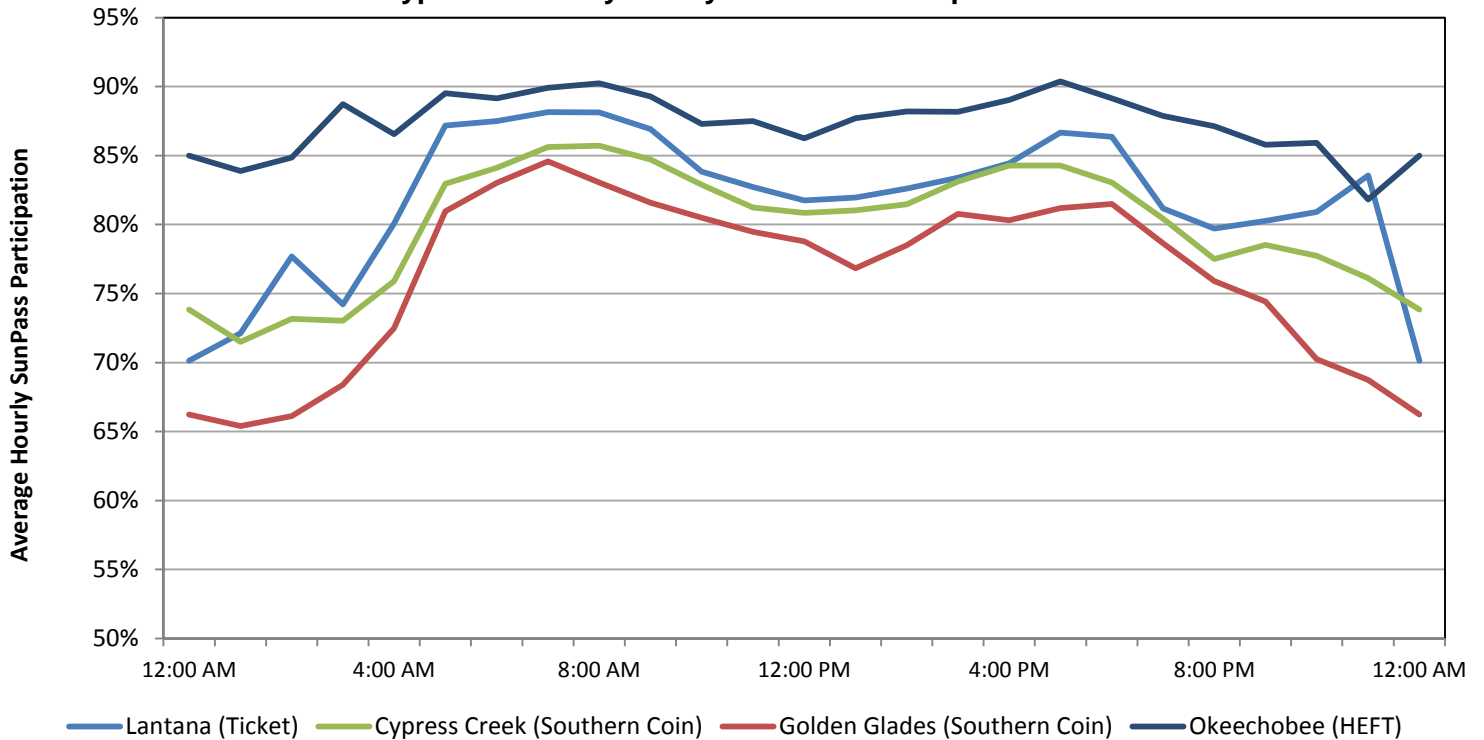


Source: Data obtained from Turnpike Enterprise Finance Office for the week beginning Monday, June 24, 2013.

A comparison between average weekday and weekend SunPass participation for a typical week in FY 2013 at select mainline plazas is presented in the graph above.

As expected, average participation during weekdays exceeds weekend participation at each mainline plaza. SunPass participation at the Okeechobee mainline toll plaza, an All-Electronic Tolling location, reaches 88 percent during weekdays (the highest among all the facilities) and drops to 85 percent on the weekend. In particular, most of the commuter facilities, such as Southern Coin System, southern part of the Ticket System (Lantana), Seminole Expressway and the Veterans Expressway show a notable variation between weekday and weekend participation.

Mainline Toll Plazas – Southern Facilities Typical Weekday Hourly SunPass Participation

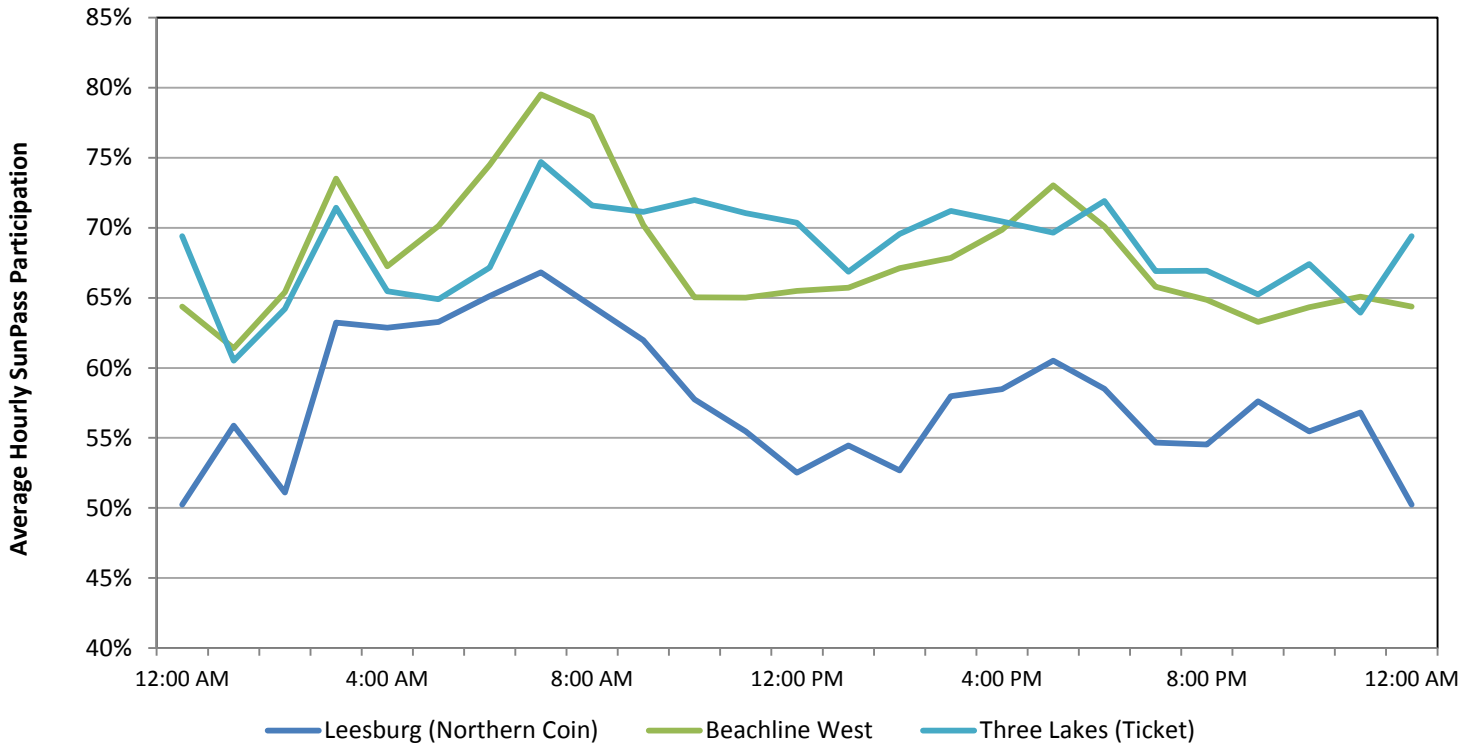


Source: Data obtained from Turnpike Enterprise Finance Office for the week beginning Monday, June 24, 2013.

Hourly variation indicates the fluctuations in SunPass participation during a full day (24-hour period). This graph shows the hourly SunPass participation on weekdays for a typical week at select mainline toll plazas on the southern components of the Mainline System. These components include the HEFT, Southern Coin System, and the southern portion of the Ticket System (Lantana).

As depicted in the graph, SunPass participation on these facilities increased during the early morning and evening hours. Peak-hour participation at the Okeechobee and Lantana toll plazas reached 90 and 88 percent, respectively, in the morning. Similarly, SunPass participation at the Cypress Creek and Golden Glades toll plazas reached 86 percent and 85 percent, respectively, during the morning peak hours. In general, the morning peak participation at all four toll plazas was higher than the evening peak participation.

Mainline Toll Plazas – Northern Facilities Typical Weekday Hourly SunPass Participation



Source: Data obtained from Turnpike Enterprise Finance Office for the week beginning Monday, June 24, 2013.

This graph shows the hourly SunPass participation on weekdays for a typical week at select mainline toll plazas on the northern components of the Mainline System. These components include the Northern Coin System, the northern portion of the Ticket System, and the Beachline West Expressway.

As depicted in the graph, SunPass participation at the Beachline West Expressway and the Northern Coin System peaked at 80 and 67 percent, respectively, during the morning peak hours. While the Leesburg toll plaza showed a significant rise in SunPass participation during the morning peak hours, it dropped in the late morning hours with some increase in the afternoon. In contrast, SunPass participation remained relatively stable throughout the day at the Three Lakes toll plaza. This pattern confirms the fact that long distance travelers and tourists are the primary users of that toll plaza.