

**Florida's Turnpike System**  
**SunPass Participation (Percent of Transactions)**

Turnpike Facility	SunPass Participation			June 2015 SunPass Participation
	FY 2015	FY 2014	Change	
SR 821 (HEFT)	85.9%	87.9%	<b>-2.0%</b>	85.3%
Southern Coin System	81.6	81.2	0.4	81.6
Ticket System	81.9	81.1	0.8	82.2
Northern Coin System	72.2	71.1	1.1	72.2
Beachline West Expressway	72.2	70.7	1.5	73.2
<b>Total Mainline</b>	<b>81.4%</b>	<b>81.7%</b>	<b>-0.3%</b>	<b>81.1%</b>
Sawgrass Expressway	88.2	87.0	1.2	88.1
Seminole Expressway	81.4	81.0	0.4	81.9
Veterans Expressway	84.4	79.2	5.2	83.6
Southern Connector Extension	77.5	76.6	0.9	77.7
Polk Parkway	74.8	72.2	2.6	75.5
Suncoast Parkway	81.2	79.1	2.1	80.6
Western Beltway, Part C	71.4	70.7	0.7	68.5
I-4 Connector <sup>(1)</sup>	76.2	77.2	-1.0	75.6
Beachline East Expressway <sup>(2)</sup>	63.9	-	-	64.7
<b>Total Expansion Projects</b>	<b>81.4%</b>	<b>80.7%</b>	<b>0.7%</b>	<b>81.1%</b>
<b>Total System</b>	<b>81.4%</b>	<b>81.4%</b>	<b>0.0%</b>	<b>81.1%</b>

Source: Turnpike Enterprise Finance Office.

<sup>(1)</sup> I-4 Connector opened to traffic in January 2014.

<sup>(2)</sup> Beachline East Expressway was acquired by the Turnpike on July 1, 2014.

**SunPass Transactions and Participation  
FY 2015**

Turnpike Facility	Annual Transactions			Participation
	SunPass	Non-SunPass	Total	
SR 821 (HEFT)	164,675,771	26,997,541	191,673,312	85.9%
Southern Coin System	121,415,974	27,302,653	148,718,627	81.6
Ticket System	42,016,013	9,311,173	51,327,186	81.9
Northern Coin System	52,463,567	20,181,254	72,644,821	72.2
Beachline West Expressway	20,749,552	7,999,963	28,749,515	72.2
Sawgrass Expressway	70,367,180	9,378,275	79,745,455	88.2
Seminole Expressway	28,811,127	6,562,149	35,373,276	81.4
Veterans Expressway	43,386,070	8,026,241	51,412,311	84.4
Southern Connector Extension	8,567,066	2,492,349	11,059,415	77.5
Polk Parkway	22,520,335	7,582,183	30,102,518	74.8
Suncoast Parkway	23,710,410	5,506,945	29,217,355	81.2
Western Beltway, Part C	6,205,450	2,482,989	8,688,439	71.4
I-4 Connector <sup>(1)</sup>	9,213,194	2,880,870	12,094,064	76.2
Beachline East Expressway <sup>(2)</sup>	10,916,519	6,162,665	17,079,184	63.9
<b>Total</b>	<b>625,018,228</b>	<b>142,867,250</b>	<b>767,885,478</b>	<b>81.4%</b>

Source: Turnpike Enterprise Finance Office.

<sup>(1)</sup> I-4 Connector opened to traffic in January 2014.

<sup>(2)</sup> Beachline East Expressway was acquired by the Turnpike on July 1, 2014.

**Florida's Turnpike System**  
**Quarterly SunPass Toll Revenue (\$000)**  
**FY 2015 vs. FY 2014**

Months	FY 2015	FY 2014	Variance	
			Amount	Change
July	\$54,915,528	\$49,730,077	\$5,185,451	10.4%
August	55,619,515	52,058,070	3,561,445	6.8
September	52,994,236	47,809,469	5,184,767	10.8
1st Quarter Subtotal	163,529,279	149,597,616	13,931,663	9.3
October	58,536,730	52,988,480	5,548,250	10.5
November	55,315,414	50,746,305	4,569,109	9.0
December	58,827,053	52,327,544	6,499,509	12.4
2nd Quarter Subtotal	172,679,197	156,062,329	16,616,868	10.6
January	58,035,473	51,807,251	6,228,222	12.0
February	55,441,357	49,206,652	6,234,705	12.7
March	63,938,357	56,020,440	7,917,917	14.1
3rd Quarter Subtotal	177,415,187	157,034,343	20,380,844	13.0
April	61,126,324	53,945,728	7,180,596	13.3
May	61,871,039	55,385,652	6,485,387	11.7
June	59,816,290	52,038,889	7,777,401	14.9
4th Quarter Subtotal	182,813,653	161,370,269	21,443,384	13.3
<b>Annual Total</b>	<b>\$696,437,316</b>	<b>\$624,064,557</b>	<b>\$72,372,759</b>	<b>11.6%</b>

Source: Turnpike Enterprise Finance Office.

**SR 821 (HEFT)**  
**SunPass Transactions and Participation**  
**FY 2015**

Month	Number of Transactions			SunPass Participation
	SunPass	Non-SunPass	Total	
July, 2014	13,064,440	2,073,225	15,137,665	86.3%
August	13,464,193	2,131,634	15,595,827	86.3
September	13,254,161	2,059,213	15,313,374	86.6
October	14,076,225	2,215,759	16,291,984	86.4
November	13,088,178	2,129,360	15,217,538	86.0
December	13,684,436	2,306,032	15,990,468	85.6
January, 2015	13,754,270	2,255,348	16,009,618	85.9
February	13,114,137	2,143,192	15,257,329	86.0
March	14,714,247	2,471,192	17,185,439	85.6
April	14,341,586	2,387,582	16,729,168	85.7
May	14,269,949	2,435,946	16,705,895	85.4
June	13,849,949	2,389,058	16,239,007	85.3
<b>Total</b>	<b>164,675,771</b>	<b>26,997,541</b>	<b>191,673,312</b>	<b>85.9%</b>

Source: Turnpike Enterprise Finance Office.

**SR 821 (HEFT)**  
**Quarterly SunPass Revenue Results**  
**FY 2015 vs. FY 2014**

Months	FY 2015	FY 2014	Variance	
			Amount	Change
July	\$11,936,988	\$11,464,804	\$472,184	4.1%
August	12,291,646	11,983,364	308,282	2.6
September	11,954,404	11,349,345	605,059	5.3
1st Quarter Subtotal	36,183,038	34,797,513	1,385,525	4.0
October	12,726,139	12,245,242	480,897	3.9
November	11,858,118	11,592,546	265,572	2.3
December	12,363,424	11,657,638	705,786	6.1
2nd Quarter Subtotal	36,947,681	35,495,426	1,452,255	4.1
January	12,458,380	11,747,975	710,405	6.0
February	11,858,772	11,229,753	629,019	5.6
March	13,368,981	12,382,990	985,991	8.0
3rd Quarter Subtotal	37,686,133	35,360,718	2,325,415	6.6
April	13,024,306	12,010,446	1,013,860	8.4
May	12,921,698	12,091,261	830,437	6.9
June	12,585,808	11,464,324	1,121,484	9.8
4th Quarter Subtotal	38,531,812	35,566,031	2,965,781	8.3
<b>Annual Total</b>	<b>\$149,348,664</b>	<b>\$141,219,688</b>	<b>\$8,128,976</b>	<b>5.8%</b>

Source: Turnpike Enterprise Finance Office.

**Southern Coin System  
SunPass Transactions and Participation  
FY 2015**

Month	Number of Transactions			SunPass Participation
	SunPass	Non-SunPass	Total	
July, 2014	9,366,961	2,111,592	11,478,553	81.6%
August	9,532,895	2,101,199	11,634,094	81.9
September	9,268,512	1,964,232	11,232,744	82.5
October	10,169,803	2,183,921	12,353,724	82.3
November	9,562,555	2,143,731	11,706,286	81.7
December	10,290,828	2,446,937	12,737,765	80.8
January, 2015	10,363,904	2,353,818	12,717,722	81.5
February	9,935,409	2,248,711	12,184,120	81.5
March	11,170,706	2,586,592	13,757,298	81.2
April	10,739,101	2,403,025	13,142,126	81.7
May	10,664,587	2,429,958	13,094,545	81.4
June	10,350,713	2,328,937	12,679,650	81.6
<b>Total</b>	<b>121,415,974</b>	<b>27,302,653</b>	<b>148,718,627</b>	<b>81.6%</b>

Source: Turnpike Enterprise Finance Office.

**Southern Coin System**  
**Quarterly SunPass Revenue Results**  
**FY 2015 vs. FY 2014**

Months	FY 2015	FY 2014	Variance	
			Amount	Change
July	\$8,519,754	\$7,756,314	\$763,440	9.8%
August	8,552,270	8,142,614	409,656	5.0
September	8,216,300	7,568,490	647,810	8.6
1st Quarter Subtotal	25,288,324	23,467,418	1,820,906	7.8
October	9,182,181	8,370,026	812,155	9.7
November	8,688,665	7,939,011	749,654	9.4
December	9,371,619	8,164,432	1,207,187	14.8
2nd Quarter Subtotal	27,242,465	24,473,469	2,768,996	11.3
January	9,403,082	8,293,268	1,109,814	13.4
February	9,007,587	8,087,007	920,580	11.4
March	10,183,041	8,972,281	1,210,760	13.5
3rd Quarter Subtotal	28,593,710	25,352,556	3,241,154	12.8
April	9,796,123	8,733,443	1,062,680	12.2
May	9,706,046	8,779,355	926,691	10.6
June	9,476,044	8,191,059	1,284,985	15.7
4th Quarter Subtotal	28,978,213	25,703,857	3,274,356	12.7
Lantana Adjustment *	17,535,405	15,941,581	1,593,824	10.0
<b>Annual Total</b>	<b>\$127,638,117</b>	<b>\$114,938,881</b>	<b>\$12,699,236</b>	<b>11.0%</b>

Source: Turnpike Enterprise Finance Office.

\* Amount based on actual two-way revenue traffic at the plaza multiplied by an average adjustment rate.

**Ticket System**  
**SunPass Transactions and Participation**  
**FY 2015**

Month	Number of Transactions			SunPass Participation
	SunPass	Non-SunPass	Total	
July, 2014	3,295,623	771,016	4,066,639	81.0%
August	3,345,417	747,481	4,092,898	81.7
September	3,182,855	626,586	3,809,441	83.6
October	3,520,603	703,530	4,224,133	83.3
November	3,365,485	735,421	4,100,906	82.1
December	3,590,220	844,971	4,435,191	80.9
January, 2015	3,572,505	808,954	4,381,459	81.5
February	3,391,801	775,811	4,167,612	81.4
March	3,880,866	932,296	4,813,162	80.6
April	3,648,453	814,595	4,463,048	81.7
May	3,699,171	785,659	4,484,830	82.5
June	3,523,014	764,853	4,287,867	82.2
<b>Total</b>	<b>42,016,013</b>	<b>9,311,173</b>	<b>51,327,186</b>	<b>81.9%</b>

Source: Turnpike Enterprise Finance Office.



**Ticket System**  
**Quarterly SunPass Revenue Results**  
**FY 2015 vs. FY 2014**

Months	FY 2015	FY 2014	Variance	
			Amount	Change
July	\$11,455,059	\$10,431,068	\$1,023,991	9.8%
August	11,622,768	10,939,546	683,222	6.2
September	10,333,792	9,378,852	954,940	10.2
1st Quarter Subtotal	33,411,619	30,749,466	2,662,153	8.7
October	11,872,482	10,806,199	1,066,283	9.9
November	11,858,141	10,858,910	999,231	9.2
December	12,459,645	11,517,595	942,050	8.2
2nd Quarter Subtotal	36,190,268	33,182,704	3,007,564	9.1
January	11,835,440	10,740,314	1,095,126	10.2
February	11,054,316	9,916,885	1,137,431	11.5
March	13,322,122	12,012,627	1,309,495	10.9
3rd Quarter Subtotal	36,211,878	32,669,826	3,542,052	10.8
April	12,066,988	10,868,506	1,198,482	11.0
May	12,822,431	11,741,111	1,081,320	9.2
June	12,095,435	10,748,332	1,347,103	12.5
4th Quarter Subtotal	36,984,854	33,357,949	3,626,905	10.9
Lantana Adjustment*	(17,535,405)	(15,941,581)	(1,593,824)	10.0
Three Lakes Adjustment**	(9,983,394)	(9,035,753)	(947,641)	10.5
Total Adjustments	(27,518,799)	(24,977,334)	(2,541,465)	10.2
<b>Annual Total</b>	<b>\$115,279,820</b>	<b>\$104,982,611</b>	<b>\$10,297,209</b>	<b>9.8%</b>

Source: Turnpike Enterprise Finance Office.

\* Allocated to Southern Coin System, amount based on actual two-way revenue traffic at the plaza multiplied by an average adjustment rate.

\*\* Allocated to Northern Coin System, amount based on actual two-way revenue traffic at the plaza multiplied by an average adjustment rate.

**Northern Coin System  
SunPass Transactions and Participation  
FY 2015**

Month	Number of Transactions			SunPass Participation
	SunPass	Non-SunPass	Total	
July, 2014	4,140,838	1,777,424	5,918,262	70.0%
August	4,160,966	1,588,104	5,749,070	72.4
September	3,979,729	1,374,016	5,353,745	74.3
October	4,385,472	1,600,935	5,986,407	73.3
November	4,096,048	1,590,578	5,686,626	72.0
December	4,400,811	1,796,402	6,197,213	71.0
January, 2015	4,315,133	1,639,286	5,954,419	72.5
February	4,142,693	1,581,568	5,724,261	72.4
March	4,821,553	1,972,748	6,794,301	71.0
April	4,649,258	1,741,963	6,391,221	72.7
May	4,733,819	1,728,555	6,462,374	73.3
June	4,637,247	1,789,675	6,426,922	72.2
<b>Total</b>	<b>52,463,567</b>	<b>20,181,254</b>	<b>72,644,821</b>	<b>72.2%</b>

Source: Turnpike Enterprise Finance Office.

**Northern Coin System**  
**Quarterly SunPass Revenue Results**  
**FY 2015 vs. FY 2014**

Months	FY 2015	FY 2014	Variance	
			Amount	Change
July	\$5,851,167	\$5,295,126	\$556,041	10.5%
August	5,735,375	5,499,335	236,040	4.3
September	5,533,074	5,014,811	518,263	10.3
1st Quarter Subtotal	17,119,616	15,809,272	1,310,344	8.3
October	6,160,249	5,597,732	562,517	10.0
November	5,840,844	5,434,191	406,653	7.5
December	6,150,298	5,553,019	597,279	10.8
2nd Quarter Subtotal	18,151,391	16,584,942	1,566,449	9.4
January	5,986,017	5,346,974	639,043	12.0
February	5,746,472	5,042,521	703,951	14.0
March	6,804,687	5,813,638	991,049	17.0
3rd Quarter Subtotal	18,537,176	16,203,133	2,334,043	14.4
April	6,534,256	5,662,538	871,718	15.4
May	6,664,878	5,849,079	815,799	13.9
June	6,534,966	5,573,747	961,219	17.2
4th Quarter Subtotal	19,734,100	17,085,364	2,648,736	15.5
Three Lakes Adjustment *	9,983,394	9,035,753	947,641	10.5
<b>Annual Total</b>	<b>\$83,525,677</b>	<b>\$74,718,464</b>	<b>\$8,807,213</b>	<b>11.8%</b>

Source: Turnpike Enterprise Finance Office.

\* Amount based on actual two-way revenue traffic at the plaza multiplied by an average adjustment rate.

**Beachline West Expressway  
SunPass Transactions and Participation  
FY 2015**

Month	Number of Transactions			SunPass Participation
	SunPass	Non-SunPass	Total	
July, 2014	1,617,582	694,574	2,312,156	70.0%
August	1,601,987	652,682	2,254,669	71.1
September	1,556,340	546,146	2,102,486	74.0
October	1,753,955	646,216	2,400,171	73.1
November	1,608,566	615,928	2,224,494	72.3
December	1,701,171	704,164	2,405,335	70.7
January, 2015	1,733,731	674,580	2,408,311	72.0
February	1,674,870	643,730	2,318,600	72.2
March	1,952,024	785,329	2,737,353	71.3
April	1,840,362	694,638	2,535,000	72.6
May	1,879,078	673,539	2,552,617	73.6
June	1,829,886	668,437	2,498,323	73.2
<b>Total</b>	<b>20,749,552</b>	<b>7,999,963</b>	<b>28,749,515</b>	<b>72.2%</b>

Source: Turnpike Enterprise Finance Office.

**Beachline West Expressway**  
**Quarterly SunPass Revenue Results**  
**FY 2015 vs. FY 2014**

Months	FY 2015	FY 2014	Variance	
			Amount	Change
July	\$1,343,189	\$1,228,207	\$114,982	9.4%
August	1,329,766	1,248,108	81,658	6.5
September	1,293,600	1,159,345	134,255	11.6
1st Quarter Subtotal	3,966,555	3,635,660	330,895	9.1
October	1,465,312	1,320,105	145,207	11.0
November	1,340,124	1,214,496	125,628	10.3
December	1,425,432	1,258,325	167,107	13.3
2nd Quarter Subtotal	4,230,868	3,792,926	437,942	11.5
January	1,446,379	1,290,179	156,200	12.1
February	1,397,174	1,252,660	144,514	11.5
March	1,626,375	1,416,637	209,738	14.8
3rd Quarter Subtotal	4,469,928	3,959,476	510,452	12.9
April	1,543,436	1,340,163	203,273	15.2
May	1,569,026	1,392,322	176,704	12.7
June	1,531,188	1,333,812	197,376	14.8
4th Quarter Subtotal	4,643,650	4,066,297	577,353	14.2
<b>Annual Total</b>	<b>\$17,311,001</b>	<b>\$15,454,359</b>	<b>\$1,856,642</b>	<b>12.0%</b>

Source: Turnpike Enterprise Finance Office.

**Sawgrass Expressway  
SunPass Transactions and Participation  
FY 2015**

Month	Number of Transactions			SunPass Participation
	SunPass	Non-SunPass	Total	
July, 2014	5,517,998	691,071	6,209,069	88.9%
August	5,682,593	729,248	6,411,841	88.6
September	5,518,599	701,241	6,219,840	88.7
October	5,949,886	764,600	6,714,486	88.6
November	5,566,271	746,910	6,313,181	88.2
December	6,001,482	841,332	6,842,814	87.7
January, 2015	5,934,023	801,046	6,735,069	88.1
February	5,715,671	777,809	6,493,480	88.0
March	6,297,225	872,241	7,169,466	87.8
April	6,109,803	830,563	6,940,366	88.0
May	6,172,337	824,682	6,997,019	88.2
June	5,901,292	797,532	6,698,824	88.1
<b>Total</b>	<b>70,367,180</b>	<b>9,378,275</b>	<b>79,745,455</b>	<b>88.2%</b>

Source: Turnpike Enterprise Finance Office.

**Sawgrass Expressway**  
**Quarterly SunPass Revenue Results**  
**FY 2015 vs. FY 2014**

Months	FY 2015	FY 2014	Variance	
			Amount	Change
July	5,340,665	\$4,835,748	\$504,917	10.4%
August	5,477,751	5,100,099	377,652	7.4
September	5,304,227	4,823,099	481,128	10.0
1st Quarter Subtotal	16,122,643	14,758,946	1,363,697	9.2
October	5,734,672	5,301,224	433,448	8.2
November	5,345,248	5,019,359	325,889	6.5
December	5,764,340	5,159,238	605,102	11.7
2nd Quarter Subtotal	16,844,260	15,479,821	1,364,439	8.8
January	5,712,069	5,229,663	482,406	9.2
February	5,495,718	4,794,491	701,227	14.6
March	6,086,231	5,371,983	714,248	13.3
3rd Quarter Subtotal	17,294,018	15,396,137	1,897,881	12.3
April	5,887,716	5,364,173	523,543	9.8
May	5,924,077	5,515,937	408,140	7.4
June	5,675,195	5,149,596	525,599	10.2
4th Quarter Subtotal	17,486,988	16,029,706	1,457,282	9.1
<b>Annual Total</b>	<b>\$67,747,909</b>	<b>\$61,664,610</b>	<b>\$6,083,299</b>	<b>9.9%</b>

Source: Turnpike Enterprise Finance Office.

**Seminole Expressway  
SunPass Transactions and Participation  
FY 2015**

Month	Number of Transactions			SunPass Participation
	SunPass	Non-SunPass	Total	
July, 2014	2,238,467	532,112	2,770,579	80.8%
August	2,266,358	549,372	2,815,730	80.5
September	2,238,900	482,173	2,721,073	82.3
October	2,462,518	540,226	3,002,744	82.0
November	2,219,478	507,683	2,727,161	81.4
December	2,374,716	574,930	2,949,646	80.5
January, 2015	2,371,882	530,842	2,902,724	81.7
February	2,312,663	525,316	2,837,979	81.5
March	2,617,666	617,680	3,235,346	80.9
April	2,589,632	566,678	3,156,310	82.0
May	2,595,018	576,950	3,171,968	81.8
June	2,523,829	558,187	3,082,016	81.9
<b>Total</b>	<b>28,811,127</b>	<b>6,562,149</b>	<b>35,373,276</b>	<b>81.4%</b>

Source: Turnpike Enterprise Finance Office.



**Seminole Expressway  
Quarterly SunPass Revenue Results  
FY 2015 vs. FY 2014**

Months	FY 2015	FY 2014	Variance	
			Amount	Change
July	\$2,841,041	\$2,562,621	\$278,420	10.9%
August	2,877,545	2,710,310	167,235	6.2
September	2,824,963	2,553,942	271,021	10.6
1st Quarter Subtotal	8,543,549	7,826,873	716,676	9.2
October	3,106,561	2,812,787	293,774	10.4
November	2,782,827	2,585,035	197,792	7.7
December	2,957,184	2,635,708	321,476	12.2
2nd Quarter Subtotal	8,846,572	8,033,530	813,042	10.1
January	2,996,130	2,693,527	302,603	11.2
February	2,946,511	2,586,837	359,674	13.9
March	3,362,278	2,894,407	467,871	16.2
3rd Quarter Subtotal	9,304,919	8,174,771	1,130,148	13.8
April	3,314,407	2,868,581	445,826	15.5
May	3,301,929	2,878,296	423,633	14.7
June	3,242,825	2,707,442	535,383	19.8
4th Quarter Subtotal	9,859,161	8,454,319	1,404,842	16.6
<b>Annual Total</b>	<b>\$36,554,201</b>	<b>\$32,489,493</b>	<b>\$4,064,708</b>	<b>12.5%</b>

Source: Turnpike Enterprise Finance Office.

**Veterans Expressway  
SunPass Transactions and Participation  
FY 2015**

Month	Number of Transactions			SunPass Participation
	SunPass	Non-SunPass	Total	
July, 2014	3,404,015	628,558	4,032,573	84.4%
August	3,459,274	641,419	4,100,693	84.4
September	3,387,927	560,626	3,948,553	85.8
October	3,718,985	637,009	4,355,994	85.4
November	3,372,098	608,998	3,981,096	84.7
December	3,738,219	690,953	4,429,172	84.4
January, 2015	3,612,112	657,204	4,269,316	84.6
February	3,443,975	636,796	4,080,771	84.4
March	3,868,950	753,447	4,622,397	83.7
April	3,818,811	727,402	4,546,213	84.0
May	3,846,899	753,157	4,600,056	83.6
June	3,714,805	730,672	4,445,477	83.6
<b>Total</b>	<b>43,386,070</b>	<b>8,026,241</b>	<b>51,412,311</b>	<b>84.4%</b>

Source: Turnpike Enterprise Finance Office.

**Veterans Expressway  
Quarterly SunPass Revenue Results  
FY 2015 vs. FY 2014**

Months	FY 2015	FY 2014	Variance	
			Amount	Change
July	\$2,857,299	\$2,600,059	\$257,240	9.9%
August	2,904,636	2,703,117	201,519	7.5
September	2,834,566	2,524,059	310,507	12.3
1st Quarter Subtotal	8,596,501	7,827,235	769,266	9.8
October	3,083,953	2,737,284	346,669	12.7
November	2,790,553	2,535,778	254,775	10.0
December	3,081,322	2,658,405	422,917	15.9
2nd Quarter Subtotal	8,955,828	7,931,467	1,024,361	12.9
January	2,986,102	2,575,618	410,484	15.9
February	2,852,707	2,428,022	424,685	17.5
March	3,226,427	2,717,253	509,174	18.7
3rd Quarter Subtotal	9,065,236	7,720,893	1,344,343	17.4
April	3,184,863	2,686,511	498,352	18.6
May	3,206,050	2,708,281	497,769	18.4
June	3,112,852	2,620,654	492,198	18.8
4th Quarter Subtotal	9,503,765	8,015,446	1,488,319	18.6
<b>Annual Total</b>	<b>\$36,121,330</b>	<b>\$31,495,041</b>	<b>\$4,626,289</b>	<b>14.7%</b>

Source: Turnpike Enterprise Finance Office.

**Southern Connector Extension  
SunPass Transactions and Participation  
FY 2015**

Month	Number of Transactions			SunPass Participation
	SunPass	Non-SunPass	Total	
July, 2014	673,496	211,181	884,677	76.1%
August	656,365	192,757	849,122	77.3
September	592,325	145,940	738,265	80.2
October	665,558	181,123	846,681	78.6
November	626,339	174,712	801,051	78.2
December	730,760	232,421	963,181	75.9
January, 2015	702,953	203,461	906,414	77.6
February	701,736	212,102	913,838	76.8
March	840,391	269,612	1,110,003	75.7
April	802,581	236,918	1,039,499	77.2
May	795,228	208,049	1,003,277	79.3
June	779,334	224,073	1,003,407	77.7
<b>Total</b>	<b>8,567,066</b>	<b>2,492,349</b>	<b>11,059,415</b>	<b>77.5%</b>

Source: Turnpike Enterprise Finance Office.

**Southern Connector Extension**  
**Quarterly SunPass Revenue Results**  
**FY 2015 vs. FY 2014**

Months	FY 2015	FY 2014	Variance	
			Amount	Change
July	\$530,509	\$457,784	\$72,725	15.9%
August	517,334	465,525	51,809	11.1
September	469,174	410,011	59,163	14.4
1st Quarter Subtotal	1,517,017	1,333,320	183,697	13.8
October	521,876	452,399	69,477	15.4
November	490,037	436,131	53,906	12.4
December	562,264	481,462	80,802	16.8
2nd Quarter Subtotal	1,574,177	1,369,992	204,185	14.9
January	547,625	470,353	77,272	16.4
February	547,368	447,202	100,166	22.4
March	652,782	545,946	106,836	19.6
3rd Quarter Subtotal	1,747,775	1,463,501	284,274	19.4
April	628,356	496,377	131,979	26.6
May	618,110	493,893	124,217	25.2
June	610,497	484,147	126,350	26.1
4th Quarter Subtotal	1,856,963	1,474,417	382,546	25.9
<b>Annual Total</b>	<b>\$6,695,932</b>	<b>\$5,641,230</b>	<b>\$1,054,702</b>	<b>18.7%</b>

Source: Turnpike Enterprise Finance Office.

**Polk Parkway  
SunPass Transactions and Participation  
FY 2015**

Month	Number of Transactions			SunPass Participation
	SunPass	Non-SunPass	Total	
July, 2014	1,681,959	601,236	2,283,195	73.7%
August	1,753,166	594,600	2,347,766	74.7
September	1,740,878	548,108	2,288,986	76.1
October	1,911,687	618,851	2,530,538	75.5
November	1,737,523	586,893	2,324,416	74.8
December	1,894,264	653,077	2,547,341	74.4
January, 2015	1,888,989	620,823	2,509,812	75.3
February	1,835,885	641,491	2,477,376	74.1
March	2,091,161	742,648	2,833,809	73.8
April	2,023,711	678,422	2,702,133	74.9
May	2,013,946	663,006	2,676,952	75.2
June	1,947,166	633,028	2,580,194	75.5
<b>Total</b>	<b>22,520,335</b>	<b>7,582,183</b>	<b>30,102,518</b>	<b>74.8%</b>

Source: Turnpike Enterprise Finance Office.

**Polk Parkway**  
**Quarterly SunPass Revenue Results**  
**FY 2015 vs. FY 2014**

Months	FY 2015	FY 2014	Variance	
			Amount	Change
July	\$1,511,519	\$1,313,430	\$198,089	15.1%
August	1,572,416	1,418,381	154,035	10.9
September	1,555,439	1,336,055	219,384	16.4
1st Quarter Subtotal	4,639,374	4,067,866	571,508	14.0
October	1,728,239	1,489,438	238,801	16.0
November	1,563,509	1,363,063	200,446	14.7
December	1,707,548	1,392,598	314,950	22.6
2nd Quarter Subtotal	4,999,296	4,245,099	754,197	17.8
January	1,680,808	1,425,304	255,504	17.9
February	1,659,446	1,372,714	286,732	20.9
March	1,888,296	1,524,653	363,643	23.9
3rd Quarter Subtotal	5,228,550	4,322,671	905,879	21.0
April	1,829,569	1,553,095	276,474	17.8
May	1,819,378	1,553,438	265,940	17.1
June	1,773,993	1,460,329	313,664	21.5
4th Quarter Subtotal	5,422,940	4,566,862	856,078	18.7
<b>Annual Total</b>	<b>\$20,290,160</b>	<b>\$17,202,498</b>	<b>\$3,087,662</b>	<b>17.9%</b>

Source: Turnpike Enterprise Finance Office.

**Suncoast Parkway  
SunPass Transactions and Participation  
FY 2015**

Month	Number of Transactions			SunPass Participation
	SunPass	Non-SunPass	Total	
July, 2014	1,846,227	426,088	2,272,315	81.2%
August	1,880,208	420,271	2,300,479	81.7
September	1,860,999	385,668	2,246,667	82.8
October	2,030,143	430,897	2,461,040	82.5
November	1,889,690	436,438	2,326,128	81.2
December	2,022,171	486,003	2,508,174	80.6
January, 2015	1,985,827	459,153	2,444,980	81.2
February	1,868,227	454,396	2,322,623	80.4
March	2,167,152	542,547	2,709,699	80.0
April	2,103,398	494,906	2,598,304	81.0
May	2,084,123	495,802	2,579,925	80.8
June	1,972,245	474,776	2,447,021	80.6
<b>Total</b>	<b>23,710,410</b>	<b>5,506,945</b>	<b>29,217,355</b>	<b>81.2%</b>

Source: Turnpike Enterprise Finance Office.



**Suncoast Parkway**  
**Quarterly SunPass Revenue Results**  
**FY 2015 vs. FY 2014**

Months	FY 2015	FY 2014	Variance	
			Amount	Change
July	\$1,513,867	\$1,368,728	\$145,139	10.6%
August	1,520,755	1,423,554	97,201	6.8
September	1,494,132	1,308,202	185,930	14.2
1st Quarter Subtotal	4,528,754	4,100,484	428,270	10.4
October	1,628,399	1,429,184	199,215	13.9
November	1,530,958	1,370,286	160,672	11.7
December	1,620,996	1,416,180	204,816	14.5
2nd Quarter Subtotal	4,780,353	4,215,650	564,703	13.4
January	1,597,503	1,368,034	229,469	16.8
February	1,500,304	1,305,390	194,914	14.9
March	1,772,605	1,492,246	280,359	18.8
3rd Quarter Subtotal	4,870,412	4,165,670	704,742	16.9
April	1,723,654	1,478,262	245,392	16.6
May	1,698,128	1,474,925	223,203	15.1
June	1,605,407	1,425,532	179,875	12.6
4th Quarter Subtotal	5,027,189	4,378,719	648,470	14.8
<b>Annual Total</b>	<b>\$19,206,708</b>	<b>\$16,860,523</b>	<b>\$2,346,185</b>	<b>13.9%</b>

Source: Turnpike Enterprise Finance Office.

**Western Beltway, Part C**  
**SunPass Transactions and Participation**  
**FY 2015**

Month	Number of Transactions			SunPass Participation
	SunPass	Non-SunPass	Total	
July, 2014	473,833	224,275	698,108	67.9%
August	465,096	189,704	654,800	71.0
September	428,946	136,428	565,374	75.9
October	481,558	175,823	657,381	73.3
November	450,675	169,806	620,481	72.6
December	512,329	211,373	723,702	70.8
January, 2015	515,891	191,825	707,716	72.9
February	512,591	202,272	714,863	71.7
March	617,628	267,224	884,852	69.8
April	595,074	239,768	834,842	71.3
May	583,381	212,826	796,207	73.3
June	568,448	261,665	830,113	68.5
<b>Total</b>	<b>6,205,450</b>	<b>2,482,989</b>	<b>8,688,439</b>	<b>71.4%</b>

Source: Turnpike Enterprise Finance Office.

**Western Beltway, Part C**  
**Quarterly SunPass Revenue Results**  
**FY 2015 vs. FY 2014**

Months	FY 2015	FY 2014	Variance	
			Amount	Change
July	\$492,555	\$416,189	\$76,366	18.3%
August	482,628	424,116	58,512	13.8
September	451,971	383,258	68,713	17.9
1st Quarter Subtotal	1,427,154	1,223,563	203,591	16.6
October	508,794	426,860	81,934	19.2
November	469,553	397,499	72,054	18.1
December	529,652	432,945	96,707	22.3
2nd Quarter Subtotal	1,507,999	1,257,304	250,695	19.9
January	533,285	433,803	99,482	22.9
February	532,130	417,631	114,499	27.4
March	639,907	484,978	154,929	31.9
3rd Quarter Subtotal	1,705,322	1,336,412	368,910	27.6
April	622,343	470,315	152,028	32.3
May	606,877	470,277	136,600	29.0
June	592,805	450,820	141,985	31.5
4th Quarter Subtotal	1,822,025	1,391,412	430,613	30.9
<b>Annual Total</b>	<b>\$6,462,500</b>	<b>\$5,208,691</b>	<b>\$1,253,809</b>	<b>24.1%</b>

Source: Turnpike Enterprise Finance Office.

**I-4 Connector  
SunPass Transactions and Participation  
FY 2015**

Month	Number of Transactions			SunPass Participation
	SunPass	Non-SunPass	Total	
July, 2014	595,802	171,832	767,634	77.6%
August	622,117	181,692	803,809	77.4
September	651,660	194,145	845,805	77.0
October	729,149	221,367	950,516	76.7
November	679,548	209,665	889,213	76.4
December	750,328	243,114	993,442	75.5
January, 2015	781,620	245,367	1,026,987	76.1
February	775,035	248,764	1,023,799	75.7
March	902,152	293,286	1,195,438	75.5
April	889,882	280,434	1,170,316	76.0
May	926,464	298,241	1,224,705	75.6
June	909,437	292,963	1,202,400	75.6
<b>Total</b>	<b>9,213,194</b>	<b>2,880,870</b>	<b>12,094,064</b>	<b>76.2%</b>

Source: Turnpike Enterprise Finance Office.

**I-4 Connector  
Quarterly SunPass Revenue Results  
FY 2015 vs. FY 2014**

Months	FY 2015	FY 2014	Variance	
			Amount	Change
July	\$463,740	N/A	NA	NA
August	481,005	N/A	NA	NA
September	500,994	N/A	NA	NA
1st Quarter Subtotal	1,445,739	N/A	NA	NA
October	565,918	N/A	NA	NA
November	520,328	N/A	NA	NA
December	573,888	N/A	NA	NA
2nd Quarter Subtotal	1,660,134	N/A	NA	NA
January	602,591	\$192,240	\$410,351	NA
February	602,940	325,539	277,401	185.2
March	706,288	390,801	315,487	180.7
3rd Quarter Subtotal	1,911,819	908,580	1,003,239	NA
April	691,446	413,318	278,128	167.3
May	720,173	437,477	282,696	164.6
June	704,763	429,093	275,670	164.2
4th Quarter Subtotal	2,116,382	1,279,888	836,494	165.4
<b>Annual Total</b>	<b>\$7,134,074</b>	<b>\$2,188,468</b>	<b>\$4,945,606</b>	<b>NA</b>

Source: Turnpike Enterprise Finance Office.

I-4 Connector opened to traffic on January 6, 2014.

Toll collection started on January 12, 2014.

**Beachline East Expressway  
SunPass Transactions and Participation  
FY 2015**

Month	Number of Transactions			SunPass Participation
	SunPass	Non-SunPass	Total	
July, 2014	905,778	556,403	1,462,181	61.9%
August	896,920	513,477	1,410,397	63.6
September	802,527	403,130	1,205,657	66.6
October	886,876	466,049	1,352,925	65.6
November	784,751	432,052	1,216,803	64.5
December	905,948	517,462	1,423,410	63.6
January, 2015	876,452	486,454	1,362,906	64.3
February	838,186	484,853	1,323,039	63.4
March	1,044,591	653,371	1,697,962	61.5
April	970,089	568,848	1,538,937	63.0
May	1,035,521	551,385	1,586,906	65.3
June	968,880	529,181	1,498,061	64.7
<b>Total</b>	<b>10,916,519</b>	<b>6,162,665</b>	<b>17,079,184</b>	<b>63.9%</b>

Source: Turnpike Enterprise Finance Office.

**Beachline East Expressway  
Quarterly SunPass Revenue Results  
FY 2015**

<b>Months</b>	<b>FY 2015</b>
July	\$258,176
August	253,622
September	227,599
1st Quarter Subtotal	739,397
October	251,954
November	236,509
December	259,441
2nd Quarter Subtotal	747,904
January	250,063
February	239,911
March	298,335
3rd Quarter Subtotal	788,309
April	278,861
May	292,239
June	274,513
4th Quarter Subtotal	845,613
<b>Annual Total</b>	<b>\$3,121,223</b>

Source: Turnpike Enterprise Finance Office.  
Beachline East Expressway was acquired by  
the Turnpike on July 1, 2014.

**Mainline Seasonal Variation  
SunPass Traffic  
FY 2015**

Month	Seasonal Factor				
	SR 821 (HEFT)	Southern Coin System	Ticket System	Northern Coin System	Beachline West Expressway
July, 2014	0.93	0.91	0.92	0.93	0.92
August	0.96	0.92	0.94	0.93	0.91
September	0.98	0.93	0.92	0.92	0.91
October	1.01	0.99	0.99	0.98	1.00
November	0.97	0.96	0.97	0.95	0.94
December	0.98	1.00	1.01	0.99	0.97
January, 2015	0.98	1.01	1.00	0.97	0.98
February	1.04	1.07	1.05	1.03	1.05
March	1.05	1.08	1.09	1.08	1.11
April	1.06	1.08	1.06	1.08	1.08
May	1.02	1.03	1.04	1.06	1.07
June	1.02	1.04	1.02	1.08	1.07

Source: Turnpike Enterprise Finance Office.

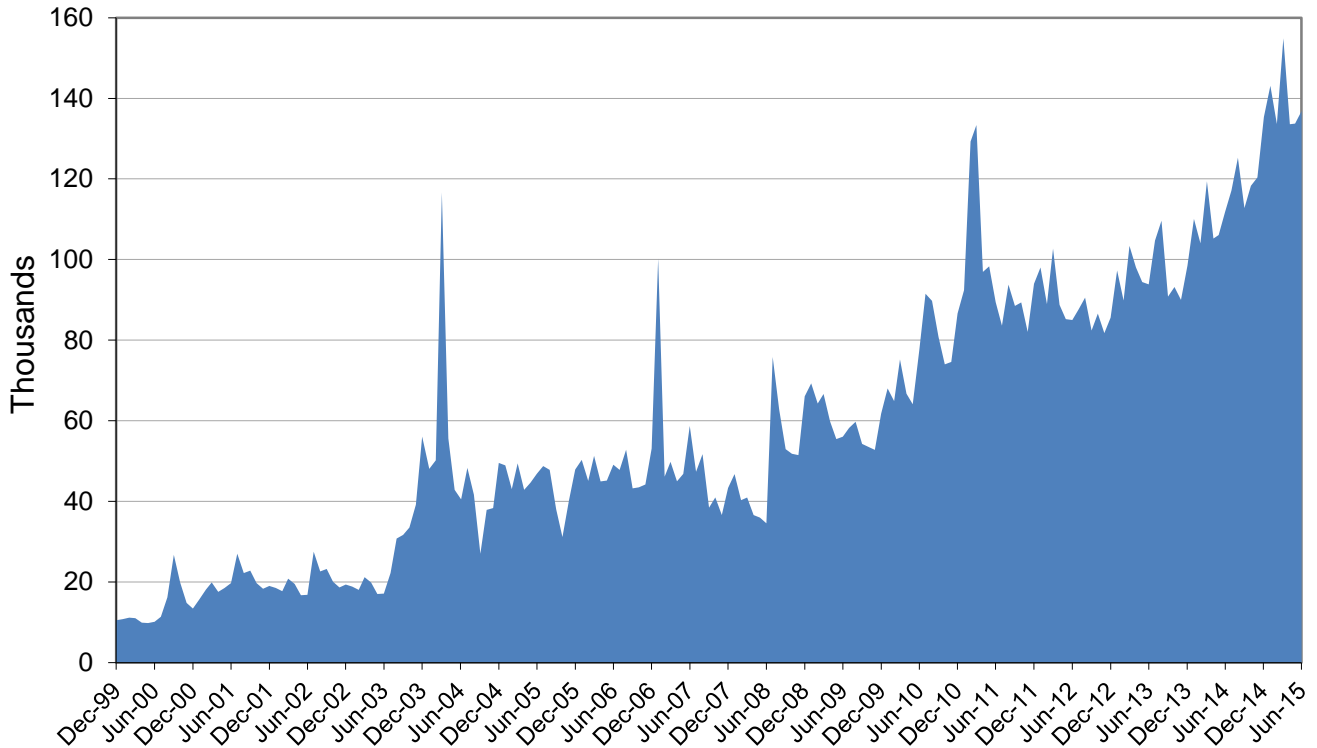


**Expansion Projects Seasonal Variation  
SunPass Traffic  
FY 2015**

Month	Seasonal Factor								
	Sawgrass Expressway	Seminole Expressway	Veterans Expressway	Southern Conn. Ext.	Polk Parkway	Suncoast Parkway	Western Beltway, Part C	I-4 Connector	Beachline East Expressway
July, 2014	0.92	0.91	0.92	0.93	0.88	0.92	0.90	0.76	0.98
August	0.95	0.93	0.94	0.90	0.92	0.93	0.88	0.80	0.97
September	0.95	0.95	0.95	0.84	0.94	0.95	0.84	0.86	0.89
October	1.00	1.01	1.01	0.91	1.00	1.01	0.91	0.93	0.96
November	0.96	0.94	0.95	0.89	0.94	0.97	0.88	0.90	0.87
December	1.00	0.97	1.01	1.00	0.99	1.00	0.97	0.96	0.98
January, 2015	0.99	0.97	0.98	0.97	0.99	0.99	0.98	1.00	0.95
February	1.06	1.05	1.03	1.07	1.06	1.03	1.08	1.10	1.00
March	1.05	1.07	1.05	1.15	1.09	1.08	1.17	1.15	1.13
April	1.06	1.09	1.07	1.14	1.09	1.08	1.17	1.18	1.08
May	1.03	1.06	1.04	1.09	1.05	1.03	1.11	1.18	1.12
June	1.02	1.07	1.04	1.11	1.05	1.01	1.11	1.20	1.08

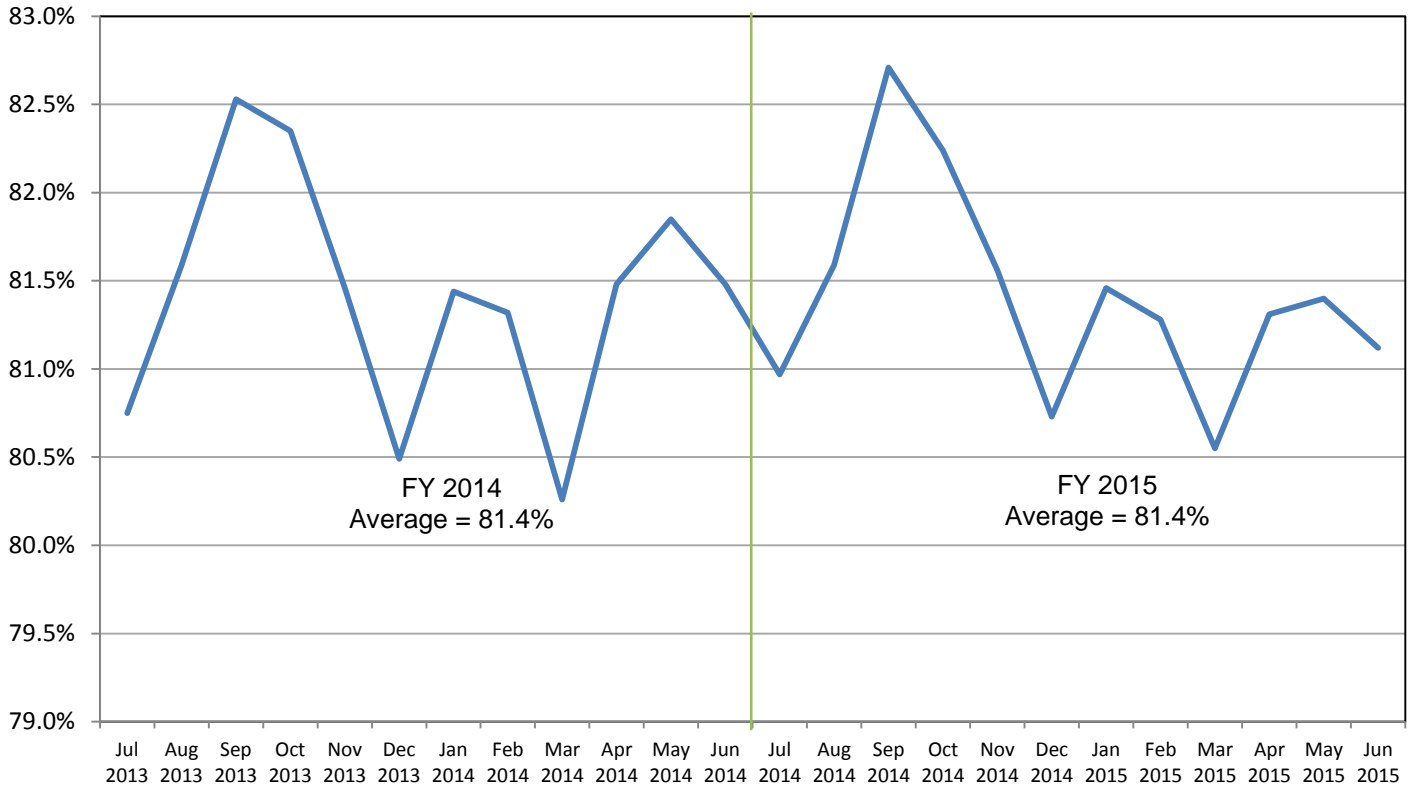
Source: Turnpike Enterprise Finance Office.

### Monthly SunPass Transponder Sales Inception to June 2015

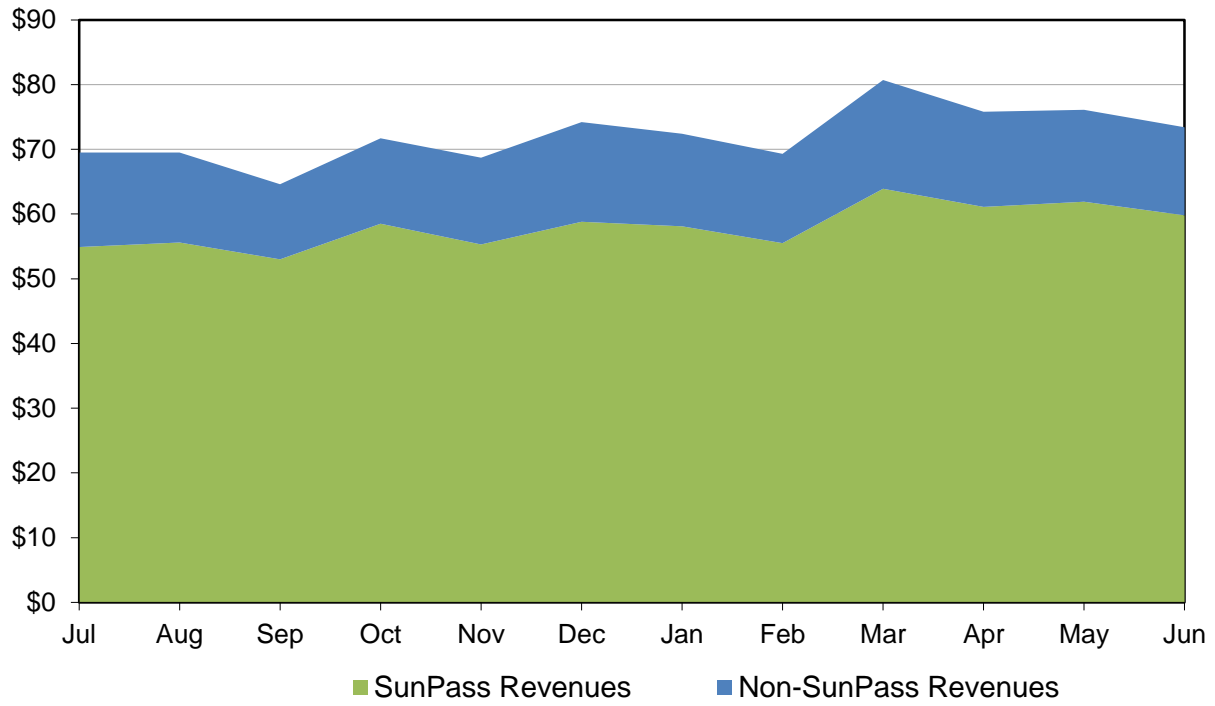


This graph shows the monthly SunPass transponder sales since inception. The significant increase in transponder sales during March 2004 is attributed to the cash toll rate increase implemented on the Turnpike system. A similar spike in sales in January 2007 is due to a one-day, half-off promotion in celebration of Turnpike's 50<sup>th</sup> anniversary. The successful launch of the Mini Tags in July 2008 boosted the total sales to nearly 76 thousand that month. The addition of Mini Tags has increased the average total monthly sales of transponders by fifty percent. Also, the implementation of All-Electronic Tolling (AET) on SR 821 (HEFT) in February 2011 significantly boosted transponder sales, as well as the June 2012 toll rate increase and subsequent AET conversion on the Sawgrass and Veterans Expressways.

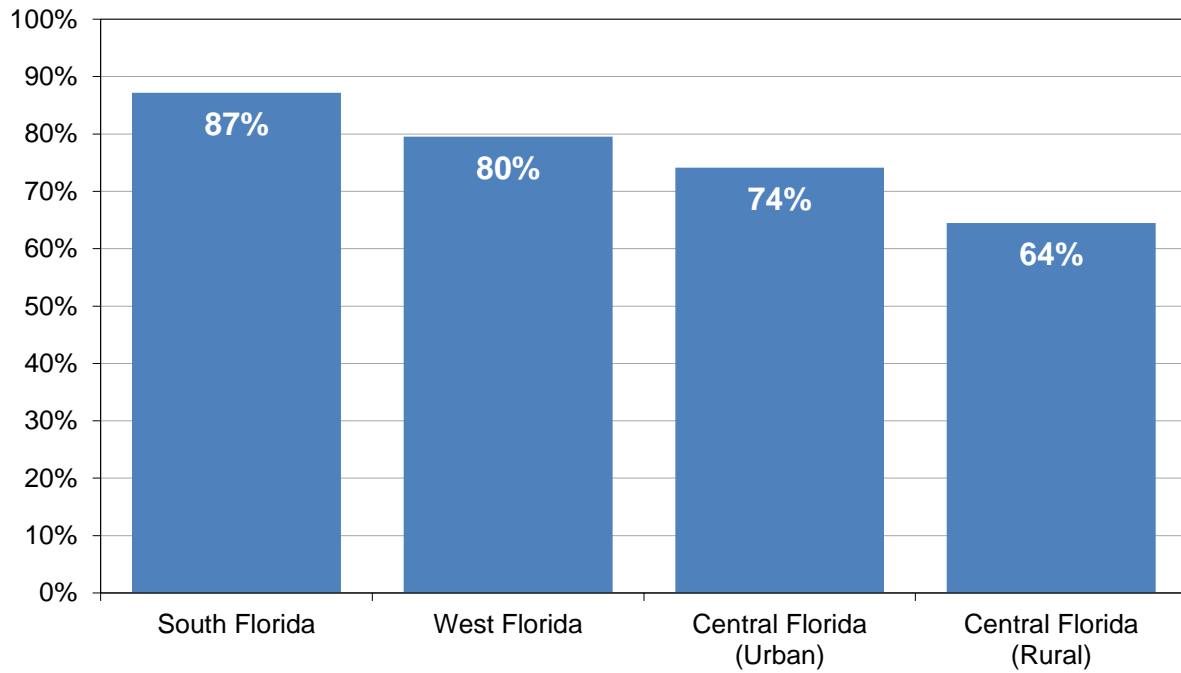
### SunPass Participation by Month FY 2014 and FY 2015



**Toll Revenue by Payment Type (In Millions)  
FY 2015**

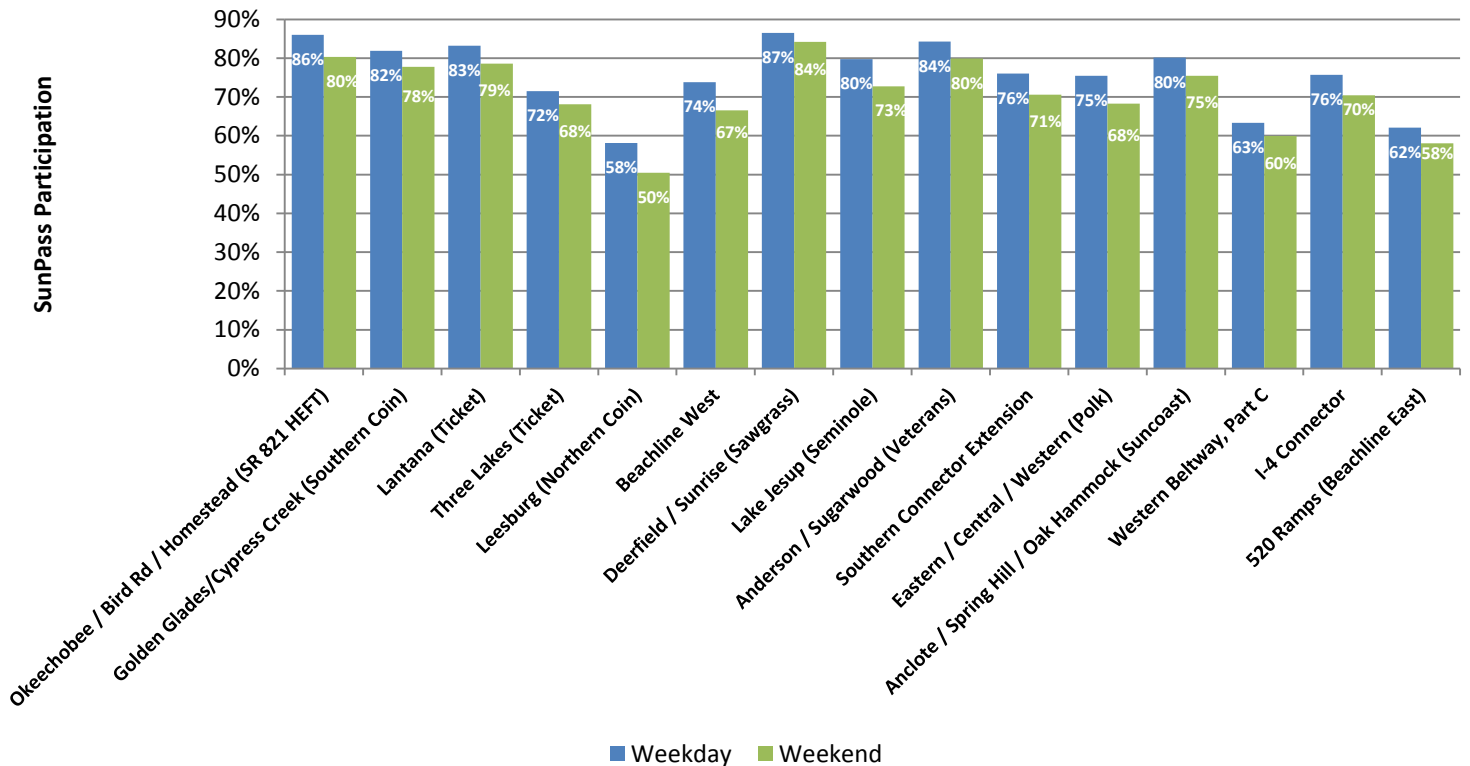


**Turnpike System  
SunPass Participation by Region  
FY 2015**



This graph depicts the average SunPass participation on the Turnpike System by region during FY 2015. As expected, SunPass participation in the region with mostly commuters was the highest (South Florida at 87 percent). On the other hand, SunPass participation in the tourist-oriented rural region of Central Florida was the lowest at 64 percent.

**Select Turnpike Mainline Toll Plazas  
Weekday vs. Weekend SunPass Participation  
FY 2015**

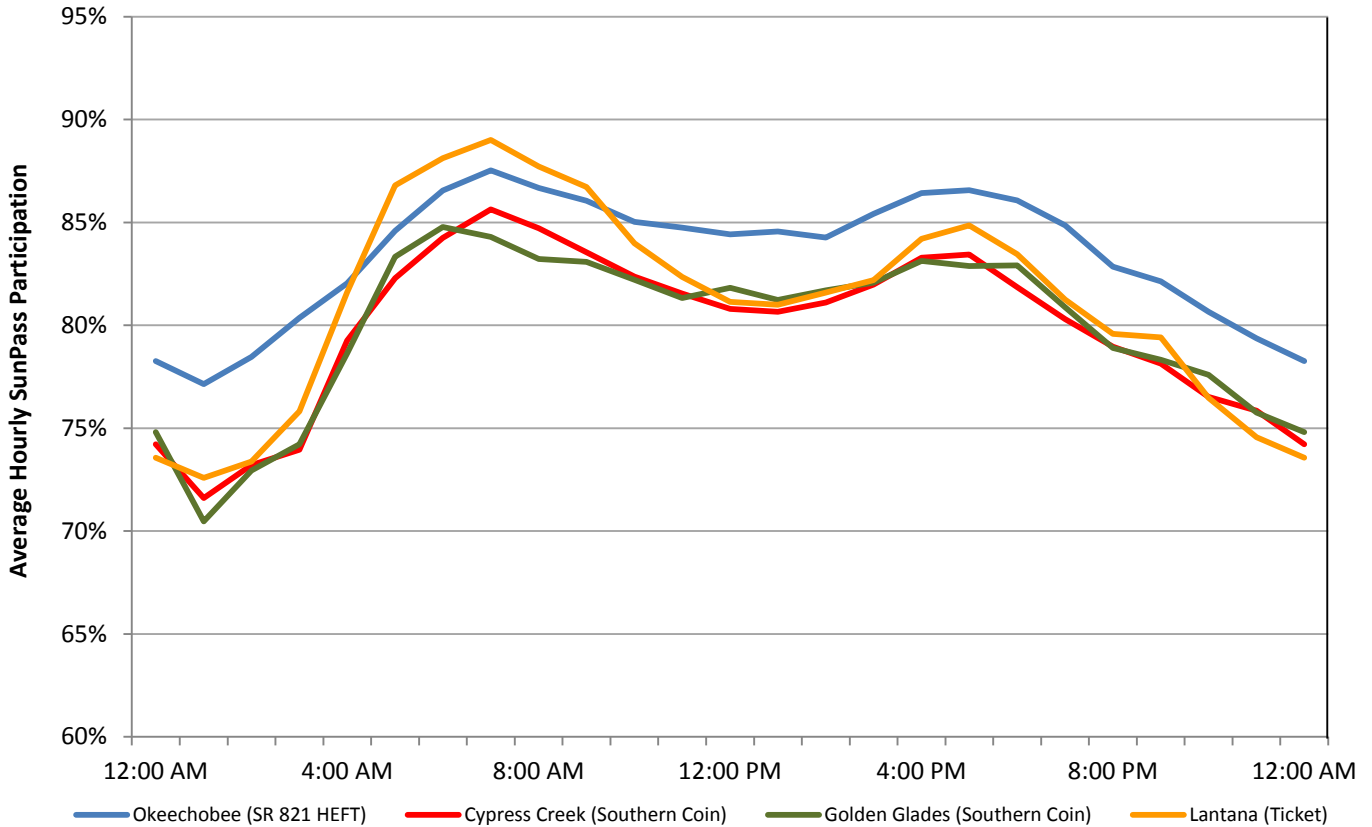


Source: Data obtained from Turnpike Enterprise Finance Office for the week beginning Monday, June 22, 2015.

A comparison between average weekday and weekend SunPass participation for a typical week in FY 2015 at select plazas is presented in the graph above.

As expected, average participation during weekdays exceeds weekend participation at each plaza. SunPass participation at the Deerfield mainline toll plaza, an All-Electronic Tolling location, reaches 87 percent during weekdays (the highest among all the facilities) and drops to 84 percent on the weekend. In particular, most of the commuter facilities, such as SR 821 (HEFT), Southern Coin System, southern part of the Ticket System (Lantana), Seminole Expressway and the Veterans Expressway show a notable variation between weekday and weekend participation.

## Mainline Toll Plazas – Southern Facilities Typical Weekday Hourly SunPass Participation

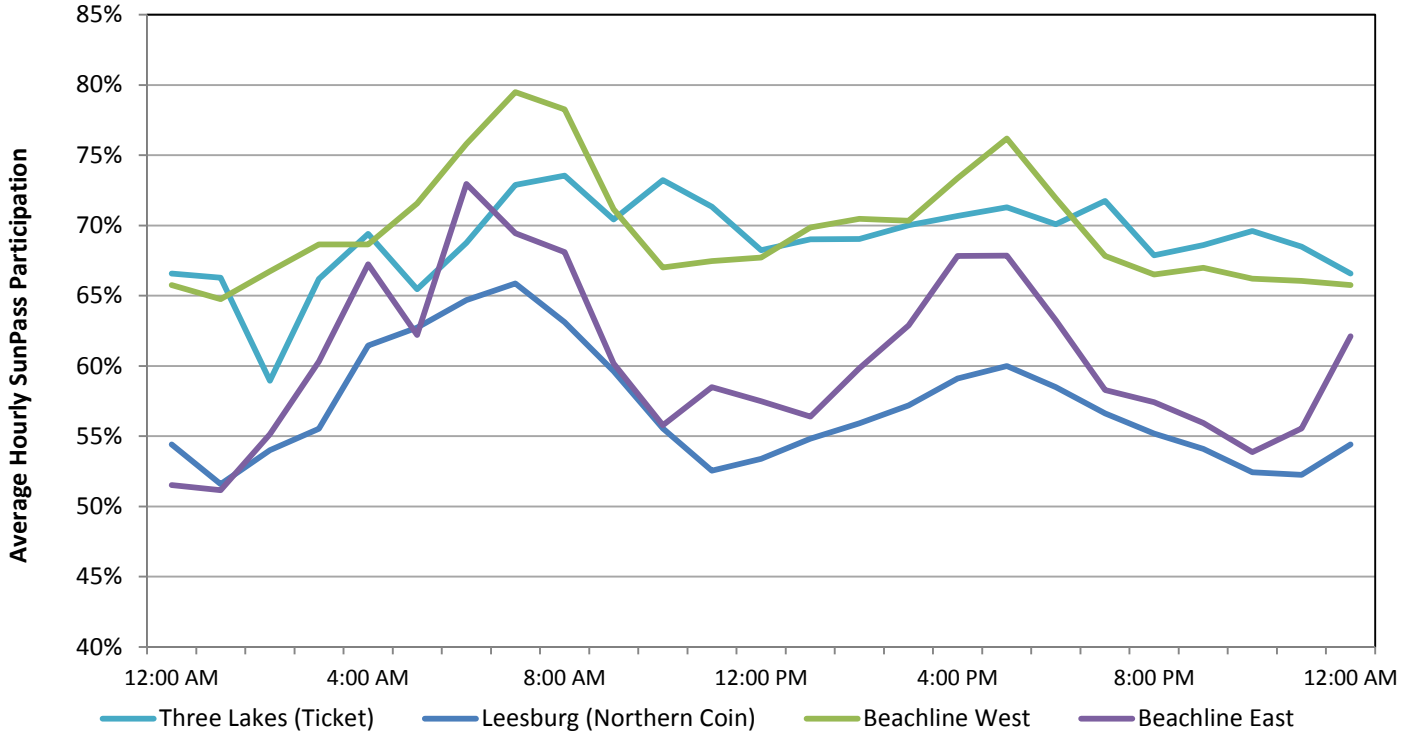


Source: Data obtained from Turnpike Enterprise Finance Office for the week beginning Monday, June 22, 2015.

Hourly variation indicates the fluctuations in SunPass participation during a full day (24-hour period). This graph shows the hourly SunPass participation on weekdays for a typical week at select mainline toll plazas on the southern components of the Mainline System. These components include SR 821 (HEFT), Southern Coin System, and the southern portion of the Ticket System (Lantana).

As depicted in the graph, SunPass participation on these facilities increased during the early morning and evening hours. Peak-hour participation at the Okeechobee and Lantana toll plazas reached 88 and 89 percent, respectively, in the morning. In general, the morning peak participation at all four toll plazas was higher than the evening peak participation.

## Mainline Toll Plazas – Northern Facilities Typical Weekday Hourly SunPass Participation



Source: Data obtained from Turnpike Enterprise Finance Office for the week beginning Monday, June 22, 2015.

This graph shows the hourly SunPass participation on weekdays for a typical week at select toll plazas on the northern components of the Mainline System. These components include the Northern Coin System, the northern portion of the Ticket System, and the Beachline West and East Expressways.

As depicted in the graph, SunPass participation at the Beachline West Expressway peaked at 79 during the morning peak hours. While the Leesburg toll plaza showed a significant rise in SunPass participation during the morning peak hours, it dropped in the late morning hours with some increase in the afternoon. In contrast, SunPass participation remained relatively stable throughout the day at the Three Lakes toll plaza. This pattern confirms the fact that long distance travelers and tourists are the primary users of that toll plaza.