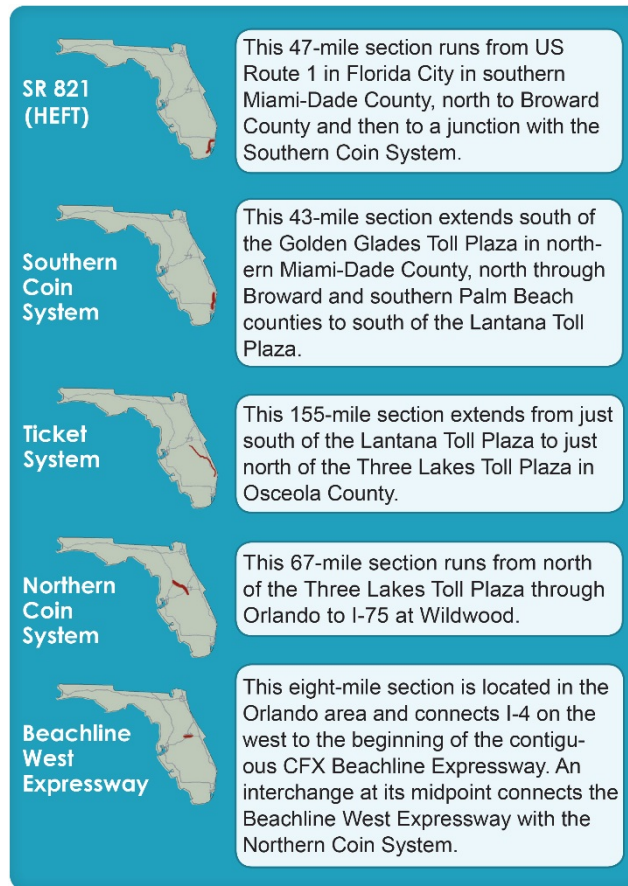


Mainline Description



The Mainline component of Florida's Turnpike extends for 320 miles and consists of five distinct sections as shown in the figure above. These sections are the SR 821 (HEFT), Southern Coin System, Ticket System, Northern Coin System and the Beachline West Expressway.

All of the Mainline sections (except for the Ticket System) use the coin method of toll collection. In this method, customers pay specific tolls at across-the-road plazas located along the Turnpike and at selective ramp locations. Toll fares are based on vehicle classification and method of payment (SunPass customers pay less). The Ticket System requires cash customers to obtain a ticket that provides evidence of entry onto the facility and remit that ticket upon exiting the system. The transaction for SunPass customers is processed electronically without a ticket. Toll revenues on the Ticket System are based on the distance traveled multiplied by the applicable toll rate.

Additionally, the Mainline components that use the coin toll collection operate with the 'N minus 1' toll rate formula to establish the truck (3+ axle) toll schedule. The Ticket System operates using a straight 'N', per-axle method.

**Mainline Transactions and Toll Revenue
FY 2016 vs. FY 2015**

Component	Transactions			Toll Revenue		
	FY 2016	FY 2015	Change	FY 2016	FY 2015	Change
SR 821 (HEFT)	201,599,959	191,673,312	5.2%	\$176,237,696	\$162,016,787	8.8%
Southern Coin System	161,231,611	148,718,627	8.4	166,994,382	150,188,770	11.2
Ticket System	54,561,425	51,327,186	6.3	172,239,353	162,410,971	6.1
Northern Coin System	80,884,052	72,644,821	11.3	138,928,303	124,585,961	11.5
Beachline West Expressway	31,040,783	28,750,515	8.0	26,986,584	24,829,782	8.7
Total	529,317,830	493,114,461	7.3%	\$681,386,318	\$624,032,271	9.2%

Source: Turnpike Enterprise Finance Office.

Mainline Summary
Quarterly Gross Toll Revenue Results
FY 2016 vs. FY 2015

Months	FY 2016	FY 2015	Variance	
			Amount	Change
July	\$56,644,461	\$50,502,802	\$6,141,659	12.2%
August	54,806,234	50,275,440	4,530,794	9.0
September	52,302,694	46,269,803	6,032,891	13.0
1st Quarter Subtotal	163,753,389	147,048,045	16,705,344	11.4
October	56,932,534	51,511,581	5,420,953	10.5
November	56,038,965	50,006,033	6,032,932	12.1
December	58,879,200	53,767,518	5,111,682	9.5
2nd Quarter Subtotal	171,850,699	155,285,132	16,565,567	10.7
January	55,979,815	52,287,561	3,692,254	7.1
February	55,546,650	49,628,857	5,917,793	11.9
March	62,434,081	58,307,093	4,126,988	7.1
3rd Quarter Subtotal	173,960,546	160,223,511	13,737,035	8.6
April	57,923,905	54,195,774	3,728,131	6.9
May	57,992,640	54,552,539	3,440,101	6.3
June	55,905,139	52,727,270	3,177,869	6.0
4th Quarter Subtotal	171,821,684	161,475,583	10,346,101	6.4
Annual Total	\$681,386,318	\$624,032,271	\$57,354,047	9.2%

Source: Turnpike Enterprise Finance Office.

Mainline Summary
Comparison of Daily Transactions by Month
FY 2016 vs. FY 2015

Month	Average Daily Transactions (ADT)*		Change
	FY 2016	FY 2015	
July	1,387,932	1,255,267	10.6%
August	1,361,542	1,268,599	7.3
September	1,382,756	1,260,393	9.7
October	1,439,161	1,330,852	8.1
November	1,427,923	1,297,862	10.0
December	1,452,100	1,347,289	7.8
January	1,407,110	1,337,791	5.2
February	1,504,694	1,416,140	6.3
March	1,547,464	1,460,889	5.9
April	1,511,181	1,442,019	4.8
May	1,464,854	1,396,783	4.9
June	1,472,028	1,404,392	4.8
AA DT	1,446,224	1,350,996	7.0%

Source: Turnpike Enterprise Finance Office.

* ADT at tolled plaza locations.

SR 821 (HEFT)
Traffic Comparison of FY 2016 vs. FY 2015

Interchange		Annual Average Daily Transactions (AADT)*		
MP	Location	FY 2016	FY 2015	Change
47	MIRAMAR PLAZA	See Southern Coin System		
47	NW 27th Avenue	12,249	11,331	8.1%
43	NW 57th Avenue	10,244	9,267	10.5
35	Okeechobee Road (US 27)	8,974	7,938	13.1
34	NW 106th Street	7,881	6,708	17.5
32	OKEECHOBEE PLAZA	115,396	108,539	6.3
31	NW 74th Street	16,370	17,407	(6.0)
29	NW 41st Street	18,224	17,407	4.7
27	NW 12th Street (Beacon Tradeport)	12,519	11,702	7.0
25	US 41/SW 8th Street (Tamiami Trail)	35,460	33,373	6.3
23	Bird Road (SW 40th Street)	33,930	33,182	2.3
22	BIRD ROAD PLAZA	135,848	131,619	3.2
20	SW 120th Street and Kendall Drive	30,241	28,803	5.0
16	Coral Reef Drive	11,662	12,013	(2.9)
10	HOMESTEAD PLAZA	90,315	84,906	6.4
9	Allapattah Road (SW 112th Avenue)	4,488	4,136	8.5
5	Biscayne Drive (SW 288th Street)	3,808	3,636	4.7
2	Campbell Drive (SW 312th Street)	3,209	3,165	1.4
Total		550,818	525,132	4.9%

Source: Turnpike Enterprise Finance Office.

* AADT at tolled plaza locations.

SR 821 (HEFT)
Quarterly Revenue Results
FY 2016 vs. FY 2015

Months	FY 2016	FY 2015	Variance	
			Amount	Change
July	\$14,623,248	\$12,992,849	\$1,630,399	12.5%
August	14,540,928	13,386,408	1,154,520	8.6
September	14,346,441	12,954,806	1,391,635	10.7
1st Quarter Subtotal	43,510,617	39,334,063	4,176,554	10.6
October	15,157,804	13,785,538	1,372,266	10.0
November	14,413,163	12,909,890	1,503,273	11.6
December	14,810,482	13,510,080	1,300,402	9.6
2nd Quarter Subtotal	44,381,449	40,205,508	4,175,941	10.4
January	14,394,592	13,578,920	815,672	6.0
February	14,375,188	12,913,855	1,461,333	11.3
March	15,579,003	14,521,740	1,057,263	7.3
3rd Quarter Subtotal	44,348,783	41,014,515	3,334,268	8.1
April	14,911,745	14,084,993	826,752	5.9
May	14,755,182	13,922,667	832,515	6.0
June	14,329,920	13,455,041	874,879	6.5
4th Quarter Subtotal	43,996,847	41,462,701	2,534,146	6.1
Annual Total	\$176,237,696	\$162,016,787	\$14,220,909	8.8%

Source: Turnpike Enterprise Finance Office.

Southern Coin System
Traffic Comparison of FY 2016 vs. FY 2015

Interchange		Annual Average Daily Transactions (AADT)*		
		FY 2016	FY 2015	Change
MP	Location			
86	Boynton Beach Boulevard	18,687	17,758	5.2%
81	Delray Beach (Atlantic Avenue)	14,634	13,586	7.7
75	Boca Raton (Glades Road)	21,003	19,968	5.2
69	Sample Road	9,614	9,278	3.6
67	Coconut Creek Parkway	13,361	12,632	5.8
63	CYPRESS CREEK PLAZA	115,651	105,600	9.5
62	Commercial Boulevard	30,276	27,452	10.3
58	Sunrise Boulevard	16,947	15,734	7.7
53	Griffin Road	15,861	15,148	4.7
49	Hollywood Boulevard	23,302	22,027	5.8
47	County Line Road	4,932	4,490	9.8
47	NW 27th Avenue	3,441	3,234	6.4
47	MIRAMAR PLAZA	46,680	43,290	7.8
2X	Dolphin Center	10,983	10,169	8.0
0X	GOLDEN GLADES PLAZA	95,153	87,082	9.3
Total		440,525	407,448	8.1%

Source: Turnpike Enterprise Finance Office.

* AADT at tolled plaza locations.

Southern Coin System
Quarterly Revenue Results
FY 2016 vs. FY 2015

Months	FY 2016	FY 2015	Variance	
			Amount	Change
July	\$11,628,318	\$9,977,470	\$1,650,848	16.5%
August	11,486,669	10,005,032	1,481,637	14.8
September	11,280,388	9,534,611	1,745,777	18.3
Lantana Adjustment *	5,643,371	5,148,782	494,589	9.6
1st Quarter Subtotal	40,038,746	34,665,895	5,372,851	15.5
October	12,087,394	10,632,801	1,454,593	13.7
November	11,590,564	10,147,618	1,442,946	14.2
December	12,205,864	11,038,037	1,167,827	10.6
Lantana Adjustment *	6,004,000	5,496,158	507,842	9.2
2nd Quarter Subtotal	41,887,822	37,314,614	4,573,208	12.3
January	11,909,731	11,010,405	899,326	8.2
February	11,934,571	10,519,381	1,415,190	13.5
March	12,989,542	11,907,766	1,081,776	9.1
Lantana Adjustment *	6,153,502	5,726,440	427,062	7.5
3rd Quarter Subtotal	42,987,346	39,163,992	3,823,354	9.8
April	12,249,396	11,333,295	916,101	8.1
May	12,150,704	11,199,744	950,960	8.5
June	11,726,066	10,831,150	894,916	8.3
Lantana Adjustment *	5,954,302	5,680,080	274,222	4.8
4th Quarter Subtotal	42,080,468	39,044,269	3,036,199	7.8
Annual Total	\$166,994,382	\$150,188,770	\$16,805,612	11.2%

Source: Turnpike Enterprise Finance Office.

* Amount based on actual two-way revenue traffic at the plaza multiplied by an average adjustment rate.

Ticket System
Traffic Comparison of FY 2016 vs. FY 2015

Interchange		Annual Average Daily Transactions (AADT)*		
MP	Location	FY 2016	FY 2015	Change
236	THREE LAKES PLAZA	15,724	14,946	5.2%
193	Yeehaw Junction	3,984	3,669	8.6
152	Fort Pierce	9,417	8,868	6.2
142	Port St. Lucie	6,350	6,109	3.9
138	Becker Road	2,578	2,332	10.5
133	Stuart	5,872	5,553	5.7
116	Jupiter	10,994	10,274	7.0
109	Palm Beach Gardens (PGA Boulevard)	8,688	8,467	2.6
107	SR 710	7,305	6,647	9.9
99	West Palm Beach (Okeechobee Boulevard)	9,150	8,763	4.4
98	Jog Road	2,611	2,310	13.0
97	SR 80 (Southern Boulevard)	13,545	12,834	5.5
93	Lake Worth	13,256	12,712	4.3
88	LANTANA PLAZA	39,602	37,139	6.6
Total		149,076	140,623	6.0%

Source: Turnpike Enterprise Finance Office.

* AADT based on paying transactions.

Ticket System
Quarterly Revenue Results
FY 2016 vs. FY 2015

Months	FY 2016	FY 2015	Variance	
			Amount	Change
July	\$17,920,419	\$16,446,123	\$1,474,296	9.0%
August	17,023,215	16,362,973	660,242	4.0
September	15,412,281	14,002,184	1,410,097	10.1
Lantana Adjustment*	(5,643,371)	(5,148,782)	(494,589)	9.6
Three Lakes Adjustment**	(3,712,216)	(3,458,796)	(253,420)	7.3
1st Quarter Subtotal	41,000,328	38,203,702	2,796,626	7.3
October	17,268,927	16,024,695	1,244,232	7.8
November	17,769,604	16,320,005	1,449,599	8.9
December	18,933,967	17,787,040	1,146,927	6.4
Lantana Adjustment*	(6,004,000)	(5,496,158)	(507,842)	9.2
Three Lakes Adjustment**	(4,024,009)	(3,698,332)	(325,677)	8.8
2nd Quarter Subtotal	43,944,489	40,937,250	3,007,239	7.3
January	17,574,883	16,707,863	867,020	5.2
February	16,847,867	15,619,539	1,228,328	7.9
March	19,927,810	19,080,463	847,347	4.4
Lantana Adjustment*	(6,153,502)	(5,726,440)	(427,062)	7.5
Three Lakes Adjustment**	(4,018,301)	(3,784,864)	(233,437)	6.2
3rd Quarter Subtotal	44,178,757	41,896,561	2,282,196	5.4
April	17,790,927	16,892,264	898,663	5.3
May	18,110,132	17,478,367	631,765	3.6
June	17,134,422	16,522,653	611,769	3.7
Lantana Adjustment*	(5,954,302)	(5,680,080)	(274,222)	4.8
Three Lakes Adjustment**	(3,965,400)	(3,839,746)	(125,654)	3.3
4th Quarter Subtotal	43,115,779	41,373,458	1,742,321	4.2
Annual Total	\$172,239,353	\$162,410,971	\$9,828,382	6.1%

Source: Turnpike Enterprise Finance Office.

* Allocated to Southern Coin System, amount based on actual two-way revenue traffic at the plaza multiplied by an average adjustment rate.

** Allocated to Northern Coin System, amount based on actual two-way revenue traffic at the plaza multiplied by an average adjustment rate.

**Northern Coin System
Traffic Comparison of FY 2016 vs. FY 2015**

Interchange		Annual Average Daily Transactions (AADT)*		
MP	Location	FY 2016	FY 2015	Change
296	CR 470	1,298	1,086	19.5%
289	US 27/Leesburg North	5,731	5,399	6.1
288	LEESBURG PLAZA	39,644	36,619	8.3
285	US 27/Leesburg South	11,169	10,090	10.7
272	SR 50	37,141	33,857	9.7
259	Orlando/I-4	29,196	26,895	8.6
251	Consulate Drive	7,844	6,821	15.0
254	Orlando South	32,778	29,026	12.9
251	SR 417/Northbound-on **	3,448	0	N/A
249	Osceola Parkway	23,420	20,448	14.5
244	Kissimmee/St. Cloud	20,219	18,556	9.0
240	Kissimmee Park Road	12,120	10,230	18.5
Total		224,008	199,027	12.6%

Source: Turnpike Enterprise Finance Office.

* AADT at tolled plaza locations.

** Opened to traffic on May 16, 2016.

**Northern Coin System
Quarterly Revenue Results
FY 2016 vs. FY 2015**

Months	FY 2016	FY 2015	Variance	
			Amount	Change
July	\$10,217,424	\$9,087,095	\$1,130,329	12.4%
August	9,617,248	8,577,894	1,039,354	12.1
September	9,223,353	7,976,564	1,246,789	15.6
Three Lakes Adjustment *	3,712,216	3,458,796	253,420	7.3
1st Quarter Subtotal	32,770,241	29,100,349	3,669,892	12.6
October	10,166,669	9,002,823	1,163,846	12.9
November	10,095,695	8,709,506	1,386,189	15.9
December	10,625,343	9,360,215	1,265,128	13.5
Three Lakes Adjustment *	4,024,009	3,698,332	325,677	8.8
2nd Quarter Subtotal	34,911,716	30,770,876	4,140,840	13.5
January	9,845,076	8,910,810	934,266	10.5
February	9,927,136	8,569,821	1,357,315	15.8
March	11,505,229	10,409,937	1,095,292	10.5
Three Lakes Adjustment *	4,018,301	3,784,864	233,437	6.2
3rd Quarter Subtotal	35,295,742	31,675,432	3,620,310	11.4
April	10,615,478	9,681,666	933,812	9.6
May	10,634,801	9,750,567	884,234	9.1
June	10,734,925	9,767,325	967,600	9.9
Three Lakes Adjustment *	3,965,400	3,839,746	125,654	3.3
4th Quarter Subtotal	35,950,604	33,039,304	2,911,300	8.8
Annual Total	\$138,928,303	\$124,585,961	\$14,342,342	11.5%

Source: Turnpike Enterprise Finance Office.

* Amount based on actual two-way revenue traffic at the plaza multiplied by an average adjustment rate.

**Beachline West Expressway
Comparison of Daily Transactions by Month
FY 2016 vs. FY 2015**

Month	Average Daily Transactions (ADT)*		Change
	FY 2016	FY 2015	
July	82,792	74,586	11.0%
August	78,414	72,731	7.8
September	77,676	70,083	10.8
October	83,211	77,425	7.5
November	83,076	74,150	12.0
December	85,483	77,591	10.2
January	83,816	77,687	7.9
February	88,558	82,807	6.9
March	92,441	88,302	4.7
April	88,173	84,500	4.3
May	87,780	82,342	6.6
June	86,426	83,277	3.8
AADT	84,811	78,766	7.7%

Source: Turnpike Enterprise Finance Office.

* ADT at tolled plaza location.

**Beachline West Expressway
Quarterly Revenue Results
FY 2016 vs. FY 2015**

Months	FY 2016	FY 2015	Variance	
			Amount	Change
July	\$2,255,052	\$1,999,264	\$255,788	12.8%
August	2,138,174	1,943,134	195,040	10.0
September	2,040,231	1,801,637	238,594	13.2
1st Quarter Subtotal	6,433,457	5,744,035	689,422	12.0
October	2,251,740	2,065,723	186,017	9.0
November	2,169,939	1,919,014	250,925	13.1
December	2,303,544	2,072,147	231,397	11.2
2nd Quarter Subtotal	6,725,223	6,056,884	668,339	11.0
January	2,255,533	2,079,563	175,970	8.5
February	2,461,888	2,006,262	455,626	22.7
March	2,432,496	2,387,187	45,309	1.9
3rd Quarter Subtotal	7,149,917	6,473,012	676,905	10.5
April	2,356,359	2,203,556	152,803	6.9
May	2,341,821	2,201,194	140,627	6.4
June	1,979,807	2,151,101	(171,294)	(8.0)
4th Quarter Subtotal	6,677,987	6,555,851	122,136	1.9
Annual Total	\$26,986,584	\$24,829,782	\$2,156,802	8.7%

Source: Turnpike Enterprise Finance Office.

**Mainline
Seasonal Traffic Variation
FY 2016**

Month	Seasonal Factor				
	SR 821 (HEFT)	Southern Coin System	Ticket System	Northern Coin System	Beachline West Expressway
July, 2015	0.96	0.95	0.95	0.97	0.98
August	0.96	0.94	0.93	0.93	0.92
September	0.98	0.96	0.92	0.92	0.92
October	1.01	0.99	0.98	0.98	0.98
November	0.99	0.98	1.00	0.98	0.98
December	1.00	1.00	1.02	1.02	1.01
January, 2016	0.97	0.98	1.00	0.95	0.99
February	1.03	1.06	1.05	1.02	1.04
March	1.05	1.07	1.10	1.09	1.09
April	1.04	1.05	1.04	1.05	1.04
May	1.00	1.01	1.01	1.03	1.04
June	1.01	1.01	1.00	1.07	1.02

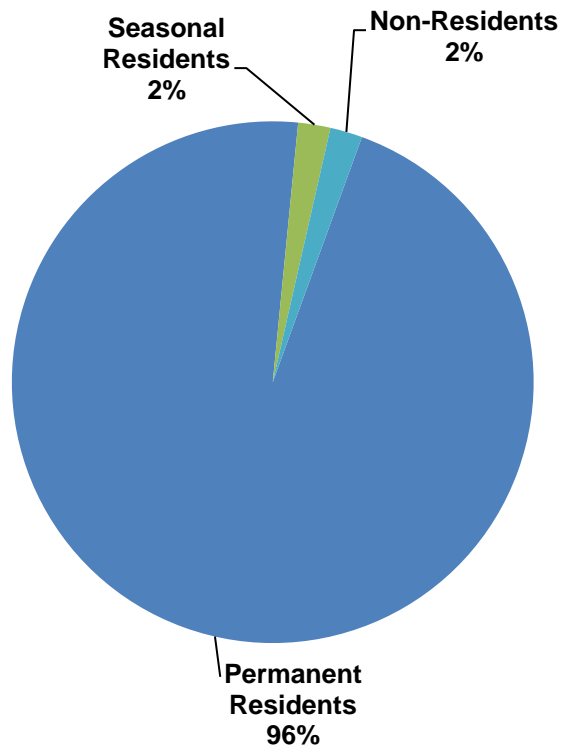
Source: Turnpike Enterprise Finance Office.

**Mainline
FY 2016 Toll Revenue Forecast (\$000)
FY 2017 through FY 2027**

Fiscal Year	Estimated Gross Toll Revenue (\$000)					
	SR 821 (HEFT)	Southern Coin	Ticket	Northern Coin	Beachline West	Total Mainline
2017	\$177,111	\$167,908	\$173,284	\$139,955	\$27,374	\$685,632
2018	187,874	173,458	178,169	148,583	29,570	717,654
2019	192,913	176,218	180,969	150,887	30,458	731,445
2020	197,881	176,952	174,308	155,710	34,099	738,950
2021	202,949	179,790	177,103	158,357	35,332	753,531
2022	212,246	182,491	179,764	162,584	36,589	773,674
2023	217,709	185,234	182,466	166,595	38,384	790,388
2024	223,079	188,017	185,207	163,180	39,663	799,146
2025	228,342	190,842	187,990	166,710	40,985	814,869
2026	233,721	193,710	190,735	170,183	42,313	830,662
2027	239,217	196,620	193,601	173,837	43,681	846,956

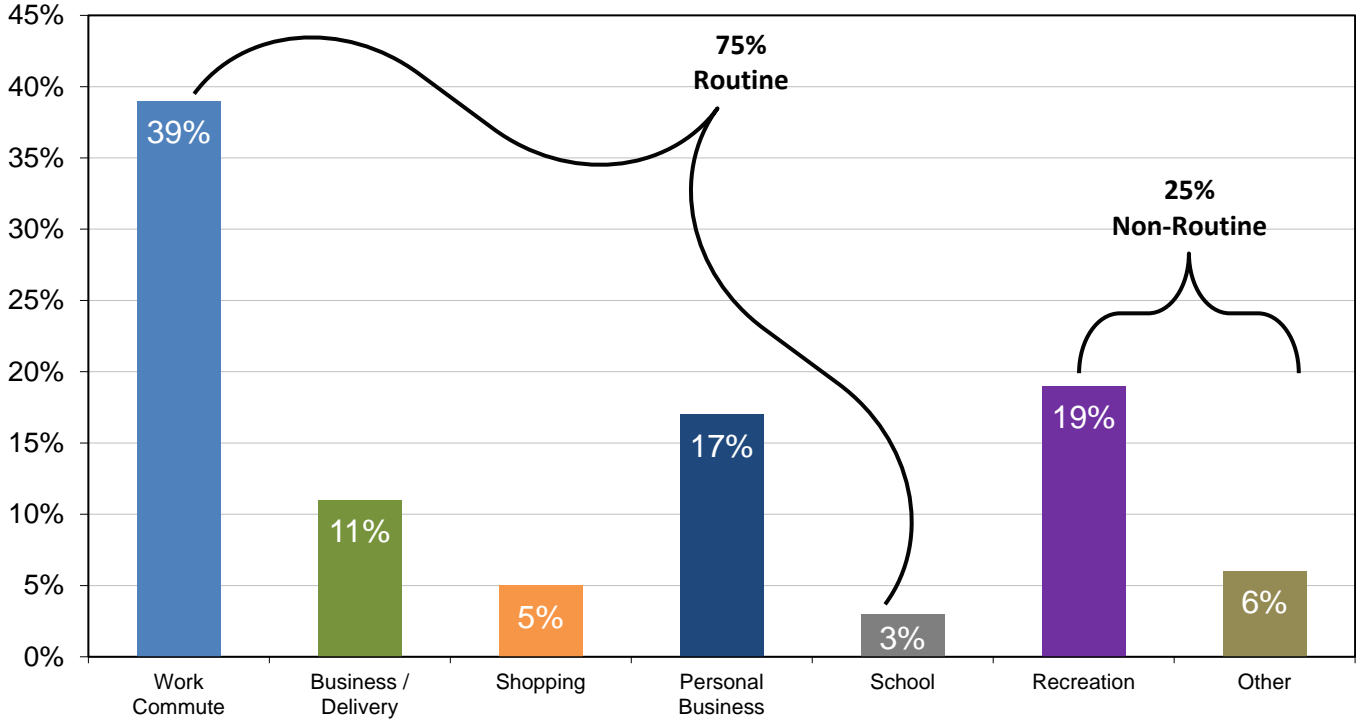
Note: The above revenue forecasts reflect the implementation of All-Electronic Tolling on: the Southern Coin System from I-595 to Lantana and the Ticket System in FY 2020; and the Northern Coin System in FY 2024. The forecasts also include the addition of express lanes on sections of the HEFT from north of SW 137th Avenue to SR 836 in FY 2018, and from SR 836 to NW 27th Avenue in FY 2022. Similarly, the Northern Coin System reflects impact from express lanes from Osceola Parkway to Orlando South in FY 2020, from Kissimmee South to Osceola Parkway in FY 2022, and from SR 50 to Minneola in FY 2024. Further, the Beachline West forecast includes the impact from express lanes on the entire facility starting in FY 2020. Additionally, the forecasts also reflect new interchanges opening on the Northern Coin System at Minneola and Sand Lake Road in FY 2018 and FY 2023, respectively.

Florida's Turnpike System Customer Mix



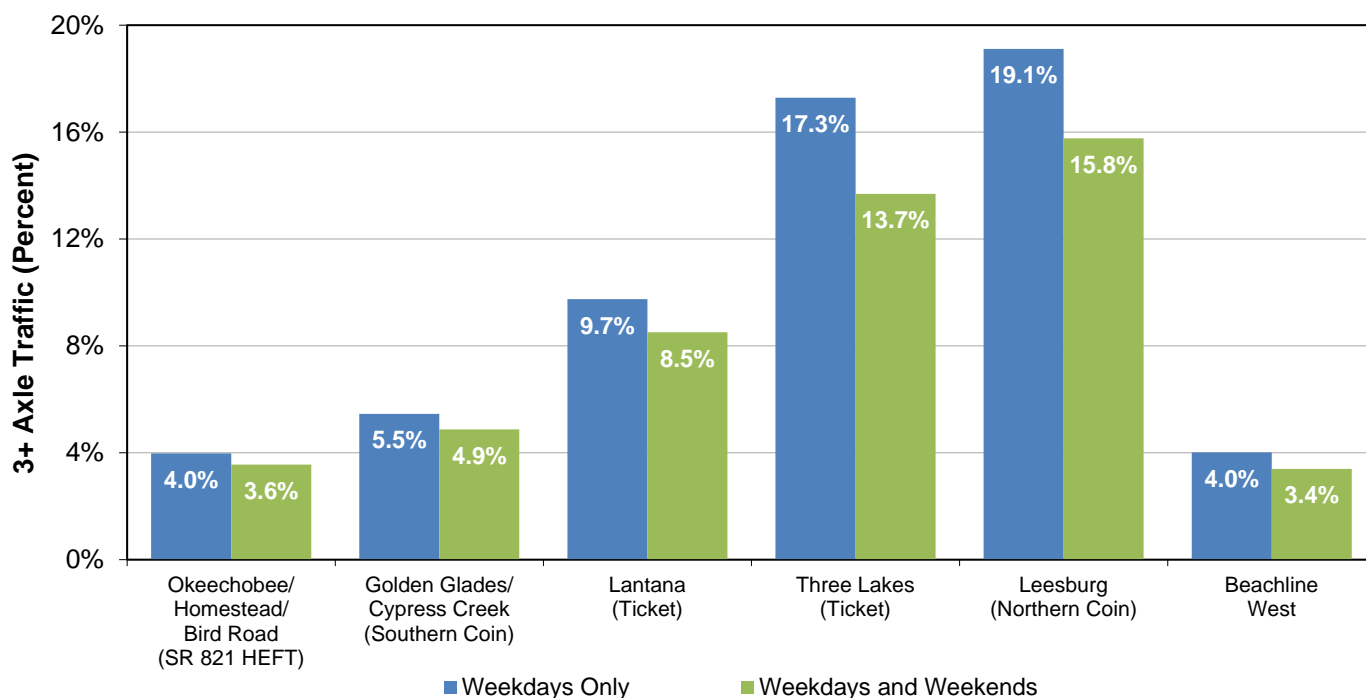
Source: Turnpike Systemwide Customer Survey Report

Florida's Turnpike System Trip Purpose



Source: Turnpike System wide Customer Survey Report

Mainline Toll Plaza 3+ Axle Vehicles in the Vehicle Mix

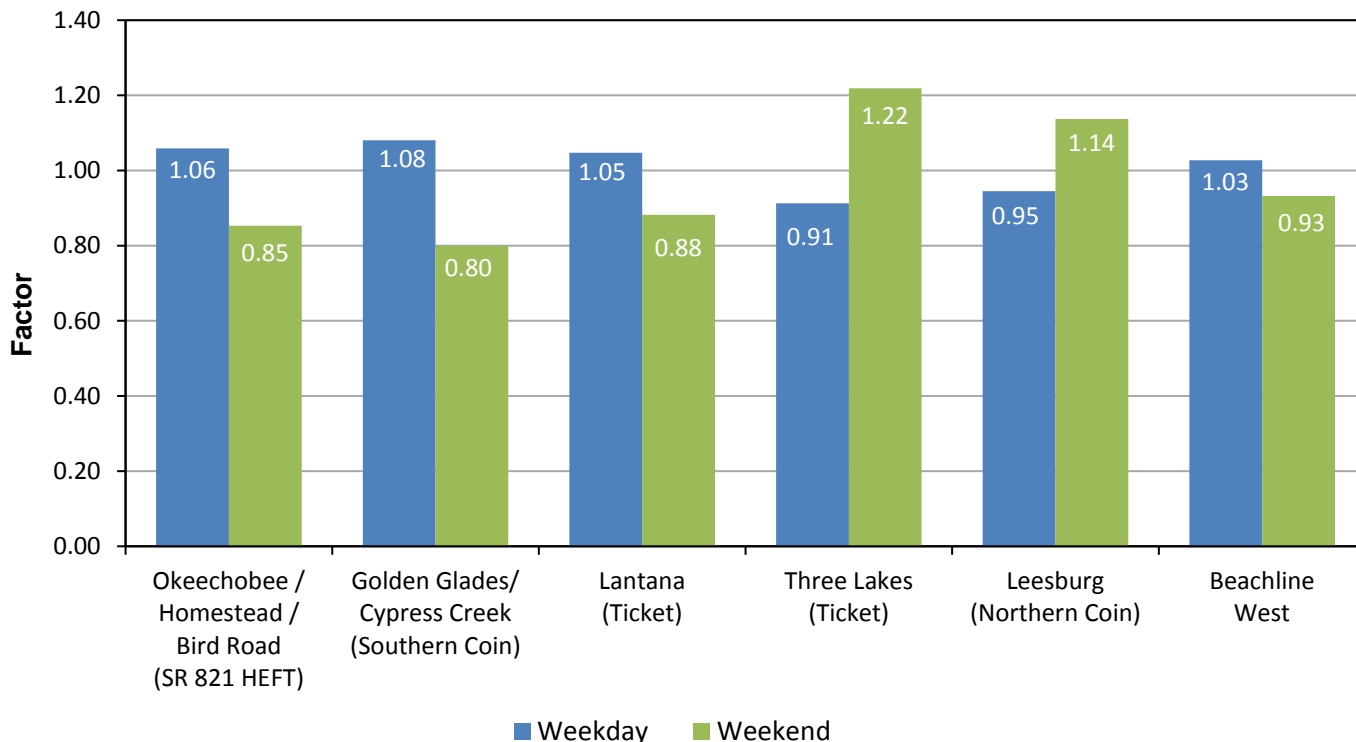


Source: Data obtained from Turnpike Enterprise Finance Office for the week beginning November 2, 2015.

This graph provides an overview of the percentage of truck traffic by Mainline facility. As in prior years, the highest percentage of 3+ axle traffic was reported at the Leesburg Toll Plaza on the Northern Coin System at 19 percent for weekdays. The Beachline West Expressway and SR 821 (HEFT), facilities that largely serve the commuters and the tourists, reported the lowest percentage of 3+ axle traffic at approximately 3.5 percent for the entire week.

Also indicated is the difference between the southern and northern ends of the Ticket System (Lantana and Three Lakes, respectively). Traffic patterns at Lantana are trending towards those of the Southern Coin due to increasing urban development in the area. On the other hand, Three Lakes demonstrates patterns similar to the Northern Coin since it serves long distance travelers such as multi-axle commercial vehicles and tourists.

Mainline Toll Plazas Weekend vs. Weekday Factors



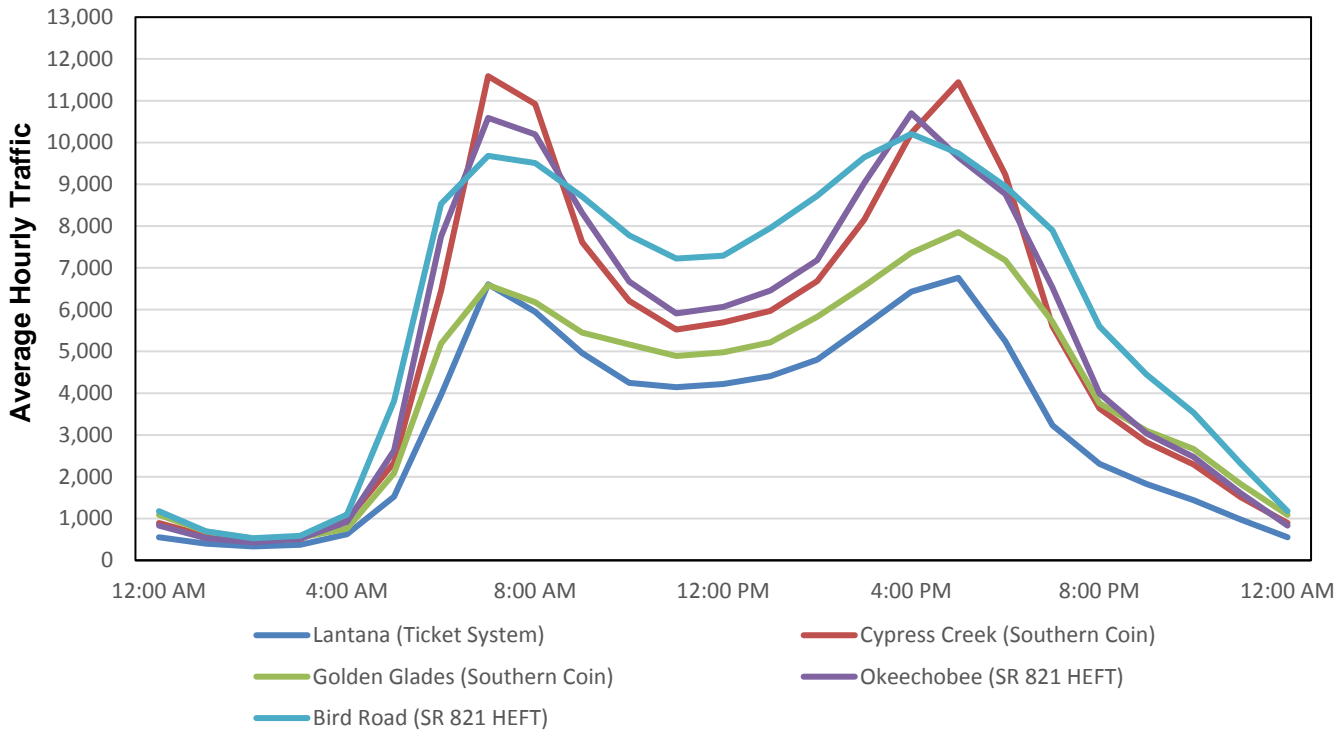
Source: Data obtained from Turnpike Enterprise Finance Office for the week beginning November 2, 2015.

Note: A Factor of 1.0 represents a typical average day over the 7-day period.

This analysis illustrates that Turnpike traffic varies between weekdays and weekends. For example, a Turnpike facility in an urban area may be heavily traveled by commuters during the week, but substantially less utilized over the weekend. The analysis differentiates between facilities more commonly used for business-related/commuter purposes and facilities predominantly used for tourist/recreational purposes. The average daily transaction (ADT) volumes normally grouped are weekdays (Monday through Friday) and weekends (Saturday and Sunday).

Assuming that an average day in a seven-day week represents the baseline for comparison between weekdays and weekends, a weekday/weekend factor is calculated for a representative group of mainline toll plazas. These factors are shown in the graph above. As expected, the weekday factors at the plazas that primarily serve commuter traffic (i.e., SR 821 HEFT, Southern Coin System, and Lantana) are 5 to 8 percent higher than the average traffic for the entire week. Conversely, weekend traffic at these plazas is 12 to 20 percent lower than the weekly average. On the other hand, traffic at Three Lakes and the Northern Coin System indicates significantly higher weekend versus weekday traffic. This trend is also expected since these plazas predominately serve tourists and recreational travelers.

Mainline Toll Plazas – Southern Facilities Typical Hourly Weekday Traffic

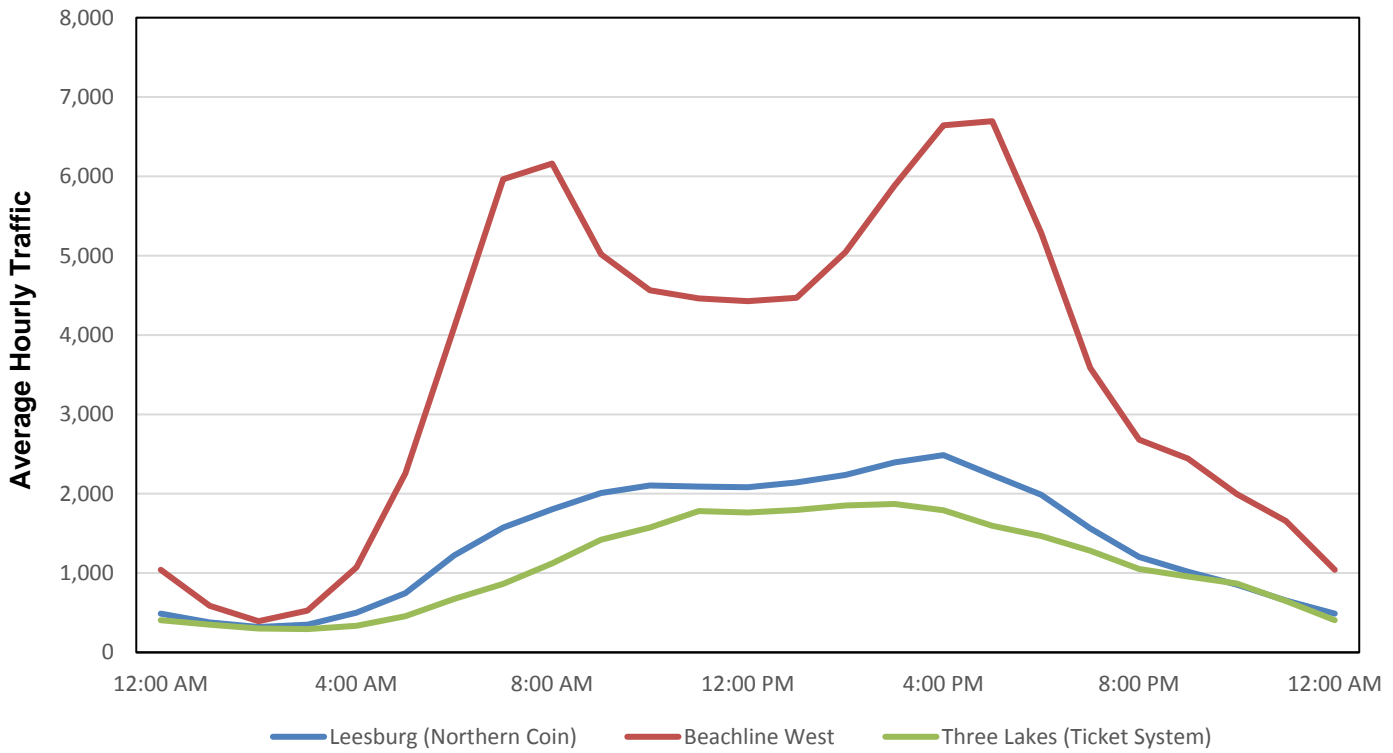


Source: Data obtained from Turnpike Enterprise Finance Office for the 5-day period starting Monday, November 2, 2015.

This graph shows the hourly traffic on weekdays in a typical week at select mainline toll plazas for the southern components of the Mainline (these include SR 821 HEFT, the Southern Coin System and the southern portion of the Ticket System).

As indicated in the graph, travel on these facilities increased notably during the early morning and evening hours. For example, for the mainline plazas located on SR 821 (HEFT), Southern Coin System and Ticket System, an average of 42 percent of all daily traffic occurred during the peak periods (6:00 AM to 9:00 AM and 4:00 PM to 7:00 PM). The Lantana toll plaza on the Ticket System has increasingly become commuter-oriented in the last several years. Its peaking traffic volumes have increased significantly similar to SR 821 (HEFT) and Southern Coin as more travelers in the Lake Worth and West Palm Beach areas utilize the Turnpike for their daily commute.

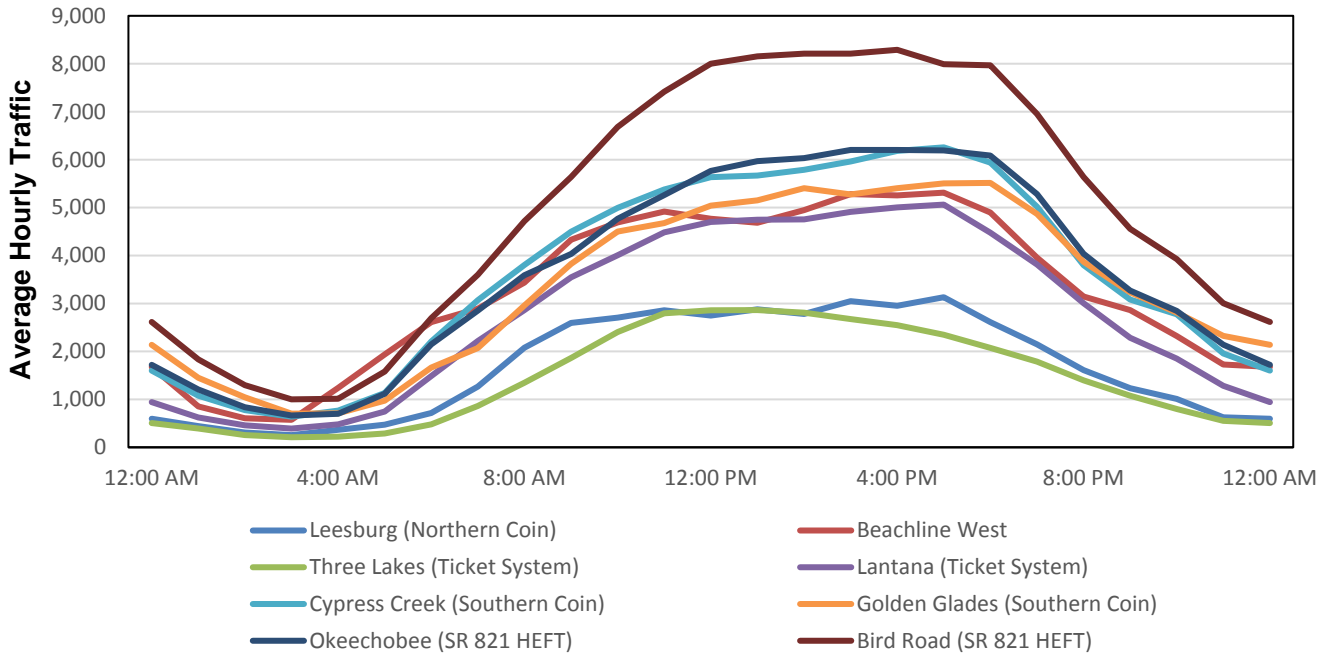
Mainline Toll Plazas – Northern Facilities Typical Hourly Weekday Traffic



Source: Data obtained from Turnpike Enterprise Finance Office for the 5-day period starting on Monday, November 2, 2015.

This graph shows the hourly traffic on weekdays in a typical week at select mainline toll plazas for the northern components of the Mainline (these include the Northern Coin System, the northern portion of the Ticket System and the Beachline West Expressway). As depicted in the graph, travel on these facilities increased during the early morning hours and remained relatively constant throughout the midday and early evening periods. The absence of a definite morning and evening peak period (with some exception to the Beachline West Expressway) indicates that the toll plazas along these Mainline facilities are less commuter-oriented than those located along the southern components of the Mainline. These results also are consistent with the FY 2015 results.

Mainline Toll Plazas Typical Hourly Weekend Traffic



Source: Data obtained from Turnpike Enterprise Finance Office for the weekend of Monday, November 2, 2015.

This graph presents the hourly traffic at the toll plazas of the Mainline components during a typical weekend. As the graph demonstrates, travel on these facilities peaked in the afternoon and remained relatively constant until the evening hours.