

Florida's Turnpike System
SunPass Participation (Percent of Transactions)

Turnpike Facility	SunPass Participation			June 2016 SunPass Participation
	FY 2016	FY 2015	Change	
HEFT	85.0%	85.9%	-0.9%	84.4%
Southern Coin System	82.1	81.6	0.5	81.9
Ticket System	82.8	81.9	0.9	83.5
Northern Coin System	74.1	72.2	1.9	74.2
Beachline West Expressway	74.6	72.2	2.4	75.3
Total Mainline	81.6%	81.4%	0.2%	81.4%
Sawgrass Expressway	87.8	88.2	-0.4	87.6
Seminole Expressway	81.9	81.4	0.5	82.0
Veterans Expressway	83.3	84.4	-1.1	82.9
Southern Connector Extension	78.4	77.5	0.9	78.4
Polk Parkway	76.0	74.8	1.2	76.7
Suncoast Parkway	80.4	81.2	-0.8	80.6
Western Beltway, Part C	73.4	71.4	2.0	72.6
I-4 Connector	75.9	76.2	-0.3	75.9
Beachline East Expressway	65.3	63.9	1.4	65.4
Total Expansion Projects	81.2%	81.4%	-0.2%	81.1%
Total System	81.5%	81.4%	0.1%	81.3%

Source: Turnpike Enterprise Finance Office.

SunPass Transactions and Participation
FY 2016

Turnpike Facility	Annual Transactions			Participation
	SunPass	Non-SunPass	Total	
HEFT	171,370,163	30,229,796	201,599,959	85.0%
Southern Coin System	132,350,903	28,880,708	161,231,611	82.1
Ticket System	45,172,324	9,389,101	54,561,425	82.8
Northern Coin System	59,967,861	20,916,191	80,884,052	74.1
Beachline West Expressway	23,143,113	7,897,670	31,040,783	74.6
Sawgrass Expressway	75,178,977	10,453,785	85,632,762	87.8
Seminole Expressway	32,433,508	7,158,949	39,592,457	81.9
Veterans Expressway	46,046,730	9,256,925	55,303,655	83.3
Southern Connector Extension	10,669,485	2,933,085	13,602,570	78.4
Polk Parkway	25,317,506	7,998,261	33,315,767	76.0
Suncoast Parkway	25,205,702	6,143,478	31,349,180	80.4
Western Beltway, Part C	7,874,543	2,852,159	10,726,702	73.4
I-4 Connector	12,354,253	3,929,099	16,283,352	75.9
Beachline East Expressway	12,232,743	6,489,806	18,722,549	65.3
Total	679,317,811	154,529,013	833,846,824	81.5%

Source: Turnpike Enterprise Finance Office.

Florida's Turnpike System
Quarterly SunPass Toll Revenue (\$000)
FY 2016 vs. FY 2015

Months	FY 2016	FY 2015	Variance	
			Amount	Change
July	\$62,280,115	\$54,915,528	\$7,364,587	13.4%
August	61,630,053	55,619,515	6,010,538	10.8
September	60,093,313	52,994,236	7,099,077	13.4
1st Quarter Subtotal	184,003,481	163,529,279	20,474,202	12.5
October	65,132,392	58,536,730	6,595,662	11.3
November	62,883,871	55,315,414	7,568,457	13.7
December	65,647,286	58,827,053	6,820,233	11.6
2nd Quarter Subtotal	193,663,549	172,679,197	20,984,352	12.2
January	62,980,493	58,035,473	4,945,020	8.5
February	63,138,746	55,441,357	7,697,389	13.9
March	70,160,736	63,938,357	6,222,379	9.7
3rd Quarter Subtotal	196,279,975	177,415,187	18,864,788	10.6
April	66,412,039	61,126,324	5,285,715	8.6
May	67,007,445	61,871,039	5,136,406	8.3
June	64,716,440	59,816,290	4,900,150	8.2
4th Quarter Subtotal	198,135,924	182,813,653	15,322,271	8.4
Annual Total	\$772,082,929	\$696,437,316	\$75,645,613	10.9%

Source: Turnpike Enterprise Finance Office.

SR 821 (HEFT)
SunPass Transactions and Participation
FY 2016

Month	Number of Transactions			SunPass Participation
	SunPass	Non-SunPass	Total	
July, 2015	14,075,107	2,395,454	16,470,561	85.5%
August	14,048,388	2,312,120	16,360,508	85.9
September	13,983,056	2,284,988	16,268,044	86.0
October	14,783,916	2,501,387	17,285,303	85.5
November	13,958,046	2,456,437	16,414,483	85.0
December	14,352,889	2,653,892	17,006,781	84.4
January, 2016	14,002,252	2,535,885	16,538,137	84.7
February	13,982,228	2,502,248	16,484,476	84.8
March	15,136,369	2,735,808	17,872,177	84.7
April	14,557,607	2,612,471	17,170,078	84.8
May	14,459,448	2,647,887	17,107,335	84.5
June	14,030,857	2,591,219	16,622,076	84.4
Total	171,370,163	30,229,796	201,599,959	85.0%

Source: Turnpike Enterprise Finance Office.

SR 821 (HEFT)
Quarterly SunPass Revenue Results
FY 2016 vs. FY 2015

Months	FY 2016	FY 2015	Variance	
			Amount	Change
July	\$13,148,263	\$11,936,988	\$1,211,275	10.1%
August	13,053,401	12,291,646	761,755	6.2
September	12,904,648	11,954,404	950,244	7.9
1st Quarter Subtotal	39,106,312	36,183,038	2,923,274	8.1
October	13,635,413	12,726,139	909,274	7.1
November	12,911,225	11,858,118	1,053,107	8.9
December	13,237,089	12,363,424	873,665	7.1
2nd Quarter Subtotal	39,783,727	36,947,681	2,836,046	7.7
January	12,907,682	12,458,380	449,302	3.6
February	12,927,451	11,858,772	1,068,679	9.0
March	14,065,342	13,368,981	696,361	5.2
3rd Quarter Subtotal	39,900,475	37,686,133	2,214,342	5.9
April	13,508,450	13,024,306	484,144	3.7
May	13,423,086	12,921,698	501,388	3.9
June	13,084,135	12,585,808	498,327	4.0
4th Quarter Subtotal	40,015,671	38,531,812	1,483,859	3.9
Annual Total	\$158,806,185	\$149,348,664	\$9,457,521	6.3%

Source: Turnpike Enterprise Finance Office.

**Southern Coin System
SunPass Transactions and Participation
FY 2016**

Month	Number of Transactions			SunPass Participation
	SunPass	Non-SunPass	Total	
July, 2015	10,574,153	2,402,122	12,976,275	81.5%
August	10,465,746	2,311,583	12,777,329	81.9
September	10,483,401	2,148,615	12,632,016	83.0
October	11,216,795	2,330,128	13,546,923	82.8
November	10,665,963	2,293,190	12,959,153	82.3
December	11,147,110	2,531,022	13,678,132	81.5
January, 2016	10,970,409	2,428,785	13,399,194	81.9
February	11,053,540	2,425,596	13,479,136	82.0
March	12,003,466	2,664,336	14,667,802	81.8
April	11,415,067	2,457,118	13,872,185	82.3
May	11,375,958	2,468,481	13,844,439	82.2
June	10,979,295	2,419,732	13,399,027	81.9
Total	132,350,903	28,880,708	161,231,611	82.1%

Source: Turnpike Enterprise Finance Office.

Southern Coin System
Quarterly SunPass Revenue Results
FY 2016 vs. FY 2015

Months	FY 2016	FY 2015	Variance	
			Amount	Change
July	\$9,905,379	\$8,519,754	\$1,385,625	16.3%
August	9,807,300	8,552,270	1,255,030	14.7
September	9,732,820	8,216,300	1,516,520	18.5
1st Quarter Subtotal	29,445,499	25,288,324	4,157,175	16.4
October	10,436,531	9,182,181	1,254,350	13.7
November	9,953,243	8,688,665	1,264,578	14.6
December	10,398,644	9,371,619	1,027,025	11.0
2nd Quarter Subtotal	30,788,418	27,242,465	3,545,953	13.0
January	10,196,005	9,403,082	792,923	8.4
February	10,257,393	9,007,587	1,249,806	13.9
March	11,177,160	10,183,041	994,119	9.8
3rd Quarter Subtotal	31,630,558	28,593,710	3,036,848	10.6
April	10,622,434	9,796,123	826,311	8.4
May	10,585,529	9,706,046	879,483	9.1
June	10,260,513	9,476,044	784,469	8.3
4th Quarter Subtotal	31,468,476	28,978,213	2,490,263	8.6
Lantana Adjustment *	19,178,133	17,535,405	1,642,728	9.4
Annual Total	\$142,511,084	\$127,638,117	\$14,872,967	11.7%

Source: Turnpike Enterprise Finance Office.

* Amount based on actual two-way revenue traffic at the plaza multiplied by an average adjustment rate.

Ticket System
SunPass Transactions and Participation
FY 2016

Month	Number of Transactions			SunPass Participation
	SunPass	Non-SunPass	Total	
July, 2015	3,582,693	803,874	4,386,567	81.7%
August	3,554,436	744,260	4,298,696	82.7
September	3,472,617	653,171	4,125,788	84.2
October	3,781,286	727,920	4,509,206	83.9
November	3,694,218	762,997	4,457,215	82.9
December	3,856,480	866,274	4,722,754	81.7
January, 2016	3,782,224	817,336	4,599,560	82.2
February	3,761,074	792,013	4,553,087	82.6
March	4,163,646	938,529	5,102,175	81.6
April	3,881,871	782,720	4,664,591	83.2
May	3,912,129	762,094	4,674,223	83.7
June	3,729,650	737,913	4,467,563	83.5
Total	45,172,324	9,389,101	54,561,425	82.8%

Source: Turnpike Enterprise Finance Office.

Ticket System
Quarterly SunPass Revenue Results
FY 2016 vs. FY 2015

Months	FY 2016	FY 2015	Variance	
			Amount	Change
July	\$12,723,864	\$11,455,059	\$1,268,805	11.1%
August	12,328,765	11,622,768	705,997	6.1
September	11,550,823	10,333,792	1,217,031	11.8
1st Quarter Subtotal	36,603,452	33,411,619	3,191,833	9.6
October	12,946,733	11,872,482	1,074,251	9.0
November	13,119,555	11,858,141	1,261,414	10.6
December	13,506,425	12,459,645	1,046,780	8.4
2nd Quarter Subtotal	39,572,713	36,190,268	3,382,445	9.3
January	12,642,861	11,835,440	807,421	6.8
February	12,241,947	11,054,316	1,187,631	10.7
March	14,246,246	13,322,122	924,124	6.9
3rd Quarter Subtotal	39,131,054	36,211,878	2,919,176	8.1
April	13,126,407	12,066,988	1,059,419	8.8
May	13,624,378	12,822,431	801,947	6.3
June	12,790,793	12,095,435	695,358	5.7
4th Quarter Subtotal	39,541,578	36,984,854	2,556,724	6.9
Lantana Adjustment*	(19,178,133)	(17,535,405)	(1,642,728)	9.4
Three Lakes Adjustment**	(10,897,165)	(9,983,394)	(913,771)	9.2
Total Adjustments	(30,075,298)	(27,518,799)	(2,556,499)	9.3
Annual Total	\$124,773,499	\$115,279,820	\$9,493,679	8.2%

Source: Turnpike Enterprise Finance Office.

* Allocated to Southern Coin System, amount based on actual two-way revenue traffic at the plaza multiplied by an average adjustment rate.

** Allocated to Northern Coin System, amount based on actual two-way revenue traffic at the plaza multiplied by an average adjustment rate.

**Northern Coin System
SunPass Transactions and Participation
FY 2016**

Month	Number of Transactions			SunPass Participation
	SunPass	Non-SunPass	Total	
July, 2015	4,751,990	1,873,925	6,625,915	71.7%
August	4,710,567	1,629,865	6,340,432	74.3
September	4,636,663	1,489,865	6,126,528	75.7
October	5,021,787	1,671,212	6,692,999	75.0
November	4,839,984	1,674,601	6,514,585	74.3
December	5,112,348	1,845,125	6,957,473	73.5
January, 2016	4,822,323	1,662,907	6,485,230	74.4
February	4,878,120	1,673,128	6,551,248	74.5
March	5,446,310	2,017,260	7,463,570	73.0
April	5,178,242	1,805,155	6,983,397	74.2
May	5,317,380	1,745,916	7,063,296	75.3
June	5,252,147	1,827,232	7,079,379	74.2
Total	59,967,861	20,916,191	80,884,052	74.1%

Source: Turnpike Enterprise Finance Office.

Northern Coin System
Quarterly SunPass Revenue Results
FY 2016 vs. FY 2015

Months	FY 2016	FY 2015	Variance	
			Amount	Change
July	\$6,799,496	\$5,851,167	\$948,329	16.2%
August	6,721,961	5,735,375	986,586	17.2
September	6,587,574	5,533,074	1,054,500	19.1
1st Quarter Subtotal	20,109,031	17,119,616	2,989,415	17.5
October	7,192,431	6,160,249	1,032,182	16.8
November	7,062,491	5,840,844	1,221,647	20.9
December	7,301,103	6,150,298	1,150,805	18.7
2nd Quarter Subtotal	21,556,025	18,151,391	3,404,634	18.8
January	6,862,367	5,986,017	876,350	14.6
February	6,947,505	5,746,472	1,201,033	20.9
March	7,895,382	6,804,687	1,090,695	16.0
3rd Quarter Subtotal	21,705,254	18,537,176	3,168,078	17.1
April	7,462,633	6,534,256	928,377	14.2
May	7,607,547	6,664,878	942,669	14.1
June	7,533,577	6,534,966	998,611	15.3
4th Quarter Subtotal	22,603,757	19,734,100	2,869,657	14.5
Three Lakes Adjustment *	10,897,165	9,983,394	913,771	9.2
Annual Total	\$96,871,232	\$83,525,677	\$13,345,555	16.0%

Source: Turnpike Enterprise Finance Office.

* Amount based on actual two-way revenue traffic at the plaza multiplied by an average adjustment rate.

**Beachline West Expressway
SunPass Transactions and Participation
FY 2016**

Month	Number of Transactions			SunPass Participation
	SunPass	Non-SunPass	Total	
July, 2015	1,861,566	705,000	2,566,566	72.5%
August	1,784,608	646,232	2,430,840	73.4
September	1,764,511	565,783	2,330,294	75.7
October	1,938,973	640,575	2,579,548	75.2
November	1,859,044	633,223	2,492,267	74.6
December	1,957,005	692,956	2,649,961	73.9
January, 2016	1,924,383	673,908	2,598,291	74.1
February	1,922,020	646,156	2,568,176	74.8
March	2,124,719	740,950	2,865,669	74.1
April	1,983,905	661,279	2,645,184	75.0
May	2,069,979	651,215	2,721,194	76.1
June	1,952,400	640,393	2,592,793	75.3
Total	23,143,113	7,897,670	31,040,783	74.6%

Source: Turnpike Enterprise Finance Office.

Beachline West Expressway
Quarterly SunPass Revenue Results
FY 2016 vs. FY 2015

Months	FY 2016	FY 2015	Variance	
			Amount	Change
July	\$1,580,354	\$1,343,189	\$237,165	17.7%
August	1,515,503	1,329,766	185,737	14.0
September	1,501,792	1,293,600	208,192	16.1
1st Quarter Subtotal	4,597,649	3,966,555	631,094	15.9
October	1,645,807	1,465,312	180,495	12.3
November	1,571,823	1,340,124	231,699	17.3
December	1,654,106	1,425,432	228,674	16.0
2nd Quarter Subtotal	4,871,736	4,230,868	640,868	15.1
January	1,623,627	1,446,379	177,248	12.3
February	1,665,287	1,397,174	268,113	19.2
March	1,780,715	1,626,375	154,340	9.5
3rd Quarter Subtotal	5,069,629	4,469,928	599,701	13.4
April	1,661,916	1,543,436	118,480	7.7
May	1,664,882	1,569,026	95,856	6.1
June	1,563,044	1,531,188	31,856	2.1
4th Quarter Subtotal	4,889,842	4,643,650	246,192	5.3
Annual Total	\$19,428,856	\$17,311,001	\$2,117,855	12.2%

Source: Turnpike Enterprise Finance Office.

**Sawgrass Expressway
SunPass Transactions and Participation
FY 2016**

Month	Number of Transactions			SunPass Participation
	SunPass	Non-SunPass	Total	
July, 2015	5,917,406	805,179	6,722,585	88.0%
August	5,972,260	806,681	6,778,941	88.1
September	5,869,885	750,126	6,620,011	88.7
October	6,326,859	839,381	7,166,240	88.3
November	6,044,370	837,691	6,882,061	87.8
December	6,405,269	928,371	7,333,640	87.3
January, 2016	6,291,166	910,933	7,202,099	87.4
February	6,350,318	918,209	7,268,527	87.4
March	6,805,230	970,171	7,775,401	87.5
April	6,489,772	903,413	7,393,185	87.8
May	6,486,281	905,269	7,391,550	87.8
June	6,220,161	878,361	7,098,522	87.6
Total	75,178,977	10,453,785	85,632,762	87.8%

Source: Turnpike Enterprise Finance Office.

Sawgrass Expressway
Quarterly SunPass Revenue Results
FY 2016 vs. FY 2015

Months	FY 2016	FY 2015	Variance	
			Amount	Change
July	5,829,114	5,340,665	\$488,449	9.1%
August	5,862,451	5,477,751	384,700	7.0
September	5,685,584	5,304,227	381,357	7.2
1st Quarter Subtotal	17,377,149	16,122,643	1,254,506	7.8
October	6,167,310	5,734,672	432,638	7.5
November	5,899,839	5,345,248	554,591	10.4
December	6,247,845	5,764,340	483,505	8.4
2nd Quarter Subtotal	18,314,994	16,844,260	1,470,734	8.7
January	6,133,076	5,712,069	421,007	7.4
February	6,203,061	5,495,718	707,343	12.9
March	6,677,469	6,086,231	591,238	9.7
3rd Quarter Subtotal	19,013,606	17,294,018	1,719,588	9.9
April	6,367,968	5,887,716	480,252	8.2
May	6,369,038	5,924,077	444,961	7.5
June	6,127,437	5,675,195	452,242	8.0
4th Quarter Subtotal	18,864,443	17,486,988	1,377,455	7.9
Annual Total	\$73,570,192	\$67,747,909	\$5,822,283	8.6%

Source: Turnpike Enterprise Finance Office.

**Seminole Expressway
SunPass Transactions and Participation
FY 2016**

Month	Number of Transactions			SunPass Participation
	SunPass	Non-SunPass	Total	
July, 2015	2,575,582	585,083	3,160,665	81.5%
August	2,582,939	573,766	3,156,705	81.8
September	2,563,776	536,097	3,099,873	82.7
October	2,782,302	589,713	3,372,015	82.5
November	2,573,905	563,329	3,137,234	82.0
December	2,728,055	618,259	3,346,314	81.5
January, 2016	2,587,971	581,471	3,169,442	81.7
February	2,672,915	596,653	3,269,568	81.8
March	2,941,616	683,444	3,625,060	81.1
April	2,814,640	608,352	3,422,992	82.2
May	2,857,777	620,101	3,477,878	82.2
June	2,752,030	602,681	3,354,711	82.0
Total	32,433,508	7,158,949	39,592,457	81.9%

Source: Turnpike Enterprise Finance Office.

**Seminole Expressway
Quarterly SunPass Revenue Results
FY 2016 vs. FY 2015**

Months	FY 2016	FY 2015	Variance	
			Amount	Change
July	\$3,373,946	\$2,841,041	\$532,905	18.8%
August	3,355,935	2,877,545	478,390	16.6
September	3,321,107	2,824,963	496,144	17.6
1st Quarter Subtotal	10,050,988	8,543,549	1,507,439	17.6
October	3,611,597	3,106,561	505,036	16.3
November	3,320,696	2,782,827	537,869	19.3
December	3,524,455	2,957,184	567,271	19.2
2nd Quarter Subtotal	10,456,748	8,846,572	1,610,176	18.2
January	3,375,233	2,996,130	379,103	12.7
February	3,510,794	2,946,511	564,283	19.2
March	3,891,548	3,362,278	529,270	15.7
3rd Quarter Subtotal	10,777,575	9,304,919	1,472,656	15.8
April	3,696,606	3,314,407	382,199	11.5
May	3,748,831	3,301,929	446,902	13.5
June	3,632,447	3,242,825	389,622	12.0
4th Quarter Subtotal	11,077,884	9,859,161	1,218,723	12.4
Annual Total	\$42,363,195	\$36,554,201	\$5,808,994	15.9%

Source: Turnpike Enterprise Finance Office.

**Veterans Expressway
SunPass Transactions and Participation
FY 2016**

Month	Number of Transactions			SunPass Participation
	SunPass	Non-SunPass	Total	
July, 2015	3,613,241	719,555	4,332,796	83.4%
August	3,762,904	726,592	4,489,496	83.8
September	3,689,998	708,684	4,398,682	83.9
October	3,941,697	766,030	4,707,727	83.7
November	3,679,197	754,172	4,433,369	83.0
December	4,024,879	819,985	4,844,864	83.1
January, 2016	3,752,936	747,734	4,500,670	83.4
February	3,745,941	760,074	4,506,015	83.1
March	4,067,056	841,616	4,908,672	82.9
April	3,951,743	799,498	4,751,241	83.2
May	3,958,462	819,417	4,777,879	82.8
June	3,858,676	793,568	4,652,244	82.9
Total	46,046,730	9,256,925	55,303,655	83.3%

Source: Turnpike Enterprise Finance Office.

**Veterans Expressway
Quarterly SunPass Revenue Results
FY 2016 vs. FY 2015**

Months	FY 2016	FY 2015	Variance	
			Amount	Change
July	\$3,092,451	\$2,857,299	\$235,152	8.2%
August	3,163,297	2,904,636	258,661	8.9
September	3,133,675	2,834,566	299,109	10.6
1st Quarter Subtotal	9,389,423	8,596,501	792,922	9.2
October	3,354,349	3,083,953	270,396	8.8
November	3,146,632	2,790,553	356,079	12.8
December	3,429,672	3,081,322	348,350	11.3
2nd Quarter Subtotal	9,930,653	8,955,828	974,825	10.9
January	3,199,546	2,986,102	213,444	7.1
February	3,203,400	2,852,707	350,693	12.3
March	3,495,457	3,226,427	269,030	8.3
3rd Quarter Subtotal	9,898,403	9,065,236	833,167	9.2
April	3,399,871	3,184,863	215,008	6.8
May	3,398,644	3,206,050	192,594	6.0
June	3,319,241	3,112,852	206,389	6.6
4th Quarter Subtotal	10,117,756	9,503,765	613,991	6.5
Annual Total	\$39,336,235	\$36,121,330	\$3,214,905	8.9%

Source: Turnpike Enterprise Finance Office.

**Southern Connector Extension
SunPass Transactions and Participation
FY 2016**

Month	Number of Transactions			SunPass Participation
	SunPass	Non-SunPass	Total	
July, 2015	850,364	265,094	1,115,458	76.2%
August	814,029	228,866	1,042,895	78.1
September	746,209	177,665	923,874	80.8
October	842,099	211,105	1,053,204	80.0
November	822,971	214,247	1,037,218	79.3
December	938,555	269,322	1,207,877	77.7
January, 2016	878,682	237,529	1,116,211	78.7
February	883,355	246,384	1,129,739	78.2
March	1,046,250	324,812	1,371,062	76.3
April	959,980	265,172	1,225,152	78.4
May	954,877	235,900	1,190,777	80.2
June	932,114	256,989	1,189,103	78.4
Total	10,669,485	2,933,085	13,602,570	78.4%

Source: Turnpike Enterprise Finance Office.

Southern Connector Extension
Quarterly SunPass Revenue Results
FY 2016 vs. FY 2015

Months	FY 2016	FY 2015	Variance	
			Amount	Change
July	\$672,317	\$530,509	\$141,808	26.7%
August	649,194	517,334	131,860	25.5
September	596,088	469,174	126,914	27.1
1st Quarter Subtotal	1,917,599	1,517,017	400,582	26.4
October	669,621	521,876	147,745	28.3
November	653,783	490,037	163,746	33.4
December	742,085	562,264	179,821	32.0
2nd Quarter Subtotal	2,065,489	1,574,177	491,312	31.2
January	696,920	547,625	149,295	27.3
February	705,178	547,368	157,810	28.8
March	835,585	652,782	182,803	28.0
3rd Quarter Subtotal	2,237,683	1,747,775	489,908	28.0
April	766,150	628,356	137,794	21.9
May	761,902	618,110	143,792	23.3
June	749,834	610,497	139,337	22.8
4th Quarter Subtotal	2,277,886	1,856,963	420,923	22.7
Annual Total	\$8,498,657	\$6,695,932	\$1,802,725	26.9%

Source: Turnpike Enterprise Finance Office.

**Polk Parkway
SunPass Transactions and Participation
FY 2016**

Month	Number of Transactions			SunPass Participation
	SunPass	Non-SunPass	Total	
July, 2015	1,933,227	629,286	2,562,513	75.4%
August	1,974,845	622,418	2,597,263	76.0
September	1,974,081	599,217	2,573,298	76.7
October	2,127,246	657,351	2,784,597	76.4
November	2,002,404	640,858	2,643,262	75.8
December	2,158,896	705,064	2,863,960	75.4
January, 2016	2,067,866	633,345	2,701,211	76.6
February	2,128,409	695,104	2,823,513	75.4
March	2,335,938	781,905	3,117,843	74.9
April	2,237,253	701,311	2,938,564	76.1
May	2,225,383	678,995	2,904,378	76.6
June	2,151,958	653,407	2,805,365	76.7
Total	25,317,506	7,998,261	33,315,767	76.0%

Source: Turnpike Enterprise Finance Office.

Polk Parkway
Quarterly SunPass Revenue Results
FY 2016 vs. FY 2015

Months	FY 2016	FY 2015	Variance	
			Amount	Change
July	\$1,792,400	\$1,511,519	\$280,881	18.6%
August	1,824,625	1,572,416	252,209	16.0
September	1,825,670	1,555,439	270,231	17.4
1st Quarter Subtotal	5,442,695	4,639,374	803,321	17.3
October	1,970,812	1,728,239	242,573	14.0
November	1,867,169	1,563,509	303,660	19.4
December	2,004,952	1,707,548	297,404	17.4
2nd Quarter Subtotal	5,842,933	4,999,296	843,637	16.9
January	1,915,104	1,680,808	234,296	13.9
February	1,981,282	1,659,446	321,836	19.4
March	2,179,389	1,888,296	291,093	15.4
3rd Quarter Subtotal	6,075,775	5,228,550	847,225	16.2
April	2,084,114	1,829,569	254,545	13.9
May	2,077,322	1,819,378	257,944	14.2
June	2,017,515	1,773,993	243,522	13.7
4th Quarter Subtotal	6,178,951	5,422,940	756,011	13.9
Annual Total	\$23,540,354	\$20,290,160	\$3,250,194	16.0%

Source: Turnpike Enterprise Finance Office.

**Suncoast Parkway
SunPass Transactions and Participation
FY 2016**

Month	Number of Transactions			SunPass Participation
	SunPass	Non-SunPass	Total	
July, 2015	2,004,462	475,603	2,480,065	80.8%
August	2,035,028	458,918	2,493,946	81.6
September	1,994,649	447,026	2,441,675	81.7
October	2,130,406	497,965	2,628,371	81.1
November	2,047,790	514,059	2,561,849	79.9
December	2,184,437	549,629	2,734,066	79.9
January, 2016	2,033,239	516,399	2,549,638	79.7
February	2,059,811	512,565	2,572,376	80.1
March	2,271,618	593,657	2,865,275	79.3
April	2,178,092	543,427	2,721,519	80.0
May	2,185,226	532,609	2,717,835	80.4
June	2,080,944	501,621	2,582,565	80.6
Total	25,205,702	6,143,478	31,349,180	80.4%

Source: Turnpike Enterprise Finance Office.

Suncoast Parkway
Quarterly SunPass Revenue Results
FY 2016 vs. FY 2015

Months	FY 2016	FY 2015	Variance	
			Amount	Change
July	\$1,698,989	\$1,513,867	\$185,122	12.2%
August	1,689,935	1,520,755	169,180	11.1
September	1,650,178	1,494,132	156,046	10.4
1st Quarter Subtotal	5,039,102	4,528,754	510,348	11.3
October	1,757,299	1,628,399	128,900	7.9
November	1,727,390	1,530,958	196,432	12.8
December	1,811,087	1,620,996	190,091	11.7
2nd Quarter Subtotal	5,295,776	4,780,353	515,423	10.8
January	1,683,907	1,597,503	86,404	5.4
February	1,703,281	1,500,304	202,977	13.5
March	1,884,520	1,772,605	111,915	6.3
3rd Quarter Subtotal	5,271,708	4,870,412	401,296	8.2
April	1,810,586	1,723,654	86,932	5.0
May	1,828,789	1,698,128	130,661	7.7
June	1,751,992	1,605,407	146,585	9.1
4th Quarter Subtotal	5,391,367	5,027,189	364,178	7.2
Annual Total	\$20,997,953	\$19,206,708	\$1,791,245	9.3%

Source: Turnpike Enterprise Finance Office.

Western Beltway, Part C
SunPass Transactions and Participation
FY 2016

Month	Number of Transactions			SunPass Participation
	SunPass	Non-SunPass	Total	
July, 2015	628,560	289,410	917,970	68.5%
August	601,846	228,995	830,841	72.4
September	556,154	170,663	726,817	76.5
October	618,819	207,221	826,040	74.9
November	596,951	207,873	804,824	74.2
December	672,488	249,328	921,816	73.0
January, 2016	647,023	219,112	866,135	74.7
February	661,902	227,216	889,118	74.4
March	776,615	309,187	1,085,802	71.5
April	713,208	253,838	967,046	73.8
May	704,428	226,208	930,636	75.7
June	696,549	263,108	959,657	72.6
Total	7,874,543	2,852,159	10,726,702	73.4%

Source: Turnpike Enterprise Finance Office.

Western Beltway, Part C
Quarterly SunPass Revenue Results
FY 2016 vs. FY 2015

Months	FY 2016	FY 2015	Variance	
			Amount	Change
July	\$654,621	\$492,555	\$162,066	32.9%
August	627,585	482,628	144,957	30.0
September	588,744	451,971	136,773	30.3
1st Quarter Subtotal	1,870,950	1,427,154	443,796	31.1
October	650,339	508,794	141,545	27.8
November	624,186	469,553	154,633	32.9
December	696,494	529,652	166,842	31.5
2nd Quarter Subtotal	1,971,019	1,507,999	463,020	30.7
January	668,789	533,285	135,504	25.4
February	690,901	532,130	158,771	29.8
March	814,931	639,907	175,024	27.4
3rd Quarter Subtotal	2,174,621	1,705,322	469,299	27.5
April	756,874	622,343	134,531	21.6
May	744,266	606,877	137,389	22.6
June	741,021	592,805	148,216	25.0
4th Quarter Subtotal	2,242,161	1,822,025	420,136	23.1
Annual Total	\$8,258,751	\$6,462,500	\$1,796,251	27.8%

Source: Turnpike Enterprise Finance Office.

**I-4 Connector
SunPass Transactions and Participation
FY 2016**

Month	Number of Transactions			SunPass Participation
	SunPass	Non-SunPass	Total	
July, 2015	921,629	298,413	1,220,042	75.5%
August	954,540	305,084	1,259,624	75.8
September	946,610	298,764	1,245,374	76.0
October	1,026,298	328,621	1,354,919	75.7
November	966,837	307,895	1,274,732	75.8
December	1,041,159	337,091	1,378,250	75.5
January, 2016	1,028,117	324,485	1,352,602	76.0
February	1,048,697	330,409	1,379,106	76.0
March	1,136,273	364,743	1,501,016	75.7
April	1,091,489	340,519	1,432,008	76.2
May	1,100,272	346,624	1,446,896	76.0
June	1,092,332	346,451	1,438,783	75.9
Total	12,354,253	3,929,099	16,283,352	75.9%

Source: Turnpike Enterprise Finance Office.

I-4 Connector
Quarterly SunPass Revenue Results
FY 2016 vs. FY 2015

Months	FY 2016	FY 2015	Variance	
			Amount	Change
July	\$726,221	\$463,740	\$262,481	56.6%
August	751,105	481,005	270,100	56.2
September	751,640	500,994	250,646	50.0
1st Quarter Subtotal	2,228,966	1,445,739	783,227	54.2
October	810,965	565,918	245,047	43.3
November	747,870	520,328	227,542	43.7
December	798,993	573,888	225,105	39.2
2nd Quarter Subtotal	2,357,828	1,660,134	697,694	42.0
January	800,693	602,591	198,102	32.9
February	822,275	602,940	219,335	36.4
March	887,693	706,288	181,405	25.7
3rd Quarter Subtotal	2,510,661	1,911,819	598,842	31.3
April	844,003	691,446	152,557	22.1
May	852,438	720,173	132,265	18.4
June	841,808	704,763	137,045	19.4
4th Quarter Subtotal	2,538,249	2,116,382	421,867	19.9
Annual Total	\$9,635,704	\$7,134,074	\$2,501,630	35.1%

Source: Turnpike Enterprise Finance Office.

**Beachline East Expressway
SunPass Transactions and Participation
FY 2016**

Month	Number of Transactions			SunPass Participation
	SunPass	Non-SunPass	Total	
July, 2015	1,005,091	573,060	1,578,151	63.7%
August	970,750	517,546	1,488,296	65.2
September	937,966	446,014	1,383,980	67.8
October	995,946	487,782	1,483,728	67.1
November	983,720	486,254	1,469,974	66.9
December	1,025,565	547,636	1,573,201	65.2
January, 2016	956,338	504,521	1,460,859	65.5
February	969,042	536,528	1,505,570	64.4
March	1,140,827	678,873	1,819,700	62.7
April	1,060,576	581,336	1,641,912	64.6
May	1,129,929	570,884	1,700,813	66.4
June	1,056,993	559,372	1,616,365	65.4
Total	12,232,743	6,489,806	18,722,549	65.3%

Source: Turnpike Enterprise Finance Office.

**Beachline East Expressway
Quarterly SunPass Revenue Results
FY 2016 vs. FY 2015**

Months	FY 2016	FY 2015	Variance	
			Amount	Change
July	\$282,700	\$258,176	\$24,524	9.5%
August	278,998	253,622	25,376	10.0
September	269,970	227,599	42,371	18.6
1st Quarter Subtotal	831,668	739,397	92,271	12.5
October	283,185	251,954	31,231	12.4
November	277,969	236,509	41,460	17.5
December	294,337	259,441	34,896	13.5
2nd Quarter Subtotal	855,491	747,904	107,587	14.4
January	274,680	250,063	24,617	9.8
February	278,990	239,911	39,079	16.3
March	329,297	298,335	30,962	10.4
3rd Quarter Subtotal	882,967	788,309	94,658	12.0
April	304,027	278,861	25,166	9.0
May	320,794	292,239	28,555	9.8
June	303,085	274,513	28,572	10.4
4th Quarter Subtotal	927,906	845,613	82,293	9.7
Annual Total	\$3,498,032	\$3,121,223	\$376,809	12.1%

Source: Turnpike Enterprise Finance Office.

**Mainline Seasonal Variation
SunPass Traffic
FY 2016**

Month	Seasonal Factor				
	SR 821 (HEFT)	Southern Coin System	Ticket System	Northern Coin System	Beachline West Expressway
July, 2015	0.97	0.94	0.94	0.94	0.95
August	0.97	0.93	0.93	0.93	0.91
September	1.00	0.97	0.94	0.94	0.93
October	1.02	1.00	0.99	0.99	0.99
November	0.99	0.98	1.00	0.98	0.98
December	0.99	0.99	1.01	1.01	1.00
January, 2016	0.96	0.98	0.99	0.95	0.98
February	1.03	1.05	1.05	1.03	1.05
March	1.04	1.07	1.09	1.07	1.08
April	1.04	1.05	1.05	1.05	1.05
May	1.00	1.01	1.02	1.05	1.06
June	1.00	1.01	1.01	1.07	1.03

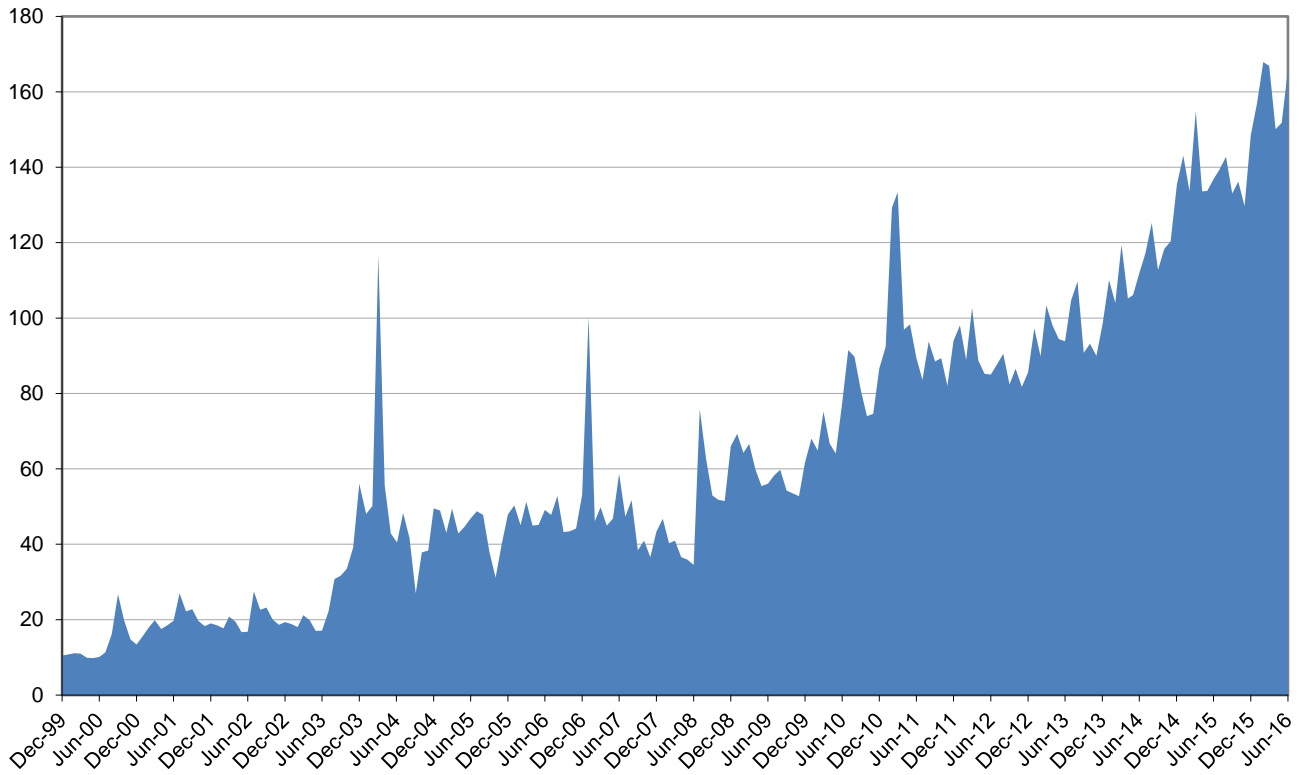
Source: Turnpike Enterprise Finance Office.

**Expansion Projects Seasonal Variation
SunPass Traffic
FY 2016**

Month	Seasonal Factor								
	Sawgrass Expressway	Seminole Expressway	Veterans Expressway	Southern Conn. Ext.	Polk Parkway	Suncoast Parkway	Western Beltway, Part C	I-4 Connector	Beachline East Expressway
July, 2015	0.93	0.94	0.93	0.94	0.90	0.94	0.94	0.88	0.97
August	0.94	0.94	0.96	0.90	0.92	0.95	0.90	0.91	0.94
September	0.95	0.96	0.98	0.85	0.95	0.97	0.86	0.93	0.94
October	0.99	1.01	1.01	0.93	0.99	1.00	0.93	0.98	0.96
November	0.98	0.97	0.97	0.94	0.96	0.99	0.92	0.95	0.98
December	1.01	0.99	1.03	1.04	1.01	1.02	1.01	0.99	0.99
January, 2016	0.99	0.94	0.96	0.97	0.96	0.95	0.97	0.98	0.92
February	1.07	1.04	1.03	1.04	1.06	1.03	1.06	1.07	1.00
March	1.07	1.07	1.04	1.16	1.09	1.06	1.16	1.09	1.10
April	1.05	1.06	1.05	1.10	1.08	1.05	1.10	1.08	1.06
May	1.02	1.04	1.01	1.06	1.04	1.02	1.06	1.05	1.09
June	1.01	1.04	1.02	1.07	1.04	1.01	1.08	1.08	1.05

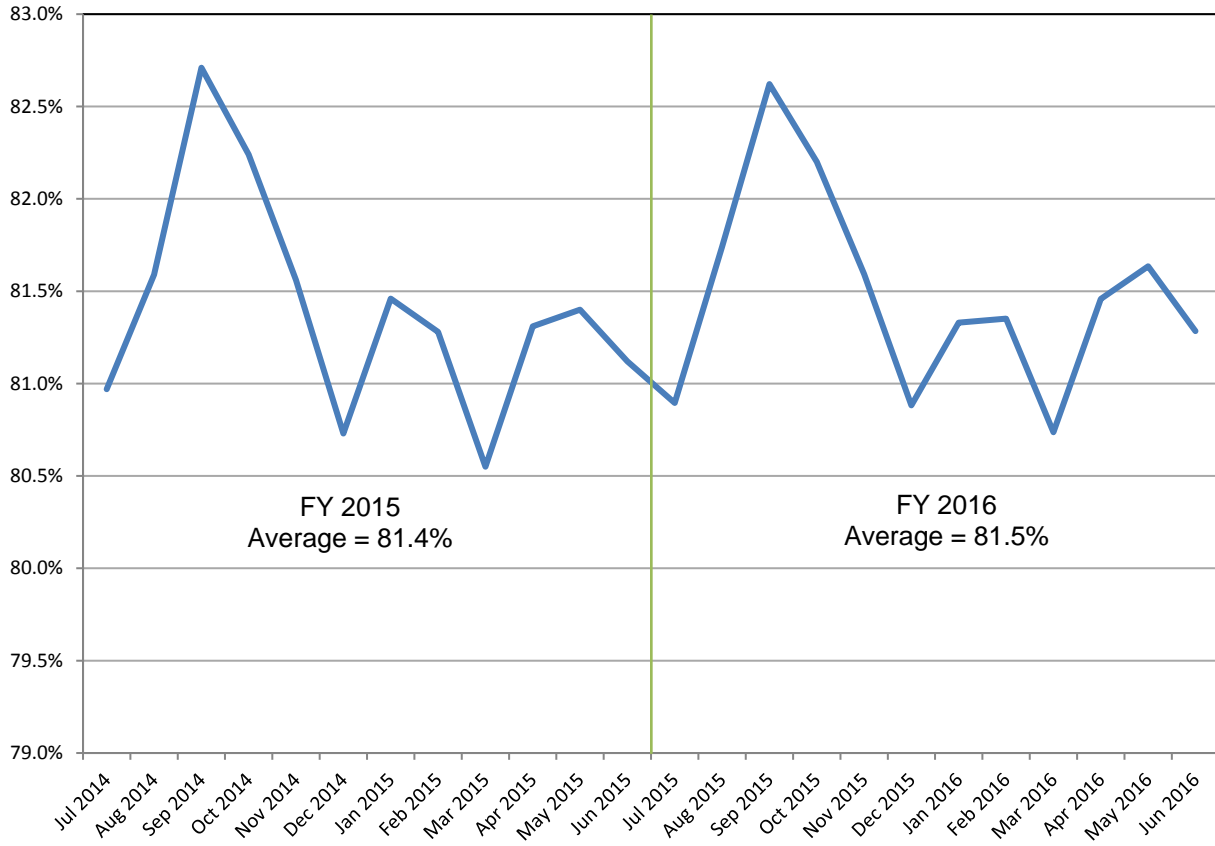
Source: Turnpike Enterprise Finance Office.

Monthly SunPass Transponder Sales Inception to June 2016

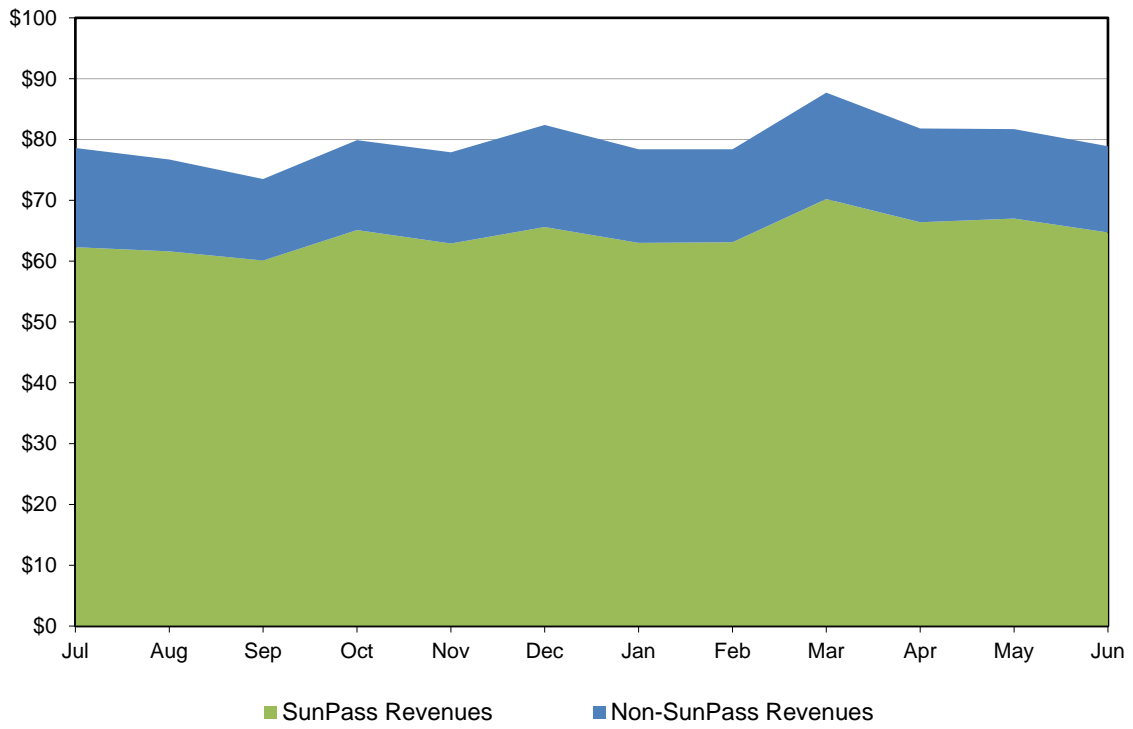


This graph shows the monthly SunPass transponder sales since inception. The significant increase in transponder sales during March 2004 is attributed to the cash toll rate increase implemented on the Turnpike system. A similar spike in sales in January 2007 is due to a one-day, half-off promotion in celebration of Turnpike's 50th anniversary. The successful launch of the Mini Tags in July 2008 boosted the total sales to nearly 76 thousand that month. Also, life cycle replacements of older transponders and the implementation of All-Electronic Tolling (AET) on SR 821 (HEFT) in February 2011 significantly boosted transponder sales, as well as the June 2012 toll rate increase and subsequent AET conversion on the Sawgrass and Veterans Expressways.

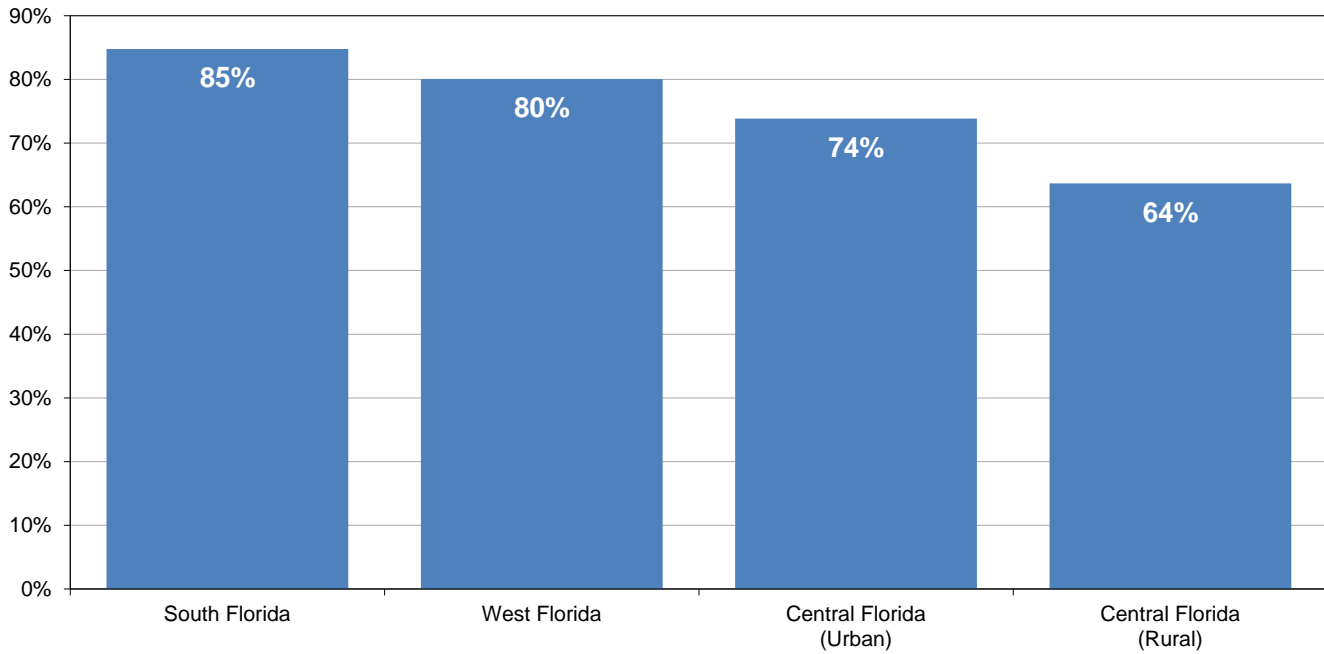
SunPass Participation by Month FY 2015 and FY 2016



Toll Revenue by Payment Type (In Millions) FY 2016

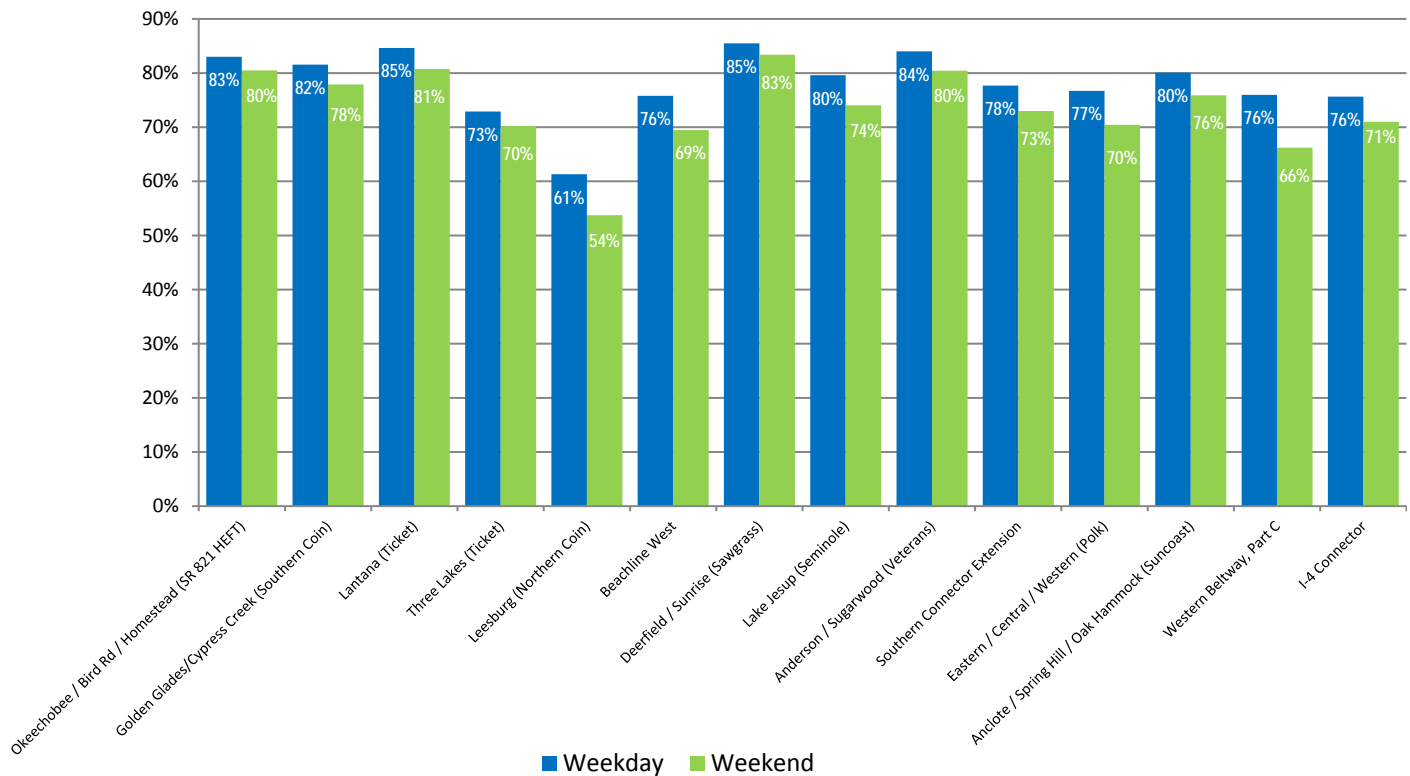


**Turnpike System
SunPass Participation by Region
FY 2016**



This graph depicts the average SunPass participation on the Turnpike System by region during FY 2016. As expected, SunPass participation in the region with mostly commuters was the highest (South Florida at 85 percent). On the other hand, SunPass participation in the tourist-oriented rural region of Central Florida was the lowest at 64 percent.

Select Turnpike Mainline Toll Plazas Weekday vs. Weekend SunPass Participation FY 2016

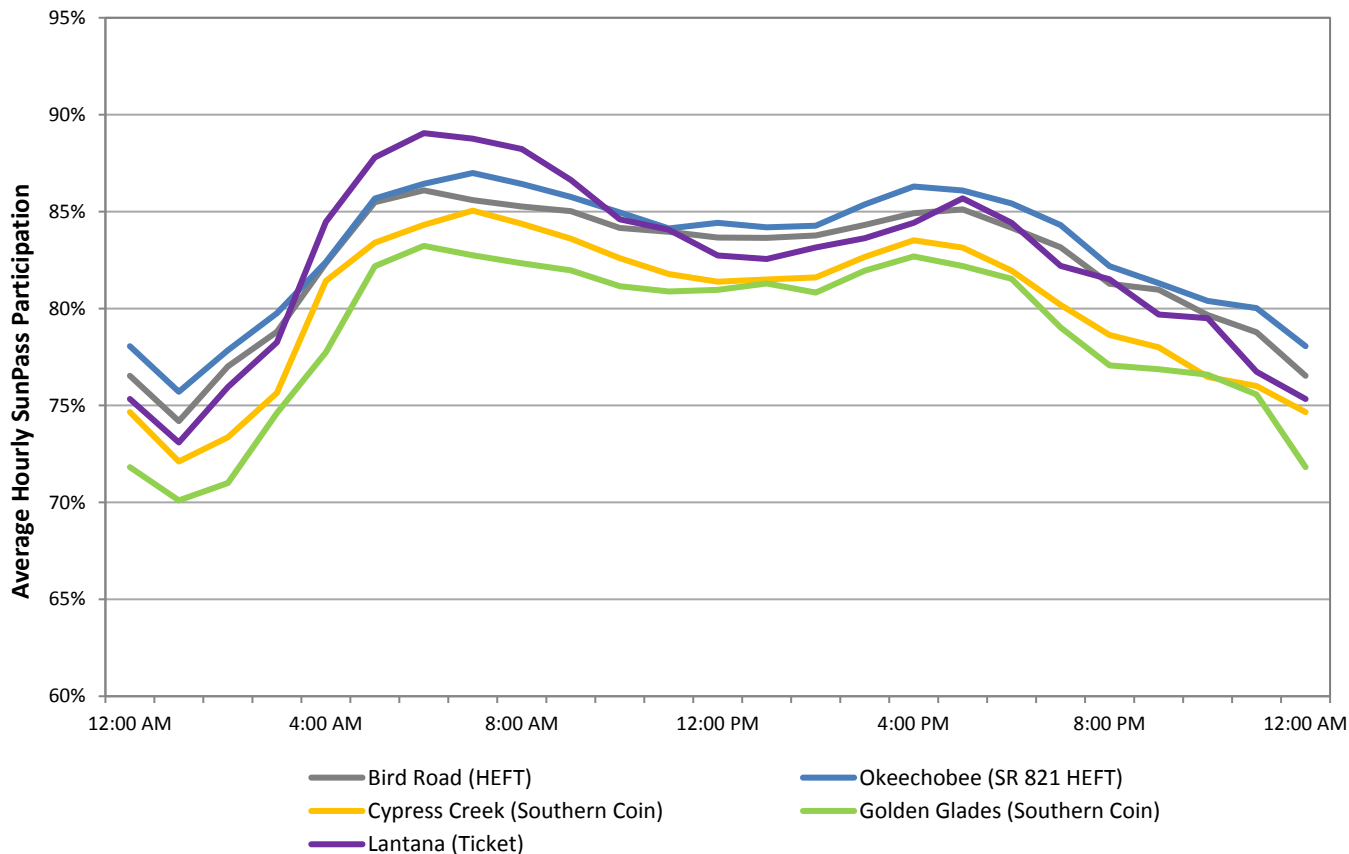


Source: Data obtained from Turnpike Enterprise Finance Office for the week beginning Monday, June 20, 2016.

A comparison between average weekday and weekend SunPass participation for a typical week in FY 2016 at select plazas is presented in the graph above.

As expected, average participation during weekdays exceeds weekend participation at each plaza. SunPass participation at the Deerfield mainline toll plaza, an All-Electronic Tolling location, reaches 85 percent during weekdays (one of the highest among all the facilities) and drops to 83 percent on the weekend. In particular, most of the commuter facilities, such as Southern Coin System, southern part of the Ticket System (Lantana), Seminole Expressway and the Veterans Expressway show a notable variation between weekday and weekend participation.

Mainline Toll Plazas – Southern Facilities Typical Weekday Hourly SunPass Participation

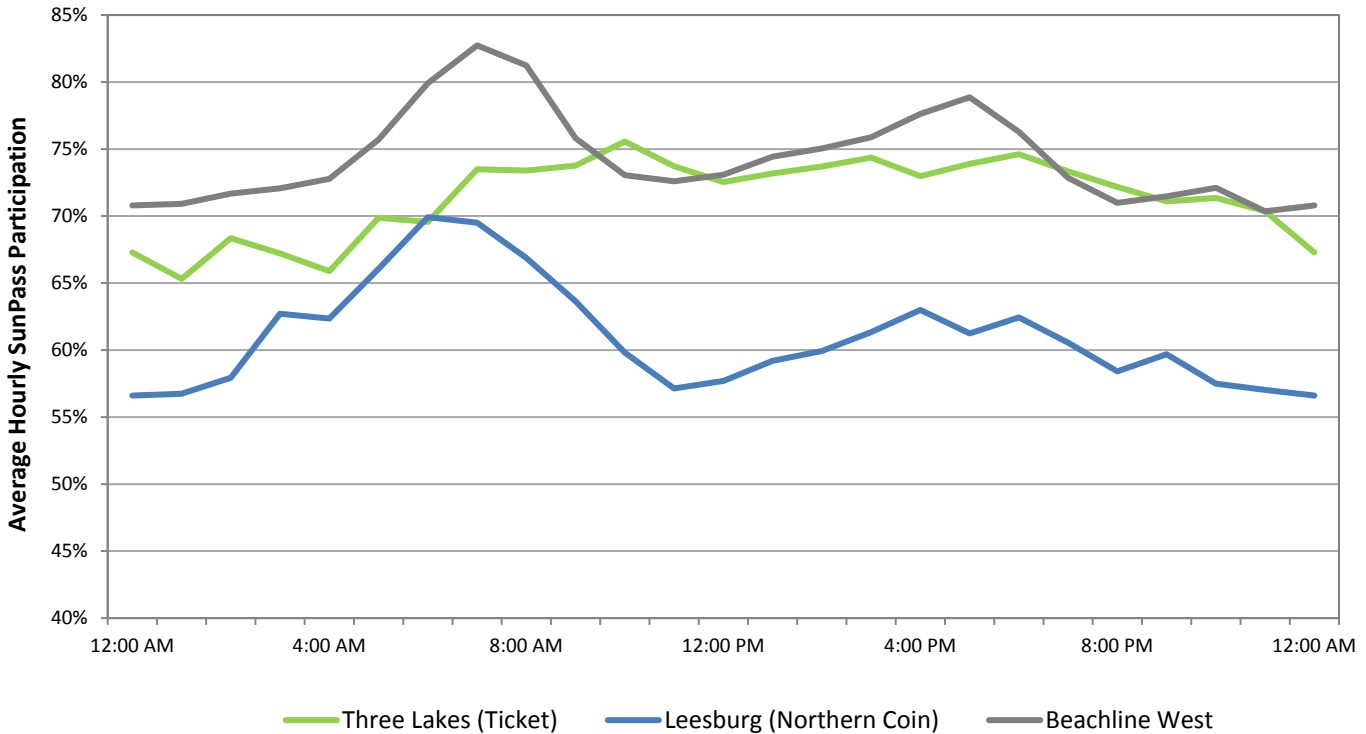


Source: Data obtained from Turnpike Enterprise Finance Office for the week beginning Monday, June 20, 2016.

This graph shows the hourly SunPass participation on weekdays for a typical week at select mainline toll plazas on the southern components of the Mainline System. These components include SR 821 (HEFT), Southern Coin System, and the southern portion of the Ticket System (Lantana).

As depicted in the graph, SunPass participation on these facilities increased during the early morning and evening hours. Peak-hour participation at the Okeechobee and Lantana toll plazas reached 87 and 89 percent, respectively, in the morning. In general, the morning peak participation at all five toll plazas was higher than the evening peak participation.

Mainline Toll Plazas – Northern Facilities Typical Weekday Hourly SunPass Participation



Source: Data obtained from Turnpike Enterprise Finance Office for the week beginning Monday, June 20, 2016.

This graph shows the hourly SunPass participation on weekdays for a typical week at select toll plazas on the northern components of the Mainline System. These components include the Northern Coin System, the northern portion of the Ticket System, and the Beachline West Expressway.

As depicted in the graph, SunPass participation at the Beachline West Expressway peaked at 83 percent during the morning peak hours. While the Leesburg toll plaza showed a significant rise in SunPass participation during the morning peak hours, it dropped in the late morning hours with some increase in the afternoon. In contrast, SunPass participation remained relatively stable throughout the day at the Three Lakes toll plaza. This pattern confirms the fact that long distance travelers and tourists are the primary users of that toll plaza.