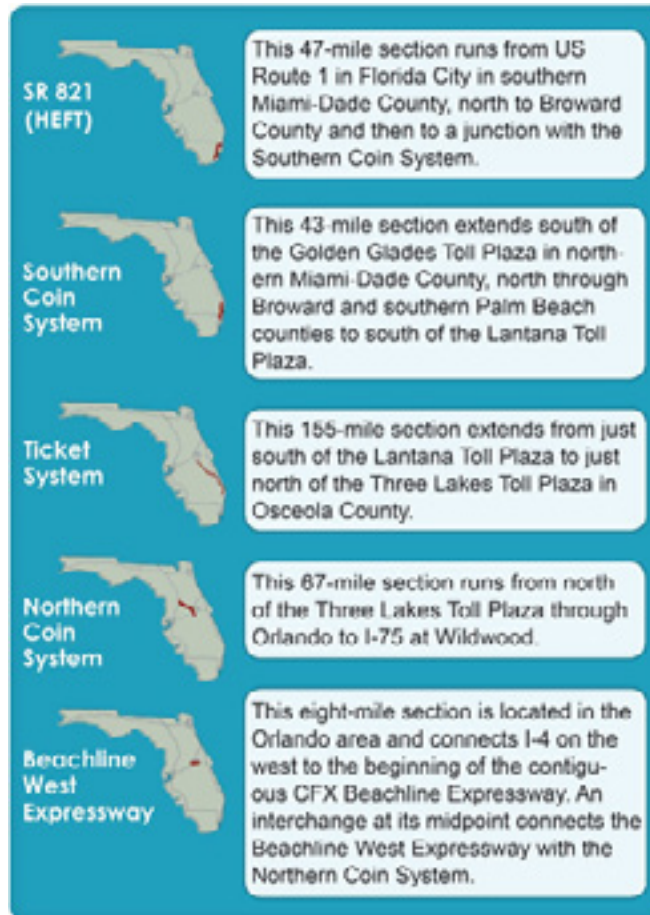


## Mainline Description



The Mainline component of Florida's Turnpike extends for 320 miles and consists of five distinct sections as shown in the figure above. These sections are the SR 821 (HEFT), Southern Coin System, Ticket System, Northern Coin System and the Beachline West Expressway.

All of the Mainline sections (except for the Ticket System) use the coin method of toll collection. In this method, customers pay specific tolls at across-the-road plazas located along the Turnpike and at selective ramp locations. Toll fares are based on vehicle classification and method of payment (SunPass customers pay less). The Ticket System requires cash customers to obtain a ticket that provides evidence of entry onto the facility and remit that ticket upon exiting the system. The transaction for SunPass customers is processed electronically without a ticket. Toll revenues on the Ticket System are based on the distance traveled multiplied by the applicable toll rate.

Additionally, the Mainline components that use the coin toll collection operate with the 'N minus 1' toll rate formula to establish the truck (3+ axle) toll schedule. The Ticket System operates using a straight 'N', per-axle method.

**Mainline Transactions and Toll Revenue  
FY 2018 vs. FY 2017**

Component	Transactions			Toll Revenue		
	FY 2018	FY 2017	Change	FY 2018	FY 2017	Change
SR 821 (HEFT)	201,102,931	201,715,863	(0.3%)	\$170,216,547	\$179,415,396	(5.1%)
Southern Coin System	170,581,791	167,596,362	1.8	173,999,751	174,768,744	(0.4)
Ticket System	57,458,120	56,529,589	1.6	176,190,675	179,276,863	(1.7)
Northern Coin System	94,482,427	88,513,713	6.7	157,042,065	149,379,553	5.1
Beachline West Expressway	34,422,108	32,762,275	5.1	28,984,108	28,019,055	3.4
<b>Total</b>	<b>558,047,377</b>	<b>547,117,802</b>	<b>2.0%</b>	<b>\$706,433,146</b>	<b>\$710,859,611</b>	<b>(0.6%)</b>

Source: Turnpike Enterprise Finance Office.

**Mainline Summary**  
**Quarterly Gross Toll Revenue Results**  
**FY 2018 vs. FY 2017**

Months	FY 2018	FY 2017	Variance	
			Amount	Change
July	\$61,285,054	\$60,432,989	\$852,065	1.4%
August	61,104,876	59,144,460	1,960,416	3.3
September	27,415,156	56,046,160	(28,631,004)	(51.1)
1st Quarter Subtotal	149,805,086	175,623,609	(25,818,523)	(14.7)
October	61,017,943	52,204,020	8,813,923	16.9
November	63,250,206	59,906,340	3,343,866	5.6
December	64,629,571	62,176,652	2,452,919	3.9
2nd Quarter Subtotal	188,897,720	174,287,012	14,610,708	8.4
January	62,147,241	59,635,799	2,511,442	4.2
February	57,989,219	55,877,329	2,111,890	3.8
March	67,083,867	65,553,658	1,530,209	2.3
3rd Quarter Subtotal	187,220,327	181,066,786	6,153,541	3.4
April	60,263,531	60,511,474	(247,943)	(0.4)
May	63,319,665	61,321,308	1,998,357	3.3
June	56,926,817	58,049,422	(1,122,605)	(1.9)
4th Quarter Subtotal	180,510,013	179,882,204	627,809	0.3
<b>Annual Total</b>	<b>\$706,433,146</b>	<b>\$710,859,611</b>	<b>(\$4,426,465)</b>	<b>(0.6%)</b>

Source: Turnpike Enterprise Finance Office.

**Mainline  
Comparison of Daily Transactions by Month  
FY 2018 vs. FY 2017**

Month	Average Daily Transactions (ADT)*		Change
	FY 2018	FY 2017	
July	1,468,925	1,439,413	2.1%
August	1,504,455	1,454,060	3.5
September	1,356,613	1,448,228	(6.3)
October	1,543,688	1,415,793	9.0
November	1,560,359	1,504,542	3.7
December	1,540,077	1,508,162	2.1
January	1,516,215	1,475,355	2.8
February	1,590,174	1,551,596	2.5
March	1,632,441	1,613,453	1.2
April	1,575,012	1,544,893	1.9
May	1,525,407	1,532,226	(0.4)
June	1,536,519	1,505,030	2.1
<b>AA DT</b>	<b>1,528,897</b>	<b>1,498,953</b>	<b>2.0%</b>

Source: Turnpike Enterprise Finance Office.  
\* ADT at tolled plaza locations.

**SR 821 (HEFT)  
Traffic Comparison of FY 2018 vs. FY 2017**

Interchange		Annual Average Daily Transactions (AADT)*		
MP	Location	FY 2018	FY 2017	Change
47	MIRAMAR PLAZA	See Southern Coin System		
47	NW 27th Avenue	13,051	12,845	1.6%
43	NW 57th Avenue	10,389	10,392	0.0
35	Okeechobee Road (US 27)	10,162	9,298	9.3
34	NW 106th Street	8,291	8,218	0.9
32	OKEECHOBEE PLAZA	113,430	115,634	(1.9)
31	NW 74th Street	18,511	16,276	13.7
29	NW 41st Street	17,431	17,823	(2.2)
27	NW 12th Street (Beacon Tradeport)	11,716	12,484	(6.2)
25	US 41/SW 8th Street (Tamiami Trail)	35,123	35,660	(1.5)
23	Bird Road (SW 40th Street)	31,917	33,068	(3.5)
22	BIRD ROAD PLAZA	129,906	133,428	(2.6)
20	SW 120th Street and Kendall Drive	30,484	29,817	2.2
16	Coral Reef Drive	11,299	10,863	4.0
10	HOMESTEAD PLAZA	95,645	94,161	1.6
9	Allapattah Road (SW 112th Avenue)	5,538	5,195	6.6
5	Biscayne Drive (SW 288th Street)	4,583	4,185	9.5
2	Campbell Drive (SW 312th Street)	3,491	3,296	5.9
<b>Total</b>		<b>550,967</b>	<b>552,643</b>	<b>(0.3%)</b>

Source: Turnpike Enterprise Finance Office.

\* AADT at tolled plaza locations.

**SR 821 (HEFT)**  
**Quarterly Revenue Results**  
**FY 2018 vs. FY 2017**

Months	FY 2018	FY 2017	Variance	
			Amount	Change
July	\$15,013,872	\$15,329,214	(\$315,342)	(2.1%)
August	15,360,309	15,546,951	(186,642)	(1.2)
September	6,044,640	14,923,573	(8,878,933)	(59.5)
1st Quarter Subtotal	36,418,821	45,799,738	(9,380,917)	(20.5)
October	14,826,136	13,438,368	1,387,768	10.3
November	15,422,835	15,192,133	230,702	1.5
December	15,432,704	15,348,060	84,644	0.6
2nd Quarter Subtotal	45,681,675	43,978,561	1,703,114	3.9
January	15,157,629	15,038,943	118,686	0.8
February	14,187,553	14,222,555	(35,002)	(0.2)
March	15,571,528	16,043,389	(471,861)	(2.9)
3rd Quarter Subtotal	44,916,710	45,304,887	(388,177)	(0.9)
April	14,458,914	14,872,216	(413,302)	(2.8)
May	15,431,072	15,169,113	261,959	1.7
June	13,309,355	14,290,881	(981,526)	(6.9)
4th Quarter Subtotal	43,199,341	44,332,210	(1,132,869)	(2.6)
<b>Annual Total</b>	<b>\$170,216,547</b>	<b>\$179,415,396</b>	<b>(\$9,198,849)</b>	<b>(5.1%)</b>

Source: Turnpike Enterprise Finance Office.

**Southern Coin System  
Traffic Comparison of FY 2018 vs. FY 2017**

Interchange		Annual Average Daily Transactions (AADT)*		
MP	Location	FY 2018	FY 2017	Change
86	Boynton Beach Boulevard	19,590	19,414	0.9%
81	Delray Beach (Atlantic Avenue)	15,784	15,404	2.5
75	Boca Raton (Glades Road)	20,915	21,073	(0.7)
69	Sample Road	9,705	9,844	(1.4)
67	Coconut Creek Parkway	14,138	13,327	6.1
63	CYPRESS CREEK PLAZA	121,765	119,373	2.0
62	Commercial Boulevard	33,431	32,354	3.3
58	Sunrise Boulevard	18,283	17,578	4.0
53	Griffin Road	17,499	17,258	1.4
49	Hollywood Boulevard	26,460	25,486	3.8
47	County Line Road	5,420	5,197	4.3
47	NW 27th Avenue	3,799	3,661	3.8
47	MIRAMAR PLAZA	47,363	47,656	(0.6)
2X	Dolphin Center	11,969	11,954	0.1
0X	GOLDEN GLADES PLAZA	101,226	99,589	1.6
<b>Total</b>		<b>467,347</b>	<b>459,168</b>	<b>1.8%</b>

Source: Turnpike Enterprise Finance Office.

\* AADT at tolled plaza locations.

**Southern Coin System  
Quarterly Revenue Results  
FY 2018 vs. FY 2017**

Months	FY 2018	FY 2017	Variance	
			Amount	Change
July	\$12,680,159	\$12,352,280	\$327,879	2.7%
August	13,110,821	12,611,977	498,844	4.0
September	6,008,204	12,135,093	(6,126,889)	(50.5)
Lantana Adjustment *	5,036,322	5,877,417	(841,095)	(14.3)
1st Quarter Subtotal	36,835,506	42,976,767	(6,141,261)	(14.3)
October	13,261,647	10,984,104	2,277,543	20.7
November	13,324,624	12,540,345	784,279	6.3
December	13,492,620	13,096,500	396,120	3.0
Lantana Adjustment *	6,573,829	5,947,840	625,989	10.5
2nd Quarter Subtotal	46,652,720	42,568,789	4,083,931	9.6
January	13,372,749	12,801,507	571,242	4.5
February	12,458,743	12,147,672	311,071	2.6
March	13,912,703	13,864,193	48,510	0.3
Lantana Adjustment *	6,599,287	6,252,329	346,958	5.5
3rd Quarter Subtotal	46,343,482	45,065,701	1,277,781	2.8
April	12,779,927	12,716,319	63,608	0.5
May	13,391,920	13,038,607	353,313	2.7
June	11,641,543	12,264,911	(623,368)	(5.1)
Lantana Adjustment *	6,354,653	6,137,650	217,003	3.5
4th Quarter Subtotal	44,168,043	44,157,487	10,556	0.0
<b>Annual Total</b>	<b>\$173,999,751</b>	<b>\$174,768,744</b>	<b>(\$768,993)</b>	<b>(0.4%)</b>

Source: Turnpike Enterprise Finance Office.

\* Amount based on actual two-way revenue traffic at the plaza multiplied by an average adjustment rate.



**Ticket System  
Traffic Comparison of FY 2018 vs. FY 2017**

Interchange		Annual Average Daily Transactions (AADT)*		
MP	Location	FY 2018	FY 2017	Change
236	THREE LAKES PLAZA	16,857	16,586	1.6%
193	Yeehaw Junction	4,421	4,224	4.7
152	Fort Pierce	10,112	9,761	3.6
142	Port St. Lucie	6,599	6,566	0.5
138	Becker Road	3,161	2,929	7.9
133	Stuart	6,424	6,279	2.3
116	Jupiter	11,747	11,540	1.8
109	Palm Beach Gardens (PGA Boulevard)	8,695	8,723	(0.3)
107	SR 710	8,146	7,750	5.1
99	West Palm Beach (Okeechobee Boulevard)	9,394	9,347	0.5
98	Jog Road	2,843	2,807	1.3
97	SR 80 (Southern Boulevard)	14,289	13,933	2.6
93	Lake Worth	13,640	13,562	0.6
88	LANTANA PLAZA	41,092	40,868	0.5
<b>Total</b>		<b>157,420</b>	<b>154,875</b>	<b>1.6%</b>

Source: Turnpike Enterprise Finance Office.

\* AADT based on paying transactions.

**Ticket System  
Quarterly Revenue Results  
FY 2018 vs. FY 2017**

Months	FY 2018	FY 2017	Variance	
			Amount	Change
July	\$19,278,488	\$19,124,412	\$154,076	0.8%
August	18,640,238	17,929,123	711,115	4.0
September	8,771,909	16,565,135	(7,793,226)	(47.0)
Lantana Adjustment*	(5,036,322)	(5,877,417)	841,095	(14.3)
Three Lakes Adjustment**	(3,497,047)	(4,002,097)	505,050	(12.6)
1st Quarter Subtotal	38,157,266	43,739,156	(5,581,890)	(12.8)
October	18,276,130	15,926,423	2,349,707	14.8
November	19,319,046	18,743,004	576,042	3.1
December	20,234,654	19,772,525	462,129	2.3
Lantana Adjustment*	(6,573,829)	(5,947,840)	(625,989)	10.5
Three Lakes Adjustment**	(4,468,940)	(4,031,737)	(437,203)	10.8
2nd Quarter Subtotal	46,787,061	44,462,375	2,324,686	5.2
January	18,925,794	18,499,462	426,332	2.3
February	17,459,509	16,867,547	591,962	3.5
March	21,128,464	20,488,502	639,962	3.1
Lantana Adjustment*	(6,599,287)	(6,252,329)	(346,958)	5.5
Three Lakes Adjustment**	(4,401,794)	(4,086,061)	(315,733)	7.7
3rd Quarter Subtotal	46,512,686	45,517,121	995,565	2.2
April	18,459,359	19,013,303	(553,944)	(2.9)
May	19,402,699	19,071,495	331,204	1.7
June	17,635,312	17,829,427	(194,115)	(1.1)
Lantana Adjustment*	(6,354,653)	(6,137,650)	(217,003)	3.5
Three Lakes Adjustment**	(4,409,055)	(4,218,364)	(190,691)	4.5
4th Quarter Subtotal	44,733,662	45,558,211	(824,549)	(1.8)
<b>Annual Total</b>	<b>\$176,190,675</b>	<b>\$179,276,863</b>	<b>(\$3,086,188)</b>	<b>(1.7%)</b>

Source: Turnpike Enterprise Finance Office.

\* Allocated to Southern Coin System. Amount based on actual two-way revenue traffic at the plaza multiplied by an average adjustment rate.

\*\* Allocated to Northern Coin System. Amount based on actual two-way revenue traffic at the plaza multiplied by an average adjustment rate.

**Northern Coin System  
Traffic Comparison of FY 2018 vs. FY 2017**

Interchange		Annual Average Daily Transactions (AADT)*		
MP	Location	FY 2018	FY 2017	Change
296	CR 470	1,615	1,457	10.8%
289	US 27/Leesburg North	5,771	5,978	(3.5)
288	LEESBURG PLAZA	44,566	42,287	5.4
285	US 27/Leesburg South	12,530	12,308	1.8
278	Mineeola (Hancock Rd)**	7,232	4,109	N/A
272	SR 50	37,311	39,661	(5.9)
259	Orlando/I-4	31,942	30,877	3.4
251	Consulate Drive	9,721	8,755	11.0
254	Orlando South	37,080	34,944	6.1
251	SR 417/Northbound-on	9,780	6,732	45.3
249	Osceola Parkway	24,590	23,632	4.1
244	Kissimmee/St. Cloud	20,955	21,371	(1.9)
240	Kissimmee Park Road	15,763	14,276	10.4
<b>Total</b>		<b>258,856</b>	<b>246,387</b>	<b>5.1%</b>

Source: Turnpike Enterprise Finance Office.

\* AADT at tolled plaza locations.

\*\* Opened to traffic on June 10, 2017.

**Northern Coin System  
Quarterly Revenue Results  
FY 2018 vs. FY 2017**

Months	FY 2018	FY 2017	Variance	
			Amount	Change
July	\$11,871,940	\$11,237,397	\$634,543	5.6%
August	11,594,747	10,775,928	818,819	7.6
September	5,502,610	10,216,853	(4,714,243)	(46.1)
Three Lakes Adjustment *	3,497,047	4,002,097	(505,050)	(12.6)
1st Quarter Subtotal	32,466,344	36,232,275	(3,765,931)	(10.4)
October	12,118,674	9,775,545	2,343,129	24.0
November	12,516,555	11,120,192	1,396,363	12.6
December	12,777,840	11,564,668	1,213,172	10.5
Three Lakes Adjustment *	4,468,940	4,031,737	437,203	10.8
2nd Quarter Subtotal	41,882,009	36,492,142	5,389,867	14.8
January	12,065,073	10,910,979	1,154,094	10.6
February	11,455,775	10,355,242	1,100,533	10.6
March	13,683,849	12,513,217	1,170,632	9.4
Three Lakes Adjustment *	4,401,794	4,086,061	315,733	7.7
3rd Quarter Subtotal	41,606,491	37,865,499	3,740,992	9.9
April	12,098,498	11,491,199	607,299	5.3
May	12,603,893	11,626,948	976,945	8.4
June	11,975,775	11,453,126	522,649	4.6
Three Lakes Adjustment *	4,409,055	4,218,364	190,691	4.5
4th Quarter Subtotal	41,087,221	38,789,637	2,297,584	5.9
<b>Annual Total</b>	<b>\$157,042,065</b>	<b>\$149,379,553</b>	<b>\$7,662,512</b>	<b>5.1%</b>

Source: Turnpike Enterprise Finance Office.

\* Amount based on actual two-way revenue traffic at the plaza multiplied by an average adjustment rate.

**Beachline West Expressway  
Comparison of Daily Transactions by Month  
FY 2018 vs. FY 2017**

Month	Average Daily Transactions (ADT)*		Change
	FY 2018	FY 2017	
July	89,357	86,068	3.8%
August	88,449	83,758	5.6
September	82,634	83,590	(1.1)
October	94,667	85,090	11.3
November	94,063	88,384	6.4
December	93,987	88,393	6.3
January	93,521	88,786	5.3
February	98,974	94,529	4.7
March	104,437	99,449	5.0
April	97,650	94,697	3.1
May	95,482	93,580	2.0
June	98,783	91,214	8.3
<b>AADT</b>	<b>94,307</b>	<b>89,760</b>	<b>5.1%</b>

Source: Turnpike Enterprise Finance Office.

\* ADT at tolled plaza location.

**Beachline West Expressway  
Quarterly Revenue Results  
FY 2018 vs. FY 2017**

Months	FY 2018	FY 2017	Variance	
			Amount	Change
July	\$2,440,596	\$2,389,687	\$50,909	2.1%
August	2,398,761	2,280,480	118,281	5.2
September	1,087,793	2,205,506	(1,117,713)	(50.7)
1st Quarter Subtotal	5,927,150	6,875,673	(948,523)	(13.8)
October	2,535,355	2,079,579	455,776	21.9
November	2,667,145	2,310,667	356,478	15.4
December	2,691,753	2,394,899	296,854	12.4
2nd Quarter Subtotal	7,894,253	6,785,145	1,109,108	16.3
January	2,625,997	2,384,908	241,089	10.1
February	2,427,639	2,284,313	143,326	6.3
March	2,787,322	2,644,357	142,965	5.4
3rd Quarter Subtotal	7,840,958	7,313,578	527,380	7.2
April	2,466,833	2,418,438	48,395	2.0
May	2,490,084	2,415,143	74,941	3.1
June	2,364,830	2,211,078	153,752	7.0
4th Quarter Subtotal	7,321,747	7,044,659	277,088	3.9
<b>Annual Total</b>	<b>\$28,984,108</b>	<b>\$28,019,055</b>	<b>\$965,053</b>	<b>3.4%</b>

Source: Turnpike Enterprise Finance Office.

**Mainline  
Seasonal Traffic Variation  
FY 2018**

Month	Seasonal Factor				
	SR 821 (HEFT)	Southern Coin System	Ticket System	Northern Coin System	Beachline West Expressway
July, 2017	0.97	0.96	0.96	0.97	0.95
August	1.00	0.99	0.99	0.97	0.94
September	0.90	0.88	0.90	0.89	0.88
October	1.03	1.01	0.99	1.00	1.01
November	1.03	1.02	1.03	1.02	1.00
December	1.01	1.01	1.01	1.02	1.00
January, 2018	0.99	1.01	1.00	0.97	0.99
February	1.04	1.05	1.05	1.03	1.05
March	1.05	1.07	1.09	1.09	1.11
April	1.03	1.04	1.03	1.03	1.04
May	0.99	1.01	0.99	1.02	1.02
June	1.00	1.00	0.99	1.03	1.05

Source: Turnpike Enterprise Finance Office.

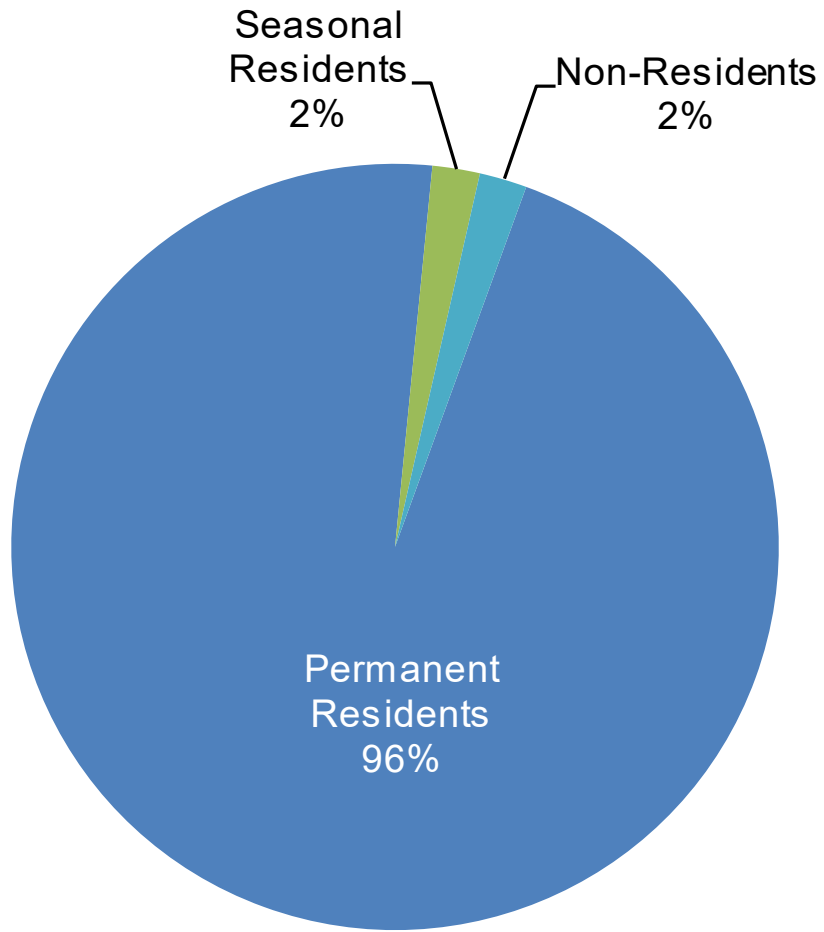
**Mainline  
FY 2018 Toll Revenue Forecast (\$000)  
FY 2019 through FY 2029**

Fiscal Year	Estimated Gross Toll Revenue (\$000)					
	SR 821 (HEFT)	Southern Coin	Ticket	Northern Coin	Beachline West	Total Mainline
2019	\$188,473	\$183,690	\$189,391	\$167,462	\$30,738	\$759,754
2020	195,846	187,225	196,933	175,447	33,822	789,273
2021	200,786	195,600	201,900	175,753	35,243	809,282
2022	208,980	201,459	199,463	191,155	36,670	837,727
2023	216,166	206,520	212,160	197,954	39,229	872,029
2024	222,315	211,297	217,067	206,963	40,567	898,209
2025	228,412	215,328	221,428	214,021	41,881	921,070
2026	234,447	219,218	225,877	222,696	43,198	945,436
2027	240,630	223,178	230,415	229,219	44,449	967,891
2028	246,922	227,209	235,044	234,768	46,871	990,814
2029	253,368	231,314	239,766	239,849	48,823	1,013,120

Note: The above revenue forecasts reflect the implementation of All-Electronic Tolling on: the Southern Coin System from I-595 to Sawgrass Expressway in FY 2020, and from Sawgrass Expressway to Lantana in FY 2021; the Northern Coin System in FY 2021; and the Ticket System in FY 2022. The forecasts also include revenues from additional lanes on the sections of the HEFT from north of SW 137th Avenue to SR 836 in FY 2019, and from SR 836 to east of I-75 in FY 2022. Similarly, the Beachline West forecast includes the impact from additional lanes on the entire facility starting in FY 2020. Additionally, the Northern Coin System reflects impact from additional lanes from Osceola Parkway to Orlando South in FY 2022, from Kissimmee South to Osceola Parkway in FY 2024, and from Orlando South to I-4 in FY 2026. Further, the forecasts reflect new interchanges opening on the HEFT at NW 170th Street in FY 2023 and on the Northern Coin System at SR 417 (remaining movements) in FY 2021 and at Sand Lake Road in FY 2024.

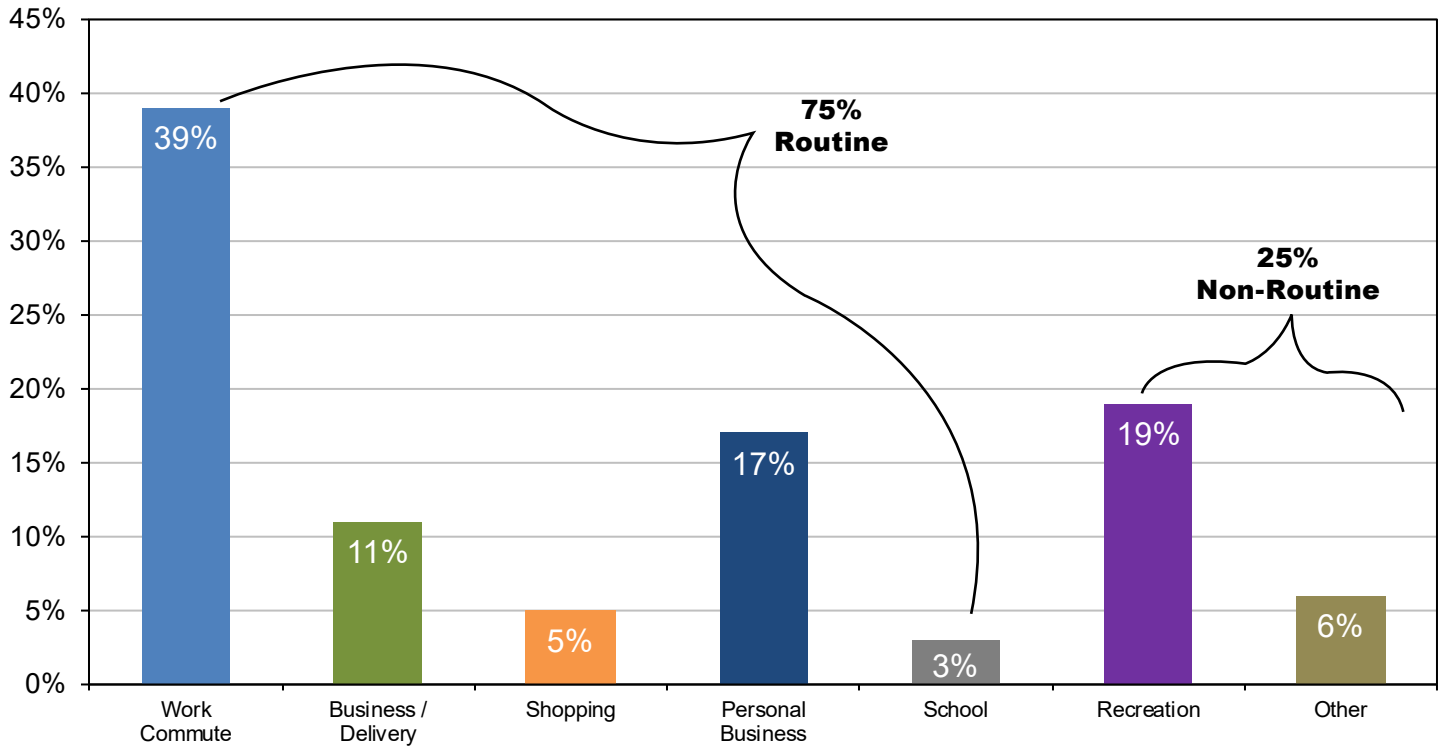


**Florida's Turnpike System  
Customer Mix**



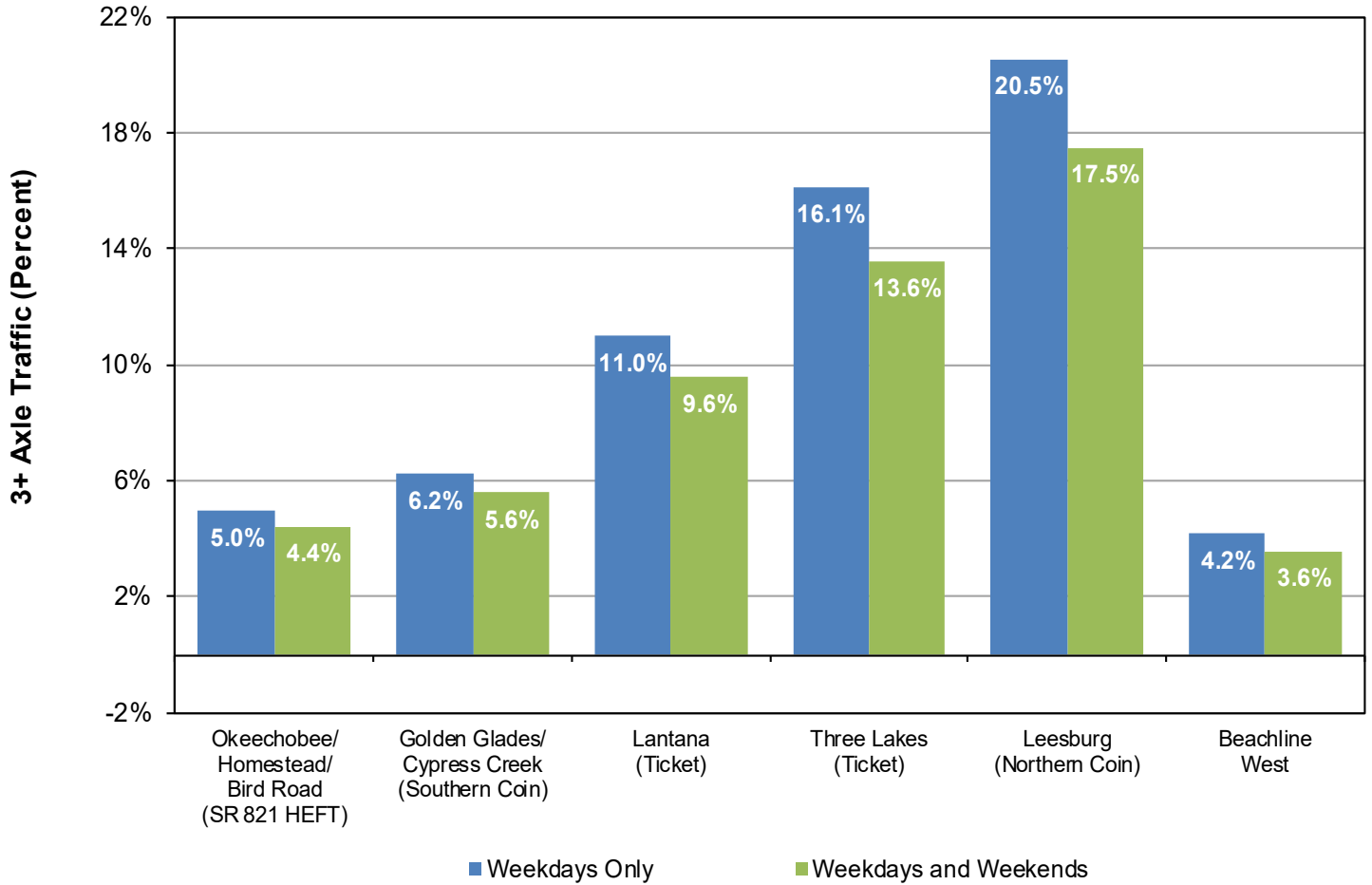
Source: Turnpike Systemwide Customer Survey Report

## Florida's Turnpike System Trip Purpose



Source: Turnpike System wide Customer Survey Report

**Mainline Toll Plazas  
3+ Axle Vehicles in the Vehicle Mix**

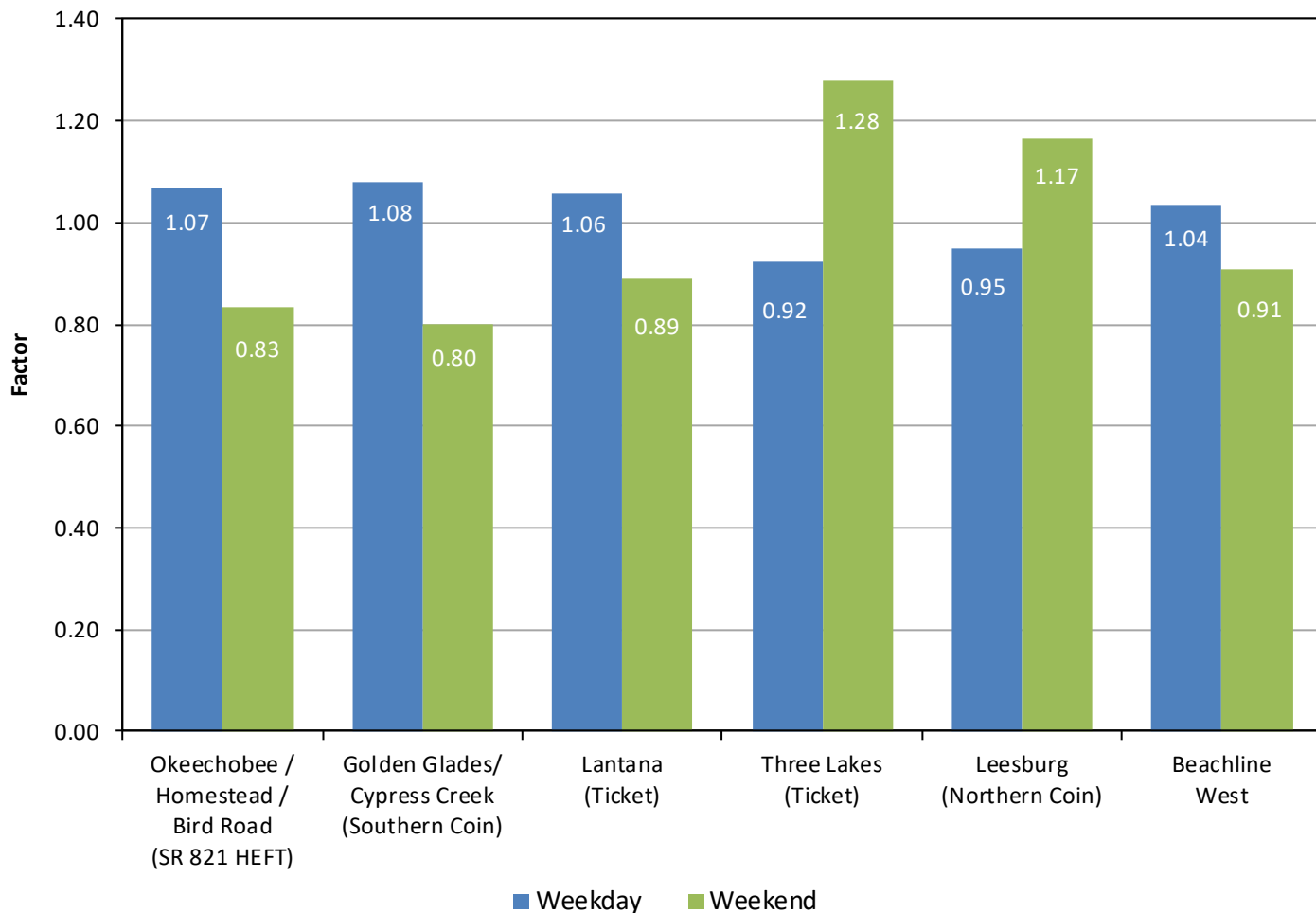


Source: Data obtained from Turnpike Enterprise Finance Office for the week beginning November 6, 2017.

This graph provides an overview of the percentage of truck traffic by Mainline facility. As in prior years, the highest percentage of 3+ axle traffic was reported at the Leesburg Toll Plaza on the Northern Coin System at over 20 percent for weekdays. The Beachline West Expressway and SR 821 (HEFT), facilities that largely serve the commuters and the tourists, reported the lowest percentage of 3+ axle traffic at approximately 4 percent for the entire week.

Also indicated is the difference between the southern and northern ends of the Ticket System (Lantana and Three Lakes, respectively). Traffic patterns at Lantana are trending towards those of the Southern Coin due to increasing urban development in the area. On the other hand, Three Lakes demonstrates patterns similar to the Northern Coin since it serves long distance travelers such as multi-axle commercial vehicles and tourists.

## Mainline Traffic Weekends vs. Weekdays



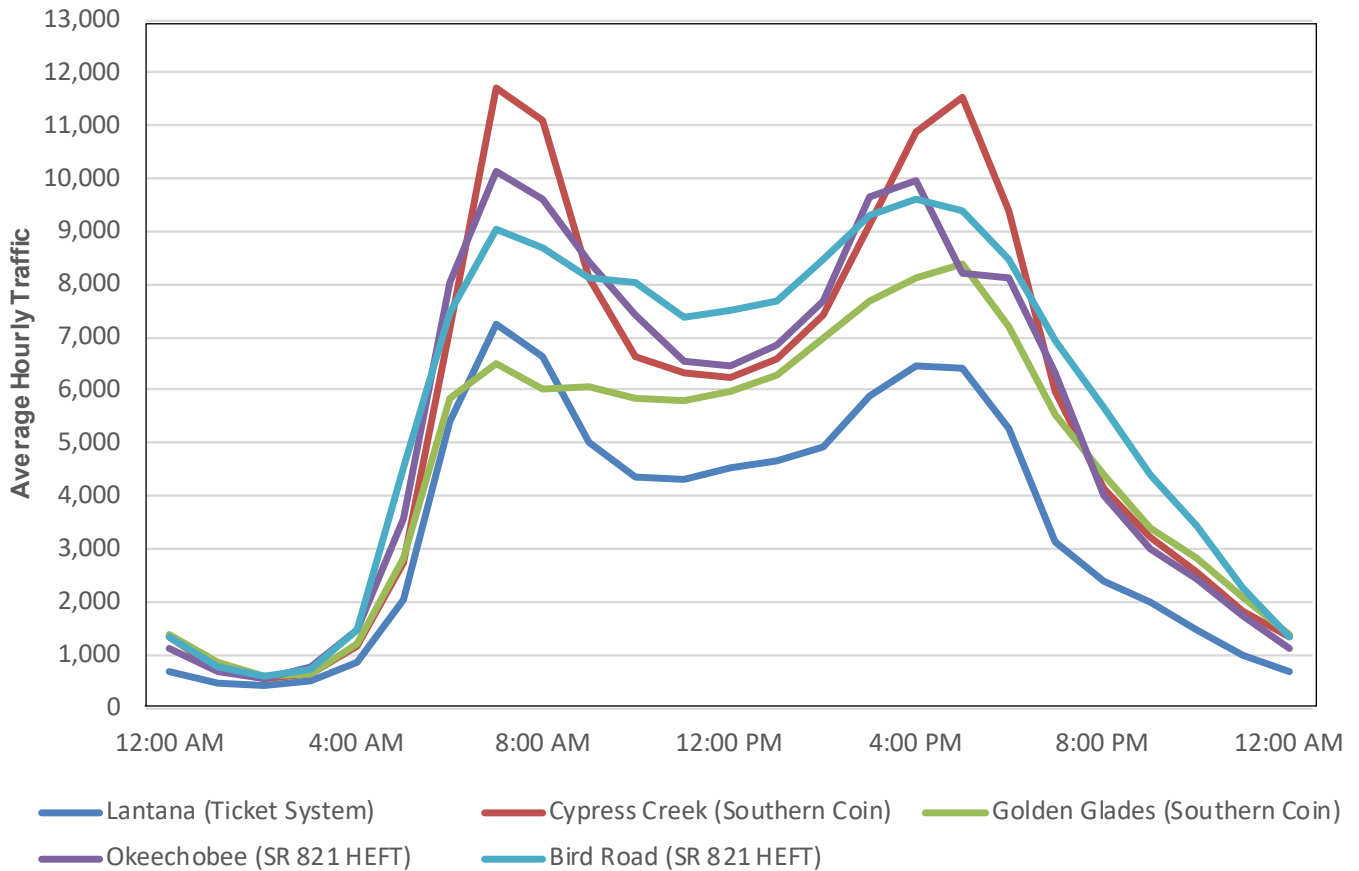
Source: Data obtained from Turnpike Enterprise Finance Office for the week beginning November 6, 2017.

Note: A Factor of 1.0 represents a typical average day over the 7-day period.

This analysis illustrates that Turnpike traffic varies between weekdays and weekends. For example, a Turnpike facility in an urban area may be heavily traveled by commuters during the week, but substantially less utilized over the weekend. The analysis differentiates between facilities more commonly used for business-related/commuter purposes and facilities predominantly used for tourist/recreational purposes. The average daily transaction (ADT) volumes normally grouped are weekdays (Monday through Friday) and weekends (Saturday and Sunday).

Assuming that an average day in a seven-day week represents the baseline for comparison between weekdays and weekends, a weekday/weekend factor is calculated for a representative group of mainline toll plazas. These factors are shown in the graph above. As expected, the weekday factors at the plazas that primarily serve commuter traffic (i.e., SR 821 HEFT, Southern Coin System and Lantana) are 6 to 8 percent higher than the average traffic for the entire week. Conversely, weekend traffic at these plazas is 11 to 20 percent lower than the weekly average. On the other hand, traffic at Three Lakes and the Northern Coin System (Leesburg) indicates significantly higher weekend versus weekday traffic. This trend is also expected since these plazas predominately serve tourists and recreational travelers.

## Mainline Toll Plazas - Southern Facilities Typical Hourly Weekday Traffic

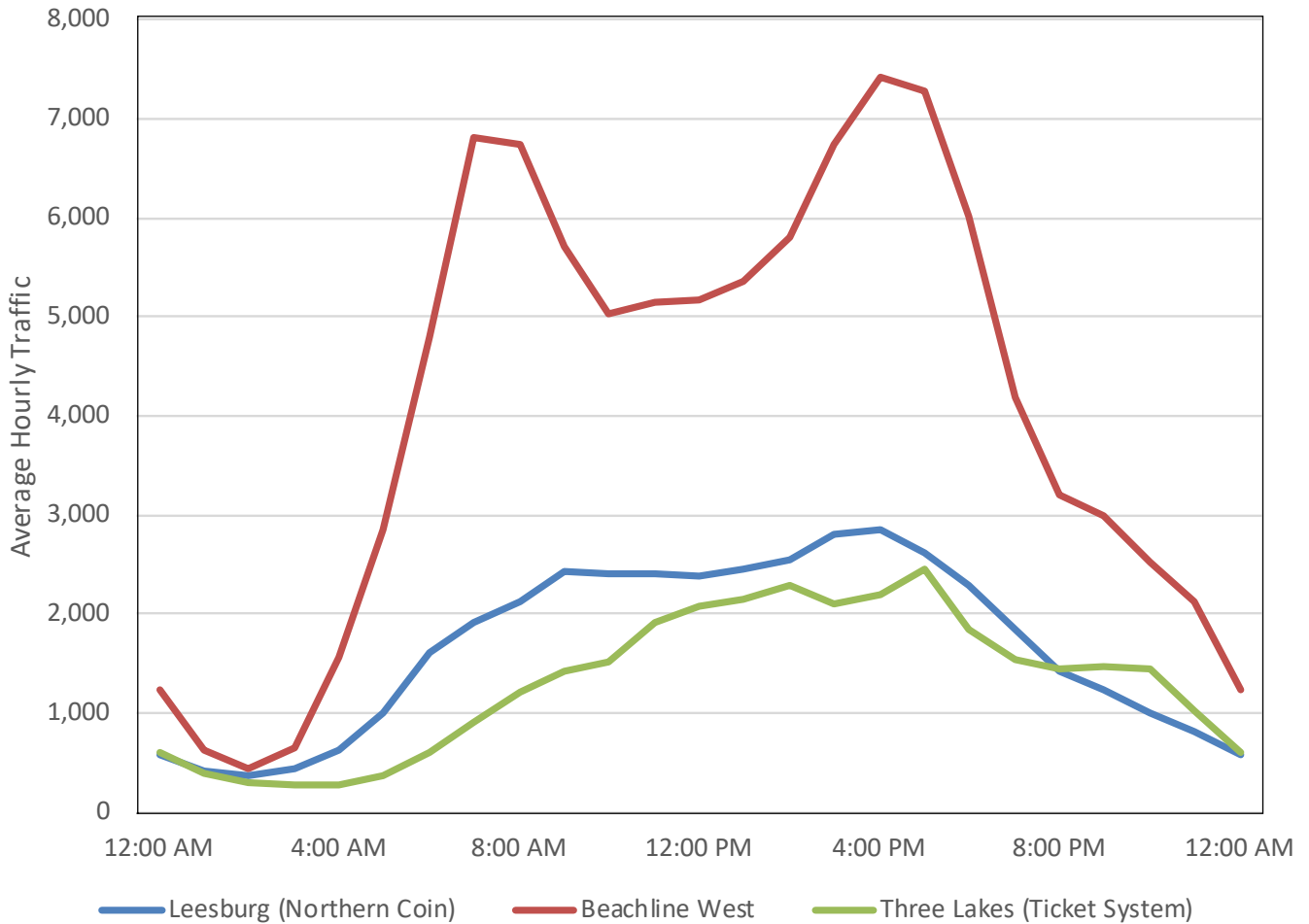


Source: Data obtained from Turnpike Enterprise Finance Office for the 5-day period starting Monday, November 6, 2017.

This graph shows the hourly traffic on weekdays in a typical week at select mainline toll plazas for the southern components of the Mainline (these include SR 821 HEFT, the Southern Coin System and the southern portion of the Ticket System).

As indicated in the graph, travel on these facilities increased notably during the early morning and evening hours. For example, for the mainline plazas located on SR 821 (HEFT), Southern Coin System and Ticket System, an average of 41 percent of all daily traffic occurred during the peak periods (7:00 AM to 10:00 AM and 4:00 PM to 7:00 PM). The Lantana toll plaza on the Ticket System has increasingly become commuter-oriented in the recent years. Its peaking traffic volumes have increased significantly similar to SR 821 (HEFT) and Southern Coin as more travelers in the Lake Worth and West Palm Beach areas utilize the Turnpike for their daily commute.

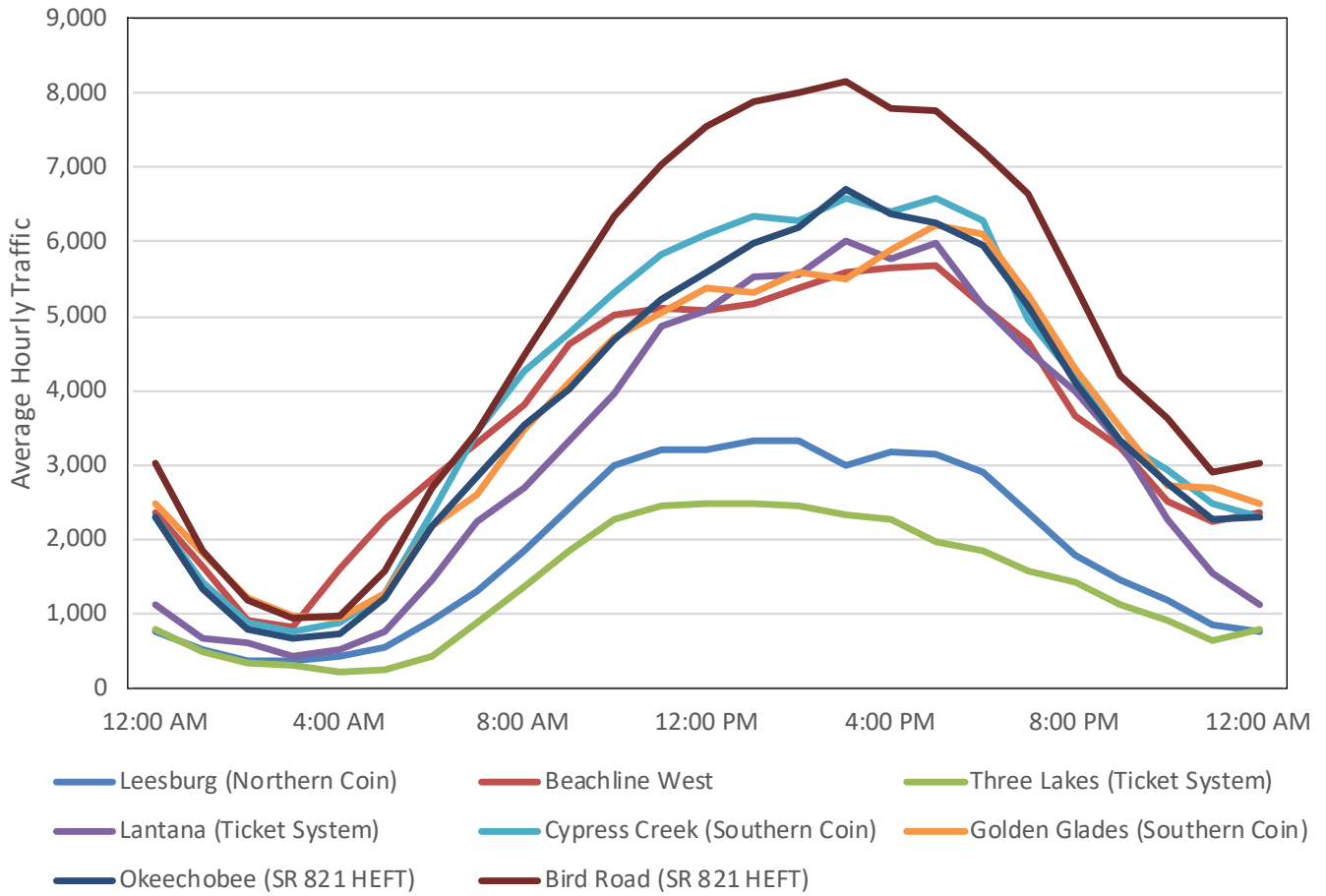
### Mainline Toll Plazas - Northern Facilities Typical Hourly Weekday Traffic



Source: Data obtained from Turnpike Enterprise Finance Office for the 5-day period starting Monday, November 6, 2017.

This graph shows the hourly traffic on weekdays in a typical week at select mainline toll plazas for the northern components of the Mainline (these include the Northern Coin System, the northern portion of the Ticket System and the Beachline West Expressway). As depicted in the graph, travel on these facilities increased during the early morning hours and remained relatively constant throughout the midday and early evening periods. The absence of a definite morning and evening peak period (with some exception to the Beachline West Expressway) indicates that the toll plazas along these Mainline facilities are less commuter-oriented than those located along the southern components of the Mainline. These results also are consistent with the FY 2017 results.

## Mainline Toll Plazas Typical Hourly Weekend Traffic



Source: Data obtained from Turnpike Enterprise Finance Office for the 2-day period starting Saturday, November 11, 2017.

This graph presents the hourly traffic at the toll plazas of the Mainline components during a typical weekend. As the graph demonstrates, travel on these facilities peaked in the afternoon and remained relatively constant until the evening hours.