

Expansion Projects Description



1990 The Sawgrass Expressway is a 23-mile, four-lane, limited access toll facility located in northern Broward County. It begins with a connection at I-595 and I-75, extending north then east to Powerline Road between the Turnpike Mainline and I-95.



1999 The Polk Parkway is a 25-mile, two-lane and four-lane, limited access toll facility in Polk County that provides a beltway around the western, southern and eastern perimeters of the City of Lakeland.



1994 The Seminole Expressway is an 18-mile, four-lane, limited access toll facility that extends CFX's Central Florida GreeneWay (SR 417) north from the Orange County line, across the 2.1-mile Lake Jesup Bridge to a connection with I-4. The last six miles of the Seminole Expressway, completing the Eastern Beltway around Orlando, were fully opened to traffic in September 2002.



2001 The Suncoast Parkway is a 42-mile, four-lane, limited access toll facility extending north from the Veterans Expressway near Van Dyke Road in Hillsborough County through Pasco County to US 98 in northern Hernando County. The Veterans Expressway and Suncoast Parkway, as contiguous facilities, have the same SR 589 route designation.



1994 The Veterans Expressway is a four-lane, limited access toll facility that extends 15 miles from near SR 60/Courtney Campbell Causeway west of Tampa International Airport to SR 597/Dale Mabry Highway in northern Hillsborough County.



2006 The Daniel Webster Western Beltway, Part C is a 22-mile, four-lane, limited access toll facility constructed through a partnership between the Turnpike and CFX. The Turnpike owns and operates the southern most 11 miles of the facility extending from I-4 in Osceola County to Seidel Road in Orange County.



1996 The Southern Connector Extension is a six-mile, four-lane, limited access toll facility that connects the section of the Central Florida GreeneWay, operated by CFX, southwestward to I-4 in Osceola County.



2014 The I-4 Connector is a 1-mile, twelve-lane limited-access toll facility that connects Interstate 4 to the Selmon Expressway in Hillsborough County. The facility opened to traffic in January 2014.



2014 The Beachline East Expressway, a 22-mile eastern end of the SR 528, was acquired by the Turnpike from the Department on July 1, 2014. It extends east from SR 520 in Orange County for 6 miles into Brevard County where it splits into two branches. The 9-mile southeast branch continues as SR 528 to a connection with the Bennett Causeway at US 1, while the 7-mile northeast branch becomes SR 407 and extends to a connection with SR 405.

The Turnpike expansion program was authorized by the Florida Legislature in 1990 to meet the State's backlog of needed highway facilities. The Legislature set environmental and financial feasibility standards and allowed a higher toll rate-per-mile on the new projects by enacting Section 338.23 (1) of the Florida Statutes. To date, Florida's Turnpike has constructed seven expansion projects, and acquired two under this expansion program. The seven facilities constructed by the Turnpike are Seminole Expressway, Veterans Expressway, Southern Connector Extension, Polk Parkway, Suncoast Parkway, Western Beltway, Part C and I-4 Connector. The acquired facilities are Sawgrass Expressway and Beachline East Expressway which was purchased from the Department on July 1, 2014.

All expansion facilities utilize the coin method toll collection. However, with the exception of portions of Sawgrass Expressway and Beachline East Expressway, all of the expansion facilities utilize the "N minus 1" toll rate formula to establish the truck (3+ axle) toll schedule. In early FY 2000, the SunPass electronic payment system was introduced at the Sawgrass Expressway toll plazas. In the following year, SunPass was implemented on the five existing expansion projects.

**Expansion Projects Transactions and Toll Revenue
FY 2019 vs. FY 2018**

Component	Transactions			Toll Revenue		
	FY 2019	FY 2018	Change	FY 2019	FY 2018	Change
Sawgrass Expressway	96,557,752	93,614,269	3.1%	\$88,747,243	\$86,649,361	2.4%
Seminole Expressway	45,403,961	44,557,816	1.9	60,209,176	58,308,089	3.3
Veterans Expressway	70,158,259	65,237,706	7.5	56,582,436	53,669,917	5.4
Southern Connector Extension	18,827,765	17,931,814	5.0	15,148,027	14,408,420	5.1
Polk Parkway	38,121,014	37,279,042	2.3	36,848,010	35,481,659	3.9
Suncoast Parkway	36,810,480	34,976,017	5.2	29,213,968	27,620,057	5.8
Western Beltway, Part C	16,637,724	14,752,931	12.8	16,941,408	15,106,539	12.1
I-4 Connector	19,847,077	18,906,946	5.0	14,390,129	13,855,535	3.9
Beachline East Expressway	21,151,018	20,226,189	4.6	6,865,663	5,770,336	19.0
Total	363,515,050	347,482,730	4.6%	\$324,946,060	\$310,869,913	4.5%

Source: Turnpike Enterprise Finance Office.

Expansion Projects Summary
Quarterly Gross Toll Revenue Results
FY 2019 vs. FY 2018

Months	FY 2019	FY 2018	Variance	
			Amount	Change
July	\$26,019,051	\$25,287,572	\$731,479	2.9%
August	27,936,067	26,419,525	1,516,542	5.7
September	24,895,835	12,173,648	12,722,187	104.5
1st Quarter Subtotal	78,850,953	63,880,745	14,970,208	23.4
October	27,391,772	27,402,934	(11,162)	0.0
November	26,324,215	27,018,217	(694,002)	(2.6)
December	26,506,215	27,780,225	(1,274,010)	(4.6)
2nd Quarter Subtotal	80,222,202	82,201,376	(1,979,174)	(2.4)
January	27,083,993	27,239,244	(155,251)	(0.6)
February	25,774,777	26,215,894	(441,117)	(1.7)
March	29,232,469	29,603,972	(371,503)	(1.3)
3rd Quarter Subtotal	82,091,239	83,059,110	(967,871)	(1.2)
April	28,464,005	27,203,633	1,260,372	4.6
May	28,583,588	28,689,876	(106,288)	(0.4)
June	26,734,073	25,835,173	898,900	3.5
4th Quarter Subtotal	83,781,666	81,728,682	2,052,984	2.5
Annual Total	\$324,946,060	\$310,869,913	\$14,076,147	4.5%

Source: Turnpike Enterprise Finance Office.

**Sawgrass Expressway
Comparison of Daily Transactions by Month
FY 2019 vs. FY 2018**

Month	Average Daily Transactions (ADT)*		Change
	FY 2019	FY 2018	
July	246,034	233,680	5.3%
August	262,397	251,616	4.3
September	249,529	219,062	13.9
October	266,624	259,356	2.8
November	266,569	262,408	1.6
December	262,369	260,186	0.8
January	264,745	256,901	3.1
February	280,225	273,671	2.4
March	277,236	274,951	0.8
April	276,023	267,229	3.3
May	271,056	261,505	3.7
June	252,787	258,214	(2.1)
AAADT	264,542	256,477	3.1%

Source: Turnpike Enterprise Finance Office.
* ADT at tolled plaza locations.

**Sawgrass Expressway
Quarterly Revenue Results
FY 2019 vs. FY 2018**

Months	FY 2019	FY 2018	Variance	
			Amount	Change
July	\$7,124,995	\$7,013,067	\$111,928	1.6%
August	7,531,458	7,527,626	3,832	0.1
September	6,868,653	3,440,908	3,427,745	99.6
1st Quarter Subtotal	21,525,106	17,981,601	3,543,505	19.7
October	7,576,973	7,770,755	(193,782)	(2.5)
November	7,295,679	7,660,822	(365,143)	(4.8)
December	7,353,905	7,790,674	(436,769)	(5.6)
2nd Quarter Subtotal	22,226,557	23,222,251	(995,694)	(4.3)
January	7,490,679	7,676,410	(185,731)	(2.4)
February	7,137,052	7,324,097	(187,045)	(2.6)
March	7,884,177	8,082,380	(198,203)	(2.5)
3rd Quarter Subtotal	22,511,908	23,082,887	(570,979)	(2.5)
April	7,737,168	7,427,631	309,537	4.2
May	7,804,473	7,943,840	(139,367)	(1.8)
June	6,942,031	6,991,151	(49,120)	(0.7)
4th Quarter Subtotal	22,483,672	22,362,622	121,050	0.5
Annual Total	\$88,747,243	\$86,649,361	\$2,097,882	2.4%

Source: Turnpike Enterprise Finance Office.

**Seminole Expressway
Comparison of Daily Transactions by Month
FY 2019 vs. FY 2018**

Month	Average Daily Transactions (ADT)*		Change
	FY 2019	FY 2018	
July	120,216	113,330	6.1%
August	126,179	120,395	4.8
September	119,353	110,046	8.5
October	125,849	125,056	0.6
November	123,258	122,990	0.2
December	118,379	119,674	(1.1)
January	121,251	119,137	1.8
February	127,346	125,559	1.4
March	129,994	130,313	(0.2)
April	130,065	128,012	1.6
May	128,006	125,195	2.2
June	123,062	125,487	(1.9)
AAADT	124,394	122,076	1.9%

Source: Turnpike Enterprise Finance Office.

* ADT at tolled plaza locations.

**Seminole Expressway
Quarterly Revenue Results
FY 2019 vs. FY 2018**

Months	FY 2019	FY 2018	Variance	
			Amount	Change
July	\$4,843,555	\$4,716,958	\$126,597	2.7%
August	5,188,185	4,978,768	209,417	4.2
September	4,706,378	2,261,156	2,445,222	108.1
1st Quarter Subtotal	14,738,118	11,956,882	2,781,236	23.3
October	5,162,757	5,163,952	(1,195)	0.0
November	4,878,484	5,045,764	(167,280)	(3.3)
December	4,783,732	5,059,224	(275,492)	(5.4)
2nd Quarter Subtotal	14,824,973	15,268,940	(443,967)	(2.9)
January	4,967,838	5,055,818	(87,980)	(1.7)
February	4,722,876	4,762,798	(39,922)	(0.8)
March	5,405,061	5,561,924	(156,863)	(2.8)
3rd Quarter Subtotal	15,095,775	15,380,540	(284,765)	(1.9)
April	5,275,256	5,220,216	55,040	1.1
May	5,339,395	5,386,302	(46,907)	(0.9)
June	4,935,659	5,095,209	(159,550)	(3.1)
4th Quarter Subtotal	15,550,310	15,701,727	(151,417)	(1.0)
Annual Total	\$60,209,176	\$58,308,089	\$1,901,087	3.3%

Source: Turnpike Enterprise Finance Office.

**Veterans Expressway
Comparison of Daily Transactions by Month
FY 2019 vs. FY 2018**

Month	Average Daily Transactions (ADT)*		Change
	FY 2019	FY 2018	
July	178,781	163,276	9.5%
August	191,465	175,376	9.2
September	182,007	164,027	11.0
October	193,232	177,699	8.7
November	190,895	176,098	8.4
December	188,712	179,283	5.3
January	190,848	175,086	9.0
February	200,126	187,951	6.5
March	198,977	189,099	5.2
April	200,897	186,858	7.5
May	198,280	185,948	6.6
June	193,054	184,894	4.4
AA DT	192,214	178,733	7.5%

Source: Turnpike Enterprise Finance Office.

* ADT at tolled plaza locations.

**Veterans Expressway
Quarterly Revenue Results
FY 2019 vs. FY 2018**

Months	FY 2019	FY 2018	Variance	
			Amount	Change
July	\$4,544,468	\$4,416,428	\$128,040	2.9%
August	4,814,066	4,713,653	100,413	2.1
September	4,391,354	2,141,888	2,249,466	105.0
1st Quarter Subtotal	13,749,888	11,271,969	2,477,919	22.0
October	4,805,874	4,782,071	23,803	0.5
November	4,591,293	4,615,828	(24,535)	(0.5)
December	4,650,373	4,814,866	(164,493)	(3.4)
2nd Quarter Subtotal	14,047,540	14,212,765	(165,225)	(1.2)
January	4,746,268	4,699,313	46,955	1.0
February	4,484,750	4,513,154	(28,404)	(0.6)
March	4,979,798	4,932,858	46,940	1.0
3rd Quarter Subtotal	14,210,816	14,145,325	65,491	0.5
April	4,974,688	4,547,813	426,875	9.4
May	5,034,384	5,211,269	(176,885)	(3.4)
June	4,565,120	4,280,776	284,344	6.6
4th Quarter Subtotal	14,574,192	14,039,858	534,334	3.8
Annual Total	\$56,582,436	\$53,669,917	\$2,912,519	5.4%

Source: Turnpike Enterprise Finance Office.

**Southern Connector Extension
Comparison of Daily Transactions by Month
FY 2019 vs. FY 2018**

Month	Average Daily Transactions (ADT)*		Change
	FY 2019	FY 2018	
July	52,365	48,946	7.0%
August	49,612	46,216	7.3
September	45,405	41,718	8.8
October	49,186	47,571	3.4
November	50,815	48,151	5.5
December	51,895	50,237	3.3
January	50,577	48,266	4.8
February	53,732	50,883	5.6
March	57,636	54,859	5.1
April	53,980	51,905	4.0
May	52,102	48,959	6.4
June	51,757	51,906	(0.3)
AADT	51,583	49,128	5.0%

Source: Turnpike Enterprise Finance Office.
* ADT at tolled plaza locations.

**Southern Connector Extension
Quarterly Revenue Results
FY 2019 vs. FY 2018**

Months	FY 2019	FY 2018	Variance	
			Amount	Change
July	\$1,313,418	\$1,221,470	\$91,948	7.5%
August	1,237,240	1,170,768	66,472	5.7
September	1,099,607	534,807	564,800	105.6
1st Quarter Subtotal	3,650,265	2,927,045	723,220	24.7
October	1,224,345	1,204,442	19,903	1.7
November	1,221,175	1,206,248	14,927	1.2
December	1,271,176	1,297,603	(26,427)	(2.0)
2nd Quarter Subtotal	3,716,696	3,708,293	8,403	0.2
January	1,254,557	1,271,476	(16,919)	(1.3)
February	1,200,215	1,210,500	(10,285)	(0.8)
March	1,427,841	1,439,359	(11,518)	(0.8)
3rd Quarter Subtotal	3,882,613	3,921,335	(38,722)	(1.0)
April	1,324,981	1,294,719	30,262	2.3
May	1,316,291	1,298,405	17,886	1.4
June	1,257,181	1,258,623	(1,442)	(0.1)
4th Quarter Subtotal	3,898,453	3,851,747	46,706	1.2
Annual Total	\$15,148,027	\$14,408,420	\$739,607	5.1%

Source: Turnpike Enterprise Finance Office.

**Polk Parkway
Comparison of Daily Transactions by Month
FY 2019 vs. FY 2018**

Month	Average Daily Transactions (ADT)*		Change
	FY 2019	FY 2018	
July	96,744	91,169	6.1%
August	103,951	98,219	5.8
September	98,987	97,398	1.6
October	104,977	103,841	1.1
November	103,037	101,844	1.2
December	101,194	101,966	(0.8)
January	104,094	100,605	3.5
February	110,357	108,561	1.7
March	112,019	110,404	1.5
April	111,588	107,579	3.7
May	106,920	103,260	3.5
June	99,861	101,378	(1.5)
AAADT	104,441	102,134	2.3%

Source: Turnpike Enterprise Finance Office.

* ADT at tolled plaza locations.

**Polk Parkway
Quarterly Revenue Results
FY 2019 vs. FY 2018**

Months	FY 2019	FY 2018	Variance	
			Amount	Change
July	\$2,923,033	\$2,729,830	\$193,203	7.1%
August	3,107,326	2,912,822	194,504	6.7
September	2,843,470	1,381,078	1,462,392	105.9
1st Quarter Subtotal	8,873,829	7,023,730	1,850,099	26.3
October	3,114,287	3,099,291	14,996	0.5
November	2,977,025	3,087,766	(110,741)	(3.6)
December	2,999,462	3,191,328	(191,866)	(6.0)
2nd Quarter Subtotal	9,090,774	9,378,385	(287,611)	(3.1)
January	3,110,489	3,145,496	(35,007)	(1.1)
February	2,963,957	3,051,239	(87,282)	(2.9)
March	3,363,499	3,437,578	(74,079)	(2.2)
3rd Quarter Subtotal	9,437,945	9,634,313	(196,368)	(2.0)
April	3,278,565	3,171,998	106,567	3.4
May	3,248,663	3,260,111	(11,448)	(0.4)
June	2,918,234	3,013,122	(94,888)	(3.1)
4th Quarter Subtotal	9,445,462	9,445,231	231	0.0
Annual Total	\$36,848,010	\$35,481,659	\$1,366,351	3.9%

Source: Turnpike Enterprise Finance Office.

**Suncoast Parkway
Comparison of Daily Transactions by Month
FY 2019 vs. FY 2018**

Month	Average Daily Transactions (ADT)*		Change
	FY 2019	FY 2018	
July	96,304	87,695	9.8%
August	100,616	89,930	11.9
September	94,309	88,842	6.2
October	100,714	95,383	5.6
November	100,790	96,091	4.9
December	99,643	96,442	3.3
January	99,452	93,320	6.6
February	104,662	100,786	3.8
March	106,732	103,315	3.3
April	106,002	101,506	4.4
May	103,238	98,547	4.8
June	97,974	98,575	(0.6)
AAADT	100,851	95,825	5.2%

Source: Turnpike Enterprise Finance Office.
* ADT at tolled plaza locations.

**Suncoast Parkway
Quarterly Revenue Results
FY 2019 vs. FY 2018**

Months	FY 2019	FY 2018	Variance	
			Amount	Change
July	\$2,289,074	\$2,264,004	\$25,070	1.1%
August	2,516,768	2,263,295	253,473	11.2
September	2,248,062	1,085,859	1,162,203	107.0
1st Quarter Subtotal	7,053,904	5,613,158	1,440,746	25.7
October	2,466,916	2,438,751	28,165	1.2
November	2,398,725	2,447,861	(49,136)	(2.0)
December	2,448,573	2,524,753	(76,180)	(3.0)
2nd Quarter Subtotal	7,314,214	7,411,365	(97,151)	(1.3)
January	2,436,027	2,352,542	83,485	3.5
February	2,306,754	2,368,808	(62,054)	(2.6)
March	2,648,469	2,665,378	(16,909)	(0.6)
3rd Quarter Subtotal	7,391,250	7,386,728	4,522	0.1
April	2,564,365	2,452,143	112,222	4.6
May	2,556,760	2,316,027	240,733	10.4
June	2,333,475	2,440,636	(107,161)	(4.4)
4th Quarter Subtotal	7,454,600	7,208,806	245,794	3.4
Annual Total	\$29,213,968	\$27,620,057	\$1,593,911	5.8%

Source: Turnpike Enterprise Finance Office.

Western Beltway, Part C
Comparison of Daily Transactions by Month
FY 2019 vs. FY 2018

Month	Average Daily Transactions (ADT)*		Change
	FY 2019	FY 2018	
July	46,613	40,246	15.8%
August	43,467	36,680	18.5
September	38,550	33,773	14.1
October	42,257	38,035	11.1
November	44,064	38,080	15.7
December	44,009	40,076	9.8
January	43,687	38,746	12.8
February	47,862	42,717	12.0
March	52,641	47,227	11.5
April	49,137	43,504	12.9
May	46,565	41,205	13.0
June	48,289	44,916	7.5
AADT	45,583	40,419	12.8%

Source: Turnpike Enterprise Finance Office.
* ADT at tolled plaza locations.

**Western Beltway, Part C
Quarterly Revenue Results
FY 2019 vs. FY 2018**

Months	FY 2019	FY 2018	Variance	
			Amount	Change
July	\$1,479,690	\$1,273,181	\$206,509	16.2%
August	1,373,943	1,180,992	192,951	16.3
September	1,176,762	539,625	637,137	118.1
1st Quarter Subtotal	4,030,395	2,993,798	1,036,597	34.6
October	1,337,170	1,230,974	106,196	8.6
November	1,340,960	1,244,735	96,225	7.7
December	1,365,002	1,333,847	31,155	2.3
2nd Quarter Subtotal	4,043,132	3,809,556	233,576	6.1
January	1,375,235	1,291,765	83,470	6.5
February	1,358,889	1,290,458	68,431	5.3
March	1,680,403	1,568,430	111,973	7.1
3rd Quarter Subtotal	4,414,527	4,150,653	263,874	6.4
April	1,510,021	1,375,267	134,754	9.8
May	1,480,491	1,390,451	90,040	6.5
June	1,462,842	1,386,814	76,028	5.5
4th Quarter Subtotal	4,453,354	4,152,532	300,822	7.2
Annual Total	\$16,941,408	\$15,106,539	\$1,834,869	12.1%

Source: Turnpike Enterprise Finance Office.

**I-4 Connector
Comparison of Daily Transactions by Month
FY 2019 vs. 2018**

Month	Average Daily Transactions (ADT)*		Change
	FY 2019	FY 2018	
July	51,139	47,289	8.1%
August	54,098	49,775	8.7
September	51,881	48,491	7.0
October	55,005	52,209	5.4
November	54,554	51,354	6.2
December	53,656	51,573	4.0
January	54,549	51,495	5.9
February	56,174	54,461	3.1
March	56,408	55,419	1.8
April	55,861	53,774	3.9
May	55,297	52,947	4.4
June	54,023	53,054	1.8
AA DT	54,376	51,800	5.0%

Source: Turnpike Enterprise Finance Office.

* ADT at tolled plaza locations.

**I-4 Connector
Quarterly Revenue Results
FY 2019 vs. FY 2018**

Months	FY 2019	FY 2018	Variance	
			Amount	Change
July	\$1,160,950	\$1,142,034	\$18,916	1.7%
August	1,231,305	1,204,365	26,940	2.2
September	1,115,373	572,201	543,172	94.9
1st Quarter Subtotal	3,507,628	2,918,600	589,028	20.2
October	1,224,461	1,262,306	(37,845)	(3.0)
November	1,169,766	1,192,365	(22,599)	(1.9)
December	1,172,980	1,226,119	(53,139)	(4.3)
2nd Quarter Subtotal	3,567,207	3,680,790	(113,583)	(3.1)
January	1,212,938	1,234,920	(21,982)	(1.8)
February	1,137,659	1,176,890	(39,231)	(3.3)
March	1,276,808	1,296,631	(19,823)	(1.5)
3rd Quarter Subtotal	3,627,405	3,708,441	(81,036)	(2.2)
April	1,252,983	1,156,669	96,314	8.3
May	1,275,676	1,357,173	(81,497)	(6.0)
June	1,159,230	1,033,862	125,368	12.1
4th Quarter Subtotal	3,687,889	3,547,704	140,185	4.0
Annual Total	\$14,390,129	\$13,855,535	\$534,594	3.9%

Source: Turnpike Enterprise Finance Office.

**Beachline East Expressway
Comparison of Daily Transactions by Month
FY 2019 vs. FY 2018**

Month	Average Daily Transactions (ADT)*		Change
	FY 2019	FY 2018	
July	59,235	57,139	3.7%
August	57,604	53,543	7.6
September	54,242	46,649	16.3
October	53,607	52,589	1.9
November	56,383	54,672	3.1
December	55,284	54,941	0.6
January	53,998	52,211	3.4
February	58,481	58,107	0.6
March	65,009	62,070	4.7
April	61,016	59,280	2.9
May	60,867	55,062	10.5
June	59,686	58,898	1.3
AADT	57,948	55,414	4.6%

Source: Turnpike Enterprise Finance Office.

* ADT at tolled plaza locations (S.R. 520 ramps and Central Florida Expressway Authority owned Dallas Mainline Toll Plaza)

**Beachline East Expressway
Quarterly Revenue Results*
FY 2019 vs. FY 2018**

Months	FY 2019	FY 2018	Variance	
			Amount	Change
July	\$775,047	\$510,600	\$264,447	51.8%
August	636,155	467,236	168,919	36.2
September	493,192	216,124	277,068	128.2
1st Quarter Subtotal	1,904,394	1,193,960	710,434	59.5
October	529,544	450,391	79,153	17.6
November	498,382	516,827	(18,445)	(3.6)
December	509,533	541,810	(32,277)	(6.0)
2nd Quarter Subtotal	1,537,459	1,509,028	28,431	1.9
January	541,705	511,504	30,201	5.9
February	511,272	517,950	(6,678)	(1.3)
March	625,963	619,434	6,529	1.1
3rd Quarter Subtotal	1,678,940	1,648,888	30,052	1.8
April	602,712	557,178	45,534	8.2
May	581,661	526,302	55,359	10.5
June	560,497	334,980	225,517	67.3
4th Quarter Subtotal	1,744,870	1,418,460	326,410	23.0
Annual Total	\$6,865,663	\$5,770,336	\$1,095,327	19.0%

Source: Turnpike Enterprise Finance Office.

* Revenue includes tolls collected at S.R 520 ramps and Turnpike's portion of tolls collected at Central Florida Expressway Authority owned Dallas Mainline Toll Plaza.

**Expansion Projects
Seasonal Traffic Variation
FY 2019**

Month	Seasonal Factor								
	Sawgrass Expressway	Seminole Expressway	Veterans Expressway	Southern Connector Extension	Polk Parkway	Suncoast Parkway	Western Beltway, Part C	I-4 Connector	Beachline East Expressway
July 2018	0.93	0.97	0.93	1.02	0.93	0.95	1.02	0.94	1.02
August	0.99	1.01	1.00	0.96	1.00	1.00	0.95	0.99	0.99
September	0.94	0.96	0.95	0.88	0.95	0.94	0.85	0.95	0.94
October	1.01	1.01	1.01	0.95	1.01	1.00	0.93	1.01	0.93
November	1.01	0.99	0.99	0.99	0.99	1.00	0.97	1.00	0.97
December	0.99	0.95	0.98	1.01	0.97	0.99	0.97	0.99	0.95
January 2019	1.00	0.97	0.99	0.98	1.00	0.99	0.96	1.00	0.93
February	1.06	1.02	1.04	1.04	1.06	1.04	1.05	1.03	1.01
March	1.05	1.05	1.04	1.12	1.07	1.06	1.15	1.04	1.12
April	1.04	1.05	1.05	1.05	1.07	1.05	1.08	1.03	1.05
May	1.02	1.03	1.03	1.01	1.02	1.02	1.02	1.02	1.05
June	0.96	0.99	1.00	1.00	0.96	0.97	1.06	0.99	1.03

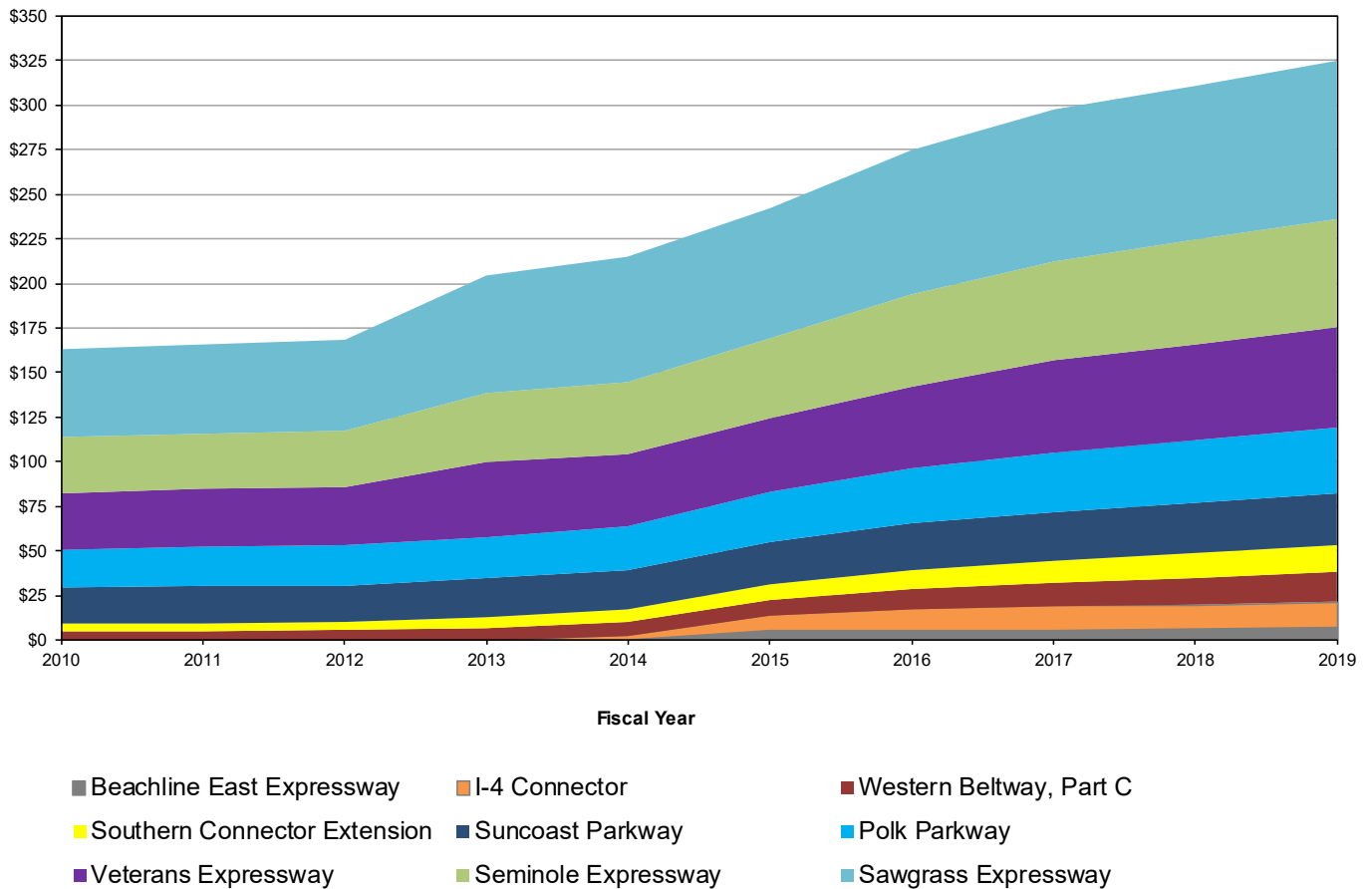
Source: Turnpike Enterprise Finance Office.

Expansion Projects
FY 2018 Toll Revenue Forecast (\$000)
FY 2020 through FY 2030

Fiscal Year	Sawgrass Expressway	Seminole Expressway	Veterans Expressway	Southern Connector	Polk Parkway	Suncoast Parkway	Western Beltway, C	I-4 Connector	Beachline East	First Coast Expressway	Total
2020	\$93,129	\$59,579	\$61,993	\$15,526	\$36,989	\$29,807	\$17,525	\$16,019	\$6,008	\$6,633	\$343,208
2021	98,846	62,301	65,993	16,487	38,315	29,403	18,693	17,234	6,219	8,296	361,787
2022	102,126	64,033	68,992	17,138	37,709	30,224	19,489	17,982	6,357	9,393	373,443
2023	105,515	67,362	71,987	18,348	38,725	31,188	20,990	18,617	7,078	10,443	390,253
2024	108,804	69,151	74,894	18,939	39,939	32,291	21,789	19,275	7,226	11,451	403,759
2025	111,975	70,934	77,537	19,530	40,996	33,044	22,591	19,956	7,376	12,451	416,390
2026	115,016	72,798	79,880	20,125	42,074	33,943	23,405	20,660	7,523	13,449	428,873
2027	121,540	74,714	82,051	20,702	43,174	34,819	24,222	21,347	7,673	14,431	444,673
2028	124,912	78,092	84,198	21,862	44,297	35,750	25,686	22,059	8,376	15,382	460,614
2029	128,248	80,104	86,316	22,445	45,445	36,672	26,546	22,793	8,539	16,349	473,457
2030	131,533	82,090	88,487	23,018	46,621	37,632	27,408	23,551	8,676	17,293	486,309

Note: : FY 2020 revenue forecast reflects revenue loss from Hurricane Dorian toll suspension for approximately 4.5 days starting September 1, 2019. The above revenue forecasts reflect the implementation of All-Electronic Tolling on the Suncoast Parkway in FY 2021 and Polk Parkway in FY 2022. The Sawgrass Expressway forecast includes revenues from additional lanes on most sections of the facility in FY 2027. Additionally, the forecasts reflect a new interchange on Suncoast Parkway at Ridge Road opening in the second half of FY 2023, and the widening impact on Polk Parkway from CR 546 to north of Eastern Plaza and a new interchange at Braddock Road in FY 2024. The First Coast Expressway opened to traffic in mid-July 2019 (FY 2020)

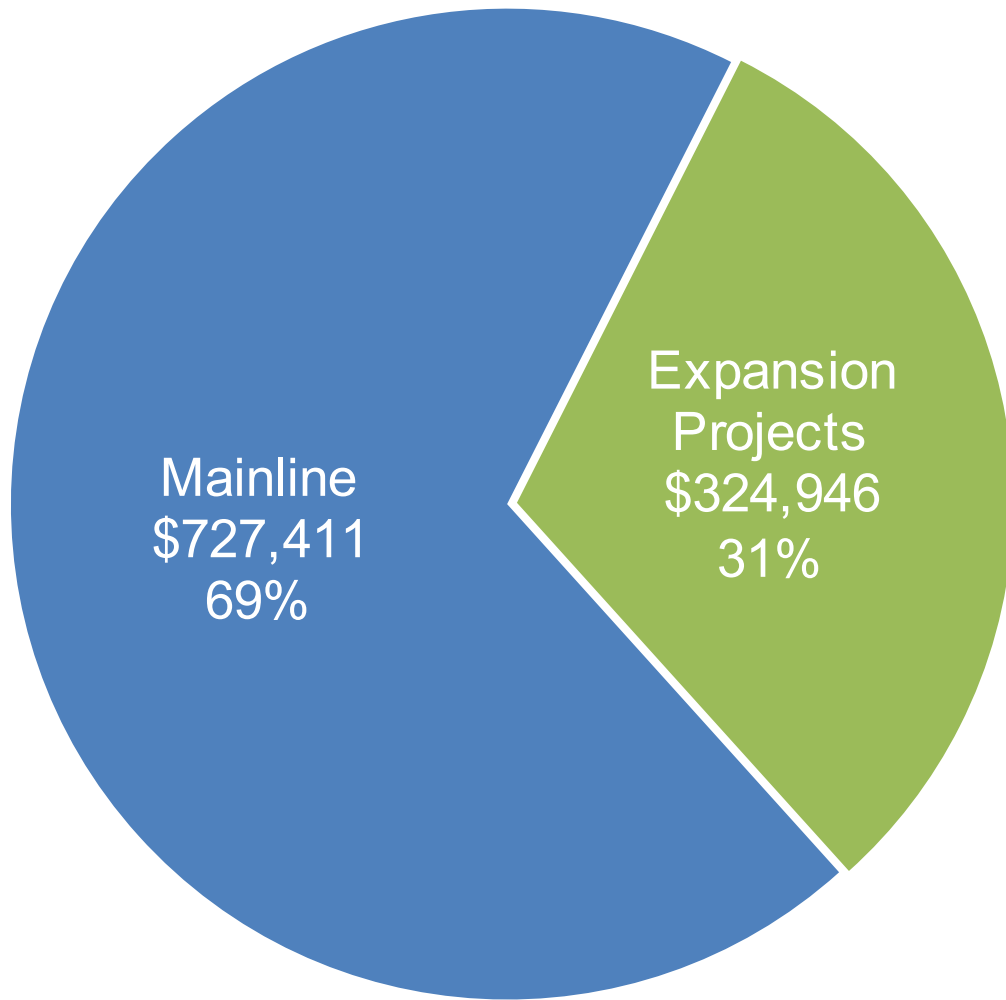
Annual Toll Revenue for Expansion Projects FY 2010 through FY 2019 (In Millions)



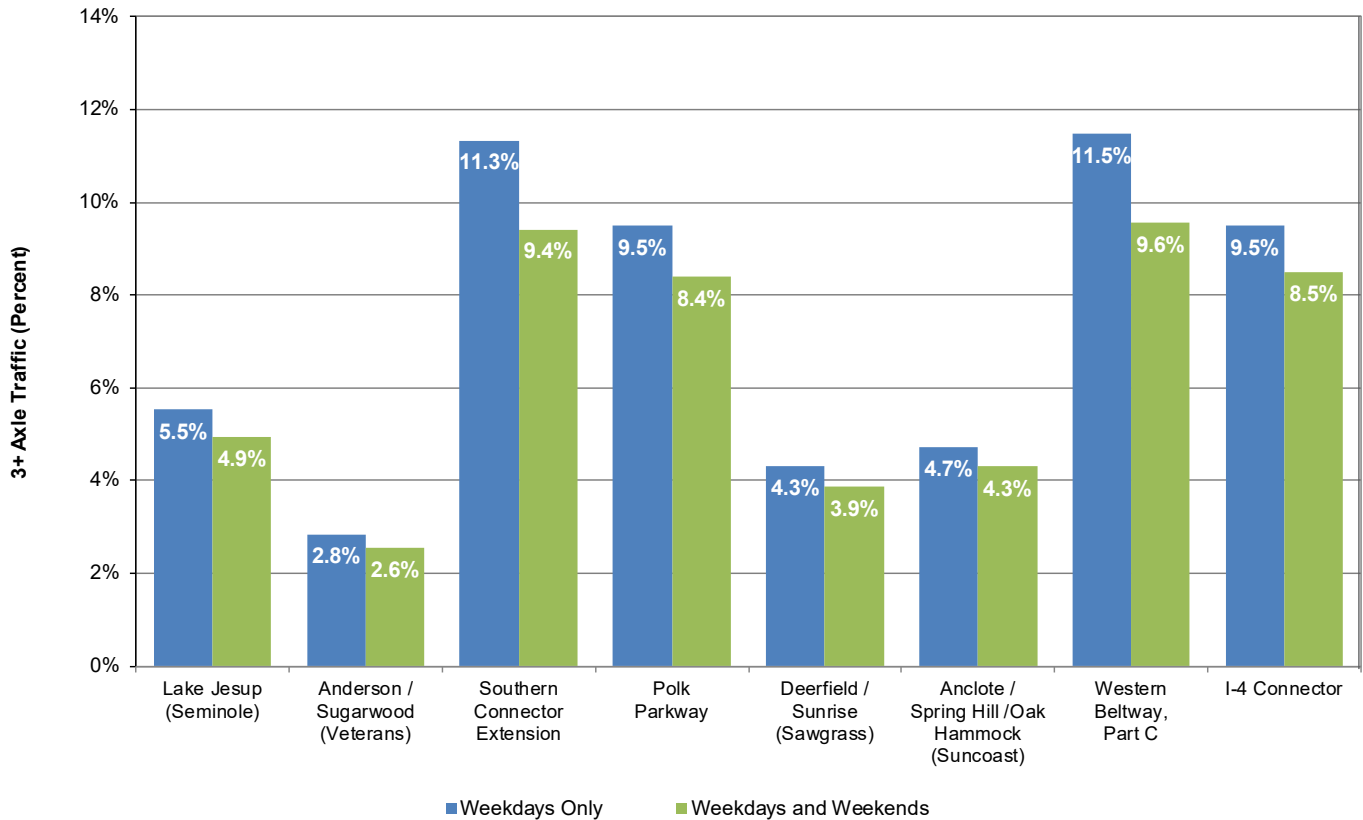
Source: Turnpike Enterprise Finance Office.

This graph shows the historical annual toll revenues on the expansion projects for the past 10 years. Typically, these expansion projects have experienced a higher growth rate than the Mainline facilities due to ramp-up and increased levels of land-use in the respective corridors. Ramp-up reflects motorists' increasing acceptance of the toll facility's value in relation to time savings and convenience. Toll revenue increase in FY 2019 is attributed to systemwide traffic growth and a full year impact of toll rate indexing.

**Florida's Turnpike System
Gross Toll Revenue (\$000)
FY 2019**



Expansion Projects 3+ Axle Vehicles in the Vehicle Mix



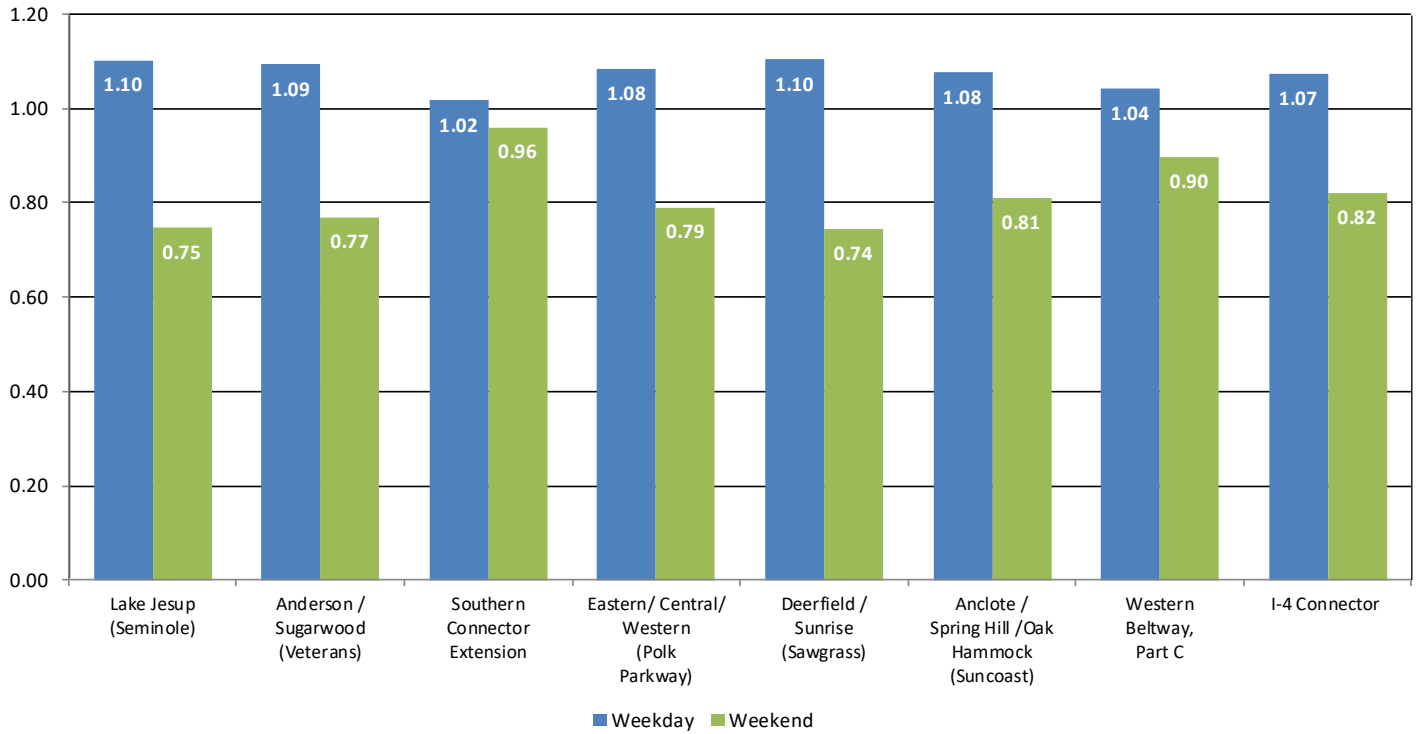
Source: Data obtained from Turnpike Enterprise Finance Office for the week beginning November 5, 2018.

There is some variation in the characteristics of 3+ axle vehicles (generally representing trucks and recreational vehicles) versus 2-axle passenger cars. The percentage of 3+ axle traffic is shown in the graph above for each expansion project during a typical seven-day week for which there were no unusual events. The percent vehicle mix was calculated for weekdays only and for all seven days of the week combined.

In general, a higher vehicle mix of 3+ axle vehicles is observed on all eight facilities during weekdays since truck traffic is usually higher during the week than on the weekends. As in prior years, higher than average percentages of 3+ axle vehicles are reported on Southern Connector Extension, Polk Parkway, Western Beltway, Part C and the I-4 Connector. Commercial traffic on these facilities ranges from 9.5 percent on Polk Parkway and I-4 Connector to 11.5 percent on Western Beltway, Part C. The Southern Connector Extension provides access to I-4 from the Metro Orlando industrial areas near the Orange County and Osceola County line. The high truck traffic on the Polk Parkway is partly attributed to distribution centers in the Lakeland area, such as Publix and Rooms To Go, and the opening of additional commercial centers in the corridor. The Western Beltway, Part C provides a preferred alternate route to I-4 for truck traffic traveling between Leesburg and Apopka. The exclusive truck lanes on the I-4 Connector provide direct access to and from the Port of Tampa.

On the other hand, the Anderson / Sugarwood toll plazas on the Veterans Expressway has the lowest percentage of 3+ axle vehicles at 2.8 percent on weekdays, reflecting the high commuter area served by this facility.

Expansion Projects Weekday vs. Weekend Factors

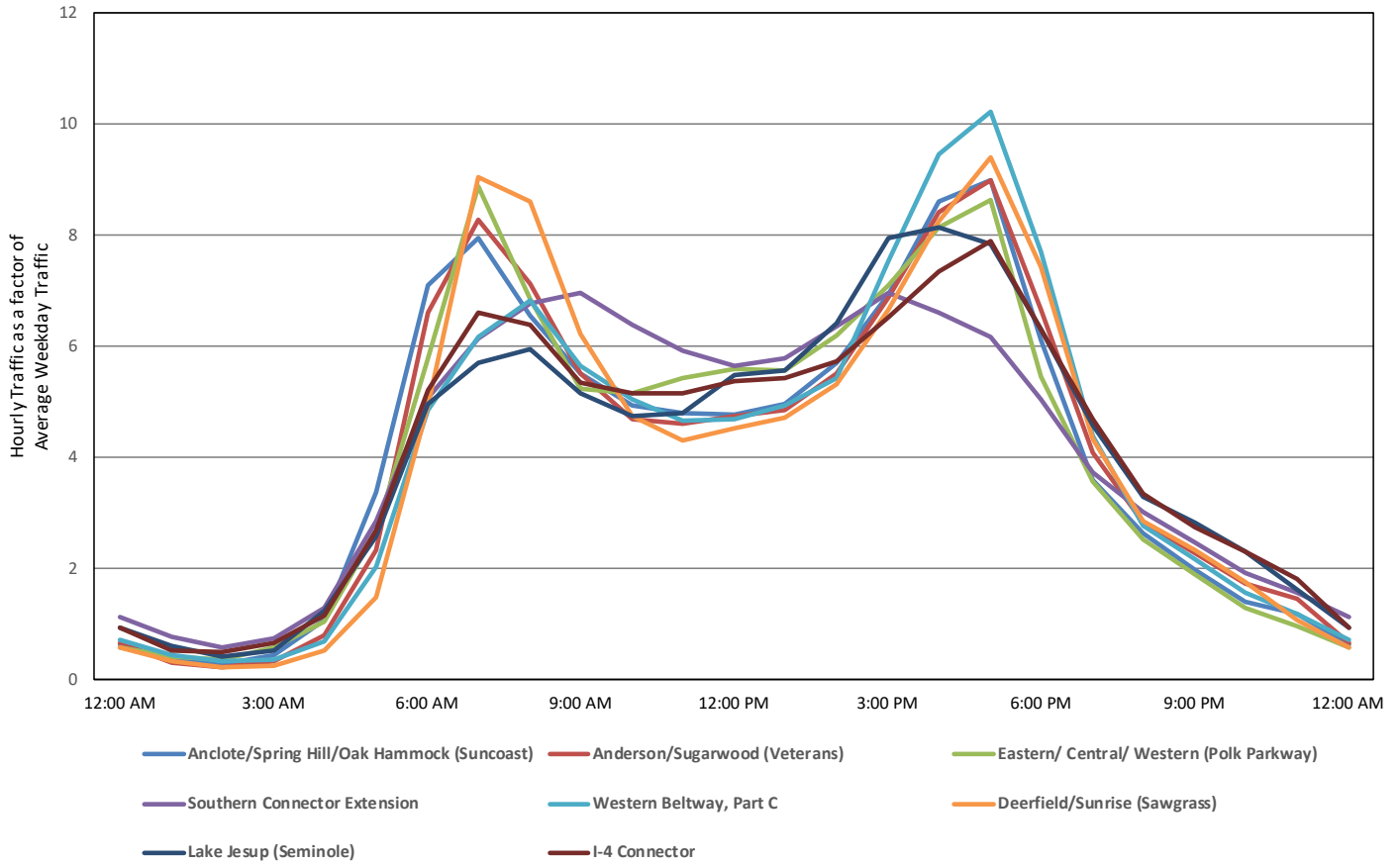


Source: Data obtained from Turnpike Enterprise Finance Office for the week beginning November 5, 2018.
 Note: A factor of 1.0 represents a typical average day over the 7-day period.

The daily volumes are grouped by weekdays (Monday through Friday) and weekends (Saturday and Sunday). With an average day in a seven-day week representing the baseline for comparison between weekdays and weekends, a weekday/ weekend factor is calculated for a representative group of toll plazas on the expansion projects. These factors are shown in the graph above.

It is notable that weekday traffic on all facilities that primarily serve commuter traffic (i.e., Seminole, Veterans, Polk, Sawgrass and Western Beltway, Part C) is between 4 and 10 percent higher than the average for the week. Conversely, the weekend traffic at these five facilities is 10 to 26 percent lower than the weekly average. The high level of weekend traffic is characteristic of a facility that serves an area of major tourist attractions and recreational trips. The higher volumes of weekday traffic (i.e. commuter traffic) on the Western Beltway, Part C is due in part to easy access provided to Disney's Celebration area by this facility as an alternative to the congested I-4.

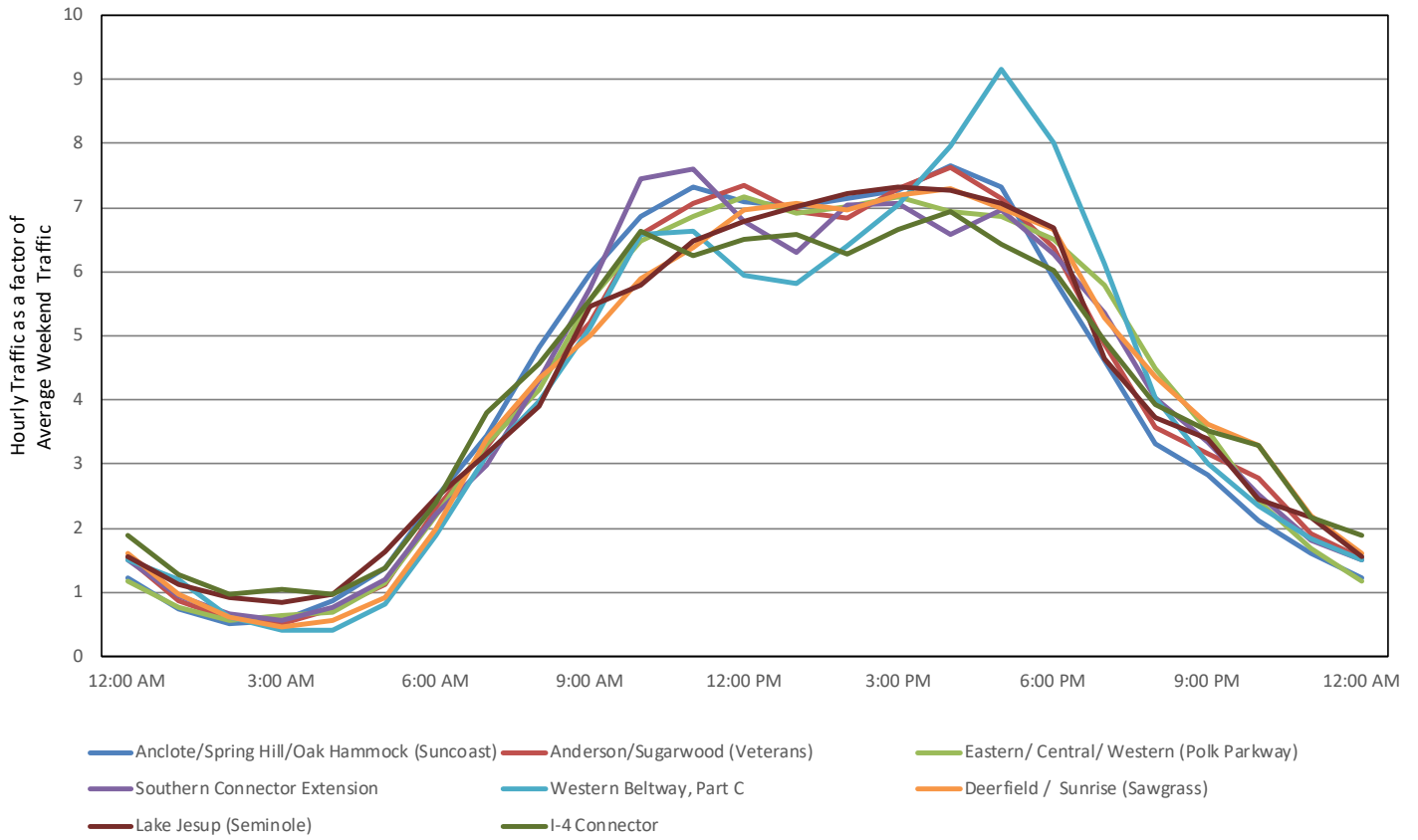
Expansion Projects Average Hourly Weekday Factors



Source: Data obtained from Turnpike Enterprise Finance Office for the 5-day period beginning November 5, 2018.

The weekday hourly factors at select toll plazas during FY 2019 along the Turnpike's expansion projects are shown in the graph above. The results show typical morning and evening peak periods, with the most noticeable peaks evident on the commuter facilities. The peak periods on the Southern Connector Extension are slightly less defined because of the combination of commuters and tourists that use the facility during a typical day. As in prior years, the Sawgrass and Western Beltway, Part C have the highest peak hour ratios.

Expansion Projects Average Hourly Weekend Factors



Source: Data obtained from Turnpike Enterprise Finance Office for the 2-day period beginning Saturday November 10, 2018.

This graph depicts the FY 2019 hourly factors on the same facilities shown in previous graph for weekends. Hourly weekend variations on all of these facilities show single daily peaks and plateaus that extend between the late morning hours as customers travel to their destinations and early evening hours as they return home.