

## Expansion Projects Description



**1990** The Sawgrass Expressway is a 23-mile, four-lane, limited access toll facility located in northern Broward County. It begins with a connection at I-595 and I-75, extending north then east to Powerline Road between the Turnpike Mainline and I-95.



**1999** The Polk Parkway is a 25-mile, two-lane and four-lane, limited access toll facility in Polk County that provides a beltway around the western, southern and eastern perimeters of the City of Lakeland.



**1994** The Seminole Expressway is an 18-mile, four-lane, limited access toll facility that extends CFX's Central Florida GreeneWay (SR 417) north from the Orange County line, across the 2.1-mile Lake Jesup Bridge to a connection with I-4. The last six miles of the Seminole Expressway, completing the Eastern Beltway around Orlando, were fully opened to traffic in September 2002.



**2001** The Suncoast Parkway is a 42-mile, four-lane, limited access toll facility extending north from the Veterans Expressway near Van Dyke Road in Hillsborough County through Pasco County to US 98 in northern Hernando County. The Veterans Expressway and Suncoast Parkway, as contiguous facilities, have the same SR 589 route designation.



**1994** The Veterans Expressway is a four-lane, limited access toll facility that extends 15 miles from near SR 60/Courtney Campbell Causeway west of Tampa International Airport to SR 597/Dale Mabry Highway in northern Hillsborough County.



**2006** The Daniel Webster Western Beltway, Part C is a 22-mile, four-lane, limited access toll facility constructed through a partnership between the Turnpike and CFX. The Turnpike owns and operates the southern most 11 miles of the facility extending from I-4 in Osceola County to Seidel Road in Orange County.



**1996** The Southern Connector Extension is a six-mile, four-lane, limited access toll facility that connects the section of the Central Florida GreeneWay, operated by CFX, southwestward to I-4 in Osceola County.



**2014** The I-4 Connector is a 1-mile, twelve-lane limited-access toll facility that connects Interstate 4 to the Selmon Expressway in Hillsborough County. The facility opened to traffic in January 2014.



**2014** The Beachline East Expressway, a 22-mile eastern end of the SR 528, was acquired by the Turnpike from the Department on July 1, 2014. It extends east from SR 520 in Orange County for 6 miles into Brevard County where it splits into two branches. The 9-mile southeast branch continues as SR 528 to a connection with the Bennett Causeway at US 1, while the 7-mile northeast branch becomes SR 407 and extends to a connection with SR 405.

The Turnpike expansion program was authorized by the Florida Legislature in 1990 to meet the State's backlog of needed highway facilities. The Legislature set environmental and financial feasibility standards and allowed a higher toll rate-per-mile on the new projects by enacting Section 338.23 (1) of the Florida Statutes. To date, Florida's Turnpike has constructed seven expansion projects, and acquired two under this expansion program. The seven facilities constructed by the Turnpike are Seminole Expressway, Veterans Expressway, Southern Connector Extension, Polk Parkway, Suncoast Parkway, Western Beltway, Part C and I-4 Connector. The acquired facilities are Sawgrass Expressway and Beachline East Expressway which was purchased from the Department on July 1, 2014.

All expansion facilities utilize the coin method toll collection. However, with the exception of portions of Sawgrass Expressway and Beachline East Expressway, all of the expansion facilities utilize the "N minus 1" toll rate formula to establish the truck (3+ axle) toll schedule. In early FY 2000, the SunPass electronic payment system was introduced at the Sawgrass Expressway toll plazas. In the following year, SunPass was implemented on the five existing expansion projects.

**Expansion Projects Transactions and Toll Revenue  
FY 2017 vs. FY 2016**

Component	Transactions			Toll Revenue		
	FY 2017	FY 2016	Change	FY 2017	FY 2016	Change
Sawgrass Expressway	89,550,880	85,632,762	4.6%	\$85,416,404	\$80,510,430	6.1%
Seminole Expressway	42,067,016	39,592,457	6.3	55,302,510	51,712,593	6.9
Veterans Expressway	60,320,819	55,303,655	9.1	51,645,700	45,720,433	13.0
Southern Connector Extension	15,803,457	13,602,570	16.2	12,625,917	10,917,202	15.7
Polk Parkway	35,441,903	33,315,767	6.4	33,595,521	31,358,911	7.1
Suncoast Parkway	32,895,349	31,349,180	4.9	26,993,593	25,708,765	5.0
Western Beltway, Part C	12,487,850	10,726,702	16.4	12,929,898	11,032,331	17.2
I-4 Connector	17,577,371	16,283,352	7.9	13,447,930	12,070,700	11.4
Beachline East Expressway	19,591,881	18,722,549	4.6	5,602,545	5,512,180	1.6
<b>Total</b>	<b>325,736,526</b>	<b>304,528,994</b>	<b>7.0%</b>	<b>\$297,560,018</b>	<b>\$274,543,545</b>	<b>8.4%</b>

Source: Turnpike Enterprise Finance Office.

**Expansion Projects Summary  
Quarterly Gross Toll Revenue Results  
FY 2017 vs. FY 2016**

Months	FY 2017	FY 2016	Variance	
			Amount	Change
July	\$23,918,898	\$21,906,060	\$2,012,838	9.2%
August	24,486,895	21,861,992	2,624,903	12.0
September	23,307,826	21,159,631	2,148,195	10.2
1st Quarter Subtotal	71,713,619	64,927,683	6,785,936	10.5
October	22,617,295	22,963,505	(346,210)	(1.5)
November	24,364,744	21,897,323	2,467,421	11.3
December	25,637,821	23,564,230	2,073,591	8.8
2nd Quarter Subtotal	72,619,860	68,425,058	4,194,802	6.1
January	24,964,522	22,422,730	2,541,792	11.3
February	23,972,129	22,885,608	1,086,521	4.7
March	27,627,059	25,300,420	2,326,639	9.2
3rd Quarter Subtotal	76,563,710	70,608,758	5,954,952	8.4
April	25,730,062	23,831,788	1,898,274	8.0
May	26,246,040	23,754,331	2,491,709	10.5
June	24,686,727	22,995,927	1,690,800	7.4
4th Quarter Subtotal	76,662,829	70,582,046	6,080,783	8.6
<b>Annual Total</b>	<b>\$297,560,018</b>	<b>\$274,543,545</b>	<b>\$23,016,473</b>	<b>8.4%</b>

Source: Turnpike Enterprise Finance Office.

**Sawgrass Expressway  
Comparison of Daily Transactions by Month  
FY 2017 vs. FY 2016**

Month	Average Daily Transactions (ADT)*		Change
	FY 2017	FY 2016	
July	224,660	216,858	3.6%
August	237,035	218,676	8.4
September	237,188	220,667	7.5
October	230,870	231,169	(0.1)
November	246,396	229,402	7.4
December	249,724	236,569	5.6
January	243,652	232,326	4.9
February	257,854	250,639	2.9
March	266,151	250,819	6.1
April	251,349	246,440	2.0
May	254,466	238,437	6.7
June	245,992	236,617	4.0
<b>AAADT</b>	<b>245,345</b>	<b>233,969</b>	<b>4.9%</b>

Source: Turnpike Enterprise Finance Office.

\* ADT at tolled plaza locations.

**Sawgrass Expressway  
Quarterly Revenue Results  
FY 2017 vs. FY 2016**

Months	FY 2017	FY 2016	Variance	
			Amount	Change
July	\$6,799,724	\$6,386,351	\$413,373	6.5%
August	7,154,045	6,436,954	717,091	11.1
September	6,882,603	6,201,442	681,161	11.0
1st Quarter Subtotal	20,836,372	19,024,747	1,811,625	9.5
October	6,294,401	6,774,223	(479,822)	(7.1)
November	7,161,920	6,495,675	666,245	10.3
December	7,464,262	6,894,243	570,019	8.3
2nd Quarter Subtotal	20,920,583	20,164,141	756,442	3.8
January	7,270,930	6,750,791	520,139	7.7
February	6,926,770	6,815,810	110,960	1.6
March	7,888,379	7,304,789	583,590	8.0
3rd Quarter Subtotal	22,086,079	20,871,390	1,214,689	5.8
April	7,175,061	6,938,476	236,585	3.4
May	7,464,841	6,903,511	561,330	8.1
June	6,933,468	6,608,165	325,303	4.9
4th Quarter Subtotal	21,573,370	20,450,152	1,123,218	5.5
<b>Annual Total</b>	<b>\$85,416,404</b>	<b>\$80,510,430</b>	<b>\$4,905,974</b>	<b>6.1%</b>

Source: Turnpike Enterprise Finance Office.

**Seminole Expressway  
Comparison of Daily Transactions by Month  
FY 2017 vs. FY 2016**

Month	Average Daily Transactions (ADT)*		Change
	FY 2017	FY 2016	
July	107,101	101,957	5.0%
August	112,403	101,829	10.4
September	110,989	103,329	7.4
October	109,089	108,775	0.3
November	114,280	104,574	9.3
December	115,306	107,946	6.8
January	111,858	102,240	9.4
February	118,101	112,744	4.8
March	123,730	116,937	5.8
April	121,452	114,100	6.4
May	120,702	112,190	7.6
June	118,423	111,824	5.9
<b>AAADT</b>	<b>115,252</b>	<b>108,176</b>	<b>6.5%</b>

Source: Turnpike Enterprise Finance Office.

\* ADT at tolled plaza locations.

**Seminole Expressway  
Quarterly Revenue Results  
FY 2017 vs. FY 2016**

Months	FY 2017	FY 2016	Variance	
			Amount	Change
July	\$4,431,054	\$4,177,267	\$253,787	6.1%
August	4,630,512	4,132,244	498,268	12.1
September	4,387,886	4,026,264	361,622	9.0
1st Quarter Subtotal	13,449,452	12,335,775	1,113,677	9.0
October	4,113,621	4,380,225	(266,604)	(6.1)
November	4,519,581	4,060,918	458,663	11.3
December	4,673,773	4,338,623	335,150	7.7
2nd Quarter Subtotal	13,306,975	12,779,766	527,209	4.1
January	4,570,500	4,124,872	445,628	10.8
February	4,424,200	4,286,853	137,347	3.2
March	5,106,968	4,781,742	325,226	6.8
3rd Quarter Subtotal	14,101,668	13,193,467	908,201	6.9
April	4,815,718	4,479,165	336,553	7.5
May	4,936,285	4,533,534	402,751	8.9
June	4,692,412	4,390,886	301,526	6.9
4th Quarter Subtotal	14,444,415	13,403,585	1,040,830	7.8
<b>Annual Total</b>	<b>\$55,302,510</b>	<b>\$51,712,593</b>	<b>\$3,589,917</b>	<b>6.9%</b>

Source: Turnpike Enterprise Finance Office.

**Veterans Expressway  
Comparison of Daily Transactions by Month  
FY 2017 vs. FY 2016**

Month	Average Daily Transactions (ADT)*		Change
	FY 2017	FY 2016	
July	151,133	139,768	8.1%
August	156,240	144,822	7.9
September	154,942	146,623	5.7
October	159,043	151,862	4.7
November	162,375	147,779	9.9
December	167,849	156,286	7.4
January	163,884	145,183	12.9
February	172,610	155,380	11.1
March	177,001	158,344	11.8
April	173,232	158,375	9.4
May	174,125	154,125	13.0
June	171,459	155,075	10.6
<b>AA DT</b>	<b>165,263</b>	<b>151,103</b>	<b>9.4%</b>

Source: Turnpike Enterprise Finance Office.

\* ADT at tolled plaza locations.



**Veterans Expressway  
Quarterly Revenue Results  
FY 2017 vs. FY 2016**

Months	FY 2017	FY 2016	Variance	
			Amount	Change
July	\$4,054,974	\$3,603,728	\$451,246	12.5%
August	4,161,947	3,702,086	459,861	12.4
September	4,003,231	3,659,152	344,079	9.4
1st Quarter Subtotal	12,220,152	10,964,966	1,255,186	11.4
October	4,244,428	3,907,161	337,267	8.6
November	4,208,932	3,685,516	523,416	14.2
December	4,486,305	4,022,594	463,711	11.5
2nd Quarter Subtotal	12,939,665	11,615,271	1,324,394	11.4
January	4,372,472	3,725,245	647,227	17.4
February	4,160,897	3,724,460	436,437	11.7
March	4,640,551	4,061,484	579,067	14.3
3rd Quarter Subtotal	13,173,920	11,511,189	1,662,731	14.4
April	4,422,209	3,925,379	496,830	12.7
May	4,574,762	3,908,376	666,386	17.1
June	4,314,992	3,795,252	519,740	13.7
4th Quarter Subtotal	13,311,963	11,629,007	1,682,956	14.5
<b>Annual Total</b>	<b>\$51,645,700</b>	<b>\$45,720,433</b>	<b>\$5,925,267</b>	<b>13.0%</b>

Source: Turnpike Enterprise Finance Office.

**Southern Connector Extension  
Comparison of Daily Transactions by Month  
FY 2017 vs. FY 2016**

Month	Average Daily Transactions (ADT)*		Change
	FY 2017	FY 2016	
July	42,747	35,983	18.8%
August	39,115	33,642	16.3
September	36,895	30,796	19.8
October	39,083	33,974	15.0
November	40,924	34,574	18.4
December	44,730	38,964	14.8
January	41,921	36,007	16.4
February	44,932	38,957	15.3
March	49,134	44,228	11.1
April	48,724	40,838	19.3
May	45,576	38,412	18.7
June	45,920	39,637	15.9
<b>AADT</b>	<b>43,297</b>	<b>37,165</b>	<b>16.5%</b>

Source: Turnpike Enterprise Finance Office.  
\* ADT at tolled plaza locations.

**Southern Connector Extension  
Quarterly Revenue Results  
FY 2017 vs. FY 2016**

Months	FY 2017	FY 2016	Variance	
			Amount	Change
July	\$1,074,897	\$896,785	\$178,112	19.9%
August	998,445	843,982	154,463	18.3
September	903,384	745,497	157,887	21.2
1st Quarter Subtotal	2,976,726	2,486,264	490,462	19.7
October	876,177	843,864	32,313	3.8
November	994,493	831,675	162,818	19.6
December	1,106,397	961,223	145,174	15.1
2nd Quarter Subtotal	2,977,067	2,636,762	340,305	12.9
January	1,049,637	892,755	156,882	17.6
February	1,015,733	909,329	106,404	11.7
March	1,229,948	1,103,306	126,642	11.5
3rd Quarter Subtotal	3,295,318	2,905,390	389,928	13.4
April	1,173,654	982,424	191,230	19.5
May	1,128,995	952,386	176,609	18.5
June	1,074,157	953,976	120,181	12.6
4th Quarter Subtotal	3,376,806	2,888,786	488,020	16.9
<b>Annual Total</b>	<b>\$12,625,917</b>	<b>\$10,917,202</b>	<b>\$1,708,715</b>	<b>15.7%</b>

Source: Turnpike Enterprise Finance Office.

**Polk Parkway  
Comparison of Daily Transactions by Month  
FY 2017 vs. FY 2016**

Month	Average Daily Transactions (ADT)*		Change
	FY 2017	FY 2016	
July	87,552	82,662	5.9%
August	92,533	83,783	10.4
September	92,132	85,777	7.4
October	93,831	89,826	4.5
November	95,132	88,109	8.0
December	96,990	92,386	5.0
January	95,450	87,136	9.5
February	102,729	97,363	5.5
March	107,508	100,576	6.9
April	104,075	97,952	6.3
May	101,248	93,690	8.1
June	96,561	93,512	3.3
<b>AAADT</b>	<b>97,101</b>	<b>91,027</b>	<b>6.7%</b>

Source: Turnpike Enterprise Finance Office.  
\* ADT at tolled plaza locations.

**Polk Parkway  
Quarterly Revenue Results  
FY 2017 vs. FY 2016**

Months	FY 2017	FY 2016	Variance	
			Amount	Change
July	\$2,607,413	\$2,413,707	\$193,706	8.0%
August	2,741,186	2,437,931	303,255	12.4
September	2,637,199	2,410,468	226,731	9.4
1st Quarter Subtotal	7,985,798	7,262,106	723,692	10.0
October	\$2,471,969	2,610,406	(138,437)	(5.3)
November	2,731,278	2,499,534	231,744	9.3
December	2,885,921	2,688,988	196,933	7.3
2nd Quarter Subtotal	8,089,168	7,798,928	290,240	3.7
January	\$2,834,382	2,547,288	287,094	11.3
February	2,748,774	2,663,912	84,862	3.2
March	3,205,285	2,946,238	259,047	8.8
3rd Quarter Subtotal	8,788,441	8,157,438	631,003	7.7
April	\$2,976,410	2,764,778	211,632	7.7
May	3,001,993	2,736,850	265,143	9.7
June	2,753,711	2,638,811	114,900	4.4
4th Quarter Subtotal	8,732,114	8,140,439	591,675	7.3
<b>Annual Total</b>	<b>\$33,595,521</b>	<b>\$31,358,911</b>	<b>\$2,236,610</b>	<b>7.1%</b>

Source: Turnpike Enterprise Finance Office.

**Suncoast Parkway  
Comparison of Daily Transactions by Month  
FY 2017 vs. FY 2016**

Month	Average Daily Transactions (ADT)*		Change
	FY 2017	FY 2016	
July	84,865	80,002	6.1%
August	84,712	80,450	5.3
September	84,108	81,389	3.3
October	87,834	84,786	3.6
November	89,982	85,395	5.4
December	91,367	88,196	3.6
January	87,628	82,246	6.5
February	92,979	88,703	4.8
March	97,366	92,428	5.3
April	96,064	90,717	5.9
May	93,434	87,672	6.6
June	91,466	86,086	6.2
<b>AAADT</b>	<b>90,124</b>	<b>85,653</b>	<b>5.2%</b>

Source: Turnpike Enterprise Finance Office.

\* ADT at tolled plaza locations.

**Suncoast Parkway  
Quarterly Revenue Results  
FY 2017 vs. FY 2016**

Months	FY 2017	FY 2016	Variance	
			Amount	Change
July	\$2,240,103	\$2,095,674	\$144,429	6.9%
August	2,194,195	2,058,032	136,163	6.6
September	2,088,346	1,999,258	89,088	4.5
1st Quarter Subtotal	6,522,644	6,152,964	369,680	6.0
October	2,243,314	2,136,841	106,473	5.0
November	2,223,555	2,122,273	101,282	4.8
December	2,316,181	2,243,090	73,091	3.3
2nd Quarter Subtotal	6,783,050	6,502,204	280,846	4.3
January	2,209,910	2,070,490	139,420	6.7
February	2,112,872	2,098,686	14,186	0.7
March	2,491,943	2,337,589	154,354	6.6
3rd Quarter Subtotal	6,814,725	6,506,765	307,960	4.7
April	2,351,102	2,212,658	138,444	6.3
May	2,322,023	2,216,575	105,448	4.8
June	2,200,049	2,117,599	82,450	3.9
4th Quarter Subtotal	6,873,174	6,546,832	326,342	5.0
<b>Annual Total</b>	<b>\$26,993,593</b>	<b>\$25,708,765</b>	<b>\$1,284,828</b>	<b>5.0%</b>

Source: Turnpike Enterprise Finance Office.

**Western Beltway, Part C**  
**Comparison of Daily Transactions by Month**  
**FY 2017 vs. FY 2016**

Month	Average Daily Transactions (ADT)*		Change
	FY 2017	FY 2016	
July	34,498	29,612	16.5%
August	30,949	26,801	15.5
September	28,681	24,227	18.4
October	30,424	26,646	14.2
November	31,601	26,827	17.8
December	34,068	29,736	14.6
January	32,423	27,940	16.0
February	35,804	30,659	16.8
March	39,902	35,026	13.9
April	38,807	32,235	20.4
May	36,011	30,021	20.0
June	37,537	31,989	17.3
<b>AADT</b>	<b>34,213</b>	<b>29,308</b>	<b>16.7%</b>

Source: Turnpike Enterprise Finance Office.  
\* ADT at tolled plaza locations.



**Western Beltway, Part C  
Quarterly Revenue Results  
FY 2017 vs. FY 2016**

Months	FY 2017	FY 2016	Variance	
			Amount	Change
July	\$1,102,913	\$936,268	\$166,645	17.8%
August	1,010,071	849,674	160,397	18.9
September	906,866	756,998	149,868	19.8
1st Quarter Subtotal	3,019,850	2,542,940	476,910	18.8
October	\$893,406	853,500	39,906	4.7
November	996,984	828,993	167,991	20.3
December	1,100,218	941,066	159,152	16.9
2nd Quarter Subtotal	2,990,608	2,623,559	367,049	14.0
January	\$1,053,766	877,607	176,159	20.1
February	1,053,830	913,241	140,589	15.4
March	1,297,940	1,116,487	181,453	16.3
3rd Quarter Subtotal	3,405,536	2,907,335	498,201	17.1
April	\$1,202,276	1,004,483	197,793	19.7
May	1,155,514	963,100	192,414	20.0
June	1,156,114	990,914	165,200	16.7
4th Quarter Subtotal	3,513,904	2,958,497	555,407	18.8
<b>Annual Total</b>	<b>\$12,929,898</b>	<b>\$11,032,331</b>	<b>\$1,897,567</b>	<b>17.2%</b>

Source: Turnpike Enterprise Finance Office.

**I-4 Connector  
Comparison of Daily Transactions by Month  
FY 2017 vs. 2016**

Month	Average Daily Transactions (ADT)*		Change
	FY 2017	FY 2016	
July	46,012	39,356	16.9%
August	47,156	40,633	16.1
September	46,523	41,512	12.1
October	46,993	43,707	7.5
November	47,107	42,491	10.9
December	47,889	44,460	7.7
January	48,048	43,632	10.1
February	50,116	47,555	5.4
March	50,587	48,420	4.5
April	48,804	47,734	2.2
May	49,781	46,674	6.7
June	49,022	47,959	2.2
<b>AA DT</b>	<b>48,157</b>	<b>44,490</b>	<b>8.2%</b>

Source: Turnpike Enterprise Finance Office.  
\* ADT at tolled plaza locations.

**I-4 Connector  
Quarterly Revenue Results  
FY 2017 vs. FY 2016**

Months	FY 2017	FY 2016	Variance	
			Amount	Change
July	\$1,101,084	\$922,740	\$178,344	19.3%
August	1,131,678	957,785	173,893	18.2
September	1,069,447	953,328	116,119	12.2
1st Quarter Subtotal	3,302,209	2,833,853	468,356	16.5
October	1,100,685	1,024,361	76,324	7.5
November	1,082,236	943,191	139,045	14.7
December	1,128,735	1,007,461	121,274	12.0
2nd Quarter Subtotal	3,311,656	2,975,013	336,643	11.3
January	1,146,239	1,003,989	142,250	14.2
February	1,085,360	1,029,417	55,943	5.4
March	1,225,879	1,103,584	122,295	11.1
3rd Quarter Subtotal	3,457,478	3,136,990	320,488	10.2
April	1,119,969	1,043,781	76,188	7.3
May	1,166,492	1,051,003	115,489	11.0
June	1,090,126	1,030,060	60,066	5.8
4th Quarter Subtotal	3,376,587	3,124,844	251,743	8.1
<b>Annual Total</b>	<b>\$13,447,930</b>	<b>\$12,070,700</b>	<b>\$1,377,230</b>	<b>11.4%</b>

Source: Turnpike Enterprise Finance Office.

**Beachline East Expressway  
Comparison of Daily Transactions by Month  
FY 2017 vs. FY 2016**

Month	Average Daily Transactions (ADT)*		Change
	FY 2017	FY 2016	
July	55,800	50,908	9.6%
August	51,634	48,010	7.5
September	49,749	46,133	7.8
October	48,814	47,862	2.0
November	51,965	48,999	6.1
December	53,155	50,748	4.7
January	51,041	47,124	8.3
February	54,998	51,916	5.9
March	59,576	58,700	1.5
April	56,690	54,730	3.6
May	55,992	54,865	2.1
June	54,780	53,879	1.7
<b>AA DT</b>	<b>53,676</b>	<b>51,155</b>	<b>4.9%</b>

Source: Turnpike Enterprise Finance Office.

\* ADT at tolled plaza locations (S.R. 520 ramps and Central Florida Expressway Authority owned Dallas Mainline Toll Plaza)

**Beachline East Expressway  
Quarterly Revenue Results\*  
FY 2017 vs. FY 2016**

Months	FY 2017	FY 2016	Variance	
			Amount	Change
July	\$506,736	\$473,540	\$33,196	7.0%
August	464,816	443,304	21,512	4.9
September	428,865	407,224	21,641	5.3
1st Quarter Subtotal	1,400,417	1,324,068	76,349	5.8
October	379,295	432,924	(53,629)	-12.4
November	445,765	429,548	16,217	3.8
December	476,029	466,942	9,087	1.9
2nd Quarter Subtotal	1,301,089	1,329,414	(28,325)	-2.1
January	456,688	429,693	26,995	6.3
February	443,692	443,900	(208)	0.0
March	540,165	545,201	(5,036)	-0.9
3rd Quarter Subtotal	1,440,545	1,418,794	21,751	1.5
April	493,663	480,644	13,019	2.7
May	495,134	488,996	6,138	1.3
June	471,697	470,264	1,433	0.3
4th Quarter Subtotal	1,460,494	1,439,904	20,590	1.4
<b>Annual Total</b>	<b>\$5,602,545</b>	<b>\$5,512,180</b>	<b>\$90,365</b>	<b>1.6%</b>

Source: Turnpike Enterprise Finance Office.

\* Revenue includes tolls collected at S.R 520 ramps and Turnpike's portion of tolls collected at Central Florida Expressway Authority owned Dallas Mainline Toll Plaza.

**Expansion Projects  
Seasonal Traffic Variation  
FY 2017**

Month	Seasonal Factor								
	Sawgrass Expressway	Seminole Expressway	Veterans Expressway	Southern Connector Extension	Polk Parkway	Suncoast Parkway	Western Beltway, Part C	I-4 Connector	Beachline East Expressway
July, 2016	0.92	0.93	0.91	0.99	0.90	0.94	1.01	0.96	1.04
August	0.97	0.98	0.95	0.90	0.95	0.94	0.90	0.98	0.96
September	0.97	0.96	0.94	0.85	0.95	0.93	0.84	0.97	0.93
October	0.94	0.95	0.96	0.90	0.97	0.97	0.89	0.98	0.91
November	1.00	0.99	0.98	0.95	0.98	1.00	0.92	0.98	0.97
December	1.02	1.00	1.02	1.03	1.00	1.01	1.00	0.99	0.99
January, 2017	0.99	0.97	0.99	0.97	0.98	0.97	0.95	1.00	0.95
February	1.05	1.02	1.04	1.04	1.06	1.03	1.05	1.04	1.02
March	1.08	1.07	1.07	1.13	1.11	1.08	1.17	1.05	1.11
April	1.02	1.05	1.05	1.13	1.07	1.07	1.13	1.01	1.06
May	1.04	1.05	1.05	1.05	1.04	1.04	1.05	1.03	1.04
June	1.00	1.03	1.04	1.06	0.99	1.01	1.10	1.02	1.02

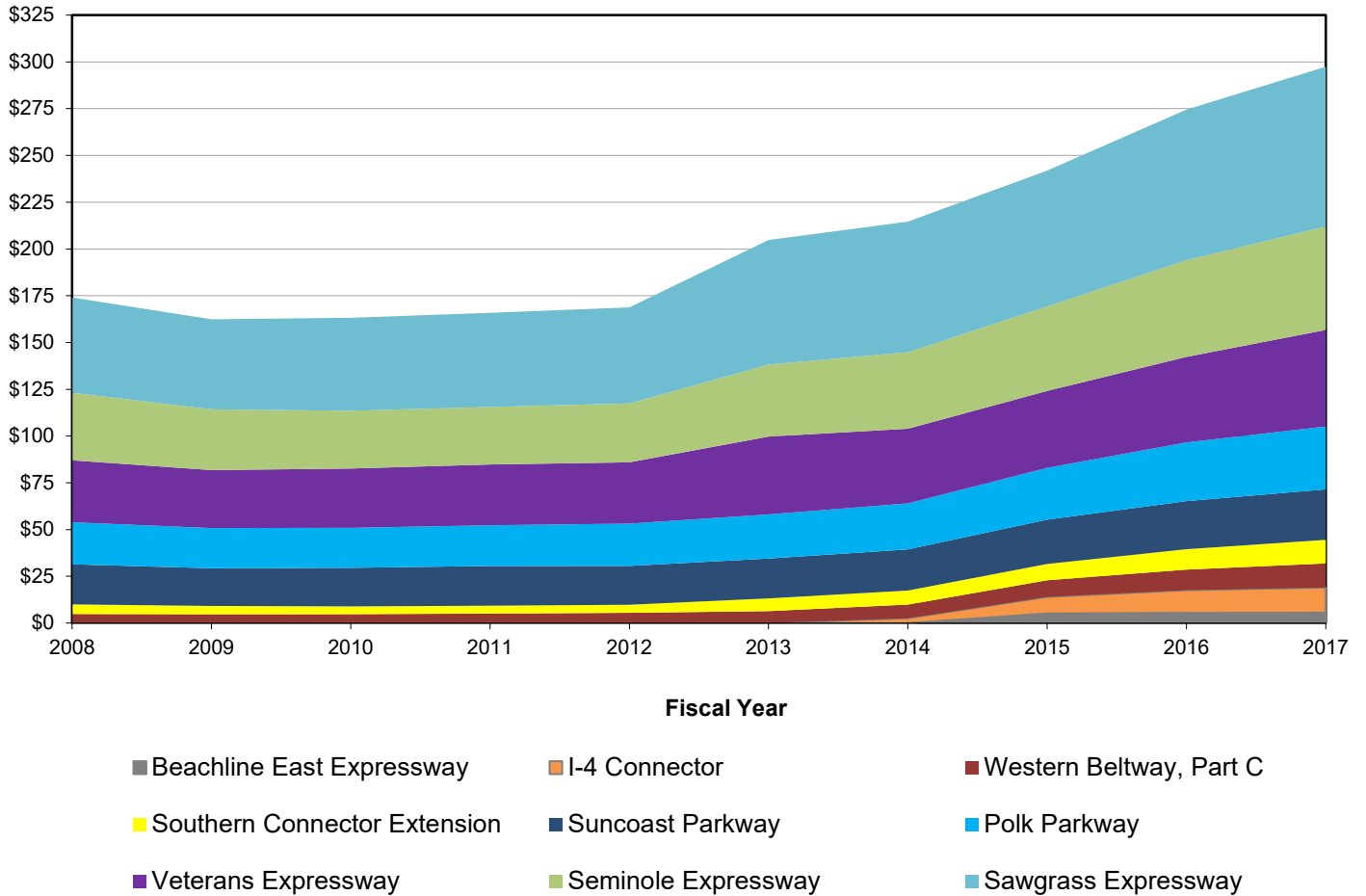
Source: Turnpike Enterprise Finance Office.

**Expansion Projects**  
**FY 2017 Toll Revenue Forecast (\$000)**  
**FY 2018 through FY 2028**

Fiscal Year	Sawgrass Expressway	Seminole Expressway	Veterans Expressway	Southern Connector	Polk Parkway	Suncoast Parkway	Western Beltway, C	I-4 Connector	Beachline East	First Coast Expressway	Total
2018	\$84,732	\$56,112	\$50,923	\$13,106	\$34,196	\$27,466	\$13,566	\$13,206	\$6,008	0	\$299,315
2019	90,456	60,649	58,477	14,408	36,758	29,462	15,007	14,374	6,516	\$7,135	333,242
2020	92,823	62,641	61,111	15,006	37,715	27,892	15,789	15,056	6,629	8,296	342,958
2021	94,970	64,667	63,699	15,585	38,674	28,704	16,585	15,740	6,738	9,393	354,755
2022	101,677	66,674	66,210	16,155	37,154	29,513	17,393	16,423	6,852	10,443	368,494
2023	104,660	69,501	68,561	16,956	38,148	30,312	18,456	17,103	7,130	11,451	382,278
2024	107,821	71,371	70,870	17,540	39,125	31,136	19,316	17,775	7,248	12,451	394,653
2025	110,746	73,246	73,114	18,110	40,081	31,919	20,178	18,439	7,370	13,449	406,652
2026	113,619	75,083	75,285	18,663	41,013	32,690	21,038	19,108	7,489	14,431	418,419
2027	116,534	76,968	77,379	19,220	41,965	33,443	21,899	19,783	7,609	15,382	430,182
2028	119,484	79,793	79,383	20,043	42,938	34,250	22,993	20,461	7,922	16,349	443,616

Note: The above revenue forecasts include the impact from 15-day systemwide toll suspension due to Hurricane Irma in early September 2017. The revenue forecasts also reflect the implementation of All-Electronic Tolling on Suncoast Parkway in FY 2020 and Polk Parkway in FY 2022. The Sawgrass Expressway forecast includes express lanes in FY 2022. The Veterans Expressway forecast includes express lanes starting in FY 2019. Additionally, the forecast reflects the widening impact on Polk Parkway from CR 546 to north of Eastern Plaza and a new interchange at Braddock Road in FY 2022. The First Coast Expressway is assumed open to traffic in FY 2019.

**Annual Toll Revenue for Expansion Projects  
FY 2008 through FY 2017 (In Millions)**

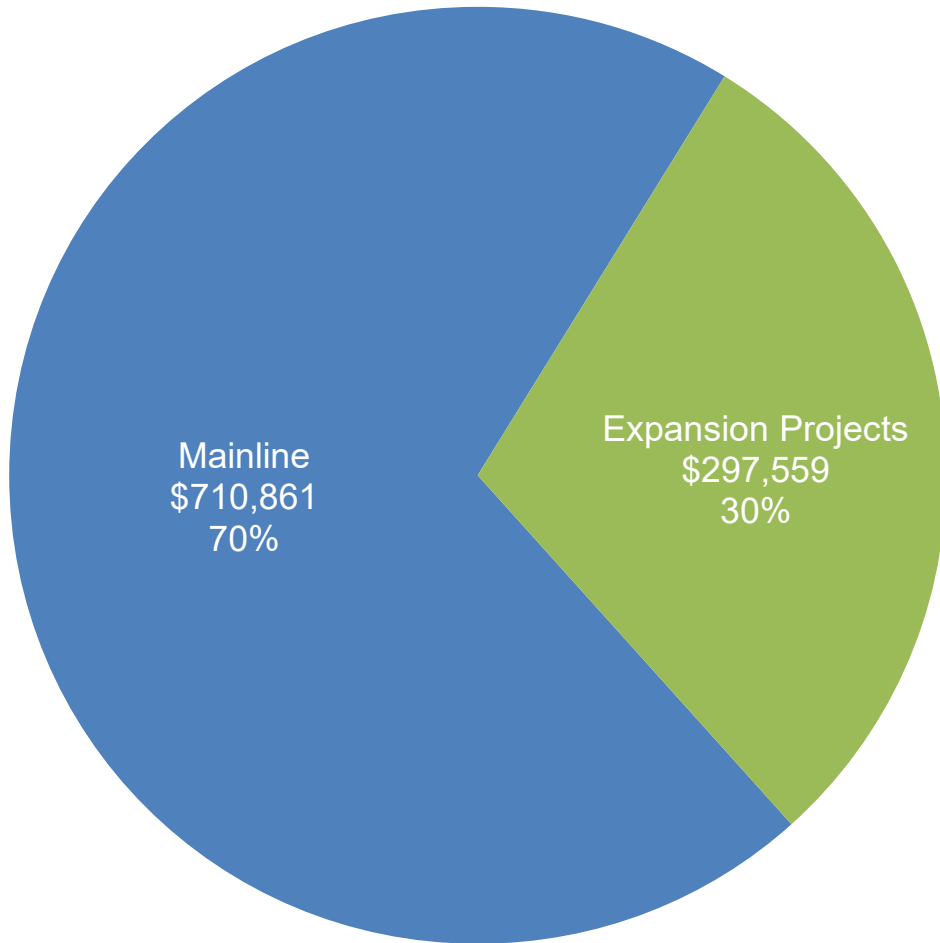


Source: Turnpike Enterprise Finance Office.

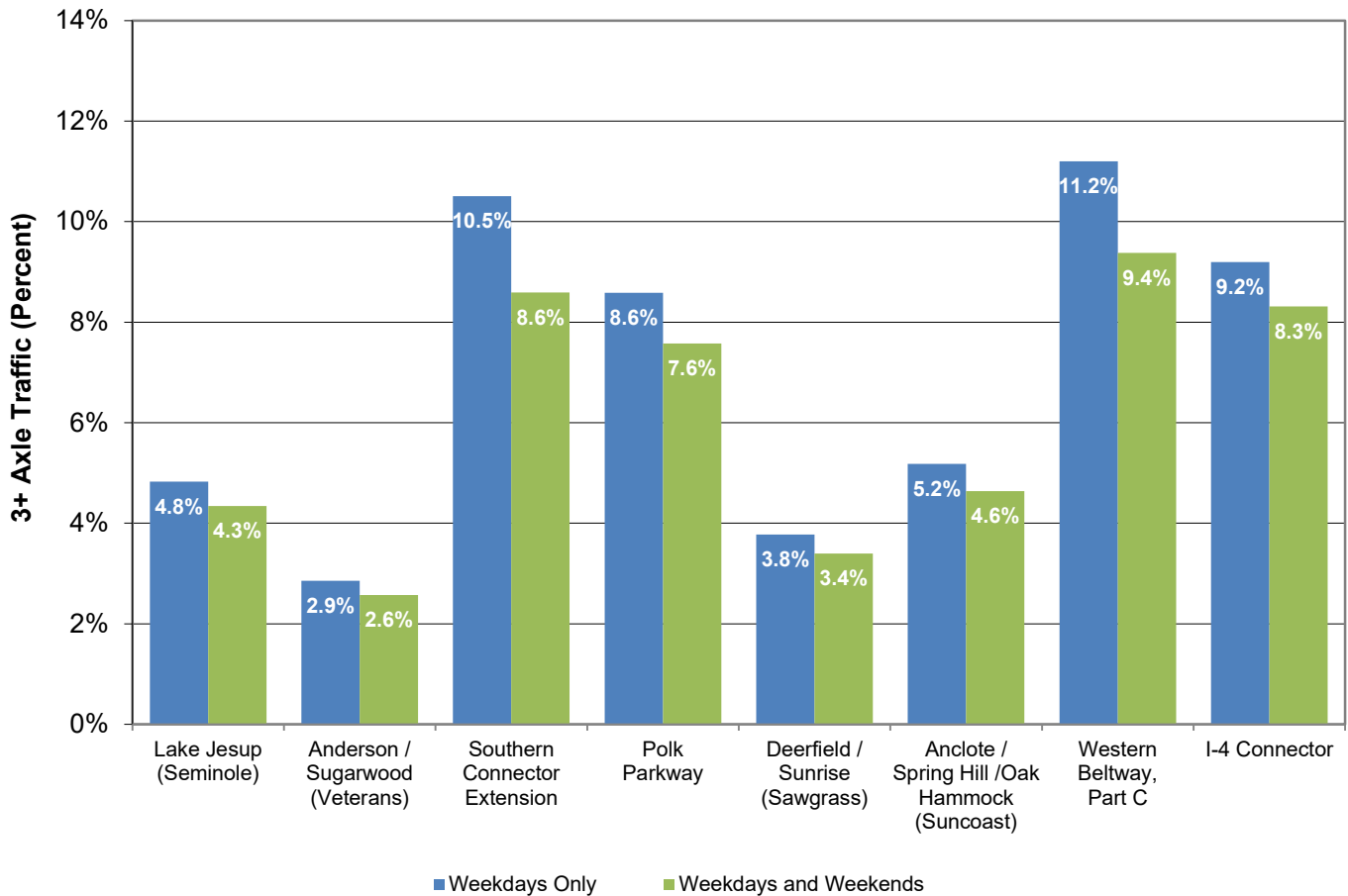
This graph shows the historical annual toll revenues on the expansion projects for the past 10 years. Typically, these expansion projects have experienced a higher growth rate than the Mainline facilities due to ramp-up and increased levels of land-use in the respective corridors. Ramp-up reflects motorists' increasing acceptance of the toll facility's value in relation to time savings and convenience. Toll revenue increase in FY 2017 is attributed to systemwide traffic growth.



**Florida's Turnpike System  
Gross Toll Revenue (\$000)  
FY 2017**



## Expansion Projects 3+ Axle Vehicles in the Vehicle Mix



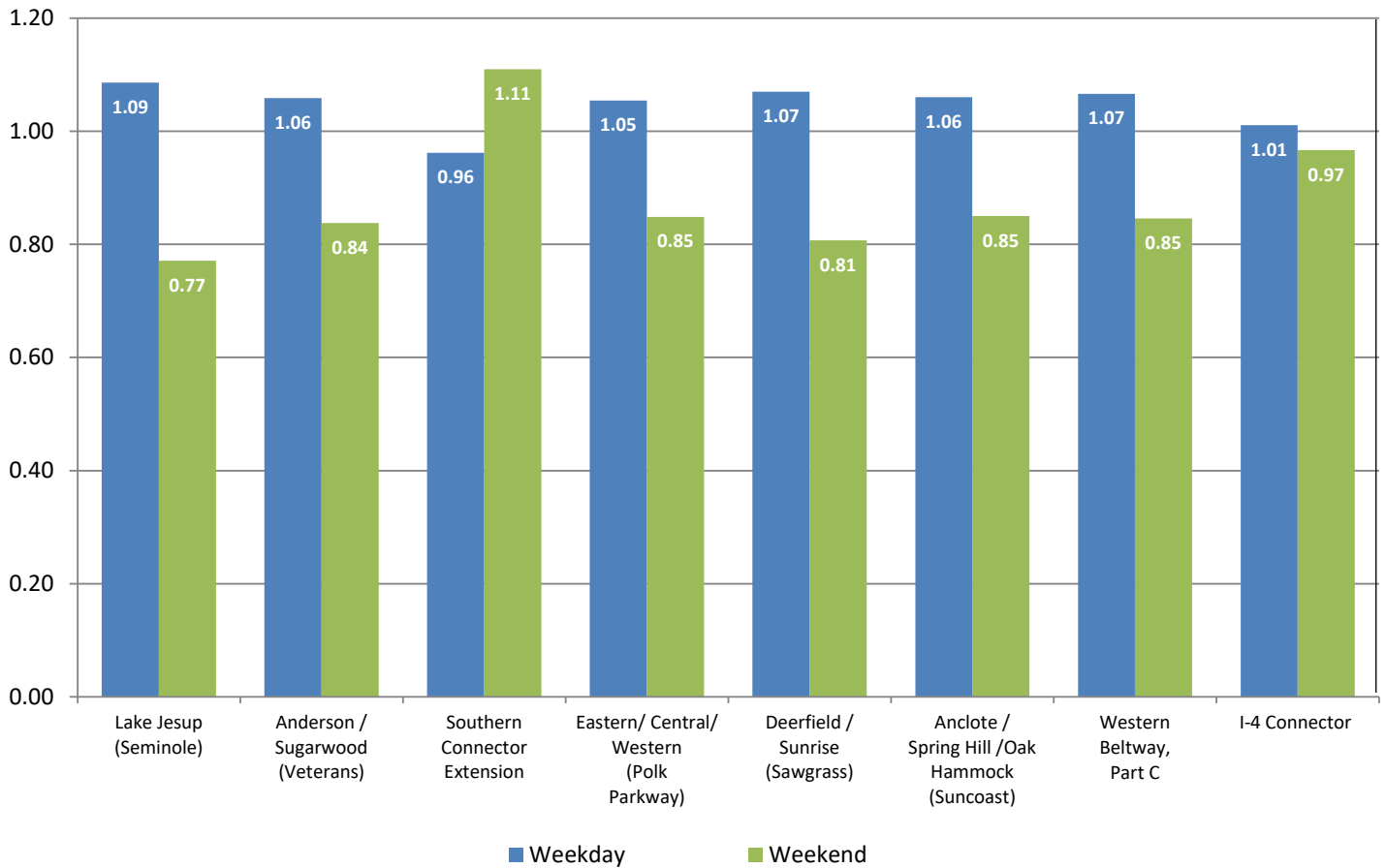
Source: Data obtained from Turnpike Enterprise Finance Office for the week beginning November 7, 2016.

There is some variation in the characteristics of 3+ axle vehicles (generally representing trucks and recreational vehicles) versus 2-axle passenger cars. The percentage of 3+ axle traffic is shown in the graph above for each expansion project during a typical seven-day week for which there were no unusual events. The percent vehicle mix was calculated for weekdays only and for all seven days of the week combined.

In general, a higher vehicle mix of 3+ axle vehicles is observed on all eight facilities during weekdays since truck traffic is usually higher during the week than on the weekends. As in prior years, higher than average percentages of 3+ axle vehicles are reported on Southern Connector Extension, Polk Parkway, Western Beltway, Part C and the I-4 Connector. Commercial traffic on these facilities ranges from 8.6 percent on Polk Parkway to 11.2 percent on Western Beltway, Part C. The Southern Connector Extension provides access to I-4 from the Metro Orlando industrial areas near the Orange County and Osceola County line. The high truck traffic on the Polk Parkway is partly attributed to distribution centers in the Lakeland area, such as Publix and Rooms To Go, and the opening of additional commercial centers in the corridor. The Western Beltway, Part C provides a preferred alternate route to I-4 for truck traffic traveling between Leesburg and Apopka. The exclusive truck lanes on the I-4 Connector provide direct access to and from the Port of Tampa.

On the other hand, the Anderson / Sugarwood toll plazas on the Veterans Expressway has the lowest percentage of 3+ axle vehicles at 2.9 percent on weekdays, reflecting the high commuter area served by this facility.

## Expansion Projects Weekday vs. Weekend Factors

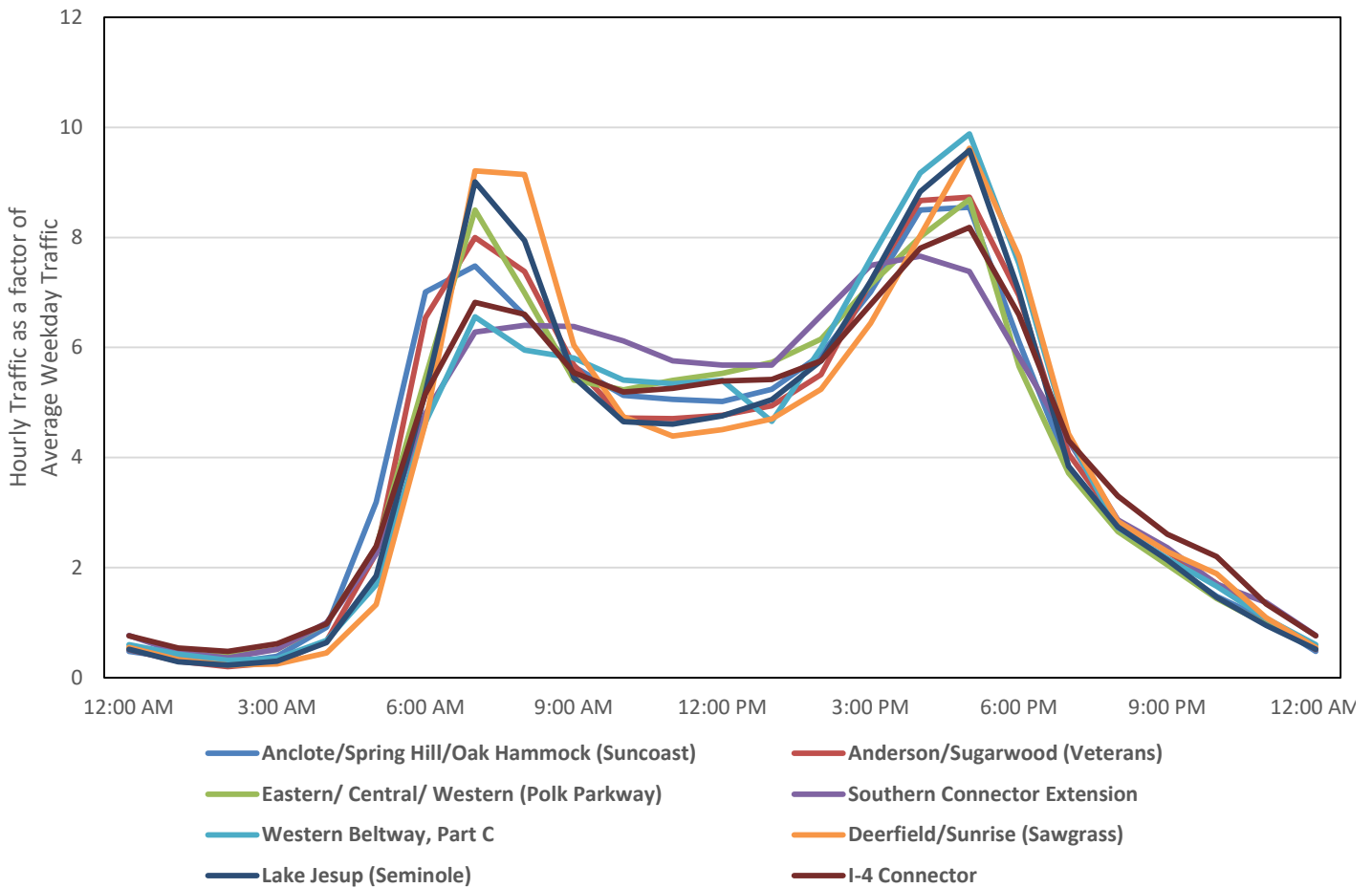


Source: Data obtained from Turnpike Enterprise Finance Office for the week beginning November 7, 2016.  
 Note: A factor of 1.0 represents a typical average day over the 7-day period.

The daily volumes are grouped by weekdays (Monday through Friday) and weekends (Saturday and Sunday). With an average day in a seven-day week representing the baseline for comparison between weekdays and weekends, a weekday/ weekend factor is calculated for a representative group of toll plazas on the expansion projects. These factors are shown in the graph above.

It is notable that weekday traffic on all facilities that primarily serve commuter traffic (i.e., Seminole, Veterans, Polk, Sawgrass and Western Beltway, Part C) is between 5 and 9 percent higher than the average for the week. Conversely, the weekend traffic at these five facilities is 15 to 23 percent lower than the weekly average. The high level of weekend traffic is characteristic of a facility that serves an area of major tourist attractions and recreational trips. The higher volumes of weekday traffic (i.e. commuter traffic) on the Western Beltway, Part C is due in part to easy access provided to Disney's Celebration area by this facility as an alternative to the congested I-4.

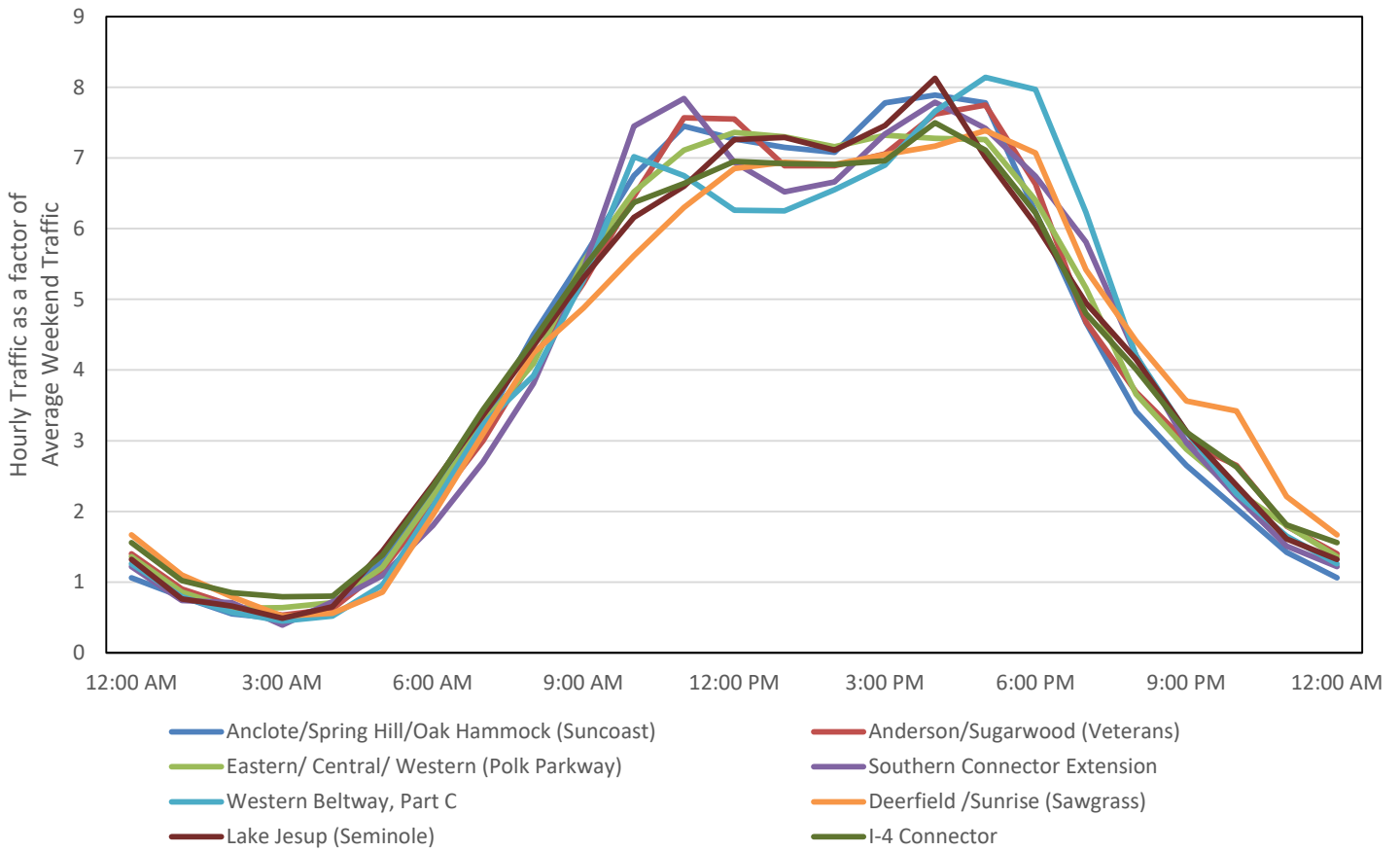
## Expansion Projects Average Hourly Weekday Factors



Source: Data obtained from Turnpike Enterprise Finance Office for the 5-day period beginning November 7, 2016.

The weekday hourly factors at selected toll plazas during FY 2017 along the Turnpike’s expansion projects are shown in the graph above. The results show typical morning and evening peak periods, with the most noticeable peaks evident on the commuter facilities. The peak periods on the Southern Connector Extension are slightly less defined because of the combination of commuters and tourists that use the facility during a typical day. As in prior years, the Seminole and Sawgrass Expressways have the highest peak hour ratios.

## Expansion Projects Average Hourly Weekend Factors



Source: Data obtained from Turnpike Enterprise Finance Office for the 2-day period beginning Saturday November 12, 2016.

This graph depicts the FY 2017 hourly factors on the same facilities shown in previous graph for weekends. Hourly weekend variations on all of these facilities show single daily peaks and plateaus that extend between the late morning hours as customers travel to their destinations and early evening hours as they return home.