

# SUNCOAST PARKWAY 2 (SR 589), PHASE 2 - DESIGN: ALTERNATIVE #1

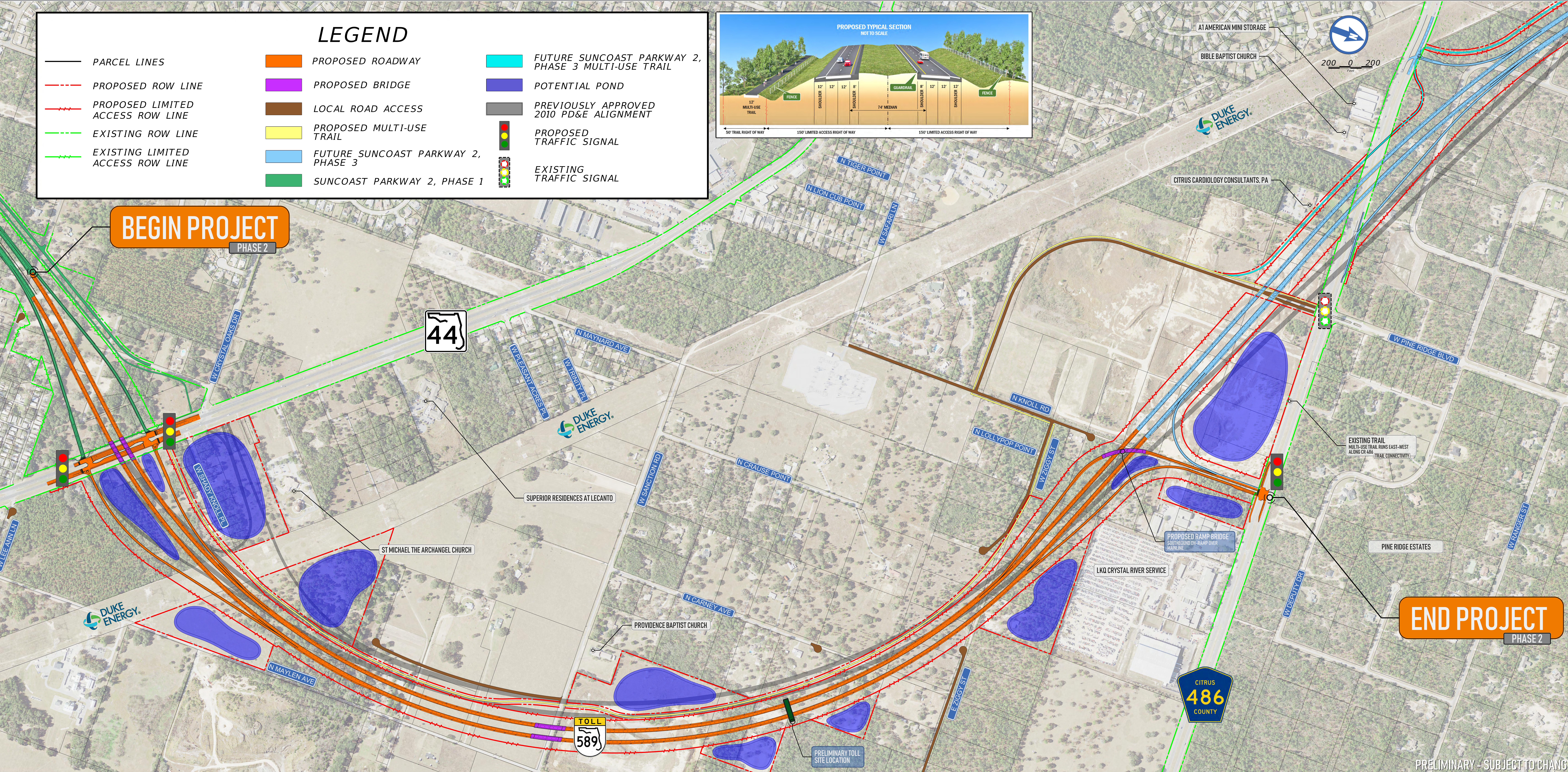
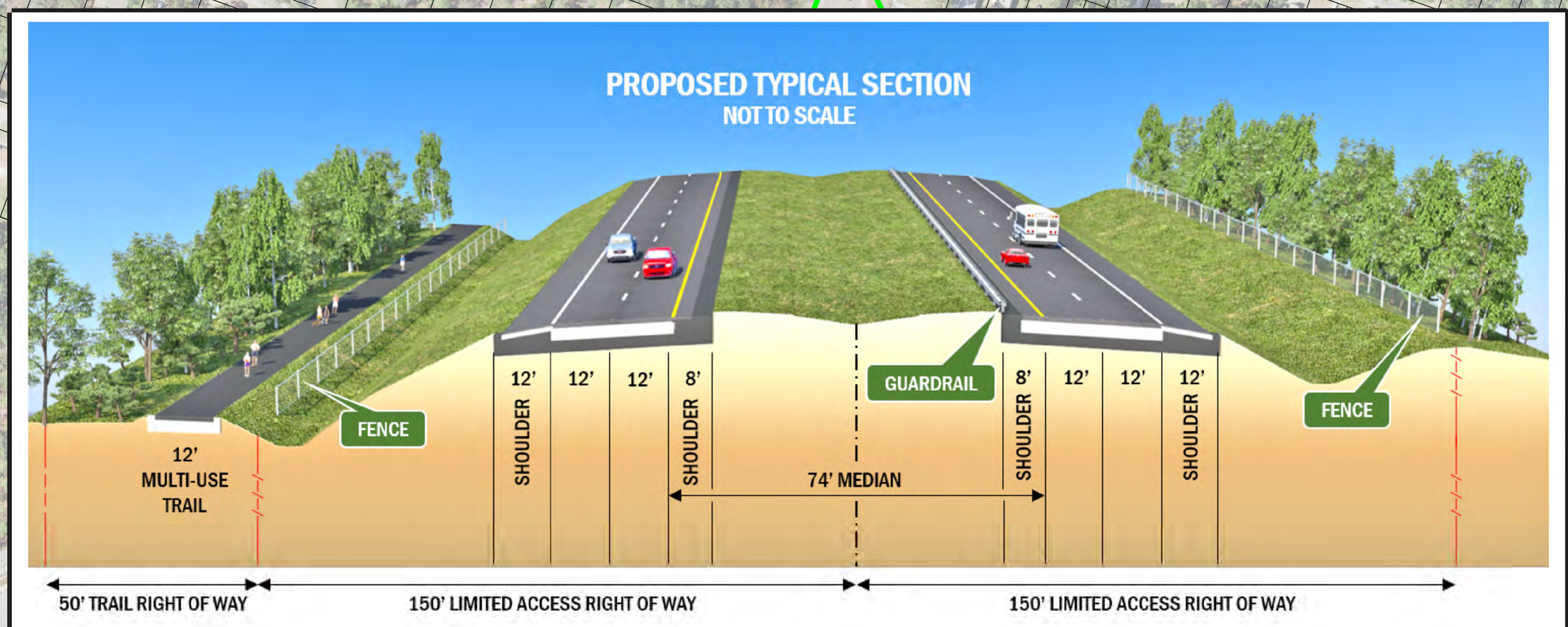
FROM SR 44 TO CR 486 | CR 486 SOUTHBOUND ON-RAMP BRIDGED OVER MAINLINE



FINANCIAL PROJECT ID NUMBER: 442764-1

## LEGEND

- |                                        |                                    |                                                    |
|----------------------------------------|------------------------------------|----------------------------------------------------|
| — PARCEL LINES                         | PROPOSED ROADWAY                   | FUTURE SUNCOAST PARKWAY 2, PHASE 3 MULTI-USE TRAIL |
| - - - PROPOSED ROW LINE                | PROPOSED BRIDGE                    | POTENTIAL POND                                     |
| - - - PROPOSED LIMITED ACCESS ROW LINE | LOCAL ROAD ACCESS                  | PREVIOUSLY APPROVED 2010 PD&E ALIGNMENT            |
| - - - EXISTING ROW LINE                | PROPOSED MULTI-USE TRAIL           | PROPOSED TRAFFIC SIGNAL                            |
| - - - EXISTING LIMITED ACCESS ROW LINE | FUTURE SUNCOAST PARKWAY 2, PHASE 3 | EXISTING TRAFFIC SIGNAL                            |
|                                        | SUNCOAST PARKWAY 2, PHASE 1        |                                                    |



BEGIN PROJECT

PHASE 2

END PROJECT

PHASE 2