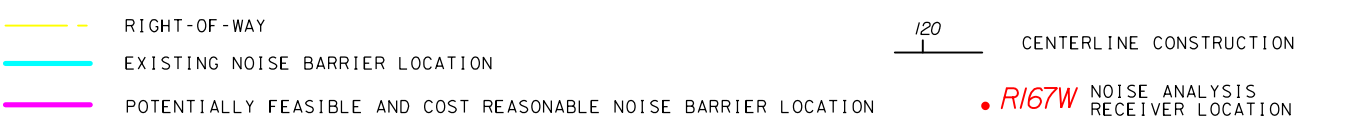


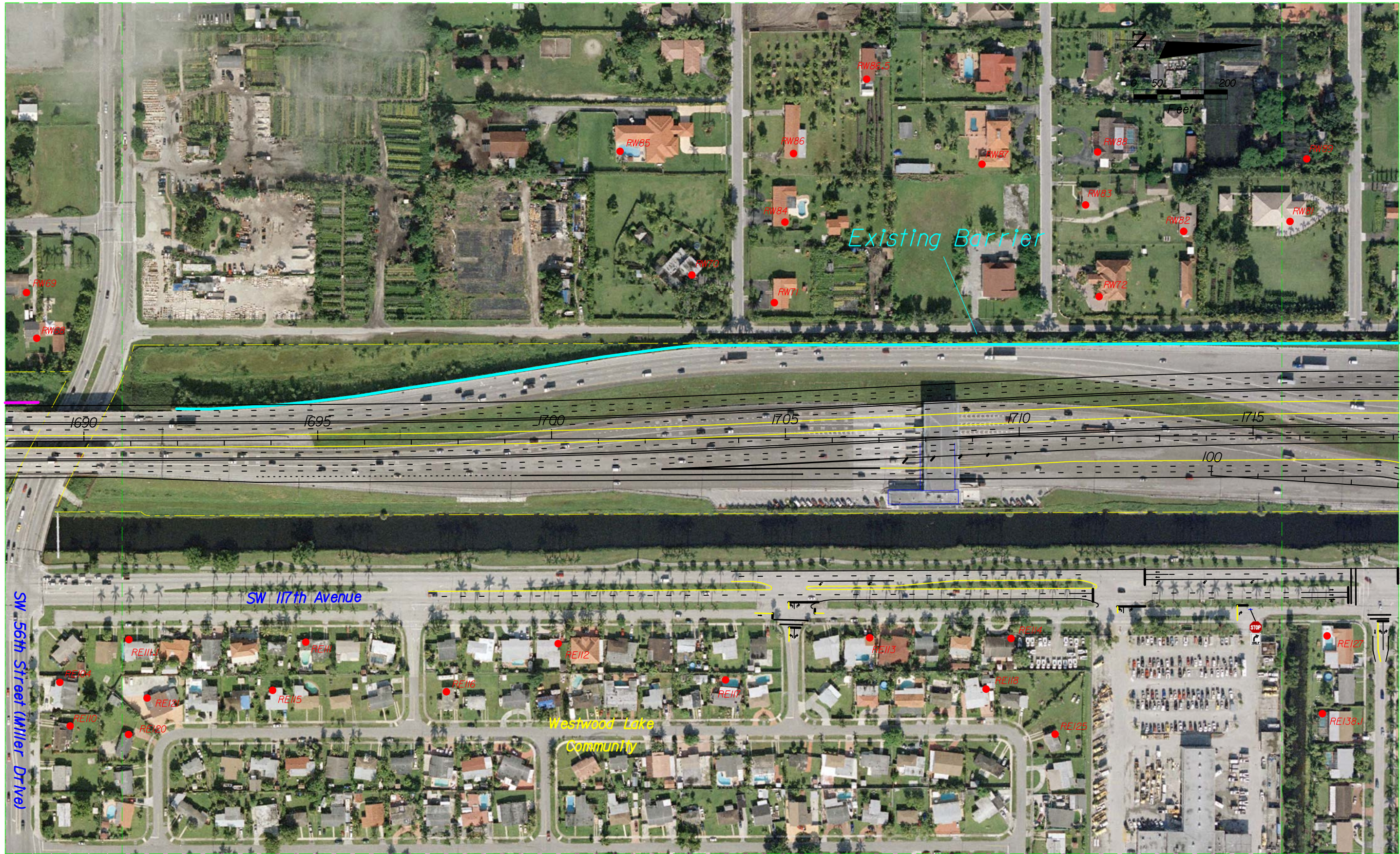
WIDENING FLORIDA'S TURNPIKE
S.R. 821 (H.E.F.T) FROM KILLIAN PARKWAY TO BIRD ROAD
(FPID 415051-1 & 427146-1) MIAMI-DADE COUNTY, FLORIDA

SHEET
 NO.
 5



WIDENING FLORIDA'S TURNPIKE
S.R. 821 (H.E.F.T) FROM KILLIAN PARKWAY TO BIRD ROAD
(FPID 415051-1 & 427146-1) MIAMI-DADE COUNTY, FLORIDA

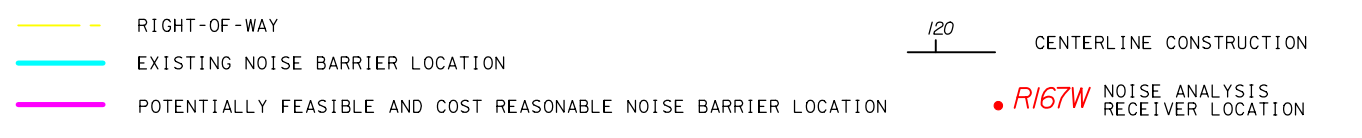
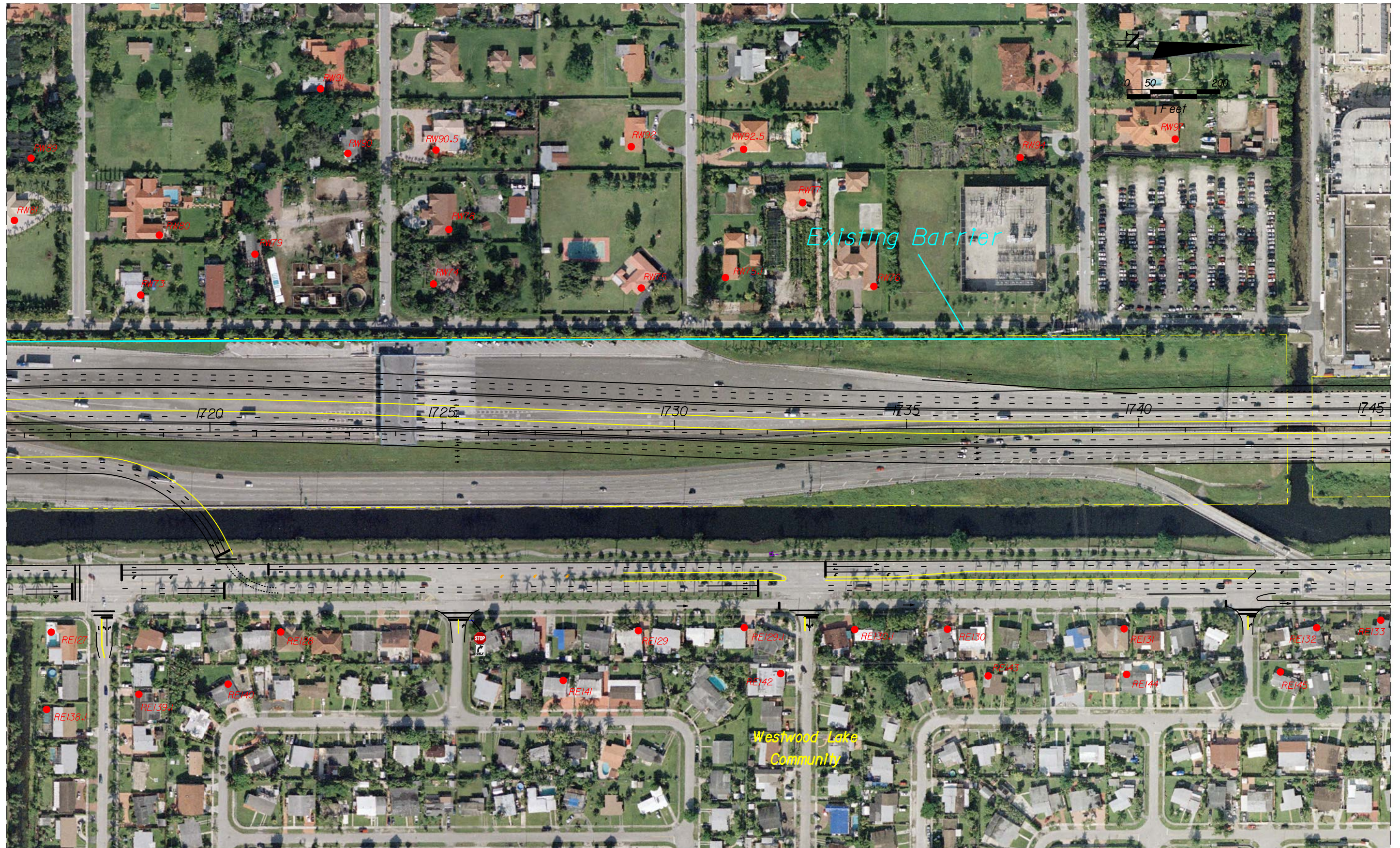
SHEET NO.
6



- RIGHT-OF-WAY
- EXISTING NOISE BARRIER LOCATION
- POTENTIALLY FEASIBLE AND COST REASONABLE NOISE BARRIER LOCATION

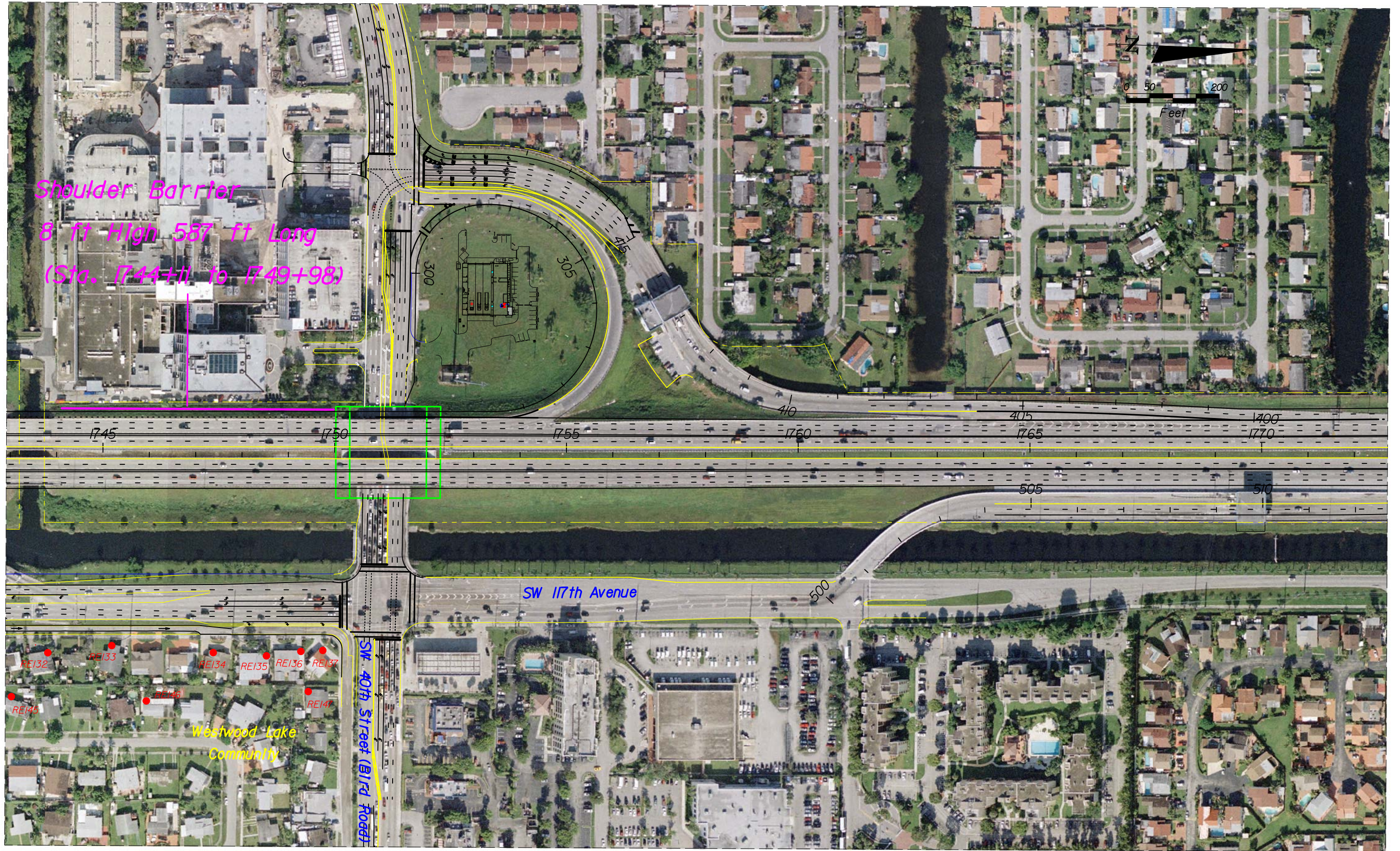
120
CENTERLINE CONSTRUCTION
• R167W NOISE ANALYSIS RECEIVER LOCATION

WIDENING FLORIDA'S TURNPIKE
S.R. 821 (H.E.F.T) FROM KILLIAN PARKWAY TO BIRD ROAD
(FPID 415051-1 & 427146-1) MIAMI-DADE COUNTY, FLORIDA



WIDENING FLORIDA'S TURNPIKE
S.R. 821 (H.E.F.T) FROM KILLIAN PARKWAY TO BIRD ROAD
(FPID 415051-1 & 427146-1) MIAMI-DADE COUNTY, FLORIDA

SHEET NO.
8



- RIGHT-OF-WAY
- EXISTING NOISE BARRIER LOCATION
- POTENTIALLY FEASIBLE AND COST REASONABLE NOISE BARRIER LOCATION
- 120 CENTERLINE CONSTRUCTION
- **RI67W** NOISE ANALYSIS RECEIVER LOCATION

WIDENING FLORIDA'S TURNPIKE
SR. 821 (H.E.F.T) FROM KILLIAN PARKWAY TO BIRD ROAD
(FPID 415051-1 & 427146-1) MIAMI-DADE COUNTY, FLORIDA

SHEET NO.

9