



Non-shoulder Barrier
 16 ft High / 4,711 ft Long
 (Sta. 1529+27 to 1570+98)

Non-shoulder Barrier
 16 ft High / 4,614 ft Long
 (Sta. 1529+00 to 1573+75)



 RIGHT-OF-WAY	 120 CENTERLINE CONSTRUCTION
 EXISTING NOISE BARRIER LOCATION	 RI67W NOISE RECEPTOR LOCATION
 NOISE BARRIER (FEASIBLE AND COST REASONABLE)	

WIDENING FLORIDA'S TURNPIKE
S.R. 821 (H.E.F.T) FROM KILLIAN PARKWAY TO BIRD ROAD
(FPID 415051-1 & 427146-1) MIAMI-DADE COUNTY, FLORIDA

SHEET NO.
1



Non-shoulder Barrier
16 ft High / 4,171 ft Long
(Sta. 1529+27 to 1570+98)

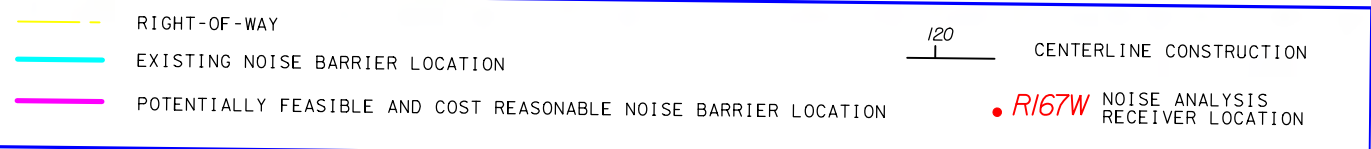
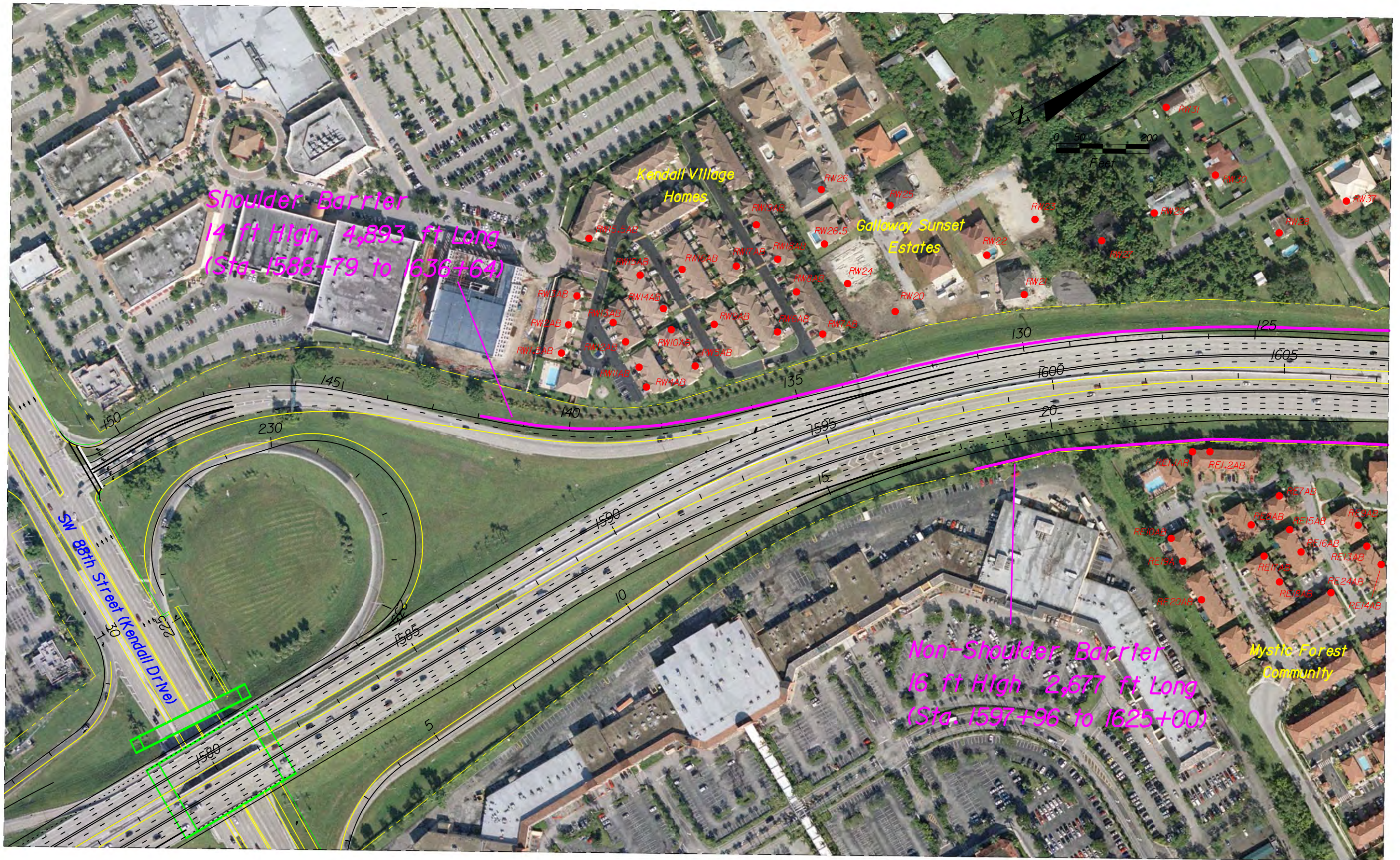
Shoulder Barrier
8 ft High / 1,071 ft Long
(Sta. 1568+31 to 1579+02)

Non-shoulder Barrier
16 ft High / 4,614 ft Long
(Sta. 1529+00 to 1573+75)

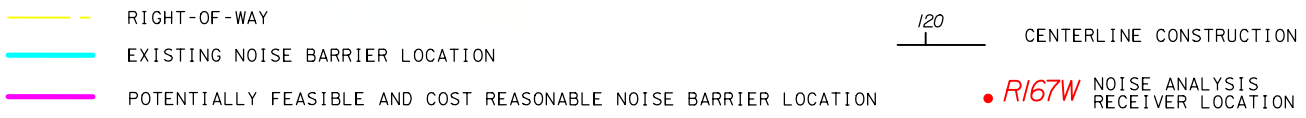
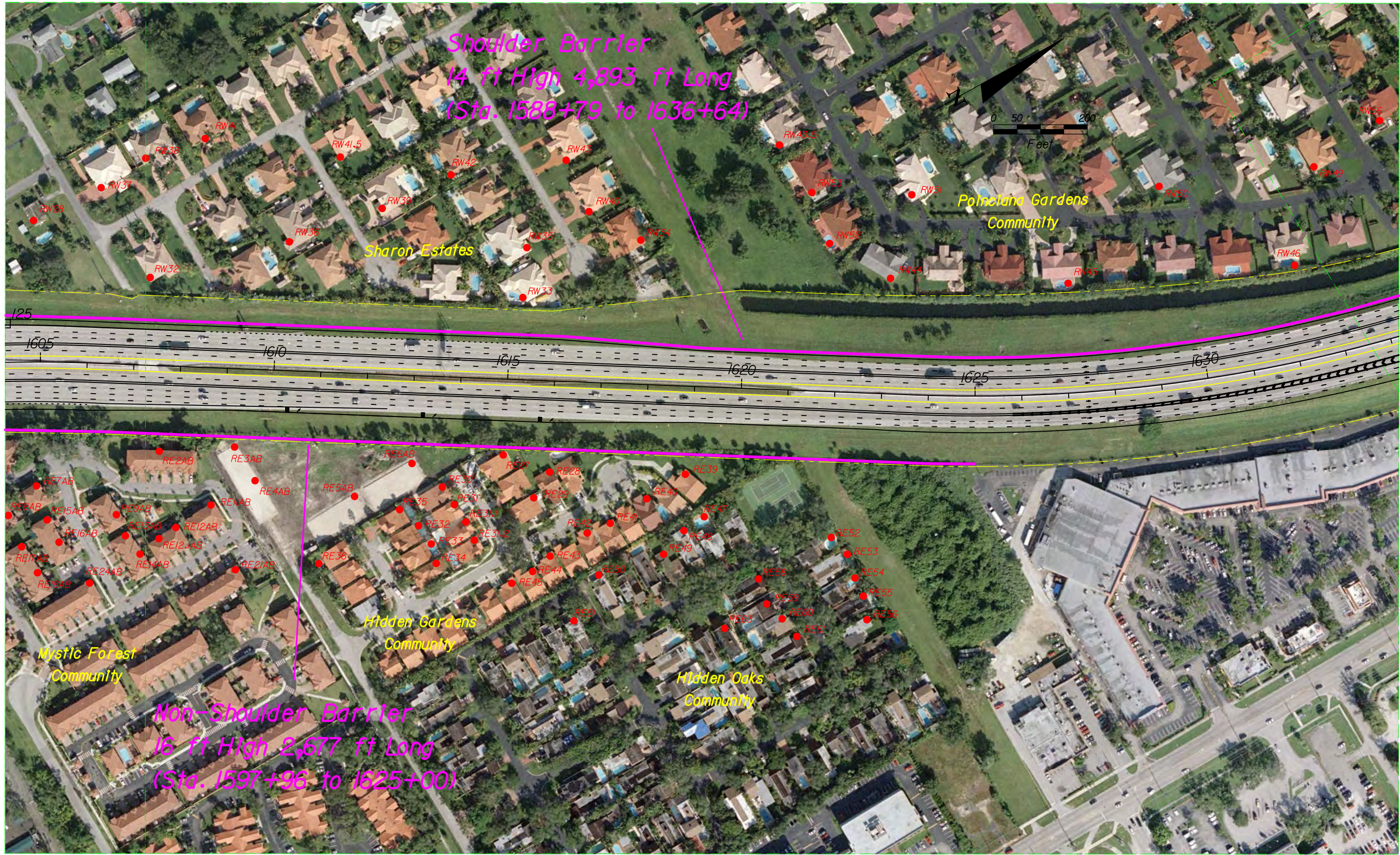


WIDENING FLORIDA'S TURNPIKE
S.R. 821 (H.E.F.T) FROM KILLIAN PARKWAY TO BIRD ROAD
(FPID 415051-1 & 427146-1) MIAMI-DADE COUNTY, FLORIDA

SHEET NO.
2



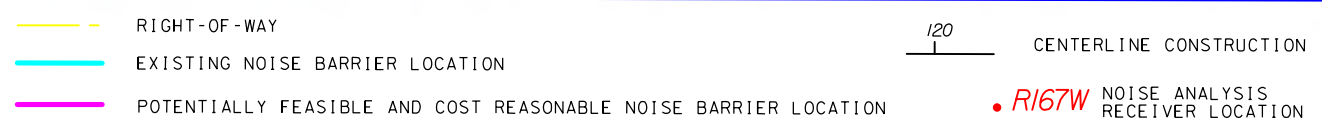
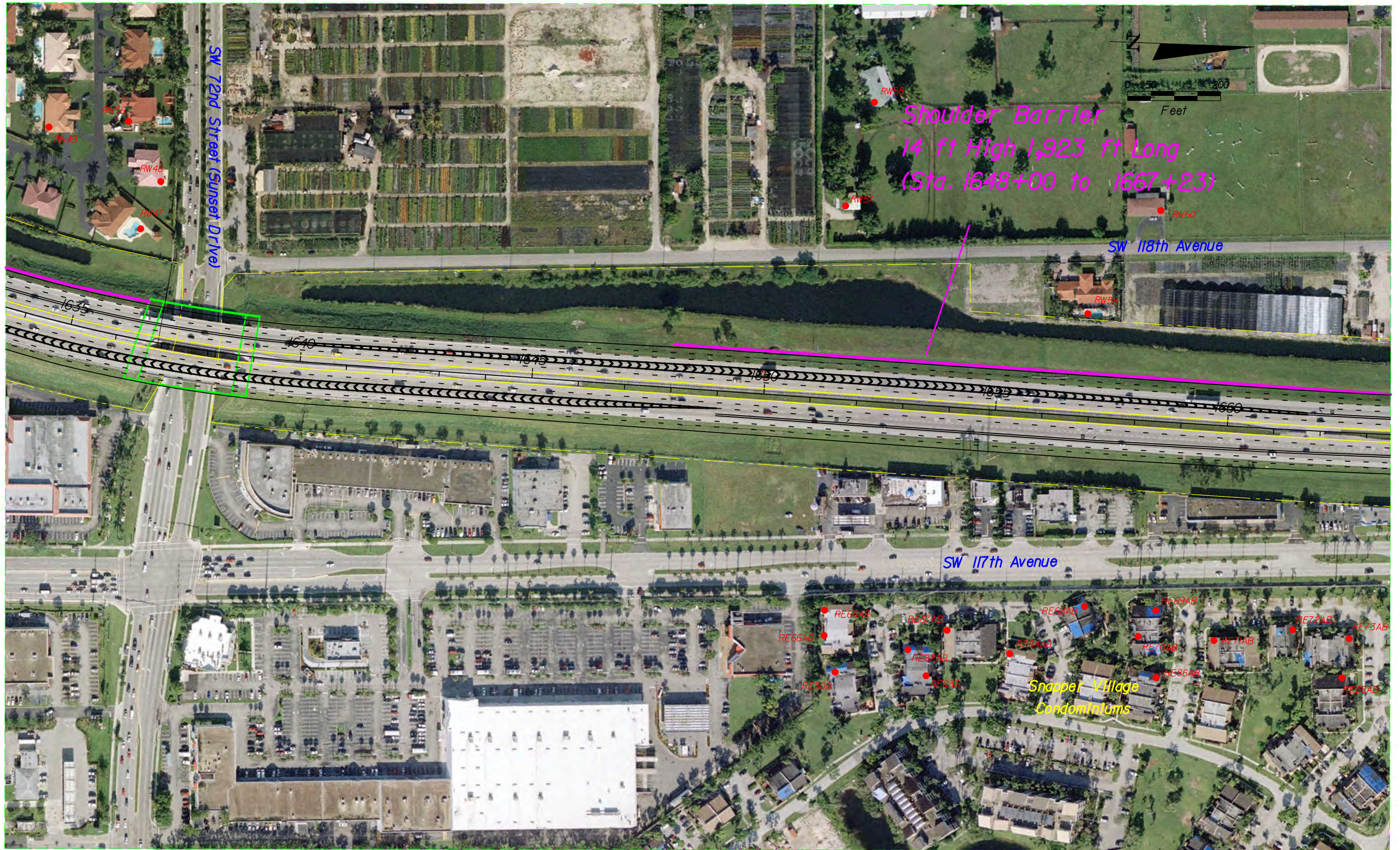
WIDENING FLORIDA'S TURNPIKE
S.R. 821 (H.E.F.T) FROM KILLIAN PARKWAY TO BIRD ROAD
(CPID 415051-1 & 427146-1) MIAMI-DADE COUNTY, FLORIDA



WIDENING FLORIDA'S TURNPIKE
S.R. 821 (H.E.F.T) FROM KILLIAN PARKWAY TO BIRD ROAD
(CPID 415051-1 & 427146-1) MIAMI-DADE COUNTY, FLORIDA

SHEET
NO.

4



**WIDENING FLORIDA'S TURNPIKE
S.R. 821 (H.E.F.T) FROM KILLIAN PARKWAY TO BIRD ROAD
(FPID 415051-1 & 427146-1) MIAMI-DADE COUNTY, FLORIDA**

SHEET NO.
5