



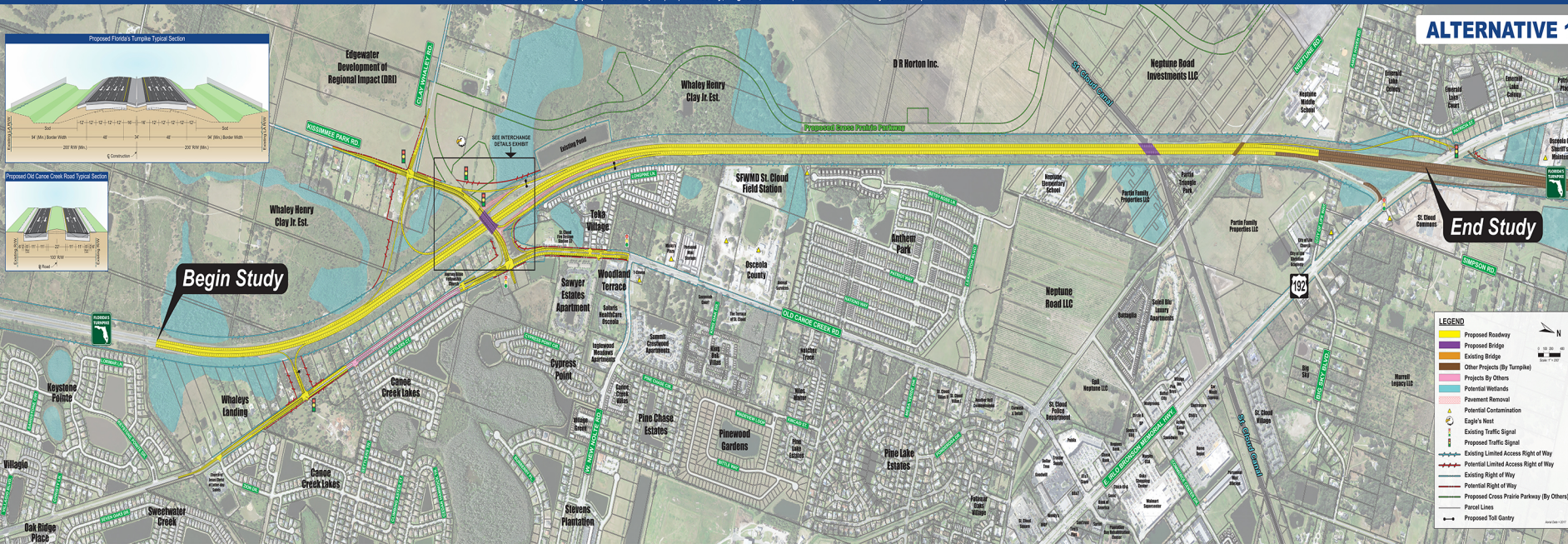
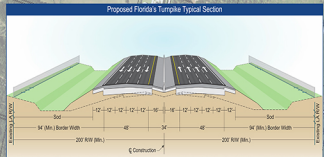
FLORIDA'S TURNPIKE (SR 91) WIDENING FROM SOUTH OF KISSIMMEE PARK ROAD TO US 192

Project Development and Environment (PD&E) Study | Mile Post 238.5 to Mile Post 242.5 | Osceola County, FL | Financial Project Identification Number: 441224-1 | Efficient Transportation Decision Making Number: 14329



Public Information Meeting (5:30 p.m. to 7:30 p.m.) | Tuesday, August 6, 2019 | St. Cloud Community Center | 3101 17th Street | St. Cloud, FL 34769

ALTERNATIVE 1



LEGEND

- Proposed Roadway
- Proposed Bridge
- Existing Bridge
- Other Projects (By Turnpike)
- Projects By Others
- Potential Wetlands
- Pavement Removal
- Potential Contamination
- Eagle's Nest
- Existing Traffic Signal
- Proposed Traffic Signal
- Existing Limited Access Right of Way
- Potential Limited Access Right of Way
- Existing Right of Way
- Potential Right of Way
- Proposed Cross Prairie Parkway (By Others)
- Parcel Lines
- Proposed Toll Gantry

Scale: 1" = 100' (0 to 400 feet)
North Arrow: N