

Utility Assessment Report

Project Development and Environment (PD&E) Study Florida's Turnpike (SR 91)

from South of Kissimmee Park Road to US 192
Mile Post 238.5 to Mile Post 242.5

Osceola County, Florida

FPID: 441224-1-22-01

Prepared By:

Omni Communications, Inc.

OMNI

*Surveying & Mapping • Subsurface Utility Engineering
Utility Coordination • Public Involvement*

October 2020

TABLE OF CONTENTS

	<u>PAGE</u>
1.0 Introduction	3
1.1 PURPOSE OF UTILITIES ASSESSMENT PACKAGE	3
1.2 PROJECT DESCRIPTION.....	3
1.3 PROPOSED BUILD ALTERNATIVES	3
2.0 Existing Utilities	6
2.1 Description of Existing Utilities and Estimated Relocation Costs.....	8
2.2 Florida Gas Transmission Agreements with FDOT.....	8
3.0 Utility Mitigation Cost	9

TABLES

Table 1: Utility Agency/Owner (UAO) Contact List.....	7
Table 2: Existing Utilities and Estimated Relocation Costs of Major Facilities.....	11

APPENDICES

Appendix 1	Sunshine 811 Design Tickets
Appendix 2	Utility Information Request
Appendix 3	Utility Responses/Information

1.0 INTRODUCTION

This project is a proposed widening of the Florida's Turnpike (SR 91) from south of Kissimmee Park Road to US 192. The study area of this Project Development and Environment (PD&E) Study includes Osceola County, Florida. The length of this project is a distance of approximately four miles.

1.1 Purpose of Utilities Assessment Package

This utilities assessment package has been assembled to provide information on the existing and planned utilities along potential Florida's Turnpike (SR 91) alignments within the limits described above. Identifying major utility facilities and the impacts to these facilities with the alternatives evaluated is the focus of this package. This package contains information on the names of utility companies, arials denoting the location of major existing and proposed facilities, descriptions of the identified utilities, project coordination efforts, potential impacts, and information on the cost of relocation.

1.2 Project Description

This PD&E Study includes an evaluation of alternatives to widen the Florida's Turnpike (SR 91) from south of Kissimmee Park Road to US 192. Florida's Turnpike (SR 91) is currently a four lane (two lanes in each direction) limited access facility. Alternatives include Build Alternatives, including with and without express lanes, and the No Build Alternative. The Alternatives include four general toll lanes in each direction and two general toll lanes with two express lanes in each direction.

1.3 Proposed Build Alternatives

Five Build Alternatives (along with a No-Build Alternative) were considered at the beginning of the PD&E study which included interchange improvements along the corridor. These alternatives included the No-Build Alternative and Alternatives 1, 2, 3a, 3b, and 4. Alternatives 1, 2, and 3a were eliminated during preliminary stages of traffic analysis as they did not meet future traffic needs and the Florida Department of Transportation (FDOT) Design Manual criteria.

Alternatives 3b and 4 were carried forward to further analysis for consideration and are currently the primary alternatives. Throughout the remainder of this section, Alternative 3b is referred to as Alternative 1 and Alternative 4 is referred to as Alternative 2, respectively, including in referenced attached exhibits.

Alternative 1 - Alternative 1 will add capacity to Florida's Turnpike (SR 91) through the addition of travel lanes from south of Kissimmee Park Road to US 192. Florida's Turnpike (SR 91) will be widened from the existing 4-lane section (2 lanes in each direction) to an ultimate 8-lane section (4 lanes in each direction). This alternative includes modifications to the existing Kissimmee Park Road interchange and direct connections between Florida's Turnpike (SR 91) and Old Canoe Creek Road, located approximately $\frac{3}{4}$ of a mile south of Kissimmee Park Road. The existing Kissimmee Park Road interchange currently provides northbound on-ramp and southbound off-ramp connections with Florida's Turnpike (SR 91). The interchange improvements will add a southbound on-ramp and northbound off-ramp, as well as modifications to the existing ramps. Alternative 1 also includes a proposed southbound on-ramp from US 192 at the location of the existing US 192 partial interchange.

Alternative 2 - Alternative 2 will add capacity to Florida's Turnpike (SR 91) through the addition of travel lanes from south of Kissimmee Park Road to US 192. Florida's Turnpike (SR 91) will be widened from the existing 4-lane section (2 lanes in each direction) to an ultimate 8-lane section (4 lanes in each direction). This alternative includes a proposed new Florida's Turnpike (SR 91) interchange at an extension of Nolte Road, located approximately $\frac{1}{2}$ of a mile north of Kissimmee Park Road. This new interchange will provide full access to and from Florida's Turnpike (SR 91). The existing ramps at the Kissimmee Park Road interchange will be removed, however the overpass will remain for local access. The proposed interchange features a diverging diamond configuration, which offers improved capacity with a smaller footprint. Direct connections between Florida's Turnpike (SR 91) and Old Canoe Creek Road will be located approximately $\frac{1}{2}$ of a mile south of Kissimmee Park Road. Alternative 2 also includes a proposed southbound on-ramp from US 192 to Florida's Turnpike (SR 91) at the location of the existing US 192 partial interchange.

Both alternatives, Alternatives 1 and 2, improve lane capacity by widening to the inside median, shifting drainage to the outside edge of the right-of-way boundary. No shift in alignment alternatives were considered, as the adjacent northern Florida's Turnpike (SR 91) segment of 4-lane to 8-lane widening is in final design and currently funded for construction.

Therefore, final alignment and alternatives connecting directly to the Florida's Turnpike (SR 91) widening associated with the Kissimmee Park Road segment have been evaluated by the Federal Highway Administration (FHWA) representatives at the FDOT. This segment is in the final permitting stages with both state and federal regulatory agencies. The final Location and Design Concept Approval (LDCA) was accepted in 2017 for this roadway segment. With these considerations, the chosen alignment, from south of Kissimmee Park Road to US 192, has been designed to align cohesively with the typical section in the abutting northern segment. An alignment match with the northern segment also ensures FDOT Design Manual standards are met according to profile requirements, sight distance safety, and that previous commitments to avoid impacts to existing Florida Gas and Transmission utility lines are followed, to the greatest extent possible.

The recommended Build Alternative, Alternative 2, addresses the operational issues of the existing Kissimmee Park Road interchange and accommodates the future travel demand by creating a new interchange approximately ½ mile north of Kissimmee Park Road. When compared to Alternative 1, additional right-of-way will be required for Alternative 2; however, Alternative 2 has fewer relocations than required for Alternative 1. Additionally, Alternative 2 has less environmental impacts and offers the lower total cost when compared to Alternative 1. A summary of these impacts is further described in the appropriate sections of the report below. The attendees at the Public Information Meeting held on August 6, 2019, who expressed a preference in a Build Alternative, overwhelmingly preferred Alternative 2 over Alternative 1 by a margin of 47 to 3.

The recommended Build Alternative, Alternative 2, includes the following features:

- Widening Florida's Turnpike (SR 91), to the median, from the existing 4-lane section (2 lanes in each direction) to an ultimate 8-lane section (4 lanes in each direction). The future horizontal alignment will match the existing horizontal alignment.
- New fully directional, diverging diamond interchange at Nolte Road.
- Extension of Nolte Road from east of Old Canoe Creek Road to west of Florida's Turnpike (SR 91), including intersection improvements at the Nolte Road / Old Canoe Creek intersection.
- The existing Kissimmee Park Road bridge over Florida's Turnpike (SR 91) will remain for local access, however the existing interchange ramps will be removed.
- Addition of a southbound off-ramp and northbound on-ramp to Florida's Turnpike (SR 91), with direct connections to Old Canoe Creek Road, located approximately ½ mile south of Kissimmee Park Road. The southbound off movement will require a flyover ramp bridge over Florida's Turnpike (SR 91) mainline.
- A southbound on-ramp from US 192 to Florida's Turnpike (SR 91) will be added at the existing US 192 partial interchange.
- The vertical profile of the Florida's Turnpike (SR 91) will be adjusted (raised) slightly to meet base clearance criteria over the seasonal high-water elevations. The bridges over the C-31 Canal will be replaced with one structure.

2.0 EXISTING UTILITIES

The existing and proposed major utilities located within the project limits were identified as part of this PD&E study. A list of existing utility companies within the project limits was obtained from Sunshine 811. The list of major existing utilities is summarized in Table 1.

Preliminary utility coordination was initiated with the utility agency owners (UAOs) through written communication to the utility contacts listed in Table 1. On August, 19, 2019, the UAOs were informed by email of the PD&E study and requested that they mark up the conceptual plans provided and provide information regarding the location, type and size of their existing and proposed facilities within the project limits (see Appendix 2). The UAOs were requested to note if their facilities were located within the FDOT right-of-way (R/W) or within easements and to provide an order-of-magnitude estimate for relocating any facilities affected by the proposed project.

As a result of the data collected and a design ticket from Sunshine 811, eleven utility companies were identified, none of which were Turnpike facilities. Existing UAO's are as followed AT&T Transmission, AT&T Florida, Bright House Networks/Charter, CenturyLink Local, CenturyLink National fka Level 3, City of St. Cloud Public Utilities, Comcast, Florida Gas Transmission (FGT), Florida Public Utilities, Summit fka Orlando Telephone Company, and Orlando Utilities Commission (OUC – Electric Distribution). One of these utility companies, Florida Public Utilities, indicated they do not have facilities within the limits of the study. Of the remaining ten, eight have potential conflicts between their facilities and the proposed project. Potential conflicts include buried fiber, buried copper, water main, gravity sewer main, force main, 20" natural gas pipeline (FGT), and overhead electric 25kv pole line. Joint users on overhead electric poles will likely follow any pole relocations proposed by Orlando Utilities Commission.

Based on the preferred Alternative 2 there are possible significant impacts, depending on the design, that could affect the overall project schedule. FGT has a 20" natural gas pipeline outside of Alternative 2, but it is advised to avoid any impacts to them for the project. Orlando Utilities Commission has overhead 25kv distribution lines with joint users that have the potential to be significantly impacted. If relocation is necessary for OUC the joint users will also have to relocate. City of St. Cloud has a 12" water main, 12" reclaim water main, 8" gravity sewer main, and an 8" force main within the preferred alternative. Depending on the design of the project and depth of the facilities there is potential for significant impact to City facilities. Multiple companies have buried fiber optic or copper communications within the preferred alternative that have potential for significant impacts based on design.

There are no plans by any Utility Agency/Owner (UAO) for upgraded and/or betterments of their facilities at this time.

Table 1: Utility Agency/Owner (UAO) Contact List

Utility	Representative	Phone Number	Email Address
AT&T Corporation - Transmission	Steve Eriksson	(407) 578-8000	seriksson@pea-inc.net
AT&T Florida - Distribution	Alan Reynolds	(407) 351-8180	ar2916@att.com
Bright House Networks / Charter - CATV	Todd Hudson	(407) 532-8510	Todd.hudson@charter.com
CenturyLink Legacy - Local Telephone	Ty Leslie	(407)-814-5293	michel.t.leslie@centurylink.com
City of St. Cloud - Public Utilities	Veronica Miller	(407) 957-7265	vmiller@stcloud.org
ComCast Communications - CATV	Cesar Rivera	(407) 849-3611	cesar_Rivera@cable.comcast.com
Florida Gas Transmission - Natural Gas	Joseph Sanchez	(407) 838-7171	joseph.e.sanchez@energytransfer.com
CenturyLink National / Level 3 aka Lumen	Xan Rypkema	(636) 887-4747	Relocations@lumen.com
Orlando Telephone Company / Summit Broadband	Aaron Pickle	(321) 356-2995	aaron.pickle@summit-broadband.com
Orlando Utilities Commission (OUC) - Electric	Robert Scheuerle	(407) 434-2107 D (407) 236-9651 O (407) 221-8597 C	developmentservices@ouc.com

2.1 Description of Existing Utilities and Estimated Relocation Costs

The UAO mark-ups depict the existing utilities location in the study limits and are provided in Appendix 3. Depending on their location and depth, the proposed improvements may require the adjustment of some or all of these utilities. A description of the existing facilities and the associated relocation costs are summarized in Table 2.

2.2 Florida Gas Transmission Agreements with FDOT

Agreement and Global Settlement

On August 21, 2013, Florida Gas Transmission (FGT) entered into an Agreement and Global Settlement with the Florida Department of Transportation (FDOT). A copy of the agreement, addendums, and amendments can be downloaded from:

- [Agreement and Global Settlement 8-21-2013](#)
- [Addendum to Agreement and Global Settlement 9-19-13](#)
- [First Amendment to Agreement and Global Settlement 1-20-2015](#)
- [Second Amendment to Global Settlement 9-2-16](#)

This Agreement shall have an initial term of ten (10) years, and shall automatically renew for successive five-year terms, unless either party provides notice to the other of its intent to terminate this Agreement not less than six months before the end of the then current term.

Natural Gas Pipeline Easement Agreement

The Natural Gas Pipeline Easement Agreement (Substitute Easement or Substitute Easement Agreement) was signed detailing the management of FGT's easements within the existing Turnpike right-of-way and can be downloaded from:

- [Natural Gas Pipeline Easement Agreement 8-21-2013](#)

This Agreement became effective August 21, 2013, herein supersedes and wholly replaces the Turnpike Easements until terminations of the Substitute Easement Agreement. The Turnpike Easements are suspended, but not terminated. However upon terminations of the Agreement and Global Settlement between FDOT and Florida Gas Transmission, the Substitute Easement Agreement will terminate and the Original Turnpike Easements shall govern.

3.0 UTILITY MITIGATION AND COST

Due to the nature of the existing conditions throughout the project corridor, it is anticipated that the Florida's Turnpike (SR 91) increased capacity and interchange improvements will impact a number of the existing utilities on the project.

Florida's Turnpike (SR 91)

Proposed southbound on ramp from US 192 potentially impacts the natural gas pipelines owned and operated by Florida Gas Transmission. In addition to fiber optic cable facilities owned and operated by AT&T Florida and CenturyLink National.

Proposed lane widening for increased capacity potentially impacts the fiber optic cable facilities owned and operated by AT&T Corporation. Depending on the extent of the proposed improvements at Neptune Road, there is a potential to impact the following utilities:

- Transmission/Distribution power lines and electric facilities for lighting owned and maintained by Orlando Utilities Commission
- Water, wastewater, and reclaimed water facilities owned and maintained by the City of St. Cloud.

Alternative 1 – Kissimmee Park Road Interchange Improvements

Proposed interchange improvements include alignment changes to the on and off ramps of Florida's Turnpike (SR 91) that potentially impact the following utilities:

- Pole lines and electric facilities owned and maintained by Orlando Utilities Commission.
- Water, wastewater, and reclaimed water facilities owned and maintained by the City of St. Cloud.
- Telephone and data facilities owned and maintained by CenturyLink Local and CenturyLink National.
- CATV facilities owned and maintained by Bright House Networks/Charter and Comcast Communications.
- Communications facilities owned and maintained by AT&T Corporation.

Alternative 2 – Nolte Road Extension Interchange Improvements

Proposed interchange improvements include alignment changes of Nolte Road with new on and off ramps accessing Florida's Turnpike (SR 91) that could potentially impact communications facilities owned and maintained by AT&T Corporation, which is placed along the northbound median.

Depending on the proposed road improvements, utilities in and along Old Canoe Creek Road could be greatly impacted. The utilities that have facilities located within this vicinity includes:

- City of St. Cloud
- CenturyLink Local
- CenturyLink National
- Bright House Networks/Charter
- Orlando Utilities Commission.

Mitigation measures should be taken during the design phase of the project to minimize impacts to the existing utilities to the fullest extent possible. If impacts are unavoidable, design alternatives should be reviewed to allow for relocation of impacted facilities in a manner that minimizes cost to the UAO and disruption to their customers.

Since relocations of facilities located in easements and on private property would likely be eligible for reimbursement, all measures will be taken to avoid impacting the existing utility facilities identified in easements or privately-owned parcels. Though relocation of other facilities within the existing right-of-way are anticipated, all efforts will be made during the design phase to minimize impacts to existing facilities, to the greatest extent possible.

Table 2: Existing Utilities and Estimated Relocation Costs of Major Facilities

Utility Agency/Owners	Description	Relocation Cost
AT&T Corporation-Transmission	<p>This utility has long haul fiber optic cable facilities that are buried within the study corridor.</p> <ul style="list-style-type: none"> Florida's Turnpike (SR 91) <ul style="list-style-type: none"> Buried fiber optic cable network consists of (2) 2-inch HDPE in a 10 feet easement. This easement is in the northbound median of Florida's Turnpike (SR 91), beginning from the south limits of this study and continuing to the north limits of this study. Not eligible for reimbursement. On 9/4/2019, Craig Petrie with P.E.A., Inc. stated that according to the Turnpike Agreement, the costs associated with first time relocation of AT&T facilities will not be reimbursable. Final determination will depend on the design plans. 	<p>Cost provided by Craig Petrie with P.E.A., Inc. on behalf of AT&T Corporation</p> <p>\$200,000</p>
AT&T Florida's-Distribution	<p>This utility has fiber optic cable facilities that are buried within the study corridor.</p> <ul style="list-style-type: none"> US 192 <ul style="list-style-type: none"> Buried fiber optic cable facilities are placed in the south right-of-way of US 192 and crosses Florida's Turnpike (SR 91), beginning from the west limits of this study and continuing to the east limits of this study. Not eligible for reimbursement. 	<p>Cost provided by UAO</p> <p>\$70,000</p>
Bright House Networks / Charter - CATV	<p>This utility has fiber optic cable and coax cable facilities placed within the study corridor.</p> <ul style="list-style-type: none"> These facilities are aerial and buried. Aerial cable facilities are attached to existing power company pole lines. Old Canoe Creek Road <ul style="list-style-type: none"> Aerial cable facilities are placed along the west right-of-way of Old Canoe Creek Road, beginning from the south limits of this study and continuing to the south side of Kissimmee Park Road. Buried cable facilities are placed along the west right-of-way of Old Canoe Creek Road, beginning from the south right-of-way of Kissimmee Park Road to the north limits of this study. Buried cable facilities crossing at Old Canoe Creek Road south of Nolte Road and proceed north along the east right-of-way to the south right-of-way of Nolte Road. Nolte Road <ul style="list-style-type: none"> Buried cable facilities are placed along the south right-of-way of Nolte Road, beginning at the east right-of-way of Old Canoe Creek Road to a few hundred feet east. Aerial cable facilities are placed along the south right-of-way of Nolte Road, beginning 250 feet east of Old Canoe Creek Road to the east limits of this study. Several buried crossings exist to provide service to customers on the north side of Nolte Road. Not eligible for reimbursement. 	<p>Cost provided by UAO</p> <p>Alt 1: \$150,000 Alt 2: \$112,000</p>

Table 2 Cont'd.: Existing Utilities and Estimated Relocation Costs of Major Facilities

Utility Agency/Owners	Description	Relocation Cost
CenturyLink National / Level 3 - Communications	<p>This utility has fiber optic cable facilities that are buried within the study corridor.</p> <ul style="list-style-type: none"> • Old Canoe Creek Road <ul style="list-style-type: none"> - Buried fiber optic cable facilities are placed in the west right-of-way of Old Canoe Creek Road from the south limits of this study. Proceed north in the west right-of-way of Old Canoe Creek Road. Proceed north to the north right of way of Kissimmee Park Road. Then proceed north at an angle crossing Old Canoe Creek Road to the east right-of-way. Then proceed north in east right-of-way of Old Canoe Creek Road to the north limits of this study. • US 192 <ul style="list-style-type: none"> - Buried fiber optic cable facilities are placed in the south right-of-way of US 192 and crosses Florida's Turnpike (SR 91), beginning from the west limits of this study and continuing to the east limits of this study. - Not eligible for reimbursement. 	TBD
CenturyLink Legacy- Local Telephone	<p>This utility has fiber optic cable and copper cable facilities that are buried within the study corridor.</p> <ul style="list-style-type: none"> • Kissimmee Park Road <ul style="list-style-type: none"> - Buried fiber optic cable facilities are placed in the north right-of-way of Kissimmee Park Road and crosses Florida's Turnpike (SR 91), beginning from the west limits of this study and continuing to the west right-of-way of Old Canoe Creek Road. • Old Canoe Creek Road <ul style="list-style-type: none"> - Buried fiber optic cable facilities are placed in the west right-of-way of Old Canoe Creek Road in the north right-of-way of Kissimmee Park Road to a crossing then crosses to the east right-of-way of Old Canoe Creek Road. Proceed north to the south right-of-way of Nolte Road, then cross to the west right-of-way of Old Canoe Creek Road. Proceed north to the north limits of this study. - Buried copper cable facilities are placed in the east and west right-of-ways of Old Canoe Creek Road from the south limits of this study to the south of Kissimmee Park Road. Buried copper cable facilities in the west right-of-way ends south of Kissimmee Park Road and the buried copper cable facilities in the east right-of-way continue to the south right-of-way of Nolte Road. - Buried copper cable crossings at 1,050 feet north of Kissimmee Park Road and at 1,450 feet north of Kissimmee Road to the north side of Teka Lane right-of-way. - Buried copper cable facilities at the southeast corner of Old Canoe Creek Road and Nolte Road, that proceed east along the south right-of-way of Nolte Road and proceed west, crossing Old Canoe Creek Road. Then proceed north along the west right-of-way of Old Canoe Creek Road to the north limits of this study. 	TBD

Table 2 Cont'd.: Existing Utilities and Estimated Relocation Costs of Major Facilities

Utility Agency/Owners	Description	Relocation Cost
CenturyLink Legacy - Local Telephone Cont'd	<ul style="list-style-type: none"> • Florida's Turnpike (SR 91) <ul style="list-style-type: none"> - Buried fiber optic cable facilities are placed in the west right-of-way of Old Canoe Creek Road, beginning from the north right-of-way of Kissimmee Park Road to the north limits of this study. - Buried copper facilities are in the east right-of-way of Florida's Turnpike (SR 91), beginning at 2,300 feet north of Kissimmee Park Road and crossing Florida's Turnpike (SR 91) at 2,700 feet north of Kissimmee Park Road. Then continues north another 200 feet along the west right-of-way of Florida's Turnpike (SR 91). • Nolte Road <ul style="list-style-type: none"> - Buried fiber optic cable facilities are placed in the north right-of-way of Kissimmee Park Road and crosses Florida's Turnpike (SR 91), beginning from the west limits of this study and continuing to the west right-of-way of Old Canoe Creek Road. - Buried copper cable facilities in the south right-of-way of Nolte Road from the east right-of-way of Old Canoe Creek Road to the east limits of this study. - Buried copper cable crossing at 400 feet east of Old Canoe Creek Road from the south right-of-way of Nolte Road to the north. Then proceed west in the north right-of-way to 300 feet. Also at same crossing, buried copper cable facilities proceed east 700 feet in the north right-of-way of Nolte Road. - Buried copper cable crossing at 1,100 feet east Old Canoe Creek Road, from the south right-of-way of Nolte Road to the north, then proceed east 320 feet in the north right-of-way of Nolte Road to the west right-of-way of Pine Chase Circle. • US 192 <ul style="list-style-type: none"> - The fiber optic cable facilities are placed in the north right-of-way of US 192 and crosses Florida's Turnpike (SR 91), beginning from the west limits of this study and continuing to the east limits of this study. - Not eligible for reimbursement. 	TBD
City of St. Cloud – Public Utilities	<p>This utility has water, wastewater (force main & gravity), and reclaimed water facilities within the study corridor.</p> <ul style="list-style-type: none"> • Neptune Road at Florida's Turnpike (SR 91) crossing <ul style="list-style-type: none"> - 12-inch HDPE water main placed in the north right-of-way of Neptune Road, crossing under Florida's Turnpike (SR 91). - 12-inch HDPE reclaimed water placed in the north right-of-way of Neptune Road, crossing under Florida's Turnpike (SR 91). - 8-inch HDPE force main placed in the north right-of-way of Neptune Road, crossing under Florida's Turnpike (SR 91). 	<p>Cost provided by UAO</p> <p>Neptune Road at SR 91 crossing: \$900,000</p> <p>Alt 1: \$5,350,000 Alt 2: \$3,400,000</p>

Table 2 Cont'd.: Existing Utilities and Estimated Relocation Costs of Major Facilities

Utility Agency/Owners	Description	Relocation Cost
City of St. Cloud - Public Utilities Cont'd	<ul style="list-style-type: none"> • Kissimmee Park Road <ul style="list-style-type: none"> - 24-inch DIP water main placed in the south right-of-way of Kissimmee Park Road. Proceeds east from the west limits of this study to east right-of-way of Old Canoe Creek Road. Crossing under Florida's Turnpike (SR 91) consists of a 48-inch DIP casing equipped with the 24-inch DIP water main. • 8-inch PVC force main in the south right-of-way of Kissimmee Park Road. Proceed east from the west limits of this study to center median of Old Canoe Creek Road. Crossing under Florida's Turnpike (SR 91) consists of an 8-inch HDPE. • Old Canoe Creek Road <ul style="list-style-type: none"> - 12-inch PVC water main placed in the west right-of-way of Old Canoe Creek Road, from the south limits of this study to 70 feet south of Settlers Trail. Crossing to east right-of-way of Old Canoe Creek Road, then proceed north to north right-of-way of Settlers Trail. A lateral proceeds east in right-of-way of Settlers Trail to the east limits of this study. - 12-inch PVC water main placed in the east right-of-way of Old Canoe Creek Road, from the north right-of-way of Settlers Trail to crossing to 50 feet north. Crossing to west right-of-way of Old Canoe Creek Road, then proceed north to 250 feet south of Kissimmee Park Road. - 12-inch PVC water main placed in the east right-of-way of Old Canoe Creek Road, from the east limits of this study, being 800 feet south of Kissimmee Park Road, then proceed north to the south right-of-way of Nolte Road. - 12-inch PVC water main placed in the east right-of-way of Old Canoe Creek Road, from the south right-of-way of Nolte Road to the north limits of this study. - 12-inch PVC reclaimed water placed in the east right-of-way of Old Canoe Creek Road, from the south limits of this study to south right-of-way of Settlers Trail. - 12-inch PVC reclaimed water placed in the east right-of-way of Old Canoe Creek Road, from the east limits of this study, being 800 feet south of Kissimmee Park Road. Then proceed at an angle north to the center median and continue to 200 feet north of Kissimmee Park Road. Then proceed at an angle north from the center median to the east right-of-way of Old Canoe Creek Road. Then proceed north to the south right-of-way of Nolte Road. - 12-inch PVC reclaimed water placed in the east right-of-way of Old Canoe Creek Road, from the south right-of-way of Nolte Road to the north limits of this study. 	See above

Table 2 Cont'd.: Existing Utilities and Estimated Relocation Costs of Major Facilities

Utility Agency/Owners	Description	Relocation Cost
City of St. Cloud - Public Utilities Cont'd	<ul style="list-style-type: none"> • Old Canoe Creek Road Cont'd <ul style="list-style-type: none"> - 8-inch PVC force main placed in the east right-of-way of Old Canoe Creek Road, from the east limits of this study, being 800 feet south of Kissimmee Park Road. Then proceed at an angle north to the center median and continue to 200 feet north of Kissimmee Park Road. Then proceed at an angle north from the center median to the east right-of-way of Old Canoe Creek Road. Then proceed north to the north of Sawyer Circle. - 16-inch PVC force main placed in the west right-of-way of Old Canoe Creek Road, from south of Nolte Road to the north limits of this study. - 8-inch PVC gravity main placed in the west right-of-way of Old Canoe Creek Road, from north right-of-way of Nolte Road to the north limits of this study. • Nolte Road <ul style="list-style-type: none"> - 12-inch PVC water main placed in the south right-of-way of Nolte Road from the east right-of-way of Old Canoe Creek Road to the east limits of this study. - 12-inch PVC reclaimed water placed in the north right-of-way of Nolte Road from the east right-of-way of Old Canoe Creek Road to the east limits of this study. - 16-inch PVC force main placed in the north right-of-way of Nolte Road from the west right-of-way of Old Canoe Creek Road to the east limits of this study. - 8-inch PVC gravity main placed in the north right-of-way of Nolte Road from the west right-of-way of Old Canoe Creek Road to the east limits of this study. - Not eligible for reimbursement. 	See above
ComCast Communications - CATV	<p>This utility has fiber optic cable and coax cable facilities placed within the study corridor.</p> <ul style="list-style-type: none"> - These facilities are aerial and buried. - Aerial cable facilities are attached to existing power company pole lines. • Old Canoe Creek Road <ul style="list-style-type: none"> - Aerial cable facilities are placed along the west right-of-way of Old Canoe Creek Road, beginning from the south limits of this study and continuing to the south side of Kissimmee Park Road. - Buried cable facilities are placed along the west right-of-way of Old Canoe Creek Road, beginning from the south right-of-way of Kissimmee Park Road and proceeding east. • Kissimmee Park Road <ul style="list-style-type: none"> - Buried fiber optic cable facilities are placed in the south right-of-way of Kissimmee Park Road and proceeds west crossing Florida's Turnpike (SR 91) and continuing to the west limits of this study. - Not eligible for reimbursement. 	TBD

Table 2 Cont'd.: Existing Utilities and Estimated Relocation Costs of Major Facilities

Utility Agency/Owners	Description	Relocation Cost
Florida Gas Transmission – Natural Gas	<p>This utility has two high pressure natural gas transmission pipelines placed within the study corridor.</p> <ul style="list-style-type: none"> Florida's Turnpike (SR 91) <ul style="list-style-type: none"> 30-inch natural gas transmission pipeline from the east limits of this study and proceeds west, crossing Florida's Turnpike (SR 91) at 2,100 feet south of US 192. Then proceeds north running parallel to the west right-of-way of Florida's Turnpike (SR 91), crossing US 192 and continuing to the north limits of this study. US 192 <ul style="list-style-type: none"> 20-inch natural gas transmission pipeline is placed in an easement along the south right-of-way of US 192, from the east limits of this study and proceeds west crossing Florida's Turnpike (SR 91) and continuing to 300 feet west of Florida's Turnpike (SR 91). Then proceeds north, crossing US 192 and continuing to the north limits of this study. Eligible for reimbursement. See Section 2.2. 	TBD
Orlando Telephone Company / Summit Broadband	<p>This utility received a request to provide their facility information within the study limits and was provided project alignment plans, which included 2 alternative interchange involvements. This utility provided a response stating that they have no facilities within the limits of this study.</p>	TBD
Orlando Utilities Commission (OUC) - Electric	<p>This utility has aerial and buried electric distribution facilities placed within the study corridor.</p> <ul style="list-style-type: none"> Old Canoe Creek Road <ul style="list-style-type: none"> Aerial 3-Phase 25kV electric distribution line is attached to wood poles. These facilities are placed in the west right-of-way of Old Canoe Creek Road from the south limits of this study to the south of Kissimmee Park Road. Then proceed east across Old Canoe Creek Road to the east right-of-way. Then proceed north in the west right-of-way of Old Canoe Creek Road for a distance of 530 feet. Then proceed in a northwest direction for a distance of 207 feet, crossing Old Canoe Creek Road to the west right-of-way of Old Canoe Creek Road. Then proceed north in the west right-of-way of Old Canoe Creek Road for a distance of 280 feet. Then proceeds east across Old Canoe Creek Road to the east right-of-way. Then proceed north in the east right-of-way of Old Canoe Creek Road for a distance of 985 feet. Then proceed west across Old Canoe Creek Road to the west right-of-way. Then proceed north in the west right-of-way of Old Canoe Creek Road to the north limits of this study. 	TBD

Table 2 Cont'd.: Existing Utilities and Estimated Relocation Costs of Major Facilities

Utility Agency/Owners	Description	Relocation Cost
Orlando Utilities Commission Cont'd	<ul style="list-style-type: none"> • Kissimmee Park Road <ul style="list-style-type: none"> - Buried 3-Phase 25kV electric distribution line from a wood power pole to the south of Kissimmee Park Road. Then proceed north 50 feet to the south right-of-way of Kissimmee Park Road. Then proceed west in the south right-of-way of Kissimmee Park Road for a distance of 1,325 feet, which crosses Florida's Turnpike (SR 91) and continues to a wood power pole in the east right-of-way of Kissimmee Park Road. South right-of-way of Kissimmee Park Road becomes the east right-of-way due to curve in road. - Aerial 3-Phase 25kV electric distribution line from wood power pole in east right-of-way of Kissimmee Park Road, being 800 feet west/south of right-of-way of Florida's Turnpike (SR 91). Then proceed west to across Kissimmee Park Road. Then proceed south to the south limits of this study. - Buried 3-Phase 25kV electric distribution line from a wood power pole in the east right-of-way of Kissimmee Park Road, being 725 feet from the southbound off ramp of Florida's Turnpike (SR 91). Then proceed north in the east/north right-of-way of Kissimmee Park Road for a distance of 700 feet to the west right-of-way of the southbound off ramp of Florida's Turnpike (SR 91). • Florida's Turnpike (SR 91) <ul style="list-style-type: none"> - Buried 3-Phase 25kV electric distribution in the north right-of-way of Kissimmee Park Road then proceed north in the west right-of-way of the southbound off ramp of Florida's Turnpike (SR 91) for a distance of 870 feet to a transformer. Then proceed east across Florida's Turnpike (SR 91) to a transformer in the east right-of-way of the northbound on ramp of Florida's Turnpike (SR 91). - Aerial 3-Phase 25kV electric distribution line on wood power poles crossing Florida's Turnpike (SR 91), being 800 feet south of Florida's Turnpike (SR 91). • Neptune Road at Florida's Turnpike (SR 91) crossing <ul style="list-style-type: none"> - Aerial 3-Phase 69kV electric transmission line on steel power poles crossing Florida's Turnpike (SR 91) along the south side of Neptune Road. - Aerial 2-wire 120v for street lights on wood poles along the north side of Neptune Road and stops before overpass at Florida's Turnpike (SR 91). • US 192 <ul style="list-style-type: none"> - Buried single phase electric distribution line from the east limit of this study to 150 feet west of St. Cloud Commons in the north right-of-way of US 192. - Not eligible for reimbursement. 	TBD

Florida Public Utilities is listed on the Sunshine 811 ticket, however their facilities are outside the limits of this study. Their facilities are northeast of SR 91 & US 192.

DRAFT

Appendix 1

Sunshine 811 Design Tickets

Ticket : 226913877 Rev:000 Taken: 08/14/19 17:21ET

State: FL Cnty: OSCEOLA GeoPlace: ST CLOUD

CallerPlace: ST CLOUD

Subdivision:

Address :

Street : SR 91

Cross 1 : US 192

Within 1/4 mile: Y

Cross 2 : KISSIMMEE PARK RD

Locat: DESIGN LOCATE R/O/W TO R/O/W ON SR 91 FROM THE OVERPASS OF US 192 TO 4050' SOUTH OF KISSIMMEE PARK RD

:

Remarks : 10/9/2018 11:38:31 AM LCA395 HAS DECLARED EXTRAORDINARY CIRCUMSTANCES

IN RESPONSE TO RECEIPT OF A DESIGN TICKET, SSOCOF PROVIDES THE ORIGINATOR OF THE DESIGN TICKET WITH A LIST OF SSOCOF MEMBERS IN THE VICINITY OF THE DESIGN PROJECT. SSOCOF DOES NOT NOTIFY SSOCOF MEMBERS OF THE RECEIPT BY SSOCOF OF A DESIGN TICKET. IT IS THE SOLE RESPONSIBILITY OF THE DESIGN ENGINEER TO CONTACT SSOCOF MEMBERS TO REQUEST INFORMATION ABOUT THE LOCATION OF SSOCOF MEMBERS' UNDERGROUND FACILITIES. SUBMISSION OF A DESIGN TICKET WILL NOT SATISFY THE REQUIREMENT OF CHAPTER 556, FLORIDA STATUTES, TO NOTIFY SSOCOF OF AN INTENT TO EXCAVATE OR DEMOLISH. THAT INTENT MUST BE MADE KNOWN SPECIFICALLY TO SSOCOF IN THE MANNER REQUIRED BY LAW. IN AN EFFORT TO SAVE TIME ON FUTURE CALLS, SAVE YOUR DESIGN TICKET NUMBER IF YOU INTEND TO BEGIN EXCAVATION WITHIN 90 DAYS OF YOUR DESIGN REQUEST. THE DESIGN TICKET CAN BE REFERENCED , AND THE INFORMATION ON IT CAN BE USED TO SAVE TIME WHEN YOU CALL IN THE EXCAVATION REQUEST.

*** LOOKUP BY MANUAL ***

:

Grids	: 2812A8118A	2812A8118B	2812A8118C	2812B8118B	2812B8118C
Grids	: 2813A8119B	2813A8119C	2813B8119C	2813B8119D	2813C8118A
Grids	: 2813C8119C	2813C8119D	2813D8118A	2813D8118B	2813D8119D
Grids	: 2814A8119A	2814A8119B	2814B8119A	2814B8119B	2814B8119C
Grids	: 2814C8119B	2814C8119C	2814D8119B	2814D8119C	2815A8119A
Grids	: 2815A8120D	2815B8119A	2815B8120D	2815C8119A	2815C8119B
Grids	: 2815C8120D	2815D8119A	2815D8119B	2816D8119A	2816D8120D

Work date: 08/14/19 Time: 17:26ET Hrs notc: 000 Category: 6 Duration: 07 DAYS

Due Date : 08/16/19 Time: 23:59ET Exp Date : 09/13/19 Time: 23:59ET

Work type: DESIGN Boring: N White-lined: N

Ug/Oh/Both: U Machinery: N Depth: 4 Permits: U N/A

Done for : DESIGN

Company : OMNI COMMUNICATIONS Type: CONT

Co addr : 8509 BENJAMIN RD

Co addr2: SUITE E

City : TAMPA State: FL Zip: 33634

Caller : LLOYD NORRIS Phone: 813-852-1888

BestTime: 8AM - 5PM

Email : LNORRIS@OMNI-COMMUNICATIONS.COM

Submitted: 08/14/19 17:21ET Oper: LLO Chan: WEB

Mbrs : ATTF01 CFLGAS CSC574 CVCFTV FG1442 L3C900 LCA395 LS1104 OC1586 OUC582

Mbrs : OUC613 SB2186 SBF02 UTI297

Service Area Code	Service Area Name	Contact	Phone Numbers	Utility Type
ATTF01	AT T	NANCY	Day: (770) 918 - 5424	FIBER,

		SPENCE		COMMUNICATION LINES
CFLGAS	FLORIDA PUBLIC UTILITIES	GARY HARDY	Day: (863) 224 - 3786	GAS
CSC574	C/O ST CLOUD W/WW LINE SYSTEMS DIVISION	RICK MAURO	Day: (407) 957 - 7341 Alt: (407) 709 - 3257	RECLAIMED WATER, WATER, SEWER
CVCFTV	CHARTER COMMUNICATIONS	MARVIN USRY JR	Day: (407) 532 - 8509 Alt: (407) 448 - 5506	FIBER, TELEPHONE, CATV
FG1442	FLORIDA GAS TRANSMISSION - DAVENPORT	JOSEPH E. SANCHEZ	Day: (407) 838 - 7171 Emerg: (407) 397 - 9230	GAS
L3C900	CENTURYLINK	NETWORK RELATIONS	Day: (877) 366 - 8344 x2	FIBER
LCA395	COMCAST COMMUNICATIONS/PREV LK CNTY CBLV	WADE MATHEWS	Day: (352) 516 - 3824	CATV
OC1586	OSCEOLA COUNTY TRAFFIC	JACK LOTT	Day: (407) 742 - 7534	FIBER, TRAFFIC LIGHTS
OUC582	ORLANDO UTILITIES COMMISSION - ELECTRIC	RONALD HAWKINS	Day: (407) 434 - 2569 Alt: (582) 613 - 1579	ELECTRIC
OUC613	ORLANDO UTILITIES COMMISSION - TRANSMISSION	USIC DISPATCH	Day: (800) 778 - 9140	FIBER, TRANSMISSION
SBF02	A T & T/ DISTRIBUTION	DINO FARRUGGIO	Day: (561) 997 - 0240	TELEPHONE
UTI297	CENTURYLINK WINTER GARDEN	TY LESLIE	Day: (407) 814 - 5293	FIBER, TELEPHONE

Ticket : 277904905 Rev:000 Taken: 10/04/19 11:20ET

State: FL Cnty: OSCEOLA GeoPlace: ST CLOUD

CallerPlace: ST CLOUD

Subdivision:

Address :

Street : KISSIMMEE PARK RD

Cross 1 : OLD CANOE CREEK RD

Within 1/4 mile: Y

Locat: DESIGN LOCATE BOTH SIDES OF KISSIMMEE PARK ROAD AND OLD CANOE CREEK ROAD
R/O/W TO R/O/W 400' RADIUS

:

Remarks : IN RESPONSE TO RECEIPT OF A DESIGN TICKET, SSOCOF PROVIDES THE ORIGINATOR OF THE DESIGN TICKET WITH A LIST OF SSOCOF MEMBERS IN THE VICINITY OF THE DESIGN PROJECT. SSOCOF DOES NOT NOTIFY SSOCOF MEMBERS OF THE RECEIPT BY SSOCOF OF A DESIGN TICKET. IT IS THE SOLE RESPONSIBILITY OF THE DESIGN ENGINEER TO CONTACT SSOCOF MEMBERS TO REQUEST INFORMATION ABOUT THE LOCATION OF SSOCOF MEMBERS' UNDERGROUND FACILITIES. SUBMISSION OF A DESIGN TICKET WILL NOT SATISFY THE REQUIREMENT OF CHAPTER 556, FLORIDA STATUTES, TO NOTIFY SSOCOF OF AN INTENT TO EXCAVATE OR DEMOLISH. THAT INTENT MUST BE MADE KNOWN SPECIFICALLY TO SSOCOF IN THE MANNER REQUIRED BY LAW. IN AN EFFORT TO SAVE TIME ON FUTURE CALLS, SAVE YOUR DESIGN TICKET NUMBER IF YOU INTEND TO BEGIN EXCAVATION WITHIN 90 DAYS OF YOUR DESIGN REQUEST. THE DESIGN TICKET CAN BE REFERENCED , AND THE INFORMATION ON IT CAN BE USED TO SAVE TIME WHEN YOU CALL IN THE EXCAVATION REQUEST.

*** LOOKUP BY MANUAL ***

:

Grids : 2813C8118A 2813C8119D 2813D8118A

Work date: 10/04/19 Time: 11:24ET Hrs notc: 000 Category: 6 Duration: UNKNOWN

Due Date : 10/08/19 Time: 23:59ET Exp Date : 11/04/19 Time: 23:59ET

Work type: DESIGN Boring: N White-lined: N

Ug/Oh/Both: U Machinery: N Depth: 0 Permits: U N/A

Done for : DESIGN

Company : OMNI COMMUNICATIONS Type: CONT

Co addr : 8509 BENJAMIN RD

Co addr2: SUITE E

City : TAMPA State: FL Zip: 33634

Caller : LLOYD NORRIS Phone: 813-852-1888

BestTime: 8AM - 5PM

Email : LNORRIS@OMNI-COMMUNICATIONS.COM

Submitted: 10/04/19 11:20ET Oper: LLO Chan: WEB

Mbrs : ATTF01 CNTL01 CSC574 CVCFTV L3C900 LCA395 LS1104 OC1586 OUC582 OUC613

Service Area Code	Service Area Name	Contact	Phone Numbers	Utility Type
ATTF01	AT T	STEVE HAMER / MIKE GAMBOA	Day: (813) 888 - 8300 x201 Alt: (813) 888 - 8300 x202	FIBER, COMMUNICATION LINES
CNTL01	CENTURYLINK	BILL MCCLOUD	Day: (850) 599 - 1444	FIBER, TELEPHONE
CSC574	C/O ST CLOUD W/WW LINE SYSTEMS DIVISION	RICK MAURO	Day: (407) 957 - 7341	RECLAIMED WATER, WATER,

			Alt: (407) 709 - 3257	SEWER
CVCFTV	CHARTER COMMUNICATIONS	MARVIN USRY JR	Day: (407) 532 - 8509 Alt: (407) 448 - 5506	FIBER, TELEPHONE, CATV
L3C900	CENTURYLINK	NETWORK RELATIONS	Day: (877) 366 - 8344 x2	FIBER
LCA395	COMCAST COMMUNICATIONS/PREV LK CNTY CBLV	WADE MATHEWS	Day: (352) 516 - 3824	CATV
OC1586	OSCEOLA COUNTY TRAFFIC	JACK LOTT	Day: (407) 742 - 7534	FIBER, TRAFFIC LIGHTS
OUC582	ORLANDO UTILITIES COMMISSION - ELECTRIC	RONALD HAWKINS	Day: (407) 434 - 2569 Alt: (582) 613 - 1579	ELECTRIC
OUC613	ORLANDO UTILITIES COMMISSION - TRANSMISSION	USIC DISPATCH	Day: (800) 778 - 9140	FIBER, TRANSMISSION

Ticket : 226914269 Rev:000 Taken: 08/14/19 18:20ET

State: FL Cnty: OSCEOLA GeoPlace: ST CLOUD
 CallerPlace: ST CLOUD
 Subdivision:

Address :
 Street : OLD CANOE CREEK RD
 Cross 1 : TEKA LN
 Within 1/4 mile: Y
 Cross 2 : KING OAK CIR

Locat: DESIGN LOCATE BOTH SIDES OF OLD CANOE CREEK RD R/O/W TO R/O/W FROM TEKA
 LANE TO KING OAK CIR

:
 Remarks : 10/9/2018 11:38:31 AM LCA395 HAS DECLARED EXTRAORDINARY
 CIRCUMSTANCES

IN RESPONSE TO RECEIPT OF A DESIGN TICKET, SSOCOF PROVIDES THE ORIGINATOR OF
 THE DESIGN TICKET WITH A LIST OF SSOCOF MEMBERS IN THE VICINITY OF THE
 DESIGN PROJECT. SSOCOF DOES NOT NOTIFY SSOCOF MEMBERS OF THE RECEIPT BY
 SSOCOF OF A DESIGN TICKET. IT IS THE SOLE RESPONSIBILITY OF THE DESIGN
 ENGINEER TO CONTACT SSOCOF MEMBERS TO REQUEST INFORMATION ABOUT THE
 LOCATION OF SSOCOF MEMBERS' UNDERGROUND FACILITIES. SUBMISSION OF A
 DESIGN TICKET WILL NOT SATISFY THE REQUIREMENT OF CHAPTER 556, FLORIDA
 STATUTES, TO NOTIFY SSOCOF OF AN INTENT TO EXCAVATE OR DEMOLISH. THAT
 INTENT MUST BE MADE KNOWN SPECIFICALLY TO SSOCOF IN THE MANNER REQUIRED BY
 LAW. IN AN EFFORT TO SAVE TIME ON FUTURE CALLS, SAVE YOUR DESIGN TICKET
 NUMBER IF YOU INTEND TO BEGIN EXCAVATION WITHIN 90 DAYS OF YOUR DESIGN
 REQUEST. THE DESIGN TICKET CAN BE REFERENCED , AND THE INFORMATION ON IT
 CAN BE USED TO SAVE TIME WHEN YOU CALL IN THE EXCAVATION REQUEST.

*** LOOKUP BY BETWEEN ***

:
 Grids : 2813A8119D 2813B8118A 2813B8119D

Work date: 08/14/19 Time: 18:24ET Hrs notc: 000 Category: 6 Duration: 07 DAYS
 Due Date : 08/16/19 Time: 23:59ET Exp Date : 09/13/19 Time: 23:59ET
 Work type: DESIGN Boring: N White-lined: N
 Ug/Oh/Both: U Machinery: N Depth: 4 Permits: U N/A
 Done for : DESIGN

Company : OMNI COMMUNICATIONS Type: CONT
 Co addr : 8509 BENJAMIN RD
 Co addr2: SUITE E
 City : TAMPA State: FL Zip: 33634
 Caller : LLOYD NORRIS Phone: 813-852-1888
 BestTime: 8AM - 5PM
 Email : LNORRIS@OMNI-COMMUNICATIONS.COM

Submitted: 08/14/19 18:20ET Oper: LLO Chan: WEB
 Mbrs : CSC574 CVCFTV L3C900 LS1104 OC1586 OUC582 UTI297

Service Area Code	Service Area Name	Contact	Phone Numbers	Utility Type
CSC574	C/O ST CLOUD W/WW LINE SYSTEMS DIVISION	RICK MAURO	Day: (407) 957 - 7341 Alt: (407) 709 - 3257	RECLAIMED WATER, WATER, SEWER
CVCFTV	CHARTER COMMUNICATIONS	MARVIN USRY JR	Day: (407) 532 - 8509 Alt: (407) 448 - 5506	FIBER, TELEPHONE, CATV

L3C900	CENTURYLINK	NETWORK RELATIONS	Day: (877) 366 - 8344 x2	FIBER
OC1586	OSCEOLA COUNTY TRAFFIC	JACK LOTT	Day: (407) 742 - 7534	FIBER, TRAFFIC LIGHTS
OUC582	ORLANDO UTILITIES COMMISSION - ELECTRIC	RONALD HAWKINS	Day: (407) 434 - 2569 Alt: (582) 613 - 1579	ELECTRIC
UTI297	CENTURYLINK WINTER GARDEN	TY LESLIE	Day: (407) 814 - 5293	FIBER, TELEPHONE

DRAFT

Ticket : 226914173 Rev:000 Taken: 08/14/19 18:04ET

State: FL Cnty: OSCEOLA GeoPlace: ST CLOUD

CallerPlace: ST CLOUD

Subdivision:

Address :

Street : W NEW NOLTE RD

Cross 1 : OLD CANOE CREEK RD

Within 1/4 mile: Y

Cross 2 : CYPRESS POINT CIR

Locat: DESIGN LOCATE BOTH SIDES OF NEW NOLTE RD R/O/W TO R/O/W FROM OLD CANOE CREEK RD TO CYPRESS POINT CIR

:

Remarks : 10/9/2018 11:38:31 AM LCA395 HAS DECLARED EXTRAORDINARY CIRCUMSTANCES

IN RESPONSE TO RECEIPT OF A DESIGN TICKET, SSOCOF PROVIDES THE ORIGINATOR OF THE DESIGN TICKET WITH A LIST OF SSOCOF MEMBERS IN THE VICINITY OF THE DESIGN PROJECT. SSOCOF DOES NOT NOTIFY SSOCOF MEMBERS OF THE RECEIPT BY SSOCOF OF A DESIGN TICKET. IT IS THE SOLE RESPONSIBILITY OF THE DESIGN ENGINEER TO CONTACT SSOCOF MEMBERS TO REQUEST INFORMATION ABOUT THE LOCATION OF SSOCOF MEMBERS' UNDERGROUND FACILITIES. SUBMISSION OF A DESIGN TICKET WILL NOT SATISFY THE REQUIREMENT OF CHAPTER 556, FLORIDA STATUTES, TO NOTIFY SSOCOF OF AN INTENT TO EXCAVATE OR DEMOLISH. THAT INTENT MUST BE MADE KNOWN SPECIFICALLY TO SSOCOF IN THE MANNER REQUIRED BY LAW. IN AN EFFORT TO SAVE TIME ON FUTURE CALLS, SAVE YOUR DESIGN TICKET NUMBER IF YOU INTEND TO BEGIN EXCAVATION WITHIN 90 DAYS OF YOUR DESIGN REQUEST. THE DESIGN TICKET CAN BE REFERENCED , AND THE INFORMATION ON IT CAN BE USED TO SAVE TIME WHEN YOU CALL IN THE EXCAVATION REQUEST.

*** LOOKUP BY BETWEEN ***

:

Grids : 2813A8118A 2813B8118A 2813B8118B 2813B8119D

Work date: 08/14/19 Time: 18:08ET Hrs notc: 000 Category: 6 Duration: 07 DAYS

Due Date : 08/16/19 Time: 23:59ET Exp Date : 09/13/19 Time: 23:59ET

Work type: DESIGN Boring: N White-lined: N

Ug/Oh/Both: U Machinery: N Depth: 4 Permits: U N/A

Done for : DESIGN

Company : OMNI COMMUNICATIONS Type: CONT

Co addr : 8509 BENJAMIN RD

Co addr2: SUITE E

City : TAMPA State: FL Zip: 33634

Caller : LLOYD NORRIS Phone: 813-852-1888

BestTime: 8AM - 5PM

Email : LNORRIS@OMNI-COMMUNICATIONS.COM

Submitted: 08/14/19 18:04ET Oper: LLO Chan: WEB

Mbrs : CSC574 CVCFTV L3C900 LS1104 OC1586 OUC582 UTI297

Service Area Code	Service Area Name	Contact	Phone Numbers	Utility Type
CSC574	C/O ST CLOUD W/WW LINE SYSTEMS DIVISION	RICK MAURO	Day: (407) 957 - 7341 Alt: (407) 709 - 3257	RECLAIMED WATER, WATER, SEWER
CVCFTV	CHARTER COMMUNICATIONS	MARVIN USRY JR	Day: (407) 532 - 8509 Alt: (407) 448 - 5506	FIBER, TELEPHONE, CATV

L3C900	CENTURYLINK	NETWORK RELATIONS	Day: (877) 366 - 8344 x2	FIBER
OC1586	OSCEOLA COUNTY TRAFFIC	JACK LOTT	Day: (407) 742 - 7534	FIBER, TRAFFIC LIGHTS
OUC582	ORLANDO UTILITIES COMMISSION - ELECTRIC	RONALD HAWKINS	Day: (407) 434 - 2569 Alt: (582) 613 - 1579	ELECTRIC
UTI297	CENTURYLINK WINTER GARDEN	TY LESLIE	Day: (407) 814 - 5293	FIBER, TELEPHONE

DRAFT

Ticket : 226913955 Rev:000 Taken: 08/14/19 17:28ET

State: FL Cnty: OSCEOLA GeoPlace: ST CLOUD

CallerPlace: ST CLOUD

Subdivision:

Address :

Street : SR 91

Cross 1 : US 192

Within 1/4 mile: Y

Locat: DESIGN LOCATE BOTH SIDES OF THE INTERSECTION OF SR 91 AND US 192 R/O/W
TO R/O/W IN 400' RADIUS

:

Remarks : 10/9/2018 11:38:31 AM LCA395 HAS DECLARED EXTRAORDINARY
CIRCUMSTANCES

IN RESPONSE TO RECEIPT OF A DESIGN TICKET, SSOCOF PROVIDES THE ORIGINATOR OF
THE DESIGN TICKET WITH A LIST OF SSOCOF MEMBERS IN THE VICINITY OF THE
DESIGN PROJECT. SSOCOF DOES NOT NOTIFY SSOCOF MEMBERS OF THE RECEIPT BY
SSOCOF OF A DESIGN TICKET. IT IS THE SOLE RESPONSIBILITY OF THE DESIGN
ENGINEER TO CONTACT SSOCOF MEMBERS TO REQUEST INFORMATION ABOUT THE
LOCATION OF SSOCOF MEMBERS' UNDERGROUND FACILITIES. SUBMISSION OF A
DESIGN TICKET WILL NOT SATISFY THE REQUIREMENT OF CHAPTER 556, FLORIDA
STATUTES, TO NOTIFY SSOCOF OF AN INTENT TO EXCAVATE OR DEMOLISH. THAT
INTENT MUST BE MADE KNOWN SPECIFICALLY TO SSOCOF IN THE MANNER REQUIRED BY
LAW. IN AN EFFORT TO SAVE TIME ON FUTURE CALLS, SAVE YOUR DESIGN TICKET
NUMBER IF YOU INTEND TO BEGIN EXCAVATION WITHIN 90 DAYS OF YOUR DESIGN
REQUEST. THE DESIGN TICKET CAN BE REFERENCED , AND THE INFORMATION ON IT
CAN BE USED TO SAVE TIME WHEN YOU CALL IN THE EXCAVATION REQUEST.

*** LOOKUP BY MANUAL ***

:

Grids : 2815A8119A 2815A8120D

Work date: 08/14/19 Time: 17:34ET Hrs notc: 000 Category: 6 Duration: 07 DAYS

Due Date : 08/16/19 Time: 23:59ET Exp Date : 09/13/19 Time: 23:59ET

Work type: DESIGN Boring: N White-lined: N

Ug/Oh/Both: U Machinery: N Depth: 4 Permits: U N/A

Done for : DESIGN

Company : OMNI COMMUNICATIONS Type: CONT

Co addr : 8509 BENJAMIN RD

Co addr2: SUITE E

City : TAMPA State: FL Zip: 33634

Caller : LLOYD NORRIS Phone: 813-852-1888

BestTime: 8AM - 5PM

Email : LNORRIS@OMNI-COMMUNICATIONS.COM

Submitted: 08/14/19 17:28ET Oper: LLO Chan: WEB

Mbrs : ATTF01 CFLGAS CSC574 CVCFTV FG1442 L3C900 LS1104 OC1586 OUC582 SB2186

Mbrs : SBF02 UTI297

Service Area Code	Service Area Name	Contact	Phone Numbers	Utility Type
ATTF01	AT T	NANCY SPENCE	Day: (770) 918 - 5424	FIBER, COMMUNICATION LINES
CFLGAS	FLORIDA PUBLIC UTILITIES	GARY HARDY	Day: (863) 224 - 3786	GAS
CSC574	C/O ST CLOUD W/WW LINE SYSTEMS DIVISION	RICK MAURO	Day: (407) 957 - 7341 Alt: (407) 709 - 3257	RECLAIMED WATER, WATER,

				SEWER
CVCFTV	CHARTER COMMUNICATIONS	MARVIN USRY JR	Day: (407) 532 - 8509 Alt: (407) 448 - 5506	FIBER, TELEPHONE, CATV
FG1442	FLORIDA GAS TRANSMISSION - DAVENPORT	JOSEPH E. SANCHEZ	Day: (407) 838 - 7171 Emerg: (407) 397 - 9230	GAS
L3C900	CENTURYLINK	NETWORK RELATIONS	Day: (877) 366 - 8344 x2	FIBER
OC1586	OSCEOLA COUNTY TRAFFIC	JACK LOTT	Day: (407) 742 - 7534	FIBER, TRAFFIC LIGHTS
OUC582	ORLANDO UTILITIES COMMISSION - ELECTRIC	RONALD HAWKINS	Day: (407) 434 - 2569 Alt: (582) 613 - 1579	ELECTRIC
SBF02	A T & T/ DISTRIBUTION	DINO FARRUGGIO	Day: (561) 997 - 0240	TELEPHONE
UTI297	CENTURYLINK WINTER GARDEN	TY LESLIE	Day: (407) 814 - 5293	FIBER, TELEPHONE

DRAFT

Appendix 2

Utility Information Request

From: [Lloyd Norris](#)
To: ["seriksson@pea-inc.net"; "ar2916@att.com"; "marvin.usrvjr@charter.com"; "michel.t.leslie@centurylink.com"; "vmiller@stcloud.org"; "cesar_Rivera@cable.comcast.com"; "joseph.e.sanchez@energytransfer.com"; "NationalRelo@centurylink.com"; "aaron.pickle@summit-broadband.com"; "developmentservices@ouc.com"](#)
Cc: ["gtiacobson@att.com"; "Rvpkema_Xan"; "Bill"; "Permit@summit-broadband.com"; "rscheuerle@ouc.com"; "Hammack, Don"; Brent Postma](#)
Subject: 441224-1-22-01 PD&E SR 91 (Florida Turnpike) from Kissimmee Park Road to US 192; Osceola County
Date: Monday, August 19, 2019 4:19:00 PM
Attachments: [SR 91 Kissimmee Park Rd to US 192 Concept Plans & Alternatives.pdf](#)
[441224-1-22-01.kmz](#)

Good afternoon everyone,

I am reaching out this afternoon in regards to the above referenced PD&E study: 441224-1-22-01, located in Osceola County.

This project involves the study for increase capacity along SR 91 (Florida Turnpike) from Kissimmee Park Road to US 192 and 2 alternative interchange involvements.

Please see the attached file for the project alignment plans and kmz file for the project location.

I would greatly appreciate it if you could provide me with green line markups, a cost estimate and any capital improvement information. We are close to finalizing the PD&E Study and the requested information is necessary to do so. Please markup your facilities on the plan sheets and include information about the type, size, material, depth, height, voltage, etc., of your facilities. I am also interested in any easements/subordinations or joint-use agreements you may have within the right of way.

This is a preliminary study, meaning there are no design plans to send to you at this time. The plans I have provided with this email provides you the main study area and 2 alternative interchange involvements for this project. The more information you can provide now may greatly benefit you and your company once it is time for construction.

Please let me know if you have any concerns about significant impacts to your facilities within the project limit.

I thank you in advance for your involvement with this project and I would appreciate your help in providing your responses by September 12, 2019.

If you need additional information or have any questions, please do not hesitate to give me a call.

Thank you,
Lloyd

Lloyd Norris
OMNI Communications, LLC (Certified DBE, MBE, WBE)
8509 Benjamin Road, Suite E

Tampa, FL 33634

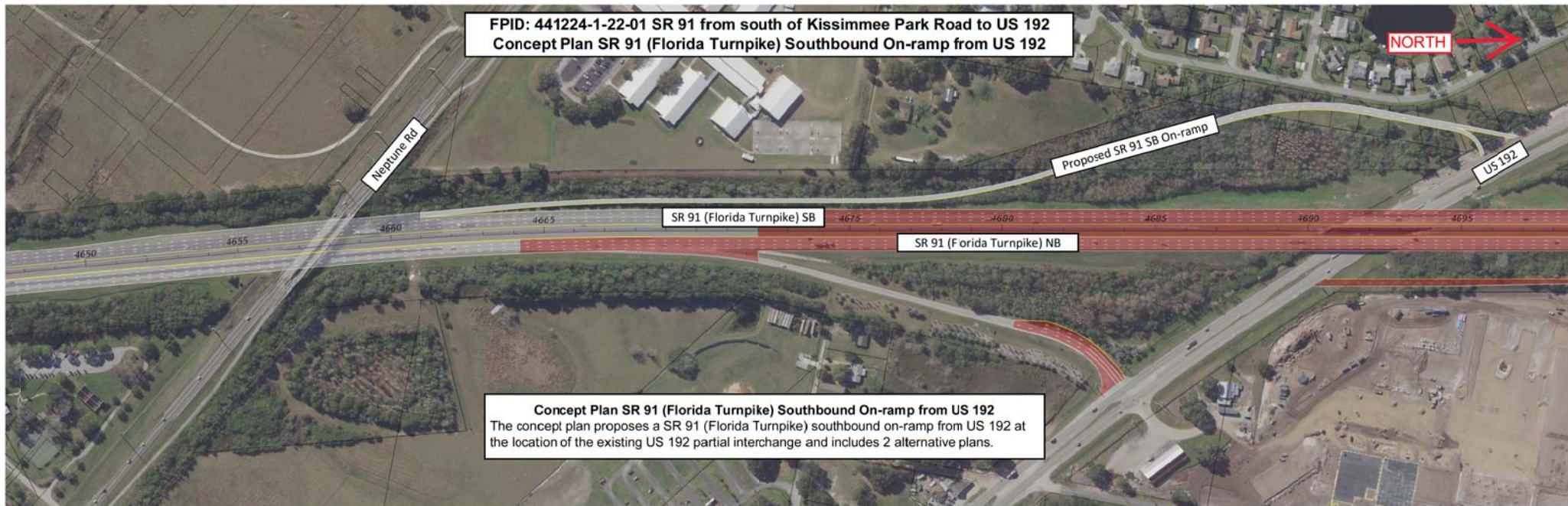
Direct: (813) 682-0974 Office: (813) 852-1888 Fax: (866) 485-3356

lnorris@omni-communications.com

The logo for OMNI features the word "OMNI" in a bold, blue, serif font. A stylized, light blue circular graphic element is positioned behind the letters, partially overlapping them.

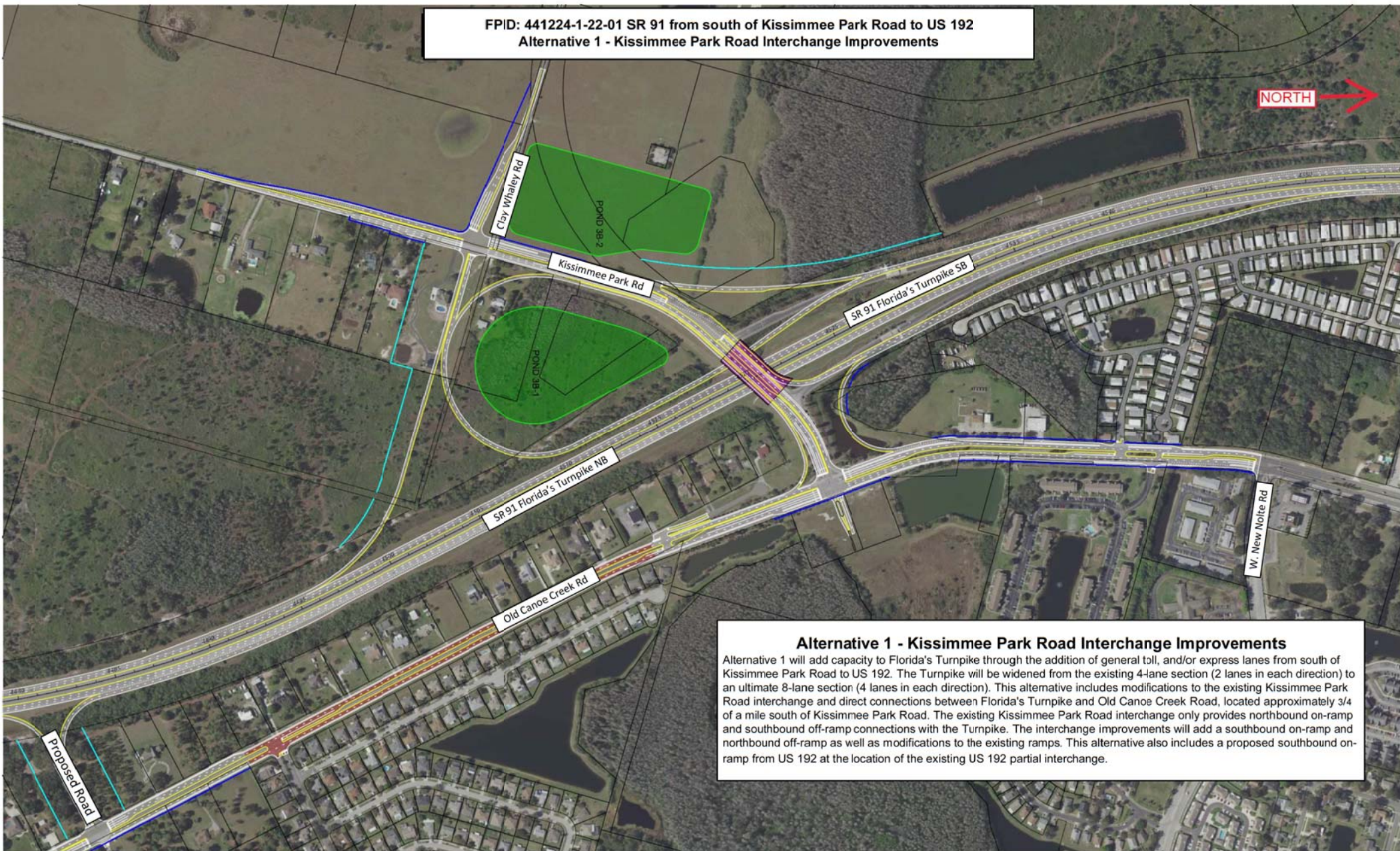
*Surveying & Mapping • Subsurface Utility Engineering
Utility Coordination • Public Involvement*

DRAFT



FPID: 441224-1-22-01 SR 91 from south of Kissimmee Park Road to US 192
Alternative 1 - Kissimmee Park Road Interchange Improvements

NORTH



Alternative 1 - Kissimmee Park Road Interchange Improvements

Alternative 1 will add capacity to Florida's Turnpike through the addition of general toll, and/or express lanes from south of Kissimmee Park Road to US 192. The Turnpike will be widened from the existing 4-lane section (2 lanes in each direction) to an ultimate 8-lane section (4 lanes in each direction). This alternative includes modifications to the existing Kissimmee Park Road interchange and direct connections between Florida's Turnpike and Old Canoe Creek Road, located approximately 3/4 of a mile south of Kissimmee Park Road. The existing Kissimmee Park Road interchange only provides northbound on-ramp and southbound off-ramp connections with the Turnpike. The interchange improvements will add a southbound on-ramp and northbound off-ramp as well as modifications to the existing ramps. This alternative also includes a proposed southbound on-ramp from US 192 at the location of the existing US 192 partial interchange.

FPID: 441224-1-22-01 SR 91 from south of Kissimmee Park Road to US 192
Alternative 2 - Relocate the Kissimmee Park Road Interchange to the North

NORTH

SR 91 Florida's Turnpike NB

SR 91 Florida's Turnpike SB

Old Canoe Creek Rd

W. New Nolte Rd

New Nolte Rd Extension

POND 4-2C

POND 4-1B

POND 4-2B

POND 4-1A

POND 4-2A

Alternative 2 - Relocate the Kissimmee Park Road Interchange to the North

Alternative 2 will add capacity to Florida's Turnpike through the addition of general toll, and/or express lanes from south of Kissimmee Park Road to US 192. The Turnpike will be widened from the existing 4-lane section (2 lanes in each direction) to an ultimate 8-lane section (4 lanes in each direction). This alternative has a proposed new Turnpike interchange at an extension of W. New Nolte Road, located approximately 1/2 of a mile north of Kissimmee Park Road. This new interchange will provide all directional access to and from the Turnpike. The existing ramps at the Kissimmee Park Road interchange will be removed, however the overpass will remain for local access. The proposed interchange features a diverging diamond configuration, which offers improved capacity with a smaller footprint. Direct connections between Florida's Turnpike and Old Canoe Creek Road will be located approximately 3/4 of a mile south of Kissimmee Park Road. The alternative also includes a proposed southbound on-ramp from US 192 at the location of the existing US 192 partial interchange.

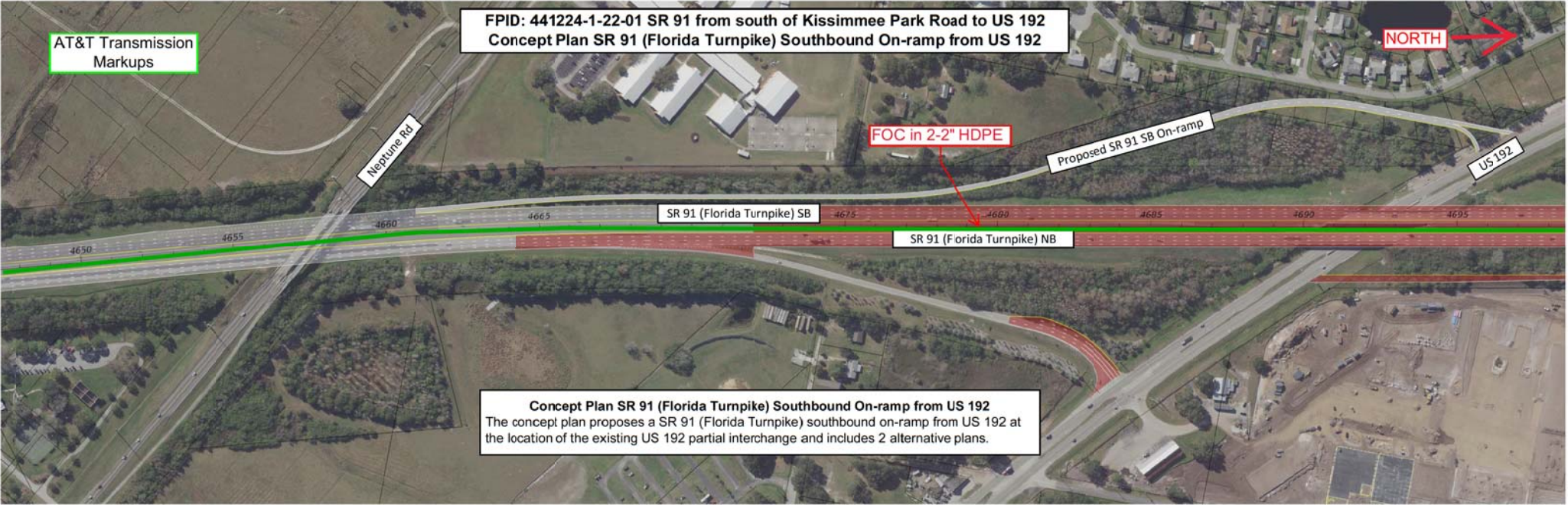
DRAFT

Appendix 3

Utility Responses/Information

AT&T Corporation Transmission Greenline Markups

DRY



FPID: 441224-1-22-01 SR 91 from south of Kissimmee Park Road to US 192
Alternative 1 - Kissimmee Park Road Interchange Improvements

NORTH

FOC in 2-2" HDPE

Alternative 1 - Kissimmee Park Road Interchange Improvements

Alternative 1 will add capacity to Florida's Turnpike through the addition of general toll, and/or express lanes from south of Kissimmee Park Road to US 192. The Turnpike will be widened from the existing 4-lane section (2 lanes in each direction) to an ultimate 8-lane section (4 lanes in each direction). This alternative includes modifications to the existing Kissimmee Park Road interchange and direct connections between Florida's Turnpike and Old Canoe Creek Road, located approximately 3/4 of a mile south of Kissimmee Park Road. The existing Kissimmee Park Road interchange only provides northbound on-ramp and southbound off-ramp connections with the Turnpike. The interchange improvements will add a southbound on-ramp and northbound off-ramp as well as modifications to the existing ramps. This alternative also includes a proposed southbound on-ramp from US 192 at the location of the existing US 192 partial interchange.

FPID: 441224-1-22-01 SR 91 from south of Kissimmee Park Road to US 192
Alternative 2 - Relocate the Kissimmee Park Road Interchange to the North

NORTH

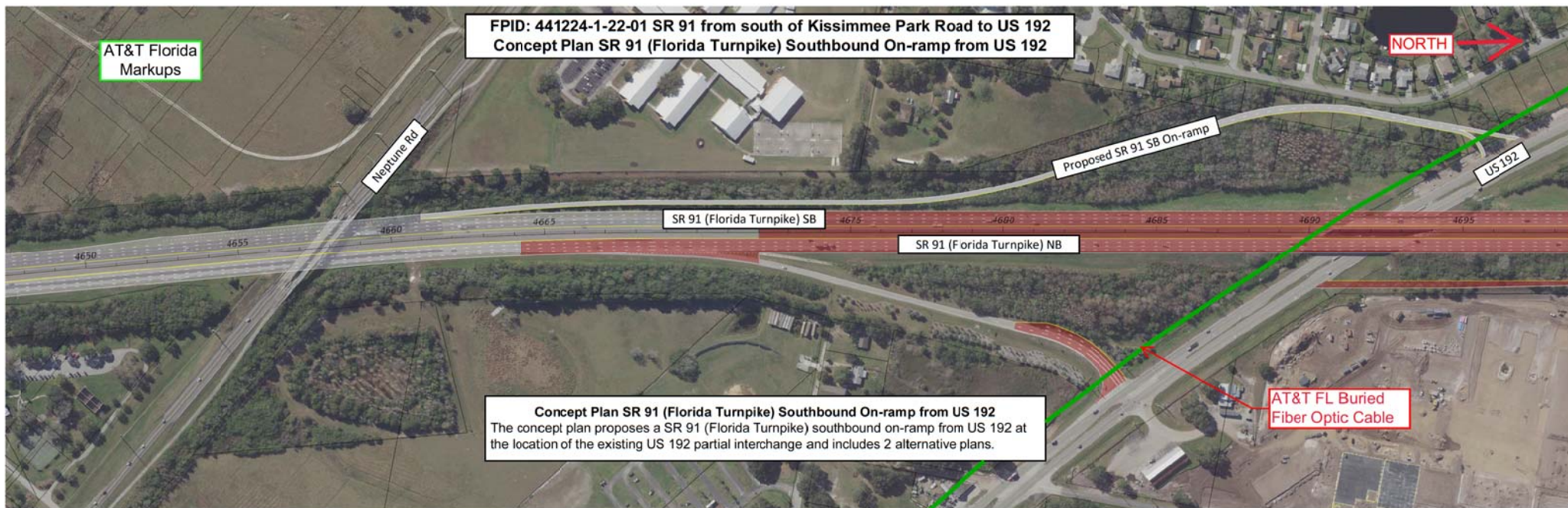
FOC in 2-2" HDPE

Alternative 2 - Relocate the Kissimmee Park Road Interchange to the North

Alternative 2 will add capacity to Florida's Turnpike through the addition of general toll, and/or express lanes from south of Kissimmee Park Road to US 192. The Turnpike will be widened from the existing 4-lane section (2 lanes in each direction) to an ultimate 8-lane section (4 lanes in each direction). This alternative has a proposed new Turnpike interchange at an extension of W. New Nolte Road, located approximately 1/2 of a mile north of Kissimmee Park Road. This new interchange will provide all directional access to and from the Turnpike. The existing ramps at the Kissimmee Park Road interchange will be removed, however the overpass will remain for local access. The proposed interchange features a diverging diamond configuration, which offers improved capacity with a smaller footprint. Direct connections between Florida's Turnpike and Old Canoe Creek Road will be located approximately 3/4 of a mile south of Kissimmee Park Road. The alternative also includes a proposed southbound on-ramp from US 192 at the location of the existing US 192 partial interchange.

AT&T Florida Greenline Markups

DRY



FPID: 441224-1-22-01 SR 91 from south of Kissimmee Park Road to US 192
Alternative 1 - Kissimmee Park Road Interchange Improvements

No AT&T Florida facilities on this page

NORTH

Clay Whaley Rd

POND 3B-2

Kissimmee Park Rd

SR 91 Florida's Turnpike SB

POND 3B-1

SR 91 Florida's Turnpike NB

Old Canoe Creek Rd

W. New Nolte Rd

Proposed Road

Alternative 1 - Kissimmee Park Road Interchange Improvements

Alternative 1 will add capacity to Florida's Turnpike through the addition of general toll, and/or express lanes from south of Kissimmee Park Road to US 192. The Turnpike will be widened from the existing 4-lane section (2 lanes in each direction) to an ultimate 8-lane section (4 lanes in each direction). This alternative includes modifications to the existing Kissimmee Park Road interchange and direct connections between Florida's Turnpike and Old Canoe Creek Road, located approximately 3/4 of a mile south of Kissimmee Park Road. The existing Kissimmee Park Road interchange only provides northbound on-ramp and southbound off-ramp connections with the Turnpike. The interchange improvements will add a southbound on-ramp and northbound off-ramp as well as modifications to the existing ramps. This alternative also includes a proposed southbound on-ramp from US 192 at the location of the existing US 192 partial interchange.

FPID: 441224-1-22-01 SR 91 from south of Kissimmee Park Road to US 192
Alternative 2 - Relocate the Kissimmee Park Road Interchange to the North

NORTH

No AT&T Florida facilities on this page

SR 91 Florida's Turnpike NB

SR 91 Florida's Turnpike SB

Old Canoe Creek Rd

POND 4-1B
POND 4-2B
POND 4-1A
POND 4-2A
New Nolte Rd Extension

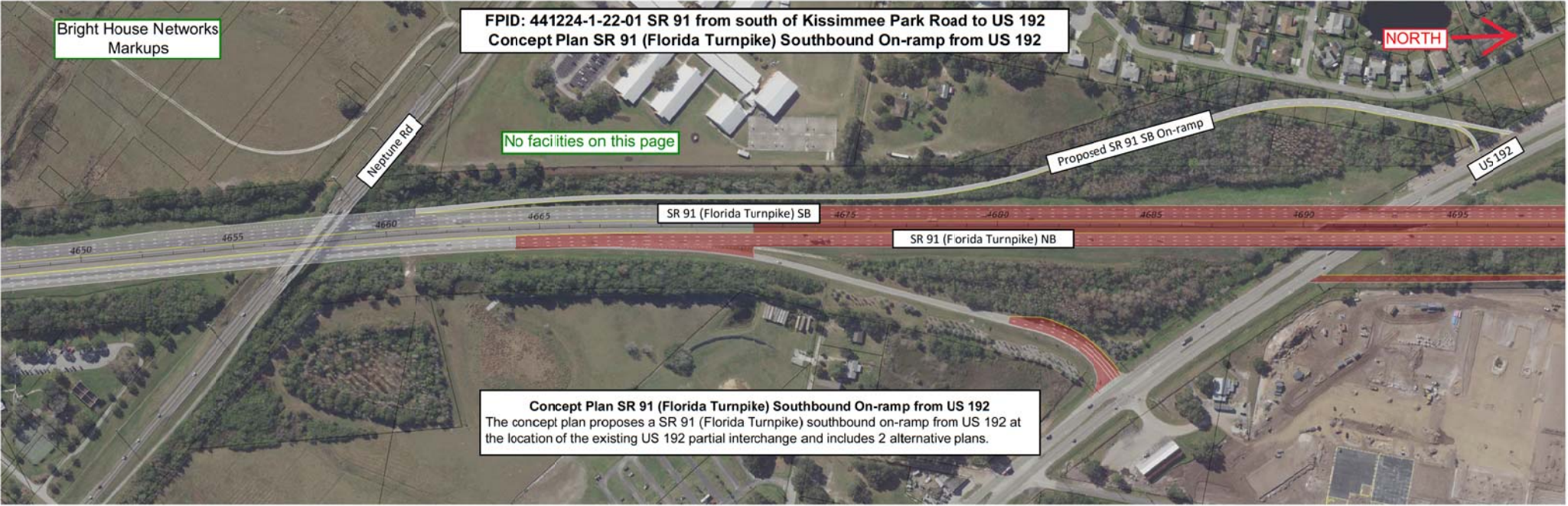
W. New Nolte Rd

Alternative 2 - Relocate the Kissimmee Park Road Interchange to the North

Alternative 2 will add capacity to Florida's Turnpike through the addition of general toll, and/or express lanes from south of Kissimmee Park Road to US 192. The Turnpike will be widened from the existing 4-lane section (2 lanes in each direction) to an ultimate 8-lane section (4 lanes in each direction). This alternative has a proposed new Turnpike interchange at an extension of W. New Nolte Road, located approximately 1/2 of a mile north of Kissimmee Park Road. This new interchange will provide all directional access to and from the Turnpike. The existing ramps at the Kissimmee Park Road interchange will be removed, however the overpass will remain for local access. The proposed interchange features a diverging diamond configuration, which offers improved capacity with a smaller footprint. Direct connections between Florida's Turnpike and Old Canoe Creek Road will be located approximately 3/4 of a mile south of Kissimmee Park Road. The alternative also includes a proposed southbound on-ramp from US 192 at the location of the existing US 192 partial interchange.

Bright House Networks Greenline Markups

DRY



FPID: 441224-1-22-01 SR 91 from south of Kissimmee Park Road to US 192
Alternative 1 - Kissimmee Park Road Interchange Improvements

Existing Bright House UG Fiber/Coax Facilities

Existing Bright House OH Fiber/Coax Facilities

NORTH

Buried Fiber/Coax

OH Fiber/Coax

OH Fiber/Coax

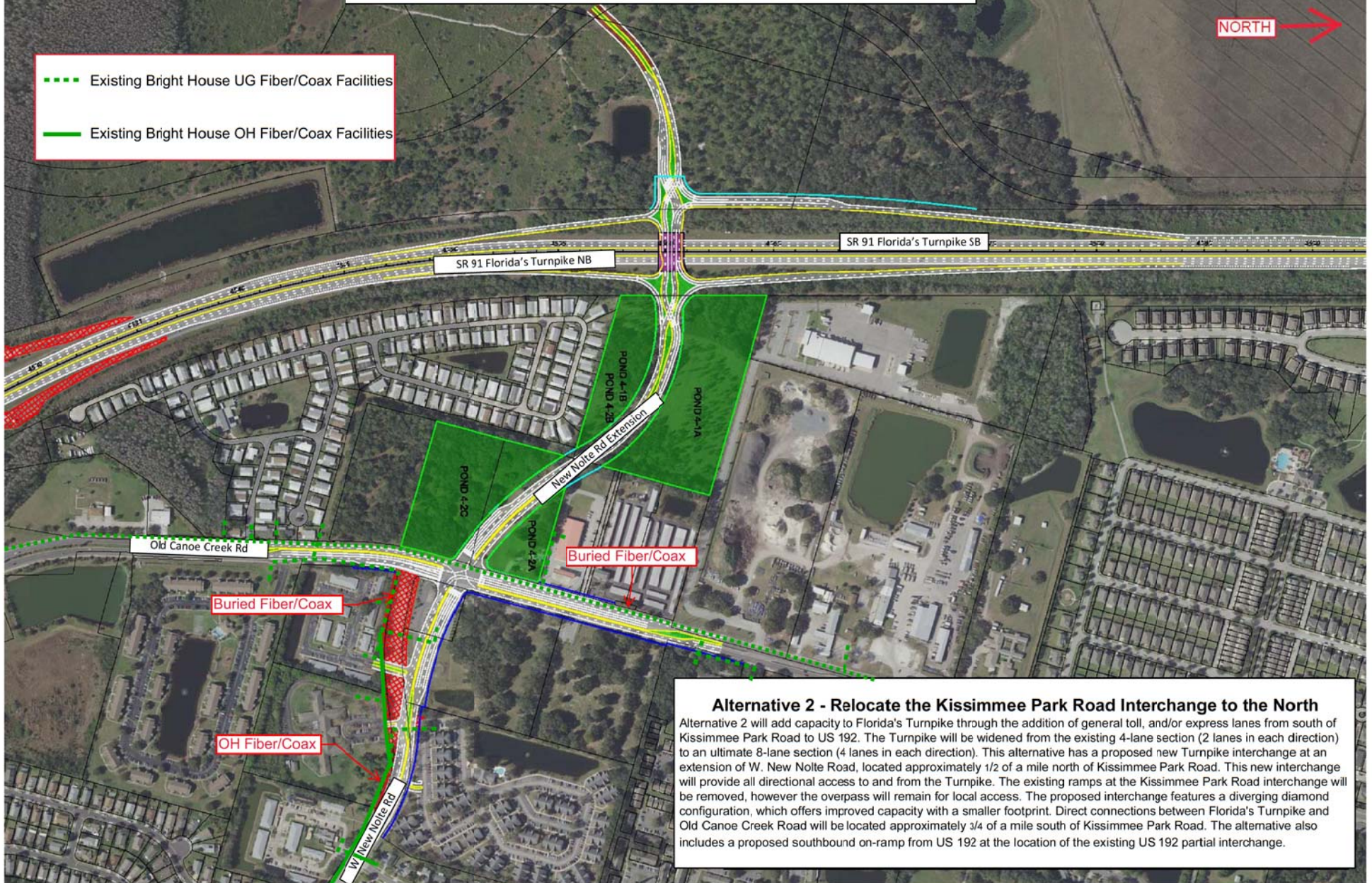
Alternative 1 - Kissimmee Park Road Interchange Improvements

Alternative 1 will add capacity to Florida's Turnpike through the addition of general toll, and/or express lanes from south of Kissimmee Park Road to US 192. The Turnpike will be widened from the existing 4-lane section (2 lanes in each direction) to an ultimate 8-lane section (4 lanes in each direction). This alternative includes modifications to the existing Kissimmee Park Road interchange and direct connections between Florida's Turnpike and Old Canoe Creek Road, located approximately 3/4 of a mile south of Kissimmee Park Road. The existing Kissimmee Park Road interchange only provides northbound on-ramp and southbound off-ramp connections with the Turnpike. The interchange improvements will add a southbound on-ramp and northbound off-ramp as well as modifications to the existing ramps. This alternative also includes a proposed southbound on-ramp from US 192 at the location of the existing US 192 partial interchange.

FPID: 441224-1-22-01 SR 91 from south of Kissimmee Park Road to US 192
Alternative 2 - Relocate the Kissimmee Park Road Interchange to the North

NORTH

- Existing Bright House UG Fiber/Coax Facilities
- Existing Bright House OH Fiber/Coax Facilities

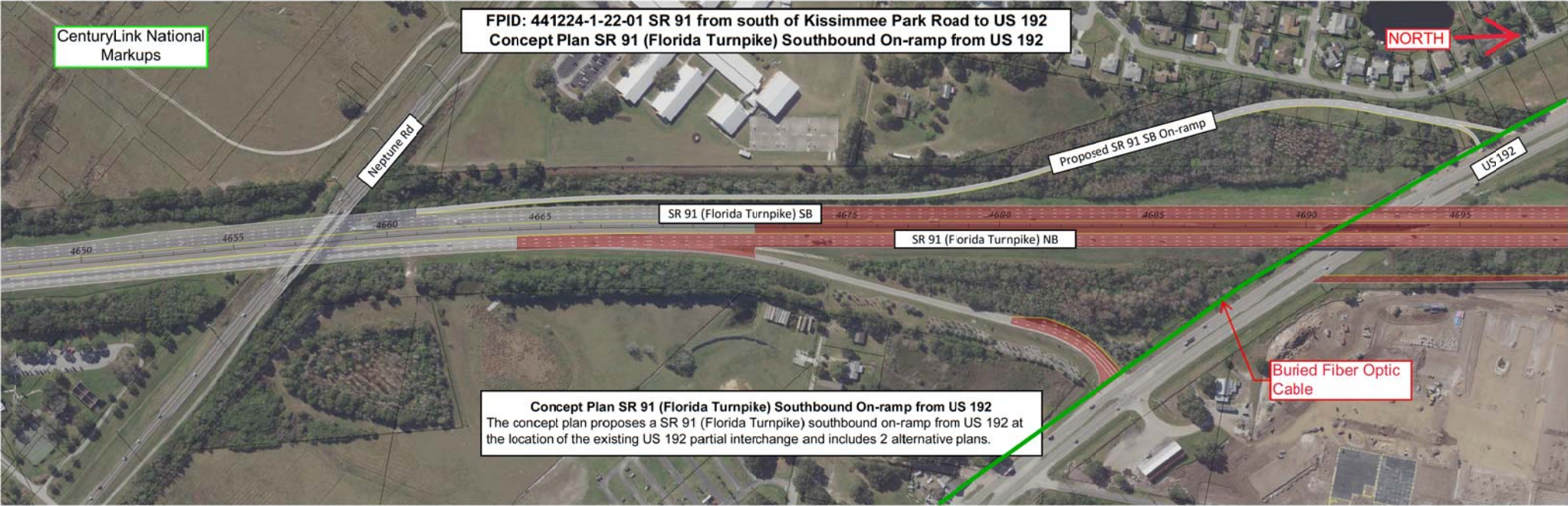


Alternative 2 - Relocate the Kissimmee Park Road Interchange to the North

Alternative 2 will add capacity to Florida's Turnpike through the addition of general toll, and/or express lanes from south of Kissimmee Park Road to US 192. The Turnpike will be widened from the existing 4-lane section (2 lanes in each direction) to an ultimate 8-lane section (4 lanes in each direction). This alternative has a proposed new Turnpike interchange at an extension of W. New Nolte Road, located approximately 1/2 of a mile north of Kissimmee Park Road. This new interchange will provide all directional access to and from the Turnpike. The existing ramps at the Kissimmee Park Road interchange will be removed, however the overpass will remain for local access. The proposed interchange features a diverging diamond configuration, which offers improved capacity with a smaller footprint. Direct connections between Florida's Turnpike and Old Canoe Creek Road will be located approximately 3/4 of a mile south of Kissimmee Park Road. The alternative also includes a proposed southbound on-ramp from US 192 at the location of the existing US 192 partial interchange.

CenturyLink National Greenline Markups

DRY



FPID: 441224-1-22-01 SR 91 from south of Kissimmee Park Road to US 192
Alternative 1 - Kissimmee Park Road Interchange Improvements

NORTH

Clay Whaley Rd

POND 3B-2

Kissimmee Park Rd

SR 91 Florida's Turnpike SB

SR 91 Florida's Turnpike NB

Old Canoe Creek Rd

Buried Fiber Optic Cable

W. New Nolte Rd

Proposed Road

Alternative 1 - Kissimmee Park Road Interchange Improvements

Alternative 1 will add capacity to Florida's Turnpike through the addition of general toll, and/or express lanes from south of Kissimmee Park Road to US 192. The Turnpike will be widened from the existing 4-lane section (2 lanes in each direction) to an ultimate 8-lane section (4 lanes in each direction). This alternative includes modifications to the existing Kissimmee Park Road interchange and direct connections between Florida's Turnpike and Old Canoe Creek Road, located approximately 3/4 of a mile south of Kissimmee Park Road. The existing Kissimmee Park Road interchange only provides northbound on-ramp and southbound off-ramp connections with the Turnpike. The interchange improvements will add a southbound on-ramp and northbound off-ramp as well as modifications to the existing ramps. This alternative also includes a proposed southbound on-ramp from US 192 at the location of the existing US 192 partial interchange.

FPID: 441224-1-22-01 SR 91 from south of Kissimmee Park Road to US 192
Alternative 2 - Relocate the Kissimmee Park Road Interchange to the North

NORTH

Buried Fiber Optic
Cable

Old Canoe Creek Rd

SR 91 Florida's Turnpike NB

SR 91 Florida's Turnpike SB

POND 4-1B
POND 4-2B
POND 4-1A
POND 4-2C
POND 4-2A

New Nolte Rd Extension

W. New Nolte Rd

Alternative 2 - Relocate the Kissimmee Park Road Interchange to the North

Alternative 2 will add capacity to Florida's Turnpike through the addition of general toll, and/or express lanes from south of Kissimmee Park Road to US 192. The Turnpike will be widened from the existing 4-lane section (2 lanes in each direction) to an ultimate 8-lane section (4 lanes in each direction). This alternative has a proposed new Turnpike interchange at an extension of W. New Nolte Road, located approximately 1/2 of a mile north of Kissimmee Park Road. This new interchange will provide all directional access to and from the Turnpike. The existing ramps at the Kissimmee Park Road interchange will be removed, however the overpass will remain for local access. The proposed interchange features a diverging diamond configuration, which offers improved capacity with a smaller footprint. Direct connections between Florida's Turnpike and Old Canoe Creek Road will be located approximately 3/4 of a mile south of Kissimmee Park Road. The alternative also includes a proposed southbound on-ramp from US 192 at the location of the existing US 192 partial interchange.

CenturyLink Florida Greenline Markups

DRY

CenturyLink Legacy Florida
Markups

FPID: 441224-1-22-01 SR 91 from south of Kissimmee Park Road to US 192
Concept Plan SR 91 (Florida Turnpike) Southbound On-ramp from US 192

NORTH →

Neptune Rd

Proposed SR 91 SB On-ramp

US 192

SR 91 (Florida Turnpike) SB

SR 91 (Florida Turnpike) NB

Concept Plan SR 91 (Florida Turnpike) Southbound On-ramp from US 192
The concept plan proposes a SR 91 (Florida Turnpike) southbound on-ramp from US 192 at the location of the existing US 192 partial interchange and includes 2 alternative plans.

Not in service:(1)
24 BFO(1) 48 BFO

FPID: 441224-1-22-01 SR 91 from south of Kissimmee Park Road to US 192
Alternative 1 - Kissimmee Park Road Interchange Improvements

NORTH

Buried Fiber

Buried Copper

Buried Fiber

Buried Copper

Alternative 1 - Kissimmee Park Road Interchange Improvements

Alternative 1 will add capacity to Florida's Turnpike through the addition of general toll, and/or express lanes from south of Kissimmee Park Road to US 192. The Turnpike will be widened from the existing 4-lane section (2 lanes in each direction) to an ultimate 8-lane section (4 lanes in each direction). This alternative includes modifications to the existing Kissimmee Park Road interchange and direct connections between Florida's Turnpike and Old Canoe Creek Road, located approximately 3/4 of a mile south of Kissimmee Park Road. The existing Kissimmee Park Road interchange only provides northbound on-ramp and southbound off-ramp connections with the Turnpike. The interchange improvements will add a southbound on-ramp and northbound off-ramp as well as modifications to the existing ramps. This alternative also includes a proposed southbound on-ramp from US 192 at the location of the existing US 192 partial interchange.

FPID: 441224-1-22-01 SR 91 from south of Kissimmee Park Road to US 192
Alternative 2 - Relocate the Kissimmee Park Road Interchange to the North

NORTH

SR 91 Florida's Turnpike NB

SR 91 Florida's Turnpike SB

POND 4-1B
POND 4-2B

POND 4-1A

POND 4-2C

POND 4-2A

Buried Fiber

Old Canoe Creek Rd

Buried Copper

Buried Copper

W. New Nolte Rd

Alternative 2 - Relocate the Kissimmee Park Road Interchange to the North

Alternative 2 will add capacity to Florida's Turnpike through the addition of general toll, and/or express lanes from south of Kissimmee Park Road to US 192. The Turnpike will be widened from the existing 4-lane section (2 lanes in each direction) to an ultimate 8-lane section (4 lanes in each direction). This alternative has a proposed new Turnpike interchange at an extension of W. New Nolte Road, located approximately 1/2 of a mile north of Kissimmee Park Road. This new interchange will provide all directional access to and from the Turnpike. The existing ramps at the Kissimmee Park Road interchange will be removed, however the overpass will remain for local access. The proposed interchange features a diverging diamond configuration, which offers improved capacity with a smaller footprint. Direct connections between Florida's Turnpike and Old Canoe Creek Road will be located approximately 3/4 of a mile south of Kissimmee Park Road. The alternative also includes a proposed southbound on-ramp from US 192 at the location of the existing US 192 partial interchange.

City of St. Cloud Greenline Markups

DRY

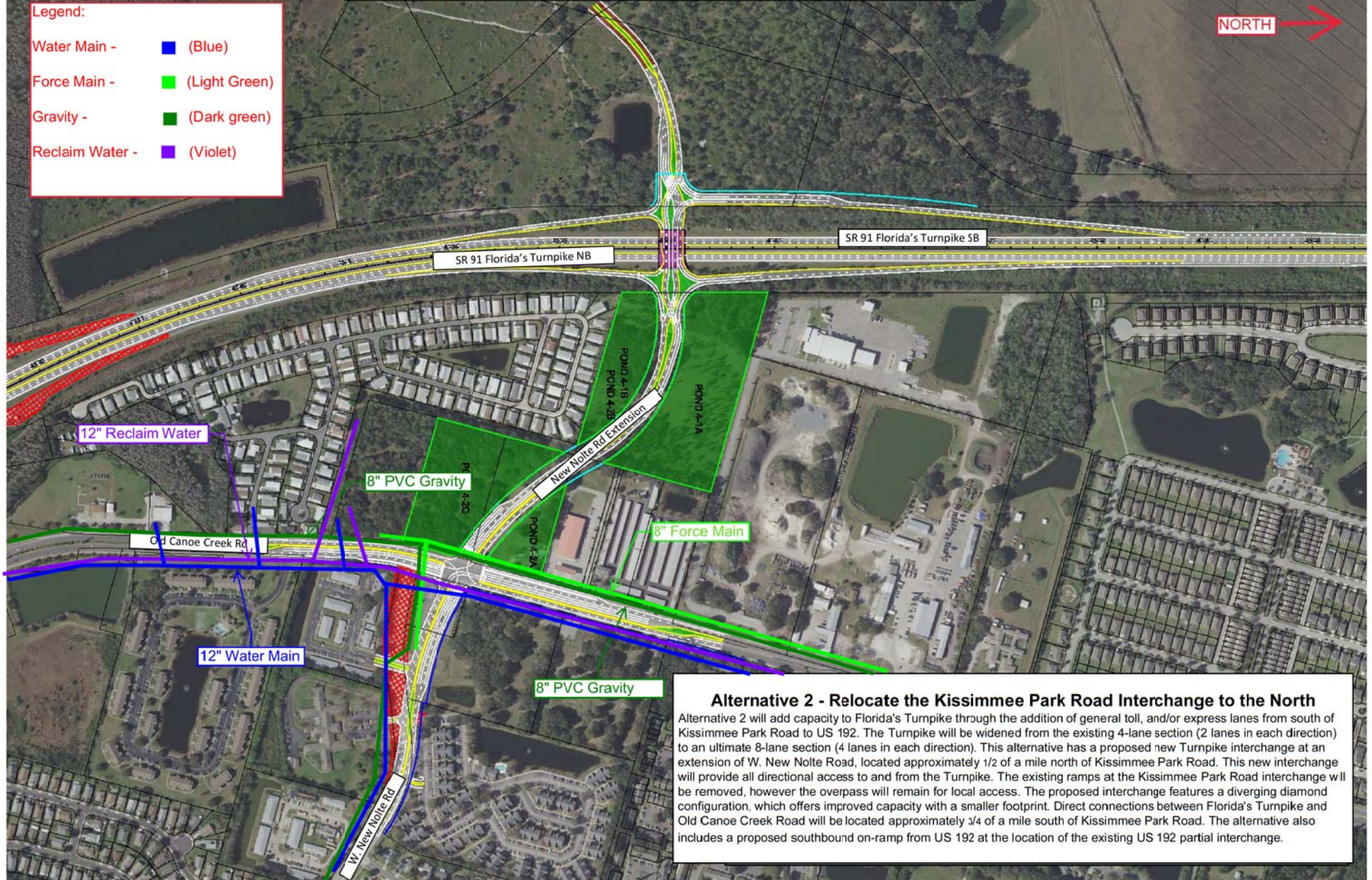


FPID: 441224-1-22-01 SR 91 from south of Kissimmee Park Road to US 192
Alternative 2 - Relocate the Kissimmee Park Road Interchange to the North

Legend:

- Water Main - (Blue)
- Force Main - (Light Green)
- Gravity - (Dark green)
- Reclaim Water - (Violet)

NORTH

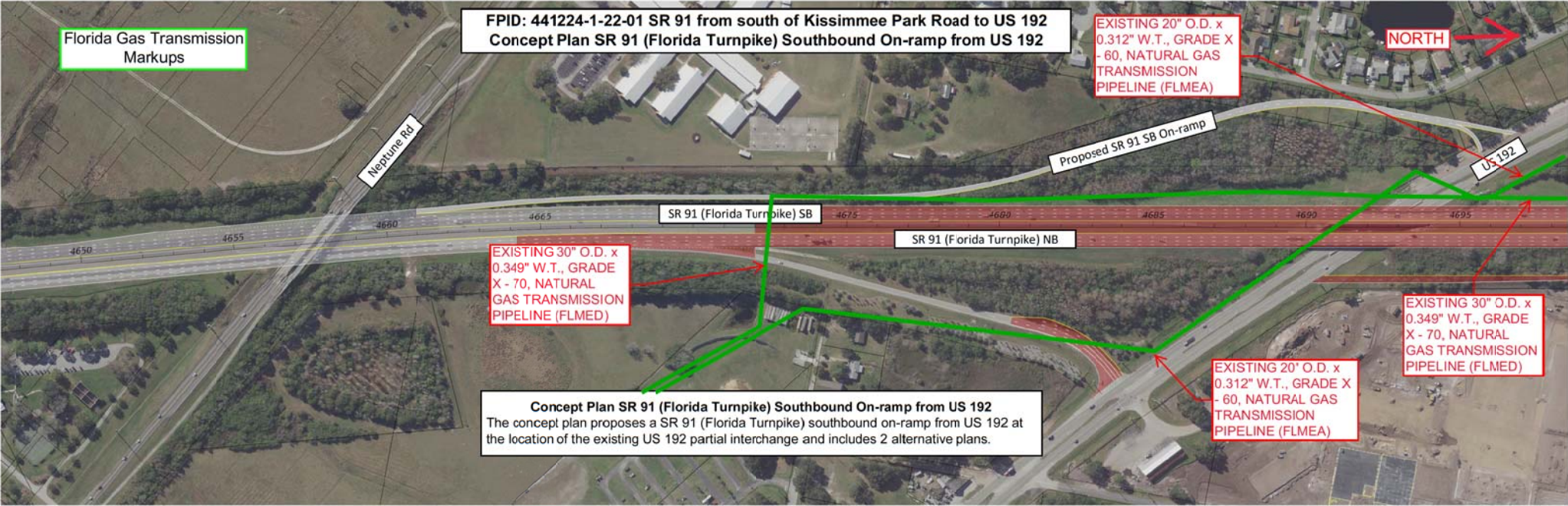


Alternative 2 - Relocate the Kissimmee Park Road Interchange to the North

Alternative 2 will add capacity to Florida's Turnpike through the addition of general toll, and/or express lanes from south of Kissimmee Park Road to US 192. The Turnpike will be widened from the existing 4-lane section (2 lanes in each direction) to an ultimate 8-lane section (4 lanes in each direction). This alternative has a proposed new Turnpike interchange at an extension of W. New Nolte Road, located approximately 1/2 of a mile north of Kissimmee Park Road. This new interchange will provide all directional access to and from the Turnpike. The existing ramps at the Kissimmee Park Road interchange will be removed, however the overpass will remain for local access. The proposed interchange features a diverging diamond configuration, which offers improved capacity with a smaller footprint. Direct connections between Florida's Turnpike and Old Canoe Creek Road will be located approximately 3/4 of a mile south of Kissimmee Park Road. The alternative also includes a proposed southbound on-ramp from US 192 at the location of the existing US 192 partial interchange.

Florida Gas Transmission Greenline Markups

DRY



FPID: 441224-1-22-01 SR 91 from south of Kissimmee Park Road to US 192
Alternative 1 - Kissimmee Park Road Interchange Improvements

Florida Gas Transmission has no facilities on this page

NORTH

Alternative 1 - Kissimmee Park Road Interchange Improvements

Alternative 1 will add capacity to Florida's Turnpike through the addition of general toll, and/or express lanes from south of Kissimmee Park Road to US 192. The Turnpike will be widened from the existing 4-lane section (2 lanes in each direction) to an ultimate 8-lane section (4 lanes in each direction). This alternative includes modifications to the existing Kissimmee Park Road interchange and direct connections between Florida's Turnpike and Old Canoe Creek Road, located approximately 3/4 of a mile south of Kissimmee Park Road. The existing Kissimmee Park Road interchange only provides northbound on-ramp and southbound off-ramp connections with the Turnpike. The interchange improvements will add a southbound on-ramp and northbound off-ramp as well as modifications to the existing ramps. This alternative also includes a proposed southbound on-ramp from US 192 at the location of the existing US 192 partial interchange.

FPID: 441224-1-22-01 SR 91 from south of Kissimmee Park Road to US 192
Alternative 2 - Relocate the Kissimmee Park Road Interchange to the North

Florida Gas Transmission has no facilities on this page

NORTH

SR 91 Florida's Turnpike NB

SR 91 Florida's Turnpike SB

Old Canoe Creek Rd

POND 4-1B
POND 4-2B
POND 4-1A
POND 4-2A
New Nolte Rd Extension

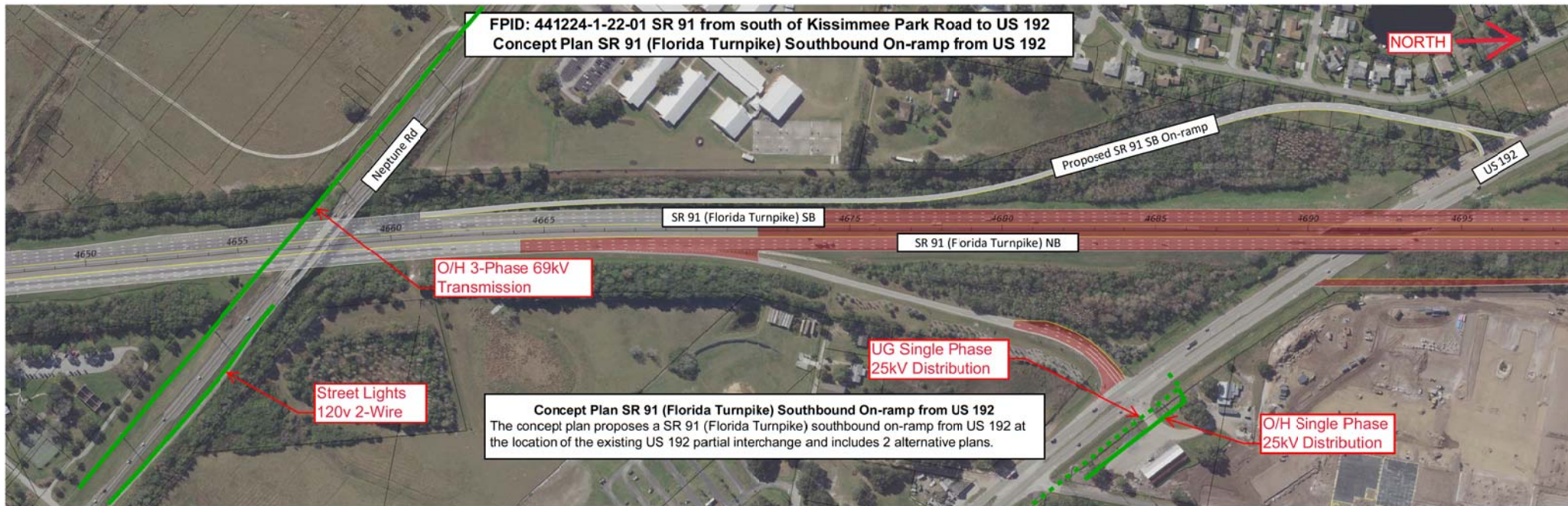
W. New Nolte Rd

Alternative 2 - Relocate the Kissimmee Park Road Interchange to the North

Alternative 2 will add capacity to Florida's Turnpike through the addition of general toll, and/or express lanes from south of Kissimmee Park Road to US 192. The Turnpike will be widened from the existing 4-lane section (2 lanes in each direction) to an ultimate 8-lane section (4 lanes in each direction). This alternative has a proposed new Turnpike interchange at an extension of W. New Nolte Road, located approximately 1/2 of a mile north of Kissimmee Park Road. This new interchange will provide all directional access to and from the Turnpike. The existing ramps at the Kissimmee Park Road interchange will be removed, however the overpass will remain for local access. The proposed interchange features a diverging diamond configuration, which offers improved capacity with a smaller footprint. Direct connections between Florida's Turnpike and Old Canoe Creek Road will be located approximately 3/4 of a mile south of Kissimmee Park Road. The alternative also includes a proposed southbound on-ramp from US 192 at the location of the existing US 192 partial interchange.

Orlando Utilities Commission Greenline Markups

DRY



FPID: 441224-1-22-01 SR 91 from south of Kissimmee Park Road to US 192
Alternative 1 - Kissimmee Park Road Interchange Improvements

NORTH

O/H 3-Phase 25kV
Distribution

Buried 3 Phase 25kV
Distribution

Buried 3 Phase 25kV
Distribution

O/H 3-Phase 25kV
Distribution

O/H 3-Phase 25kV
Distribution

Alternative 1 - Kissimmee Park Road Interchange Improvements

Alternative 1 will add capacity to Florida's Turnpike through the addition of general toll, and/or express lanes from south of Kissimmee Park Road to US 192. The Turnpike will be widened from the existing 4-lane section (2 lanes in each direction) to an ultimate 8-lane section (4 lanes in each direction). This alternative includes modifications to the existing Kissimmee Park Road interchange and direct connections between Florida's Turnpike and Old Canoe Creek Road, located approximately 3/4 of a mile south of Kissimmee Park Road. The existing Kissimmee Park Road interchange only provides northbound on-ramp and southbound off-ramp connections with the Turnpike. The interchange improvements will add a southbound on-ramp and northbound off-ramp as well as modifications to the existing ramps. This alternative also includes a proposed southbound on-ramp from US 192 at the location of the existing US 192 partial interchange.

FPID: 441224-1-22-01 SR 91 from south of Kissimmee Park Road to US 192
Alternative 2 - Relocate the Kissimmee Park Road Interchange to the North

NORTH

O/H 3-Phase 25kV
Distribution

Old Canoe Creek Rd

O/H 3-Phase 25kV
Distribution

W. New Nolte Rd

SR 91 Florida's Turnpike NB

SR 91 Florida's Turnpike SB

New Nolte Rd Extension

POND 4-2C

POND 4-2A

POND 4-2B

O/H 3-Phase 25kV
Distribution

Alternative 2 - Relocate the Kissimmee Park Road Interchange to the North

Alternative 2 will add capacity to Florida's Turnpike through the addition of general toll, and/or express lanes from south of Kissimmee Park Road to US 192. The Turnpike will be widened from the existing 4-lane section (2 lanes in each direction) to an ultimate 8-lane section (4 lanes in each direction). This alternative has a proposed new Turnpike interchange at an extension of W. New Nolte Road, located approximately 1/2 of a mile north of Kissimmee Park Road. This new interchange will provide all directional access to and from the Turnpike. The existing ramps at the Kissimmee Park Road interchange will be removed, however the overpass will remain for local access. The proposed interchange features a diverging diamond configuration, which offers improved capacity with a smaller footprint. Direct connections between Florida's Turnpike and Old Canoe Creek Road will be located approximately 3/4 of a mile south of Kissimmee Park Road. The alternative also includes a proposed southbound on-ramp from US 192 at the location of the existing US 192 partial interchange.