

LEVEL I
CONTAMINATION SCREENING EVALUATION REPORT

ADDENDUM
(PREFERRED POND SITES)

Florida Turnpike Enterprise

SR 570B (Central Polk Parkway) Segment 1
From SR 570 (Polk Parkway) to SR 35 (US 17)

Polk County, Florida

Financial Management Number: 440897-2-32-01

July 30, 2020

The analysis in this document has been supplemented by the CSER Addendum to Mainline and Pond CSERs.

Table of Contents

1.0	Introduction	1
1.1	Purpose of Report	1
1.2	Project Description	1
2.0	Methodology	2
3.0	Contamination Evaluation	3
3.1	Preferred Pond Sites Summary	3
4.0	Summary	7

APPENDICES

CSER Appendix A: Project Location and Pond Alternative Location Maps

CSER Appendix B: Environmental Database Report

1.0 Introduction

1.1 Purpose of Report

The purpose of this Level I Contamination Screening Evaluation Report (CSER) Addendum is to identify contamination sites within or adjacent to the six preferred Stormwater Management Facilities (SMFs) and Flood Plain Compensation (FPCs) areas, and provide risk ratings for each SMF/FPC. Although this document was negotiated and scoped as a Technical Memorandum, Contamination can have a significant negative impact on the project and therefore the early identification of any contamination involvement will provide valuable input during the evaluation process.

Previously for Part A, the Final Level I CSER (Mainline) was provided separately on July 29, 2020; and a Level I CSER for five preliminary pond alternatives was provided on December 19, 2018.

For Part B, a Contamination Tech Memo dated October 2, 2019 was submitted for seven preferred pond alternatives. Previously, this report was **revised** based on FTE comments provided by Mr. Eric Krebill (received on December 5, 2019 and December 9, 2019). Subsequently, the client provided a new pond file on March 4, 2020. This **revision** is based on FTE comments provided on May 28, 2020.

1.2 Project Description

The Central Polk Parkway (CPP/SR 570B) will be a new four-lane divided limited access facility in Polk County, Florida. Through coordination with Florida's Turnpike Enterprise it has been determined that this new corridor will be a Strategic Intermodal System (SIS) highway. This roadway network is a planned new alignment toll facility that will connect the Polk Parkway (SR 570) with SR 60 to the south. The project is located between the City of Lakeland to the north and the City of Bartow to the west and will be completed with three Financial Project Identification Numbers (FPID). Under FPID 440897-2-32-01 Part A and Part B for this project, the Central Polk Parkway Segment 1 project limits for the scope of work will extend from the SR 570 (Polk Parkway) at SR 540 (Winter Lake Road) to US 17 (SR 35). Segment 1 also represents the project limits of this contamination document. See Project Location Map in **Appendix A**. Part A, FPID 440897-2-32-01, will focus on development of an optimized alignment, identify right-of-way needs, and development of Phase 1 plans. Part B, FPID 440897-2-32-01, will focus on final right-of-way maps, permitting, and final construction plans. FPID 440987-4-22-01, will be to perform a Project Development and Environment (PD&E) Study from the termination of Part A at US 17 (SR 35) to SR 60. FPID 440897-3-32-01 will utilize the alignment recommendation from the FPID 440897-4-22-01 PD&E Study and will prepare final right-of-way maps, permitting, and develop final construction plans from US 17 (SR 35) to SR 60.

2.0 Methodology

For this Level I CSER addendum, Tierra:

- Obtained and reviewed an updated EDM report on September 20, 2019 which reflects the updated pond ROW limits for this evaluation,
- Performed a site reconnaissance on September 9, 2019, and
- Documented reviews of historic aerial photographs and topographic maps for the three new ponds, FPC 1, FPC 3, and FPC 4.

Supporting documentation which includes historic aerial photographs and topographic maps are provided in the Level I CSER (ponds) dated December 2018 (CSER Appendix B and CSER Appendix C).

3.0 Contamination Evaluation

3.1 Preferred Pond Sites Summary

A contamination evaluation for total of 6 preferred pond sites was performed for this project. Details for each potential contamination site and preferred pond site investigated are provided in the Preferred Pond Sites Summary table below. It is important to note, FPC 2 is omitted in Table 1 since it was merged with SMF 3. The location of each contamination site is illustrated in **CSER Appendix A**.

Table 1 – Preferred Pond Sites Summary		
Pond ID	Comments	Risk Rating for Preferred Pond Sites
SMF 1	<p>SMF 1 was previously evaluated twice. First, in the Level I CSER dated December 19, 2018 SMF 1 was assigned a risk rating of Low based on a distance of 900 feet to the nearest contamination concern (Hazardous Waste Collection Facility), regulatory status, and cross-gradient groundwater flow direction of the Polk County North Central Landfill. Second, in the Tech Memo dated October 2, 2019, since no new contamination concerns were identified, SMF 1 retained a risk rating of Low.</p> <p>During the September 19, 2019 site reconnaissance, SMF 1 was observed as an existing stormwater pond and woods. No new contamination concerns were identified.</p> <p>EDM's regulatory report identified 1 potential contamination site within the vicinity of SMF 1. None were located onsite. The following provides a discussion of the potential contamination site:</p> <p><u>North Central Landfill/Polk County Solid Waste</u> <u>10 Environmental Loop (and SR 540)</u> <u>Solid Waste ID: 49722, 95745</u> <u>Distance from ROW: Closed Class I landfill is 1,700 feet west</u> <u>Contaminants of Concern: Solid Waste, Hazardous Waste</u> <u>Specific Contaminants of Concern: Benzene and vinyl chloride (see Evaluation Monitoring Report 3rd Quarter 2019 dated October 21, 2019)</u></p> <p>This site was previously evaluated in the Level I CSER for preliminary ponds dated December 19, 2018. Based on a distance of 1,700 feet to the nearest contamination concern, regulatory status, and cross-gradient groundwater flow direction of the Polk County North Central Landfill, this facility was considered a low contamination concern to this pond site. For this addendum, Tierra reviewed the Evaluation Monitoring Report 3rd Quarter 2019 dated October 21, 2019. No new contamination concerns were identified.</p> <p>No new contamination concerns were identified during this contamination evaluation.</p> <p>Since no new contamination concerns were identified during this contamination evaluation, SMF 1 retains a risk rating of Low.</p>	Low
SMF 2	<p>SMF 2 was previously evaluated twice. First, in the level I CSER dated December 19, 2018, SMF 2 was assigned a risk rating of No based on a lack of contamination concerns. Second, in the Tech Memo dated October 2, 2019, since no new contamination concerns were identified, SMF 2 retained a risk rating of No.</p> <p>During the September 19, 2019 site reconnaissance, SMF 2 was observed as pasture.</p> <p>EDM's report identified no regulated facilities within or adjacent to SMF 2. No new regulatory files were identified or reviewed subsequent to the previous evaluation dated December 2018.</p> <p>Since no new contamination concerns were identified during this contamination evaluation, SMF 2 retains a risk rating of No.</p>	No
SMF 3	<p>SMF 3 was previously evaluated twice. First, in the Level I CSER dated December 19, 2018, SMF 3 was assigned a risk rating of Low based on the proximity to the former strip mine located adjacent south and west. Second, in Level I CSER dated October 2, 2019, SMF 3 was assigned a risk rating of Low based on the lack of new contamination concerns.</p> <p>During the September 19, 2019 site reconnaissance, SMF 3 was observed as pasture. No contamination concerns were noted.</p> <p>EDM's report identified no regulated facilities within or adjacent to SMF 3. No new regulatory files were identified or reviewed subsequent to the previous evaluation dated December 2018.</p> <p>Since no new contamination concerns were identified, SMF 3 retains a risk rating of Low.</p>	Low



Table 1 – Preferred Pond Sites Summary		
Pond ID	Comments	Risk Rating for Preferred Pond Sites
FPC 1	<p>FPC 1 was previously evaluated in the Level I CSER dated October 2, 2019 and was assigned a risk rating of Low based on the proximity to two petroleum Aboveground Storage Tanks (ASTs) located approximately 30 feet offsite.</p> <p>During the September 19, 2019 site reconnaissance, FPC 1 was observed as pasture and woods. A mobile pump with an empty 55-gallon drum (see photo below) was observed in the central area onsite. No stains or odors were noted at the pump. Offsite, two 1,000-gallon ASTs (not labeled, presumably diesel) were observed approximately 30 feet southwest of FPC 1 (see photo below). The ASTs were situated in concrete containment. No obvious stained soil or stressed vegetation was observed.</p> <div></div> <p>Mobile pump with 55-gallon drum (empty), central area looking northeast</p> <p>Offsite, 2 ASTs located adjacent south</p> <p>EDM's report identified no regulated facilities within or adjacent to FPC 1.</p> <p>Tierra reviewed historic aerial photographs from 1941 to 2018. Based on Tierra's review, FPC 1 was depicted as pasture, woods and trails from 1941 to 2018. Offsite southwest, 2 ASTs were added in 2009.</p> <p>Tierra reviewed the "Bartow, Fla." topographic map dated 1949 and photorevised in 1987. The map depicts FPC 1 in white shading indicating pasture.</p> <p>Since no new contamination concerns were identified, FPC 1 retains a risk rating of Low.</p>	Low







Table 1 – Preferred Pond Sites Summary		
Pond ID	Comments	Risk Rating for Preferred Pond Sites
FPC 3	<p>FPC 3 was previously evaluated in the Level I CSER dated October 2, 2019 and was assigned a risk rating of Medium based on historic use as phosphate mined land.</p> <p>During the September 19, 2019 site reconnaissance, FPC 3 was observed as pasture. Two piezometers were observed onsite. The piezometers were installed by Tierra for geotechnical purposes (to measure depth to shallow groundwater). Offsite, a manmade pond is located adjacent south.</p> <div></div> <p>Piezometer in north-central area looking southeast</p> <p>South-central area looking south</p> <p>EDM's regulatory report identified 1 potential contamination site within the vicinity of FPC 3. None were located onsite. The following provides a discussion of the potential contamination site:</p> <p><u>Polk County Board of County Commissioners</u> <u>3000 Sheffield Road</u> <u>Solid Waste ID: 95912</u> <u>Distance from ROW: 800 feet northeast</u> <u>Contaminants of Concern: Solid Waste, Petroleum</u></p> <p>During the site reconnaissance, this site was observed as Polk County Fleet Management facility. See location depicted on CSER Appendix A, Sheet A-4. For the Solid Waste database listing, EDM's report states this facility is a registered waste tire collector. Based on the April 25, 2019 FDEP inspection form, this facility has two 10,000-gallon petroleum ASTs. The ASTs are located approximately 1,300 feet northeast of FPC 3. Based on a distance of at least 800 feet to the property boundary, this facility is not considered a contamination concern to FPC 3.</p> <p>Tierra reviewed historic aerial photographs from 1941 to 2018. Based on Tierra's review, FPC 3 was depicted as pasture from 1941 to 1957. Earthwork (phosphate mining) was depicted in 1968 and 1971. A haul road was depicted along the east boundary in 1980. Possible earthwork (reclamation) was depicted in 1993. FPC 3 appears as pasture, similar to its current configuration since 1994.</p> <p>Tierra reviewed historic topographic map "Bartow, Fla." Dated 1949 and photorevised in 1987. The map depicts FPC 3 in white shading indicating pasture with purple shading labeled "Reclaimed Strip Mine."</p> <p>Since no new contamination concerns were identified, FPC 3 retains a risk rating of Medium. Contaminants of concern related to the former phosphate mining may include PAHs, Radium 226, and pH. Based on the distance to the fleet management facility, petroleum impacts are not anticipated. Therefore, contaminants of concern are not provided for the fleet facility.</p>	Medium

Table 1 – Preferred Pond Sites Summary		
Pond ID	Comments	Risk Rating for Preferred Pond Sites
FPC 4	<p>FPC 4 was previously evaluated in the Level I CSER dated October 2, 2019 and was assigned a risk rating of Low based on the proximity to Scrap It III automobile salvage yard.</p> <p>During the September 19, 2019 site reconnaissance, FPC 4 was observed as portions of 4 residential properties: 3423, 3427 (mobile home), 3447 and 3453 US Highway 17. Three single family homes and one mobile home were located onsite at 3423, 3447, 3453, and 3427 US Highway 17, respectively. Several paint and insect spray containers, each less than 2-gallons were observed inside detached sheds located at each of these 3 residences. Shed floors were concrete and wood. One 3-inch diameter metal pipe (presumably a former potable well) was observed approximately 10 feet north of the residence at 3423 US Highway 17. One septic tank/drainfield was noted near the south-central boundary onsite, on the east side of the mobile home (3427 US Highway 17).</p> <div></div> <p>Houses (3447 & 3453 US 17) in east-central area Shed in east-central area House (3423 US 17) in east-central area onsite Shed in east-central area</p>	Low
	<p>Offsite, an abandoned railroad corridor was observed approximately 170 feet north. The rails and lumber were removed. Additionally, a Tampa Electric Company (TECO) substation was observed approximately 220 feet north.</p> <p>EDM's regulatory report identified one potential contamination site within the vicinity of FPC 4. None were located onsite. This site was also identified in the Level I CSER for the mainline. The following provides a discussion of this potential contamination site:</p> <p><u>Scrap It III / Bartow Auto Salvage</u> <u>3450 US 17, Bartow</u> <u>Hazardous Materials ID: FLR000177469</u> <u>Distance from ROW: 220 feet south</u> <u>Contaminants of Concern: Diesel, gasoline, chlorinated solvents, hydraulic fluids (PCBs), RCRA 4 metals (arsenic, cadmium, chromium, and lead)</u></p> <p>During the site reconnaissance, this facility was observed as Scrap It III, an auto salvage yard. According to information found on FDEP's MapDirect database, this facility is a registered Conditionally Exempt Small Quantity Generator (CESQG) of hazardous wastes with no unresolved code violations, enforcements, or other contamination concerns reported. Given the lack of reported contamination concerns and significant distance, this facility is a low contamination concern to FPC 4.</p> <p>Tierra reviewed historic aerial photographs from 1941 to 2018. Based on Tierra's review, FPC 4 is depicted as woods and low, wet areas from 1941 to 1968. The properties were depicted similar to their current configurations with 3 structures (residences) onsite since 1971.</p> <p>Tierra reviewed historic topographic map "Bartow, Fla." Dated 1949 and photorevised in 1987. The map depicts 3 residential structures in purple shading indicating they were added between 1949 and 1987. The western area was depicted as swamp or marsh.</p> <p>Since no new contamination concerns were identified, FPC 4 retains a risk rating of Low.</p>	

4.0 Summary

A total of six preferred pond sites were evaluated during this contamination evaluation. The following table presents a summary of the risk ratings assigned for these pond sites:

Table 2 – Risk Rating Matrix Preferred Pond Sites				
Risk Rating	High	Medium	Low	No
Pond ID	none	FPC 3	SMF 1, SMF 3 FPC 1, and FPC 4	SMF 2

Based on the conclusions of the study and the risk ratings noted above, the following recommendations are made for this project:

Additional information may become available or site-specific conditions may change from the time this report was prepared and should be considered prior to acquiring right-of-way and/or proceeding with roadway construction. Variables that may change the risk rating include a facility's non-compliance to environmental regulations, new discharges to the soil or groundwater, and modifications to current permits. Should any of these variables change, additional assessment of the facilities should be considered.

For the pond alternatives rated "No" for potential contamination, no further action is planned. The site has been evaluated and determined not to have potential contamination risk to the study area at this time.

For those pond alternatives rated "Low" for potential contamination, no further action is required at this time. These sites/facilities have the potential to impact the study area, but based on select variables have been determined to have low risk to the project at this time.

For risk ratings of "Medium," Level II field screening should be conducted. These sites have been determined to have potential contaminants, which may impact the project. A soil and groundwater sampling plan, as applicable, should be developed for each site. The sampling plan should provide sufficient detail as to the number of soil and groundwater samples to be obtained and the specific analytical test to be performed. For FPC 3, laboratory analysis of soil and groundwater samples, may include one or more of the following: Radium 226 by EPA Method 903.1, Polycyclic Aromatic Hydrocarbons (PAHs) by EPA Method 8270, and pH (in situ). A site location sketch for each facility/pond site showing all proposed boring locations and groundwater monitoring wells should be prepared. The District Contamination Impact Coordinator (DCIC) should be consulted regarding the site specific Level II field screening scope of work.

A NESHAP Asbestos survey may be warranted for structures (including buried cementitious pipe, if any) identified on FPC 4.

The septic system(s) located within the limits of FPC 4 should be properly abandoned in accordance with state and local guidelines.

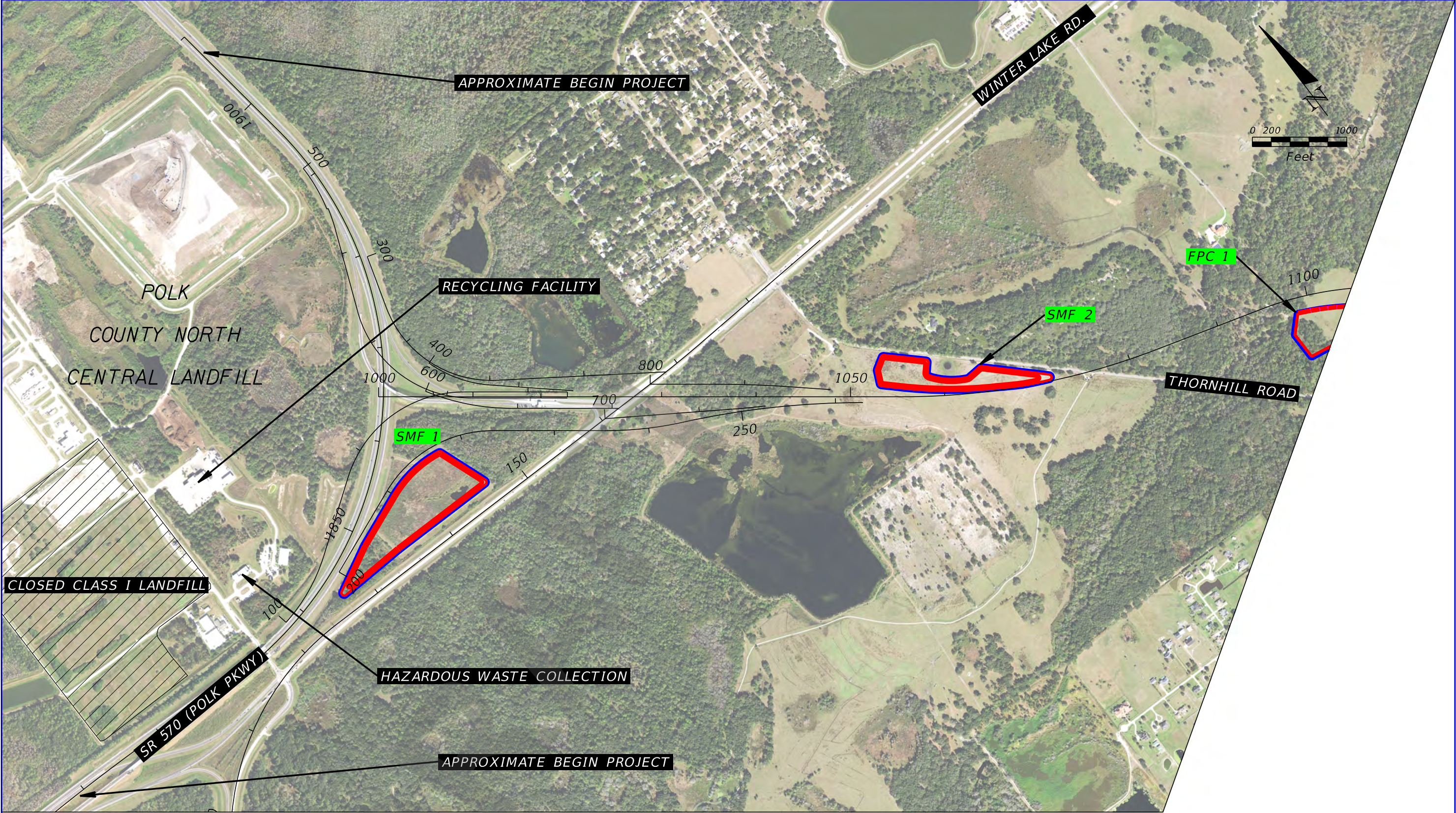
CSER APPENDIX A
Project Location Map and
Pond Alternative Location Maps



SOURCE: FDOT SURVEY AND MAPPING DATED 2017

PROJECT LOCATION MAP

REVISIONS				TIERRA, INC. 7351 TEMPLE TERRACE HIGHWAY TAMPA, FLORIDA 33637 CERTIFICATE OF AUTHORIZATION 6486	STATE OF FLORIDA DEPARTMENT OF TRANSPORTATION			CENTRAL POLK PARKWAY - SEGMENT 1 POLK COUNTY, FLORIDA	SHEET NO. A-1
DATE	DESCRIPTION	DATE	DESCRIPTION		ROAD NO.	COUNTY	FINANCIAL PROJECT ID		
			TIERRA PROJECT NO.: 6511-17-181-001E		N/A	POLK	440897-2-32-01		

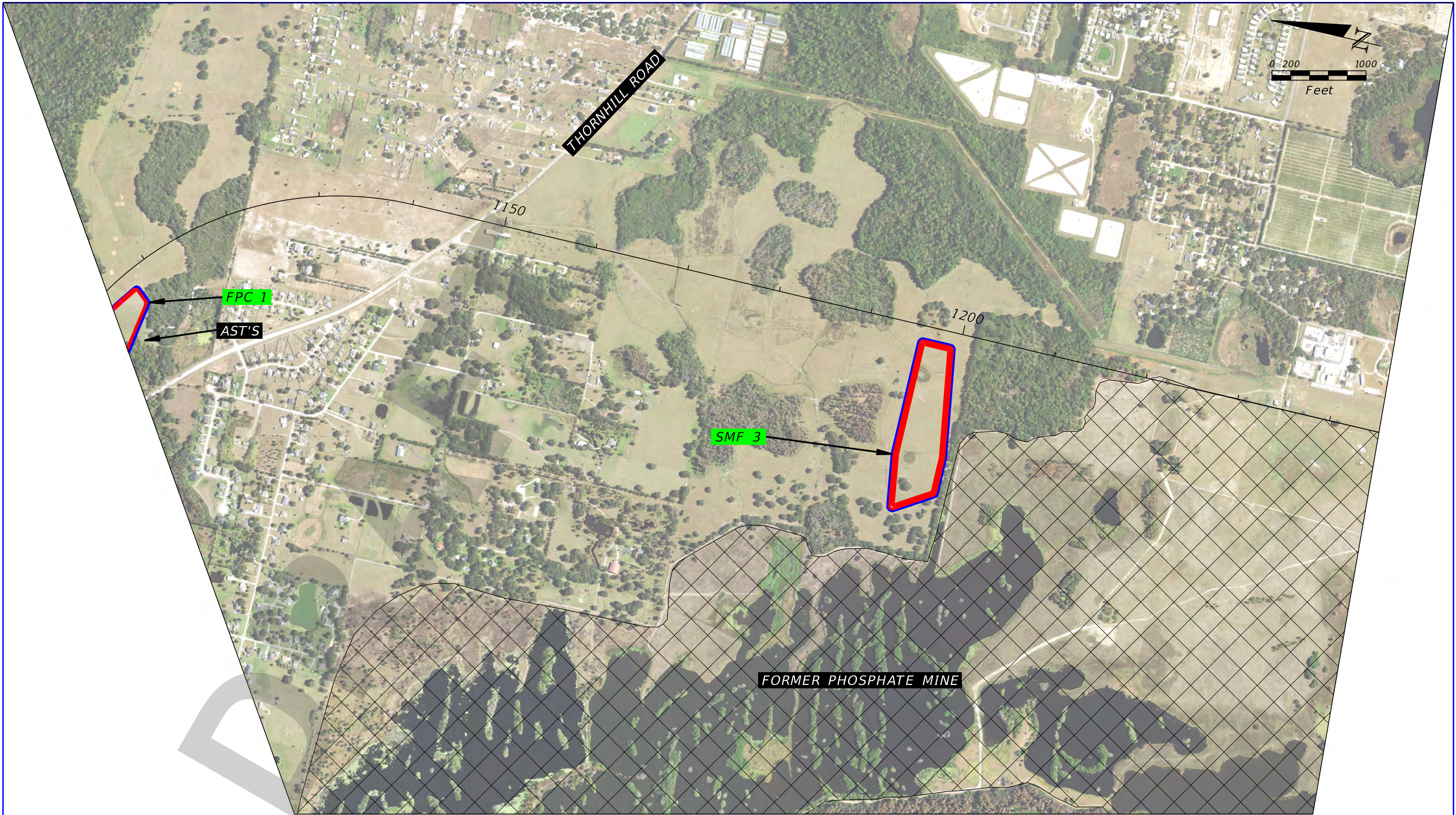


SOURCE: FDOT SURVEY AND MAPPING DATED 2017

POND ALTERNATIVES LOCATION MAP

POND NAME GREEN = NO/LOW RISK SITES
POND NAME RED = MEDIUM RISK SITES

REVISIONS				TIERRA, INC. 7351 TEMPLE TERRACE HIGHWAY TAMPA, FLORIDA 33637 CERTIFICATE OF AUTHORIZATION 6486	STATE OF FLORIDA DEPARTMENT OF TRANSPORTATION			CENTRAL POLK PARKWAY - SEGMENT 1 POLK COUNTY, FLORIDA	SHEET NO. A-2
DATE	DESCRIPTION	DATE	DESCRIPTION		ROAD NO.	COUNTY	FINANCIAL PROJECT ID		
			TIERRA PROJECT NO.: 6511-17-181-001E		N/A	POLK	440897-2-32-01		

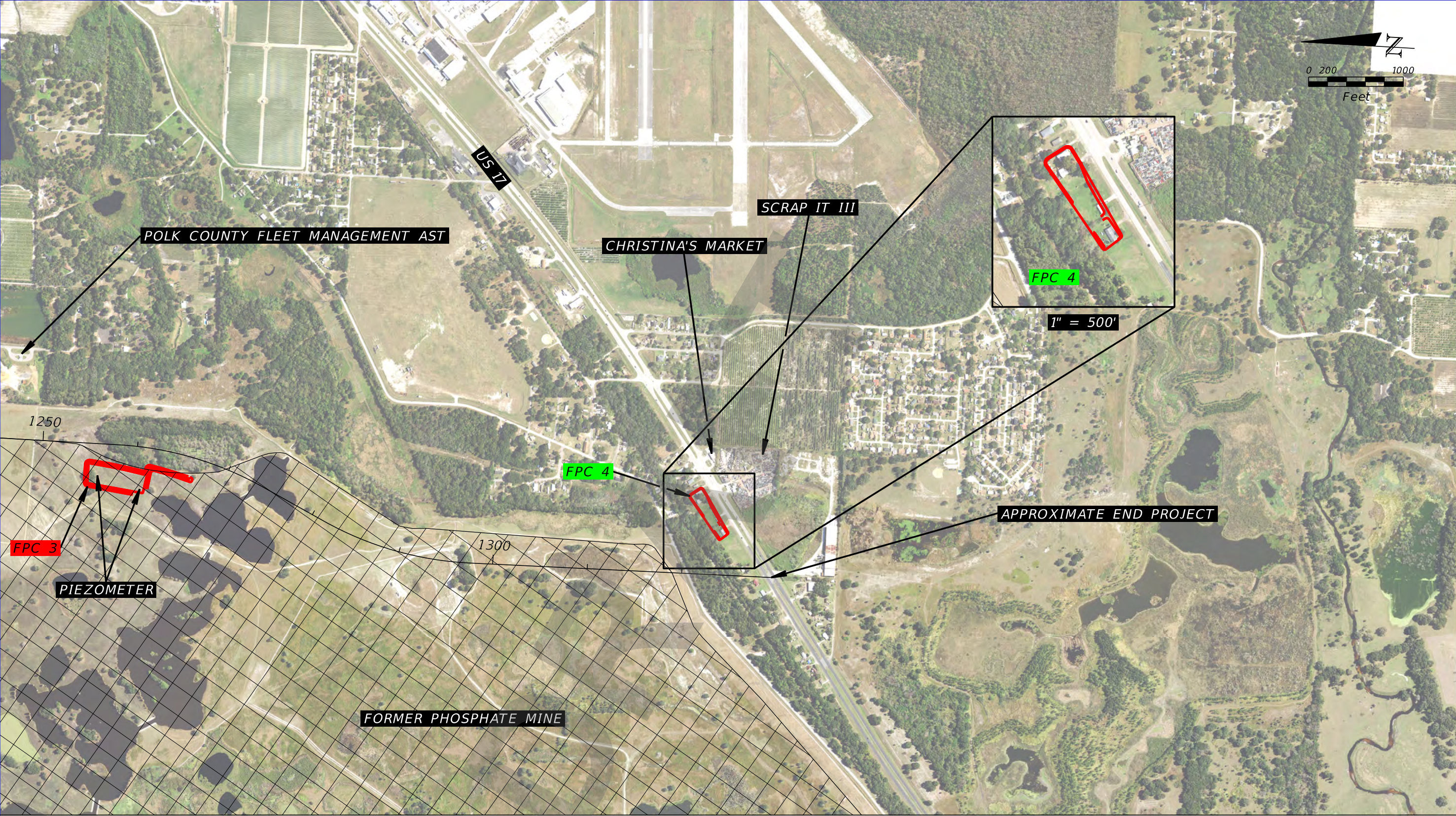


SOURCE: FDOT SURVEY AND MAPPING DATED 2017

POND ALTERNATIVES LOCATION MAP

POND NAME GREEN = NO/LOW RISK SITES
POND NAME RED = MEDIUM RISK SITES

REVISIONS				TIERRA, INC. 7351 TEMPLE TERRACE HIGHWAY TAMPA, FLORIDA 33637 CERTIFICATE OF AUTHORIZATION 6486	STATE OF FLORIDA DEPARTMENT OF TRANSPORTATION			CENTRAL POLK PARKWAY - SEGMENT 1 POLK COUNTY, FLORIDA	SHEET NO.
DATE	DESCRIPTION	DATE	DESCRIPTION		ROAD NO.	COUNTY	FINANCIAL PROJECT ID		
			TIERRA PROJECT NO.: 6511-17-181-001E		N/A	POLK	440897-2-32-01	A-3	



POND ALTERNATIVES LOCATION MAP

SOURCE: FDOT SURVEY AND MAPPING DATED 2017

POND NAME GREEN = NO/LOW RISK SITES
POND NAME RED = MEDIUM RISK SITES

REVISIONS				TIERRA, INC. 7351 TEMPLE TERRACE HIGHWAY TAMPA, FLORIDA 33637 CERTIFICATE OF AUTHORIZATION 6486	STATE OF FLORIDA DEPARTMENT OF TRANSPORTATION			CENTRAL POLK PARKWAY - SEGMENT 1 POLK COUNTY, FLORIDA	SHEET NO. A-4
DATE	DESCRIPTION	DATE	DESCRIPTION		ROAD NO.	COUNTY	FINANCIAL PROJECT ID		
			TIERRA PROJECT NO.: 6511-17-181-001E		N/A	POLK	440897-2-32-01		

CSER APPENDIX B
Environmental Database Report

Environmental Data Report

Custom Radius Research

CCP-1 PART B

Polk County, Florida

Prepared For:

Tierra Inc
7351 Temple Terrace Hwy
Tampa, FL 33637

Prepared By:



Environmental Data Management, Inc.
2840 West Bay Drive, Suite 208
Largo, Florida 33770

September 20, 2019



September 20, 2019

Chris Garth
Tierra Inc
7351 Temple Terrace Hwy
Tampa, FL 33637

Subject: **Custom Radius Research - EDM Project #24922**

Dear Mr. Garth

Thank you for choosing Environmental Data Management, Inc. The following report provides the results of our environmental data research that you requested for the following location:

CCP-1 PART B

Polk County, Florida

The following is a summary of the components contained within this report:

- **Executive Summary** –lists the databases that were searched for this report, the search distance criteria and the number of sites identified for each database.
- **Map of Study Area**– street map showing the location of the Subject Property and any regulatory listed sites identified within the search criteria.
- **Site Summary Table** –displays the Map ID number, Permit or Registration number, Name/Address and the Government Database(s) for the identified regulatory listed sites.
- **Detail Reports** – data detail for each database record identified.
- **Proximal Records Table** – a listing of potentially relevant sites identified just beyond the search criteria.
- **Non-Mapped Records Table** - lists those government records that do not contain sufficient address information to plot within our GIS system, but may still exist within your study area.
- **Addl Maps (where applicable)** – includes Recent Aerial Photo, USGS Topographic maps, FEMA Floodplain & NWI Wetland Map, map of statewide American Indian Lands and our Environmental Impact Areas map, showing the location of suspect sites such as NPL/STNPL, Brownfields, FUDS, etc.... Our Florida well data report is also include with the Standard and Comprehensive formats.
- **Agency List Descriptions** – defines the regulatory databases included in this report along with the dates that each database was last updated by the respective agency and EDM.

At EDM we take great pride in our work, and continually strive to provide you with the most accurate and thorough research service available. This report is only intended as a means to assist in identifying locations that may pose an environmental concern relative to the property under evaluation. Its use is not intended to replace the need for a complete environmental assessment or regulatory file review, but rather as a supplement to the overall evaluation.

Thank you again for selecting EDM as your data research provider. Should you have any questions regarding this report or our service, please feel free to contact us. We appreciate the opportunity to be of service to you and look forward to working with you in the future.

ENVIRONMENTAL DATA MANAGEMENT, INC.

Executive Summary

Client Information	Project Information
Tierra Inc 7351 Temple Terrace Hwy Tampa FL 33637 Client Job No: Client P.O. No:	Custom Radius Research CCP-1 PART B Polk County, Florida EDM Job No# 24922

The following table displays the databases that were included in the research provided, the respective search distance for each database and the number of records identified for each database. The distance values indicated are measured from the centroid of the Subject Property. The absence of records in this table and the Site Summary Tables indicates that our research found no data for other sites located within the specified search distances.

	# Found
EPA DATABASES	
National Priorities List(NPL)	0
Superfund Enterprise Management System Active Site Inventory List(SEMSACTV)	0
Comprehensive Env Response, Compensation & Liability Information System List(CERCLIS)	0
Superfund Enterprise Management System Archived Site Inventory List(SEMSARCH)	0
Archived Cerclis Sites(NFRAP)	0
Emergency Response Notification System List(ERNS)	0
RCRIS Handlers with Corrective Action(CORRACTS)	0
RCRA-Treatment, Storage and/or Disposal Sites(TSD)	0
RCRA-LQG,SQG,CESQG and Transporters(NONTSD)	2
Tribal Tanks List(TRIBLTANKS)	0
Tribal Lust List(TRIBLLUST)	0
Brownfields Management System(USBRWNFLDS)	0
Institutional and/or Engineering Controls(USINSTENG)	0
NPL Liens List(NPLLIENS)	0
Enforcement and Compliance History(ECHO)	4
FDEP DATABASES	
State NPL Equivalent(STNPL)	0
State CERCLIS/SEMS Equivalent(STCERC)	0
Solid Waste Facilities List(SLDWST)	3
Leaking Underground Storage Tanks List(LUST)	1
Underground/Aboveground Storage Tanks(TANKS)	1
State Designated Brownfields(BRWNFLDS)	0
Voluntary Cleanup List(VOLCLNUP)	0
Institutional and/or Engineering Controls(INSTENG)	0
Dry Cleaners List(DRY)	0

*** Disclaimer ***

Please understand that the regulatory databases we utilize were not originally intended for our use, but rather for the source agency's internal tracking of sites for which they have jurisdiction or other interest. As a result of this difference in intended use, their data is frequently found to be incomplete or inaccurate, and is less than ideal for our use. Additionally, limitations exist in mapping data detail and accuracy. Our report is not to be relied upon for any purpose other than to "point" at approximate locations where further evaluation may be warranted. No conclusion can be based solely upon our report. Rather, our report should be used in conjunction with other relevant information to direct your attention at potential problem areas; which should be followed up by site inspections, interviews with relevant personnel and regulatory file review. Readers proceed at their own risk in relying upon this data, in whole or in part, for use within any evaluation. The EDM Service Request Form contains more detailed language with regard to such limitations, the terms of which the reader must accept in their entirety before utilizing this report. If the signed contract is not available to the reader, EDM will gladly furnish a copy upon request. Requests via email authorization are construed to be in accordance with these terms.





Source: US Census Bureau TIGER Files


Map Scale and Property Boundaries are Approximate


Subject Property

CCP-1 PART B
Polk County, Florida

EDM Job No: 24922
September 20, 2019

Approximate Site Boundary

 NPL, STNPL, CERCLIS, SEMSACTV, SEMSARCH and SLDWST sites - 1/2 Mile

 NPILLIENS, CORRACTS, TSD, NFRAP, STCERC, LUST, BRWNFLDS, VOLCLNUP, DRY, ERNS, NONTSD, ECHO, TANKS, & INSTENG sites - 1/8 Mile

Custom Radius Research Report 2017 Aerial Photo



Source: Florida Department of Transportation

Map Scale and Property Boundaries are Approximate

Subject Property

CCP-1 PART B
Polk County, Florida

EDM Job No: 24922
September 20, 2019

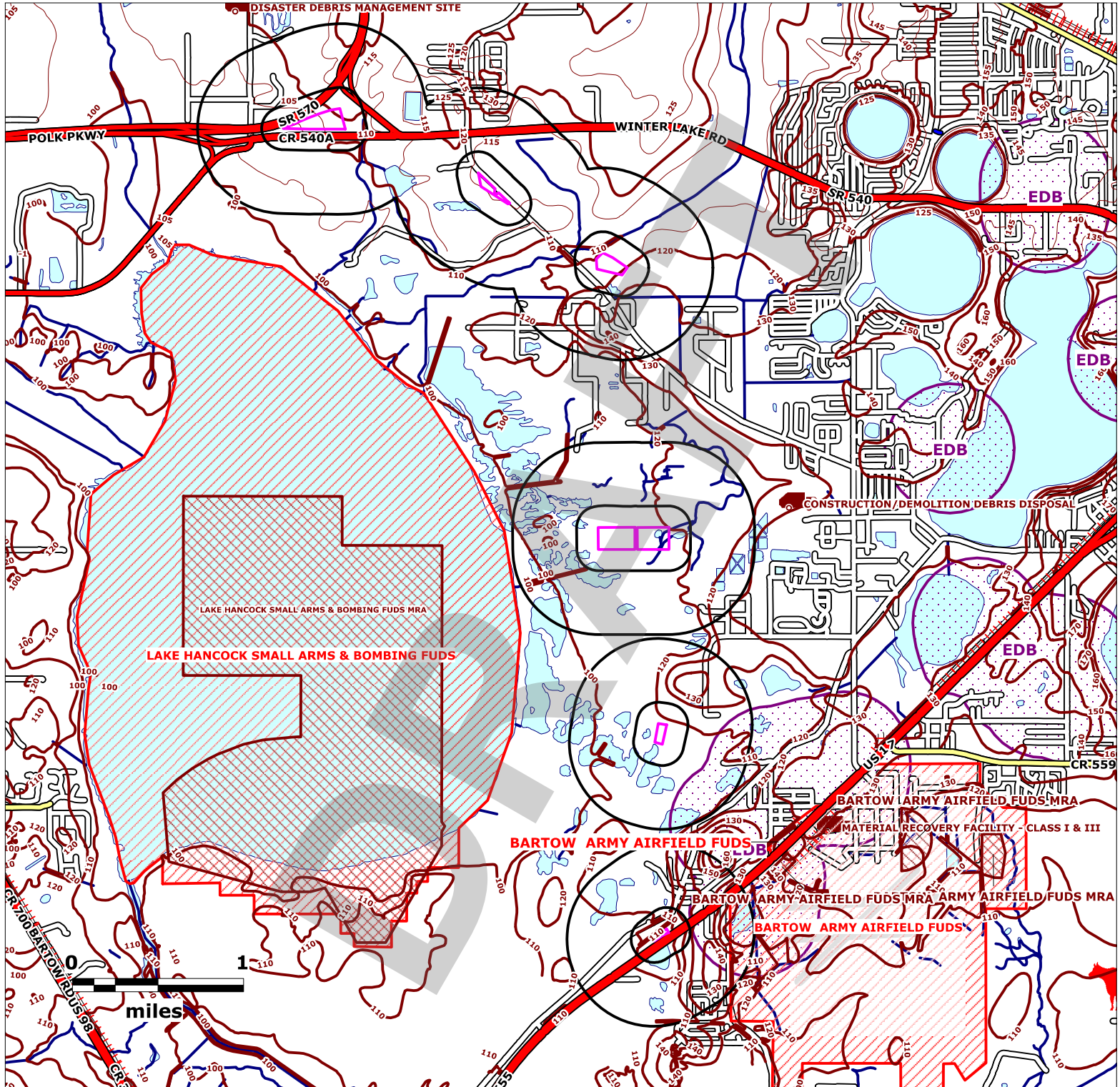
Approximate Site Boundary



NPL, STNPL, CERCLIS, SEMSACTV,
SEMSARCH and SLDWST sites - 1/2 Mile



NPLLIENS, CORRACTS, TSD, NFRAP,
STCERC, LUST, BRWNFLDS, VOLCLNUP,
DRY, ERNS, NONTSD, ECHO, TANKS,
& INSTENG sites - 1/8 Mile












Source: FDEP and USEPA Geodata

Map Scale and Property Boundaries are Approximate

Subject Property

CCP-1 PART B
Polk County, Florida

EDM Job No: 24922
September 20, 2019

	FDEP Brownfield Areas		Formerly Used Defense Sites FUDS		Approximate Site Boundary
	FDEP Brownfield Sites		FUDS Munitions Response Areas		
	USEPA NPL & FDEP STNPL Sites		FDEP Cattle Dipping Vat		
	FDEP Delineated GW Contamination		FDEP Solid Waste Sites		

ENVIRONMENTAL DATA MANAGEMENT

Custom Radius Research Site Summary Table

Report Date: 9/20/2019

Page 1 of 1

MapID & Pgm List	Fac ID No	Site Dist(Mi) & Direction	Site Name	Site Address
1				
ECHO	110043769099	0.08 1	BARTOW AUTO SALVAGE	3450 US HIGHWAY 17 N BARTOW, FL 33830
ECHO	110044886004	0.08 1	SCRAP IT III LLC	3450 US HIGHWAY 17 N BARTOW, FL 33830
NONTSD	FLR000177469	0.08 1	BARTOW AUTO SALVAGE	3450 US HIGHWAY 17 N BARTOW, FL 338309235
2				
LUST	8623579	0.09 1	CHRISTINAS MARKET-MATTIES GROCERY	3470 HWY 17 N BARTOW, FL 33830
TANKS	8623579	0.09 1	CHRISTINAS MARKET-MATTIES GROCERY	3470 HWY 17 N BARTOW, FL 33830
3				
ECHO	110059798759	0.08 1	LAKE HANCOCK	3217 OLD BARTOW EAGLE LAKE RD BARTOW, FL 33830
4				
SLDWST	95912	0.42 1	POLK COUNTY BOARD OF CO COMMISSIONERS	3000 SHEFFIELD RD , FL
5				
ECHO	110020892710	0.10 1	POLK COUNTY HOUSEHOLD HAZARDOUS WASTE FACILITY	5 ENVIRONMENTAL LOOP S WINTER HAVEN, FL 33880
NONTSD	FLR000115329	0.10 1	POLK COUNTY HOUSEHOLD HAZARDOUS WASTE FA	5 ENVIRONMENTAL LOOP S WINTER HAVEN, FL 33880
6				
SLDWST	49722	0.45 1	NORTH POLK CENTRAL LF (SITE 201)	7399 DECASTRO ROAD WINTER HAVEN, FL 33880
SLDWST	95745	0.45 1	POLK COUNTY SOLID WASTE DIVISION	10 ENVIRONMENTAL LOOP , FL



Copyright © 1990-2018 Environmental Data Management, Inc.

For further information please contact us at 800-368-7376

Use of this information is strictly limited by EDM's authorization agreement, acknowledged by our clients for each report.

USEPA RESOURCE CONSERVATION AND RECOVERY ACT INFORMATION (RCRAInfo)

(NONTSD)

Report Date: 9/20/2019

NONTSD Page 1 of 2

FACILITY ID NUMBER, NAME AND LOCATION

FLR000177469
BARTOW AUTO SALVAGE
3450 US HIGHWAY 17 N
BARTOW, FL 33830-9235

[EPA ENVIROFACTS ON LINE REPORT](#) (May Not Be Available For All Records)

CONTACT INFORMATION:

2600 BLAIR STONE ROAD
TALLAHASSEE FL 32399-2400
Contact: NON NOTIFIER
Contact Telephone: 850-245-8707
Contact Email:
Agency Lat - Lon:

MAP ID NUMBER:

Dist (Miles): 0.08
Direction:

1

N
O
N
T
S
D

BRS Reported Waste:

RCRIS INFORMATION

NOTIFICATION DATE: 4/3/2013 SOURCE: INSPECTION

TSD?: NOT A TSD, VERIFIED
GEN STATUS(Fed): CONDITIONALLY EXEMPT SQG(<100 KG PER MONTH)
GEN STATUS(State): CONDITIONALLY EXEMPT SQG(<100 KG PER MONTH)
MIXED WASTE GEN?: N
IMPORTER?: N
OFFSITE RECPT?: N
TRANSPORTER?: NOT A TRANSPORTER, VERIFIED
XFER FAC?: N
SHRT TRM GEN?: N
RECYCLER?: N
NON-NOTIFIER?: NON-NOTIFIER

UNIV WST DEST?: N
ON SITE BURNER?: N
FURNACE?: N
UNDGRND INJ?: NO UNDERGROUND INJECT
UO BURNER?: N
UO PROC?: N
UO RECY?: N
UO TRANS?: N
UO XFER?: N
UO MRKT BRN?: N
UO SPEC MRKT?: N

NOTIFICATION DATE: 3/27/2012 SOURCE: INSPECTION

TSD?: NOT A TSD, VERIFIED
GEN STATUS(Fed): CONDITIONALLY EXEMPT SQG(<100 KG PER MONTH)
GEN STATUS(State): CONDITIONALLY EXEMPT SQG(<100 KG PER MONTH)
MIXED WASTE GEN?: N
IMPORTER?: N
OFFSITE RECPT?: N
TRANSPORTER?: NOT A TRANSPORTER, VERIFIED
XFER FAC?: N
SHRT TRM GEN?: N
RECYCLER?: N
NON-NOTIFIER?: NON-NOTIFIER

UNIV WST DEST?: N
ON SITE BURNER?: N
FURNACE?: N
UNDGRND INJ?: NO UNDERGROUND INJECT
UO BURNER?: N
UO PROC?: N
UO RECY?: N
UO TRANS?: N
UO XFER?: N
UO MRKT BRN?: N
UO SPEC MRKT?: N

NOTIFICATION DATE: 7/28/2011 SOURCE: INSPECTION

TSD?: NOT A TSD, VERIFIED
GEN STATUS(Fed): CONDITIONALLY EXEMPT SQG(<100 KG PER MONTH)
GEN STATUS(State): CONDITIONALLY EXEMPT SQG(<100 KG PER MONTH)
MIXED WASTE GEN?: N
IMPORTER?: N
OFFSITE RECPT?: N
TRANSPORTER?: NOT A TRANSPORTER, VERIFIED
XFER FAC?: N
SHRT TRM GEN?: N
RECYCLER?: N
NON-NOTIFIER?: NON-NOTIFIER

UNIV WST DEST?: N
ON SITE BURNER?: N
FURNACE?: N
UNDGRND INJ?: NO UNDERGROUND INJECT
UO BURNER?: N
UO PROC?: N
UO RECY?: N
UO TRANS?: N
UO XFER?: N
UO MRKT BRN?: N
UO SPEC MRKT?: N

VIOLATION INFO

EVAL DT: 20110728

EVAL AGCY: S

EVAL TYPE: COMPLIANCE EVALUATION INSPECTION ON-SITE

VIOL FOUND?: Y



Copyright © 1990-2018 Environmental Data Management, Inc.
For further information please contact us at 800-368-7376

Use of this information is strictly limited by EDM's authorization agreement, acknowledged by our clients for each report.

USEPA RESOURCE CONSERVATION AND RECOVERY ACT INFORMATION (RCRAInfo)

(NONTSD)

Report Date: 9/20/2019

NONTSD Page 2 of 2

VIOL TYPE: XXS State Statute or Regulation
VIOL DT: 20110728 **VIOL DETER AGCY:** S **VIOL RESP AGCY:** S
ENF DT: 20120124 **ENF AGCY:** S **ENF TYPE:** DEP MEETING
COMPL DT: 20120327

VIOL TYPE: PCR Permit Condition or Requirement
VIOL DT: 20110728 **VIOL DETER AGCY:** S **VIOL RESP AGCY:** S
ENF DT: 20120124 **ENF AGCY:** S **ENF TYPE:** DEP MEETING
COMPL DT: 20120327

VIOL TYPE: XXS State Statute or Regulation
VIOL DT: 20110728 **VIOL DETER AGCY:** S **VIOL RESP AGCY:** S
ENF DT: 20120104 **ENF AGCY:** S **ENF TYPE:** DEP MEETING
COMPL DT: 20120327

DRAFT



Copyright © 1990-2018 Environmental Data Management, Inc.

For further information please contact us at 800-368-7376

Use of this information is strictly limited by EDM's authorization agreement, acknowledged by our clients for each report.

USEPA ENFORCEMENT AND COMPLIANCE HISTORY

(ECHO)

Report Date: 9/20/2019

ECHO Page 1 of 3

FRS ID NUMBER, NAME AND LOCATION:

110043769099
BARTOW AUTO SALVAGE
3450 US HIGHWAY 17 N
BARTOW, FL 33830

EPA REG: 04
TRIBAL?: N
FED FAC?:
COUNTY: POLK
AGENCY LAT/LON: 27.94176/ -81.80184

MAP ID NUMBER:

Dist (Miles): 0.08
Direction:

1

ECHO

ECHO ON LINE REPORTS (May Not Be Available For All Records)

GENERAL FACILITY INFO:

AFS ID?: N
NPDES ID?: N
SDWISID?: N
RCRAInfo ID?: Y
TRIS ID?: N
GHG ID?: N
FAC SIC CODES:
FAC NAICS CODES: 423930
TRIS REPORTER?:
FIPS CODE: 12105
HUC CODE: 03100101
AIR NAA?
WBD CODE:
CONG DIST: 15
CENSUS BLK: 12105015301100
MAJ FAC?:
ACTV PERM?: Y
% MINORITY WITHIN 3 MI: 46.464
POP /SQ MI WITHIN 3 MI: 311.93
TRIBAL WITHIN 25 MI:

INSPS IN 5 YRS: 1
LAST INSP: 4/3/2013
DAYS LAST INSP:
INFORMAL ENF ACTS LAST 5 YRS : 0
LAST INFORMAL ENF ACT :
FORMAL ENF ACTS LAST 5 YRS : 0
LAST FORMAL ENF ACT : 4/23/2012
PENALTIES ASSESSED LAST 5 YRS : 0
TOTAL PENALTIES ASSESSED : 0
LAST PENALTY AMT :

QTRS NONCMPL LAST 5 YRS: 0
PGMS IN NONCOMPL: 0
CURR COMPL: No Violation
CURR IN SNC?: N
3YR QRTLY COMPL STATUS:

LAST EPA INSP:
LAST STATE INSP: 4/3/2013
LAST FORMAL EPA ENF:
LAST FORMAL STATE ENF: 4/23/2012
LAST INFORMAL EPA ENF:
LAST INFORMAL STATE ENF:
FAC FED AGENCY:
FAC IMP WATERS DISCHARGER:

CLEAN AIR ACT INFO:

ICIS AIR ID:
CAA PERMIT TYPE:
NAICS CODE:
SIC CODE:
CAA INSPS IN LAST 5 YRS:
CAA DAYS LAST INSPN:
CAA INFORMAL ENF ACTS LAST 5 YRS:
CAA FORMAL ENF ACTS LAST 5 YRS:
CAA DATE LAST FORMAL ACTION:

CAA TOTAL PENALTIES:
CAA LAST PENALTY DATE:
CAA LAST PENALTY AMT:
CAA QTRS NONCMPL LAST 5 YRS:

CAA CURR COMPL:
CAA CURR HPV/SNC FLAG: N
CAA 3YR QRTLY COMPL STATUS:

CLEAN WATER ACT INFO:

NPDES ID:
CWA PERMIT TYPE:
NAICS CODE:
SIC CODE:
CWA INSPS IN LAST 5 YRS:
CWA DAYS LAST INSPN:
CWA INFORMAL ENF ACTS LAST 5 YRS:
CWA FORMAL ENF ACTS LAST 5 YRS:
CWA DATE LAST FORMAL ACTION:

CWA TOTAL PENALTIES:
CWA LAST PENALTY DATE:
CWA LAST PENALTY AMT:
CWA QTRS NONCMPL LAST 5 YRS:

CWA CURR COMPL:
CWA CURR HPV/SNC FLAG: N
CWA 3YR QRTLY COMPL STATUS:
CWA 3YR QRTS EFFL EXCEED:



Copyright © 1990-2018 Environmental Data Management, Inc.
For further information please contact us at 800-368-7376

Use of this information is strictly limited by EDM's authorization agreement, acknowledged by our clients for each report.

USEPA ENFORCEMENT AND COMPLIANCE HISTORY

(ECHO)

Report Date: 9/20/2019

ECHO Page 2 of 3

RCRIS INFO:

RCRA ID: FLR000177469
RCRA PERMIT TYPE: CESQG
NAICS CODE: 423930
RCRA INSPS IN LAST 5 YRS: 1
RCRA DAYS LAST EVAL: 1740
RCRA INFORMAL ENF ACTS LAST 5 YRS:
RCRA FORMAL ENF ACTS LAST 5 YRS:
RCRA DATE LAST FORMAL ACTION: 04/23/2012

RCRA TOTAL PENALTIES:
RCRA LAST PENALTY DATE:
RCRA LAST PENALTY AMT:
RCRA QTRS NONCMPL LAST 5 YRS: 0

RCRA CURR COMPL: No Violation
RCRA CURR HPV/SNC FLAG: N
RCRA 3YR QRTLTY COMPL STATU

SDWA INFO:

SDWA ID:
SDWA SYST TYPE:
SDWA INFORMAL ENF ACTS LAST 5 YRS:
SDWA FORMAL ENF ACTS LAST 5 YRS:
SDWA CURR COMPL:
SDWA CURR HPV/SNC FLAG: N

TRIS INFO:

TRIS ID:
TRIS TOTAL LBS ONSITE/OFFSITE:
TRIS LBS REL ONSITE:
TRIS LBS TXFR OFFSITE:
TRIS PAST RPTS?:

FED ENF INFO:

TOTAL FEC CASES 5 YRS:
FEC LAST DATE:
FEC TOTAL PENLTY:

GRN HOUSE GAS INFO:

GHG ID: GHG EMISSIONS MT: N

FRS ID NUMBER, NAME AND LOCATION:

110044886004
SCRAP IT III LLC
3450 US HIGHWAY 17 N
BARTOW, FL 33830

EPA REG: 04
TRIBAL?: N
FED FAC?:
COUNTY: POLK
AGENCY LAT/LON: 27.94176/ -81.80184

MAP ID NUMBER:

Dist (Miles): 0.08
Direction:

1

ECHO

ECHO ON LINE REPORTS (May Not Be Available For All Records)

GENERAL FACILITY INFO:

AFS ID?: N
NPDES ID?: Y
SDWISID?: N
RCRAInfo ID?: N
TRIS ID?: N
GHG ID?: N
FAC SIC CODES: 5015
FAC NAICS CODES: 423140
TRIS REPORTER?:
FIPS CODE: FL105
HUC CODE: 03100101
AIR NAA?
WBD CODE:
CONG DIST: 15
CENSUS BLK: 12105015301100
MAJ FAC?:
ACTV PERM?: Y
% MINORITY WITHIN 3 MI: 46.464
POP /SQ MI WITHIN 3 MI: 311.93
TRIBAL WITHIN 25 MI:

INSPS IN 5 YRS: 0
LAST INSP:
DAYS LAST INSP:
INFORMAL ENF ACTS LAST 5 YRS : 0
LAST INFORMAL ENF ACT :
FORMAL ENF ACTS LAST 5 YRS : 0
LAST FORMAL ENF ACT :
PENALTIES ASSESSED LAST 5 YRS : 0
TOTAL PENALTIES ASSESSED : 0
LAST PENALTY AMT :

QTRS NONCMPL LAST 5 YRS: 0
PGMS IN NONCOMPL: 0
CURR COMPL: No Violation
CURR IN SNC?: N
3YR QRTLTY COMPL STATUS:

LAST EPA INSP:
LAST STATE INSP:
LAST FORMAL EPA ENF:
LAST FORMAL STATE ENF:
LAST INFORMAL EPA ENF:
LAST INFORMAL STATE ENF:
FAC FED AGENCY:
FAC IMP WATERS DISCHARGER: Y

CLEAN AIR ACT INFO:

ICIS AIR ID:

CAA TOTAL PENALTIES:

CAA CURR COMPL:



Copyright © 1990-2018 Environmental Data Management, Inc.
For further information please contact us at 800-368-7376

Use of this information is strictly limited by EDM's authorization agreement, acknowledged by our clients for each report.

USEPA ENFORCEMENT AND COMPLIANCE HISTORY

(ECHO)

Report Date: 9/20/2019

ECHO Page 3 of 3

CAA PERMIT TYPE:

NAICS CODE:

SIC CODE:

CAA INSPS IN LAST 5 YRS:

CAA DAYS LAST INSPN:

CAA INFORMAL ENF ACTS LAST 5 YRS:

CAA FORMAL ENF ACTS LAST 5 YRS:

CAA DATE LAST FORMAL ACTION:

CAA LAST PENALTY DATE:

CAA LAST PENALTY AMT:

CAA QTRS NONCMPL LAST 5 YRS:

CAA CURR HPV/SNC FLAG: N

CAA 3YR QRTLY COMPL STATUS:

CLEAN WATER ACT INFO:

NPDES ID: FLR05H230

CWA PERMIT TYPE: Minor

NAICS CODE: 423140

SIC CODE: 5015

CWA INSPS IN LAST 5 YRS:

CWA DAYS LAST INSPN:

CWA INFORMAL ENF ACTS LAST 5 YRS:

CWA FORMAL ENF ACTS LAST 5 YRS:

CWA DATE LAST FORMAL ACTION:

CWA TOTAL PENALTIES:

CWA LAST PENALTY DATE:

CWA LAST PENALTY AMT:

CWA QTRS NONCMPL LAST 5 YRS: 0

CWA CURR COMPL: No Violation

CWA CURR HPV/SNC FLAG: N

CWA 3YR QRTLY COMPL STATUS:

CWA 3YR QTRS EFFL EXCEED:

RCRA INFO:

RCRA ID:

RCRA PERMIT TYPE:

NAICS CODE:

RCRA INSPS IN LAST 5 YRS:

RCRA DAYS LAST EVAL:

RCRA INFORMAL ENF ACTS LAST 5 YRS:

RCRA FORMAL ENF ACTS LAST 5 YRS:

RCRA DATE LAST FORMAL ACTION:

RCRA TOTAL PENALTIES:

RCRA LAST PENALTY DATE:

RCRA LAST PENALTY AMT:

RCRA QTRS NONCMPL LAST 5 YRS:

RCRA CURR COMPL:

RCRA CURR HPV/SNC FLAG: N

RCRA 3YR QRTLY COMPL STATU

SDWA INFO:

SDWA ID:

SDWA SYST TYPE:

SDWA INFORMAL ENF ACTS LAST 5 YRS:

SDWA FORMAL ENF ACTS LAST 5 YRS:

SDWA CURR COMPL:

SDWA CURR HPV/SNC FLAG: N

TRIS INFO:

TRIS ID:

TRIS TOTAL LBS ONSITE/OFFSITE:

TRIS LBS REL ONSITE:

TRIS LBS TXFR OFFSITE:

TRIS PAST RPTS?:

FED ENF INFO:

TOTAL FEC CASES 5 YRS:

FEC LAST DATE:

FEC TOTAL PENLTY:

GRN HOUSE GAS INFO:

GHG ID:

GHG EMISSIONS MT: N



Copyright © 1990-2018 Environmental Data Management, Inc.

For further information please contact us at 800-368-7376

Use of this information is strictly limited by EDM's authorization agreement, acknowledged by our clients for each report.

FDEP LEAKING UNDERGROUND STORAGE TANKS REPORT

(LUST)

Report Date: 9/20/2019

LUST Page 1 of 3

FACILITY ID NUMBER, NAME AND LOCATION

8623579
CHRISTINAS MARKET-MATTIES GROCERY
3470 HWY 17 N
BARTOW, FL 33830-

OWNERSHIP INFO:

PROPERTY OWNER
RED HOLDING LLC
1909 VERANO DR
HAINES CITY, FL 33844-
(863)421-0148
COUNTY ID: 53 POLK
AGCY LAT/LON(DMS): 27,56,31.82 81,48,2.63
FAC OPERATOR: THOMAS, DARRELL
FAC TEL #: (941)533-6428

MAP ID NUMBER:

Dist (Miles): 0.09
Direction:

2

L
U
S
T

FDEP INFORMATION PORTAL ON LINE DOCUMENTS (May Not Be Available For All Records)

FAC STATUS: CLOSED

FAC TYPE: A - Retail Station

SCORE 66 SCORE EFF DT: 1/6/1998 RANK: 1381 SCORE WHEN RANKED: 66 FAC CLNUP STATUS:

DISCHARGE INFORMATION

DISCHARGE DATE: 1/27/1989

Mapid: 2

INSPECTION DATE:

CLEANUP REQUIRED? R - CLEANUP REQUIRED

CLEANUP COMBINED:

CLEANUP WORK STATUS: COMPLETED

INFO SOURCE: E - EDI

DISCH CLNUP STATUS: 7/10/2008 SRCR - SRCR COMPLETE

CONTAMINATED MEDIA?: SOIL: N SUR WATER: N GR WATER: Y MON WELL: Y # DW WELLS CONTAMINATED: 0

POLLUTANT: Y - Unknown/Not Reported

GALLONS OTHER

CLEANUP INFORMATION

Mapid: 2

PGM ELIG OFF:

PGM ELIG SCORE:

PGM ELIG SCORE EFF DT:

PGM ELIG RA

ELIG STAT:

ELIG STAT DT:

APPL RCVD:

LOI:

ELIG LTR SNT:

REDETERM:

DEDUCT AMT:

DEDUCT PD TO DT:

COPAY AMT:

COPAY TO DT:

CAP AMT:

CLNUP PROG:

CLNUP OFF: PCLP53 - FL DOH IN POLK COUNTY

SITE ASSESSMENT

CLNP RESP: -

FUND ELLIG: -

ACTUAL COMPLETION DATE:

PAYMENT DATE:

ACTUAL COST:

REMEDIAL ACTION PLAN

CLEANUP RESP: -

FUND ELLIG: -

ORDER APPRV DATE:

ACTUAL COMPL DATE:

PAYMENT DATE:

ACTUAL COST:

REMEDIAL ACTION

CLEANUP RESP: -

FUND ELLIG: -

ACTUAL COST:

YEARS TO COMPL: 0

SITE REHABILITATION COMPLETION REPORT

ACTION TYPE: SRCR - SITE REHABILITATION COMPLETION REPORT

SUBMIT DATE: 01-04-2008

REVIEW DATE: 01-16-2008

ISSUE DATE: 07-10-2008

COMPL STATUS: A - APPROVED

COMPL STATUS DT: 06-30-2008

COMMENTS:

SOURCE REMOVAL

CLEANUP RESP: -

FUND ELLIG: -

ACTUAL COMPLETION DATE:

FREE PRODUCT REMOVAL?(Y/N):

SOIL REMOVAL?(Y/N):

SOIL TONNAGE REMOVED:

SOIL TREATMENT?(Y/N):

OTHER TREATMENT?:

ALT PROC STATUS:

ALT PROC STATUS DT:

ALT PROC COMMENT:



Copyright © 1990-2018 Environmental Data Management, Inc.

For further information please contact us at 800-368-7376

Use of this information is strictly limited by EDM's authorization agreement, acknowledged by our clients for each report.

FDEP LEAKING UNDERGROUND STORAGE TANKS REPORT

(LUST)

Report Date: 9/20/2019

LUST Page 2 of 3

DISCHARGE INFORMATION

DISCHARGE DATE: 10/19/1991

Mapid: 2

INSPECTION DATE: 3/5/1992

CLEANUP REQUIRED? R - CLEANUP REQUIRED

CLEANUP COMBINED:

CLEANUP WORK STATUS: COMPLETED

INFO SOURCE: A - ABANDONED TANK RESTORATION

DISCH CLNUP STATUS: 7/10/2008 SRCR - SRCR COMPLETE

CONTAMINATED MEDIA?: SOIL:

SUR WATER:

GR WATER:

MON WELL:

DW WELLS CONTAMINATED:

POLLUTANT : B - Unleaded Gas

GALLONS

OTHER

CLEANUP INFORMATION

Mapid: 2

PGM ELIG OFF: PCLP53 - FL DOH IN POLK COUNTY

PGM ELIG SCORE: 66

PGM ELIG SCORE EFF DT: 1/6/1998

PGM ELIG RA 1381

ELIG STAT: E

ELIG STAT DT: 6/9/1992

APPL RCVD: 7/30/1991

LOI:

ELIG LTR SNT: 6/9/1992

REDETERM: N

DEDUCT AMT: 500

DEDUCT PD TO DT: 500

COPAY AMT: 0

COPAY TO DT: 0

CAP AMT:

CLNUP PROG: A - ABANDONED TANK RESTO

CLNUP OFF: PCLP53 - FL DOH IN POLK COUNTY

SITE ASSESSMENT

CLNP RESP: ST - STATE

FUND ELLIG: SCR - PRIORITY SCORE ORDER

ACTUAL COMPLETION DATE:

PAYMENT DATE:

ACTUAL COST:

REMEDIAL ACTION PLAN

CLEANUP RESP: ST - STATE

FUND ELLIG: -

ORDER APPRV DATE:

ACTUAL COMPL DATE:

PAYMENT DATE:

ACTUAL COST:

REMEDIAL ACTION

CLEANUP RESP: ST - STATE

FUND ELLIG: -

ACTUAL COST:

YEARS TO COMPL: 0

SITE REHABILITATION COMPLETION REPORT

ACTION TYPE: SRCR - SITE REHABILITATION COMPLETION REPORT

SUBMIT DATE: 01-04-2008

REVIEW DATE: 01-04-2008

ISSUE DATE: 07-10-2008

COMPL STATUS: A - APPROVED

COMPL STATUS DT: 06-30-2008

COMMENTS:

SOURCE REMOVAL

CLEANUP RESP: -

FUND ELLIG: -

ACTUAL COMPLETION DATE:

FREE PRODUCT REMOVAL?(Y/N):

SOIL REMOVAL? (Y/N):

SOIL TONNAGE REMOVED:

SOIL TREATMENT?(Y/N):

OTHER TREATMENT?:

ALT PROC STATUS:

ALT PROC STATUS DT:

ALT PROC COMMENT:



Copyright © 1990-2018 Environmental Data Management, Inc.

For further information please contact us at 800-368-7376

Use of this information is strictly limited by EDM's authorization agreement, acknowledged by our clients for each report.

FDEP LEAKING UNDERGROUND STORAGE TANKS REPORT

(LUST)

Report Date: 9/20/2019

LUST Page 3 of 3

TANKS Data for LUST Sites:

FACILITY ID NUMBER, NAME AND LOCATION		OWNERSHIP INFORMATION		MAP ID NUMBER: 2	
8623579 CHRISTINAS MARKET-MATTIES GROCERY 3470 HWY 17 N BARTOW, FL 33830		CONTACT TEL #: CONTACT: FACILITY TEL #: 9415336428 COUNTY ID: 53 POLK		Dist (Miles): 0.09 Direction:	
FDEP INFORMATION PORTAL ON LINE DOCUMENTS (May Not Be Available For All Records)					
FAC STATUS: CLOSED		FAC TYPE: Retail Station			
TANK #:	TANK VOL(GALS):	INST.DATE:	TANK CONTENTS:	TANK POSITION:	TANK STATUS (as of...):
1	8000	01-Dec-1977	Unleaded Gas	UNDERGROUND	REMOVED 31-May-1992
CONSTRUCTION TYPE: BALL CHECK VALVE/FIBERGLASS					
PIPING TYPE:					
LEAK MONITORING: UNKNOWN					
TANK #:	TANK VOL(GALS):	INST.DATE:	TANK CONTENTS:	TANK POSITION:	TANK STATUS (as of...):
2	8000	01-Dec-1977	Unleaded Gas	UNDERGROUND	REMOVED 31-May-1992
CONSTRUCTION TYPE: BALL CHECK VALVE/FIBERGLASS					
PIPING TYPE:					
LEAK MONITORING: UNKNOWN					

T
A
N
K
S



Copyright © 1990-2018 Environmental Data Management, Inc.

For further information please contact us at 800-368-7376

Use of this information is strictly limited by EDM's authorization agreement, acknowledged by our clients for each report.

USEPA ENFORCEMENT AND COMPLIANCE HISTORY

(ECHO)

Report Date: 9/20/2019

ECHO Page 1 of 2

FRS ID NUMBER, NAME AND LOCATION:

110059798759
LAKE HANCOCK
3217 OLD BARTOW EAGLE LAKE RD
BARTOW, FL 33830

EPA REG: 04
TRIBAL?: N
FED FAC?:
COUNTY: POLK
AGENCY LAT/LON: 27.943232/ -81.80324

MAP ID NUMBER:

Dist (Miles): 0.08
Direction:

3

ECHO

ECHO ON LINE REPORTS (May Not Be Available For All Records)

GENERAL FACILITY INFO:

AFS ID?: N
NPDES ID?: Y
SDWISID?: N
RCRAInfo ID?: N
TRIS ID?: N
GHG ID?: N
FAC SIC CODES:
FAC NAICS CODES:
TRIS REPORTER?:
FIPS CODE: FL105
HUC CODE: 03100101
AIR NAA?
WBD CODE:
CONG DIST: 15
CENSUS BLK: 12105014702204
MAJ FAC?:
ACTV PERM?: Y
% MINORITY WITHIN 3 MI: 46.108
POP /SQ MI WITHIN 3 MI: 339.15
TRIBAL WITHIN 25 MI:

INSPS IN 5 YRS: 0
LAST INSP:
DAYS LAST INSP:
INFORMAL ENF ACTS LAST 5 YRS : 0
LAST INFORMAL ENF ACT :
FORMAL ENF ACTS LAST 5 YRS : 0
LAST FORMAL ENF ACT :
PENALTIES ASSESSED LAST 5 YRS : 0
TOTAL PENALTIES ASSESSED : 0
LAST PENALTY AMT :

QTRS NONCMPL LAST 5 YRS: 0
PGMS IN NONCOMPL: 0
CURR COMPL: No Violation
CURR IN SNC?: N
3YR QRTLY COMPL STATUS:

LAST EPA INSP:
LAST STATE INSP:
LAST FORMAL EPA ENF:
LAST FORMAL STATE ENF:
LAST INFORMAL EPA ENF:
LAST INFORMAL STATE ENF:
FAC FED AGENCY:
FAC IMP WATERS DISCHARGER:

CLEAN AIR ACT INFO:

ICIS AIR ID:
CAA PERMIT TYPE:
NAICS CODE:
SIC CODE:
CAA INSPS IN LAST 5 YRS:
CAA DAYS LAST INSPN:
CAA INFORMAL ENF ACTS LAST 5 YRS:
CAA FORMAL ENF ACTS LAST 5 YRS:
CAA DATE LAST FORMAL ACTION:

CAA TOTAL PENALTIES:
CAA LAST PENALTY DATE:
CAA LAST PENALTY AMT:
CAA QTRS NONCMPL LAST 5 YRS:

CAA CURR COMPL:
CAA CURR HPV/SNC FLAG: N
CAA 3YR QRTLY COMPL STATUS:

CLEAN WATER ACT INFO:

NPDES ID: FLR10NZ43
CWA PERMIT TYPE: Minor
NAICS CODE:
SIC CODE:
CWA INSPS IN LAST 5 YRS:
CWA DAYS LAST INSPN:
CWA INFORMAL ENF ACTS LAST 5 YRS:
CWA FORMAL ENF ACTS LAST 5 YRS:
CWA DATE LAST FORMAL ACTION:

CWA TOTAL PENALTIES:
CWA LAST PENALTY DATE:
CWA LAST PENALTY AMT:
CWA QTRS NONCMPL LAST 5 YRS: 0

CWA CURR COMPL: No Violation
CWA CURR HPV/SNC FLAG: N
CWA 3YR QRTLY COMPL STATUS:
CWA 3YR QRTS EFFL EXCEED:



Copyright © 1990-2018 Environmental Data Management, Inc.
For further information please contact us at 800-368-7376

Use of this information is strictly limited by EDM's authorization agreement, acknowledged by our clients for each report.

USEPA ENFORCEMENT AND COMPLIANCE HISTORY

(ECHO)

Report Date: 9/20/2019

ECHO Page 2 of 2

RCRIS INFO:

RCRA ID:

RCRA PERMIT TYPE:

NAICS CODE:

RCRA INSPS IN LAST 5 YRS:

RCRA DAYS LAST EVAL:

RCRA INFORMAL ENF ACTS LAST 5 YRS:

RCRA FORMAL ENF ACTS LAST 5 YRS:

RCRA DATE LAST FORMAL ACTION:

RCRA TOTAL PENALTIES:

RCRA LAST PENALTY DATE:

RCRA LAST PENALTY AMT:

RCRA QTRS NONCMPL LAST 5 YRS:

RCRA CURR COMPL:

RCRA CURR HPV/SNC FLAG: N

RCRA 3YR QRTLY COMPL STATU

SDWA INFO:

SDWA ID:

SDWA SYST TYPE:

SDWA INFORMAL ENF ACTS LAST 5 YRS:

SDWA FORMAL ENF ACTS LAST 5 YRS:

SDWA CURR COMPL:

SDWA CURR HPV/SNC FLAG: N

TRIS INFO:

TRIS ID:

TRIS TOTAL LBS ONSITE/OFFSITE:

TRIS LBS REL ONSITE:

TRIS LBS TXFR OFFSITE:

TRIS PAST RPTS?:

FED ENF INFO:

TOTAL FEC CASES 5 YRS:

FEC LAST DATE:

FEC TOTAL PENLTY:

GRN HOUSE GAS INFO:

GHG ID:

GHG EMISSIONS MT: N



Copyright © 1990-2018 Environmental Data Management, Inc.

For further information please contact us at 800-368-7376

Use of this information is strictly limited by EDM's authorization agreement, acknowledged by our clients for each report.

FDEP SOLID WASTE FACILITIES LIST

(SLDWST)

Report Date: 9/20/2019

SLDWST Page 1 of 1

FACILITY ID, NAME AND LOCATION:

95912
POLK COUNTY BOARD OF CO COMMISSIONERS
3000 SHEFFIELD RD
WINTER HAVEN, FL

DISTRICT SWD
COUNTY POLK
SEC/TWN/RN //
AGENCY LAT: ::
AGENCY LON: ::

MAP ID NUMBER:

Dist (Miles): 0.42

Direction:

4

SLDWST

RESP AUTHORITY:

SITE CONTACT:

LAND OWNER:

, 33880

FACILITY CLASS: 754/WASTE TIRE COLLECTOR

CLASS STATUS: REGISTERED (R)

FACILITY CLASS: 754 /WASTE TIRE COLLECTOR

CLASS STATUS: REGISTERED (R)

[FDEP INFORMATION PORTAL ON LINE DOCUMENTS](#) (May Not Be Available For All Records)

[FDEP INFORMATION PORTAL ON LINE REPORTS](#) (May Not Be Available For All Records)



Copyright © 1990-2018 Environmental Data Management, Inc.

For further information please contact us at 800-368-7376

Use of this information is strictly limited by EDM's authorization agreement, acknowledged by our clients for each report.

USEPA RESOURCE CONSERVATION AND RECOVERY ACT INFORMATION (RCRAInfo)

(NONTSD)

Report Date: 9/20/2019

NONTSD Page 1 of 2

FACILITY ID NUMBER, NAME AND LOCATION

FLR000115329
POLK COUNTY HOUSEHOLD HAZARDOUS WASTE FA
5 ENVIRONMENTAL LOOP S
WINTER HAVEN, FL 33880

[EPA ENVIROFACTS ON LINE REPORT](#) (May Not Be Available For All Records)

CONTACT INFORMATION:

10 ENVIRONMENTAL LOOP S
WINTER HAVEN FL 33880-1072
Contact: BROOKS STAYER
Contact Telephone: 863-284-4319
Contact Email: BROOKSSTAYER@POLK-COU
Agency Lat - Lon: 28.012924 -81.840967

MAP ID NUMBER:

Dist (Miles): 0.10
Direction:

5

N
O
N
T
S
D

BRS Reported Waste:

RCRIS INFORMATION

NOTIFICATION DATE: 5/23/2018 **SOURCE:** INSPECTION

TSD?: NOT A TSD, VERIFIED
GEN STATUS(Fed): CONDITIONALLY EXEMPT SQG(<100 KG PER MONTH)
GEN STATUS(State): CONDITIONALLY EXEMPT SQG(<100 KG PER MONTH)
MIXED WSTE GEN?: N
IMPORTER?: N
OFFSITE RECPT?: N
TRANSPORTER?: NOT A TRANSPORTER, VERIFIED
XFER FAC?: N
SHRT TRM GEN?: N
RECYCLER?: N
NON-NOTIFIER?: NON-NOTIFIER

UNIV WST DEST?: N
ON SITE BURNER?: N
FURNACE?: N
UNDGRND INJ?: NO UNDERGROUND INJECT
UO BURNER?: N
UO PROC?: N
UO RECY?: N
UO TRANS?: N
UO XFER?: N
UO MRKT BRN?: N
UO SPEC MRKT?: N

NOTIFICATION DATE: 6/19/2013 **SOURCE:** INSPECTION

TSD?: NOT A TSD, VERIFIED
GEN STATUS(Fed): CONDITIONALLY EXEMPT SQG(<100 KG PER MONTH)
GEN STATUS(State): CONDITIONALLY EXEMPT SQG(<100 KG PER MONTH)
MIXED WSTE GEN?: N
IMPORTER?: N
OFFSITE RECPT?: N
TRANSPORTER?: NOT A TRANSPORTER, VERIFIED
XFER FAC?: N
SHRT TRM GEN?: N
RECYCLER?: N
NON-NOTIFIER?: NON-NOTIFIER

UNIV WST DEST?: N
ON SITE BURNER?: N
FURNACE?: N
UNDGRND INJ?: NO UNDERGROUND INJECT
UO BURNER?: N
UO PROC?: N
UO RECY?: N
UO TRANS?: N
UO XFER?: N
UO MRKT BRN?: N
UO SPEC MRKT?: N

NOTIFICATION DATE: 12/27/2011 **SOURCE:** NOTIFICATION

TSD?: NOT A TSD, VERIFIED
GEN STATUS(Fed): NOT A GENERATOR-VERIFIED
GEN STATUS(State): NOT A GENERATOR-VERIFIED
MIXED WSTE GEN?: N
IMPORTER?: N
OFFSITE RECPT?: N
TRANSPORTER?: NOT A TRANSPORTER, VERIFIED
XFER FAC?: N
SHRT TRM GEN?: N
RECYCLER?: N
NON-NOTIFIER?: NON-NOTIFIER

UNIV WST DEST?: N
ON SITE BURNER?: N
FURNACE?: N
UNDGRND INJ?: NO UNDERGROUND INJECT
UO BURNER?: N
UO PROC?: N
UO RECY?: N
UO TRANS?: N
UO XFER?: N
UO MRKT BRN?: N
UO SPEC MRKT?: N



Copyright © 1990-2018 Environmental Data Management, Inc.

For further information please contact us at 800-368-7376

Use of this information is strictly limited by EDM's authorization agreement, acknowledged by our clients for each report.

USEPA RESOURCE CONSERVATION AND RECOVERY ACT INFORMATION (RCRAInfo)

(NONTSD)

Report Date: 9/20/2019

NONTSD Page 2 of 2

NOTIFICATION DATE: 2/2/2011 **SOURCE:** NOTIFICATION

TSD?: NOT A TSD, VERIFIED
GEN STATUS(Fed): NOT A GENERATOR-VERIFIED
GEN STATUS(State): NOT A GENERATOR-VERIFIED
MIXED WASTE GEN?: N
IMPORTER?: N
OFFSITE RECPT?: N
TRANSPORTER?: NOT A TRANSPORTER, VERIFIED
XFER FAC?: N
SHRT TRM GEN?: N
RECYCLER?: N
NON-NOTIFIER?: NON-NOTIFIER

UNIV WST DEST?: N
ON SITE BURNER?: N
FURNACE?: N
UNDGRND INJ?: NO UNDERGROUND INJECT
UO BURNER?: N
UO PROC?: N
UO RECY?: N
UO TRANS?: N
UO XFER?: N
UO MRKT BRN?: N
UO SPEC MRKT?: N

NOTIFICATION DATE: 1/9/2008 **SOURCE:** NOTIFICATION

TSD?: NOT A TSD, VERIFIED
GEN STATUS(Fed): NOT A GENERATOR-VERIFIED
GEN STATUS(State): NOT A GENERATOR-VERIFIED
MIXED WASTE GEN?: N
IMPORTER?: N
OFFSITE RECPT?: N
TRANSPORTER?: NOT A TRANSPORTER, VERIFIED
XFER FAC?: N
SHRT TRM GEN?: N
RECYCLER?: N
NON-NOTIFIER?: NON-NOTIFIER

UNIV WST DEST?: N
ON SITE BURNER?: N
FURNACE?: N
UNDGRND INJ?: NO UNDERGROUND INJECT
UO BURNER?: N
UO PROC?: N
UO RECY?: N
UO TRANS?: N
UO XFER?: N
UO MRKT BRN?: N
UO SPEC MRKT?: N

NOTIFICATION DATE: 12/15/2004 **SOURCE:** INSPECTION

TSD?: NOT A TSD, VERIFIED
GEN STATUS(Fed): CONDITIONALLY EXEMPT SQG(<100 KG PER MONTH)
GEN STATUS(State): CONDITIONALLY EXEMPT SQG(<100 KG PER MONTH)
MIXED WASTE GEN?: N
IMPORTER?: N
OFFSITE RECPT?: N
TRANSPORTER?: NOT A TRANSPORTER, VERIFIED
XFER FAC?: N
SHRT TRM GEN?: N
RECYCLER?: N
NON-NOTIFIER?: NON-NOTIFIER

UNIV WST DEST?: N
ON SITE BURNER?: N
FURNACE?: N
UNDGRND INJ?: NO UNDERGROUND INJECT
UO BURNER?: N
UO PROC?: N
UO RECY?: N
UO TRANS?: N
UO XFER?: N
UO MRKT BRN?: N
UO SPEC MRKT?: N

VIOLATION INFO



Copyright © 1990-2018 Environmental Data Management, Inc.

For further information please contact us at 800-368-7376

Use of this information is strictly limited by EDM's authorization agreement, acknowledged by our clients for each report.

USEPA ENFORCEMENT AND COMPLIANCE HISTORY

(ECHO)

Report Date: 9/20/2019

ECHO Page 1 of 2

FRS ID NUMBER, NAME AND LOCATION:

110020892710
POLK COUNTY HOUSEHOLD HAZARDOUS WASTE
5 ENVIRONMENTAL LOOP S
WINTER HAVEN, FL 33880

EPA REG: 04
TRIBAL?: N
FED FAC?:
COUNTY: POLK
AGENCY LAT/LON: 28.013225/ -81.840817

MAP ID NUMBER:

Dist (Miles): 0.10
Direction:

5

ECHO

ECHO ON LINE REPORTS (May Not Be Available For All Records)

GENERAL FACILITY INFO:

AFS ID?: N
NPDES ID?: N
SDWISID?: N
RCRAInfo ID?: Y
TRIS ID?: N
GHG ID?: N
FAC SIC CODES:
FAC NAICS CODES: 562111
TRIS REPORTER?:
FIPS CODE: 12105
HUC CODE: 03100101
AIR NAA?
WBD CODE:
CONG DIST: 15
CENSUS BLK: 12105011721202
MAJ FAC?:
ACTV PERM?: Y
% MINORITY WITHIN 3 MI: 17.849
POP /SQ MI WITHIN 3 MI: 327.07
TRIBAL WITHIN 25 MI:

INSPS IN 5 YRS: 1
LAST INSP: 6/18/2013
DAYS LAST INSP:
INFORMAL ENF ACTS LAST 5 YRS : 0
LAST INFORMAL ENF ACT :
FORMAL ENF ACTS LAST 5 YRS : 0
LAST FORMAL ENF ACT :
PENALTIES ASSESSED LAST 5 YRS : 0
TOTAL PENALTIES ASSESSED : 0
LAST PENALTY AMT :

QTRS NONCMPL LAST 5 YRS: 0
PGMS IN NONCOMPL: 0
CURR COMPL: No Violation
CURR IN SNC?: N
3YR QRTLY COMPL STATUS:

LAST EPA INSP:
LAST STATE INSP: 6/18/2013
LAST FORMAL EPA ENF:
LAST FORMAL STATE ENF:
LAST INFORMAL EPA ENF:
LAST INFORMAL STATE ENF:
FAC FED AGENCY:
FAC IMP WATERS DISCHARGER:

CLEAN AIR ACT INFO:

ICIS AIR ID:
CAA PERMIT TYPE:
NAICS CODE:
SIC CODE:
CAA INSPS IN LAST 5 YRS:
CAA DAYS LAST INSPN:
CAA INFORMAL ENF ACTS LAST 5 YRS:
CAA FORMAL ENF ACTS LAST 5 YRS:
CAA DATE LAST FORMAL ACTION:

CAA TOTAL PENALTIES:
CAA LAST PENALTY DATE:
CAA LAST PENALTY AMT:
CAA QTRS NONCMPL LAST 5 YRS:

CAA CURR COMPL:
CAA CURR HPV/SNC FLAG: N
CAA 3YR QRTLY COMPL STATUS:

CLEAN WATER ACT INFO:

NPDES ID:
CWA PERMIT TYPE:
NAICS CODE:
SIC CODE:
CWA INSPS IN LAST 5 YRS:
CWA DAYS LAST INSPN:
CWA INFORMAL ENF ACTS LAST 5 YRS:
CWA FORMAL ENF ACTS LAST 5 YRS:
CWA DATE LAST FORMAL ACTION:

CWA TOTAL PENALTIES:
CWA LAST PENALTY DATE:
CWA LAST PENALTY AMT:
CWA QTRS NONCMPL LAST 5 YRS:

CWA CURR COMPL:
CWA CURR HPV/SNC FLAG: N
CWA 3YR QRTLY COMPL STATUS:
CWA 3YR QRTS EFFL EXCEED:



Copyright © 1990-2018 Environmental Data Management, Inc.
For further information please contact us at 800-368-7376

Use of this information is strictly limited by EDM's authorization agreement, acknowledged by our clients for each report.

USEPA ENFORCEMENT AND COMPLIANCE HISTORY

(ECHO)

Report Date: 9/20/2019

ECHO Page 2 of 2

RCRIS INFO:

RCRA ID: FLR000115329

RCRA PERMIT TYPE: CESQG

NAICS CODE: 562111

RCRA INSPS IN LAST 5 YRS: 1

RCRA DAYS LAST EVAL: 1664

RCRA INFORMAL ENF ACTS LAST 5 YRS:

RCRA FORMAL ENF ACTS LAST 5 YRS:

RCRA DATE LAST FORMAL ACTION:

RCRA TOTAL PENALTIES:

RCRA LAST PENALTY DATE:

RCRA LAST PENALTY AMT:

RCRA QTRS NONCMPL LAST 5 YRS: 0

RCRA CURR COMPL: No Violation

RCRA CURR HPV/SNC FLAG: N

RCRA 3YR QRTL COMPL STATU

SDWA INFO:

SDWA ID:

SDWA SYST TYPE:

SDWA INFORMAL ENF ACTS LAST 5 YRS:

SDWA FORMAL ENF ACTS LAST 5 YRS:

SDWA CURR COMPL:

SDWA CURR HPV/SNC FLAG: N

TRIS INFO:

TRIS ID:

TRIS TOTAL LBS ONSITE/OFFSITE:

TRIS LBS REL ONSITE:

TRIS LBS TXFR OFFSITE:

TRIS PAST RPTS?:

FED ENF INFO:

TOTAL FEC CASES 5 YRS:

FEC LAST DATE:

FEC TOTAL PENLTY:

GRN HOUSE GAS INFO:

GHG ID:

GHG EMISSIONS MT: N



Copyright © 1990-2018 Environmental Data Management, Inc.

For further information please contact us at 800-368-7376

Use of this information is strictly limited by EDM's authorization agreement, acknowledged by our clients for each report.

FDEP SOLID WASTE FACILITIES LIST

(SLDWST)

Report Date: 9/20/2019

SLDWST Page 1 of 2

FACILITY ID, NAME AND LOCATION:

49722
NORTH POLK CENTRAL LF (SITE 201)
7399 DECASTRO ROAD
WINTER HAVEN, FL 33880

DISTRICT SWD
COUNTY POLK
SEC/TWN/RN 30 /28S /25E
AGENCY LAT: 28:1:26.03
AGENCY LON: 81:50:50.1

MAP ID NUMBER:

Dist (Miles): 0.45

Direction:

6

SLDWST

RESP AUTHORITY:

POLK COUNTY WASTE & RECYCLING DIVI

WINTER HAVEN, FL 33880

SITE CONTACT:

ANA WOOD

(863) 284-4319

LAND OWNER:

POLK COUNTY
P O BOX 39
BARTOW, FL 33830

FACILITY CLASS: 100/CLASS I LANDFILL

CLASS STATUS: ACTIVE (A)

FACILITY CLASS: 100 /CLASS I LANDFILL

CLASS STATUS: ACTIVE (A)

FACILITY CLASS: 300/CLASS III LANDFILL

CLASS STATUS: ACTIVE (A)

FACILITY CLASS: 300 /CLASS III LANDFILL

CLASS STATUS: ACTIVE (A)

FACILITY CLASS: 330/SOURCE-SEPARATED ORGANICS PROC. FAC. (SOPF)

CLASS STATUS: ACTIVITY NOT PERMITTED/REGISTERED (N)

FACILITY CLASS: 330 /SOURCE-SEPARATED ORGANICS PROC. FAC. (SOPF)

CLASS STATUS: ACTIVITY NOT PERMITTED/REGISTERED (N)

FACILITY CLASS: 751/WASTE TIRE COLLECTION CENTER

CLASS STATUS: ACTIVE (A)

FACILITY CLASS: 751 /WASTE TIRE COLLECTION CENTER

CLASS STATUS: ACTIVE (A)

FACILITY CLASS: 910/DISASTER DEBRIS MANAGEMENT SITE

CLASS STATUS: INACTIVE (I)

FACILITY CLASS: 910 /DISASTER DEBRIS MANAGEMENT SITE

CLASS STATUS: INACTIVE (I)

[FDEP INFORMATION PORTAL ON LINE DOCUMENTS](#) (May Not Be Available For All Records)

[FDEP INFORMATION PORTAL ON LINE REPORTS](#) (May Not Be Available For All Records)



Copyright © 1990-2018 Environmental Data Management, Inc.

For further information please contact us at 800-368-7376

Use of this information is strictly limited by EDM's authorization agreement, acknowledged by our clients for each report.

FDEP SOLID WASTE FACILITIES LIST

(SLDWST)

Report Date: 9/20/2019

SLDWST Page 2 of 2

FACILITY ID, NAME AND LOCATION:

95745
POLK COUNTY SOLID WASTE DIVISION
10 ENVIRONMENTAL LOOP
WINTER HAVEN, FL

DISTRICT SWD
COUNTY POLK
SEC/TWN/RN //
AGENCY LAT: ::
AGENCY LON: ::

MAP ID NUMBER:

Dist (Miles): 0.45

Direction:

6

SLDWST

RESP AUTHORITY:

SITE CONTACT:

LAND OWNER:

, 33880

FACILITY CLASS: 754/WASTE TIRE COLLECTOR

CLASS STATUS: INACTIVE (I)

FACILITY CLASS: 754 /WASTE TIRE COLLECTOR

CLASS STATUS: INACTIVE (I)

[FDEP INFORMATION PORTAL ON LINE DOCUMENTS](#) (May Not Be Available For All Records)

[FDEP INFORMATION PORTAL ON LINE REPORTS](#) (May Not Be Available For All Records)



Copyright © 1990-2018 Environmental Data Management, Inc.

For further information please contact us at 800-368-7376

Use of this information is strictly limited by EDM's authorization agreement, acknowledged by our clients for each report.

ENVIRONMENTAL DATA MANAGEMENT

Custom Radius Research Proximal Site Summary Table

This table includes mapped sites whose plotted coordinates fall just outside of the ASTM or client defined research distance but whose property boundaries may still extend into the search area. These sites are typically large commercial or industrial tracts that may merit inclusion in the evaluation process. Detail data reports on any of these sites may be requested and will be sent as an addendum to this report at no additional cost.

Report Date: 9/20/2019

Page 1 of 1

MapID Prgm List	Fac ID No	Site Dist(mi) & Direction	Site Name	Site Address
1A				
ECHO	110020553220	0.20 1	DURATEK WALL CORPORATION	3390 U.S. HIGHWAY 17 NORTH BARTOW, FL 33830
ECHO	110039629970	0.20 1	OLDCASTLE PRECAST INC	3390 HWY 17 N BARTOW, FL 33830
ECHO	110041943868	0.20 1	DURATEK WALL SYSTEMS - BUILDIN	UNKNOWN BARTOW, FL 33830
2A				
TANKS	8838653	0.20 1	TYRE EQUIPMENT	HWY 17 N BARTOW, FL 33830
3A				
ECHO	110032760796	0.23 1	HIDDEN CREEK SUBDIVISION	INTERSECTION OF OLD THORNHILL WINTER HAVEN, FL 33880
4A				
ECHO	110060370049	0.18 1	HIDDEN CREEK	UNKNOWN WINTER HAVEN, FL 33880
5A				
ECHO	110044265577	0.20 1	SR 540 (WINTER LAKE RD) @ THORNHILL ROAD	UNKNOWN WINTER HAVEN, FL 33880

ENVIRONMENTAL DATA MANAGEMENT

Custom Radius Research Non-Mapped Records Summary Table

This table is a listing of database records that have not been plotted within our mapping system and could exist within your Study Area. Detail data reports on any of these sites may be requested and will be sent as an addendum to this report at no additional cost.

Report Date: 9/20/2019

Page 1 of 1

Pgm List & Fac ID No	Site Name	Site Address
STCERC		
NONE 533FDER	BARTOW LANDFILL-ABANDONED	HWY 17 BARTOW, FL

DRAFT



Agency List Descriptions

USEPA and State Databases are updated on a quarterly basis. Supplemental Databases are updated on an annual basis.

Florida Department of Environmental Protection (FDEP)

State Designated Brownfields(BRWNFLDS)

The FDEP Brownfields database contains a listing of State Designated Brownfield Areas and Brownfield Sites. Brownfields are typically defined as abandoned, idled or underused industrial and commercial sites where expansion or redevelopment is complicated by real or perceived environmental contamination.

Agency File Date: 7/29/2019

Received by EDM: 8/12/2019

EDM Database Updated: 8/12/2019

Dry Cleaners List(DRY)

The FDEP Dry Cleaning Facilities List is comprised of data from the FDEP Storage Tank and Contamination Monitoring (STCM) database and the Drycleaning Solvent Cleanup Program- Priority Ranking List. It contains a listing of those Dry Cleaning sites (and suspected historical Dry Cleaning sites) who have registered with the FDEP and/or have applied for the Dry Cleaning Solvent Cleanup Program.

Agency File Date: 6/28/2019

Received by EDM: 7/1/2019

EDM Database Updated: 7/1/2019

Institutional and/or Engineering Controls(INSTENG)

The FDEP Institutional Controls Registry Database (INSTENG) contains sites that have had Institutional and/or Engineering Controls implemented to regulate exposure to environmental hazards

Agency File Date: 5/16/2019

Received by EDM: 5/20/2019

EDM Database Updated: 5/20/2019

Leaking Underground Storage Tanks List(LUST)

The FDEP LUST list identifies facilities and/or locations that have notified the FDEP of a possible release of contaminants from petroleum storage systems. This Report is generated from the FDEP Storage Tank and Contamination Monitoring Database (STCM).

Agency File Date: 7/19/2019

Received by EDM: 7/19/2019

EDM Database Updated: 7/22/2019

Solid Waste Facilities List(SLDWST)

The FDEP SLDWST list identifies locations that have been permitted to conduct solid waste handling activities including Landfills, Transfer Stations and sites handling Bio-Hazardous wastes. Sites listed with "##" after the Facility ID Number are historical locations, obtained from documents on record at local agencies.

Agency File Date: 5/20/2019

Received by EDM: 5/20/2019

EDM Database Updated: 5/20/2019

State CERCLIS/SEMS Equivalent(STCERC)

The STCERC list is compiled from the FDEP Site Investigation Section list, the Florida SITES list(historical) and the FDEP Cleanup Sites list. These sites are being assessed and/or cleaned up as a result of identified or suspected contamination from the release of hazardous substances. The FDEP Cleanup Sites list programs include: Brownfields, Petroleum, EPA Superfund (CERCLA), Drycleaning, Responsible Party Cleanup, State Funded Cleanup, State Owned Lands Cleanup and Hazardous Waste Cleanup.

Agency File Date: 8/11/2019

Received by EDM: 8/12/2019

EDM Database Updated: 8/12/2019

State NPL Equivalent(STNPL)

The FDEP State Funded Cleanup list contains facilities and/or locations where there are no viable responsible parties; the site poses an imminent hazard; and the site does not qualify for Superfund or is a low priority for EPA. Remedial efforts at these sites are currently being addressed through State funded cleanup action.

Agency File Date: 8/10/2019

Received by EDM: 8/12/2019

EDM Database Updated: 8/12/2019

Underground/Aboveground Storage Tanks(TANKS)

The FDEP TANKS list contains sites with registered aboveground and underground storage tanks containing regulated petroleum products.

Agency File Date: 6/17/2019

Received by EDM: 6/17/2019

EDM Database Updated: 8/7/2019

Voluntary Cleanup List(VOLCLNUP)

The VOLCLNUP List is derived from the FDEP Brownfields Site Rehabilitation Agreement (BSRA) database and the FDEP Office of Waste Cleanup Responsible Party Sites database. This list identifies those sites that have signed an agreement to Voluntarily cleanup a site and/or sites where legal responsibility for site rehabilitation exists pursuant to Florida Statutes and is being conducted either voluntarily or pursuant to enforcement activity.

Agency File Date: 5/6/2019

Received by EDM: 5/20/2019

EDM Database Updated: 5/20/2019

United States Environmental Protection Agency (EPA)

Comprehensive Env Response, Compensation & Liability Information System List(CERCLIS)

The US EPA Comprehensive Environmental Response, Compensation, and Liability Information System (CERCLIS) database tracks potential and confirmed hazardous waste sites at which the EPA Superfund program has some involvement. It contains sites that are proposed to be on the NPL, are on the NPL and sites that are in the screening and assessment phase for possible inclusion on the NPL. The CERCLIS database was retired in November of 2013 and has been replaced by the Superfund Enterprise Management System (SEMS).

Agency File Date: 11/12/2013

Received by EDM: 2/18/2016

EDM Database Updated: 2/18/2016

RCRIS Handlers with Corrective Action(CORRACTS)

The US EPA Corrective Action Sites (CORRACTS) database is a listing of hazardous waste handlers that have undergone RCRA corrective action activity.

Agency File Date: 5/13/2019

Received by EDM: 5/20/2019

EDM Database Updated: 5/20/2019

Enforcement and Compliance History(ECHO)

The US EPA Enforcement and Compliance History Online (ECHO) database provides integrated compliance and enforcement information on facilities regulated under the Clean Air Act (CAA), Clean Water Act (CWA), Safe Drinking Water Act (SDWA) and Resource Conservation and Recovery Act (RCRA).

Agency File Date: 3/3/2019

Received by EDM: 3/8/2019

EDM Database Updated: 3/11/2019

Emergency Response Notification System List(ERNS)

The Emergency Response Notification System (ERNS) database stores information on oil discharges and hazardous substance releases. The ERNS program is a cooperative data sharing effort among the EPA, DOT and the National Response Center (NRC), which currently provides access to this data.

Agency File Date: 8/4/2019

Received by EDM: 8/12/2019

EDM Database Updated: 8/12/2019

Archived Cerclis Sites(NFRAP)

The US EPA NFRAP list contains archived data of CERCLIS records where the EPA has completed assessment activities and determined that no further steps to list the site on the NPL will be taken. NFRAP sites may be reviewed in the future to determine if they should be returned to CERCLIS based upon newly identified contamination problems at the site. The NFRAP database was retired in November of 2013 and has been replaced by the Superfund Enterprise Management System (SEMS).

Agency File Date: 10/25/2013

Received by EDM: 2/18/2016

EDM Database Updated: 2/18/2016

RCRA-LQG,SQG,CESQG and Transporters(NONTSD)

The EDM NONTSD list is a subset of the US EPA RCRAInfo System and identifies facilities that generate and transport hazardous wastes. These facilities may be Large Quantity Generators (LQG), Small Quantity Generators (SQG), Conditionally Exempt SQG's (CESQG) as well as "Non-Notifiers" and "Non-Handlers".

Agency File Date: 4/29/2019

Received by EDM: 4/30/2019

EDM Database Updated: 5/1/2019

National Priorities List(NPL)

The US EPA National Priorities List (NPL) contains facilities and/or locations where environmental contamination has been confirmed and prioritized for cleanup activities under the Superfund Program. EDM's NPL Report includes sites that are currently on the NPL as well as sites that have been Proposed, Withdrawn and/or Deleted from the list. Previously, information for the NPL was managed under the CERCLIS data management system. In 2014 this system was replaced with the Superfund Enterprise Management System (SEMS). EPA last updated CERCLIS in November of 2013. EDM's NPL Report contains available SEMS data and the archived CERCLIS data relative to NPL sites.

Agency File Date: 6/11/2019

Received by EDM: 7/17/2019

EDM Database Updated: 7/18/2019

NPL Liens List(NPLLIENS)

The US EPA NPL Liens List identifies those sites where under authority granted by CERCLA, liens have been filed against real property in order to recover expenditures from remedial action or when the property owner receives a notice of potential liability.

Agency File Date: 5/14/2019

Received by EDM: 5/28/2019

EDM Database Updated: 5/29/2019

Superfund Enterprise Management System Active Site Inventory List(SEMSACTV)

The US EPA Superfund Enterprise Management System (SEMS) tracks potential and confirmed hazardous waste sites at which the EPA Superfund program has some involvement. The SEMSACTV list contains sites that are on the National Priorities List (NPL) as well as sites that are proposed for or in the screening and assessment phase for possible inclusion on the NPL. SEMS has replaced the CERCLIS database, which was retired in November of 2013.

Agency File Date: 6/11/2019

Received by EDM: 7/1/2019

EDM Database Updated: 7/1/2019

Superfund Enterprise Management System Archived Site Inventory List(SEMSARCH)

The US EPA Superfund Enterprise Management System (SEMS), contains archived data of CERCLIS or SEMS records where the EPA has completed assessment activities and determined that no further steps to list the site on the NPL will be taken. These sites may be reviewed in the future to determine if they should be returned to SEMS based upon newly identified contamination problems at the site. SEMS has replaced the CERCLIS database, which was retired in November of 2013. The SEMSARCH database contains these newly archived records under the SEMS database management system.

Agency File Date: 6/11/2019

Received by EDM: 7/1/2019

EDM Database Updated: 7/2/2019

Tribal Lust List(TRIBLLUST)

EDM's Tribal LUST list is derived from the USEPA Region IV Tribal Tanks database by extracting those sites with indicators of past and/or current releases.

Agency File Date: 2/24/2010

Received by EDM: 3/9/2010

EDM Database Updated: 3/9/2010

Tribal Tanks List(TRIBLTANKS)

The USEPA Region IV Tribal Tanks database lists Active and Closed storage tank facilities on Native American lands.

Agency File Date: 2/24/2010

Received by EDM: 3/9/2010

EDM Database Updated: 3/9/2010

RCRA-Treatment, Storage and/or Disposal Sites(TSD)

The EDM TSD list is a subset of the US EPA RCRAInfo system and identifies facilities that Treat, Store and/or Dispose of hazardous waste.

Agency File Date: 4/29/2019

Received by EDM: 4/30/2019

EDM Database Updated: 5/1/2019

Brownfields Management System(USBRWNFLDS)

The US EPA Brownfields program provides information on environmentally distressed properties that have received Grants or Targeted funding for cleanup and redevelopment . Tribal Brownfield sites are included in the USBRWNFLDS database.

Agency File Date: 5/28/2019

Received by EDM: 5/28/2019

EDM Database Updated: 5/28/2019

Institutional and/or Engineering Controls(USINSTENG)

The USINSTENG list is compiled from data elements contained in the NPL, CORRACTS and USBRWNFLDS lists.

Agency File Date: 5/28/2019

Received by EDM: 5/28/2019

EDM Database Updated: 5/28/2019

DRAFT

Environmental Impact Areas

Brownfield Areas and Sites

The FDEP Brownfields database contains a listing of State Designated Brownfield Areas and Brownfield Sites. Brownfields are typically defined as abandoned, idled or underused industrial and commercial sites where expansion or redevelopment is complicated by real or perceived environmental contamination.

Agency File Date: 7/29/2019

Received by EDM: 8/12/2019

EDM Database Updated: 8/12/2019

<https://floridadep.gov/waste/waste-cleanup/content/brownfields-program>

Cattle Dipping Vats

From the 1910's through the 1950's, vats were filled with an arsenic solution for the control and eradication of the cattle fever tick. Other pesticides such as DDT were also widely used. By State law, all cattle, horses, mules, goats, and other susceptible animals were required to be dipped every 14 days. Under certain circumstances, the arsenic and other pesticides remaining at the site may present an environmental or public health hazard.

Some of the sites have been located and are currently under investigation. However, most of the listings are from old records of the State Livestock Board, which listed each vat as it was put into operation. In addition, some privately operated vats may have existed which were not listed by the Livestock Board. EDM's Cattle Dipping Vat sites are retrieved from the Voluntary Cleanup and STCERC databases. For additional information on Cattle Dipping Vats visit the FDEP and FDOH websites at:

Agency File Date: 10/31/2018

Received by EDM: 1/25/2019

EDM Database Updated: 1/25/2019

<https://floridadep.gov/waste/district-business-support/content/cattle-dipping-vats-cdv>

<http://www.floridahealth.gov/environmental-health/drinking-water/cattledipvathome.html>

Formerly Used Defense Sites

The DoD is responsible for the environmental restoration of properties that were formerly owned by, leased to or otherwise possessed by the United States and operated under the jurisdiction of the Secretary of Defense prior to October 1986. Such properties are known as Formerly Used Defense Sites (FUDS). The Army is the executive agent for the program and the U.S. Army Corps of Engineers manages and directs the program's administration. For more information on the FUDS Program, including maps and data on individual sites, visit the Army Corps of Engineers website at:

Agency File Date: 5/29/2018

Received by EDM: 1/25/2019

EDM Database Updated: 1/25/2019

<http://www.usace.army.mil/Missions/Environmental/Formerly-Used-Defense-Sites/>

FUDS Munitions Response Sites

The DoD developed the Military Munitions Response Program (MMRP) in 2001 to address munitions-related concerns, including explosive safety, environmental, and health hazards from releases of unexploded ordnance (UXO), discarded military munitions (DDM), and munitions constituents (MC) found at locations, other than operational ranges, on active and Base Realignment and Closure (BRAC) installations and Formerly Used Defense Sites (FUDS) properties. The MMRP addresses non-operational range lands with suspected or known hazards from munitions and explosives of concern (MEC) which occurred prior to September 2002, but are not already included with an Installation Response Program (IRP) site cleanup activity. For more information on the FUDS MMRP Program, including maps and data on individual sites, visit the Army Corps of Engineers website at:

Agency File Date: 5/14/2018

Received by EDM: 1/25/2019

EDM Database Updated: 1/25/2019

<http://www.asaie.army.mil/Public/ESOH/mmrp.html>

Groundwater Contamination Areas

The Ground Water Contamination Areas GIS layer is a statewide map showing the boundaries of delineated areas of known groundwater contamination pursuant to Chapter 62-524, F.A.C., New Potable Water Well Permitting In Delineated Areas. 38 Florida counties have been delineated primarily for the agricultural pesticide ethylene dibromide (EDB), and to a much lesser extent, volatile organic and petroleum contaminants. This GIS layer represents approximately 427,897 acres in 38 counties in Florida that have been delineated for groundwater contamination. However, it does not represent all known sources of groundwater contamination for the state of Florida.

This information is intended to be used by regulatory agencies issuing potable water well construction permits in areas of ground water contamination to protect public health and the ground water resource. Permitted water wells in these areas must meet specific well construction criteria and water testing prior to well use. This dataset only indicates the presence or absence of specific groundwater contaminants and does not represent all known sources of groundwater contamination in the state of Florida.

Agency File Date: 11/28/2018

Received by EDM: 1/24/2019

EDM Database Updated: 1/24/2019

<https://floridadep.gov/water/source-drinking-water/content/delineated-areas>

National Priorities List

The US EPA National Priorities List (NPL) contains facilities and/or locations where environmental contamination has been confirmed and prioritized for cleanup activities under the Superfund Program. EDM's NPL site boundaries data include sites that are currently on the NPL as well as sites that have been Proposed, Withdrawn and/or Deleted from the list.

Agency File Date: 11/14/2018

Received by EDM: 12/10/2018

EDM Database Updated: 1/22/2019

<https://www.epa.gov/superfund/search-superfund-sites-where-you-live>

Solid Waste Facilities

The FDEP SLDWST list identifies locations that have been permitted to conduct solid waste handling activities.

Agency File Date: 1/23/2019

Received by EDM: 1/24/2019

EDM Database Updated: 1/25/2019

<https://floridadep.gov/waste>

State Funded Cleanup Sites

The FDEP State Funded Cleanup list contains facilities and/or locations where there are no viable responsible parties; the site poses an imminent hazard; and the site does not qualify for Superfund or is a low priority for EPA. Remedial efforts at these sites are currently being addressed through State funded cleanup action.

Agency File Date: 8/10/2019

Received by EDM: 8/12/2019

EDM Database Updated: 8/12/2019

<https://floridadep.gov/waste/waste-cleanup/documents/state-funded-cleanup-program-site-list>