

September 26, 2019

Hardesty & Hanover, LLC
5110 Eisenhower Boulevard, Suite 310
Tampa, Florida 33634

Attn: Mr. Stephan Heimborg, P.E.

**RE: Letter Report of SHGWT Estimates
Orlando South Ultimate Interchange at SR 528 and SR 91 (Florida's Turnpike)
Orange County, Florida
FPN: 438547-1-32-01
Tierra Project No.: 5511-17-004**

Mr. Heimborg:

As requested, Tierra, Inc. (Tierra) has performed geotechnical services for the subject project. Our services included a review of Seasonal High Groundwater Table (SHGWT) levels at several locations along the proposed roadway alignments. The results of our study and the data obtained are presented in this letter report.

USDA Soil Survey

As part of our study, Tierra reviewed published soils information obtained from the "Soil Survey of Orange County, Florida" published by the United States Department of Agriculture (USDA) Natural Resources Conservation Service (NRCS). A reproduction of the **USDA Soil Survey** Map and a summary table of the reported USDA Soil Survey information (**Table 1**) is provided in the **Attachments**.

It should be noted that information contained in the USDA Soil Survey may not be reflective of actual soil and groundwater conditions, particularly if development in the project vicinity has modified soil conditions or surface/subsurface drainage.

Seasonal High Groundwater Table Estimates

Tierra has reviewed over seven hundred forty (740) hand auger borings and Standard Penetration Test (SPT) borings completed by Tierra and others for past projects at numerous locations along the SR 91 (Florida's Turnpike) and SR 482 (Sand Lake Road) project alignments. The SHGWT level at each boring location was estimated based on soil stratigraphy, measured groundwater levels within the borings, the USDA Soil Survey information, and past experience with similar soil conditions. The estimated SHGWT levels as estimated by Tierra and others at each of the borings locations along the roadway alignments are summarized in **Table 2** in the **Attachments**.

Groundwater conditions will vary with environmental variations and seasonal conditions, such as the frequency and magnitude of rainfall patterns, as well as man-made influences (i.e. existing water management canals, swales, drainage ponds, underdrains and areas of covered soils, such as paved parking lots and sidewalks).

Tierra appreciates the opportunity to be of service to Hardesty & Hanover, LLC on this project. If you have any questions or comments regarding this letter, please contact our office at your earliest convenience.

Sincerely,

TIERRA, INC.



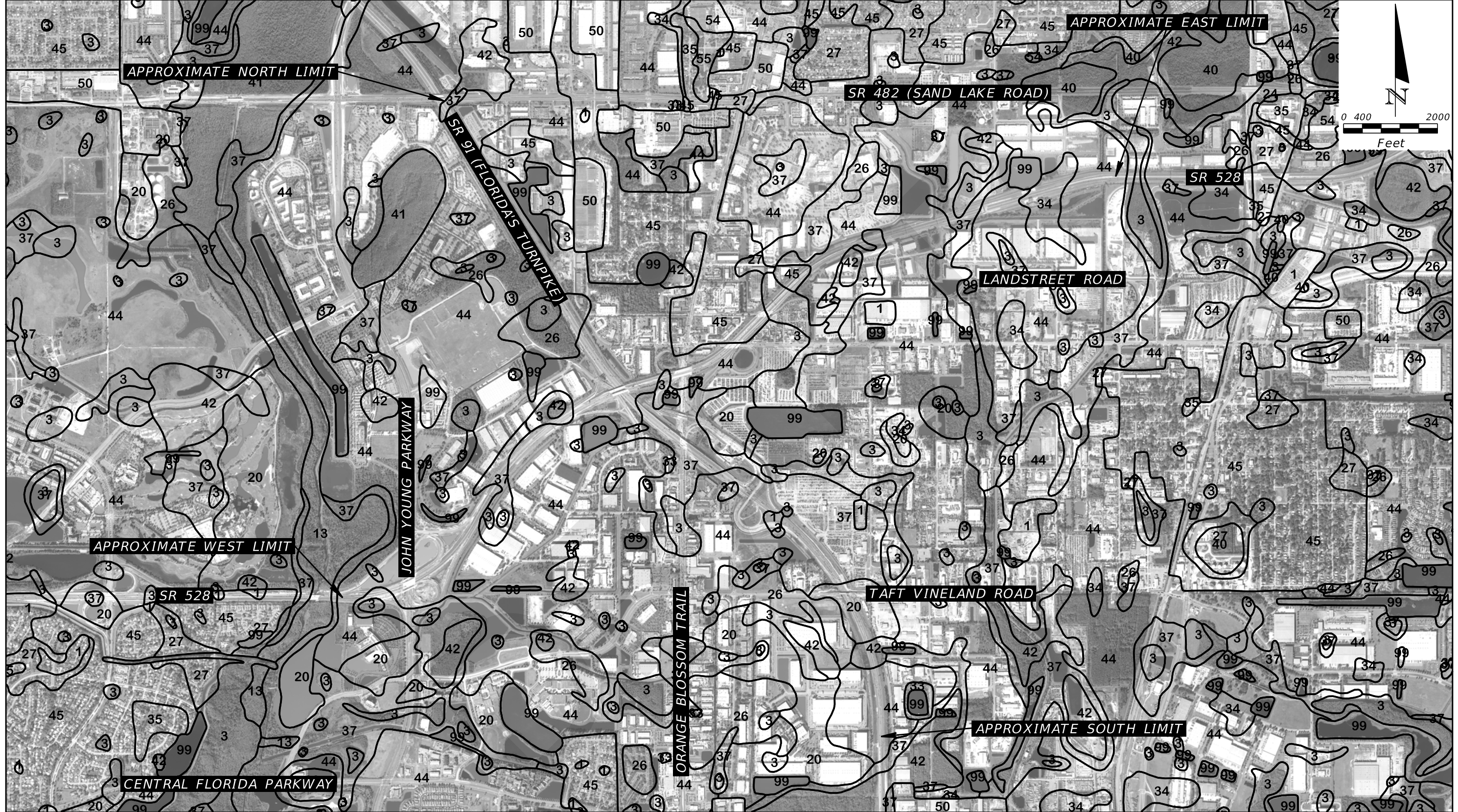
Ryan J. Gray, P.E.
Geotechnical Engineer
Florida License No. 87477



Jeremy A. Sewell, P.E.
Senior Geotechnical Engineer
Florida License No. 62951

Attachments:

- USDA Soil Survey Map
- Table 1 - Summary of USDA NRCS Soil Survey of Orange County, Florida
- Table 2 - Summary of Seasonal High Groundwater Table Estimates For Roadway



REFERENCE: USDA SOIL SURVEY OF ORANGE COUNTY, FLORIDA

TOWNSHIP: 23S 24S
 RANGE: 29E 29E
 SECTION: 33, 34, 35 3, 4, 5, 8, 9, 10, 11

REVISIONS				JEREMY A. SEWELL, P.E. P.E. LICENSE NUMBER 62951 TIERRA, INC. 591 SUSAN B. BRITT COURT WINTER GARDEN, FLORIDA 34787 CERTIFICATE OF AUTHORIZATION NO. 6486	STATE OF FLORIDA DEPARTMENT OF TRANSPORTATION		SHEET NO.
DATE	DESCRIPTION	DATE	DESCRIPTION		ROAD NO.	COUNTY	
					ORANGE	438547-1-32-01	USDA SOIL SURVEY

Table 1
Summary of USDA NRCS Soil Survey of Orange County, Florida
Orlando South Ultimate Interchange at SR 528 and SR 91 (Florida's Turnpike)
Orange County, Florida
FPN: 438547-1-32-01
Tierra Project No.: 5511-17-004

USDA Map Symbol and Soil Name	Depth (in)	Soil Classification		Permeability (in/hr)	pH	Seasonal High Water Table		Risk of Corrosion	
		USCS	AASHTO			Depth (feet)	Months	Uncoated Steel	Concrete
(34) Pomello fine sand, 0 to 5 percent slopes	0-40	SP, SP-SM	A-3	> 20.0	4.5-6.0	2.0-3.5	July-Oct	Low	High
	40-55	SM, SP-SM	A-2-4, A-3	2.0 - 6.0	4.5-6.0				
	55-80	SP, SP-SM	A-3	6.0 - 20.0	4.5-6.0				
(37) St. Johns fine sand	0-24	SP, SP-SM	A-3	6.0 - 20.0	3.5-5.5	0.0-1.0	July-Sept	High	High
	24-44	SM, SP-SM	A-2-4, A-3	0.2 - 2.0	3.5-5.5				
	44-80	SP, SP-SM	A-3	6.0 - 20.0	3.5-5.5				
(40) Samsula muck	0-40	PT	A-8	6.0 - 20.0	2.0-4.4	+2.0-1.0	June-Oct	High	High
	40-80	SM, SP, SP-SM	A-2-4, A-3	6.0 - 20.0	3.5-6.0				
(41) Samsula-Hontoon-Basinger association, depressional	0-34	PT	A-8	6.0 - 20.0	2.0-4.4	+2.0-1.0	June-Oct	High	High
	34-80	SM, SP, SP-SM	A-2-4, A-3	6.0 - 20.0	3.5-6.0				
	0-80	PT	A-8	6.0 - 20.0	2.0-4.4	+2.0-1.0	June-Oct	High	High
	0-6	SP	A-3	6.0 - 20.0	4.5-5.5				
	6-80	SP, SP-SM	A-2-4, A-3	6.0 - 20.0	4.5-5.5				
(42) Sanibel muck	0-11	PT	A-8	6.0 - 20.0	3.5-7.3	+1.0-1.0	June-Oct	High	Low
	11-80	SP, SP-SM	A-3	6.0 - 20.0	3.5-7.3				
(44) Smyrna fine sand	0-17	SP, SP-SM	A-2-4, A-3	6.0 - 20.0	3.5-6.0	0.0-1.0	June-Sept	High	High
	17-27	SM, SP-SM	A-2-4, A-3	0.6 - 6.0	3.5-5.5				
	27-80	SP, SP-SM	A-3	6.0 - 20.0	4.5-5.5				

Table 1
Summary of USDA NRCS Soil Survey of Orange County, Florida
Orlando South Ultimate Interchange at SR 528 and SR 91 (Florida's Turnpike)
Orange County, Florida
FPN: 438547-1-32-01
Tierra Project No.: 5511-17-004

USDA Map Symbol and Soil Name	Depth (in)	Soil Classification		Permeability (in/hr)	pH	Seasonal High Water Table		Risk of Corrosion	
		USCS	AASHTO			Depth (feet)	Months	Uncoated Steel	Concrete
(45) Smyrna-Urban land complex ⁽²⁾	0-18	SP, SP-SM	A-2-4, A-3	6.0 - 20.0	3.5-6.0	0.5-1.5	June-Sept	High	High
	18-28	SM, SP-SM	A-2-4, A-3	0.6 - 6.0	3.5-5.5				
	28-80	SP, SP-SM	A-3	6.0 - 20.0	4.5-5.5				
	---	---	---	---	---	---	---	---	---
(50) Urban land ⁽²⁾	---	---	---	---	---	---	---	---	---

⁽¹⁾ The Pits component consists of excavated areas of unconsolidated or heterogeneous soil and geologic materials which have been removed primarily for use in road construction or as fill material for low areas and for building foundations. Included with this mapping unit are small areas of spoil or stockpiles of variable soil and geologic material around the edges of borrow pits. Borrow pits can range from approximately 5 feet to 40 feet deep. Some of the pit bottoms are seasonally ponded while other areas are filled with water year round. Specific soil information for the Pits mapping unit is not available in the Web Soil Survey

⁽²⁾ The Urban land component consists of miscellaneous areas that are covered by such urban facilities as shopping centers, parking lots, industrial buildings, houses, streets, sidewalks, airports, and related urban structures. In areas mapped as Urban land, 85 percent or more of the surface is covered by asphalt, concrete, buildings, and other impervious surfaces that obscure or alter the soils so that their identification is not feasible. Drainage systems have been established in most areas of Urban land. Depth to the seasonal high water table is dependent upon the functioning of the drainage system. Specific soil information for the Urban land mapping unit is not available in the Web Soil Survey. The table provided herein presents soil information only for non-"Urban land" portions of the soil units.

Table 2
Summary of Seasonal High Groundwater Table Estimates For Roadway
Orlando South Ultimate Interchange at SR 528 and SR 91 (Florida's Turnpike)
Orange County, Florida
FPN: 438547-1-32-01
Tierra Project No.: 5511-17-004

Boring Number	Boring Location		Boring Depth ⁽¹⁾ (feet)	Ground Surface Elevation NAVD88 (feet)	Measured GWT		Date Groundwater Table Recorded	Estimated SHGWT ⁽⁶⁾	
	Station	Offset			Depth Below Ground Surface (feet)	Elevation NAVD88 (feet)		Depth Below Ground Surface (feet)	Elevation NAVD88 (feet)
C/L Const. SR 91 (Florida's Turnpike) (Borings Completed by Others)									
AB-535	2272+00	64' RT	5.0	91.3	GNE ⁽³⁾	< 86.3	11/7/2012	--	--
AB-536	2272+50	8' LT	5.0	92.0	GNE ⁽³⁾	< 87	11/14/2012	--	--
AB-537	2273+00	60' LT	5.0	90.6	GNE ⁽³⁾	< 85.6	10/27/2012	--	--
AB-538	2273+50	74' RT	5.0	87.0	4.5	82.5	11/7/2012	--	--
AB-539	2274+00	8' RT	5.0	91.4	GNE ⁽³⁾	< 86.4	11/14/2012	--	--
AB-540	2274+50	60' LT	5.0	90.6	3.5	87.1	10/27/2012	--	--
AB-541	2275+00	60' RT	15.0	90.2	4.5	85.7	11/7/2012	--	--
AB-542	2275+50	0' LT	5.0	92.1	5.0	87.1	11/14/2012	--	--
AB-543	2276+00	60' LT	5.0	89.8	3.5	86.3	10/27/2012	--	--
AB-544	2276+50	66' RT	5.0	90.0	4.5	85.5	11/8/2012	--	--
AB-545	2277+00	8' RT	5.0	92.1	5.0	87.1	11/14/2012	--	--
AB-546	2277+50	60' LT	5.0	90.6	3.5	87.1	10/27/2012	--	--
AB-547	2278+00	66' RT	5.0	90.2	4.5	85.7	11/8/2012	--	--
AB-548	2278+50	0' LT	5.0	92.1	5.0	87.1	11/14/2012	--	--
AB-549	2279+00	60' LT	5.0	90.7	3.5	87.2	10/27/2012	--	--
AB-550	2279+50	74' RT	5.0	89.1	4.5	84.6	11/8/2012	--	--
AB-551	2280+00	8' RT	15.0	92.1	5.5	86.6	11/14/2012	--	--
AB-552	2280+50	61' LT	5.0	90.3	3.5	86.8	10/27/2012	--	--
AB-553	2281+00	69' RT	5.0	89.9	4.5	85.4	11/8/2012	--	--
AB-554	2281+50	0' LT	5.0	92.1	GNE ⁽³⁾	< 87.1	11/14/2012	--	--
AB-555	2282+00	60' LT	5.0	90.3	3.5	86.8	10/27/2012	--	--
AB-556	2282+50	70' RT	5.0	90.4	4.5	85.9	11/8/2012	--	--
AB-557	2283+00	8' RT	5.0	91.9	GNE ⁽³⁾	< 86.9	11/14/2012	--	--
AB-558	2283+50	55' LT	5.0	90.9	4.0	86.9	10/27/2012	--	--
AB-559	2284+00	75' RT	5.0	89.8	4.5	85.3	11/8/2012	--	--
AB-560	2284+50	0' LT	5.0	92.0	GNE ⁽³⁾	< 87	11/14/2012	--	--

Table 2
Summary of Seasonal High Groundwater Table Estimates For Roadway
Orlando South Ultimate Interchange at SR 528 and SR 91 (Florida's Turnpike)
Orange County, Florida
FPN: 438547-1-32-01
Tierra Project No.: 5511-17-004

Boring Number	Boring Location		Boring Depth ⁽¹⁾ (feet)	Ground Surface Elevation NAVD88 (feet)	Measured GWT		Date Groundwater Table Recorded	Estimated SHGWT ⁽⁶⁾	
	Station	Offset			Depth Below Ground Surface (feet)	Elevation NAVD88 (feet)		Depth Below Ground Surface (feet)	Elevation NAVD88 (feet)
AB-561	2285+00	60' LT	15.0	90.1	4.0	86.1	10/27/2012	--	--
AB-562	2285+50	79' RT	5.0	90.1	4.5	85.6	11/8/2012	--	--
AB-563	2286+00	8' RT	5.0	92.0	5.0	87.0	11/14/2012	--	--
AB-564	2286+50	55' LT	5.0	91.1	4.0	87.1	10/27/2012	--	--
AB-565	2287+00	62' RT	5.0	92.2	5.0	87.2	11/8/2012	--	--
AB-566	2287+50	0' LT	5.0	92.2	GNE ⁽³⁾	< 87.2	11/14/2012	--	--
AB-567	2288+00	60' LT	5.0	91.1	4.0	87.1	10/27/2012	--	--
AB-568	2288+50	54' RT	5.0	93.4	5.0	88.4	11/8/2012	--	--
AB-569	2289+00	8' RT	5.0	92.9	GNE ⁽³⁾	< 87.9	11/14/2012	--	--
AB-570	2289+50	65' LT	5.0	90.5	3.5	87.0	10/27/2012	--	--
AB-571	2290+00	72' RT	15.0	92.2	4.5	87.7	11/8/2012	--	--
AB-572	2290+50	0' LT	5.0	93.3	GNE ⁽³⁾	< 88.3	11/14/2012	--	--
AB-573	2291+00	65' LT	5.0	91.3	4.0	87.3	10/27/2012	--	--
AB-574	2291+50	60' RT	5.0	93.5	5.0	88.5	11/8/2012	--	--
AB-575	2292+00	10' RT	5.0	93.5	GNE ⁽³⁾	< 88.5	11/14/2012	--	--
AB-576	2292+50	63' LT	5.0	91.8	4.0	87.8	10/27/2012	--	--
AB-577	2293+00	63' RT	5.0	93.8	GNE ⁽³⁾	< 88.8	11/8/2012	--	--
AB-578	2293+50	0' LT	5.0	93.9	GNE ⁽³⁾	< 88.9	11/14/2012	--	--
AB-579	2294+00	60' LT	5.0	92.3	4.0	88.3	10/27/2012	--	--
AB-580	2294+50	66' RT	5.0	94.0	GNE ⁽³⁾	< 89	11/8/2012	--	--
AB-581	2295+00	8' RT	15.0	94.2	5.5	88.7	11/15/2012	--	--
AB-582	2295+50	58' LT	5.0	92.7	4.0	88.7	10/27/2012	--	--
AB-583	2296+00	61' RT	5.0	94.4	5.0	89.4	11/8/2012	--	--
AB-584	2296+50	0' LT	5.0	94.6	GNE ⁽³⁾	< 89.6	11/15/2012	--	--
AB-585	2297+00	65' LT	5.0	92.0	4.0	88.0	10/27/2012	--	--
AB-586	2297+50	60' RT	5.0	94.5	5.0	89.5	11/8/2012	--	--
AB-587	2298+00	8' RT	5.0	94.9	5.0	89.9	11/15/2012	--	--

Table 2
Summary of Seasonal High Groundwater Table Estimates For Roadway
Orlando South Ultimate Interchange at SR 528 and SR 91 (Florida's Turnpike)
Orange County, Florida
FPN: 438547-1-32-01
Tierra Project No.: 5511-17-004

Boring Number	Boring Location		Boring Depth ⁽¹⁾ (feet)	Ground Surface Elevation NAVD88 (feet)	Measured GWT		Date Groundwater Table Recorded	Estimated SHGWT ⁽⁶⁾	
	Station	Offset			Depth Below Ground Surface (feet)	Elevation NAVD88 (feet)		Depth Below Ground Surface (feet)	Elevation NAVD88 (feet)
AB-588	2298+50	65' LT	5.0	92.0	3.5	88.5	10/27/2012	--	--
AB-589	2299+00	66' RT	5.0	94.2	5.0	89.2	11/8/2012	--	--
AB-590	2299+50	0' LT	5.0	95.2	5.0	90.2	11/15/2012	--	--
AB-591	2300+00	60' LT	15.0	93.4	5.0	88.4	10/27/2012	--	--
AB-592	2300+50	66' RT	5.0	95.3	5.0	90.3	11/8/2012	--	--
AB-593	2301+00	10' RT	5.0	95.4	5.0	90.4	11/15/2012	--	--
AB-594	2301+50	60' LT	5.0	93.9	3.5	90.4	10/27/2012	--	--
AB-595	2302+00	68' RT	5.0	95.1	GNE ⁽³⁾	< 90.1	11/8/2012	--	--
AB-596	2302+50	0' LT	5.0	95.9	5.0	90.9	11/15/2012	--	--
AB-597	2303+00	70' LT	5.0	93.0	3.5	89.5	10/27/2012	--	--
AB-598	2303+50	66' RT	5.0	95.5	GNE ⁽³⁾	< 90.5	11/8/2012	--	--
AB-599	2304+00	10' RT	5.0	96.3	5.0	91.3	11/15/2012	--	--
AB-600	2304+50	71' LT	5.0	92.8	3.5	89.3	10/27/2012	--	--
AB-601	2305+00	73' RT	15.0	94.7	5.0	89.7	11/8/2012	--	--
AB-602	2305+50	0' LT	5.0	96.7	5.0	91.7	11/15/2012	--	--
AB-603	2306+00	68' LT	5.0	93.9	3.5	90.4	10/25/2012	--	--
AB-604	2306+50	62' RT	5.0	96.9	5.0	91.9	11/8/2012	--	--
AB-605	2307+00	10' RT	5.0	96.8	5.0	91.8	11/15/2012	--	--
AB-606	2307+50	68' LT	5.0	94.6	3.5	91.1	10/25/2012	--	--
AB-607	2308+00	64' RT	5.0	97.0	5.0	92.0	11/8/2012	--	--
AB-608	2308+50	0' LT	5.0	97.2	5.0	92.2	11/15/2012	--	--
AB-609	2309+00	68' LT	5.0	94.7	3.5	91.2	10/25/2012	--	--
AB-610	2309+50	64' RT	5.0	97.6	5.0	92.6	11/8/2012	--	--
AB-611	2310+00	8' RT	15.0	97.2	5.0	92.2	11/15/2012	--	--
AB-612	2310+50	75' LT	5.0	95.3	3.5	91.8	10/25/2012	--	--
AB-613	2311+00	66' RT	5.0	97.6	5.0	92.6	11/8/2012	--	--
AB-614	2311+50	0' LT	5.0	97.8	5.0	92.8	11/15/2012	--	--

Table 2
Summary of Seasonal High Groundwater Table Estimates For Roadway
Orlando South Ultimate Interchange at SR 528 and SR 91 (Florida's Turnpike)
Orange County, Florida
FPN: 438547-1-32-01
Tierra Project No.: 5511-17-004

Boring Number	Boring Location		Boring Depth ⁽¹⁾ (feet)	Ground Surface Elevation NAVD88 (feet)	Measured GWT		Date Groundwater Table Recorded	Estimated SHGWT ⁽⁶⁾	
	Station	Offset			Depth Below Ground Surface (feet)	Elevation NAVD88 (feet)		Depth Below Ground Surface (feet)	Elevation NAVD88 (feet)
AB-615	2312+00	63' LT	5.0	96.5	3.5	93.0	10/25/2012	--	--
AB-616	2312+30	60' RT	5.0	100.0	5.0	95.0	11/8/2012	--	--
AB-617	2312+85	8' RT	5.0	97.7	GNE ⁽³⁾	< 92.7	11/15/2012	--	--
AB-618	2313+30	68' LT	5.0	102.5	4.0	98.5	10/25/2012	--	--
AB-619	2314+00	74' RT	5.0	97.5	5.0	92.5	11/8/2012	--	--
AB-620	2314+50	0' LT	5.0	98.6	5.0	93.6	11/15/2012	--	--
AB-621	2315+00	68' LT	15.0	96.6	3.5	93.1	10/25/2012	--	--
AB-622	2315+50	71' RT	5.0	97.2	4.5	92.7	11/8/2012	--	--
AB-623	2316+00	10' RT	5.0	98.9	5.0	93.9	11/15/2012	--	--
AB-624	2316+50	78' LT	5.0	95.7	3.5	92.2	10/25/2012	--	--
AB-625	2317+00	69' RT	5.0	97.3	4.5	92.8	11/8/2012	--	--
AB-626	2317+50	0' LT	5.0	99.1	5.0	94.1	11/15/2012	--	--
AB-627	2318+00	73' LT	5.0	96.4	3.5	92.9	10/25/2012	--	--
AB-628	2318+50	76' RT	5.0	97.0	4.5	92.5	11/8/2012	--	--
AB-629	2319+00	10' RT	5.0	99.2	5.0	94.2	11/15/2012	--	--
AB-630	2319+50	90' LT	5.0	95.0	3.5	91.5	10/25/2012	--	--
AB-631	2320+00	81' RT	15.0	94.4	4.0	90.4	11/8/2012	--	--
AB-632	2320+50	0' LT	5.0	99.0	5.0	94.0	11/15/2012	--	--
AB-633	2321+00	90' LT	5.0	95.0	3.5	91.5	10/25/2012	--	--
AB-634	2321+50	80' RT	5.0	95.8	4.0	91.8	11/8/2012	--	--
AB-635	2322+00	10' RT	5.0	98.9	5.0	93.9	11/15/2012	--	--
AB-636	2322+50	91' LT	5.0	94.7	2.0	92.7	10/25/2012	--	--
AB-637	2323+00	82' RT	5.0	95.9	4.0	91.9	11/8/2012	--	--
AB-638	2323+50	0' LT	5.0	98.7	5.0	93.7	11/15/2012	--	--
AB-639	2324+00	91' LT	5.0	94.4	3.5	90.9	10/25/2012	--	--
AB-640	2324+50	77' RT	5.0	96.4	4.0	92.4	11/8/2012	--	--
AB-641	2325+00	10' RT	15.0	98.7	5.0	93.7	11/16/2012	--	--

Table 2
Summary of Seasonal High Groundwater Table Estimates For Roadway
Orlando South Ultimate Interchange at SR 528 and SR 91 (Florida's Turnpike)
Orange County, Florida
FPN: 438547-1-32-01
Tierra Project No.: 5511-17-004

Boring Number	Boring Location		Boring Depth ⁽¹⁾ (feet)	Ground Surface Elevation NAVD88 (feet)	Measured GWT		Date Groundwater Table Recorded	Estimated SHGWT ⁽⁶⁾	
	Station	Offset			Depth Below Ground Surface (feet)	Elevation NAVD88 (feet)		Depth Below Ground Surface (feet)	Elevation NAVD88 (feet)
AB-642	2325+50	91' LT	5.0	94.1	3.5	90.6	10/25/2012	--	--
AB-643	2326+00	85' RT	5.0	95.7	4.0	91.7	11/8/2012	--	--
AB-644	2326+50	0' LT	5.0	98.7	5.0	93.7	11/16/2012	--	--
AB-645	2327+00	91' LT	5.0	94.3	3.5	90.8	10/25/2012	--	--
AB-646	2327+50	82' RT	5.0	95.8	4.0	91.8	11/8/2012	--	--
AB-647	2328+00	8' RT	5.0	98.8	5.0	93.8	11/16/2012	--	--
AB-648	2328+50	91' LT	5.0	94.5	3.5	91.0	10/25/2012	--	--
AB-649	2329+00	77' RT	5.0	96.5	4.0	92.5	11/9/2012	--	--
AB-650	2329+50	0' LT	5.0	98.7	5.0	93.7	11/16/2012	--	--
AB-651	2330+00	90' LT	15.0	94.4	4.0	90.4	10/25/2012	--	--
AB-652	2330+50	82' RT	5.0	95.7	4.0	91.7	11/9/2012	--	--
AB-653	2331+00	12' RT	5.0	98.6	5.0	93.6	11/16/2012	--	--
AB-654	2331+50	111' LT	5.0	93.4	3.5	89.9	10/25/2012	--	--
AB-655	2332+00	82' RT	5.0	94.9	4.0	90.9	11/9/2012	--	--
AB-656	2332+50	0' LT	5.0	98.7	5.0	93.7	11/16/2012	--	--
AB-657	2333+00	61' LT	5.0	97.8	GNE ⁽³⁾	< 92.8	10/25/2012	--	--
AB-658	2333+50	76' RT	5.0	97.7	5.0	92.7	11/9/2012	--	--
AB-659	2334+00	10' RT	5.0	98.8	5.0	93.8	11/16/2012	--	--
AB-660	2334+50	76' LT	5.0	97.5	3.5	94.0	10/25/2012	--	--
AB-661	2335+00	82' RT	15.0	99.0	6.0	93.0	11/9/2012	--	--
AB-662	2335+50	0' LT	5.0	98.8	5.0	93.8	11/16/2012	--	--
AB-663	2336+00	73' LT	5.0	96.0	3.5	92.5	10/25/2012	--	--
AB-664	2336+50	59' RT	5.0	99.4	GNE ⁽³⁾	< 94.4	11/9/2012	--	--
AB-665	2337+00	8' RT	5.0	98.6	5.0	93.6	11/16/2012	--	--
AB-666	2337+50	68' LT	5.0	97.1	3.5	93.6	10/25/2012	--	--
AB-667	2338+00	76' RT	5.0	96.8	GNE ⁽³⁾	< 91.8	11/9/2012	--	--
AB-668	2338+50	0' LT	5.0	98.8	5.0	93.8	11/16/2012	--	--

Table 2
Summary of Seasonal High Groundwater Table Estimates For Roadway
Orlando South Ultimate Interchange at SR 528 and SR 91 (Florida's Turnpike)
Orange County, Florida
FPN: 438547-1-32-01
Tierra Project No.: 5511-17-004

Boring Number	Boring Location		Boring Depth ⁽¹⁾ (feet)	Ground Surface Elevation NAVD88 (feet)	Measured GWT		Date Groundwater Table Recorded	Estimated SHGWT ⁽⁶⁾	
	Station	Offset			Depth Below Ground Surface (feet)	Elevation NAVD88 (feet)		Depth Below Ground Surface (feet)	Elevation NAVD88 (feet)
AB-669	2339+00	58' LT	5.0	97.6	4.0	93.6	10/25/2012	--	--
AB-670	2339+50	87' RT	5.0	94.2	4.0	90.2	11/9/2012	--	--
AB-671	2340+00	8' RT	15.0	98.8	5.0	93.8	11/16/2012	--	--
AB-672	2340+50	102' LT	5.0	96.0	4.0	92.0	10/25/2012	--	--
AB-673	2341+00	83' RT	5.0	95.0	4.0	91.0	11/9/2012	--	--
AB-674	2341+50	8' RT	5.0	98.8	5.0	93.8	11/16/2012	--	--
AB-675	2342+00	85' LT	5.0	97.4	5.0	92.4	10/25/2012	--	--
AB-676	2342+50	70' RT	5.0	102.3	4.5	97.8	11/9/2012	--	--
AB-677	2342+76	10' RT	5.0	98.8	5.0	93.8	11/16/2012	--	--
AB-678	2343+50	95' LT	5.0	94.3	4.0	90.3	10/25/2012	--	--
AB-679	2344+00	81' RT	5.0	95.6	4.5	91.1	11/9/2012	--	--
344L2	2344+00	150' LT	10.0	--	3.0	--	9/27/2003	3.0	--
AB-681	2345+00	115' LT	5.0	92.0	4.0	88.0	10/25/2012	--	--
345L	2345+00	60' LT	5.0	--	GNE ⁽³⁾	--	12/4/2002	4.5	--
345R	2345+00	60' RT	5.0	--	4.2	--	12/3/2002	4.2	--
P1-345L	2345+00	105' LT	10.0	--	0.2	--	9/17/2003	0.2	--
AB-682	2345+50	59' RT	5.0	100.3	GNE ⁽³⁾	< 95.3	11/9/2012	--	--
346L2	2346+00	155' LT	5.0	--	2.3	--	8/19/2003	2.3	--
346R	2346+00	12' RT	5.0	--	4.8	--	10/30/2002	4.2	--
346L	2346+00	60' LT	20.0	--	4.8	--	12/18/2002	4.3	--
P2-346R	2346+00	130' RT	10.0	--	0.2	--	9/27/2003	0.2	--
AB-684	2346+50	110' LT	5.0	92.8	4.0	88.8	10/25/2012	--	--
AB-685	2347+00	107' RT	5.0	96.5	5.0	91.5	11/16/2012	--	--
347L	2347+00	12' LT	5.0	--	GNE ⁽³⁾	--	10/30/2002	4.5	--
347R	2347+00	60' RT	5.0	--	2.6	--	12/3/2002	2.6	--
AB-687	2348+00	125' LT	5.0	91.9	4.5	87.4	10/25/2012	--	--
348L	2348+00	60' LT	5.0	--	GNE ⁽³⁾	--	12/4/2002	--	--

Table 2
Summary of Seasonal High Groundwater Table Estimates For Roadway
Orlando South Ultimate Interchange at SR 528 and SR 91 (Florida's Turnpike)
Orange County, Florida
FPN: 438547-1-32-01
Tierra Project No.: 5511-17-004

Boring Number	Boring Location		Boring Depth ⁽¹⁾ (feet)	Ground Surface Elevation NAVD88 (feet)	Measured GWT		Date Groundwater Table Recorded	Estimated SHGWT ⁽⁶⁾	
	Station	Offset			Depth Below Ground Surface (feet)	Elevation NAVD88 (feet)		Depth Below Ground Surface (feet)	Elevation NAVD88 (feet)
348L2	2348+00	155' LT	5.0	--	5.0	--	8/19/2003	4.5	--
348R	2348+00	60' RT	5.0	--	GNE ⁽³⁾	--	12/3/2002	--	--
P1-348L	2348+00	104' LT	10.0	--	0.8	--	9/27/2003	0.8	--
AB-688	2348+50	102' RT	5.0	99.8	5.0	94.8	11/16/2012	--	--
349L	2349+00	60' LT	5.0	--	GNE ⁽³⁾	--	12/5/2002	4.5	--
349R	2349+00	12' RT	5.0	--	GNE ⁽³⁾	--	10/30/2002	4.5	--
349R2	2349+00	176' RT	10.0	--	3.0	--	9/27/2003	3.0	--
TH-349R	2349+00	120' RT	20.0	94.4	ABG ⁽⁵⁾	> 94.4	9/27/2003	ABG ⁽⁷⁾	> 94.4
AB-690	2349+50	130' LT	5.0	92.0	4.0	88.0	10/25/2012	--	--
AB-691	2350+00	127' RT	8.0	95.8	5.0	90.8	11/16/2012	--	--
350L	2350+00	12' LT	5.0	--	GNE ⁽³⁾	--	10/30/2002	--	--
AB-693	2351+00	130' LT	5.0	93.5	GNE ⁽³⁾	< 88.5	10/25/2012	--	--
351L	2351+00	60' LT	5.0	--	GNE ⁽³⁾	--	12/5/2002	--	--
351L2	2351+00	160' LT	5.0	--	3.6	--	8/19/2003	4.5	--
351R	2351+00	60' RT	5.0	--	GNE ⁽³⁾	--	12/3/2002	--	--
P2-351R	2351+00	136' RT	10.0	--	0.3	--	9/17/2003	0.3	--
AB-694	2351+50	122' RT	5.0	96.5	5.0	91.5	11/16/2012	--	--
352L	2352+00	60' LT	5.0	--	GNE ⁽³⁾	--	12/4/2002	--	--
352R	2352+00	12' RT	5.0	--	GNE ⁽³⁾	--	10/30/2002	--	--
352R2	2352+00	180' RT	5.0	--	2.2	--	9/17/2003	2.2	--
P1-352L	2352+00	128' LT	10.0	--	2.5	--	9/27/2003	1.0	--
TH-352	2352+00	C/L	30.0	106.0	GNA ⁽⁴⁾	--	8/27/2003	--	--
353L	2353+00	12' LT	5.0	--	GNE ⁽³⁾	--	10/30/2002	--	--
353R	2353+00	60' RT	5.0	--	GNE ⁽³⁾	--	12/3/2002	--	--
354L	2354+00	60' LT	5.0	--	GNE ⁽³⁾	--	12/4/2002	--	--
354R	2354+00	60' RT	5.0	--	GNE ⁽³⁾	--	12/3/2002	--	--
355L	2355+00	60' LT	5.0	--	GNE ⁽³⁾	--	12/4/2002	--	--

Table 2
Summary of Seasonal High Groundwater Table Estimates For Roadway
Orlando South Ultimate Interchange at SR 528 and SR 91 (Florida's Turnpike)
Orange County, Florida
FPN: 438547-1-32-01
Tierra Project No.: 5511-17-004

Boring Number	Boring Location		Boring Depth ⁽¹⁾ (feet)	Ground Surface Elevation NAVD88 (feet)	Measured GWT		Date Groundwater Table Recorded	Estimated SHGWT ⁽⁶⁾	
	Station	Offset			Depth Below Ground Surface (feet)	Elevation NAVD88 (feet)		Depth Below Ground Surface (feet)	Elevation NAVD88 (feet)
355R	2355+00	12' RT	5.0	--	GNE ⁽³⁾	--	10/30/2002	--	--
P2-355R	2355+00	147' RT	10.0	--	0.2	--	9/17/2003	0.2	--
TH-355R	2355+00	128' RT	30.0	92.3	ABG ⁽⁵⁾	> 92.3	10/7/2003	ABG ⁽⁷⁾	> 92.3
356R	2356+00	60' RT	5.0	--	GNE ⁽³⁾	--	12/3/2002	--	--
356R2	2356+00	200' RT	5.0	--	3.6	--	8/13/2003	2.0	--
356L	2356+00	12' LT	20.0	--	GNE ⁽³⁾	--	12/10/2002	--	--
357L	2357+00	60' LT	5.0	--	GNE ⁽³⁾	--	12/4/2002	--	--
357R	2357+00	60' RT	5.0	--	GNE ⁽³⁾	--	12/3/2002	--	--
358L	2358+00	60' LT	5.0	--	GNE ⁽³⁾	--	12/5/2002	--	--
358R	2358+00	12' RT	5.0	--	GNE ⁽³⁾	--	10/30/2002	--	--
TH-358	2358+00	C/L	50.0	117.3	GNA ⁽⁴⁾	--	8/26/2003	--	--
359L	2359+00	12' LT	5.0	--	GNE ⁽³⁾	--	10/30/2002	4.5	--
359R	2359+00	60' RT	5.0	--	GNE ⁽³⁾	--	12/3/2002	4.5	--
362L	2362+00	12' LT	5.0	--	GNE ⁽³⁾	--	10/30/2002	--	--
362R	2362+00	60' RT	5.0	--	GNE ⁽³⁾	--	12/3/2002	--	--
363L	2363+00	60' LT	5.0	--	GNE ⁽³⁾	--	12/5/2002	--	--
363R	2363+00	60' RT	5.0	--	GNE ⁽³⁾	--	12/3/2002	--	--
TH-363	2363+00	C/L	50.0	117.6	GNA ⁽⁴⁾	--	8/25/2003	--	--
364L	2364+00	60' LT	5.0	--	GNE ⁽³⁾	--	12/5/2002	--	--
364R	2364+00	12' RT	5.0	--	GNE ⁽³⁾	--	10/30/2002	--	--
P2A-364R	2364+00	160' RT	10.0	--	4.7	--	9/17/2003	3.5	--
365L	2365+00	12' LT	5.0	--	GNE ⁽³⁾	--	10/30/2002	--	--
365R	2365+00	60' RT	5.0	--	GNE ⁽³⁾	--	12/3/2002	--	--
TH-365R	2365+00	128' RT	40.0	91.8	3.0	88.8	9/30/2003	3.0	88.8
366R	2366+00	60' RT	5.0	--	GNE ⁽³⁾	--	12/3/2002	--	--
367L	2367+00	60' LT	5.0	--	GNE ⁽³⁾	--	12/5/2002	--	--
367R	2367+00	12' RT	5.0	--	GNE ⁽³⁾	--	10/30/2002	--	--

Table 2
Summary of Seasonal High Groundwater Table Estimates For Roadway
Orlando South Ultimate Interchange at SR 528 and SR 91 (Florida's Turnpike)
Orange County, Florida
FPN: 438547-1-32-01
Tierra Project No.: 5511-17-004

Boring Number	Boring Location		Boring Depth ⁽¹⁾ (feet)	Ground Surface Elevation NAVD88 (feet)	Measured GWT		Date Groundwater Table Recorded	Estimated SHGWT ⁽⁶⁾	
	Station	Offset			Depth Below Ground Surface (feet)	Elevation NAVD88 (feet)		Depth Below Ground Surface (feet)	Elevation NAVD88 (feet)
P2A-367R	2367+00	136' RT	10.0	--	2.3	--	9/17/2003	2.0	--
368L	2368+00	12' LT	5.0	--	4.3	--	10/30/2002	--	--
368R	2368+00	60' RT	5.0	--	GNE ⁽³⁾	--	12/3/2002	--	--
TH-368	2368+00	C/L	30.0	108.2	GNA ⁽⁴⁾	--	8/27/2003	--	--
369L	2369+00	60' LT	5.0	--	GNE ⁽³⁾	--	12/4/2002	--	--
369R	2369+00	60' RT	5.0	--	GNE ⁽³⁾	--	12/3/2002	--	--
370L	2370+00	60' LT	5.0	--	GNE ⁽³⁾	--	12/4/2002	--	--
370R	2370+00	12' RT	20.0	--	GNE ⁽³⁾	--	12/10/2002	--	--
371L	2371+00	12' LT	5.0	--	4.2	--	10/30/2002	--	--
371R	2371+00	60' RT	5.0	--	GNE ⁽³⁾	--	12/3/2002	--	--
P2A-371R	2371+00	145' RT	10.0	--	3.1	--	9/17/2003	2.4	--
TH-371L	2371+00	60' LT	20.0	104.0	3.2	100.8	9/30/2003	3.2	100.8
372L	2372+00	60' LT	5.0	--	GNE ⁽³⁾	--	12/4/2002	--	--
372R	2372+00	60' RT	5.0	--	GNE ⁽³⁾	--	12/3/2002	--	--
373L	2373+00	60' LT	5.0	--	GNE ⁽³⁾	--	12/4/2002	--	--
373R	2373+00	12' RT	5.0	--	GNE ⁽³⁾	--	10/30/2002	--	--
374L	2374+00	12' LT	5.0	--	4.0	--	10/30/2002	3.5	--
374R	2374+00	60' RT	5.0	--	GNE ⁽³⁾	--	12/3/2002	4.5	--
375L	2375+00	60' LT	5.0	--	5.0	--	12/4/2002	4.5	--
P2B-375R	2375+00	100' RT	10.0	--	1.5	--	9/10/2003	1.5	--
376L	2376+00	60' LT	5.0	--	4.2	--	12/4/2002	3.7	--
376R	2376+00	12' RT	5.0	--	GNE ⁽³⁾	--	12/4/2002	4.5	--
377L	2377+00	12' LT	5.0	--	GNE ⁽³⁾	--	10/30/2002	4.5	--
377R	2377+00	60' RT	5.0	--	GNE ⁽³⁾	--	12/3/2002	4.5	--
378L	2378+00	60' LT	5.0	--	4.0	--	12/4/2002	4.0	--
378R	2378+00	60' RT	5.0	--	2.7	--	12/3/2002	2.7	--
379L	2379+00	60' LT	5.0	--	3.9	--	12/4/2002	3.9	--

Table 2
Summary of Seasonal High Groundwater Table Estimates For Roadway
Orlando South Ultimate Interchange at SR 528 and SR 91 (Florida's Turnpike)
Orange County, Florida
FPN: 438547-1-32-01
Tierra Project No.: 5511-17-004

Boring Number	Boring Location		Boring Depth ⁽¹⁾ (feet)	Ground Surface Elevation NAVD88 (feet)	Measured GWT		Date Groundwater Table Recorded	Estimated SHGWT ⁽⁶⁾	
	Station	Offset			Depth Below Ground Surface (feet)	Elevation NAVD88 (feet)		Depth Below Ground Surface (feet)	Elevation NAVD88 (feet)
379R	2379+00	12' RT	5.0	--	GNE ⁽³⁾	--	10/30/2002	4.5	--
P4-379R	2379+00	97' RT	10.0	--	3.2	--	9/10/2003	3.2	--
380L	2380+00	12' LT	5.0	--	GNE ⁽³⁾	--	10/30/2002	4.5	--
380R	2380+00	60' RT	5.0	--	3.4	--	12/3/2002	3.4	--
381R	2381+00	60' RT	5.0	--	2.4	--	12/3/2002	2.4	--
381R2	2381+00	165' RT	5.0	--	3.3	--	9/10/2003	2.5	--
381L	2381+00	60' LT	20.0	--	3.7	--	12/17/2002	3.7	--
382L	2382+00	60' LT	5.0	--	3.4	--	12/4/2002	3.4	--
382R	2382+00	12' RT	5.0	--	4.5	--	10/30/2002	4.0	--
383L	2383+00	12' LT	5.0	--	3.7	--	10/30/2002	3.2	--
383R	2383+00	60' RT	5.0	--	2.2	--	12/3/2002	2.2	--
383R2	2383+00	160' RT	5.0	--	3.2	--	9/10/2003	2.0	--
384L	2384+00	60' LT	5.0	--	3.2	--	12/4/2002	3.2	--
384R	2384+00	60' RT	5.0	--	2.4	--	12/3/2002	2.4	--
P4-384R	2384+00	95' RT	10.0	--	1.8	--	9/10/2003	1.8	--
385L	2385+00	60' LT	5.0	--	3.1	--	12/4/2002	3.1	--
385R	2385+00	12' RT	5.0	--	2.0	--	10/30/2002	2.0	--
385R2	2385+00	160' RT	5.0	--	ABG ⁽⁵⁾	--	8/13/2003	ABG ⁽⁷⁾	--
386R	2386+00	60' RT	5.0	--	2.5	--	12/3/2002	2.5	--
386L	2386+00	12' LT	20.0	--	2.2	--	12/10/2002	2.2	--
387L	2387+00	60' LT	5.0	--	2.7	--	12/4/2002	2.7	--
387R	2387+00	60' RT	5.0	--	2.5	--	12/3/2002	2.5	--
387R2	2387+00	160' RT	5.0	--	ABG ⁽⁵⁾	--	8/13/2003	ABG ⁽⁷⁾	--
388L	2388+00	60' LT	5.0	--	3.7	--	12/4/2002	3.1	--
388R	2388+00	12' RT	5.0	--	3.7	--	10/30/2002	3.2	--
P4-388R	2388+00	95' RT	10.0	--	1.7	--	9/10/2003	1.7	--
389L	2389+00	12' LT	5.0	--	3.2	--	10/30/2002	2.7	--

Table 2
Summary of Seasonal High Groundwater Table Estimates For Roadway
Orlando South Ultimate Interchange at SR 528 and SR 91 (Florida's Turnpike)
Orange County, Florida
FPN: 438547-1-32-01
Tierra Project No.: 5511-17-004

Boring Number	Boring Location		Boring Depth ⁽¹⁾ (feet)	Ground Surface Elevation NAVD88 (feet)	Measured GWT		Date Groundwater Table Recorded	Estimated SHGWT ⁽⁶⁾	
	Station	Offset			Depth Below Ground Surface (feet)	Elevation NAVD88 (feet)		Depth Below Ground Surface (feet)	Elevation NAVD88 (feet)
389R	2389+00	60' RT	5.0	--	2.3	--	12/3/2002	2.3	--
390L	2390+00	60' LT	5.0	--	3.0	--	12/4/2002	3.0	--
390R	2390+00	60' RT	20.0	--	2.5	--	12/12/2002	2.5	--
391L	2391+00	60' LT	5.0	--	3.9	--	12/5/2002	3.9	--
391R	2391+00	12' RT	5.0	--	4.0	--	10/30/2002	3.5	--
391R2	2391+00	160' RT	5.0	--	2.8	--	8/13/2003	1.7	--
392L	2392+00	12' LT	5.0	--	3.7	--	10/30/2002	3.2	--
392R	2392+00	60' RT	5.0	--	2.2	--	12/3/2002	2.2	--
P4-392R	2392+00	105' RT	10.0	--	1.7	--	9/10/2003	1.7	--
393L	2393+00	60' LT	5.0	--	2.9	--	12/5/2002	2.9	--
393R	2393+00	60' RT	5.0	--	2.2	--	12/4/2002	2.2	--
394L	2394+00	60' LT	5.0	--	2.7	--	12/5/2002	2.7	--
394R	2394+00	12' RT	5.0	--	3.2	--	11/1/2002	2.7	--
395L	2395+00	12' LT	5.0	98.0	3.5	94.5	11/1/2002	3.0	95.0
395R	2395+00	60' RT	5.0	97.0	2.2	94.8	12/4/2002	2.2	94.8
P6-395R	2395+00	95' RT	10.0	96.0	2.0	94.0	9/10/2003	2.0	94.0
396L	2396+00	60' LT	20.0	97.5	2.8	94.7	12/17/2002	2.8	94.7
396R	2396+00	60' RT	5.0	97.2	2.2	95.0	12/4/2002	2.2	95.0
396R2	2396+00	160' RT	10.0	97.0	2.2	94.8	9/16/2003	2.2	94.8
397L	2397+00	60' LT	5.0	97.5	3.0	94.5	12/5/2002	2.5	95.0
397R	2397+00	12' RT	5.0	98.5	3.5	95.0	11/1/2002	3.0	95.5
398L	2398+00	12' LT	5.0	98.3	3.5	94.8	11/1/2002	3.0	95.3
398R	2398+00	60' RT	5.0	97.4	2.4	95.0	12/4/2002	2.4	95.0
399L	2399+00	60' LT	5.0	97.7	2.8	94.9	12/5/2002	2.8	94.9
399R	2399+00	60' RT	5.0	97.6	2.5	95.1	12/4/2002	2.5	95.1
P6-399R	2399+00	95' RT	10.0	96.0	1.2	94.8	9/13/2003	1.2	94.8
400L	2400+00	60' LT	5.0	97.5	2.5	95.0	12/5/2002	2.0	95.5

Table 2
Summary of Seasonal High Groundwater Table Estimates For Roadway
Orlando South Ultimate Interchange at SR 528 and SR 91 (Florida's Turnpike)
Orange County, Florida
FPN: 438547-1-32-01
Tierra Project No.: 5511-17-004

Boring Number	Boring Location		Boring Depth ⁽¹⁾ (feet)	Ground Surface Elevation NAVD88 (feet)	Measured GWT		Date Groundwater Table Recorded	Estimated SHGWT ⁽⁶⁾	
	Station	Offset			Depth Below Ground Surface (feet)	Elevation NAVD88 (feet)		Depth Below Ground Surface (feet)	Elevation NAVD88 (feet)
400R	2400+00	12' RT	20.0	98.5	2.9	95.6	12/10/2002	2.9	95.6
400R2	2400+00	160' RT	10.0	97.0	2.2	94.8	9/16/2003	2.2	94.8
401L	2401+00	12' LT	5.0	98.7	3.5	95.2	11/1/2002	3.0	95.7
401R	2401+00	60' RT	5.0	98.0	2.9	95.1	12/4/2002	2.5	95.5
402L	2402+00	60' LT	5.0	98.0	GNE ⁽³⁾	< 93	12/5/2002	4.5	93.5
402R	2402+00	60' RT	5.0	98.0	2.8	95.2	12/4/2002	2.8	95.2
402R2	2402+00	160' RT	5.0	97.7	4.5	93.2	8/13/2003	3.0	94.7
P8-402R	2402+00	100' RT	10.0	95.0	0.5	94.5	9/16/2003	0.5	94.5
403L	2403+00	60' LT	5.0	98.2	3.0	95.2	12/5/2002	2.5	95.7
403R	2403+00	12' RT	5.0	98.8	3.5	95.3	11/1/2002	3.0	95.8
404R2	2404+00	160' RT	10.0	98.0	0.2	97.8	9/10/2003	0.2	97.8
404L	2404+00	12' LT	5.0	99.2	3.5	95.7	11/1/2002	3.0	96.2
404R	2404+00	60' RT	5.0	98.0	3.0	95.0	12/4/2002	2.5	95.5
405R	2405+00	60' RT	20.0	98.0	2.9	95.1	12/12/2002	2.9	95.1
405L	2405+00	60' LT	5.0	98.0	3.2	94.8	12/5/2002	3.0	95.0
406L	2406+00	60' LT	5.0	98.4	3.2	95.2	12/5/2002	3.2	95.2
406R	2406+00	12' RT	5.0	99.5	GNE ⁽³⁾	< 94.5	11/1/2002	4.5	95.0
406R2	2406+00	160' RT	5.0	97.5	GNE ⁽³⁾	< 92.5	8/13/2003	3.0	94.5
P3-406L	2406+00	120' LT	10.0	95.8	1.5	94.3	9/15/2003	1.5	94.3
407L	2407+00	12' LT	5.0	99.5	5.0	94.5	11/1/2002	4.5	95.0
407R	2407+00	60' RT	5.0	98.5	2.8	95.7	12/4/2002	2.8	95.7
P8-407R	2407+00	100' RT	10.0	95.0	0.5	94.5	9/10/2003	0.5	94.5
408L	2408+00	60' LT	5.0	98.4	3.3	95.1	12/5/2002	3.0	95.4
408L2	2408+00	160' LT	5.0	97.0	2.8	94.2	8/19/2003	2.5	94.5
408R	2408+00	60' RT	5.0	98.4	3.5	94.9	12/4/2002	3.0	95.4
409L	2409+00	60' LT	5.0	98.0	3.5	94.5	12/5/2002	3.5	94.5
409R	2409+00	12' RT	5.0	99.0	GNE ⁽³⁾	< 94	11/1/2002	4.5	94.5

Table 2
Summary of Seasonal High Groundwater Table Estimates For Roadway
Orlando South Ultimate Interchange at SR 528 and SR 91 (Florida's Turnpike)
Orange County, Florida
FPN: 438547-1-32-01
Tierra Project No.: 5511-17-004

Boring Number	Boring Location		Boring Depth ⁽¹⁾ (feet)	Ground Surface Elevation NAVD88 (feet)	Measured GWT		Date Groundwater Table Recorded	Estimated SHGWT ⁽⁶⁾	
	Station	Offset			Depth Below Ground Surface (feet)	Elevation NAVD88 (feet)		Depth Below Ground Surface (feet)	Elevation NAVD88 (feet)
410L	2410+00	12' LT	5.0	99.3	GNE ⁽³⁾	< 94.3	11/1/2002	4.5	94.8
410R	2410+00	60' RT	5.0	98.5	GNE ⁽³⁾	< 93.5	12/4/2002	4.5	94.0
410R2	2410+00	160' RT	5.5	94.5	4.2	90.3	8/13/2003	3.0	91.5
411L	2411+00	60' LT	20.0	98.4	3.7	94.7	12/17/2002	3.2	95.2
411L2	2411+00	160' LT	10.0	98.0	3.0	95.0	9/17/2003	2.0	96.0
411R	2411+00	60' RT	5.0	98.4	4.0	94.4	12/4/2002	3.5	94.9
P3-411L	2411+00	100' LT	10.0	95.7	2.1	93.6	9/15/2003	2.1	93.6
412L	2412+00	60' LT	5.0	98.2	3.0	95.2	12/5/2002	3.0	95.2
412R	2412+00	12' RT	5.0	99.2	GNE ⁽³⁾	< 94.2	11/6/2002	4.5	94.7
412R2	2412+00	160' RT	5.0	94.8	3.5	91.3	8/13/2003	2.0	92.8
P8-412R	2412+00	100' RT	10.0	96.2	2.0	94.2	9/10/2003	2.0	94.2
413L2	2413+00	160' LT	10.0	98.0	4.2	93.8	9/17/2003	4.2	93.8
413L	2413+00	12' LT	5.0	99.2	GNE ⁽³⁾	< 94.2	11/6/2002	4.5	94.7
413R	2413+00	60' RT	5.0	98.5	GNE ⁽³⁾	< 93.5	12/4/2002	4.5	94.0
414L	2414+00	60' LT	5.0	98.0	GNE ⁽³⁾	< 93	12/5/2002	4.5	93.5
414R	2414+00	60' RT	5.0	98.3	GNE ⁽³⁾	< 93.3	12/4/2002	4.5	93.8
415L	2415+00	60' LT	5.0	98.3	3.0	95.3	12/5/2002	3.0	95.3
415R	2415+00	12' RT	5.0	99.2	GNE ⁽³⁾	< 94.2	11/6/2002	4.5	94.7
415R2	2415+00	160' RT	5.0	95.2	4.0	91.2	8/13/2003	2.0	93.2
416L	2416+00	12' LT	20.0	99.2	4.5	94.7	12/10/2002	4.5	94.7
416L2	2416+00	165' LT	5.0	96.2	3.3	92.9	8/19/2003	2.3	93.9
416R	2416+00	60' RT	5.0	98.6	GNE ⁽³⁾	< 93.6	12/4/2002	4.5	94.1
P5-416L	2416+00	100' LT	10.0	95.5	3.1	92.4	9/12/2003	2.3	93.2
417L	2417+00	60' LT	5.0	98.4	3.2	95.2	12/5/2002	3.2	95.2
417R	2417+00	60' RT	5.0	98.4	4.2	94.2	12/4/2002	3.8	94.6
417R2	2417+00	160' RT	5.0	95.2	4.2	91.0	8/13/2003	3.0	92.2
418L	2418+00	60' LT	5.0	98.0	3.2	94.8	12/5/2002	3.2	94.8

Table 2
Summary of Seasonal High Groundwater Table Estimates For Roadway
Orlando South Ultimate Interchange at SR 528 and SR 91 (Florida's Turnpike)
Orange County, Florida
FPN: 438547-1-32-01
Tierra Project No.: 5511-17-004

Boring Number	Boring Location		Boring Depth ⁽¹⁾ (feet)	Ground Surface Elevation NAVD88 (feet)	Measured GWT		Date Groundwater Table Recorded	Estimated SHGWT ⁽⁶⁾	
	Station	Offset			Depth Below Ground Surface (feet)	Elevation NAVD88 (feet)		Depth Below Ground Surface (feet)	Elevation NAVD88 (feet)
418L2	2418+00	165' LT	5.0	95.8	3.5	92.3	8/19/2003	3.5	92.3
418R	2418+00	12' RT	5.0	99.5	GNE ⁽³⁾	< 94.5	11/6/2002	4.5	95.0
P5-418L	2418+00	100' LT	10.0	95.2	3.0	92.2	9/12/2003	2.5	92.7
419L	2419+00	12' LT	5.0	99.2	GNE ⁽³⁾	< 94.2	11/6/2002	5.0	94.2
419R	2419+00	60' RT	5.0	98.5	4.0	94.5	12/4/2002	4.0	94.5
420R	2420+00	60' RT	20.0	98.5	2.5	96.0	12/12/2002	2.5	96.0
420L	2420+00	60' LT	5.0	98.6	3.2	95.4	12/5/2002	3.2	95.4
420L2	2420+00	165' LT	5.0	96.0	5.0	91.0	8/15/2003	3.0	93.0
P5-420L	2420+00	91' LT	10.0	97.0	3.8	93.2	9/12/2003	3.0	94.0
421L	2421+00	60' LT	5.0	98.5	3.2	95.3	12/5/2002	3.2	95.3
421R	2421+00	12' RT	5.0	99.5	GNE ⁽³⁾	< 94.5	11/6/2002	4.5	95.0
421R2	2421+00	100' RT	5.0	96.3	1.0	95.3	8/13/2003	1.0	95.3
422L	2422+00	12' LT	5.0	99.5	GNE ⁽³⁾	< 94.5	11/6/2002	--	--
422R	2422+00	60' RT	5.0	98.5	GNE ⁽³⁾	< 93.5	12/4/2002	4.5	94.0
P10-422R	2422+00	120' RT	10.0	95.3	1.1	94.2	9/10/2003	1.1	94.2
423L	2423+00	60' LT	5.0	98.5	2.9	95.6	12/5/2002	2.9	95.6
423R	2423+00	60' RT	5.0	98.5	3.0	95.5	12/4/2002	3.0	95.5
424L	2424+00	60' LT	5.0	99.3	3.0	96.3	12/5/2002	3.0	96.3
424R	2424+00	12' RT	5.0	100.2	GNE ⁽³⁾	< 95.2	11/6/2002	4.5	95.7
424R2	2424+00	160' RT	5.0	97.2	2.0	95.2	8/13/2003	1.5	95.7
425L	2425+00	12' LT	5.0	99.5	4.6	94.9	11/6/2002	4.3	95.2
425L2	2425+00	160' LT	5.0	95.3	5.0	90.3	8/15/2003	3.5	91.8
425R	2425+00	60' RT	5.0	98.9	3.1	95.8	12/4/2002	3.1	95.8
P7-425L	2425+00	90' LT	10.0	99.0	3.2	95.8	9/12/2003	3.2	95.8
426L	2426+00	60' LT	20.0	98.2	3.5	94.7	12/17/2002	3.5	94.7
426R	2426+00	60' RT	5.0	98.5	3.0	95.5	12/4/2002	3.0	95.5
426R2	2426+00	160' RT	5.0	96.2	2.8	93.4	8/13/2003	1.8	94.4

Table 2
Summary of Seasonal High Groundwater Table Estimates For Roadway
Orlando South Ultimate Interchange at SR 528 and SR 91 (Florida's Turnpike)
Orange County, Florida
FPN: 438547-1-32-01
Tierra Project No.: 5511-17-004

Boring Number	Boring Location		Boring Depth ⁽¹⁾ (feet)	Ground Surface Elevation NAVD88 (feet)	Measured GWT		Date Groundwater Table Recorded	Estimated SHGWT ⁽⁶⁾	
	Station	Offset			Depth Below Ground Surface (feet)	Elevation NAVD88 (feet)		Depth Below Ground Surface (feet)	Elevation NAVD88 (feet)
P12-426R	2426+50	91' RT	10.0	94.0	0.3	93.7	9/11/2003	0.3	93.7
427L	2427+00	60' LT	5.0	97.8	3.2	94.6	12/5/2002	3.2	94.6
427L2	2427+00	160' LT	5.0	94.3	4.3	90.0	9/17/2003	3.5	90.8
427R	2427+00	12' RT	5.0	98.8	GNE ⁽³⁾	< 93.8	11/6/2002	4.5	94.3
P7-427L	2427+00	88' LT	10.0	96.3	2.0	94.3	9/12/2003	2.0	94.3
428L	2428+00	12' LT	5.0	98.4	GNE ⁽³⁾	< 93.4	11/6/2002	--	--
428R	2428+00	60' RT	5.0	97.4	GNE ⁽³⁾	< 92.4	11/6/2002	5.0	92.4
428R2	2428+00	160' RT	5.0	93.3	3.3	90.0	8/13/2003	2.5	90.8
429L	2429+00	60' LT	5.0	96.8	2.5	94.3	12/5/2002	2.5	94.3
429L2	2429+00	160' LT	5.0	93.0	3.0	90.0	8/15/2003	2.0	91.0
429R	2429+00	60' RT	5.0	97.0	3.5	93.5	12/4/2002	3.5	93.5
430L	2430+00	60' LT	5.0	96.7	2.5	94.2	12/5/2002	2.5	94.2
430R	2430+00	12' RT	5.0	98.2	GNE ⁽³⁾	< 93.2	11/6/2002	4.5	93.7
430R2	2430+00	160' RT	5.0	93.0	3.2	89.8	8/13/2003	2.0	91.0
P9-430L	2430+00	90' LT	10.0	92.7	1.5	91.2	9/12/2003	1.0	91.7
431L2	2431+00	160' LT	5.0	92.8	5.0	87.8	8/15/2003	3.5	89.3
431R	2431+00	60' RT	5.0	97.0	GNE ⁽³⁾	< 92	12/4/2002	5.0	92.0
P14-431R	2431+00	120' RT	10.0	91.0	0.4	90.6	9/11/2003	0.4	90.6
432L	2432+00	60' LT	5.0	97.0	GNE ⁽³⁾	< 92	12/5/2002	5.0	92.0
432R	2432+00	60' RT	5.0	97.2	GNE ⁽³⁾	< 92.2	12/4/2002	5.0	92.2
P9-432L	2432+00	85' LT	20.0	93.4	1.5	91.9	9/12/2003	1.5	91.9
433L	2433+00	60' LT	5.0	97.0	GNE ⁽³⁾	< 92	12/5/2002	5.0	92.0
433R2	2433+00	120' RT	5.0	89.5	0.0	89.5	8/13/2003	ABG ⁽⁷⁾	> 89.5
434L	2434+00	12' LT	5.0	98.8	GNE ⁽³⁾	< 93.8	12/2/2002	5.0	93.8
434L2	2434+00	165' LT	5.0	92.0	GNE ⁽³⁾	< 87	8/15/2003	3.5	88.5
434R	2434+00	60' RT	5.0	95.5	GNE ⁽³⁾	< 90.5	12/4/2002	5.0	90.5
P16-434R	2434+00	90' RT	10.0	90.5	0.8	89.7	9/11/2003	0.8	89.7

Table 2
Summary of Seasonal High Groundwater Table Estimates For Roadway
Orlando South Ultimate Interchange at SR 528 and SR 91 (Florida's Turnpike)
Orange County, Florida
FPN: 438547-1-32-01
Tierra Project No.: 5511-17-004

Boring Number	Boring Location		Boring Depth ⁽¹⁾ (feet)	Ground Surface Elevation NAVD88 (feet)	Measured GWT		Date Groundwater Table Recorded	Estimated SHGWT ⁽⁶⁾	
	Station	Offset			Depth Below Ground Surface (feet)	Elevation NAVD88 (feet)		Depth Below Ground Surface (feet)	Elevation NAVD88 (feet)
435R	2435+00	60' RT	20.0	95.3	2.2	93.1	12/12/2002	2.2	93.1
435L	2435+00	60' LT	5.0	94.8	GNE ⁽³⁾	< 89.8	12/5/2002	4.5	90.3
P11-435L	2435+00	87' LT	15.0	91.0	1.8	89.2	9/12/2003	1.8	89.2
436L	2436+00	60' LT	5.0	94.5	GNE ⁽³⁾	< 89.5	12/5/2002	--	--
436L2	2436+00	170' LT	5.0	92.2	GNE ⁽³⁾	< 87.2	8/15/2003	4.0	88.2
436R	2436+00	12' RT	5.0	96.3	GNE ⁽³⁾	< 91.3	11/6/2002	4.5	91.8
P16-436R	2436+00	100' RT	10.0	93.3	1.2	92.1	9/11/2003	1.2	92.1
437L	2437+00	12' LT	5.0	96.0	GNE ⁽³⁾	< 91	11/6/2002	--	--
437R	2437+00	60' RT	5.0	95.0	GNE ⁽³⁾	< 90	12/4/2002	5.0	90.0
437R2	2437+00	150' RT	5.0	88.5	2.2	86.3	9/11/2003	1.0	87.5
438L	2438+00	60' LT	5.0	94.3	3.4	90.9	12/5/2002	3.4	90.9
438R	2438+00	60' RT	5.0	94.5	3.0	91.5	12/4/2002	3.0	91.5
P13-438L	2438+00	94' LT	15.0	90.5	1.4	89.1	9/12/2003	1.4	89.1
439L	2439+00	60' LT	5.0	94.0	3.2	90.8	12/5/2002	3.2	90.8
439R	2439+00	12' RT	5.0	95.5	GNE ⁽³⁾	< 90.5	11/6/2002	4.5	91.0
P18-439R	2439+00	80' RT	15.0	91.0	0.8	90.2	9/11/2003	0.8	90.2
440L	2440+00	12' LT	5.0	95.3	GNE ⁽³⁾	< 90.3	11/6/2002	--	--
440R	2440+00	60' RT	5.0	93.7	GNE ⁽³⁾	< 88.7	12/4/2002	4.5	89.2
441L	2441+00	60' LT	20.0	93.2	3.3	89.9	12/17/2002	3.3	89.9
441R	2441+00	60' RT	5.0	93.4	3.5	89.9	12/4/2002	3.5	89.9
442L	2442+00	60' LT	5.0	92.7	GNE ⁽³⁾	< 87.7	12/5/2002	4.5	88.2
442R	2442+00	12' RT	5.0	94.5	GNE ⁽³⁾	< 89.5	11/6/2002	--	--
443L	2443+00	12' LT	5.0	94.0	GNE ⁽³⁾	< 89	11/6/2002	4.6	89.4
443R	2443+00	60' RT	5.0	92.7	3.5	89.2	12/4/2002	3.5	89.2
444L	2444+00	60' LT	5.0	92.0	2.8	89.2	12/4/2002	2.8	89.2
444R	2444+00	60' RT	5.0	92.3	2.8	89.5	12/4/2002	2.8	89.5
445L	2445+00	60' LT	5.0	91.5	2.5	89.0	12/4/2002	2.0	89.5

Table 2
Summary of Seasonal High Groundwater Table Estimates For Roadway
Orlando South Ultimate Interchange at SR 528 and SR 91 (Florida's Turnpike)
Orange County, Florida
FPN: 438547-1-32-01
Tierra Project No.: 5511-17-004

Boring Number	Boring Location		Boring Depth ⁽¹⁾ (feet)	Ground Surface Elevation NAVD88 (feet)	Measured GWT		Date Groundwater Table Recorded	Estimated SHGWT ⁽⁶⁾	
	Station	Offset			Depth Below Ground Surface (feet)	Elevation NAVD88 (feet)		Depth Below Ground Surface (feet)	Elevation NAVD88 (feet)
445R	2445+00	12' RT	5.0	93.2	4.2	89.0	11/6/2002	3.6	89.6
446L	2446+00	12' LT	20.0	93.0	2.8	90.2	12/11/2002	2.8	90.2
446R	2446+00	60' RT	5.0	91.8	3.0	88.8	12/3/2002	2.5	89.3
447L	2447+00	60' LT	5.0	91.0	3.0	88.0	12/4/2002	2.5	88.5
447R	2447+00	60' RT	5.0	91.5	2.5	89.0	12/3/2002	2.5	89.0
448L	2448+00	60' LT	5.0	91.0	3.0	88.0	12/4/2002	2.5	88.5
448R	2448+00	12' RT	5.0	92.2	3.2	89.0	11/18/2002	3.0	89.2
449L	2449+00	12' LT	5.0	91.7	3.5	88.2	11/18/2002	3.0	88.7
449R	2449+00	60' RT	5.0	91.0	2.0	89.0	12/3/2002	2.0	89.0
449R2	2449+00	110' RT	5.0	89.0	2.1	86.9	9/30/2003	2.0	87.0
450L	2450+00	60' LT	5.0	91.0	2.8	88.2	12/4/2002	2.8	88.2
451L	2451+00	60' LT	3.0	91.2	3.0	88.2	12/4/2002	3.0	88.2
451R	2451+00	12' RT	5.0	91.7	3.8	87.9	1/18/2002	3.0	88.7
452L	2452+00	12' LT	5.0	91.3	GNE ⁽³⁾	< 86.3	11/18/2002	3.5	87.8
452R	2452+00	60' RT	5.0	91.2	2.0	89.2	12/3/2002	2.0	89.2
453L	2453+00	60' LT	5.0	90.0	3.0	87.0	12/4/2002	3.0	87.0
453R	2453+00	60' RT	5.0	91.2	2.5	88.7	12/2/2002	2.5	88.7
454L	2454+00	60' LT	5.0	88.6	5.0	83.6	12/4/2002	3.5	85.1
454R	2454+00	12' RT	5.0	91.0	GNE ⁽³⁾	< 86	11/18/2002	4.5	86.5
P15-454L	2454+00	88' LT	10.0	86.7	1.1	85.6	9/12/2003	1.1	85.6
455L	2455+00	12' LT	5.0	91.0	4.2	86.8	11/18/2002	3.6	87.4
455R	2455+00	60' RT	5.0	90.9	3.5	87.4	12/5/2002	3.5	87.4
456L	2456+00	60' LT	20.0	88.3	2.5	85.8	12/17/2002	2.5	85.8
456R	2456+00	60' RT	5.0	91.0	3.8	87.2	12/5/2002	3.8	87.2
457L	2457+00	60' LT	5.0	89.5	4.3	85.2	12/4/2002	4.3	85.2
457R	2457+00	12' RT	5.0	90.3	GNE ⁽³⁾	< 85.3	11/18/2002	4.5	85.8
458L	2458+00	12' LT	5.0	90.3	4.2	86.1	11/18/2002	3.8	86.5

Table 2
Summary of Seasonal High Groundwater Table Estimates For Roadway
Orlando South Ultimate Interchange at SR 528 and SR 91 (Florida's Turnpike)
Orange County, Florida
FPN: 438547-1-32-01
Tierra Project No.: 5511-17-004

Boring Number	Boring Location		Boring Depth ⁽¹⁾ (feet)	Ground Surface Elevation NAVD88 (feet)	Measured GWT		Date Groundwater Table Recorded	Estimated SHGWT ⁽⁶⁾	
	Station	Offset			Depth Below Ground Surface (feet)	Elevation NAVD88 (feet)		Depth Below Ground Surface (feet)	Elevation NAVD88 (feet)
458R	2458+00	60' RT	5.0	90.5	3.4	87.1	12/5/2002	3.4	87.1
P15-458L	2458+00	90' LT	10.0	86.3	1.1	85.2	9/12/2003	1.1	85.2
459L	2459+00	60' LT	5.0	89.3	4.2	85.1	12/4/2002	3.8	85.5
459R	2459+00	60' RT	5.0	90.3	GNE ⁽³⁾	< 85.3	12/5/2002	4.5	85.8
460R	2460+00	12' RT	20.0	89.0	2.5	86.5	12/11/2002	2.2	86.8
460L	2460+00	60' LT	5.0	90.3	4.2	86.1	12/4/2002	3.8	86.5
461L	2461+00	12' LT	5.0	90.3	4.1	86.2	11/18/2002	3.8	86.5
461R	2461+00	60' RT	5.0	90.0	2.8	87.2	12/5/2002	2.8	87.2
462L	2462+00	60' LT	5.0	88.8	4.2	84.6	12/4/2002	3.8	85.0
462R	2462+00	60' RT	5.0	89.5	GNE ⁽³⁾	< 84.5	12/5/2002	4.5	85.0
463L	2463+00	60' LT	5.0	88.3	3.6	84.7	12/4/2002	3.2	85.1
463R	2463+00	12' RT	5.0	90.0	4.6	85.4	11/18/2002	4.2	85.8
464L	2464+00	12' LT	5.0	89.3	3.5	85.8	11/18/2002	3.0	86.3
464R	2464+00	60' RT	5.0	89.5	2.5	87.0	12/5/2002	2.5	87.0
465R	2465+00	60' RT	20.0	88.2	3.0	85.2	12/12/2002	3.0	85.2
465L	2465+00	60' LT	5.0	89.5	4.0	85.5	12/4/2002	3.5	86.0
466L	2466+00	60' LT	5.0	88.0	3.8	84.2	12/4/2002	3.1	84.9
466R	2466+00	12' RT	5.0	89.8	GNE ⁽³⁾	< 84.8	11/18/2002	4.5	85.3
466R2	2466+00	70' RT	5.0	87.8	0.8	87.0	8/15/2003	0.8	87.0
467L	2467+00	12' LT	5.0	89.2	GNE ⁽³⁾	< 84.2	11/18/2002	4.5	84.7
467R	2467+00	60' RT	5.0	89.0	2.2	86.8	12/5/2002	2.2	86.8
468L	2468+00	60' LT	5.0	87.8	4.9	82.9	12/4/2002	4.3	83.5
468R	2468+00	60' RT	5.0	88.8	GNE ⁽³⁾	< 83.8	12/5/2002	4.5	84.3
469L	2469+00	60' LT	5.0	87.5	3.3	84.2	12/4/2002	3.3	84.2
469R	2469+00	12' RT	5.0	89.0	GNE ⁽³⁾	< 84	11/18/2002	4.5	84.5
470L	2470+00	12' LT	5.0	89.2	4.5	84.7	11/18/2002	4.0	85.2
470R	2470+00	60' RT	5.0	88.5	2.5	86.0	12/5/2002	2.5	86.0

Table 2
Summary of Seasonal High Groundwater Table Estimates For Roadway
Orlando South Ultimate Interchange at SR 528 and SR 91 (Florida's Turnpike)
Orange County, Florida
FPN: 438547-1-32-01
Tierra Project No.: 5511-17-004

Boring Number	Boring Location		Boring Depth ⁽¹⁾ (feet)	Ground Surface Elevation NAVD88 (feet)	Measured GWT		Date Groundwater Table Recorded	Estimated SHGWT ⁽⁶⁾	
	Station	Offset			Depth Below Ground Surface (feet)	Elevation NAVD88 (feet)		Depth Below Ground Surface (feet)	Elevation NAVD88 (feet)
471L	2471+00	60' LT	20.0	87.0	2.6	84.4	12/17/2002	2.2	84.8
471R	2471+00	60' RT	5.5	87.0	1.5	85.5	12/5/2002	1.5	85.5
472L	2472+00	60' LT	5.0	87.5	4.2	83.3	12/4/2002	3.6	83.9
472R	2472+00	12' RT	5.0	89.0	GNE ⁽³⁾	< 84	11/18/2002	4.5	84.5
473L	2473+00	12' LT	5.0	89.0	GNE ⁽³⁾	< 84	11/18/2002	4.5	84.5
473R	2473+00	60' RT	5.0	87.3	2.0	85.3	12/5/2002	2.0	85.3
474L	2474+00	60' LT	5.0	87.5	4.5	83.0	12/4/2002	4.0	83.5
474R	2474+00	60' RT	5.0	87.8	2.5	85.3	12/5/2002	2.5	85.3
475L	2475+00	60' LT	5.0	88.0	4.5	83.5	12/4/2002	4.0	84.0
475R	2475+00	12' RT	5.0	88.5	GNE ⁽³⁾	< 83.5	11/18/2002	4.5	84.0
476L	2476+00	12' LT	20.0	89.0	2.8	86.2	12/11/2002	2.8	86.2
476R	2476+00	60' RT	5.0	87.7	2.0	85.7	12/4/2002	2.0	85.7
477L	2477+00	60' LT	5.0	87.8	4.5	83.3	12/4/2002	4.0	83.8
477R	2477+00	60' RT	5.0	87.8	2.5	85.3	12/4/2002	2.5	85.3
478L	2478+00	60' LT	5.0	88.0	4.5	83.5	12/4/2002	4.0	84.0
479R	2479+00	60' RT	5.0	87.7	2.5	85.2	12/4/2002	2.5	85.2
480R	2480+00	60' RT	20.0	87.5	2.0	85.5	12/12/2002	2.0	85.5
480L	2480+00	60' LT	5.0	87.7	4.2	83.5	12/4/2002	3.8	83.9
481L	2481+00	60' LT	5.0	88.0	4.5	83.5	12/4/2002	4.0	84.0
481R2	2481+00	95' RT	5.0	85.7	1.0	84.7	8/15/2003	1.0	84.7
482L	2482+00	12' LT	5.0	89.0	GNE ⁽³⁾	< 84	11/18/2002	4.5	84.5
482R	2482+00	60' RT	6.5	87.7	2.5	85.2	12/4/2002	2.5	85.2
483L	2483+00	60' LT	5.0	87.7	3.6	84.1	12/4/2002	3.6	84.1
483R	2483+00	60' RT	5.0	87.7	3.2	84.5	12/4/2002	3.2	84.5
484L	2484+00	60' LT	5.0	87.7	4.0	83.7	12/4/2002	3.5	84.2
484R	2484+00	12' RT	5.0	88.8	3.5	85.3	11/18/2002	3.5	85.3
485L	2485+00	12' LT	5.0	89.0	4.5	84.5	11/18/2002	4.0	85.0

Table 2
Summary of Seasonal High Groundwater Table Estimates For Roadway
Orlando South Ultimate Interchange at SR 528 and SR 91 (Florida's Turnpike)
Orange County, Florida
FPN: 438547-1-32-01
Tierra Project No.: 5511-17-004

Boring Number	Boring Location		Boring Depth ⁽¹⁾ (feet)	Ground Surface Elevation NAVD88 (feet)	Measured GWT		Date Groundwater Table Recorded	Estimated SHGWT ⁽⁶⁾	
	Station	Offset			Depth Below Ground Surface (feet)	Elevation NAVD88 (feet)		Depth Below Ground Surface (feet)	Elevation NAVD88 (feet)
485R	2485+00	60' RT	5.0	87.5	3.0	84.5	12/4/2002	3.0	84.5
486L	2486+00	60' LT	20.0	87.3	2.5	84.8	12/17/2002	2.5	84.8
486R	2486+00	60' RT	5.0	87.3	2.5	84.8	12/4/2002	2.5	84.8
487L	2487+00	60' LT	5.0	87.5	3.8	83.7	12/4/2002	3.2	84.3
487R	2487+00	12' RT	5.0	89.0	GNE ⁽³⁾	< 84	11/18/2002	4.5	84.5
488L	2488+00	12' LT	5.0	89.0	3.5	85.5	11/18/2002	3.0	86.0
488R	2488+00	60' RT	5.0	87.3	1.5	85.8	12/4/2002	1.5	85.8
489L	2489+00	60' LT	5.0	87.3	4.2	83.1	12/4/2002	3.6	83.7
489R	2489+00	60' RT	6.5	87.3	2.0	85.3	12/4/2002	2.0	85.3
490R	2490+00	12' RT	20.0	89.0	2.2	86.8	12/11/2002	2.2	86.8
490L	2490+00	60' LT	5.0	87.3	4.6	82.7	12/4/2002	4.1	83.2
491L	2491+00	12' LT	5.0	89.0	GNE ⁽³⁾	< 84	11/18/2002	4.5	84.5
491R	2491+00	60' RT	5.0	87.3	2.5	84.8	12/4/2002	2.5	84.8
492L	2492+00	60' LT	5.0	87.4	4.2	83.2	12/4/2002	3.8	83.6
492R	2492+00	60' RT	5.0	87.2	2.5	84.7	12/4/2002	2.5	84.7
493L	2493+00	60' LT	5.0	87.5	3.5	84.0	12/4/2002	3.5	84.0
493R	2493+00	12' RT	5.0	89.0	GNE ⁽³⁾	< 84	11/18/2002	4.5	84.5
494L	2494+00	12' LT	5.0	88.5	GNE ⁽³⁾	< 83.5	11/18/2002	4.5	84.0
494R	2494+00	60' RT	5.0	87.0	2.5	84.5	12/4/2002	2.5	84.5
495R	2495+00	60' RT	20.0	87.0	2.1	84.9	12/16/2002	2.1	84.9
495L	2495+00	60' LT	5.0	87.5	3.5	84.0	12/4/2002	3.0	84.5
496L	2496+00	60' LT	5.0	87.8	3.8	84.0	12/4/2002	3.8	84.0
496R	2496+00	12' RT	5.0	89.0	GNE ⁽³⁾	< 84	11/18/2002	4.5	84.5
TH-496L	2496+00	72' LT	20.0	85.5	3.1	82.4	9/12/2003	3.1	82.4
497L	2497+00	12' LT	5.0	89.0	GNE ⁽³⁾	< 84	11/18/2002	4.5	84.5
497R	2497+00	60' RT	5.0	87.8	2.0	85.8	12/4/2002	2.0	85.8
498L	2498+00	60' LT	5.0	88.5	4.5	84.0	12/4/2002	4.0	84.5

Table 2
Summary of Seasonal High Groundwater Table Estimates For Roadway
Orlando South Ultimate Interchange at SR 528 and SR 91 (Florida's Turnpike)
Orange County, Florida
FPN: 438547-1-32-01
Tierra Project No.: 5511-17-004

Boring Number	Boring Location		Boring Depth ⁽¹⁾ (feet)	Ground Surface Elevation NAVD88 (feet)	Measured GWT		Date Groundwater Table Recorded	Estimated SHGWT ⁽⁶⁾	
	Station	Offset			Depth Below Ground Surface (feet)	Elevation NAVD88 (feet)		Depth Below Ground Surface (feet)	Elevation NAVD88 (feet)
498R	2498+00	60' RT	5.0	88.3	3.0	85.3	12/4/2002	3.0	85.3
TH-498R	2498+00	80' RT	20.0	84.8	0.2	84.6	9/11/2003	0.2	84.6
499L	2499+00	60' LT	5.0	89.3	GNE ⁽³⁾	< 84.3	12/4/2002	4.5	84.8
499R	2499+00	122' RT	5.0	91.0	GNE ⁽³⁾	< 86	11/18/2002	4.5	86.5
TH-499	2499+50	0' RT	20.0	91.2	GNA ⁽⁴⁾	GNA ⁽⁴⁾	8/27/2003	--	--
500L	2500+00	12' LT	5.0	91.8	GNE ⁽³⁾	< 86.8	11/18/2002	4.5	87.3
500R	2500+00	60' RT	5.0	90.8	4.0	86.8	12/4/2002	3.5	87.3
504L	2504+00	60' LT	5.0	89.7	GNE ⁽³⁾	< 84.7	12/4/2025	4.5	85.2
504R	2504+00	60' RT	5.0	89.7	GNE ⁽³⁾	< 84.7	12/4/2002	4.5	85.2
TH-504	2504+00	0' RT	20.0	90.7	GNA ⁽⁴⁾	GNA ⁽⁴⁾	8/27/2003	--	--
505L	2505+00	60' LT	5.0	89.0	4.2	84.8	12/3/2002	3.8	85.2
505R	2505+00	12' RT	5.0	90.5	2.5	88.0	12/2/2002	2.5	88.0
506L	2506+00	12' LT	20.0	89.7	1.6	88.1	12/11/2002	1.6	88.1
506R	2506+00	60' RT	5.0	88.7	GNE ⁽³⁾	< 83.7	12/4/2002	4.5	84.2
TH-506L	2506+00	80' LT	20.0	84.0	1.5	82.5	9/12/2003	1.5	82.5
507L	2507+00	60' LT	5.0	87.8	3.6	84.2	12/3/2002	3.6	84.2
507R	2507+00	60' RT	5.0	88.2	3.2	85.0	12/4/2002	3.2	85.0
508L	2508+00	60' LT	5.0	87.5	3.0	84.5	12/3/2002	3.0	84.5
508R	2508+00	12' RT	5.0	89.0	4.5	84.5	12/2/2002	4.5	84.5
TH-508R	2508+00	80' RT	20.0	84.0	0.8	83.2	9/11/2003	0.8	83.2
509L	2509+00	12' LT	5.0	88.7	3.6	85.1	12/2/2002	3.6	85.1
509R	2509+00	60' RT	5.0	87.5	3.1	84.4	12/4/2002	3.1	84.4
510R	2510+00	60' RT	20.0	87.5	1.6	85.9	12/16/2002	1.6	85.9
510L	2510+00	60' LT	5.0	87.2	3.0	84.2	12/3/2002	2.5	84.7
511L	2511+00	60' LT	5.0	87.3	3.5	83.8	12/3/2002	3.5	83.8
511R	2511+00	12' RT	5.0	88.5	GNE ⁽³⁾	< 83.5	12/2/2002	4.5	84.0
512L	2512+00	12' LT	5.0	88.5	4.2	84.3	12/2/2002	4.2	84.3

Table 2
Summary of Seasonal High Groundwater Table Estimates For Roadway
Orlando South Ultimate Interchange at SR 528 and SR 91 (Florida's Turnpike)
Orange County, Florida
FPN: 438547-1-32-01
Tierra Project No.: 5511-17-004

Boring Number	Boring Location		Boring Depth ⁽¹⁾ (feet)	Ground Surface Elevation NAVD88 (feet)	Measured GWT		Date Groundwater Table Recorded	Estimated SHGWT ⁽⁶⁾	
	Station	Offset			Depth Below Ground Surface (feet)	Elevation NAVD88 (feet)		Depth Below Ground Surface (feet)	Elevation NAVD88 (feet)
512R	2512+00	60' RT	5.0	87.5	4.0	83.5	12/4/2002	3.5	84.0
513L	2513+00	60' LT	5.0	87.3	3.2	84.1	12/3/2002	3.2	84.1
513R	2513+00	60' RT	5.0	87.3	3.8	83.5	12/4/2002	3.4	83.9
514L	2514+00	60' LT	5.0	87.7	3.6	84.1	12/3/2002	3.1	84.6
514R	2514+00	12' RT	5.0	88.8	3.9	84.9	12/2/2002	3.9	84.9
515L	2515+00	12' LT	5.0	89.3	4.8	84.5	12/2/2002	4.8	84.5
515R	2515+00	60' RT	5.0	88.3	4.2	84.1	12/4/2002	3.6	84.7
516L	2516+00	60' LT	20.0	89.0	3.0	86.0	12/17/2002	3.0	86.0
516R	2516+00	60' RT	5.0	89.0	4.5	84.5	12/4/2002	4.1	84.9
517L	2517+00	60' LT	5.0	89.3	5.0	84.3	12/3/2002	4.5	84.8
517R	2517+00	12' RT	5.0	90.3	GNE ⁽³⁾	< 85.3	12/2/2002	4.5	85.8
517R2	2517+00	140' RT	5.0	84.7	0.0	84.7	8/15/2003	ABG ⁽⁷⁾	> 84.7
518L	2518+00	12' LT	5.0	91.0	GNE ⁽³⁾	< 86	12/2/2002	4.5	86.5
518R	2518+00	60' RT	5.0	90.0	GNE ⁽³⁾	< 85	12/4/2002	4.5	85.5
519L	2519+00	60' LT	5.0	90.3	GNE ⁽³⁾	< 85.3	12/3/2002	4.5	85.8
519R	2519+00	60' RT	5.0	90.0	GNE ⁽³⁾	< 85	12/4/2002	4.5	85.5
520R	2520+00	12' RT	20.0	91.7	3.6	88.1	12/11/2002	3.6	88.1
520L	2520+00	60' LT	5.0	90.8	GNE ⁽³⁾	< 85.8	12/3/2002	4.5	86.3
521L	2521+00	12' LT	5.0	92.3	GNE ⁽³⁾	< 87.3	12/2/2002	4.5	87.8
521R	2521+00	60' RT	5.0	91.3	GNE ⁽³⁾	< 86.3	12/4/2002	4.5	86.8
522L	2522+00	60' LT	5.0	91.7	GNE ⁽³⁾	< 86.7	12/3/2002	4.5	87.2
522R	2522+00	60' RT	5.0	91.8	GNE ⁽³⁾	< 86.8	12/4/2002	4.5	87.3
523L	2523+00	60' LT	5.0	92.3	GNE ⁽³⁾	< 87.3	12/3/2002	4.5	87.8
523R	2523+00	12' RT	5.0	93.5	GNE ⁽³⁾	< 88.5	12/2/2002	4.5	89.0
524L	2524+00	12' LT	5.0	93.7	GNE ⁽³⁾	< 88.7	12/2/2002	4.5	89.2
524R	2524+00	60' RT	5.0	93.0	GNE ⁽³⁾	< 88	12/4/2002	4.5	88.5
524R2	2524+00	150' RT	5.0	88.8	3.0	85.8	8/15/2003	2.0	86.8

Table 2
Summary of Seasonal High Groundwater Table Estimates For Roadway
Orlando South Ultimate Interchange at SR 528 and SR 91 (Florida's Turnpike)
Orange County, Florida
FPN: 438547-1-32-01
Tierra Project No.: 5511-17-004

Boring Number	Boring Location		Boring Depth ⁽¹⁾ (feet)	Ground Surface Elevation NAVD88 (feet)	Measured GWT		Date Groundwater Table Recorded	Estimated SHGWT ⁽⁶⁾	
	Station	Offset			Depth Below Ground Surface (feet)	Elevation NAVD88 (feet)		Depth Below Ground Surface (feet)	Elevation NAVD88 (feet)
525R	2525+00	60' RT	20.0	93.2	3.8	89.4	12/16/2002	3.8	89.4
525L	2525+00	60' LT	5.0	93.3	GNE ⁽³⁾	< 88.3	12/3/2002	4.5	88.8
P20-525R	2525+00	120' RT	10.0	88.7	0.4	88.3	9/11/2003	0.4	88.3
526L	2526+00	60' LT	5.0	93.2	GNE ⁽³⁾	< 88.2	12/3/2002	4.5	88.7
526R	2526+00	12' RT	5.0	94.2	GNE ⁽³⁾	< 89.2	12/2/2002	4.5	89.7
526R2	2526+00	160' RT	5.0	90.5	3.9	86.6	8/15/2003	3.0	87.5
527L	2527+00	12' LT	5.0	94.2	GNE ⁽³⁾	< 89.2	12/2/2002	4.5	89.7
527L2	2527+00	160' LT	7.0	89.7	2.8	86.9	8/19/2003	2.0	87.7
527R	2527+00	60' RT	5.0	93.7	GNE ⁽³⁾	< 88.7	12/4/2002	4.5	89.2
P21-527L	2527+00	100' LT	10.0	89.5	1.5	88.0	9/12/2003	1.5	88.0
528L	2528+00	60' LT	5.0	93.5	GNE ⁽³⁾	< 88.5	12/3/2002	4.5	89.0
528R	2528+00	60' RT	5.0	93.5	GNE ⁽³⁾	< 88.5	12/3/2002	4.5	89.0
528R2	2528+00	160' RT	5.0	90.7	3.5	87.2	8/15/2003	2.5	88.2
529L	2529+00	60' LT	5.0	93.7	GNE ⁽³⁾	< 88.7	12/3/2002	4.5	89.2
529L2	2529+00	160' LT	5.0	89.8	3.0	86.8	8/19/2003	2.0	87.8
529R	2529+00	12' RT	5.0	94.5	GNE ⁽³⁾	< 89.5	12/2/2002	4.5	90.0
P20-529R	2529+00	92' RT	10.0	91.3	0.4	90.9	9/11/2003	0.4	90.9
530L	2530+00	12' LT	5.0	94.5	GNE ⁽³⁾	< 89.5	12/2/2002	4.5	90.0
530R	2530+00	60' RT	5.0	93.7	GNE ⁽³⁾	< 88.7	12/4/2002	4.5	89.2
530R2	2530+00	160' RT	5.0	90.8	3.1	87.7	8/15/2003	2.5	88.3
P21-530L	2530+00	120' LT	10.0	89.0	1.2	87.8	9/12/2003	1.2	87.8
531L	2531+00	60' LT	20.0	93.5	2.6	90.9	12/16/2002	2.6	90.9
531L2	2531+00	160' LT	5.0	90.3	2.5	87.8	8/19/2003	1.5	88.8
531R	2531+00	60' RT	5.0	93.5	GNE ⁽³⁾	< 88.5	12/4/2002	4.5	89.0
532L	2532+00	60' LT	5.0	94.0	5.0	89.0	12/3/2002	4.5	89.5
532R	2532+00	12' RT	5.0	94.8	GNE ⁽³⁾	< 89.8	12/2/2002	4.5	90.3
532R2	2532+00	160' RT	5.0	91.0	4.0	87.0	8/15/2003	2.5	88.5

Table 2
Summary of Seasonal High Groundwater Table Estimates For Roadway
Orlando South Ultimate Interchange at SR 528 and SR 91 (Florida's Turnpike)
Orange County, Florida
FPN: 438547-1-32-01
Tierra Project No.: 5511-17-004

Boring Number	Boring Location		Boring Depth ⁽¹⁾ (feet)	Ground Surface Elevation NAVD88 (feet)	Measured GWT		Date Groundwater Table Recorded	Estimated SHGWT ⁽⁶⁾	
	Station	Offset			Depth Below Ground Surface (feet)	Elevation NAVD88 (feet)		Depth Below Ground Surface (feet)	Elevation NAVD88 (feet)
P22-532R	2532+00	100' RT	10.0	90.5	0.3	90.2	9/11/2003	0.3	90.2
533L	2533+00	12' LT	5.0	94.7	GNE ⁽³⁾	< 89.7	12/2/2002	4.5	90.2
533L2	2533+00	70' LT	5.0	92.2	4.0	88.2	8/19/2003	4.0	88.2
533R	2533+00	60' RT	5.0	94.0	GNE ⁽³⁾	< 89	12/4/2002	4.5	89.5
534L	2534+00	60' LT	5.0	94.2	5.0	89.2	12/3/2002	4.5	89.7
534R	2534+00	60' RT	5.0	94.2	GNE ⁽³⁾	< 89.2	12/4/2002	4.5	89.7
534R2	2534+00	160' RT	5.0	90.8	4.0	86.8	8/15/2003	2.5	88.3
P23-534L	2534+00	120' LT	10.0	89.8	1.0	88.8	9/12/2003	1.0	88.8
535L	2535+00	60' LT	5.0	94.2	GNE ⁽³⁾	< 89.2	12/3/2002	4.5	89.7
535L2	2535+00	160' LT	5.0	90.8	2.0	88.8	8/19/2003	1.5	89.3
535R	2535+00	12' RT	5.0	95.2	GNE ⁽³⁾	< 90.2	12/2/2002	4.5	90.7
536L	2536+00	12' LT	20.0	95.2	3.0	92.2	12/11/2002	3.0	92.2
536R	2536+00	60' RT	5.0	94.0	GNE ⁽³⁾	< 89	12/4/2002	3.5	90.5
P22-536R	2536+00	100' RT	10.0	90.5	0.1	90.4	9/11/2003	0.1	90.4
537L	2537+00	60' LT	5.0	94.3	4.5	89.8	12/3/2002	4.2	90.1
537R	2537+00	60' RT	5.0	94.3	GNE ⁽³⁾	< 89.3	12/4/2002	4.5	89.8
538L	2538+00	60' LT	5.0	94.3	5.0	89.3	12/3/2002	4.5	89.8
538R	2538+00	12' RT	5.0	95.7	GNE ⁽³⁾	< 90.7	12/2/2002	5.0	90.7
538R2	2538+00	160' RT	5.0	90.6	4.0	86.6	8/15/2003	2.0	88.6
P23-538L	2538+00	94' LT	10.0	91.2	1.3	89.9	9/12/2003	1.3	89.9
539L	2539+00	12' LT	5.0	95.7	GNE ⁽³⁾	< 90.7	12/2/2002	4.5	91.2
539L2	2539+00	160' LT	5.0	91.7	3.0	88.7	8/19/2003	2.5	89.2
539R	2539+00	60' RT	5.0	94.7	GNE ⁽³⁾	< 89.7	12/4/2002	4.5	90.2
540R	2540+00	60' RT	20.0	94.7	2.1	92.6	12/16/2002	2.1	92.6
540L	2540+00	60' LT	5.0	94.7	5.0	89.7	10/30/2002	4.5	90.2
P22-540R	2540+00	104' RT	10.0	97.0	0.2	96.8	9/11/2003	0.2	96.8
541L	2541+00	60' LT	5.0	94.8	GNE ⁽³⁾	< 89.8	10/30/2002	4.5	90.3

Table 2
Summary of Seasonal High Groundwater Table Estimates For Roadway
Orlando South Ultimate Interchange at SR 528 and SR 91 (Florida's Turnpike)
Orange County, Florida
FPN: 438547-1-32-01
Tierra Project No.: 5511-17-004

Boring Number	Boring Location		Boring Depth ⁽¹⁾ (feet)	Ground Surface Elevation NAVD88 (feet)	Measured GWT		Date Groundwater Table Recorded	Estimated SHGWT ⁽⁶⁾	
	Station	Offset			Depth Below Ground Surface (feet)	Elevation NAVD88 (feet)		Depth Below Ground Surface (feet)	Elevation NAVD88 (feet)
541R	2541+00	12' RT	5.0	95.8	GNE ⁽³⁾	< 90.8	12/2/2002	4.5	91.3
541R2	2541+00	160' RT	5.0	92.0	4.8	87.2	8/15/2003	2.5	89.5
542L	2542+00	12' LT	5.0	95.7	GNE ⁽³⁾	< 90.7	12/2/2002	4.5	91.2
542L2	2542+00	160' LT	5.0	91.8	2.0	89.8	8/19/2003	1.5	90.3
542R	2542+00	60' RT	5.0	94.7	GNE ⁽³⁾	< 89.7	12/3/2002	4.5	90.2
P25-542L	2542+00	100' LT	10.0	91.3	1.0	90.3	9/12/2003	1.0	90.3
543L	2543+00	60' LT	5.0	95.2	GNE ⁽³⁾	< 90.2	10/30/2002	4.5	90.7
543R	2543+00	60' RT	5.0	95.2	GNE ⁽³⁾	< 90.2	12/3/2002	4.5	90.7
544L	2544+00	60' LT	5.0	95.5	GNE ⁽³⁾	< 90.5	12/3/2002	4.5	91.0
544R	2544+00	12' RT	5.0	96.3	GNE ⁽³⁾	< 91.3	12/2/2002	4.5	91.8
544R2	2544+00	160' RT	5.0	91.0	5.0	86.0	8/15/2003	1.0	90.0
P24-544R	2544+00	100' RT	10.0	92.0	0.3	91.7	9/11/2003	0.3	91.7
545L	2545+00	12' LT	5.0	96.5	GNE ⁽³⁾	< 91.5	12/2/2002	5.0	91.5
545L2	2545+00	160' LT	5.0	92.3	4.5	87.8	8/19/2003	3.0	89.3
545R	2545+00	60' RT	5.0	95.3	4.2	91.1	12/3/2002	3.8	91.5
546L	2546+00	60' LT	20.0	96.2	3.0	93.2	12/16/2002	3.0	93.2
546R	2546+00	60' RT	5.0	95.2	3.5	91.7	12/4/2002	3.0	92.2
P27-546L	2546+00	120' LT	10.0	91.3	1.0	90.3	9/12/2003	1.0	90.3
B/L Ramp A (Borings Completed by Tierra)									
AB-301R	301+06	32' RT	8.0	88.2	5.5	82.7	5/2/2016	3.5	84.7
AB-302L	301+76	36' LT	5.5	86.3	2.3	84.0	5/3/2016	1.5	84.8
AB-303R	302+97	27' RT	7.0	86.9	4.0	82.9	5/3/2016	2.0	84.9
AB-304L	303+92	11' LT	7.0	87.4	3.5	83.9	5/3/2016	2.5	84.9
AB-305R	305+00	35' RT	8.0	87.8	5.3	82.5	5/3/2016	3.0	84.8
AB-306L	305+96	3' LT	6.5	83.8	4.8	79.0	5/6/2016	ABG ⁽⁷⁾	> 83.8
AB-307L	307+18	4' LT	6.0	83.4	3.0	80.4	5/6/2016	ABG ⁽⁷⁾	> 83.4

Table 2
Summary of Seasonal High Groundwater Table Estimates For Roadway
Orlando South Ultimate Interchange at SR 528 and SR 91 (Florida's Turnpike)
Orange County, Florida
FPN: 438547-1-32-01
Tierra Project No.: 5511-17-004

Boring Number	Boring Location		Boring Depth ⁽¹⁾ (feet)	Ground Surface Elevation NAVD88 (feet)	Measured GWT		Date Groundwater Table Recorded	Estimated SHGWT ⁽⁶⁾	
	Station	Offset			Depth Below Ground Surface (feet)	Elevation NAVD88 (feet)		Depth Below Ground Surface (feet)	Elevation NAVD88 (feet)
AB-308L	308+05	14' LT	3.0	83.4	0.0	83.4	5/6/2016	ABG ⁽⁷⁾	> 83.4
AB-309R	308+96	4' RT	6.0	87.9	GNE ⁽³⁾	< 81.9	5/6/2016	3.5	84.4
AB-310L	310+04	13' LT	10.0	87.4	9.8	77.6	5/6/2016	3.5	83.9
AB-311R	311+44	29' RT	4.0	83.1	0.0	83.1	5/6/2016	ABG ⁽⁷⁾	> 83.1
AB-312R	312+13	36' RT	7.0	83.0	0.0	83.0	5/6/2016	ABG ⁽⁷⁾	> 83
AB-313R	313+03	35' RT	10.0	83.3	0.0	83.3	5/6/2016	ABG ⁽⁷⁾	> 83.3
AB-314R	314+14	57' RT	7.0	84.0	0.7	83.3	5/6/2016	0.5	83.5
AB-315R	315+04	42' RT	6.0	83.8	0.8	83.0	5/6/2016	0.0	83.8
AB-316R	316+10	29' RT	7.0	83.8	0.7	83.1	5/6/2016	0.5	83.3
AB-318R	317+98	20' RT	5.0	84.9	2.3	82.6	5/5/2016	1.0	83.9
AB-319R	319+14	11' RT	5.0	85.0	2.3	82.7	5/6/2016	1.0	84.0
AB-321R	321+11	6' RT	5.0	86.6	3.0	83.6	5/5/2016	2.0	84.6
AB-323L	323+08	2' LT	5.5	87.5	3.2	84.3	5/5/2016	3.0	84.5
AB-327L	326+82	25' LT	4.0	84.9	1.7	83.2	5/5/2016	0.5	84.4
AB-330L	330+09	7' LT	6.0	86.4	3.3	83.1	5/5/2016	2.0	84.4
AB-333L	333+09	8' LT	5.5	85.8	2.8	83.0	5/5/2016	1.0	84.8
AB-336L	336+08	4' LT	6.5	86.9	3.4	83.5	5/5/2016	2.4	84.5
AB-339L	338+98	8' LT	6.5	88.1	4.3	83.8	5/5/2016	3.5	84.6
B/L Ramp B (Borings Completed by Tierra)									
AB-399L1	399+23	23' LT	5.0	94.5	2.3	92.2	5/7/2016	0.5	94.0
AB-405L	405+47	3' LT	5.0	96.1	4.3	91.8	5/7/2016	2.0	94.1
AB-406L	406+33	9' LT	5.0	94.2	3.8	90.4	5/7/2016	2.0	92.2
AB-408R	408+33	10' RT	5.0	94.5	3.0	91.5	5/7/2016	2.5	92.0
AB-411R	411+26	18' RT	7.0	90.9	5.0	85.9	5/7/2016	2.5	88.4
AB-413R	413+43	16' RT	4.0	91.0	2.0	89.0	5/7/2016	1.0	90.0
AB-414R	414+37	10' RT	7.0	90.2	2.0	88.2	5/7/2016	1.0	89.2

Table 2
Summary of Seasonal High Groundwater Table Estimates For Roadway
Orlando South Ultimate Interchange at SR 528 and SR 91 (Florida's Turnpike)
Orange County, Florida
FPN: 438547-1-32-01
Tierra Project No.: 5511-17-004

Boring Number	Boring Location		Boring Depth ⁽¹⁾ (feet)	Ground Surface Elevation NAVD88 (feet)	Measured GWT		Date Groundwater Table Recorded	Estimated SHGWT ⁽⁶⁾	
	Station	Offset			Depth Below Ground Surface (feet)	Elevation NAVD88 (feet)		Depth Below Ground Surface (feet)	Elevation NAVD88 (feet)
AB-415R	415+36	25' RT	7.0	89.9	2.8	87.1	5/7/2016	1.0	88.9
AB-416R	416+28	19' RT	4.5	89.4	0.0	89.4	5/7/2016	ABG ⁽⁷⁾	> 89.4
AB-417R	417+38	8' RT	7.0	91.8	2.2	89.6	5/7/2016	1.5	90.3
B/L Ramp C (Borings Completed by Tierra)									
AB-505R	504+75	9' RT	6.0	96.5	5.0	91.5	5/3/2016	2.5	94.0
AB-508L	507+67	2' LT	6.5	97.6	5.0	92.6	5/3/2016	3.0	94.6
AB-511L	510+69	11' LT	6.5	94.9	4.0	90.9	5/3/2016	3.0	91.9
AB-513L	512+60	25' LT	7.0	94.7	4.0	90.7	5/3/2016	2.5	92.2
AB-516L	515+69	31' LT	6.0	90.9	0.0	90.9	5/3/2016	ABG ⁽⁷⁾	> 90.9
AB-518L	517+77	29' LT	4.5	93.0	GNE ⁽³⁾	< 88.5	5/3/2016	3.0	90.0
AB-519L	518+63	14' LT	8.0	92.0	0.5	91.5	5/3/2016	0.5	91.5
AB-520L	519+63	16' LT	7.0	91.3	2.8	88.5	5/3/2016	1.0	90.3
B/L Ramp D (Borings Completed by Tierra)									
AB-613L	613+21	47' LT	7.0	85.2	1.8	83.4	5/4/2016	1.0	84.2
AB-614L	614+01	55' LT	7.0	87.2	5.7	81.5	5/4/2016	3.0	84.2
AB-615L	615+19	40' LT	7.0	84.5	3.8	80.7	5/4/2016	1.0	83.5
AB-616L	616+29	43' LT	7.0	86.0	3.3	82.7	5/4/2016	1.5	84.5
AB-617L	617+29	39' LT	5.5	86.3	GNE ⁽³⁾	< 80.8	5/4/2016	2.0	84.3
AB-618L	618+18	26' LT	5.0	85.1	3.4	81.7	5/4/2016	1.0	84.1
AB-619L	619+23	41' LT	6.5	89.1	4.0	85.1	5/5/2016	4.0	85.1
AB-620L	620+17	15' LT	5.0	85.4	3.6	81.8	5/4/2016	2.0	83.4
AB-621L	621+13	25' LT	7.0	87.5	4.2	83.3	5/5/2016	2.5	85.0
AB-622L	622+12	17' LT	6.0	86.5	5.5	81.0	5/5/2016	2.5	84.0

Table 2
Summary of Seasonal High Groundwater Table Estimates For Roadway
Orlando South Ultimate Interchange at SR 528 and SR 91 (Florida's Turnpike)
Orange County, Florida
FPN: 438547-1-32-01
Tierra Project No.: 5511-17-004

Boring Number	Boring Location		Boring Depth ⁽¹⁾ (feet)	Ground Surface Elevation NAVD88 (feet)	Measured GWT		Date Groundwater Table Recorded	Estimated SHGWT ⁽⁶⁾	
	Station	Offset			Depth Below Ground Surface (feet)	Elevation NAVD88 (feet)		Depth Below Ground Surface (feet)	Elevation NAVD88 (feet)
AB-623L	623+19	7' LT	6.0	85.4	2.3	83.1	5/5/2016	1.0	84.4
AB-624	624+12	11' LT	5.0	86.7	2.5	84.2	5/5/2016	2.0	84.7
AB-625R	625+18	9' RT	5.0	84.3	2.3	82.0	5/5/2016	0.5	83.8
AB-626L	626+16	4' LT	5.0	87.0	1.7	85.3	5/5/2016	1.5	85.5
AB-627L	627+11	2' LT	6.0	87.5	2.5	85.0	5/5/2016	2.5	85.0
AB-628R	627+92	17' RT	5.0	84.9	3.5	81.4	5/5/2016	1.0	83.9
B/L SR 482 (Sand Lake Road) (Borings Completed by Tierra)									
AB-278R	278+06	76' RT	7.0	103.1	GNE ⁽³⁾	< 96.1	5/2/2016	ND ⁽⁸⁾	< 96.1
AB-279R	278+95	90' RT	7.0	-- ⁽²⁾	GNE ⁽³⁾	--	5/2/2016	ND ⁽⁸⁾	--
AB-280R	279+96	91' RT	7.0	-- ⁽²⁾	GNE ⁽³⁾	--	5/2/2016	ND ⁽⁸⁾	--
AB-281R	281+08	79' RT	7.0	-- ⁽²⁾	GNE ⁽³⁾	--	5/2/2016	ND ⁽⁸⁾	--
AB-281L	281+09	7' LT	7.0	112.4	GNE ⁽³⁾	< 105.4	5/2/2016	ND ⁽⁸⁾	< 105.4
AB-282L	281+78	6' LT	7.0	113.5	GNE ⁽³⁾	< 106.5	5/2/2016	ND ⁽⁸⁾	< 106.5
AB-285R	284+99	6' RT	7.0	114.4	GNE ⁽³⁾	< 107.4	5/2/2016	ND ⁽⁸⁾	< 107.4
AB-286L2	285+88	69' LT	7.0	110.7	GNE ⁽³⁾	< 103.7	5/2/2016	ND ⁽⁸⁾	< 103.7
AB-286L1	286+04	3' LT	7.0	111.7	GNE ⁽³⁾	< 104.7	5/2/2016	ND ⁽⁸⁾	< 104.7
AB-287L	287+00	60' LT	7.0	110.2	GNE ⁽³⁾	< 103.2	5/2/2016	ND ⁽⁸⁾	< 103.2
AB-287R	286+96	80' RT	7.0	110.1	GNE ⁽³⁾	< 103.1	5/3/2016	ND ⁽⁸⁾	< 103.1
AB-288L	288+01	60' LT	7.0	108.6	GNE ⁽³⁾	< 101.6	5/2/2016	ND ⁽⁸⁾	< 101.6
AB-288R	288+04	81' RT	7.0	106.6	GNE ⁽³⁾	< 99.6	5/3/2016	ND ⁽⁸⁾	< 99.6
AB-289R	288+92	85' RT	7.0	102.8	GNE ⁽³⁾	< 95.8	5/3/2016	ND ⁽⁸⁾	< 95.8
AB-290R	289+94	89' RT	7.0	98.4	GNE ⁽³⁾	< 91.4	5/3/2016	ND ⁽⁸⁾	< 91.4
AB-291R	291+12	80' RT	7.0	98.2	GNE ⁽³⁾	< 91.2	5/3/2016	ND ⁽⁸⁾	< 91.2

Table 2
Summary of Seasonal High Groundwater Table Estimates For Roadway
Orlando South Ultimate Interchange at SR 528 and SR 91 (Florida's Turnpike)
Orange County, Florida
FPN: 438547-1-32-01
Tierra Project No.: 5511-17-004

Boring Number	Boring Location		Boring Depth ⁽¹⁾ (feet)	Ground Surface Elevation NAVD88 (feet)	Measured GWT		Date Groundwater Table Recorded	Estimated SHGWT ⁽⁶⁾	
	Station	Offset			Depth Below Ground Surface (feet)	Elevation NAVD88 (feet)		Depth Below Ground Surface (feet)	Elevation NAVD88 (feet)
AB-292R	292+01	71' RT	7.0	97.6	5.7	91.9	5/3/2016	4.0	93.6
AB-293R	293+00	68' RT	7.0	96.0	5.6	90.4	5/3/2016	3.5	92.5
AB-294R	293+95	69' RT	7.0	95.4	4.0	91.4	5/3/2016	2.5	92.9

⁽¹⁾ Depth below existing grades at time of field services.

⁽²⁾ Boring was performed outside of survey limits, therefore, ground surface elevation is not defined.

⁽³⁾ Groundwater not encountered within the depth of the boring.

⁽⁴⁾ Groundwater not apparent prior to the introduction of drilling fluid.

⁽⁵⁾ Groundwater table estimated to be at or above existing ground surface.

⁽⁶⁾ Seasonal high groundwater table depth estimated based on soil stratigraphy, measured groundwater levels from the borings, the USDA/NRCS Soil Survey information, and surrounding topography.

⁽⁷⁾ Seasonal high groundwater table estimated to be at or above existing ground surface.

⁽⁸⁾ Seasonal high groundwater table estimated to be below the boring termination depth.