

**Florida's Turnpike System  
SunPass Participation (Percent of Transactions)**

Turnpike Facility	SunPass Participation		
	FY 2020	FY 2019	Change
Turnpike Mainline (SR 821)	75.3%	86.3%	(11.0)%
Southern Coin System	75.7	84.9	(9.2)
Ticket System	82.4	85.4	(3.0)
Northern Coin System	74.8	78.9	(4.1)
Beachline West Expressway	75.1	79.9	(4.8)
<b>Total Mainline</b>	<b>76.0%</b>	<b>84.1%</b>	<b>(8.1)%</b>
Sawgrass Expressway	81.0	88.9	(7.9)
Seminole Expressway	79.4	84.3	(4.9)
Veterans Expressway	78.9	84.0	(5.1)
Southern Connector Extension	77.7	81.3	(3.6)
Polk Parkway	77.8	80.4	(2.6)
Suncoast Parkway	77.8	79.7	(1.9)
Western Beltway, Part C	75.8	78.4	(2.6)
I-4 Connector	73.0	77.8	(4.8)
Beachline East Expressway	67.7	62.3	5.4
First Coast Expressway*	68.3	N/A	N/A
<b>Total Expansion Projects</b>	<b>77.3%</b>	<b>82.5%</b>	<b>(5.2)%</b>
<b>Total System</b>	<b>76.6%</b>	<b>83.5%</b>	<b>(6.9)%</b>

Source: Turnpike Enterprise Finance Office.

\* Tolling commenced in July 2019 (FY 2020)

**SunPass Transactions and Participation  
FY 2020**

Turnpike Facility	Annual Transactions			Participation
	SunPass	Non-SunPass	Total	
Turnpike Mainline (SR 821)	137,506,672	45,171,498	182,678,170	75.3%
Southern Coin System	116,350,684	37,439,816	153,790,500	75.7
Ticket System	42,184,066	9,006,811	51,190,877	82.4
Northern Coin System	66,734,686	22,476,160	89,210,846	74.8
Beachline West Expressway	23,273,319	7,718,471	30,991,790	75.1
Sawgrass Expressway	68,870,647	16,183,587	85,054,234	81.0
Seminole Expressway	32,295,280	8,390,523	40,685,803	79.4
Veterans Expressway	49,855,638	13,342,135	63,197,773	78.9
Southern Connector Extension	12,204,093	3,495,847	15,699,940	77.7
Polk Parkway	27,452,574	7,842,972	35,295,546	77.8
Suncoast Parkway	26,006,277	7,411,196	33,417,473	77.8
Western Beltway, Part C	11,352,546	3,626,245	14,978,791	75.8
I-4 Connector	13,523,752	5,001,048	18,524,800	73.0
Beachline East Expressway	13,567,332	6,468,115	20,035,447	67.7
First Coast Expressway*	17,623,804	8,192,965	25,816,769	68.3
<b>Total</b>	<b>658,801,370</b>	<b>201,767,389</b>	<b>860,568,759</b>	<b>76.6%</b>

Source: Turnpike Enterprise Finance Office.

\* Tolling commenced in July 2019 (FY 2020)

**Florida's Turnpike System**  
**Quarterly SunPass Toll Revenue**  
**FY 2020 vs. FY 2019**

Months	FY 2020	FY 2019	Variance	
			Amount	Change
July	\$72,901,749	\$73,265,562	(\$363,813)	(0.5%)
August	73,215,508	75,595,840	(2,380,332)	(3.1)
September	60,684,406	69,690,969	(9,006,563)	(12.9)
1st Quarter Subtotal	206,801,663	218,552,371	(11,750,708)	(5.4)
October	74,859,406	75,332,383	(472,977)	(0.6)
November	72,274,317	73,124,246	(849,929)	(1.2)
December	74,279,070	72,582,984	1,696,086	2.3
2nd Quarter Subtotal	221,412,793	221,039,613	373,180	0.2
January	72,783,273	73,419,169	(635,896)	(0.9)
February	71,155,005	68,610,269	2,544,736	3.7
March	59,025,060	77,848,220	(18,823,160)	(24.2)
3rd Quarter Subtotal	202,963,338	219,877,658	(16,914,320)	(7.7)
April	35,696,939	72,441,412	(36,744,473)	(50.7)
May	47,463,188	73,208,530	(25,745,342)	(35.2)
June	55,860,069	68,206,768	(12,346,699)	(18.1)
4th Quarter Subtotal	139,020,196	213,856,710	(74,836,514)	(35.0)
<b>Annual Total</b>	<b>\$770,197,990</b>	<b>\$873,326,352</b>	<b>(\$103,128,362)</b>	<b>(11.8%)</b>

Source: Turnpike Enterprise Finance Office.

**Turnpike Mainline (SR 821)  
SunPass Transactions and Participation  
FY 2020**

Month	Number of Transactions			SunPass Participation
	SunPass	Non-SunPass	Total	
July, 2019	12,974,172	3,844,677	16,818,849	77.1%
August	12,935,310	3,881,280	16,816,590	76.9
September	12,048,184	3,987,682	16,035,866	75.1
October	13,431,229	4,199,944	17,631,173	76.2
November	12,733,869	4,108,121	16,841,990	75.6
December	12,895,878	4,255,128	17,151,006	75.2
January, 2020	13,210,183	4,206,725	17,416,908	75.8
February	12,678,011	4,114,109	16,792,120	75.5
March	10,217,383	3,585,301	13,802,684	74.0
April	6,150,018	2,359,563	8,509,581	72.3
May	8,146,259	2,979,111	11,125,370	73.2
June	10,086,176	3,649,857	13,736,033	73.4
<b>Total</b>	<b>137,506,672</b>	<b>45,171,498</b>	<b>182,678,170</b>	<b>75.3%</b>

Source: Turnpike Enterprise Finance Office.

**Turnpike Mainline (SR 821)  
Quarterly SunPass Revenue Results  
FY 2020 vs. FY 2019**

Months	FY 2020	FY 2019	Variance	
			Amount	Change
July	\$12,265,867	\$13,805,321	(\$1,539,454)	(11.2%)
August	12,318,657	14,043,168	(1,724,511)	(12.3)
September	10,210,274	12,891,728	(2,681,454)	(20.8)
1st Quarter Subtotal	34,794,798	40,740,217	(5,945,419)	(14.6)
October	\$12,595,246	13,879,775	(1,284,529)	(9.3)
November	12,160,300	13,352,998	(1,192,698)	(8.9)
December	12,497,604	13,079,706	(582,102)	(4.5)
2nd Quarter Subtotal	37,253,150	40,312,479	(3,059,329)	(7.6)
January	\$12,245,933	13,286,653	(1,040,720)	(7.8)
February	11,971,973	12,530,017	(558,044)	(4.5)
March	9,931,086	13,758,994	(3,827,908)	(27.8)
3rd Quarter Subtotal	34,148,992	39,575,664	(5,426,672)	(13.7)
April	\$6,006,082	12,738,451	(6,732,369)	(52.9)
May	7,985,777	12,597,592	(4,611,815)	(36.6)
June	9,398,569	11,815,275	(2,416,706)	(20.5)
4th Quarter Subtotal	23,390,428	37,151,318	(13,760,890)	(37.0)
<b>Annual Total</b>	<b>\$129,587,368</b>	<b>\$157,779,678</b>	<b>(\$28,192,310)</b>	<b>(17.9%)</b>

Source: Turnpike Enterprise Finance Office.

**Southern Coin System  
SunPass Transactions and Participation  
FY 2020**

Month	Number of Transactions			SunPass Participation
	SunPass	Non-SunPass	Total	
July, 2019	11,103,140	3,253,890	14,357,030	77.3%
August	11,157,656	3,280,315	14,437,971	77.3
September	10,075,814	3,290,110	13,365,924	75.4
October	11,369,775	3,454,473	14,824,248	76.7
November	10,887,776	3,421,567	14,309,343	76.1
December	11,207,997	3,528,610	14,736,607	76.1
January, 2020	11,465,901	3,498,654	14,964,555	76.6
February	10,975,260	3,417,081	14,392,341	76.3
March	8,601,321	3,001,794	11,603,115	74.1
April	4,977,750	1,945,391	6,923,141	71.9
May	6,581,243	2,456,383	9,037,626	72.8
June	7,947,051	2,891,548	10,838,599	73.3
<b>Total</b>	<b>116,350,684</b>	<b>37,439,816</b>	<b>153,790,500</b>	<b>75.7%</b>

Source: Turnpike Enterprise Finance Office.

**Southern Coin System**  
**Quarterly SunPass Revenue Results**  
**FY 2020 vs. FY 2019**

Months	FY 2020	FY 2019	Variance	
			Amount	Change
July	\$10,534,822	\$11,349,805	(\$814,983)	(7.2%)
August	10,580,163	11,727,571	(1,147,408)	(9.8)
September	8,769,329	10,541,850	(1,772,521)	(16.8)
1st Quarter Subtotal	29,884,314	33,619,226	(3,734,912)	(11.1)
October	\$10,817,718	11,656,540	(838,822)	(7.2)
November	10,444,154	11,130,930	(686,776)	(6.2)
December	10,733,855	11,104,604	(370,749)	(3.3)
2nd Quarter Subtotal	31,995,727	33,892,074	(1,896,347)	(5.6)
January	\$10,517,702	11,266,781	(749,079)	(6.6)
February	10,282,405	10,627,135	(344,730)	(3.2)
March	8,529,542	11,945,443	(3,415,901)	(28.6)
3rd Quarter Subtotal	29,329,649	33,839,359	(4,509,710)	(13.3)
April	\$5,158,462	10,978,682	(5,820,220)	(53.0)
May	6,858,769	10,925,047	(4,066,278)	(37.2)
June	8,072,178	10,057,434	(1,985,256)	(19.7)
4th Quarter Subtotal	20,089,409	31,961,163	(11,871,754)	(37.1)
Lantana Adjustment *	17,297,702	19,957,798	(2,660,096)	(13.3)
<b>Annual Total</b>	<b>\$128,596,801</b>	<b>\$153,269,620</b>	<b>(\$24,672,819)</b>	<b>(16.1%)</b>

Source: Turnpike Enterprise Finance Office.

\* Amount based on actual two-way revenue traffic at the plaza multiplied by an average adjustment rate.

**Ticket System**  
**SunPass Transactions and Participation**  
**FY 2020**

Month	Number of Transactions			SunPass Participation
	SunPass	Non-SunPass	Total	
July, 2019	3,913,193	857,849	4,771,042	82.0%
August	3,911,575	791,834	4,703,409	83.2
September	3,459,145	744,940	4,204,085	82.3
October	4,052,829	786,406	4,839,235	83.7
November	3,949,684	825,581	4,775,265	82.7
December	4,037,029	906,405	4,943,434	81.7
January, 2020	4,096,118	833,407	4,929,525	83.1
February	3,907,527	811,114	4,718,641	82.8
March	3,229,925	709,534	3,939,459	82.0
April	1,928,687	410,966	2,339,653	82.4
May	2,624,062	595,103	3,219,165	81.5
June	3,074,292	733,672	3,807,964	80.7
<b>Total</b>	<b>42,184,066</b>	<b>9,006,811</b>	<b>51,190,877</b>	<b>82.4%</b>

Source: Turnpike Enterprise Finance Office.



**Ticket System**  
**Quarterly SunPass Revenue Results**  
**FY 2020 vs. FY 2019**

Months	FY 2020	FY 2019	Variance	
			Amount	Change
July	\$14,461,164	\$14,736,440	(\$275,276)	(1.9%)
August	14,523,403	14,609,780	(86,377)	(0.6)
September	12,037,669	13,153,239	(1,115,570)	(8.5)
1st Quarter Subtotal	41,022,236	42,499,459	(1,477,223)	(3.5)
October	\$14,849,495	14,544,932	304,563	2.1
November	14,336,703	14,997,790	(661,087)	(4.4)
December	14,734,376	14,979,261	(244,885)	(1.6)
2nd Quarter Subtotal	43,920,574	44,521,983	(601,409)	(1.4)
January	\$14,437,662	14,342,797	94,865	0.7
February	14,114,671	13,066,334	1,048,337	8.0
March	11,708,513	15,737,225	(4,028,712)	(25.6)
3rd Quarter Subtotal	40,260,846	43,146,356	(2,885,510)	(6.7)
April	\$7,081,027	14,052,918	(6,971,891)	(49.6)
May	9,415,041	14,816,786	(5,401,745)	(36.5)
June	11,080,689	13,975,588	(2,894,899)	(20.7)
4th Quarter Subtotal	27,576,757	42,845,292	(15,268,535)	(35.6)
Lantana Adjustment*	(17,297,702)	(19,957,798)	2,660,096	(13.3)
Three Lakes Adjustment**	(10,352,537)	(11,654,125)	1,301,588	(11.2)
Total Adjustments	(27,650,239)	(31,611,923)	3,961,684	(12.5)
<b>Annual Total</b>	<b>\$125,130,174</b>	<b>\$141,401,167</b>	<b>(\$16,270,993)</b>	<b>(11.5%)</b>

Source: Turnpike Enterprise Finance Office.

\* Allocated to Southern Coin System, amount based on actual two-way revenue traffic at the plaza multiplied by an average adjustment rate.

\*\* Allocated to Northern Coin System, amount based on actual two-way revenue traffic at the plaza multiplied by an average adjustment rate.

**Northern Coin System  
SunPass Transactions and Participation  
FY 2020**

Month	Number of Transactions			SunPass Participation
	SunPass	Non-SunPass	Total	
July, 2019	6,225,784	2,227,435	8,453,219	73.6%
August	6,308,027	2,012,626	8,320,653	75.8
September	5,692,686	1,931,740	7,624,426	74.7
October	6,471,934	2,087,492	8,559,426	75.6
November	6,158,037	2,077,221	8,235,258	74.8
December	6,376,630	2,217,739	8,594,369	74.2
January, 2020	6,348,925	2,044,236	8,393,161	75.6
February	6,068,421	2,017,640	8,086,061	75.0
March	5,111,831	1,765,677	6,877,508	74.3
April	3,031,262	996,747	4,028,009	75.3
May	4,142,260	1,397,822	5,540,082	74.8
June	4,798,889	1,699,785	6,498,674	73.8
<b>Total</b>	<b>66,734,686</b>	<b>22,476,160</b>	<b>89,210,846</b>	<b>74.8%</b>

Source: Turnpike Enterprise Finance Office.

**Northern Coin System  
Quarterly SunPass Revenue Results  
FY 2020 vs. FY 2019**

Months	FY 2020	FY 2019	Variance	
			Amount	Change
July	\$9,827,553	\$9,056,031	\$771,522	8.5%
August	9,869,849	9,339,404	530,445	5.7
September	8,180,588	8,659,013	(478,425)	(5.5)
1st Quarter Subtotal	27,877,990	27,054,448	823,542	3.0
October	\$10,091,456	9,511,492	579,964	6.1
November	9,742,972	9,201,423	541,549	5.9
December	10,013,223	8,949,881	1,063,342	11.9
2nd Quarter Subtotal	29,847,651	27,662,796	2,184,855	7.9
January	\$9,811,582	9,113,609	697,973	7.7
February	9,592,082	8,533,009	1,059,073	12.4
March	7,956,900	9,880,973	(1,924,073)	(19.5)
3rd Quarter Subtotal	27,360,564	27,527,591	(167,027)	(0.6)
April	\$4,812,142	9,282,570	(4,470,428)	(48.2)
May	6,398,296	9,531,437	(3,133,141)	(32.9)
June	7,530,242	8,944,810	(1,414,568)	(15.8)
4th Quarter Subtotal	18,740,680	27,758,817	(9,018,137)	(32.5)
Three Lakes Adjustment *	10,352,537	11,654,125	(1,301,588)	(11.2)
<b>Annual Total</b>	<b>\$114,179,422</b>	<b>\$121,657,777</b>	<b>(\$7,478,355)</b>	<b>(6.1%)</b>

Source: Turnpike Enterprise Finance Office.

\* Amount based on actual two-way revenue traffic at the plaza multiplied by an average adjustment rate.

**Beachline West Expressway  
SunPass Transactions and Participation  
FY 2020**

Month	Number of Transactions			SunPass Participation
	SunPass	Non-SunPass	Total	
July, 2019	2,311,185	761,717	3,072,902	75.2%
August	2,304,115	735,544	3,039,659	75.8
September	2,030,427	753,752	2,784,179	72.9
October	2,472,628	795,640	3,268,268	75.7
November	2,363,294	783,801	3,147,095	75.1
December	2,401,968	805,617	3,207,585	74.9
January, 2020	2,440,724	787,174	3,227,898	75.6
February	2,365,935	769,392	3,135,327	75.5
March	1,673,609	546,105	2,219,714	75.4
April	674,223	220,674	894,897	75.3
May	996,999	328,704	1,325,703	75.2
June	1,238,212	430,351	1,668,563	74.2
<b>Total</b>	<b>23,273,319</b>	<b>7,718,471</b>	<b>30,991,790</b>	<b>75.1%</b>

Source: Turnpike Enterprise Finance Office.

**Beachline West Expressway  
Quarterly Sunpass Revenue Results  
FY 2020 vs. FY 2019**

Months	FY 2020	FY 2019	Variance	
			Amount	Change
July	\$1,655,242	\$1,920,540	(\$265,298)	(13.8%)
August	1,662,366	1,472,489	189,877	12.9
September	1,377,846	2,679,792	(1,301,946)	(48.6)
1st Quarter Subtotal	4,695,454	6,072,821	(1,377,367)	(22.7)
October	\$1,699,691	1,771,507	(71,816)	(4.1)
November	1,640,996	1,639,272	1,724	0.1
December	1,686,514	1,796,073	(109,559)	(6.1)
2nd Quarter Subtotal	5,027,201	5,206,852	(179,651)	(3.5)
January	\$1,652,552	1,949,667	(297,115)	(15.2)
February	1,615,582	1,551,279	64,303	4.1
March	1,340,170	1,769,451	(429,281)	(24.3)
3rd Quarter Subtotal	4,608,304	5,270,397	(662,093)	(12.6)
April	\$810,503	1,811,938	(1,001,435)	(55.3)
May	1,077,657	1,811,955	(734,298)	(40.5)
June	1,268,309	1,744,037	(475,728)	(27.3)
4th Quarter Subtotal	3,156,469	5,367,930	(2,211,461)	(41.2)
<b>Annual Total</b>	<b>\$17,487,428</b>	<b>\$21,918,000</b>	<b>(\$4,430,572)</b>	<b>(20.2%)</b>

Source: Turnpike Enterprise Finance Office.

**Sawgrass Expressway  
SunPass Transactions and Participation  
FY 2020**

Month	Number of Transactions			SunPass Participation
	SunPass	Non-SunPass	Total	
July, 2019	6,414,273	1,368,901	7,783,174	82.4%
August	6,616,825	1,439,860	8,056,685	82.1
September	6,077,311	1,410,898	7,488,209	81.2
October	6,833,473	1,550,145	8,383,618	81.5
November	6,545,265	1,522,290	8,067,555	81.1
December	6,731,012	1,571,706	8,302,718	81.1
January, 2020	6,798,817	1,534,158	8,332,975	81.6
February	6,539,160	1,516,867	8,056,027	81.2
March	5,070,667	1,299,250	6,369,917	79.6
April	2,814,181	780,336	3,594,517	78.3
May	3,807,575	998,495	4,806,070	79.2
June	4,622,088	1,190,681	5,812,769	79.5
<b>Total</b>	<b>68,870,647</b>	<b>16,183,587</b>	<b>85,054,234</b>	<b>81.0%</b>

Source: Turnpike Enterprise Finance Office.

**Sawgrass Expressway  
Quarterly SunPass Revenue Results  
FY 2020 vs. FY 2019**

Months	FY 2020	FY 2019	Variance	
			Amount	Change
July	\$6,622,046	\$6,792,060	(\$170,014)	(2.5%)
August	6,650,547	7,169,199	(518,652)	(7.2)
September	5,512,281	6,527,422	(1,015,141)	(15.6)
1st Quarter Subtotal	18,784,874	20,488,681	(1,703,807)	(8.3)
October	6,799,871	7,195,580	(395,709)	(5.5)
November	6,565,053	6,898,694	(333,641)	(4.8)
December	6,747,156	6,914,973	(167,817)	(2.4)
2nd Quarter Subtotal	20,112,080	21,009,247	(897,167)	(4.3)
January	6,611,285	7,068,886	(457,601)	(6.5)
February	6,463,380	6,751,450	(288,070)	(4.3)
March	5,361,554	7,347,459	(1,985,905)	(27.0)
3rd Quarter Subtotal	18,436,219	21,167,795	(2,731,576)	(12.9)
April	3,242,539	6,912,017	(3,669,478)	(53.1)
May	4,311,329	6,889,967	(2,578,638)	(37.4)
June	5,074,062	6,241,084	(1,167,022)	(18.7)
4th Quarter Subtotal	12,627,930	20,043,068	(7,415,138)	(37.0)
<b>Annual Total</b>	<b>\$69,961,103</b>	<b>\$82,708,791</b>	<b>(\$12,747,688)</b>	<b>(15.4%)</b>

Source: Turnpike Enterprise Finance Office.

**Seminole Expressway  
SunPass Transactions and Participation  
FY 2020**

Month	Number of Transactions			SunPass Participation
	SunPass	Non-SunPass	Total	
July, 2019	3,035,303	769,981	3,805,284	79.8%
August	3,089,185	759,763	3,848,948	80.3
September	2,784,763	729,707	3,514,470	79.2
October	3,201,453	786,272	3,987,725	80.3
November	2,976,532	758,764	3,735,296	79.7
December	3,037,516	783,470	3,820,986	79.5
January, 2020	3,078,548	766,295	3,844,843	80.1
February	2,976,460	747,931	3,724,391	79.9
March	2,432,577	656,335	3,088,912	78.8
April	1,421,579	425,271	1,846,850	77.0
May	1,981,077	570,746	2,551,823	77.6
June	2,280,287	635,988	2,916,275	78.2
<b>Total</b>	<b>32,295,280</b>	<b>8,390,523</b>	<b>40,685,803</b>	<b>79.4%</b>

Source: Turnpike Enterprise Finance Office.



**Seminole Expressway  
Quarterly SunPass Revenue Results  
FY 2020 vs. FY 2019**

Months	FY 2020	FY 2019	Variance	
			Amount	Change
July	\$4,357,521	\$4,050,145	\$307,376	7.6%
August	4,376,275	4,429,267	(52,992)	(1.2)
September	3,627,260	4,036,896	(409,636)	(10.1)
1st Quarter Subtotal	12,361,056	12,516,308	(155,252)	(1.2)
October	4,474,535	4,437,328	37,207	0.8
November	4,320,018	4,128,376	191,642	4.6
December	4,439,847	3,991,803	448,044	11.2
2nd Quarter Subtotal	13,234,400	12,557,507	676,893	5.4
January	4,350,439	4,204,854	145,585	3.5
February	4,253,114	3,991,357	261,757	6.6
March	3,528,076	4,491,371	(963,295)	(21.4)
3rd Quarter Subtotal	12,131,629	12,687,582	(555,953)	(4.4)
April	2,133,696	4,335,674	(2,201,978)	(50.8)
May	2,836,994	4,356,405	(1,519,411)	(34.9)
June	3,338,897	4,046,864	(707,967)	(17.5)
4th Quarter Subtotal	8,309,587	12,738,943	(4,429,356)	(34.8)
<b>Annual Total</b>	<b>\$46,036,672</b>	<b>\$50,500,340</b>	<b>(\$4,463,668)</b>	<b>(8.8%)</b>

Source: Turnpike Enterprise Finance Office.

**Veterans Expressway  
SunPass Transactions and Participation  
FY 2020**

Month	Number of Transactions			SunPass Participation
	SunPass	Non-SunPass	Total	
July, 2019	4,629,795	1,164,308	5,794,103	79.9%
August	4,839,435	1,197,182	6,036,617	80.2
September	4,549,524	1,161,080	5,710,604	79.7
October	4,913,078	1,253,097	6,166,175	79.7
November	4,600,566	1,207,991	5,808,557	79.2
December	4,823,960	1,266,601	6,090,561	79.2
January, 2020	4,838,312	1,241,534	6,079,846	79.6
February	4,641,509	1,225,161	5,866,670	79.1
March	3,710,012	1,060,299	4,770,311	77.8
April	2,085,635	650,090	2,735,725	76.2
May	2,895,173	901,953	3,797,126	76.2
June	3,328,639	1,012,839	4,341,478	76.7
<b>Total</b>	<b>49,855,638</b>	<b>13,342,135</b>	<b>63,197,773</b>	<b>78.9%</b>

Source: Turnpike Enterprise Finance Office.

**Veterans Expressway  
Quarterly SunPass Revenue Results  
FY 2020 vs. FY 2019**

Months	FY 2020	FY 2019	Variance	
			Amount	Change
July	\$4,208,983	\$4,083,343	\$125,640	3.1%
August	4,227,098	4,327,943	(100,845)	(2.3)
September	3,503,614	3,941,713	(438,099)	(11.1)
1st Quarter Subtotal	11,939,695	12,352,999	(413,304)	(3.3)
October	4,322,008	4,312,718	9,290	0.2
November	4,172,758	4,091,424	81,334	2.0
December	4,288,502	4,108,575	179,927	4.4
2nd Quarter Subtotal	12,783,268	12,512,717	270,551	2.2
January	4,202,143	4,219,544	(17,401)	(0.4)
February	4,108,135	4,010,938	97,197	2.4
March	3,407,812	4,398,524	(990,712)	(22.5)
3rd Quarter Subtotal	11,718,090	12,629,006	(910,916)	(7.2)
April	2,060,963	4,237,114	(2,176,151)	(51.4)
May	2,740,287	4,233,494	(1,493,207)	(35.3)
June	3,225,081	3,933,106	(708,025)	(18.0)
4th Quarter Subtotal	8,026,331	12,403,714	(4,377,383)	(35.3)
<b>Annual Total</b>	<b>\$44,467,384</b>	<b>\$49,898,436</b>	<b>(\$5,431,052)</b>	<b>(10.9%)</b>

Source: Turnpike Enterprise Finance Office.

**Southern Connector Extension  
SunPass Transactions and Participation  
FY 2020**

Month	Number of Transactions			SunPass Participation
	SunPass	Non-SunPass	Total	
July, 2019	1,250,181	387,078	1,637,259	76.4%
August	1,198,709	331,397	1,530,106	78.3
September	1,023,609	279,981	1,303,590	78.5
October	1,214,580	328,471	1,543,051	78.7
November	1,197,047	337,270	1,534,317	78.0
December	1,285,914	383,462	1,669,376	77.0
January, 2020	1,251,995	346,661	1,598,656	78.3
February	1,246,622	358,206	1,604,828	77.7
March	880,080	255,307	1,135,387	77.5
April	385,908	112,221	498,129	77.5
May	586,915	169,925	756,840	77.5
June	682,533	205,868	888,401	76.8
<b>Total</b>	<b>12,204,093</b>	<b>3,495,847</b>	<b>15,699,940</b>	<b>77.7%</b>

Source: Turnpike Enterprise Finance Office.

**Southern Connector Extension  
Quarterly SunPass Revenue Results  
FY 2020 vs. FY 2019**

Months	FY 2020	FY 2019	Variance	
			Amount	Change
July	\$972,398	\$1,021,910	(\$49,512)	(4.8%)
August	976,583	993,437	(16,854)	(1.7)
September	809,437	905,221	(95,784)	(10.6)
1st Quarter Subtotal	2,758,418	2,920,568	(162,150)	(5.6)
October	998,510	1,005,970	(7,460)	(0.7)
November	964,029	985,721	(21,692)	(2.2)
December	990,769	1,000,703	(9,934)	(1.0)
2nd Quarter Subtotal	2,953,308	2,992,394	(39,086)	(1.3)
January	970,818	1,015,065	(44,247)	(4.4)
February	949,099	962,158	(13,059)	(1.4)
March	787,304	1,105,796	(318,492)	(28.8)
3rd Quarter Subtotal	2,707,221	3,083,019	(375,798)	(12.2)
April	476,143	1,017,793	(541,650)	(53.2)
May	633,086	1,021,668	(388,582)	(38.0)
June	745,088	961,927	(216,839)	(22.5)
4th Quarter Subtotal	1,854,317	3,001,388	(1,147,071)	(38.2)
<b>Annual Total</b>	<b>\$10,273,264</b>	<b>\$11,997,369</b>	<b>(\$1,724,105)</b>	<b>(14.4%)</b>

Source: Turnpike Enterprise Finance Office.

**Polk Parkway  
SunPass Transactions and Participation  
FY 2020**

Month	Number of Transactions			SunPass Participation
	SunPass	Non-SunPass	Total	
July, 2019	2,380,780	661,655	3,042,435	78.3%
August	2,502,896	672,785	3,175,681	78.8
September	2,344,266	636,951	2,981,217	78.6
October	2,603,118	708,458	3,311,576	78.6
November	2,444,206	697,248	3,141,454	77.8
December	2,552,121	730,538	3,282,659	77.7
January, 2020	2,598,238	716,376	3,314,614	78.4
February	2,555,580	728,511	3,284,091	77.8
March	2,190,789	648,934	2,839,723	77.1
April	1,404,875	435,109	1,839,984	76.4
May	1,827,821	573,048	2,400,869	76.1
June	2,047,884	633,359	2,681,243	76.4
<b>Total</b>	<b>27,452,574</b>	<b>7,842,972</b>	<b>35,295,546</b>	<b>77.8%</b>

Source: Turnpike Enterprise Finance Office.

**Polk Parkway  
Quarterly SunPass Revenue Results  
FY 2020 vs. FY 2019**

Months	FY 2020	FY 2019	Variance	
			Amount	Change
July	\$2,597,524	\$2,293,972	\$303,552	13.2%
August	2,608,704	2,465,828	142,876	5.8
September	2,162,214	2,255,399	(93,185)	(4.1)
1st Quarter Subtotal	7,368,442	7,015,199	353,243	5.0
October	2,667,276	2,479,982	187,294	7.6
November	2,575,169	2,348,088	227,081	9.7
December	2,646,599	2,327,160	319,439	13.7
2nd Quarter Subtotal	7,889,044	7,155,230	733,814	10.3
January	2,593,303	2,457,204	136,099	5.5
February	2,535,287	2,318,761	216,526	9.3
March	2,103,091	2,573,020	(469,929)	(18.3)
3rd Quarter Subtotal	7,231,681	7,348,985	(117,304)	(1.6)
April	1,271,899	2,512,099	(1,240,200)	(49.4)
May	1,691,136	2,481,630	(790,494)	(31.9)
June	1,990,321	2,243,595	(253,274)	(11.3)
4th Quarter Subtotal	4,953,356	7,237,324	(2,283,968)	(31.6)
<b>Annual Total</b>	<b>\$27,442,523</b>	<b>\$28,756,738</b>	<b>(\$1,314,215)</b>	<b>(4.6%)</b>

Source: Turnpike Enterprise Finance Office.

**Suncoast Parkway  
SunPass Transactions and Participation  
FY 2020**

Month	Number of Transactions			SunPass Participation
	SunPass	Non-SunPass	Total	
July, 2019	2,315,414	697,478	3,012,892	76.9%
August	2,411,710	681,436	3,093,146	78.0
September	2,284,989	649,939	2,934,928	77.9
October	2,463,327	702,280	3,165,607	77.8
November	2,364,151	675,502	3,039,653	77.8
December	2,468,488	677,412	3,145,900	78.5
January, 2020	2,447,391	666,342	3,113,733	78.6
February	2,368,573	625,165	2,993,738	79.1
March	2,018,078	571,671	2,589,749	77.9
April	1,258,208	371,126	1,629,334	77.2
May	1,708,252	518,348	2,226,600	76.7
June	1,897,696	574,497	2,472,193	76.8
<b>Total</b>	<b>26,006,277</b>	<b>7,411,196</b>	<b>33,417,473</b>	<b>77.8%</b>

Source: Turnpike Enterprise Finance Office.



**Suncoast Parkway  
Quarterly SunPass Revenue Results  
FY 2020 vs. FY 2019**

Months	FY 2020	FY 2019	Variance	
			Amount	Change
July	\$2,055,076	\$1,944,474	\$110,602	5.7%
August	2,063,921	2,130,668	(66,747)	(3.1)
September	1,710,673	1,911,190	(200,517)	(10.5)
1st Quarter Subtotal	5,829,670	5,986,332	(156,662)	(2.6)
October	2,110,262	2,093,912	16,350	0.8
November	2,037,389	2,015,318	22,071	1.1
December	2,093,902	2,022,271	71,631	3.5
2nd Quarter Subtotal	6,241,553	6,131,501	110,052	1.8
January	2,051,736	2,039,443	12,293	0.6
February	2,005,836	1,922,723	83,113	4.3
March	1,663,897	2,162,433	(498,536)	(23.1)
3rd Quarter Subtotal	5,721,469	6,124,599	(403,130)	(6.6)
April	1,006,285	2,059,998	(1,053,713)	(51.2)
May	1,337,971	2,056,181	(718,210)	(34.9)
June	1,574,677	1,896,608	(321,931)	(17.0)
4th Quarter Subtotal	3,918,933	6,012,787	(2,093,854)	(34.8)
<b>Annual Total</b>	<b>\$21,711,625</b>	<b>\$24,255,219</b>	<b>(\$2,543,594)</b>	<b>(10.5%)</b>

Source: Turnpike Enterprise Finance Office.

**Western Beltway, Part C**  
**SunPass Transactions and Participation**  
**FY 2020**

Month	Number of Transactions			SunPass Participation
	SunPass	Non-SunPass	Total	
July, 2019	1,138,279	429,046	1,567,325	72.6%
August	1,071,579	336,063	1,407,642	76.1
September	900,022	269,057	1,169,079	77.0
October	1,078,631	321,547	1,400,178	77.0
November	1,082,147	344,814	1,426,961	75.8
December	1,140,546	373,806	1,514,352	75.3
January, 2020	1,133,709	330,519	1,464,228	77.4
February	1,128,586	348,943	1,477,529	76.4
March	857,013	278,366	1,135,379	75.5
April	447,213	136,268	583,481	76.6
May	635,884	203,145	839,029	75.8
June	738,937	254,671	993,608	74.4
<b>Total</b>	<b>11,352,546</b>	<b>3,626,245</b>	<b>14,978,791</b>	<b>75.8%</b>

Source: Turnpike Enterprise Finance Office.

**Western Beltway, Part C**  
**Quarterly SunPass Revenue Results**  
**FY 2020 vs. FY 2019**

Months	FY 2020	FY 2019	Variance	
			Amount	Change
July	\$1,158,732	\$1,104,360	\$54,372	4.9%
August	1,163,719	1,092,583	71,136	6.5
September	964,545	954,916	9,629	1.0
1st Quarter Subtotal	3,286,996	3,151,859	135,137	4.3
October	1,189,848	1,084,472	105,376	9.7
November	1,148,760	1,063,592	85,168	8.0
December	1,180,624	1,054,949	125,675	11.9
2nd Quarter Subtotal	3,519,232	3,203,013	316,219	9.9
January	1,156,849	1,107,966	48,883	4.4
February	1,130,969	1,085,341	45,628	4.2
March	938,170	1,276,897	(338,727)	(26.5)
3rd Quarter Subtotal	3,225,988	3,470,204	(244,216)	(7.0)
April	567,383	1,147,799	(580,416)	(50.6)
May	754,401	1,138,001	(383,600)	(33.7)
June	887,864	1,087,788	(199,924)	(18.4)
4th Quarter Subtotal	2,209,648	3,373,588	(1,163,940)	(34.5)
<b>Annual Total</b>	<b>\$12,241,864</b>	<b>\$13,198,664</b>	<b>(\$956,800)</b>	<b>(7.2%)</b>

Source: Turnpike Enterprise Finance Office.

**I-4 Connector  
SunPass Transactions and Participation  
FY 2020**

Month	Number of Transactions			SunPass Participation
	SunPass	Non-SunPass	Total	
July, 2019	1,231,514	442,101	1,673,615	73.6%
August	1,258,463	442,077	1,700,540	74.0
September	1,184,183	426,480	1,610,663	73.5
October	1,283,938	463,346	1,747,284	73.5
November	1,208,737	442,876	1,651,613	73.2
December	1,248,533	451,878	1,700,411	73.4
January, 2020	1,274,510	443,218	1,717,728	74.2
February	1,228,656	435,633	1,664,289	73.8
March	1,036,572	395,295	1,431,867	72.4
April	670,248	281,325	951,573	70.4
May	908,030	375,053	1,283,083	70.8
June	990,368	401,766	1,392,134	71.1
<b>Total</b>	<b>13,523,752</b>	<b>5,001,048</b>	<b>18,524,800</b>	<b>73.0%</b>

Source: Turnpike Enterprise Finance Office.

**I-4 Connector**  
**Quarterly SunPass Revenue Results**  
**FY 2020 vs. FY 2019**

Months	FY 2020	FY 2019	Variance	
			Amount	Change
July	\$1,039,625	\$986,481	\$53,144	5.4%
August	1,044,099	1,047,376	(3,277)	(0.3)
September	865,398	944,736	(79,338)	(8.4)
1st Quarter Subtotal	2,949,122	2,978,593	(29,471)	(1.0)
October	1,067,542	1,035,988	31,554	3.0
November	1,030,677	980,249	50,428	5.1
December	1,059,267	969,315	89,952	9.3
2nd Quarter Subtotal	3,157,486	2,985,552	171,934	5.8
January	1,037,936	1,015,007	22,929	2.3
February	1,014,715	960,358	54,357	5.7
March	841,735	1,059,838	(218,103)	(20.6)
3rd Quarter Subtotal	2,894,386	3,035,203	(140,817)	(4.6)
April	509,061	999,102	(490,041)	(49.0)
May	676,855	1,001,666	(324,811)	(32.4)
June	796,600	937,013	(140,413)	(15.0)
4th Quarter Subtotal	1,982,516	2,937,781	(955,265)	(32.5)
<b>Annual Total</b>	<b>\$10,983,510</b>	<b>\$11,937,129</b>	<b>(\$953,619)</b>	<b>(8.0%)</b>

Source: Turnpike Enterprise Finance Office.

**Beachline East Expressway  
SunPass Transactions and Participation  
FY 2020**

Month	Number of Transactions			SunPass Participation
	SunPass	Non-SunPass	Total	
July, 2019	1,133,487	742,360	1,875,847	60.4%
August	1,115,762	646,187	1,761,949	63.3
September	908,117	642,067	1,550,184	58.6
October	1,350,608	366,825	1,717,433	78.6
November	1,364,763	597,329	1,962,092	69.6
December	1,355,962	633,940	1,989,902	68.1
January, 2020	1,374,829	612,966	1,987,795	69.2
February	1,363,717	611,713	1,975,430	69.0
March	1,145,486	492,823	1,638,309	69.9
April	594,351	233,689	828,040	71.8
May	895,310	402,839	1,298,149	69.0
June	964,940	485,377	1,450,317	66.5
<b>Total</b>	<b>13,567,332</b>	<b>6,468,115</b>	<b>20,035,447</b>	<b>67.7%</b>

Source: Turnpike Enterprise Finance Office.

**Beachline East Expressway  
Quarterly SunPass Revenue Results  
FY 2020 vs. FY 2019**

Months	FY 2020	FY 2019	Variance	
			Amount	Change
July	\$351,841	\$120,680	\$231,161	191.5%
August	353,356	747,125	(393,769)	(52.7)
September	292,878	287,855	5,023	1.7
1st Quarter Subtotal	998,075	1,155,660	(157,585)	(13.6)
October	361,290	322,188	39,102	12.1
November	348,813	290,371	58,442	20.1
December	358,489	283,710	74,779	26.4
2nd Quarter Subtotal	1,068,592	896,269	172,323	19.2
January	351,270	331,692	19,578	5.9
February	343,411	299,407	44,004	14.7
March	284,869	340,796	(55,927)	(16.4)
3rd Quarter Subtotal	979,550	971,895	7,655	0.8
April	172,282	355,258	(182,976)	(51.5)
May	229,069	346,701	(117,632)	(33.9)
June	269,594	321,639	(52,045)	(16.2)
4th Quarter Subtotal	670,945	1,023,598	(352,653)	(34.5)
<b>Annual Total</b>	<b>\$3,717,162</b>	<b>\$4,047,422</b>	<b>(\$330,260)</b>	<b>(8.2%)</b>

Source: Turnpike Enterprise Finance Office.

**First Coast Expressway  
SunPass Transactions and Participation  
FY 2020**

Month	Number of Transactions			SunPass Participation
	SunPass	Non-SunPass	Total	
July, 2019*	908,097	531,333	1,439,430	63.1%
August	1,624,309	804,723	2,429,032	66.9
September	1,517,681	742,201	2,259,882	67.2
October	1,722,573	756,613	2,479,186	69.5
November	1,597,902	724,943	2,322,845	68.8
December	1,661,944	754,673	2,416,617	68.8
January, 2020	1,672,987	706,825	2,379,812	70.3
February	1,617,371	692,496	2,309,867	70.0
March	1,479,752	664,304	2,144,056	69.0
April	1,080,254	510,902	1,591,156	67.9
May	1,319,417	632,281	1,951,698	67.6
June	1,421,517	671,671	2,093,188	67.9
<b>Total</b>	<b>17,623,804</b>	<b>8,192,965</b>	<b>25,816,769</b>	<b>68.3%</b>

Source: Turnpike Enterprise Finance Office.

\*Tolling on First Coast Expressway commenced on July 13, 2019



**First Coast Expressway  
Quarterly SunPass Revenue  
Results\*  
FY 2020**

Months	FY 2020
July	\$793,354
August	796,769
September	660,399
1st Quarter Subtotal	2,250,522
October	814,659
November	786,526
December	808,343
2nd Quarter Subtotal	2,409,528
January	792,065
February	774,346
March	642,341
3rd Quarter Subtotal	2,208,752
April	388,473
May	516,519
June	607,898
4th Quarter Subtotal	1,512,890
<b>Annual Total</b>	<b>\$8,381,692</b>

Source: Turnpike Enterprise Finance Office.

\*Tolling commenced July 13, 2019

**Mainline Seasonal Variation  
SunPass Traffic  
FY 2020**

Month	Seasonal Factor				
	Turnpike Mainline (SR 821)	Southern Coin System	Ticket System	Northern Coin System	Beachline West Expressway
July, 2019	1.11	1.13	1.10	1.10	1.17
August	1.11	1.13	1.09	1.12	1.17
September	1.07	1.06	1.00	1.04	1.06
October	1.15	1.15	1.13	1.14	1.25
November	1.13	1.14	1.14	1.13	1.24
December	1.11	1.14	1.13	1.13	1.22
January, 2020	1.13	1.16	1.15	1.12	1.24
February	1.16	1.19	1.17	1.15	1.28
March	0.88	0.87	0.90	0.90	0.85
April	0.55	0.52	0.56	0.55	0.35
May	0.70	0.67	0.73	0.73	0.51
June	0.89	0.83	0.89	0.88	0.65

Source: Turnpike Enterprise Finance Office.

\* Reliance should be limited, for FY 2020, on these seasonal factor ratios due to the impacts of COVID-19 in the last five months of the year.

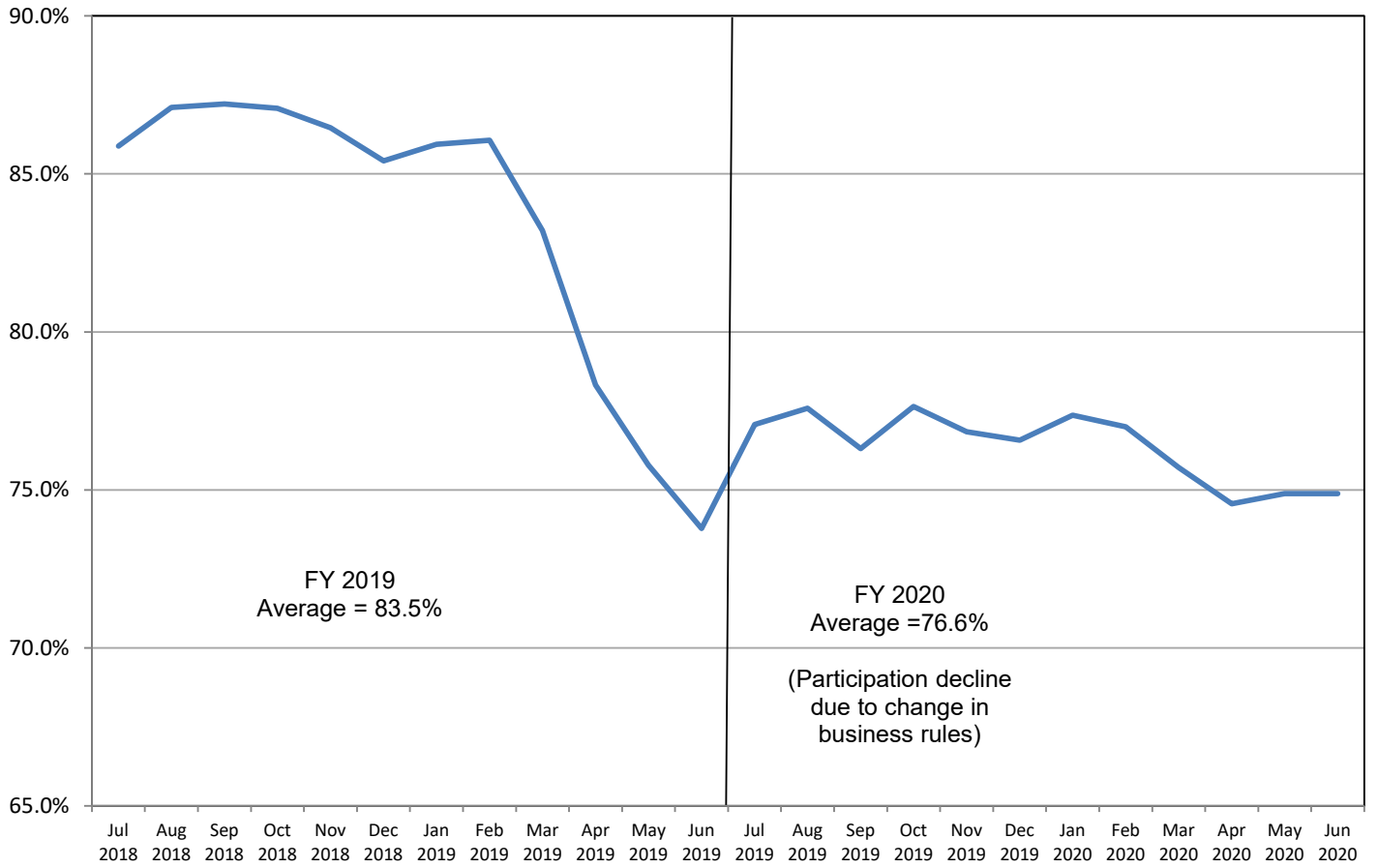
**Expansion Projects Seasonal Variation  
SunPass Traffic  
FY 2020**

Month	Seasonal Factor									
	Sawgrass Expressway	Seminole Expressway	Veterans Expressway	Southern Conn. Ext.	Polk Parkway	Suncoast Parkway	Western Beltway, Part C	I-4 Connector	Beachline East Expressway	First Coast Expressway
July, 2019	1.10	1.11	1.10	1.21	1.02	1.05	1.18	1.08	0.99	0.96
August	1.13	1.13	1.15	1.16	1.08	1.09	1.11	1.10	0.97	1.05
September	1.08	1.05	1.11	1.02	1.04	1.07	0.97	1.07	0.82	1.02
October	1.17	1.17	1.16	1.18	1.12	1.12	1.12	1.12	1.18	1.12
November	1.16	1.12	1.13	1.20	1.09	1.11	1.16	1.09	1.23	1.07
December	1.15	1.11	1.14	1.24	1.10	1.12	1.19	1.09	1.18	1.08
January, 2020	1.17	1.13	1.15	1.21	1.12	1.11	1.18	1.11	1.20	1.08
February	1.20	1.16	1.17	1.29	1.17	1.15	1.25	1.15	1.27	1.12
March	0.87	0.89	0.88	0.85	0.94	0.92	0.89	0.90	1.00	0.96
April	0.50	0.54	0.51	0.39	0.62	0.59	0.48	0.60	0.53	0.72
May	0.65	0.72	0.69	0.57	0.79	0.78	0.66	0.79	0.78	0.85
June	0.82	0.86	0.81	0.68	0.91	0.89	0.79	0.89	0.87	0.95

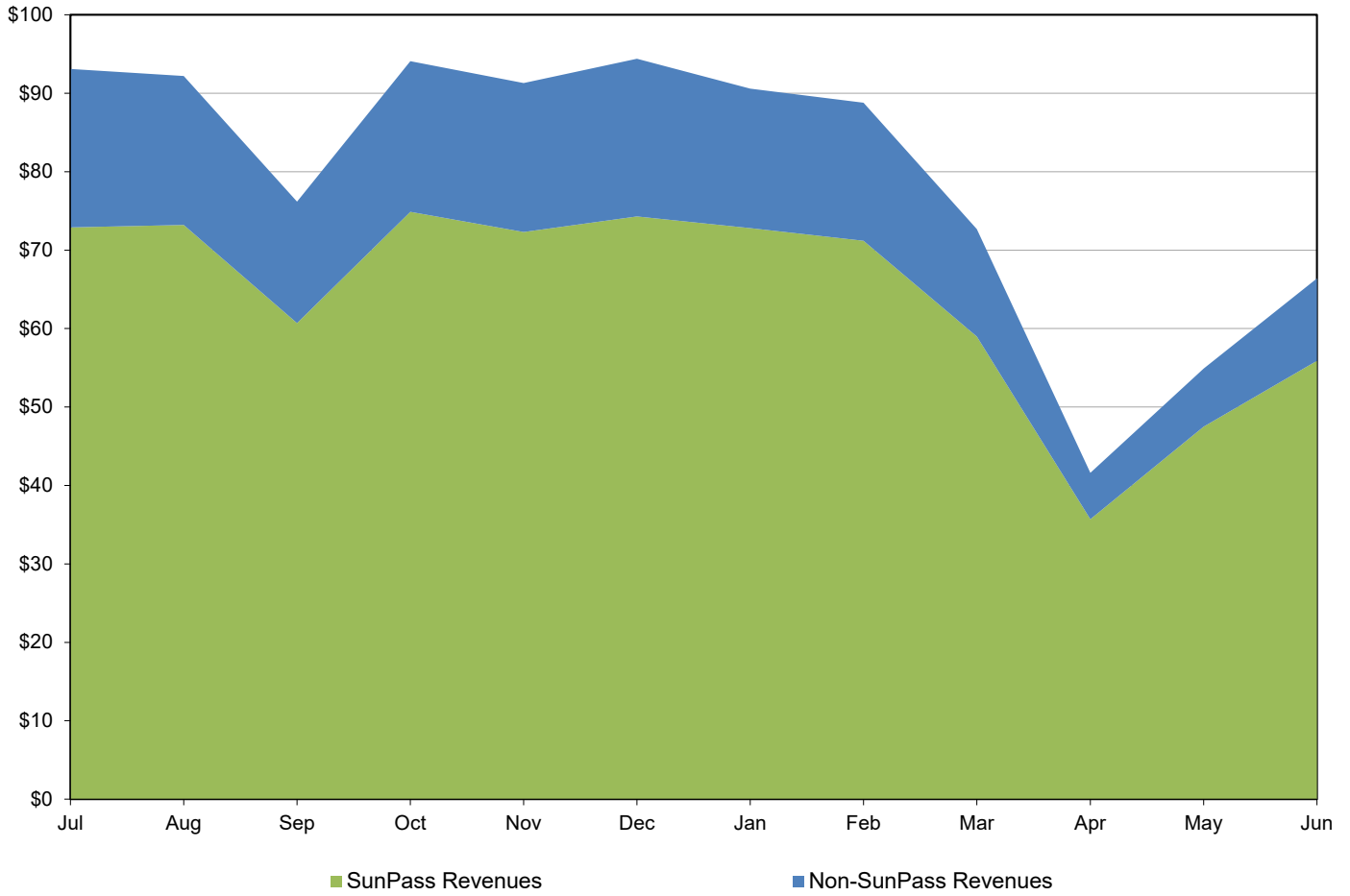
Source: Turnpike Enterprise Finance Office.

\* Reliance should be limited, for FY 2020, on these seasonal factor ratios due to the impacts of COVID-19 in the last five months of the year.

### SunPass Participaton by Month FY 2019 and FY 2020

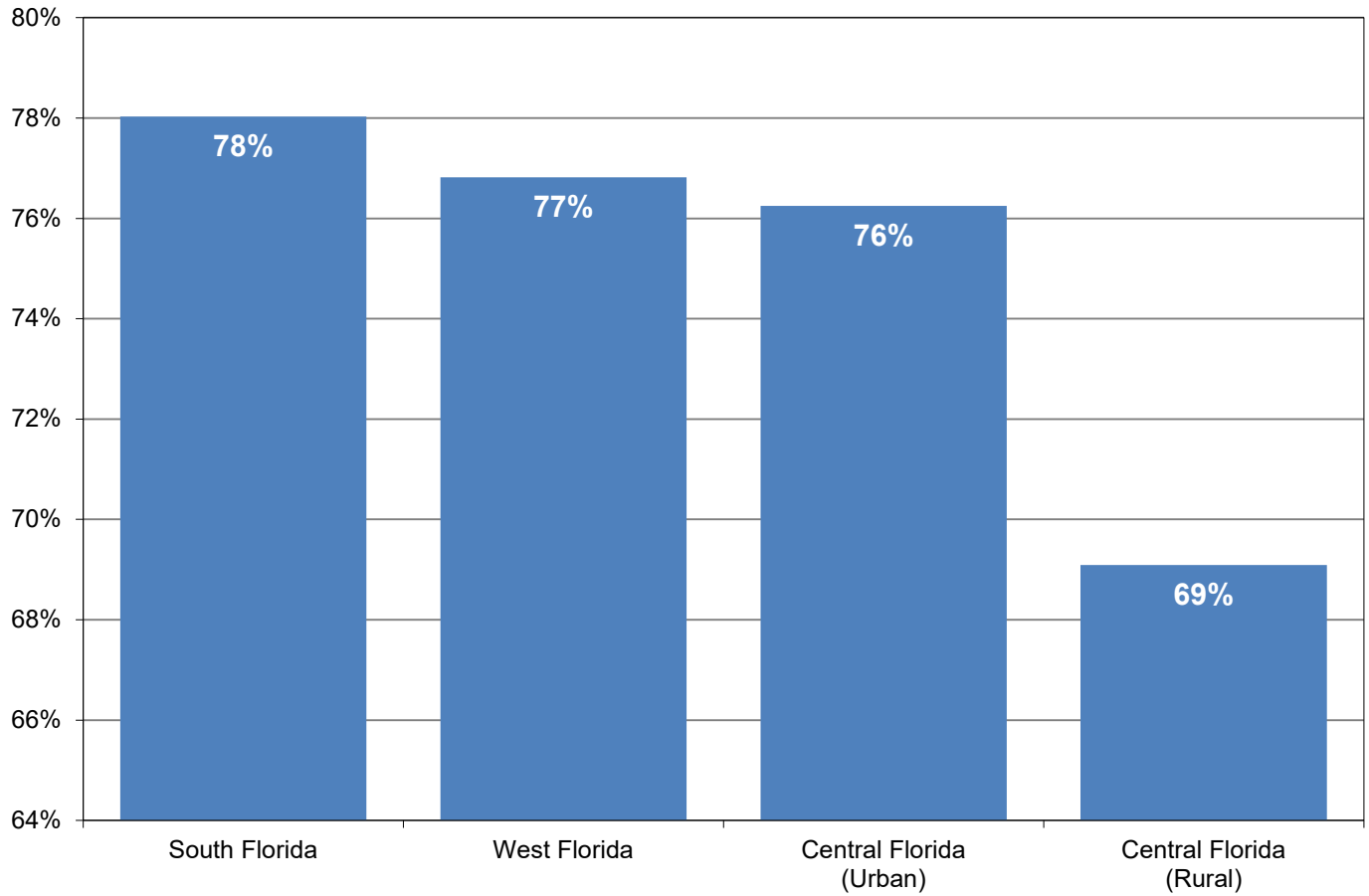


**Toll Revenue by Payment Type  
FY 2020  
(In Millions)**



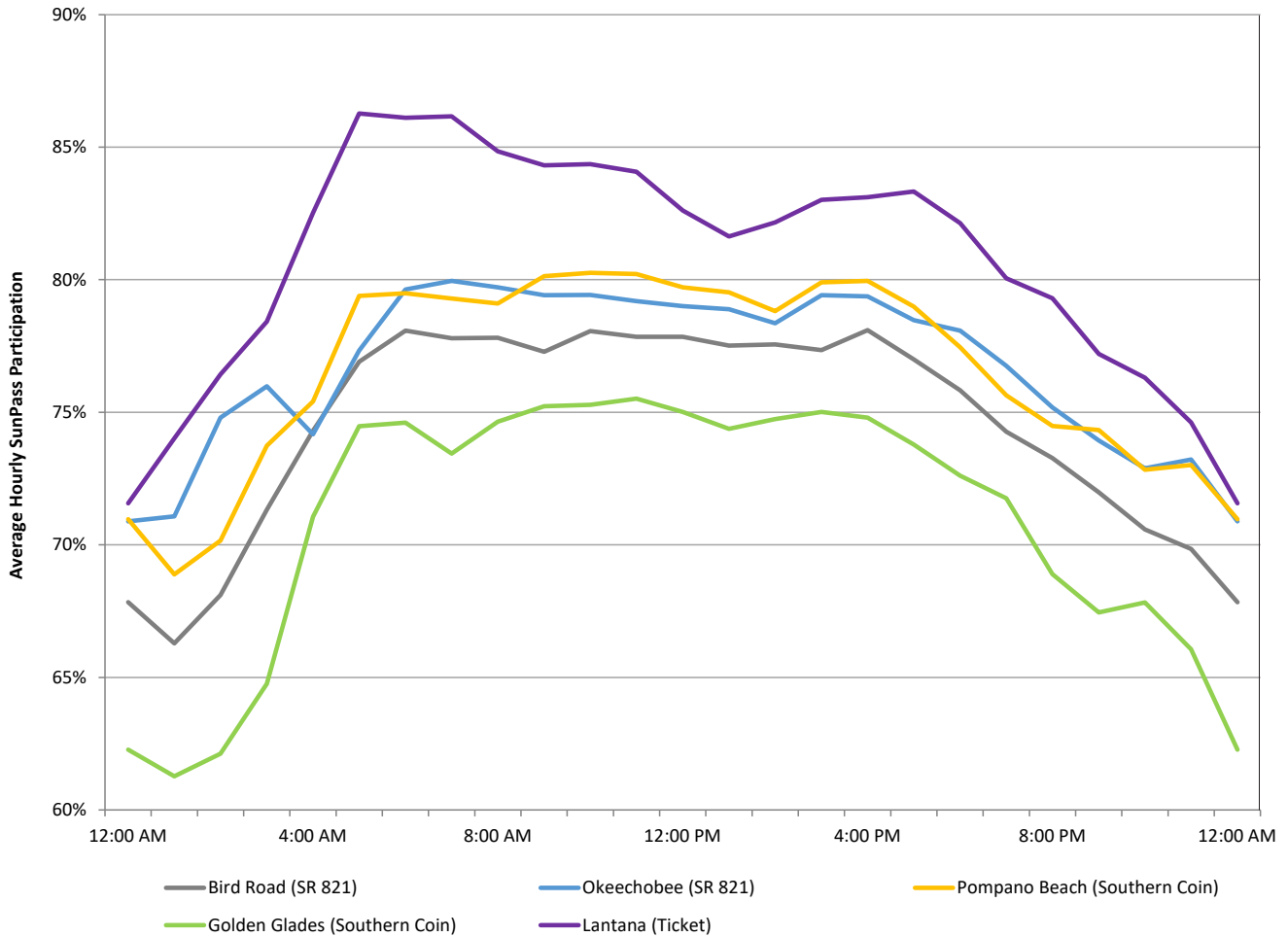
Toll revenue declined in September 2019 due to the toll suspensions issued for Hurricane Dorian. Declines in April through June 2020 mirror traffic declines due to the COVID-19 pandemic.

**Turnpike System  
SunPass Participation by Region  
FY 2020**



This graph depicts the average SunPass participation on the Turnpike System by region during FY 2020. As expected, SunPass participation in the region with mostly commuters was the highest (South Florida at 78 percent). On the other hand, SunPass participation in the tourist-oriented rural region of Central Florida was the lowest at 69 percent.

## Mainline Toll Plazas - Southern Facilities Typical Weekday Hourly SunPass Participation

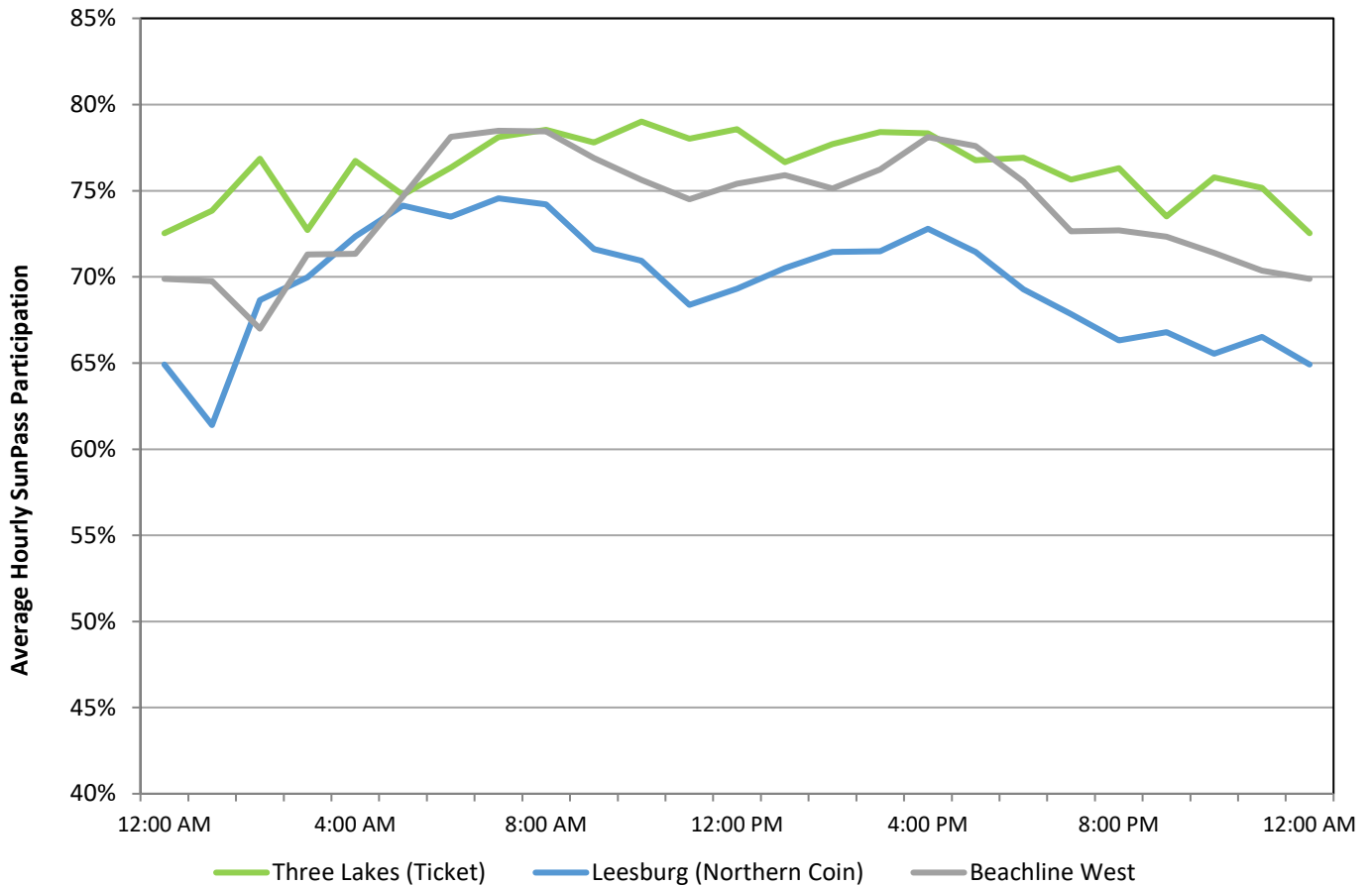


Source: Data obtained from Turnpike Enterprise Finance Office for the week beginning Monday, November 11, 2019

This graph shows the hourly SunPass participation on weekdays for a typical week at select mainline toll plazas on the southern components of the Mainline System. These components include SR 821, Southern Coin System, and the southern portion of the Ticket System (Lantana).

As depicted in the graph, SunPass participation on these facilities increased during the early morning and evening hours. Peak-hour participation at the Lantana and Okeechobee toll plazas reached 86 and 80 percent, respectively, in the morning. In general, the morning peak participation at all five toll plazas was higher than the evening peak participation.

## Mainline Toll Plazas - Northern Facilities Typical Weekday Hourly SunPass Participation



Source: Data obtained from Turnpike Enterprise Finance Office for the week beginning Monday, November 11, 2019.

This graph shows the hourly SunPass participation on weekdays for a typical week at select toll plazas on the northern components of the Mainline System. These components include the Northern Coin System, the northern portion of the Ticket System, and the Beachline West Expressway.

As depicted in the graph, SunPass participation at the Beachline West Expressway peaked at 79 percent during the morning peak hours. While the Leesburg toll plaza showed a significant rise in SunPass participation during the early morning peak hours, it dropped in the late morning hours with some increase in the afternoon. In contrast, SunPass participation remained relatively stable throughout the day at the Three Lakes toll plaza. This pattern confirms the fact that long distance travelers and tourists are the primary users of that toll plaza.