

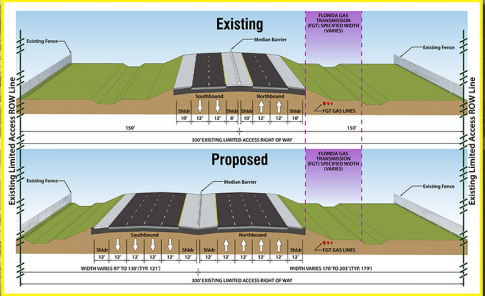
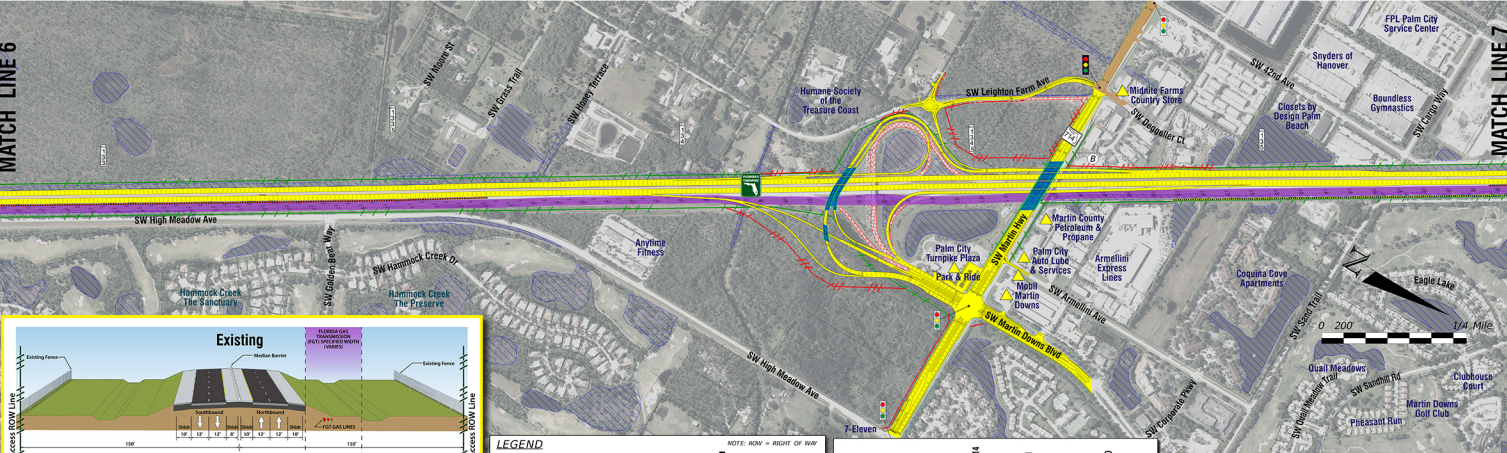


**MILEPOST 132.8 to 138.1
 (SEGMENT 4)**

Florida Project Identification (FPID) Number: 423374-1

MATCH LINE 6

MATCH LINE 7

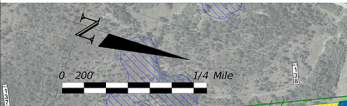


LEGEND

- PROPOSED NEW TRAFFIC SIGNAL
- EXISTING LIMITED ACCESS ROW LINE
- POTENTIAL NEW HOUSING
- POTENTIAL BUSINESS
- POTENTIAL RESIDENTIAL
- POTENTIAL MEDIUM/HIGH CONTAMINATION SITES
- TRAFFIC BARRIER WALL
- WETLANDS/OTHER SENSITIVE AREAS
- PROPOSED ROADWAY
- PROPOSED BRIDGE
- EXISTING BRIDGE
- OTHER PROJECTS (ROADS)
- POTENTIAL SHOULDER
- RAILROAD
- PAVEMENT REMOVAL
- WETLANDS/OTHER SENSITIVE AREAS
- PROPOSED ROADWAY
- PROPOSED BRIDGE
- EXISTING BRIDGE
- OTHER PROJECTS (ROADS)
- POTENTIAL SHOULDER

NOTE: ROW = RIGHT OF WAY

GENERAL FLIGHT DATE: MARTIN COUNTY FEBRUARY 2020, ST. LUCIE COUNTY JUNE 2019



MATCH LINE 7

MATCH LINE 8

