

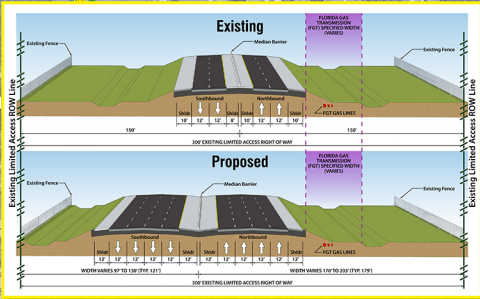
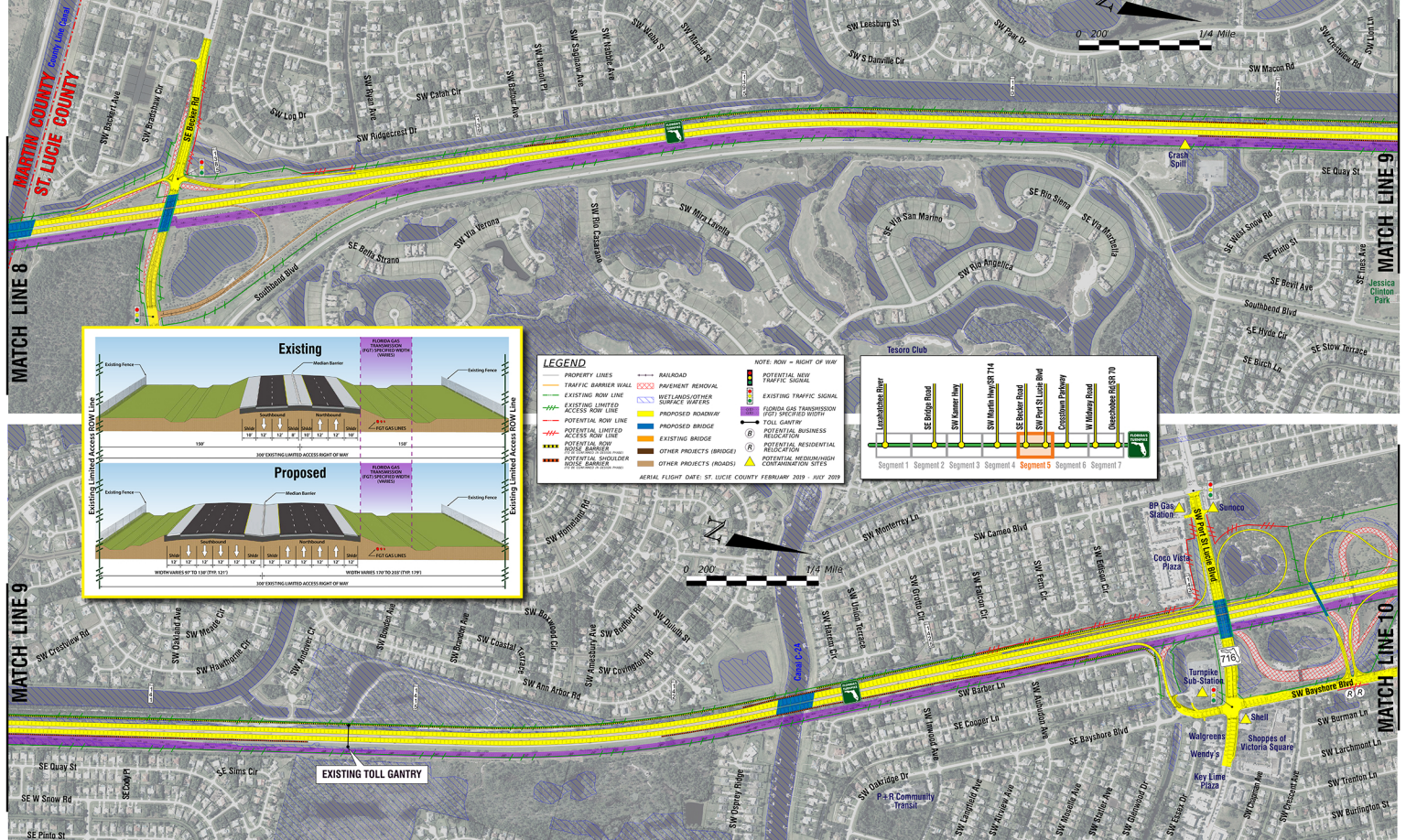


MILEPOST 138.1 to 143.4 (SEGMENT 5)



Financial Project Identification (FPID) Number: 423374-1

Efficient Transportation Decision Making (ETDM) Number: 14295



LEGEND

PROPERTY LINES	RAILROAD	NOTE ROW = RIGHT OF WAY
TRAFFIC BARRIER WALL	PAVEMENT REMOVAL	POTENTIAL NEW TRAFFIC SIGNAL
EXISTING ROW LINE	WETLANDS/OTHER SENSITIVE AREAS	EXISTING TRAFFIC SIGNAL
EXISTING LIMITED ACCESS ROW LINE	PROPOSED ROADWAY	FLORIDA GAS TRANSDUCTION POTENTIAL SITES
POTENTIAL ROW LINE	POTENTIAL BRIDGE	TOLL GANTRY
POTENTIAL LIMITED ACCESS ROW LINE	EXISTING BRIDGE	POTENTIAL BUSINESS RELOCATION
POTENTIAL ROW	OTHER PROJECTS (BRIDGES)	POTENTIAL RESIDENTIAL RELOCATION
POTENTIAL SHOULDER	POTENTIAL MEDIAN/SHOULDER CONSTRUCTION SITES	
DITCH OR BARRIER		

AERIAL PHOTO DATE: ST. LUCIE COUNTY FEBRUARY 2009 - JUNE 2009



EXISTING TOLL GANTRY