



Northern Turnpike Extension Citrus, Levy, Marion, and Sumter Counties FPID: 449743-2

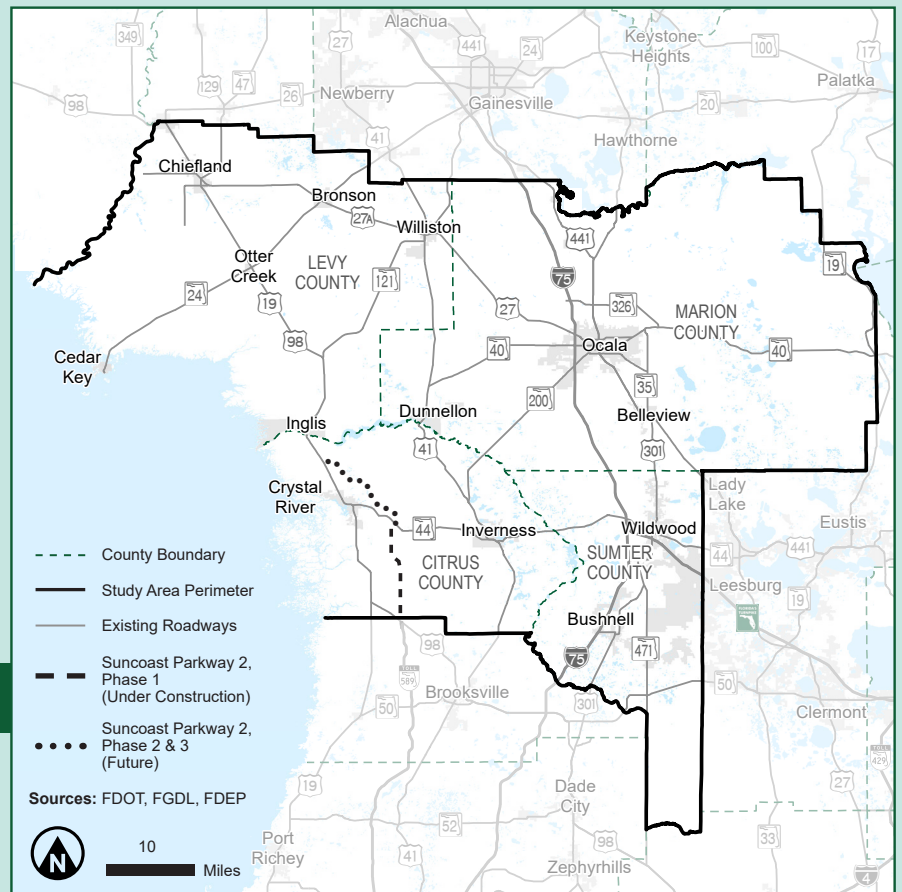
Project Description

The Northern Turnpike Extension project is a proposed extension of Florida's Turnpike from its northerly terminus in Wildwood to a logical and appropriate terminus as determined by the Florida Department of Transportation (FDOT).

The goals of the project are to:

- Enhance regional connectivity
- Address regional congestion and safety
- Accommodate increased travel demand
- Improve hurricane evacuation

For information, please visit:
www.floridasturnpike.com/NTE.



The study area includes Citrus, Levy, Marion, and Sumter counties.

Project Status

This project is currently in the Planning phase and is following the Alternative Corridor Evaluation (ACE) process.

The project is currently funded through the Project Development and Environment (PD&E) Study.

Contact Information

William Burke, PLA
 Project Manager for Florida's Turnpike Enterprise (HDR)
 Phone: 407-264-3142
william.burke@dot.state.fl.us