



Florida Department of
TRANSPORTATION



FLORIDA'S TURNPIKE ENTERPRISE CONSULTANT ACQUISITION PLAN (CAP) FY 2023





GENERAL ENGINEERING



AD NO	DESCRIPTION	EST \$ AMT	EST CONTRACT EXEC
TBD	TRANSPORTATION DEVELOPMENT #1	\$75.00M / 5 YR	TBD
TBD	TRANSPORTATION DEVELOPMENT #2	\$75.00M / 5 YR	TBD

Services

- A. Bond Resolution Responsibilities
- B. Planning and Environmental Management
- C. District Toll Studies and Statewide Managed Lanes Support
- D. Program and Project Management
- E. Public Information
- F. Preliminary Engineering and Design
- G. Right-of Way Management

Tentative Procurement Schedule

Planned Ad – TBD
Formal Ad – TBD
Final Selection – TBD
Contract Execution – TBD



CONTINUING SERVICES CONTRACT

AD NO	DESCRIPTION	EST \$ AMT	EST CONTRACT EXEC	POTENTIAL BDI?
23808	CONTINUING SERVICES CONTRACT – PD&E	\$5.0M	AUG 2022	No

- \$5M Contract over 5 Years
- Task Work Order Assignments based upon need
- No limit on TWO Assignments

AD NO	FPID	DESCRIPTION	EST \$ AMT	EST CONTRACT EXEC
23805	448068-1	PD&E WIDEN SUNCOAST PKWY(SR589) - S OF VAN DYKE RD TO SR52 (MP13-27)	\$3.0M	Apr 2023



PM	Anil Sharma (407) 264-3041
Ad No / FPID(s)	23805 / 448068-1
County/Counties	Polk
Estimated Contract \$	\$3.0M
Estimated Contract Execution	April 2023
Estimated Length of Contract	3 years
BDI	No

Project Description

The PD&E study for widening the Suncoast Parkway (SR 586) from South of Van Dyke Rd to SR 52 (MP13-27).

Anticipated Work Types:

Major 2.0, 3.3

Minor 4.1.1, 4.1.2, 4.2.1, 4.2.2, 6.3.1, 6.3.2, 6.3.3, 7.1, 7.2, 7.3, 8.1, 8.2, 8.3, 8.4, 9.1, 9.2, 9.4.1, 14.0, 15.0



PHASE 32 (DESIGN)



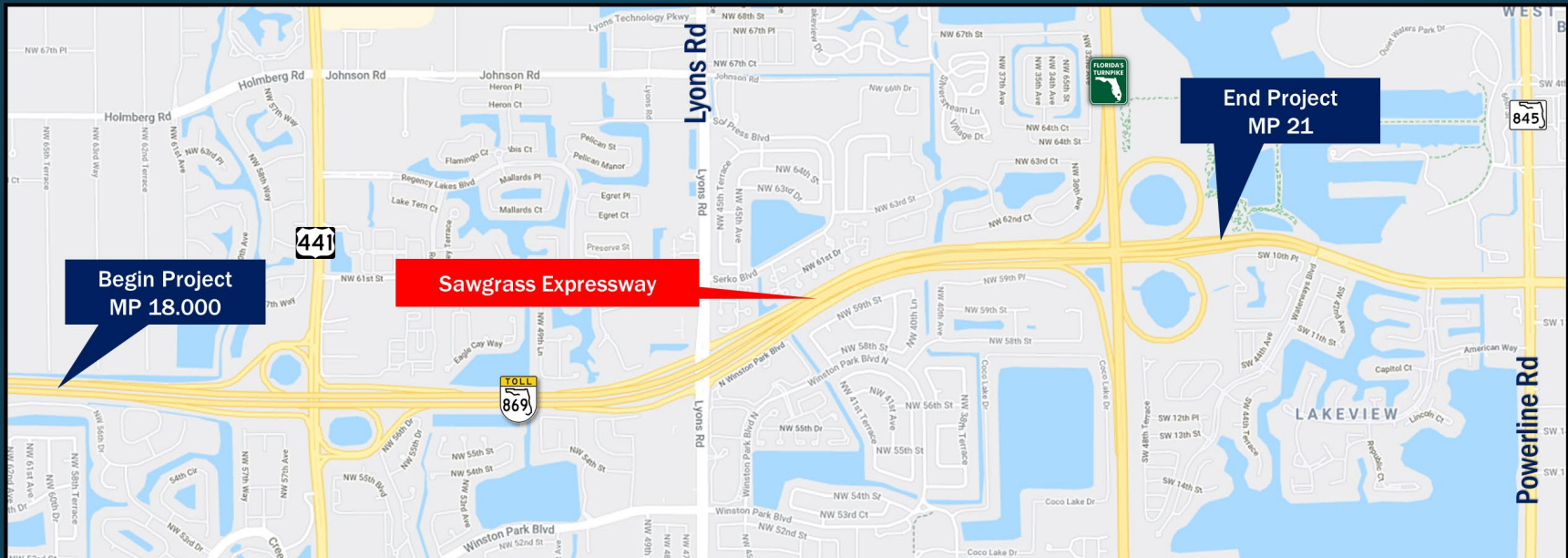
AD NO	FPID	DESCRIPTION	EST \$ AMT	EST CONTRACT EXEC	POTENTIAL BDI?
23801	442062-1	RESURFACE SAWGRASS XWAY IN BROWARD CNTY (MP 18 – 21.8)	\$1.52M	Aug 2022	No
23802	448524-1	BRIDGE REPLACEMENT – 890083 (SR 91) (MP 138) MARTIN COUNTY	\$2.5M	Aug 2022	No
23804	449688-1	RESURFACE POLK PARKWAY (SR 589) (MP 8 TO MP 17) POLK COUNTY	\$1.89M	Feb 2023	No
23806	449711-1	FIRST COAST EXPRESSWAY SAFETY ENHANCEMENTS (CLAY&DUVAL) (MP31-MP 45.7)	\$0.90M	Apr 2023	<i>Tentative</i>
23809	442764-3	SUNCOAST II (SR 589) – CR 495 TO US 19	\$10.0M	May 2023	No



Ad No 23801 / 442062-1

RESURFACE SAWGRASS XWAY IN BROWARD CNTY

MP 18 - 21



PM	Justin Relitz (407) 264-3304
Ad No / FPID(s)	23801 / 442062-1
County/Counties	Broward
Estimated Contract \$	\$1.52M
Estimated Contract Execution	August 2022
Estimated Length of Contract	20 months
BDI	No

Project Description

Milling, resurfacing, safety and design upgrade improvements for Sawgrass Expressway (SR 869) from Milepost 18 to 21 in Broward County.

Anticipated Work Types:

Major - 3.3, 4.1.1, 6.3.1, 7.1

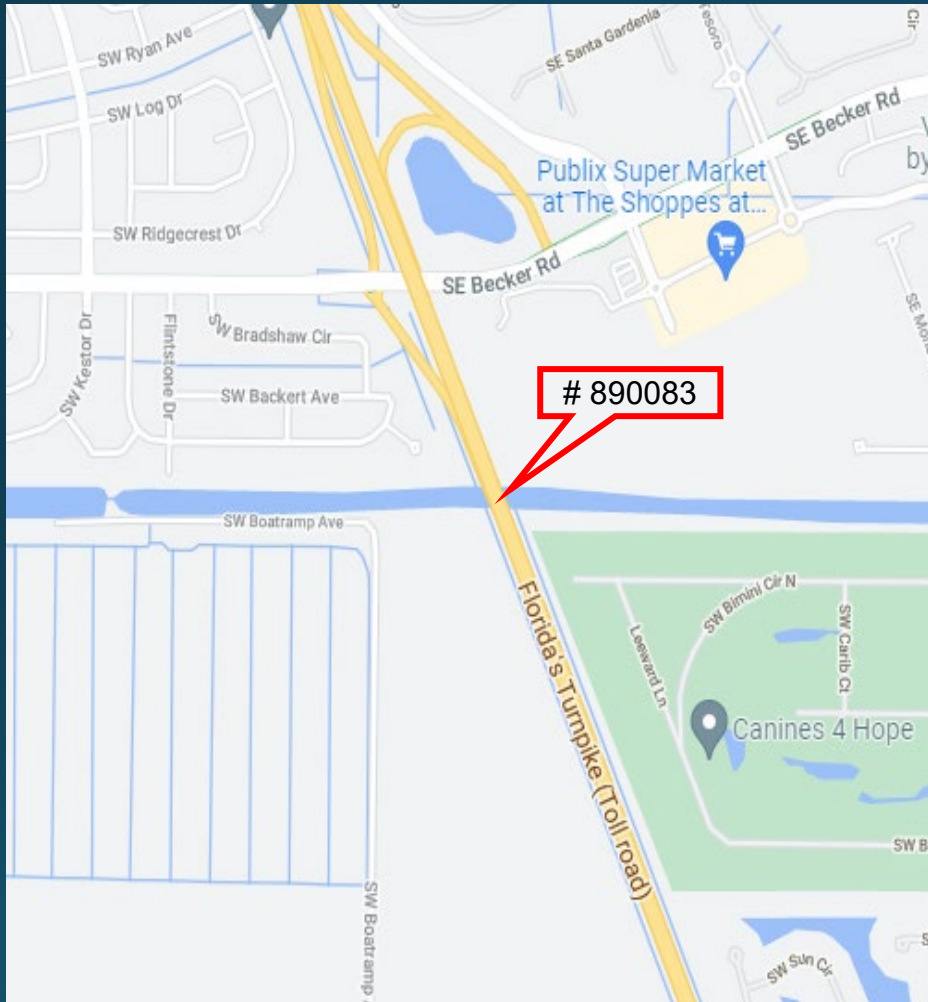
Minor - 7.2, 7.3, 15.0



Ad No 23802 / 448524-1

BRIDGE REPLACEMENT - 890083 (SR 91) (MP 138)

MARTIN COUNTY



PM	Suman Juluru (407) 547-3084
Ad No / FPID(s)	23802 / 448524-1
County/Countries	Martin
Estimated Contract \$	\$2.50M
Estimated Contract Execution	August 2022
Estimated Length of Contract	30 months
BDI	No

Project Description

Replace Bridge 890083 along Florida's Turnpike (SR 91) (MP 138) in Martin County.

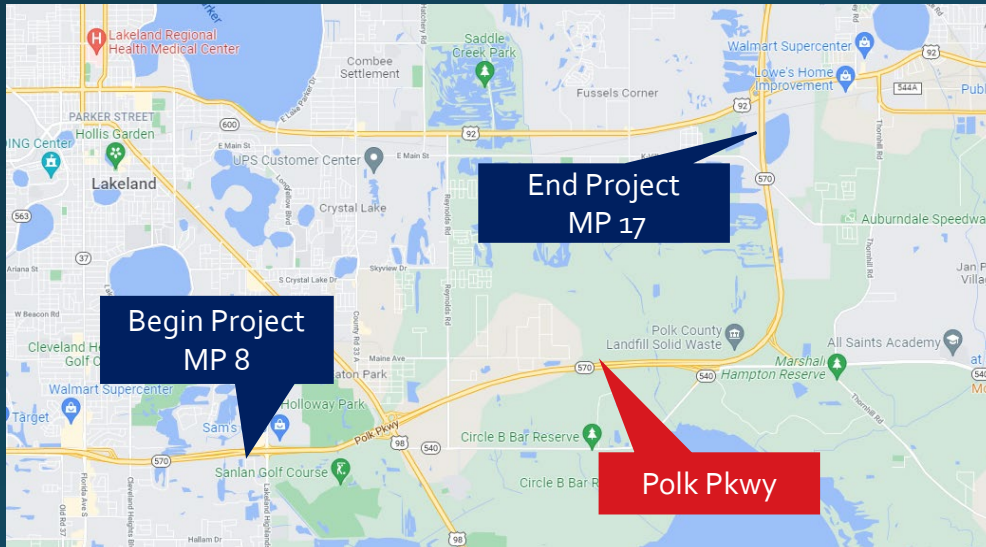
Anticipated Work Types:

Major - 3.3, 4.1.2

Minor - 3.1, 3.2, 4.1.1, 6.3.1, 6.3.2, 6.3.3, 7.1, 7.2, 8.1, 8.2, 8.3, 8.4, 9.1, 9.2, 9.4.1



Ad No 23804 / 449688-1 RESURFACE POLK PARKWAY (SR 589) (MP 8 TO MP 17) POLK COUNTY



PM	Ruby Monsalve (407) 264-3005
Ad No / FPID(s)	23804 / 449688-1 / 2
County/Counties	Polk
Estimated Contract \$	\$1.9M
Estimated Contract Execution	4/12/2023
Estimated Length of Contract	14 months
BDI	No

Project Description

Polk Pkwy (SR 570) Resurfacing and safety improvements from MP 8-17 in Polk County

Anticipated Work Types:

Major - 3.3

Minor - 3.1, 4.1.1, 4.1.2, 6.3.1, 6.3.2, 6.3.3, 7.1, 7.2, 7.3, 8.1, 8.2, 8.3, 8.4, 9.1, 9.2



Ad No 23806 / 449711-1

FIRST COAST EXPRESSWAY SAFETY ENHANCEMENTS (CLAY & DUVAL)(MP31-MP45.7)



PM	Snehal Ambare (407) 264-3414
Ad No / FPID(s)	23806 / 449711-1
County/Countries	Clay & Duval
Estimated Contract \$	\$0.90M
Estimated Contract Execution	April 2023
Estimated Length of Contract	15 months
BDI	Yes

Project Description

First Coast Expressway Safety Enhancements (Clay & Duval) (MP31-45.7)

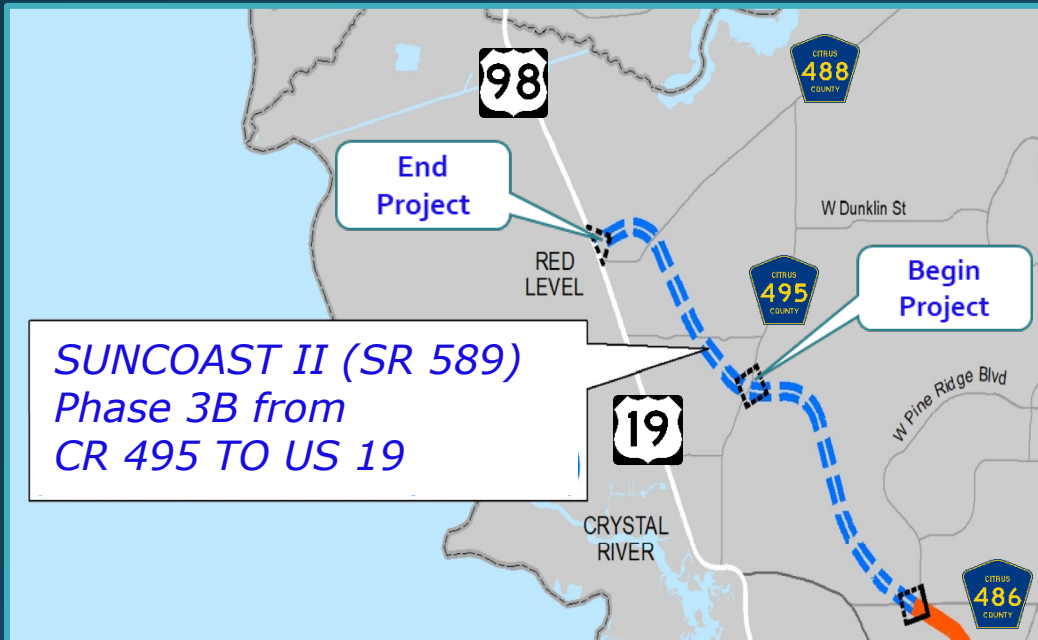
Anticipated Work Types:

Major - 3.3

Minor - 3.1, 4.1.1, 4.1.2, 6.3.1, 6.3.2, 6.3.3, 7.1, 8.1, 8.2, 8.3, 9.1, 9.2



Ad No 23809 / 442764-3 SUNCOAST II (SR 589) CR 495 TO US 19 (PH 3B)



PM	Anil Sharma (407) 264-3041
Ad No / FPID(s)	23809 / 442764-3
County/Counties	Citrus
Estimated Contract \$	\$10.00M
Estimated Contract Execution	May 2023
Estimated Length of Contract	4 years
BDI	No

Project Description :

Final design for all design elements on new alignment for 4.8 miles on northern segment of Suncoast Parkway (SR 589) from CR 495 to US 19 (Segment 3B).

Anticipated Work Types:

Major - 3.3

Minor - 2.0, 4.1.1, 4.1.2, 5.4, 6.1, 6.3.1, 6.3.2, 6.3.3, 7.1, 7.2, 7.3, 8.1, 8.2, 8.3, 8.4, 9.1, 9.2, 9.4.1, 14.0, 15.0



PHASE 62 (CEI)



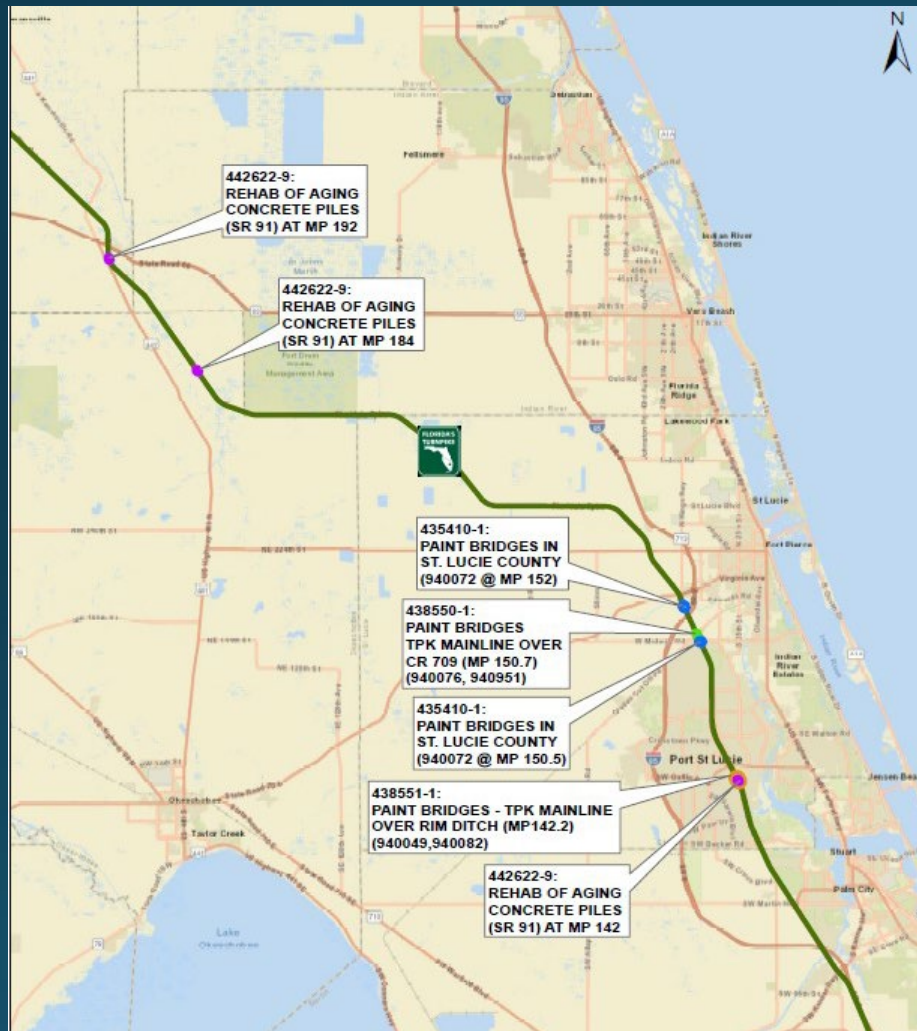
AD NO	FPID	DESCRIPTION	EST \$ AMT	EST CONTRACT EXEC	POTENTIAL BDI?
23810	438551-1 438550-1 435410-1 442622-9	Bridge Painting, 142 (940049, 940082); Painting 150 (940076, 940951); Bridge Painting, 152, (940072 & 940050) & Rehab of Aging Prestressed Piles - 142, 184, 192	\$0.98M	July 2022	N
23811	428972-1 431123-2	Bridge Painting Polk, Multi, Paint Bridges 2 Polk County	\$1.17M	Aug 2022	N
23812	442764-1	Suncoast 2 Phase 2	\$6.90M	Aug 2022	N
23813	442061-1 446024-1 449692-1	Resurface & Safety Improvements, Broward, MP 57.3-65.2 & Resurface & Safety Improvements Broward 65.2-71.0; Coconut Creek Interchange Improvements MP 67	\$5.50M	Sep 2022	N
23814	441719-1 441224-6	Resurface & Safety Improvements Osceola 198.5-207; Kissimmee Park Rd TSM&O	\$2.70M	Oct 2022	N
23815	440897-2	Central Polk Parkway	\$15.00M	Nov 2022	N
23816	449340-1 449334-1	Veterans Improvements for Bridge Approaches & Departures & Eisenhower Blvd & Mem Highway Signal Replacement	\$0.65M	Jan 2023	Y
	445885-1	Resurface & Safety Improvements Veterans Spur MP 0-3	\$0.52M	Jan 2023	Y
23817	449253-3 442618-2	System Wide Queue Warning SR 91, 589, 528, 417, 821 Replace Great System & Hexfoam Crash Cushions (SR417)	\$1.20M	May 2023	N



CEI Ad No 23810

438550-1, 438551-1, 435410-1, 442622-9

BRIDGE PAINTINGS AND REHAB OF AGING CONCRETE PILES



PM:	Pablo Rodriguez (646) 522-4613
AD NO / FPID (S)	23810 / 438551-1, 438550-1, 435410-1, 442622-9
County/Counties	St. Lucie, Okeechobee, Osceola
Estimated CEI Contract Amount	\$0.90M
Estimated CEI Contract Execution	July 2022
BDI	YES

435410-1: PAINT BRIDGES MP 150.5 and MP 152.5:

Turnpike (SR 91) over Ten Mile Creek (Br # 940072) and Midway Road (CR 712) over SR 91 (Br # 940050);

438550-1: PAINT BRIDGES MP 150.7:

Turnpike (SR 91) NB (Br # 940076) and SB (Br # 940951) over Glades Cut Off Road (CR 709) & FEC Railroad;

438551-1: PAINT BRIDGES MP 142.2:

SR 91 NB (Br # 940082) and SB (Br # 940049) over Rim Ditch (C-24 Canal)

442622-9: REHAB OF AGING CONCRETE PILES AT MP 142, 184, AND 192:

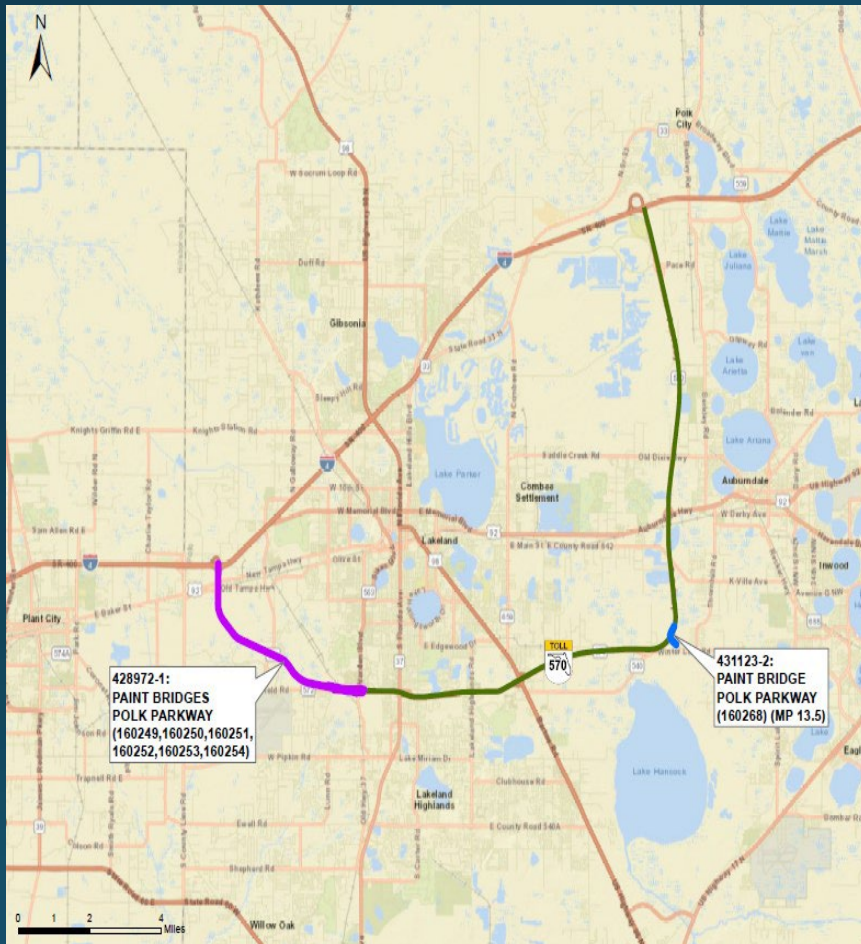
Rehabilitation of concrete piles using pile jackets and scour countermeasures for 6 bridges along SR 91. The bridges cross the C-24 canal, Jim Green Creek and an Outfall Ditch



CEI Ad No 23811

428972-1, 431123-2

BRIDGE PAINTINGS ON POLK PARKWAY



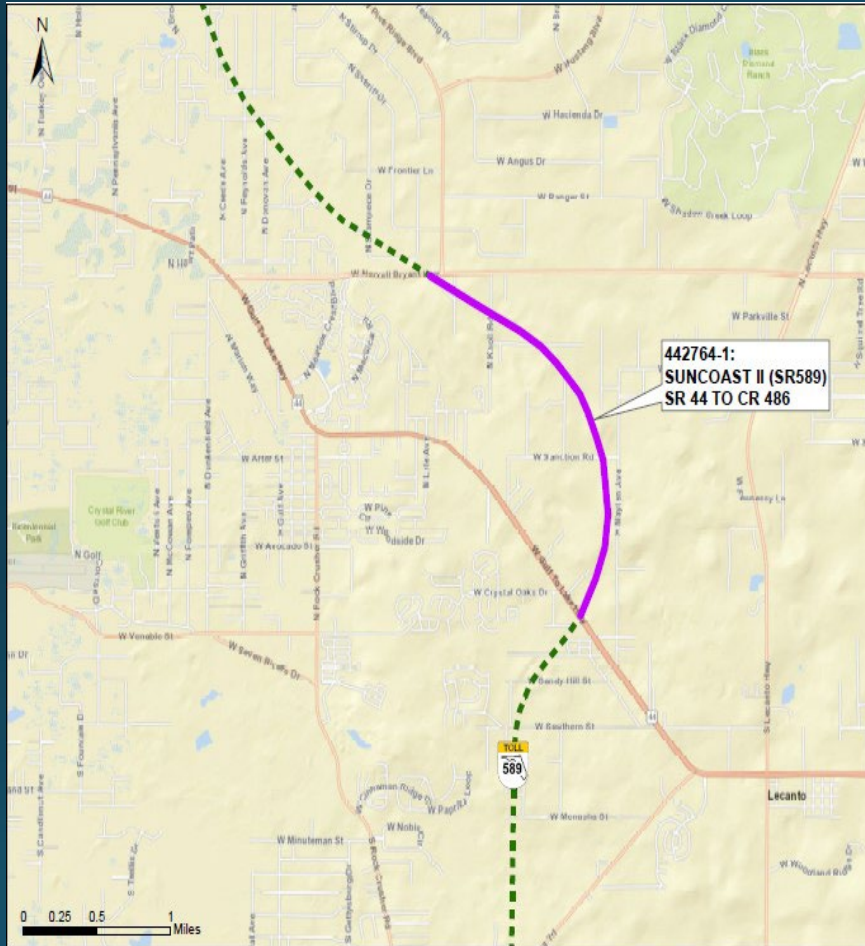
PM:	TBD
AD NO / FPID (S)	23811 / 428972-1, 431123-2
County/Counties	Polk
Estimated CEI Contract Amount	\$1.17M
Estimated CEI Contract Execution	August 2022
BDI	NO

428972-1: PAINT BRIDGES - POLK PKWY(160249,160250,160251, 160252,160253,160254) & 431123-2: PAINT BRIDGE - POLK PARKWAY (160268) (MP 13.5).

Repainting of the structural steel components (single span and 2-span steel plate I girders) and the recoating of concrete surfaces of the bridges and adjacent walls. 160249 and 160252 - SR 570 S. and N. Frontage Rd over CSX RR, Beaker Rd and Wilkinson Rd (MP 5.1); 160250 and 160251 - SR 570 WB and EB over CSX RR, Beaker Rd and Wilkinson Rd (MP 5.1); 160253 and 160254- SR 570 WB and EB over Harden Blvd (MP 5.5); 160268 - SR 570 EB over Ramp A (MP 13.5)



CEI Ad No 23812 442764-1 SUNCOAST PKWY 2 – SR 44 TO CR 486



PM:	TBD
AD NO / FPID (S)	23812 / 442764-1
County/Counties	Citrus
Estimated CEI Contract Amount	\$6.90M
Estimated CEI Contract Execution	August 2022
BDI	NO

Suncoast Parkway 2 (SR 589) – SR 44 TO CR 486

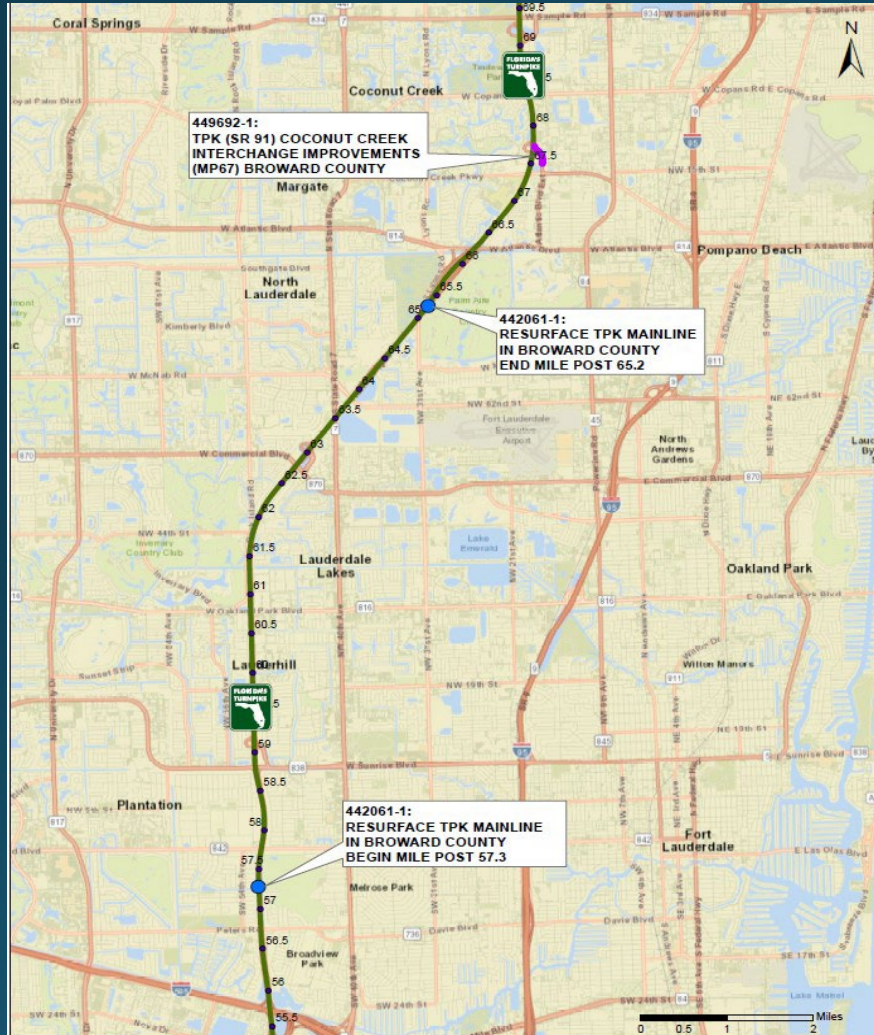
Phase 2 is a new four-lane (two lanes in each direction), limited access tolled roadway that will extend the Suncoast Parkway northward from SR 44 to CR 486, approximately three miles. The project includes a multi-use recreational trail along the west side of the alignment that will be an extension of the existing multi-use trail. Completion of the interchange at SR 44 and signals at SR 44 and CR 486 with the Suncoast Parkway. The proposed right of way for the road will be 300 feet in width and the right of way for the multi-use trail will be 50 feet wide. Open drainage ditches will be constructed along both sides of the roadway.



CEI Ad No 23813

442061-1, 446024-1, 449692-1

RESURFACING BROWARD CNTY MP 57.3 -65.2



PM:	Pacifico Castillo (954) 934-1118
AD NO / FPID (S)	23813 / 442061-1, 446024-1, 449692-1
County/Countries	Broward
Estimated CEI Contract Amount	\$5.50M
Estimated CEI Contract Execution	September 2022
BDI	NO

442061-1,-2 Resurface the Turnpike Mainline (SR 91) from MP 57.3 to MP 65.2

The project includes milling and resurfacing, safety improvements, and signing and pavement marking improvements.

446024-1,-2 Resurface the Turnpike Mainline / SR 91 from MP 65.2 to MP 71.0

The project includes milling and resurfacing, safety improvements, and signing and pavement marking improvements

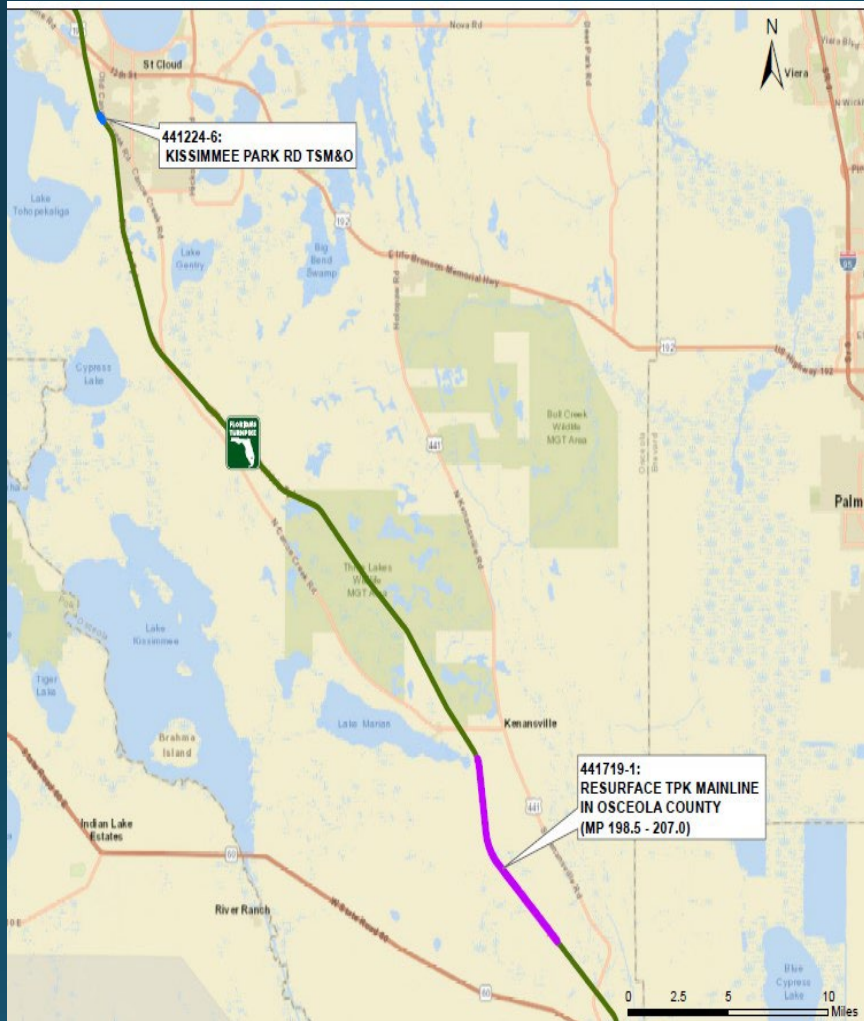


CEIAd No 23814

441719-1, 441224-6

RESURFACING OSCEOLA CNTY MP 198.5 – 207.0

KISSIMMEE PARK ROAD TSM&O



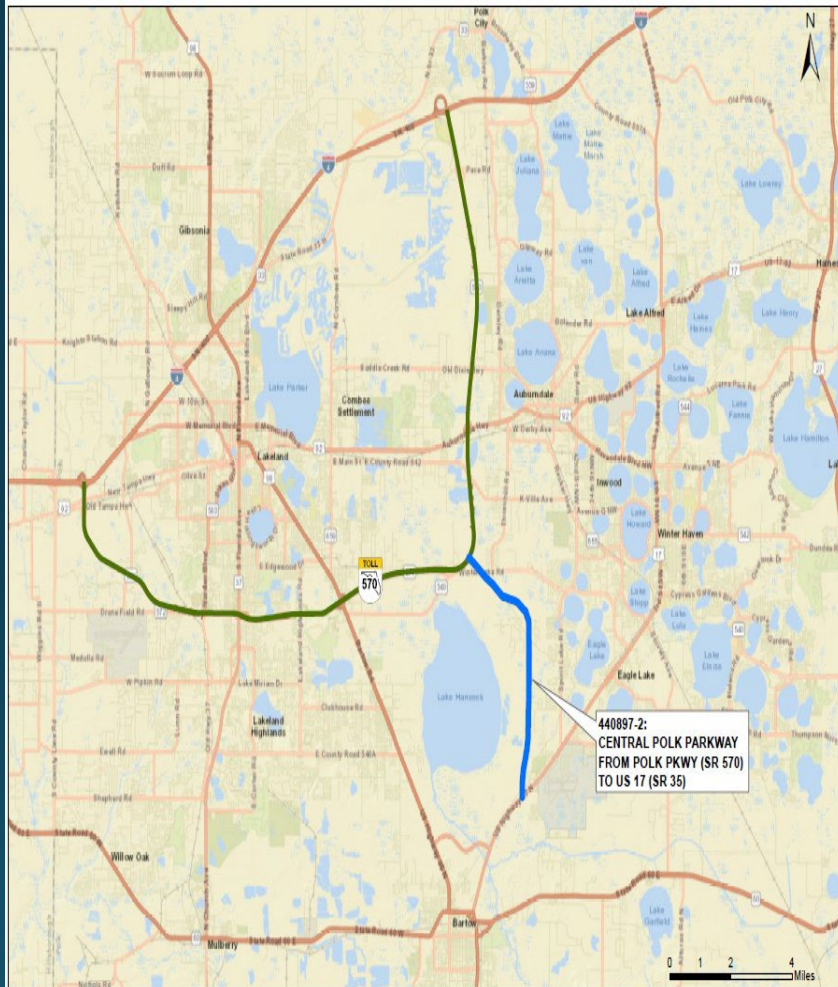
PM:	TBD
AD NO / FPID (S)	23814 / 441719-1, 441224-6
County/Counties	Osceola
Estimated CEI Contract Amount	\$2.70M
Estimated CEI Contract Execution	October 2022
BDI	NO

441719-1 /2: RESURFACE TPK MAINLINE IN OSCEOLA CNTY (MP 198.5 - 207.0)

This project will reconstruct, mill & resurface, and provide roadside & safety improvements for the Turnpike Mainline (SR 91) from Mile Post 198.5 to MP 207.0 in Osceola County (92470). Improvements include pavement milling & surfacing of travel lanes & shoulders, isolated full depth pavement rehabilitation, Cross Slope/Superelevation Correction, Inside Shoulder Widening, Side Slope Repairs, Median Opening removal, Guardrail Replacement, Bridge Expansion Joint Removal & Replacement, Culvert Repairs, Misc. Drainage, Signing & Pavement Marking Replacement, and Misc. ITS Improvements.

441224-6: KISSIMMEE PARK RD TSM&O

This TSM&O project at existing Kissimmee Park Rd (KPR) will improve traffic operations of this interchange in the interim condition. This project restripes the TPK SB exit ramp at KPR to right only and shared right and left turn lanes. It closes the entry from KPR EB to TPK NB Entrance ramp, adds a left turn lane on NB Old Canoe Creek Rd, and adds a signalized U-turn at the Fire Station intersection. Scope of work also includes landscaping component in the interim phase. These improvements will remain in operation until the construction of the new Nolte Rd Interchange under FPID 441224-2&4. Portion of these improvements will be removed along with the removal of existing KPR interchange under the Design-Build project FPID 441224-2&4.



PM:	TBD
AD NO / FPID (S)	23815 /440897-2
County/Counties	Polk
Estimated CEI Contract Amount	\$15.00M
Estimated CEI Contract Execution	November 2022
BDI	NO

440897-2: CENTRAL POLK PARKWAY - FROM POLK PKWY (SR 570) TO US 17 (SR 35)

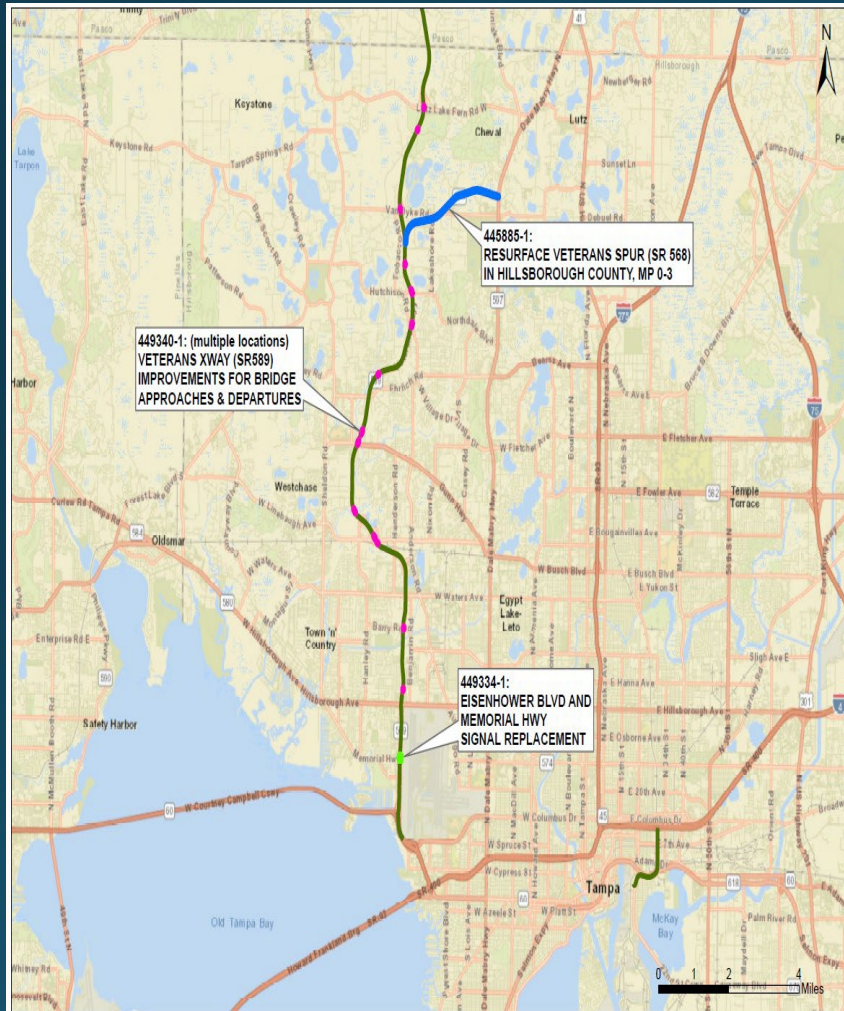
The Central Polk Parkway is a new facility linking the Polk Parkway (SR 570) to US 17 (SR 35) with an at-grade intersection at US 17 that will serve the future traffic needs of Polk County. This four-lane, limited access tolled roadway (about 6.5 miles) will provide better options for moving people and goods, create less congestion on existing area roadways, reduce commercial traffic through Bartow, improve regional connectivity, better emergency evacuation times, and accommodate future population growth and land use.



CEI Ad No 23816

449340-1, 449334-1, 445885-1

VETS BRIDGE IMPROVEMENTS RESURFACING VETS SPUR MP 0-3



PM:	TBD
AD NO / FPID (S)	23816 / 449340-1, 449334-1, 445885-1
County/Counties	Hillsborough
Estimated CEI Contract Amount	\$0.65M
Estimated CEI Contract Execution	January 2023
BDI	YES

449340-1: Veterans Improvements for Bridge Approaches & Departures:

This project improves rideability in sections 4 and 5 of the Veterans Expressway focusing on the transitions from the roadway to the approach slab and/or the approach slab to the bridge deck.

449334-1: Eisenhower Blvd & Memorial Highway Signal Replacement: *This project replaces the signalization infrastructure of the Eisenhower Blvd/Memorial Hwy interchange with SR 589.*

445885-1/-2 Resurface & Safety Improvements Veterans Spur MP 0-3:

This project provides milling and resurfacing and roadside and safety improvements for the Veterans Spur (SR 568) from milepost 0-3.

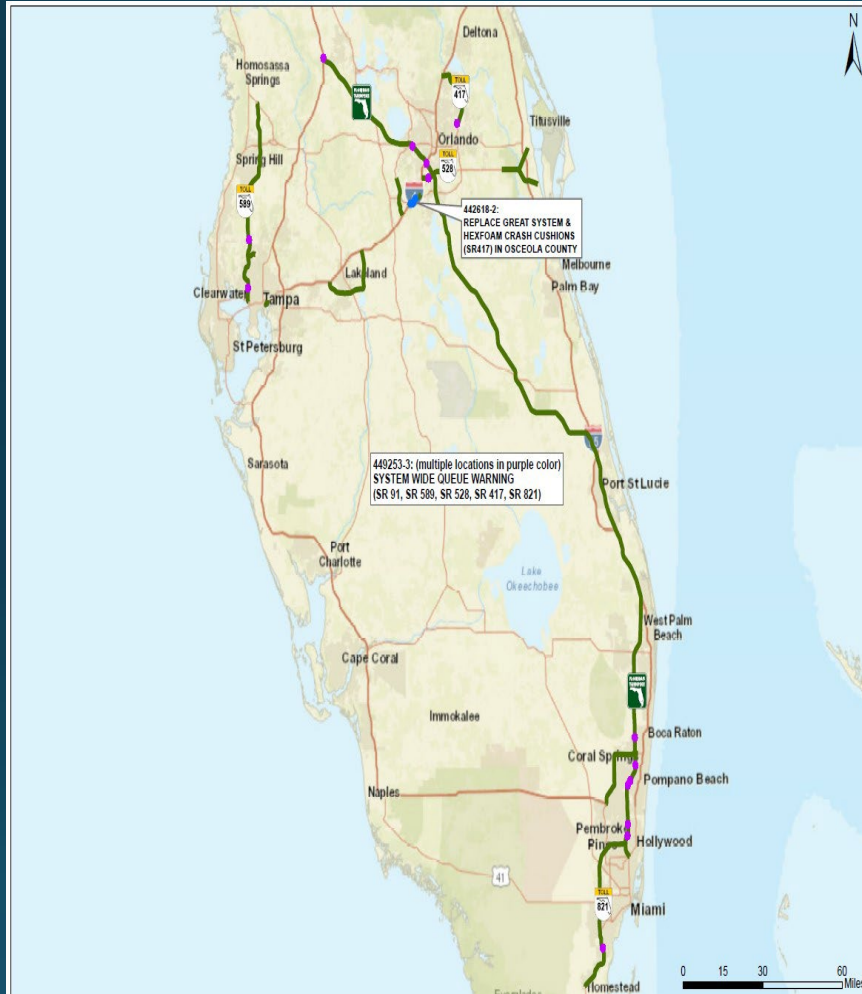


CEI Ad No 23817

449253-3, 442618-2

QUE WARNING SYSTEM (STATEWIDE LOCATIONS)

REPLACE HEXFOAM CRASH CUSHIONS



PM:	TBD
AD NO / FPID (S)	23817 / 449253-3, 442618-2
County/Counties	Miami-Dade, Broward, Palm Beach, Orange, Osceola and Sumter
Estimated CEI Contract Amount	\$1.20M
Estimated CEI Contract Execution	May 2023
BDI	NO

449253-3: SYSTEM WIDE QUEUE WARNING (SR 91, SR 589, SR 528, SR 417, AND SR 821).

The purpose of this project is to install DMSs and MVDs at about 12 locations on the Turnpike system, and the DMSs will give motorists advance warning for backups at the exits.

442618-2: REPLACE GREAT SYSTEM & HEXFOAM CRASH CUSHIONS (SR417) :

This project involves replacing fourteen (14) crash cushions on SR 417 in the vicinity of 5 different toll plazas on the mainline or on ramps. It spans from Milepost 0.2 thru 3.6 on SR 417.



Tentative FY 2024 Consultant Acquisitions & Design Build



Consultant Acquisitions

AD NO	FPID	DESCRIPTION
TBD	445883-1/-2 445884-1/-2	RESURFACE SOUTHERN CONNECTOR EXT. (SR 417) IN OSCEOLA COUNTY, MP 0-4 & RESURFACE SOUTHERN CONNECTOR EXT. (SR 417) IN ORANGE COUNTY, MP 4-6
TBD	447702-1/-2	RESURFACE SUNCOAST (SR 589) IN PASCO COUNTY, MP 17.5-28.5
TBD	449687-1	RESURFACE SEMINOLE EXPRESSWAY (SR 417) (MP 50 TO MP 55) SEMINOLE CNTY
TBD	449465-1	WIDEN EB SR 528 EXIT RAMP TO JOHN YOUNG PKWY (MP3)

Design-Build Projects

AD NO	FPID	DESCRIPTION
TBD	441224-2/-4	KISSIMMEE PARK ROAD INTERCHANGE IMPROVEMENTS (MP 240) WIDEN TPK (SR 91) (MP 239-242) & NEW NOLTE ROAD INTERCHANGE
TBD	417545-1	WIDEN SEMINOLE XWAY FROM ALOMA AVE TO SR 434 (MP 38 - 44) (4TO8 LANES)



IMPROVEMENTS AND CHANGES



1. Automated Meeting Registration
2. External SharePoint Scope Collaboration



Automated Registration Process

Automated registration process for Project Specific/Technical Panel Sessions and General Informational Meetings

<https://floridasturnpike.com/business-opportunities/consultant-corner/technical-panel-sessions/>

Once granted access, firms can make a new reservation, modify or cancel an existing reservation for a Technical Panel Session or General Informational Meeting online

Instructions for requesting access is provided on the website



Online Scope Collaboration

NEW



Scope development and coordination for new and existing contracts between FTE and Consultants is now online.

This supports our condensed procurement process of reducing time needed between consultant selection and contract execution by eliminating back-and-forth emails.

<https://floridasturnpike.com/business-opportunities/consultant-corner/>





HELPFUL WEB LINKS



FDOT: Procurement - Marketing – CAP

<https://www.fdot.gov/procurement/cap.shtm>

FDOT: Procurement – Advertisements

<https://www.fdot.gov/procurement/Advertisements.shtm>

GIS - Geographic Information Systems - Work Program
Maps

<https://dotstpgisp-h1.tp.dot.state.fl.us/GEVT/>

Florida's Turnpike Enterprise

<https://floridasturnpike.com/>

FTE Design Website

<http://floridasturnpike.com/design.html>



REQUESTS FOR INFORMATION



Public Records Requests for ALL Procurements

PRIOR TO Formal Advertisement
Stephanie Hall (407) 264-3171
Stephanie.Hall@dot.state.fl.us

AFTER Formal Advertisement
Professional Services Unit (PSU)
tp.profserv@dot.state.fl.us

* Assigned Contract Analyst information will be on the advertisement



CONTACT INFORMATION



- Christina Colon, P.E. – Director of Transportation Development
- Stephanie Sharp, P.E. – District Program Management Administrator
- Moataz “Mo” Hassan, P.E. – District Design Engineer
- Susan Sadighi, P.E. – District Program Administration Manager
- Brianna Myers – Production Manager
- Karen Akers, P.E. – CEI Manager