

Project Needs



Enhance safety

- Increased congestion will lead to an increase in crashes
- Additional capacity is needed to accommodate safe weaving and merging between SR 429 and I-4



Accommodate traffic demands

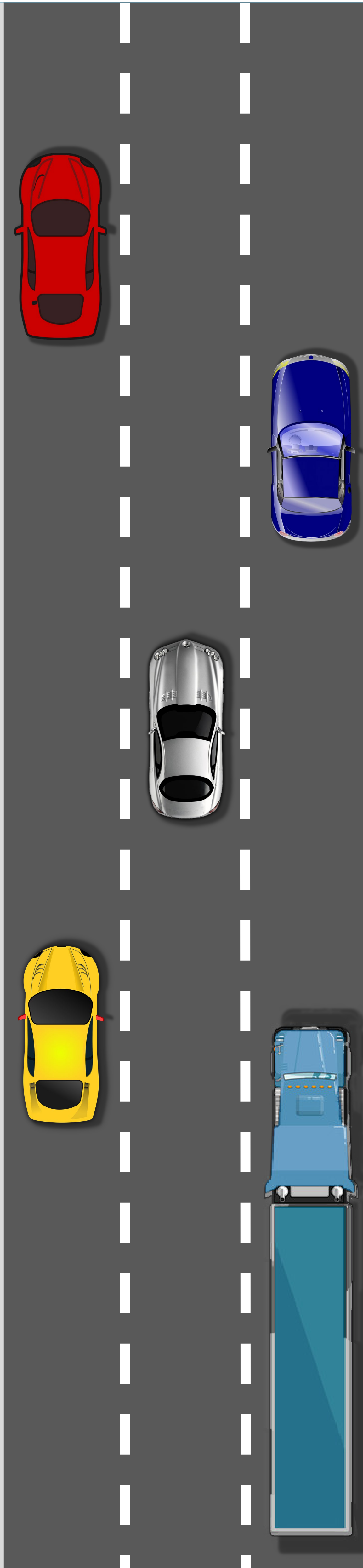
Corridor Traffic Demands by 2050:

- Traffic on SR 429 has been increasing by more than 10% per year within the study limits
- 8 lanes will be needed by 2050 to accommodate projected growth



Improve travel time reliability

Recent studies indicate there is recurring congestion during the PM peak travel hours. The proposed improvements will benefit traffic operations to reduce congestion.



Enhance and maintain Central Florida's economic and employment vitality

Residents and workers will face severe congestion affecting the economic viability of the Central Florida economy.



Enhance emergency response and evacuation

This corridor is critical for facilitating emergency evacuations.