



## Florida Department of Transportation

RON DESANTIS  
GOVERNOR

Turkey Lake Service Plaza  
Mile Post 263 | Bldg. #5315  
P.O. Box 613069, Ocoee, Florida 34761

JARED W. PERDUE, P.E.  
SECRETARY

### MEDIA ADVISORY

**For Immediate Release**  
March 21, 2023

**Contact: Kerry French**  
(407) 264-3908 [Kerry.French@dot.state.fl.us](mailto:Kerry.French@dot.state.fl.us)

## Florida's Turnpike Enterprise Hosts Ground Breaking for Central Polk Parkway/SR 570B

*New Roadway from Winter Lake Road/SR 540 to US 17/SR 35*

- WHAT:** Ground breaking event to mark the construction of Central Polk Parkway/SR 570B from Polk Parkway/SR 570 at Winter Lake Road/SR 540 to US 17/SR 35. This \$257 million project will enhance connectivity and reduce congestion throughout the region. It will offer a direct route from US 17/SR 35 to Winter Lake Road/SR 540, Polk Parkway/SR 570, and I-4.
- WHO:** Florida Department of Transportation (FDOT) Secretary Jared W. Perdue, P.E., Florida's Turnpike Enterprise Executive Director & CEO Nicola A. Liquori, FDOT District One Interim Secretary and Transportation Development Director John Kubler, P.E., Officials from Polk County, City of Bartow, City of Winter Haven.
- WHEN:** 10 a.m. Thursday, March 23, 2023  
**Media Arrival 9:30 a.m.**
- WHERE:** Northeast corner of Thornhill Road and Fussell Road  
Winter Haven, FL 33880

###

[www.floridasturnpike.com](http://www.floridasturnpike.com) | Twitter: @FloridaTurnpike | Facebook: @MyFDOTTurnpike

The Florida Department of Transportation's mission is to provide a safe transportation system that ensures the mobility of people and goods, enhances economic prosperity, and preserves the quality of the state's environment and communities. The department is committed to building a transportation system that not only fits the current needs of Florida's residents and visitors, but also enhances mobility throughout the state to accommodate its consistent and rapid growth. The unique nature of the Sunshine State and its year-round warm climate provides numerous opportunities to achieve the department's mission through multiple transportation modes including highways/streets, air, rail, sea, spaceports, transit, and the ever-expanding deployment of bicycle & pedestrian facilities



## Central Polk Parkway/SR 570B From Polk Parkway/SR 570 to US 17/SR 35

### Project Description

Florida's Turnpike Enterprise is constructing Central Polk Parkway/State Road (SR) 570B, a new, four-lane (two lanes in each direction) tolled roadway. This new stretch of roadway will begin at Polk Parkway/SR 570 and Winter Lake Road/SR 540 and extend approximately 6.5 miles to US 17/SR 35. Central Polk Parkway will serve future traffic needs by accommodating population growth in Polk County, providing a more direct route for north and south commuter and truck traffic, as well as expanding emergency evacuation options.

Benefits from this project include:

- Increasing roadway capacity for commuters and travelers in West Central Florida
- Reducing congestion and improving connectivity by providing a more direct route from US 17/SR 35 to Winter Lake Road/SR 540, Polk Parkway, and Interstate 4
- Delivering a more resilient facility by using pavement materials designed to help rainwater drain off the roadway quickly
- Enhancing safety by installing skid resistant pavement on travel lane surfaces to improve vehicle braking and reduce road noise
- Providing additional safety measures by installing:
  - New guardrails meeting the latest height requirements
  - Wrong-way driver detection technology at all interchange exit ramps to monitor, detect, and deter wrong-way drivers
  - Highly reflective signage and pavement markings to improve visibility in all lighting and weather conditions

### Construction and Traffic Impacts

Construction will take place during both daytime and nighttime hours. Nearby residents and businesses may experience periodic construction light, noise, vibration, and dust. The Enterprise takes steps to reduce construction impacts and efforts will be made to limit traffic and noise disruptions.

Lane closures will generally take place during off peak hours to minimize traffic congestion and delays for most drivers. Closures will be announced in advance in the Central and West Central Florida Weekly Lane Closures and Work Zone Advisory.

#### Schedule and Funding

##### Construction Schedule

Work is anticipated to be completed in late 2029.

##### Cost and Funding

The project cost is approximately \$257 million.

#### Public Information

##### Louis Grisoglio

Community Outreach Specialist  
407-264-3069 / 1-800-749-PIKE

[Louis.Grisoglio@dot.state.fl.us](mailto:Louis.Grisoglio@dot.state.fl.us)

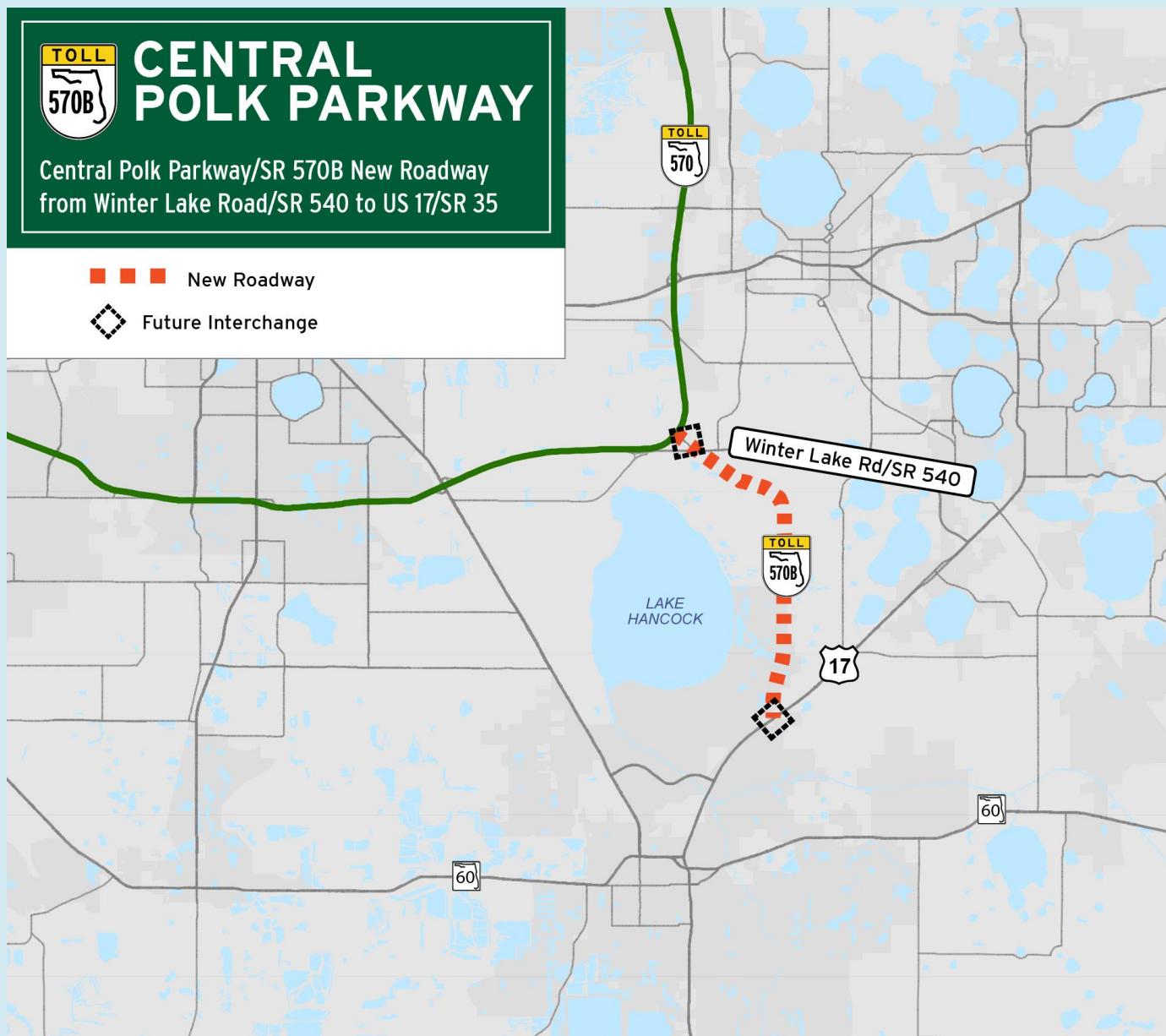
[www.FloridasTurnpike.com](http://www.FloridasTurnpike.com)

[twitter.com/FloridaTurnpike](https://twitter.com/FloridaTurnpike)





Florida's Turnpike Enterprise  
PO Box 613069  
Ocoee, FL 34761



To receive construction updates via e-mail, please contact [Louis.Grisoglio@dot.state.fl.us](mailto:Louis.Grisoglio@dot.state.fl.us).



# CENTRAL POLK PARKWAY GROUND BREAKING

**Central Polk Parkway/SR 570B from Polk Parkway/SR 570 to US 17/SR 35**

## **Frequently Asked Questions**

### **What will be completed as part of this project?**

*Florida's Turnpike Enterprise will be constructing Central Polk Parkway/State Road (SR) 570B, a new four-lane (two lanes in each direction) tolled roadway. This new stretch of roadway will begin at Polk Parkway/SR 570 and Winter Lake Road/SR 540 and extend approximately 6.5 miles to US 17/SR 35.*

*This project also includes the installation of a new electronic tolling site, a diamond interchange at Winter Lake Road/SR 540, and a new at-grade intersection at US 17, west of the Gordon Heights Community. This new intersection will allow traffic to enter and exit the Central Polk Parkway to and from the north. There will also be new turn lanes added along US 17.*

### **What safety improvements are being made as part of this project?**

*The Enterprise is installing wrong-way driving detection technology at all interchange exit ramps to monitor, detect, and deter wrong-way drivers.*

*The Enterprise is also installing skid resistant pavement on travel lane surfaces to improve vehicle braking and reduce road noise. This roadway is also designed to help rainwater drain off the road, to prevent hydroplaning.*

*The project will also install highly reflective signage and pavement markings to improve visibility in all lighting and weather conditions, as well as add new guardrails.*

### **Why is this project being completed?**

*This new roadway will serve the future traffic needs of Polk County. It will provide better options for moving people and goods, create less congestion on existing area roadways, improve regional connectivity, improve emergency evacuation times, and accommodate future population growth and land use.*

*The project also provides a more direct route from US 17 to SR 540, Polk Parkway and to I-4. In addition, it will decrease commercial traffic through Bartow.*

### **How much will it cost?**

*Construction costs for this project is approximately \$257 million.*

### **Where does the funding come from?**

*This project is funded through toll revenue from Florida's Turnpike facilities.*

**How long will construction take?**

*The Enterprise anticipates construction continuing through 2029.*

**Will noise walls be built as part of this project?**

*Noise was studied as part of the earlier phases of this project, in the Project Development and Environment (PD&E) Study and Design. State and federal criteria for noise abatement was not met, so noise walls are not being constructed as part of this project.*

**Is this the same project FDOT District 1 completed?**

*In March 2011, FDOT District 1 completed a PD&E Study for the Central Polk Parkway, and it included the segment in this project. After the PD&E study was completed, FDOT District 1 began Design, but later transferred the project to Florida's Turnpike Enterprise in 2017.*

**What are the anticipated impacts to the Marshall Hampton Reserve Trail?**

*As part of this project, changes will be made to the Marshall Hampton Reserve Trail system. These include relocating the trailhead and equestrian parking area from their current location to south of SR 540 and the west side of Thornhill Road. A wildlife passing near Lake Lena Run will also be added as part of this project.*

**Will the trailhead at Marshall Hampton Reserve Trail remain open?**

*The existing Marshall Hampton Trailhead will be maintained during construction until the new trailhead and driveway are complete.*

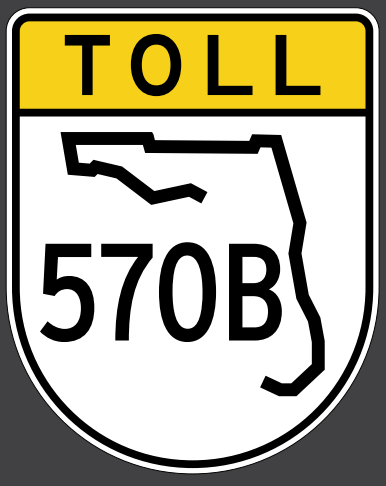
**Where can I find more information about this project?**

*For more information about this project, please visit [FloridasTurnpike.com](https://www.floridasturnpike.com) and click on Projects, then Featured Projects.*

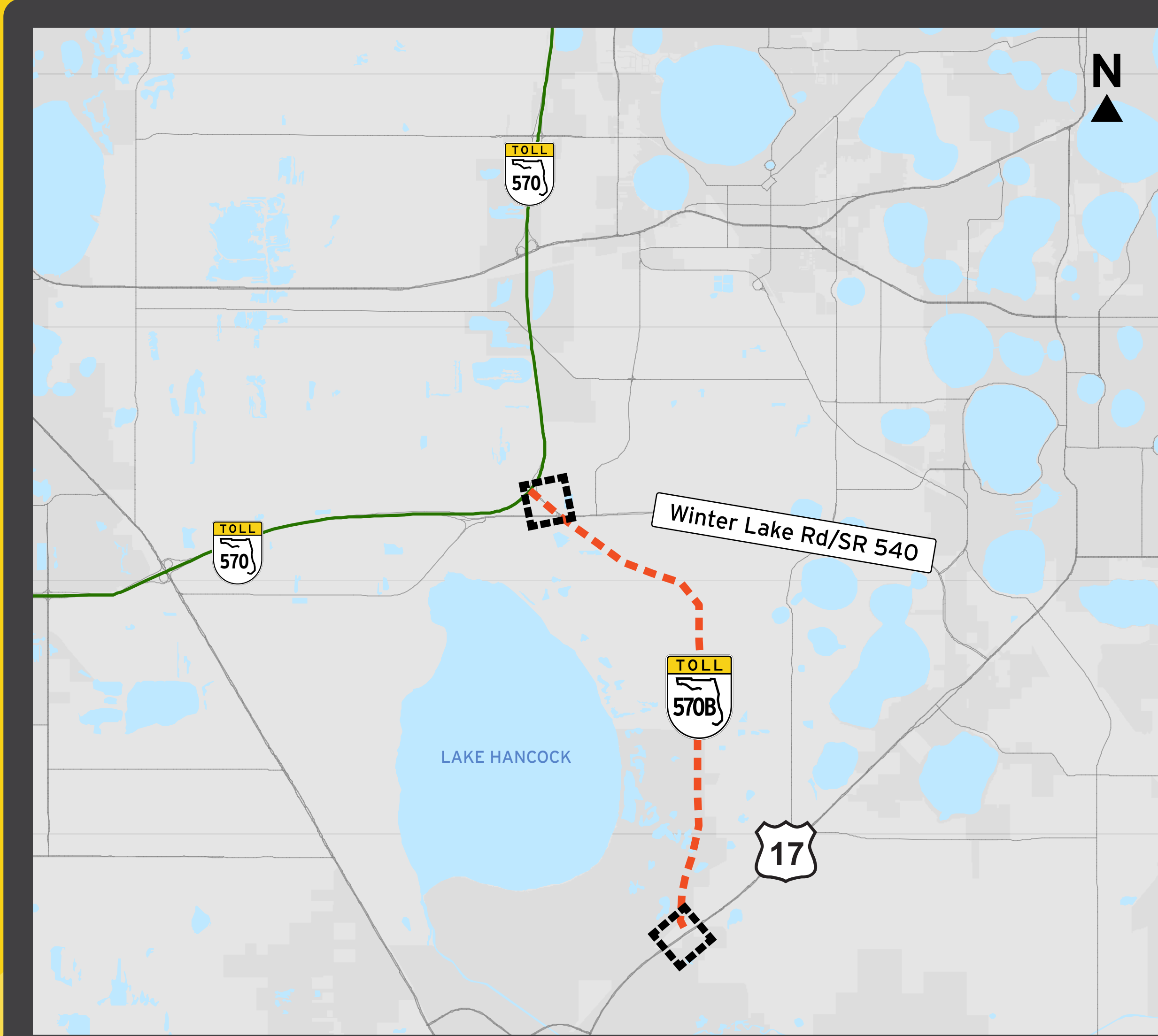
*This Central Polk Parkway project is just the first. The second phase from US 17/SR 35 to SR 60 is currently in Design. For more on that project, please visit [centralpolkparkway.com](https://centralpolkparkway.com).*

**How can I stay updated on this project's progress?**

*The best way to stay updated is by visiting the [FloridasTurnpike.com](https://www.floridasturnpike.com) website. You can also email the Community Outreach Specialist for this project, Louis Grisoglio, at [Louis.Grisoglio@dot.state.fl.us](mailto:Louis.Grisoglio@dot.state.fl.us) for project-related questions, or to be added to the project's distribution list.*



# CENTRAL POLK PARKWAY/SR 570B

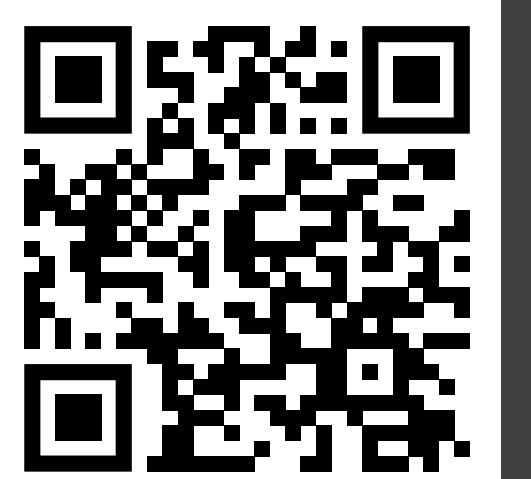


----- NEW ROADWAY      ◆ FUTURE INTERCHANGE

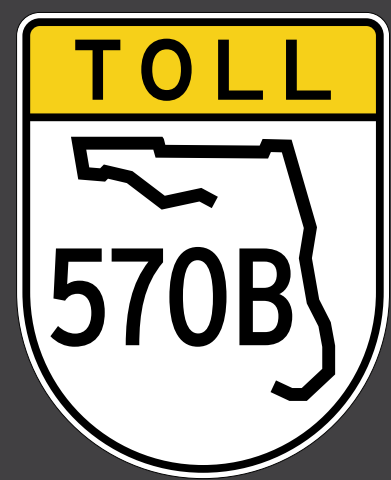
- ④ New four-lane tolled roadway from Polk Parkway/SR 570 to US 17/SR 35 in Polk county
- ④ Creates a system-to-system interchange at Polk Parkway
- ④ Diamond Interchange at Winter Lake Road/SR 540
- ④ New intersection at US 17/SR 35



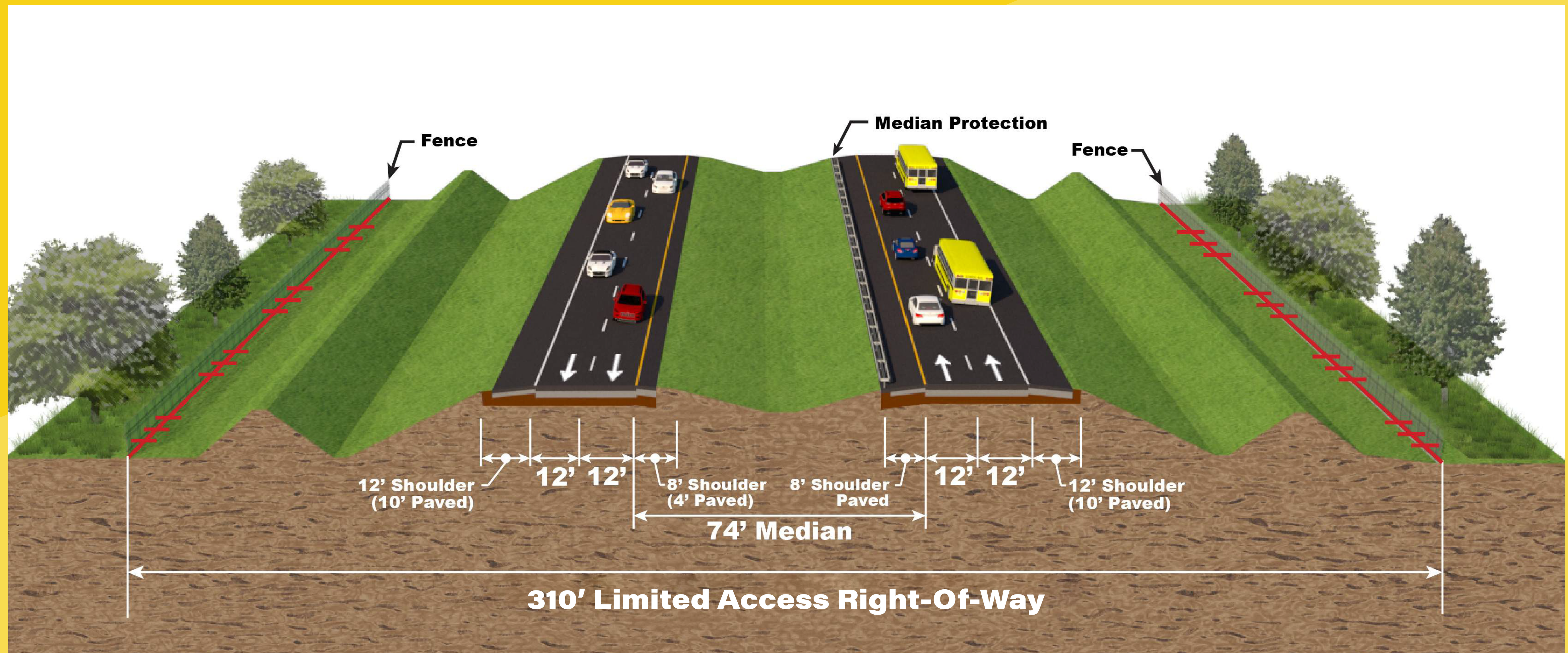
FLORIDASTURNPIKE.COM



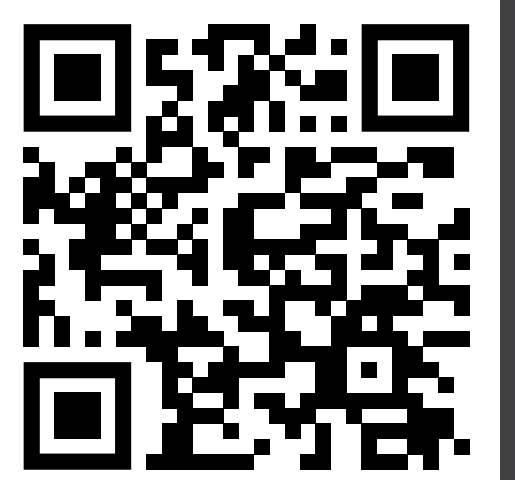




# CENTRAL POLK PARKWAY/SR 570B TYPICAL SECTION



VISIT [FLORIDASTURNPIKE.COM](https://www.floridasturnpike.com) FOR MORE INFORMATION

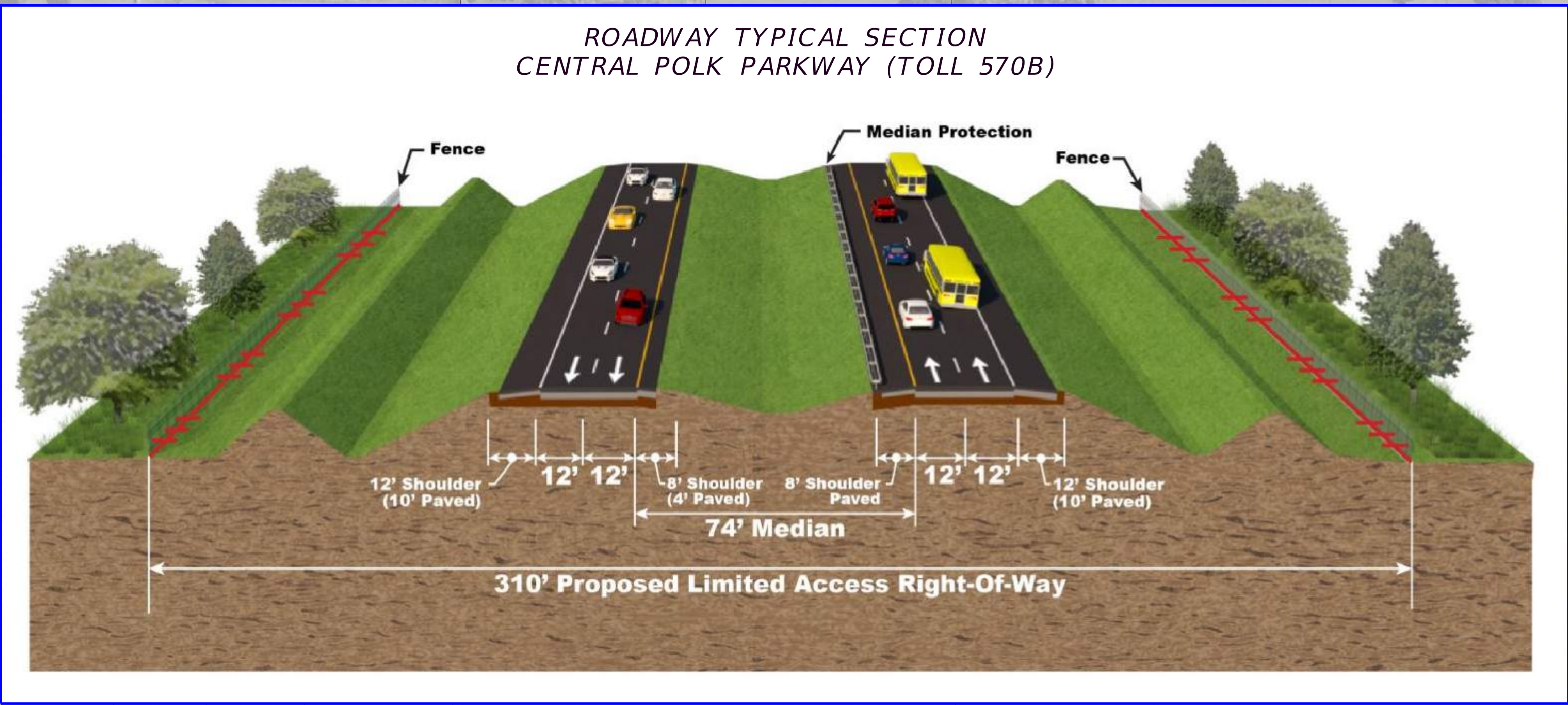




# CENTRAL POLK PARKWAY

FROM POLK PARKWAY (SR 570) TO US 17 (SR 35)  
DESIGN

Financial Project ID Number: 440897-2



**LEGEND:**

- PROPOSED ROADWAY
- PROPOSED BRIDGE
- PROPOSED TRAFFIC SIGNAL

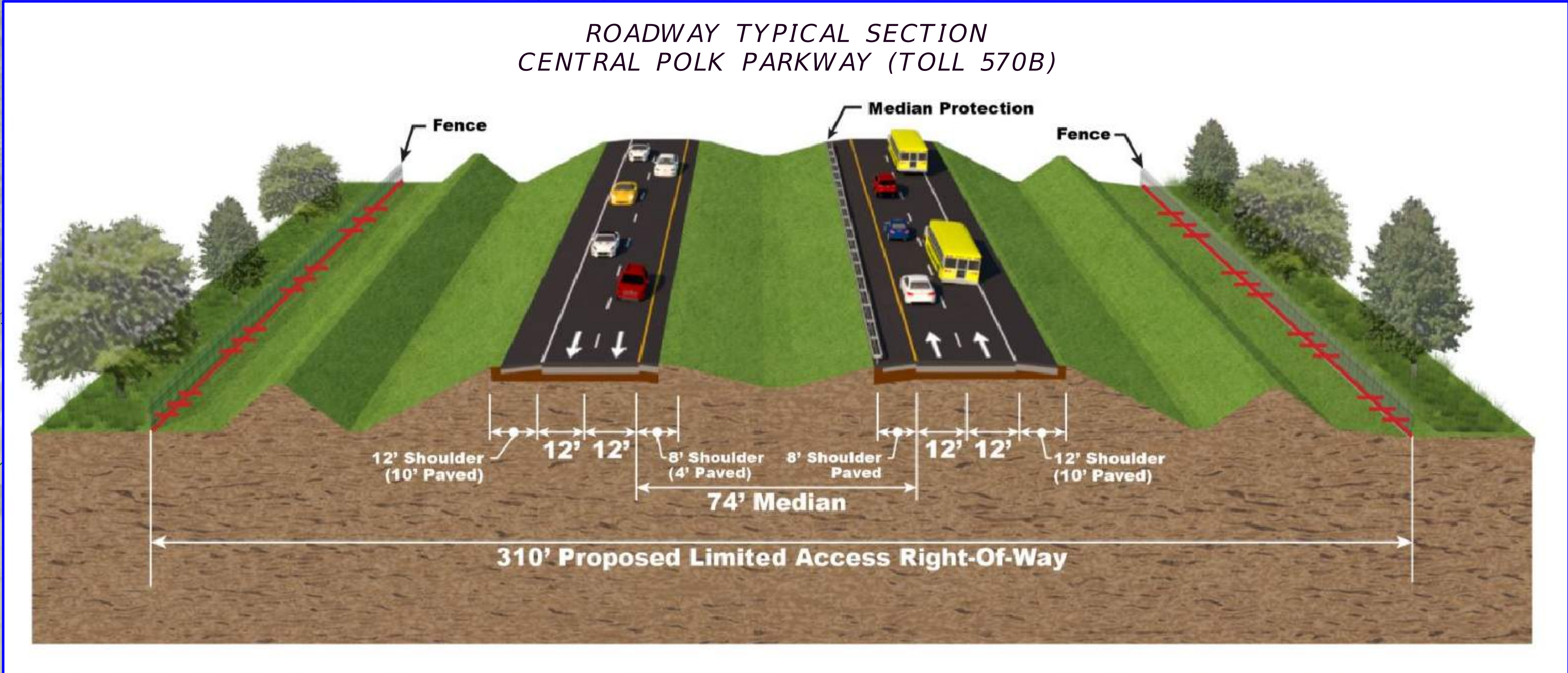
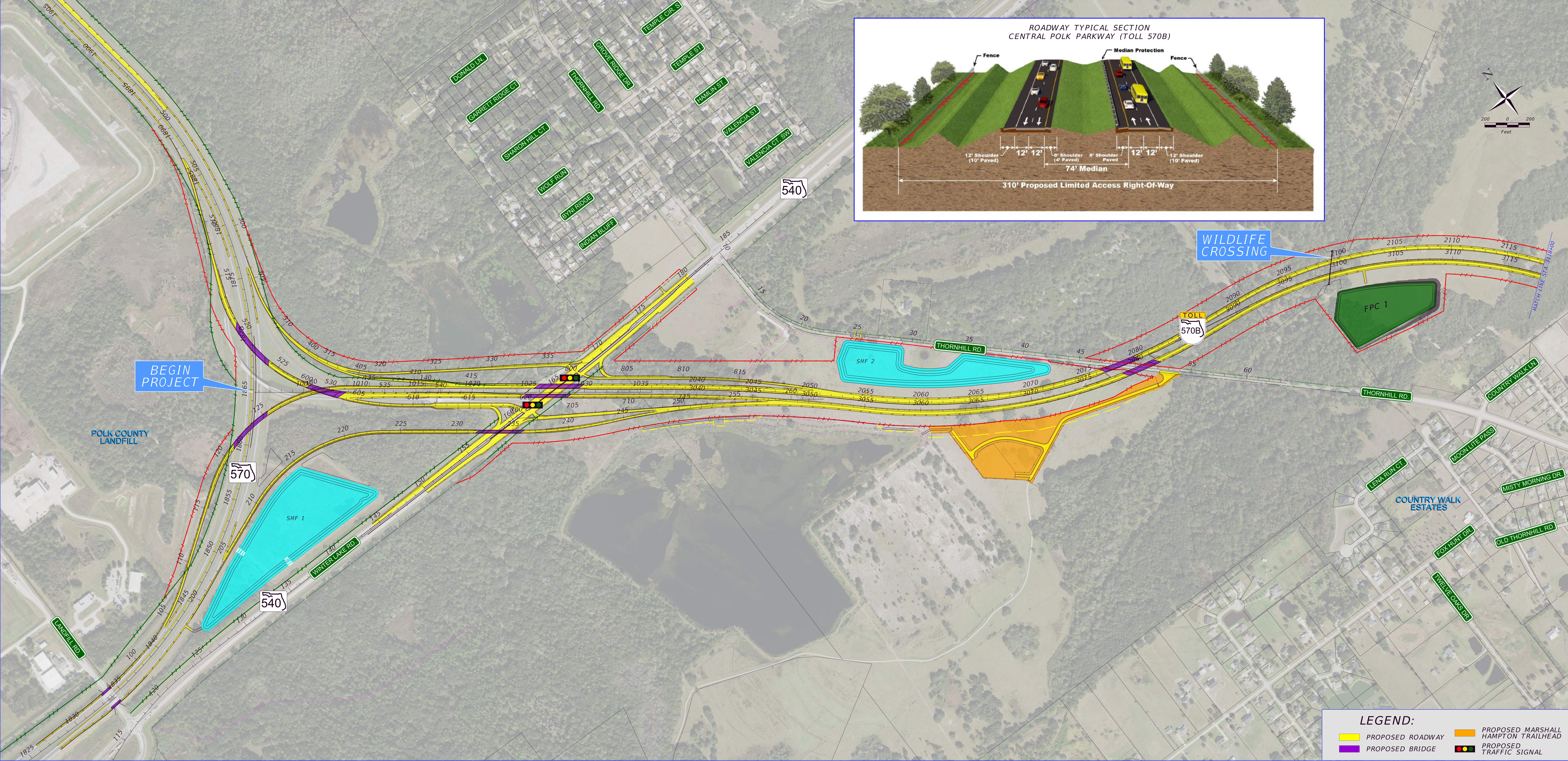




# CENTRAL POLK PARKWAY

FROM POLK PARKWAY (SR 570) TO US 17 (SR 35)  
DESIGN

Financial Project ID Number: 440897-2



**LEGEND:**

PROPOSED ROADWAY	PROPOSED MARSHALL HAMPTON TRAILHEAD
PROPOSED BRIDGE	PROPOSED TRAFFIC SIGNAL

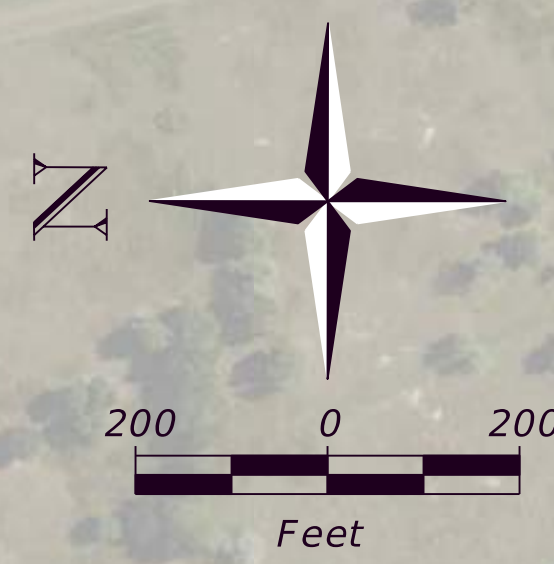
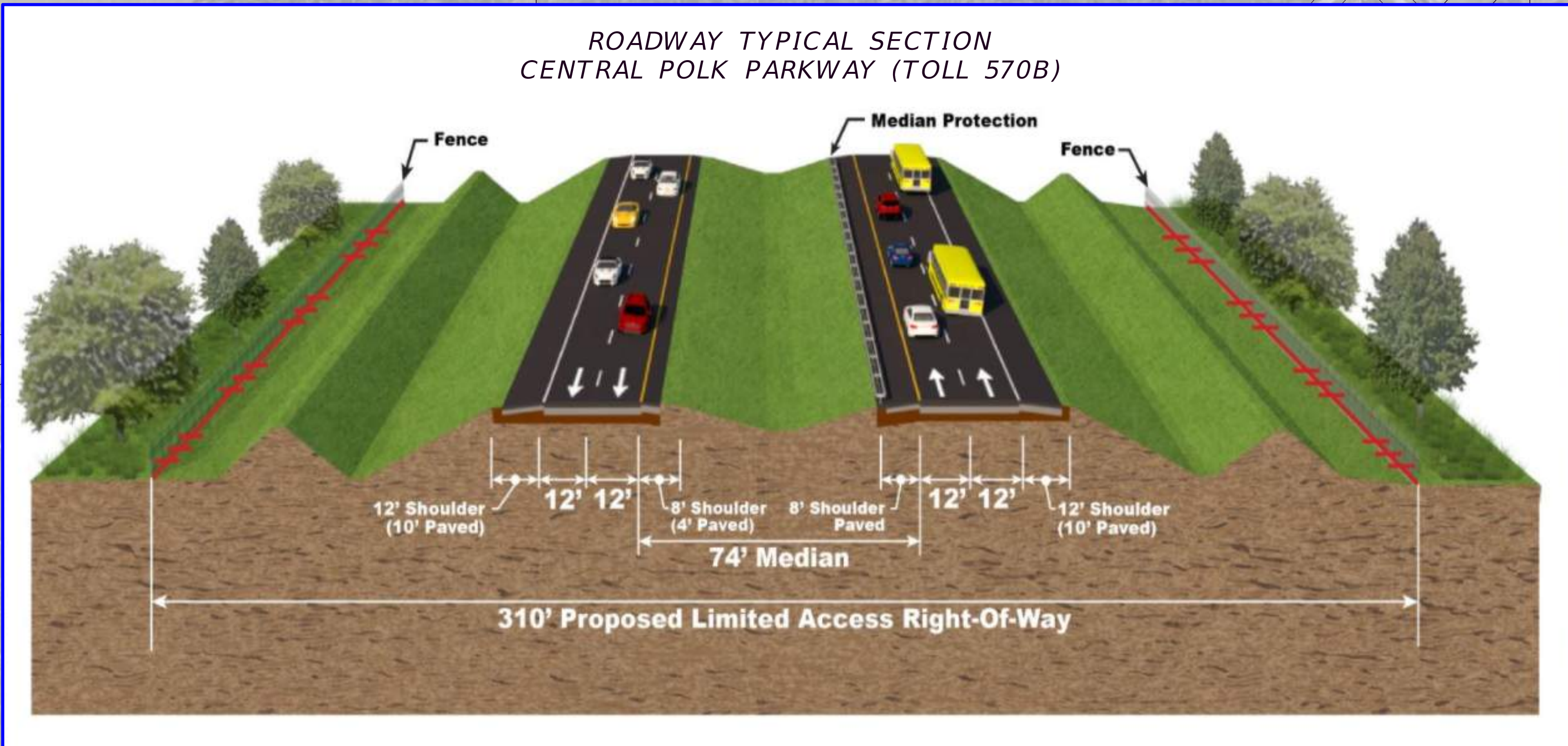
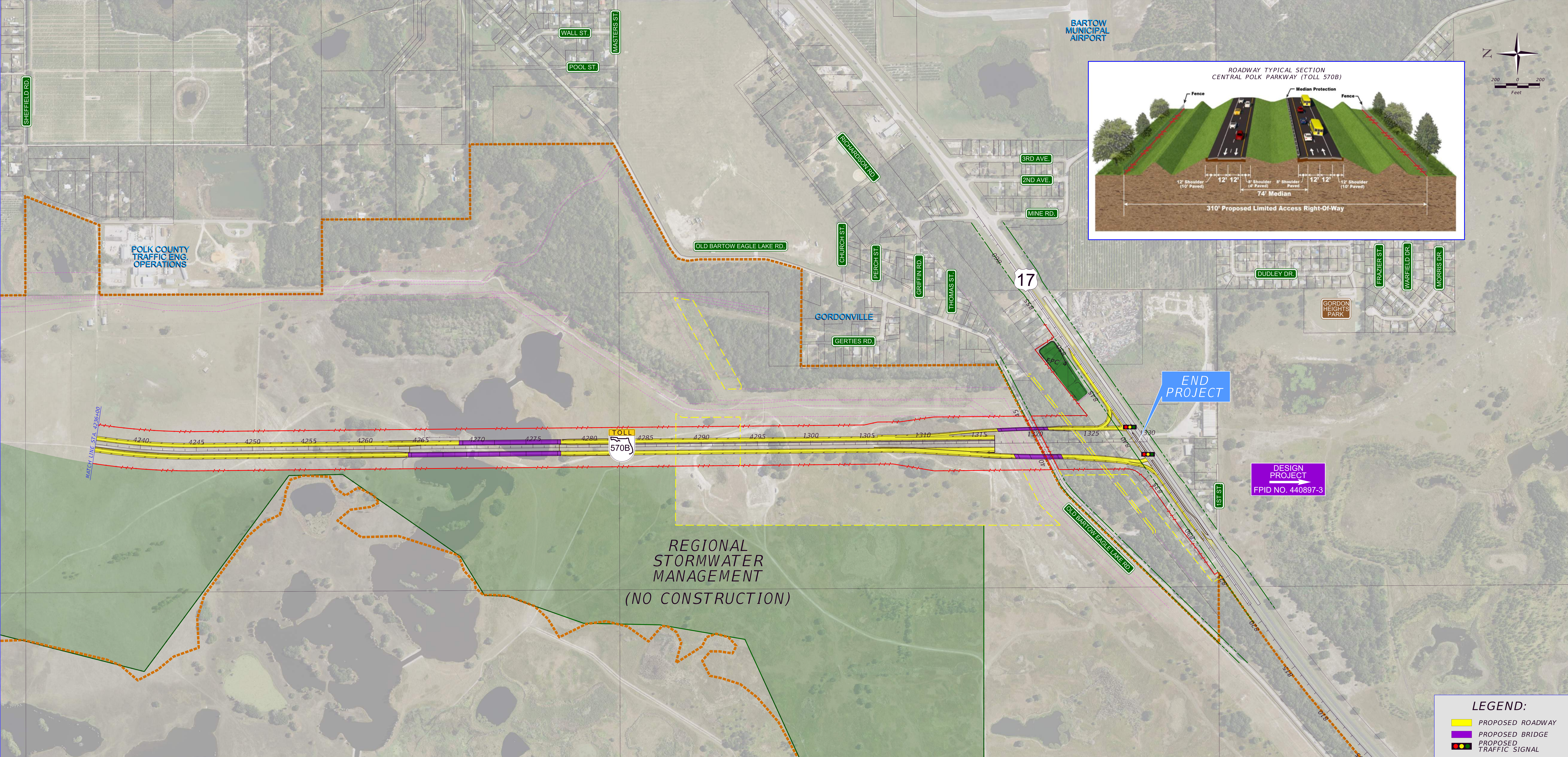




# CENTRAL POLK PARKWAY

FROM POLK PARKWAY (SR 570) TO US 17 (SR 35)  
DESIGN

Financial Project ID Number: 440897-2



**LEGEND:**

- PROPOSED ROADWAY
- PROPOSED BRIDGE
- PROPOSED TRAFFIC SIGNAL

