

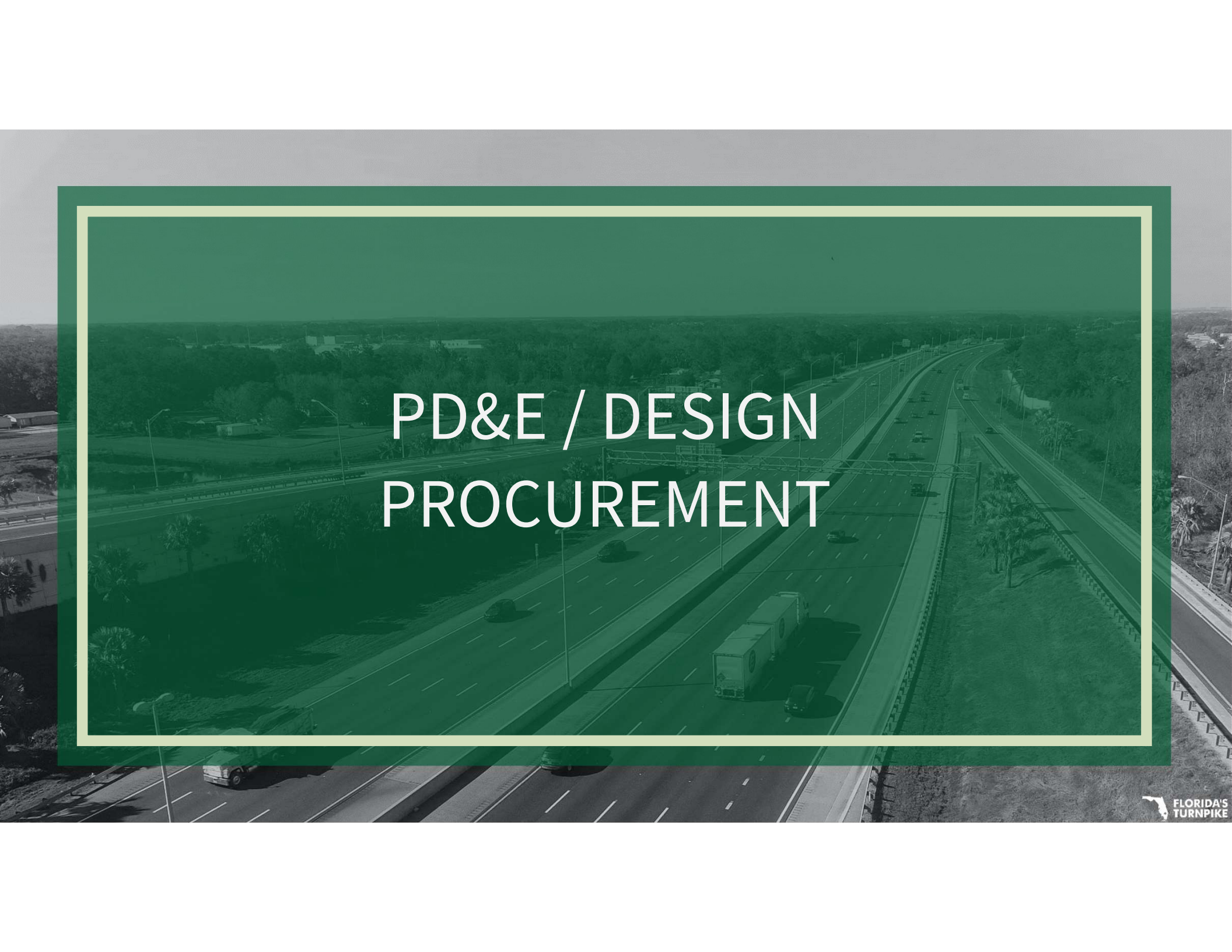


# FY 2024 Consultant Acquisition Plan

## Florida's Turnpike Enterprise

*As of 3/21/2023*



An aerial photograph of a multi-lane highway, likely a turnpike, with a green overlay and a white border. The text "PD&E / DESIGN PROCUREMENT" is centered in white. The highway has several lanes in both directions, with a large truck visible in the foreground. The surrounding area includes trees and some buildings in the distance.

# PD&E / DESIGN PROCUREMENT

# General Engineering and Continuing Services Contracts

Ad No	Formal Ad	Contract	Selection Method
24808	1/8/2024	GENERAL ENGINEERING CONTRACT – TRAFFIC AND REVENUE	LOR, TECH PROP AND ORAL PRESENTATION
24807	4/17/2023	CONT SVCS – GEOTECHNICAL AND MATERIALS TESTING AND INSPECTION SERVICES	ELOR
24817	10/16/2023	CONT SVCS – DESIGN SUPPORT (BDI)	ELOR
24820	4/17/2023	CONT SVCS – TSM&O	LOR AND ABBREVIATED TECH PROPOSAL
24822	6/12/2023	CONT SVCS – DESIGN BUILD PUSH BUTTON	LOR AND INTERVIEW

*Dates subject to change*

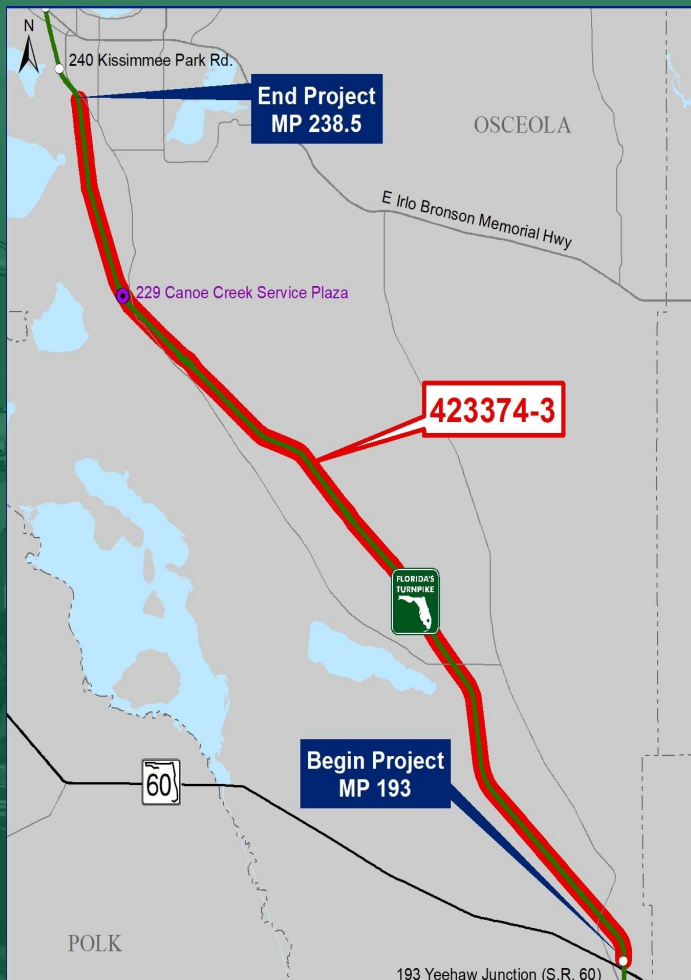
# PD & E Studies

Ad No	Formal Ad	FPID	Project	Selection Method
24816	7/17/2023	423374-3	PD&E FOR WIDENING TURNPIKE MAINLINE (SR 91) FROM NORTH OF SR 60 TO KISSIMMEE PARK RD (MP 193-238.5)	LOR AND ORAL PRESENTATION
24815	10/XX/2023	451419-1	PD&E CENTRAL POLK PARKWAY EAST – SOUTH OF US 17/92 TO SR 538	LOR AND ORAL PRESENTATION
24809		451419-2	PD&E CENTRAL POLK PARKWAY EAST – SR 60 TO US 17/92	

*Ad No 24815 and 24809 will be bundled into one (1) Advertisement*

*Dates subject to change*





## PD&E – WIDENING TURNPIKE MAINLINE (SR 91) FROM NORTH OF SR 60 TO KISSIMMEE PARK RD (MP 193-238.5)

PM	Suman Juluru (407) 264-3424
FPID(s)	423374-3-22-01
County/Counties	Turnpike
Anticipated Contract \$	\$4.20M
Anticipated Formal Ad	07/17/2023
Anticipated Contract Execution	02/06/2024
Anticipated Major / Minor Work Types	Major – 2.0, 3.3 Minor – 3.1, 3.2, 4.1.1, 4.1.2, 4.2.1, 4.2.2, 6.1, 6.2, 6.3.1, 6.3.2, 6.3.3, 7.1, 7.2, 7.3, 8.1, 8.2, 8.3, 8.4, 9.1, 9.2, 9.4.1, 14.0, 15.0

### General Project Description and Key Components

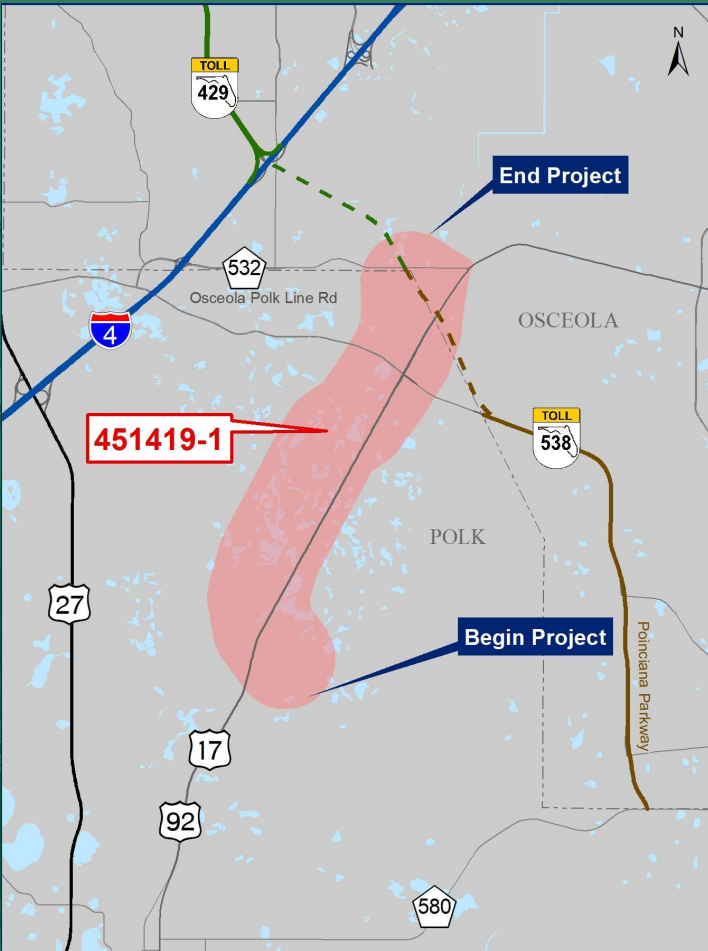
This study evaluates Turnpike Mainline (SR 91) widening from north of the Yeehaw Junction (SR 60) interchange to the south of Kissimmee Park Rd interchange (MP 193-238.5) in Osceola County. Included is the evaluation of new interchanges, maintaining access to the Canoe Creek Service Plaza (MP 229) and the Mainline AET Toll gantries.

## PD&E CENTRAL POLK PARKWAY EAST - SOUTH OF US 17/92 TO SR 538

PM	Jazlyn Heywood (407) 264-3298
FPID(s)	451419-1-22-01
County/Counties	Polk
Anticipated Contract \$	\$4.00M
Anticipated Formal Ad	10/xx/2023
Anticipated Contract Execution	04/xx/2024
Anticipated Major/Minor Work Types	Major – 2.0, 3.3 Minor – 4.1.1, 4.1.2, 4.2.1, 4.2.2, 4.2.3, 6.1, 6.2, 6.3.1, 6.3.2, 6.3.3, 7.1, 7.2, 7.3, 8.1, 8.2, 8.3, 8.4, 9.1, 9.2, 9.4.1, 14.0, 15.0

### General Project Description and Key Components

This study evaluates a new, approximately six-mile, tolled expressway from the future Central Polk Parkway East alignment south of US 17/92 (FPID 451419-2) to the proposed Poinciana Parkway Extension Connector (PPEC) (SR 538). PPEC is currently in the PD&E Study phase (FPID 446581-1) and the Poinciana Parkway Extension is currently under design by the Central Florida Expressway Authority (CFX). Work includes evaluating improvements to US 17/92 from south of Hibiscus Street to north of PPEC. Interchanges are anticipated at US 17/92 and PPEC.

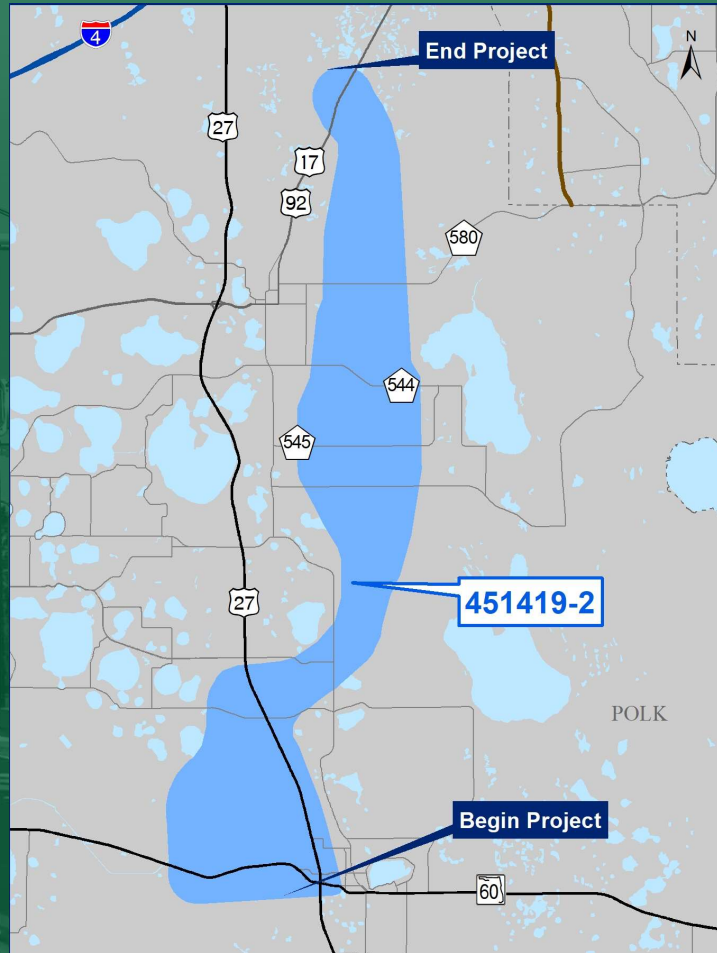


## PD&E CENTRAL POLK PARKWAY EAST – SR 60 TO US 17/92

PM	Jazlyn Heywood (407) 264-3298
FPID(s)	451419-2-22-01
County/Counties	Polk
Anticipated Contract \$	\$15.00M
Anticipated Formal Ad	10/xx/2023
Anticipated Contract Execution	04/xx/2024
Anticipated Major/Minor Work Types	Major – 2.0, 3.3 Minor – 4.1.1, 4.1.2, 4.2.1, 4.2.2, 4.2.3, 6.1, 6.2, 6.3.1, 6.3.2, 6.3.3, 7.1, 7.2, 7.3, 8.1, 8.2, 8.3, 8.4, 9.1, 9.2, 9.4.1, 14.0, 15.0

### General Project Description and Key Components

This PD&E study evaluates a new, approximately 22-mile, tolled expressway from SR 60 to US 17/92, and the evaluation of new interchanges. Work includes an Alternative Corridor Evaluation (ACE) to define initial corridors. An alignment developed and approved by FDOT District One under FPID 423601-1-22-01 will be considered.



# Resurfacing Projects

Ad No	Formal Ad	FPID	Project	Selection Method
24802	4/17/2023	445883-1	RESURFACE SOUTHERN CONNECTOR EXTENTION (SR 417) IN OSCEOLA COUNTY (MP 0-4)	ELOR
		445884-1	RESURFACE SOUTHERN CONNECTOR EXTENTION (SR 417) IN ORANGE COUNTY (MP 4-6)	
24825		447702-1	RESURFACE SUNCOAST PARKWAY (SR 589) IN PASCO COUNTY (MP 17.5-28.5)	
24824		449687-1	RESURFACE SEMINOLE EXPRESSWAY (SR 417) IN SEMINOLE COUNTY (MP 50-55)	

*These will be bundled into one (1) Advertisement.*

*Dates subject to change*



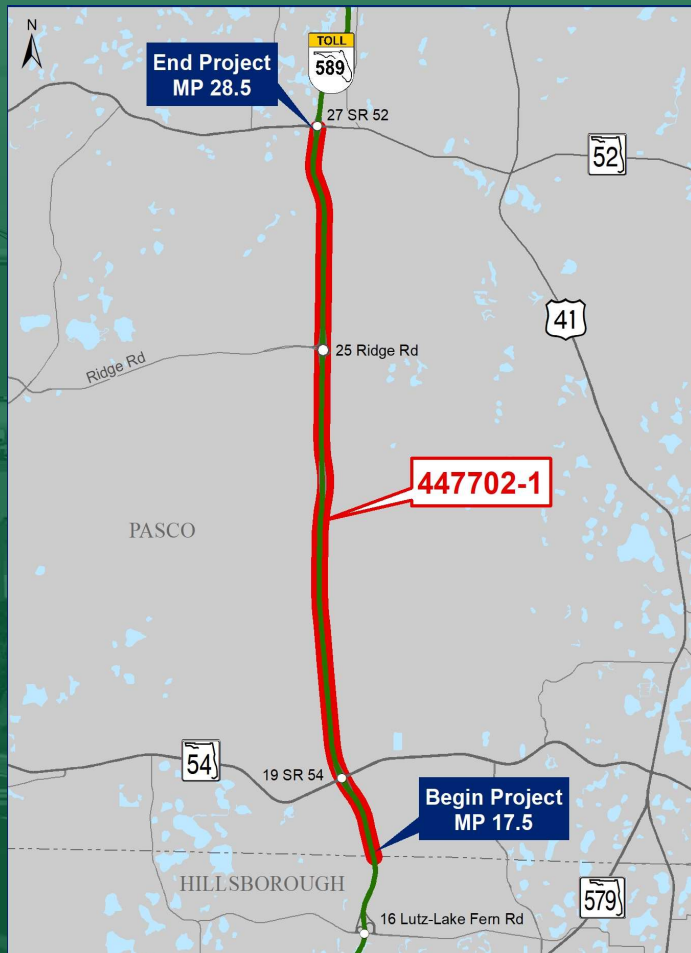
## RESURFACE SOUTHERN CONNECTOR EXTENTION (SR 417) IN OSCEOLA COUNTY (MP 0-4) AND RESURFACE SOUTHERN CONNECTOR EXTENTION (SR 417) IN ORANGE COUNTY (MP 4-6)

PM	Cristina Dos Santos (407) 264-3485
FPID(s)	445883-1-32-01 and 445884-1-32-01
County/Countries	Orange and Osceola
Anticipated Contract \$	\$1.34M
Anticipated Formal Ad	04/17/2023
Anticipated Contract Execution	08/16/2023
Anticipated Major/Minor Work Types	Major – 3.3 Minor – 3.1, 3.2, 4.1.1, 4.1.2, 6.3.1, 6.3.2, 6.3.3, 7.1, 8.1, 8.2, 8.3, 9.1, 9.2

### General Project Description and Key Components

This project will mill, resurface, and provide roadside safety improvements of the Southern Connector Extension (SR 417) toll facility from I-4 in Orange County to Osceola County (MP 6). This includes interchanges with I-4, Celebration Ave, and Osceola Pkwy. An ERCAR is prepared under FPID 445883/4-2, summarizing existing conditions and recommended improvements. This project has two FPIDs as it crosses through two counties (Orange and Osceola). 445883-1 is for the Orange County section, and 445884-1 is for the Osceola County section.

## RESURFACE SUNCOAST PARKWAY (SR 589) IN PASCO COUNTY (MP 17.5-28.5)



PM	Ruby Monsalve (407) 264-3005
FPID(s)	447702-1-32-01
County/Counties	Pasco
Anticipated Contract \$	\$2.06M
Anticipated Formal Ad	04/17/2023
Anticipated Contract Execution	08/16/2023
Anticipated Major/Minor Work Types	Major – 3.3 Minor – 3.1, 3.2, 4.1.1, 4.1.2, 5.1, 6.3.1, 6.3.2, 6.3.3, 7.1, 7.3, 8.1, 8.2, 9.1, 9.2, 9.4.1

### General Project Description and Key Components

This project will mill, resurface, and provide roadside safety improvements of the Suncoast Parkway (SR 589) from south of SR 54 to SR 52 (MP 17.5-28.5) in Pasco County. This includes interchanges with SR 54 and SR 52. An ERCAR is prepared under FPID 447702-2-22-01, summarizing existing conditions and recommended improvements.

## RESURFACE SEMINOLE EXPRESSWAY (SR 417) IN SEMINOLE COUNTY (MP 50-55)

PM	Christopher Mills (407) 264-3436
FPID(s)	449687-1-32-01
County/Counties	Seminole
Anticipated Contract \$	\$1.12M
Anticipated Formal Ad	04/17/2023
Anticipated Contract Execution	08/16/2023
Anticipated Major/Minor Work Types	Major – 3.3 Minor – 3.1, 3.2, 4.1.1, 4.1.2, 5.1, 6.3.1, 6.3.2, 6.3.3, 7.1, 7.2, 7.3, 8.1, 8.2, 9.1, 9.2, 9.3, 9.4.1

### General Project Description and Key Components

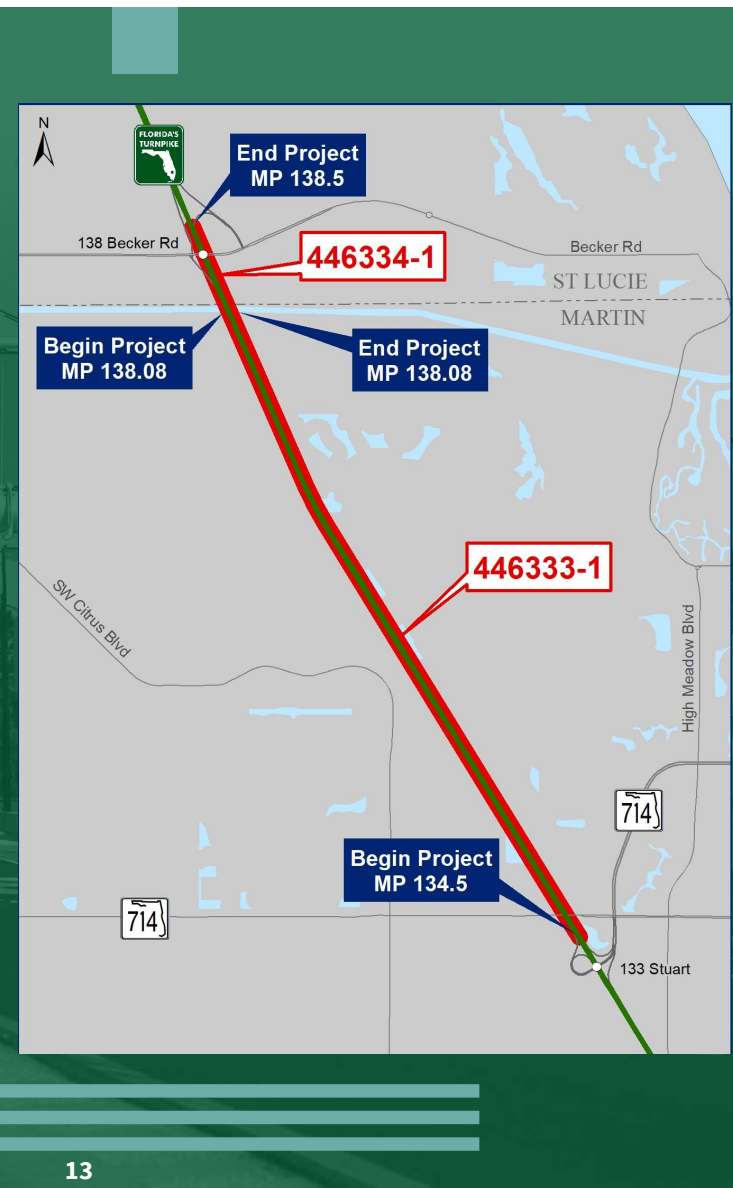
This project will mill, resurface, and provide roadside safety improvements of the Seminole Expressway (SR 417) toll facility from south of US 17/92 to the south of I-4 (MP 50-55) in Seminole County. This includes interchanges with US 17/92, CR 46A, and Rinehart Rd. An ERCAR is prepared under FPID 449687-2-22-01, summarizing existing conditions and recommended improvements.

# Capacity / Widening

Ad No	Formal Ad	FPID	Project	Selection Method
24827	10/23/2023	446333-1 446334-1	WIDEN TURNPIKE MAINLINE (SR 91), SW MARTIN HWY TO ST LUCIE COUNTY LINE (MP 134.5-138.08) (4 TO 8)	LOR AND ORAL PRESENTATION
			WIDEN TURNPIKE MAINLINE (SR 91) FROM MARTIN COUNTY LINE TO BECKER RD (MP 138.08-138.5) (4 TO 8)	
24828		446335-1	WIDEN TURNPIKE MAINLINE (SR 91), SW BECKER RD TO CROSSTOWN PKWY (MP 138.5-144.58)(4 TO 8)	
24806		446165-1	TURNPIKE MAINLINE (SR 91) INTERCHANGE IMPROVEMENTS AT SR 714 (MP134.5)	
24814		452120-1	WIDEN WESTERN BELTWAY (SR 429) – NORTH OF US 192 TO NORTH OF WESTERN WY (MP 6-8)	
24840		452121-1	WIDEN WESTERN BELTWAY (SR429)- N OF WESTERN WAY TO SEIDEL RD (MP 8-11)	
24810	9/11/2023	446579-1 452081-1 452083-1	WIDEN TURNPIKE MAINLINE (SR 91) FROM SOUTH OF SR 408 TO NORTH OF SR 429 (MP 265-269)	LOR AND ORAL PRESENTATION
24811	8/14/2023	437952-1	WIDEN SEMINOLE EXPRESSWAY (SR 434) TO NORTH OF CR 427 (MP 44-49.4) (4 TO 8)	LOR AND ORAL PRESENTATION
24813	6/26/2023	435787-1 435788-1 435788-2 435789-1	WIDEN TURNPIKE MAINLINE (SR 91) – US 27 TO I-75 (MP 289-308)	LOR AND ORAL PRESENTATION

*Ad No 24827, 24828, 24806, 24814, and 24813 will be bundled into one (1) Advertisement*





## WIDEN TURNPIKE MAINLINE (SR 91), SW MARTIN HWY TO ST LUCIE COUNTY LINE (MP 134.5-138.08) (4 TO 8), AND WIDEN TURNPIKE MAINLINE (SR 91) FROM MARTIN COUNTY LINE TO BECKER RD (MP 138.08-138.5) (4 TO 8)

PM (Subject to Change)	Su Hao (407) 264-3189
FPID(s)	446333-1-32-01 & 446334-1-32-01
County/Counties	Martin / St. Lucie
Anticipated Contract \$	\$15.26M
Anticipated Formal Ad	10/23/2023
Anticipated Contract Execution	4/18/2024
Anticipated Major/Minor Work Types	Major – 3.3 Minor – 2.0, 3.1, 3.2, 4.1.1, 4.1.2, 4.2.1, 4.2.2, 6.1, 6.2, 6.3.1, 6.3.2, 6.3.3, 7.1, 7.2, 7.3, 8.1, 8.2, 8.3, 8.4, 9.1, 9.2, 9.4.1, 14.0, 15.0

### General Project Description and Key Components

These design projects will widen Turnpike Mainline (SR 91) from north of SR 714 to north of Becker Rd (MP 134.5-138.5) in Martin and St Lucie Counties. A PD&E for this project was performed under FPID 423374-1-22-01, which summarizes proposed improvements.



## WIDEN TURNPIKE MAINLINE (SR 91), SW BECKER RD TO CROSSTOWN PKWY (MP 138.5-144.58)(4 TO 8)

PM (Subject to Change)	Su Hao (407) 264-3189
FPID(s)	446335-1-32-01
County/Counties	St. Lucie
Anticipated Contract \$	\$11.44M
Anticipated Formal Ad	10/23/2023
Anticipated Contract Execution	/2024
Anticipated Major/Minor Work Types	Major – 3.3 Minor – 2.0, 3.1, 3.2, 4.1.1, 4.1.2, 4.2.1, 4.2.2, 6.1, 6.2, 6.3.1, 6.3.2, 6.3.3, 7.1, 7.2, 7.3, 8.1, 8.2, 8.3, 8.4, 9.1, 9.2, 9.4.1, 14.0, 15.0

### General Project Description and Key Components

This design project will widen Turnpike Mainline (SR 91) north of Becker Rd to Crosstown Pkwy (MP 138.5-144.58) in St Lucie County. A PD&E for this project was performed under FPID 423374-1-22-01, which summarizes proposed improvements.

## TURNPIKE MAINLINE (SR 91) INTERCHANGE IMPROVEMENTS AT SR 714 (MP 134.5)

PM (Subject to Change)	Su Hao (407) 264-3189
FPID(s)	446165-1-32-01
County/Counties	Martin
Anticipated Contract \$	\$8.39M
Anticipated Formal Ad	10/23/2023
Anticipated Contract Execution	4/18/2024
Anticipated Major/Minor Work Types	Major – 3.3 Minor – 3.1, 3.2, 4.1.1, 4.1.2, 4.2.1, 4.2.2, 6.1, 6.2, 6.3.1, 6.3.2, 6.3.3, 7.1, 7.2, 7.3, 8.1, 8.2, 8.3, 8.4, 9.1, 9.2, 9.4.1, 14.0, 15.0

### General Project Description and Key Components

This design project improves Turnpike Mainline (SR 91) and SR 714 interchange (MP 134.5) in Martin County. A PD&E for this project was performed under FPID 423374-1-22-01, which summarizes proposed improvements.

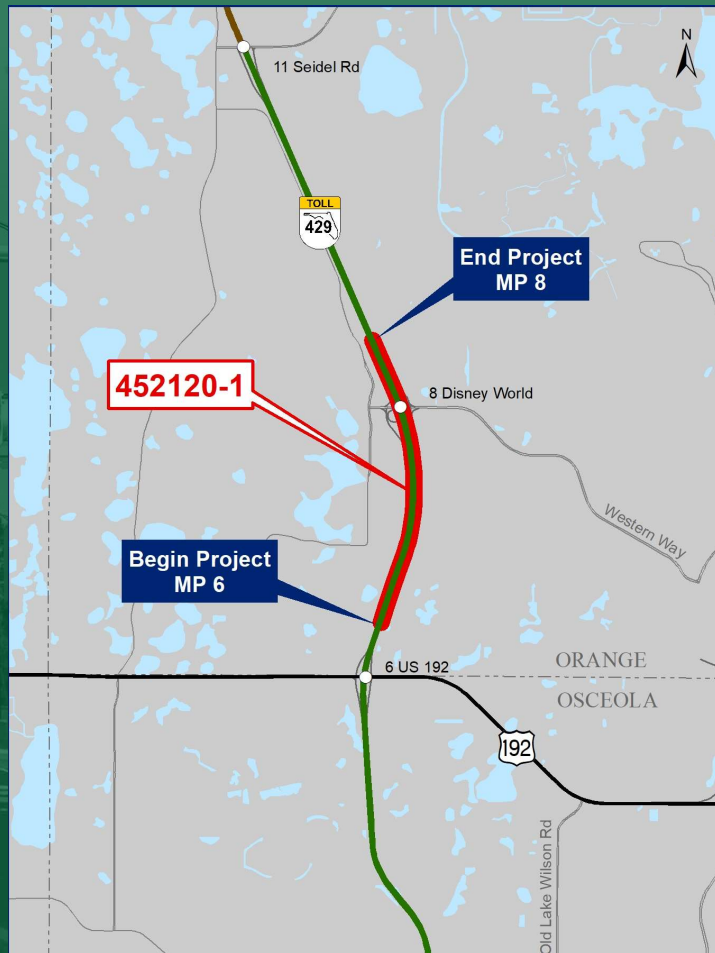


## WIDEN WESTERN BELTWAY (SR 429)- NORTH OF US 192 TO NORTH OF WESTERN WAY (MP 6-8)

PM	Ruby Monsalve (407) 264-3005
FPID(s)	452120-1-32-01
County/Counties	Orange
Anticipated Contract \$	\$4.80M
Anticipated Formal Ad	10/23/2023
Anticipated Contract Execution	4/18/2024
Anticipated Major/Minor Work Types	Major – 3.3 Minor – 2.0, 3.1, 3.2, 4.1.1,4.1.2, 4.2.1, 4.2.2, 5.4, 6.1, 6.2, 6.3.1, 6.3.2, 6.3.3, 7.1, 7.2, 7.3, 8.1, 8.2, 8.3, 8.4, 9.1, 9.2, 9.4.1, 14.0, 15.0

### General Project Description and Key Components

This design project will widen the Western Beltway (SR 429) from north of US 192 to north of Western Way (MP 6-8) in Orange County. A PD&E for this project was performed under FPID 446164-1-22-01, which summarizes proposed improvements.

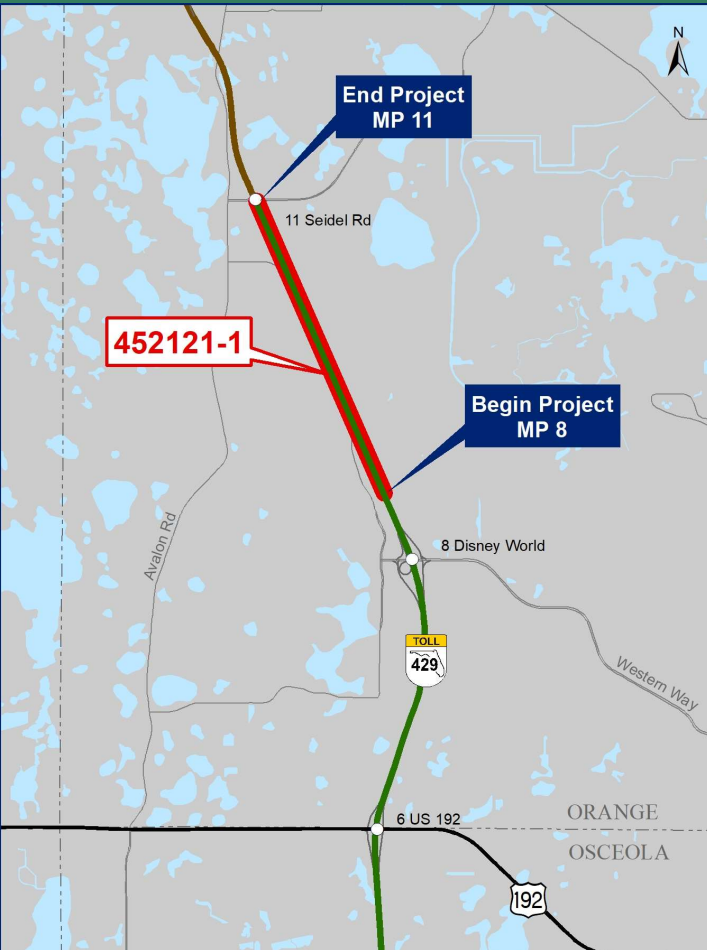


## WIDEN WESTERN BELTWAY (SR429) N OF WESTERN WAY TO SEIDEL RD (MP 8-11)

PM	Ruby Monsalve (407) 264-3005
FPID(s)	452121-1-32-01
County/Counties	Orange
Anticipated Contract \$	\$6.00M
Anticipated Formal Ad	10/23/2023
Anticipated Contract Execution	4/18/2024
Anticipated Major/Minor Work Types	Major – 3.3 Minor – 3.1, 3.2, 4.1.1, 4.1.2, 4.2.1, 4.2.2, 5.4, 6.1, 6.2, 6.3.1, 6.3.2, 6.3.3, 7.1, 7.2, 7.3, 8.1, 8.2, 8.3, 8.4, 9.1, 9.2, 9.3, 9.4.1, 14.0, 15.0

### General Project Description and Key Components

This design project will widen the Western Beltway (SR 429) from north of Western Way (MP 8) to Seidel Rd (MP 11) in Orange County. A PD&E for this project was performed under FPID 446164-1-22-01, which summarizes the proposed improvements.

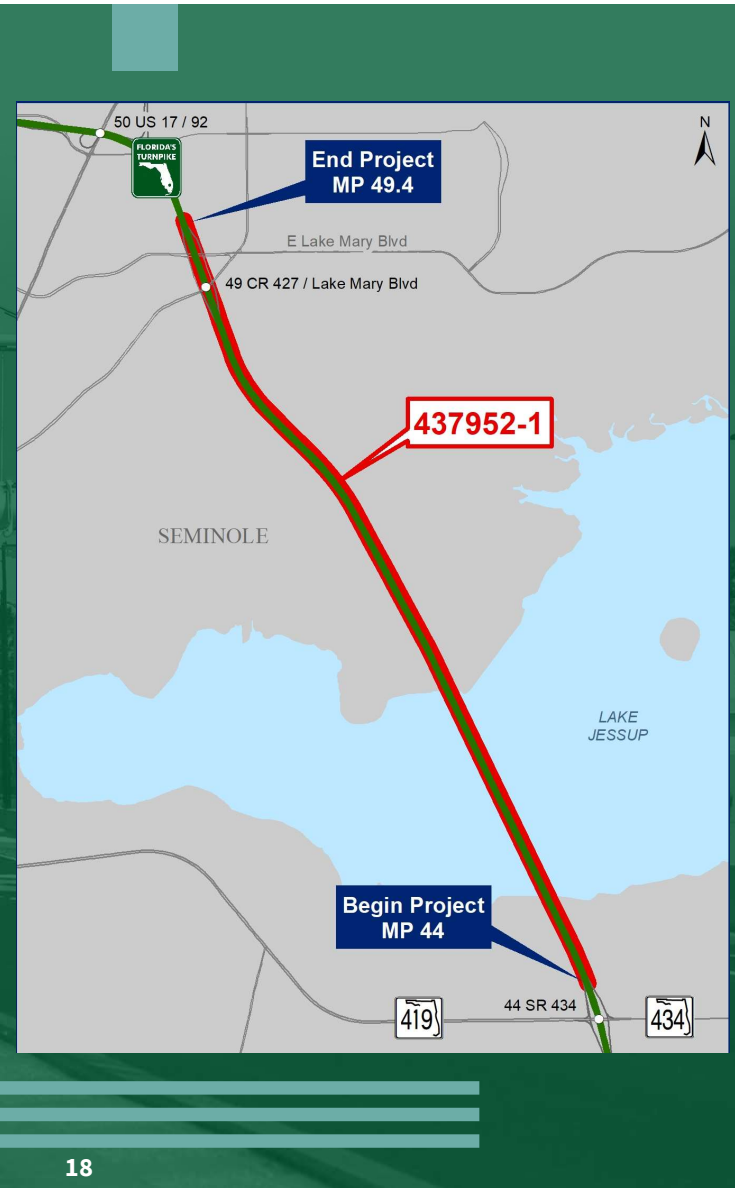


## WIDEN SEMINOLE EXPRESSWAY (SR 434) TO NORTH OF CR 427 (MP 44-49.4) (4 TO 8)

PM	Christopher Mills (407) 264-3436
FPID(s)	437952-1-32-01
County/Counties	Seminole
Anticipated Contract \$	\$19.93M
Anticipated Formal Ad	08/14/2023
Anticipated Contract Execution	03/05/2024
Anticipated Major/Minor Work Types	Major – 3.3, 4.2.1, 4.2.2 Minor – 2.0, 3.1, 3.2, 4.1.1, 4.1.2, 6.1, 6.2, 6.3.1, 6.3.2, 6.3.3, 7.1, 7.2, 7.3, 8.1, 8.2, 8.3, 8.4, 9.1, 9.2, 9.4.1, 14.0, 15.0

### General Project Description and Key Components

This design project will widen the SR 417 toll facility from SR 434 to north of CR 427 (MP 44-49.4) in Seminole County. A PD&E for this project was performed under FPID 417545-1-22-01, which summarizes proposed improvements.



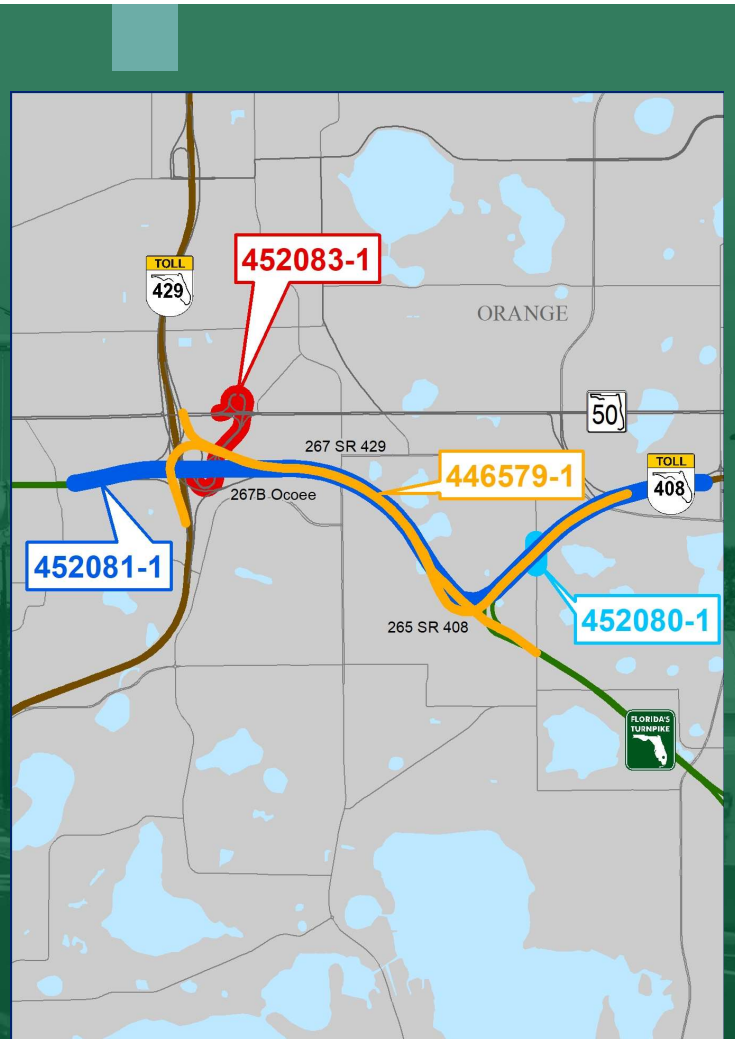


## WIDEN TURNPIKE MAINLINE (SR 91) FROM SOUTH OF SR 408 TO NORTH OF SR 429 (MP 265-269)

PM	Mike Leo (407) 264-3414
FPID(s)	446579-1-32-01, 452081-1-32-01 and 452083-1-32-01
County/Countries	Orange
Anticipated Contract \$	\$13.60M
Anticipated Formal Ad	09/11/2023
Anticipated Contract Execution	04/04/2024
Anticipated Major/Minor Work Types	Major – 3.3 Minor – 2.0, 3.1, 3.2, 4.1.1, 4.1.2, 4.2.1, 4.2.2, 6.1, 6.2, 6.3.1, 6.3.2, 6.3.3, 7.1, 7.2, 7.3, 8.1, 8.2, 8.3, 8.4, 9.1, 9.2, 9.4.1, 14.0, 15.0

### General Project Description and Key Components

This project is final design services for Turnpike Mainline (SR 91) widening and the interchanges with SR 408 and SR 429. The limits of this project include Turnpike Mainline (SR 91) from MP 265-269, SR 408 west of the Old Winter Garden overpass, Turnpike Mainline (SR 91)/SR 408 interchange, Turnpike Mainline (SR 91)/SR 429 interchange to the ramp terminals and the SR 50 Ocoee connector along with associated improvements along SR 50. A PD&E for this project is ongoing under FPID 444007-1, which summarizes proposed improvements.

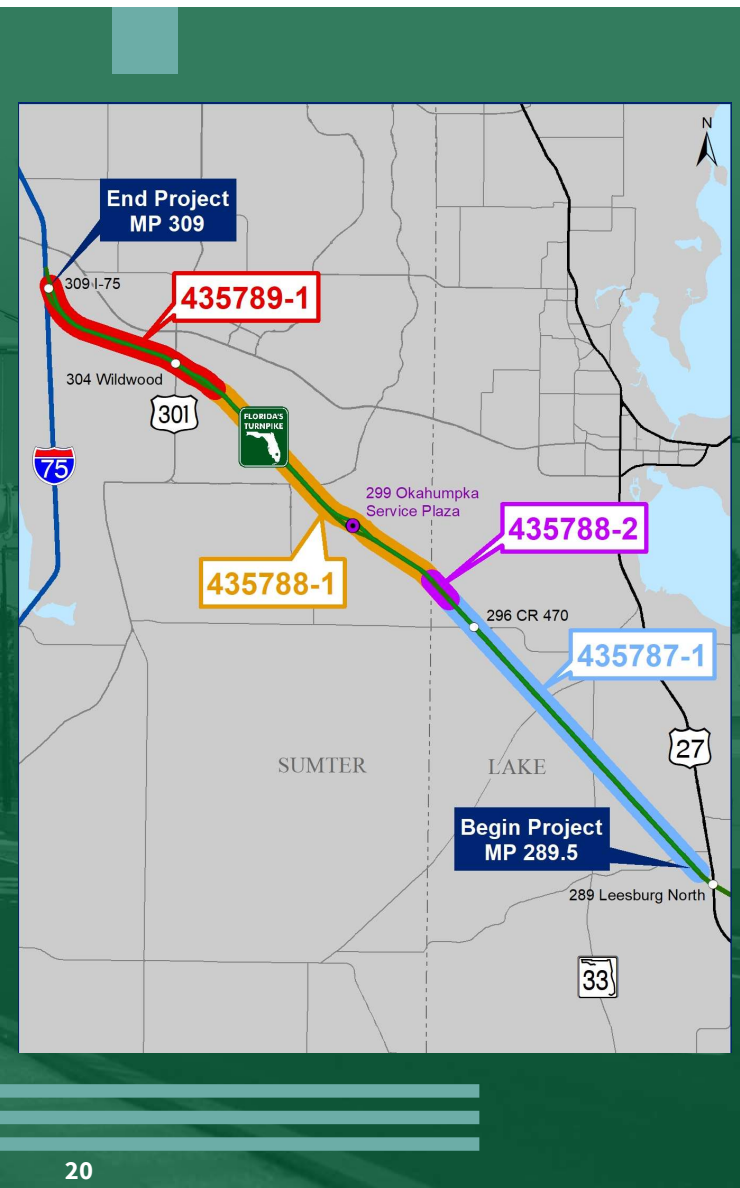


## WIDEN TURNPIKE MAINLINE (SR 91) – US 27 TO I-75 (MP 289-309)

PM	Pam Nagot (407) 264-3043
FPID(s)	435787-1-32-01, 435788-1-32-01, 435788-2-32-01 and 435789-1-32-01
County/Counties	Lake and Sumter
Anticipated Contract \$	\$19.30M
Anticipated Formal Ad	06/26/2023
Anticipated Contract Execution	01/17/2024
Anticipated Major/Minor Work Types	Major – 3.3, 4.2.1, 4.2.2 Minor – 2.0, 3.1, 3.2, 4.1.1, 4.1.2, 6.1, 6.2, 6.3.1, 6.3.2, 6.3.3, 7.1, 7.2, 7.3, 8.1, 8.2, 8.3, 8.4, 9.1, 9.2, 9.4.1, 14.0, 15.0

### General Project Description and Key Components

This project includes design and survey from MP 289.3-308.9 of Turnpike Mainline (SR 91). Work includes pavement widening, milling and resurfacing, maintenance of traffic plan, stormwater treatment facilities, bridge structures, tolling sites, signing, pavement marking improvements, signals, lighting, communications, and right-of-way acquisition.



# TSM&O / Operational Improvements

Ad No	Formal Ad	FPID	Project	Selection Method
24805	8/7/2023	452112-1	TSM&O TURNPIKE MAINLINE (SR 821) – SOUTH OF PALM DR TO CAMPBELL DR (MP 0-2)	LOR AND INTERVIEW
24812	8/7/2023	452228-1	HPS TO LED LIGHTING CONVERSION TURNPIKE-WIDE PHASE I	LOR AND INTERVIEW

3-15-23 - Ad No 24826 FPID 452082-1 TSM&O IMPROVEMENTS TO SR 50 OCOEE IN ORANGE COUNTY (MP 267B) removed, will be delivered via CSC

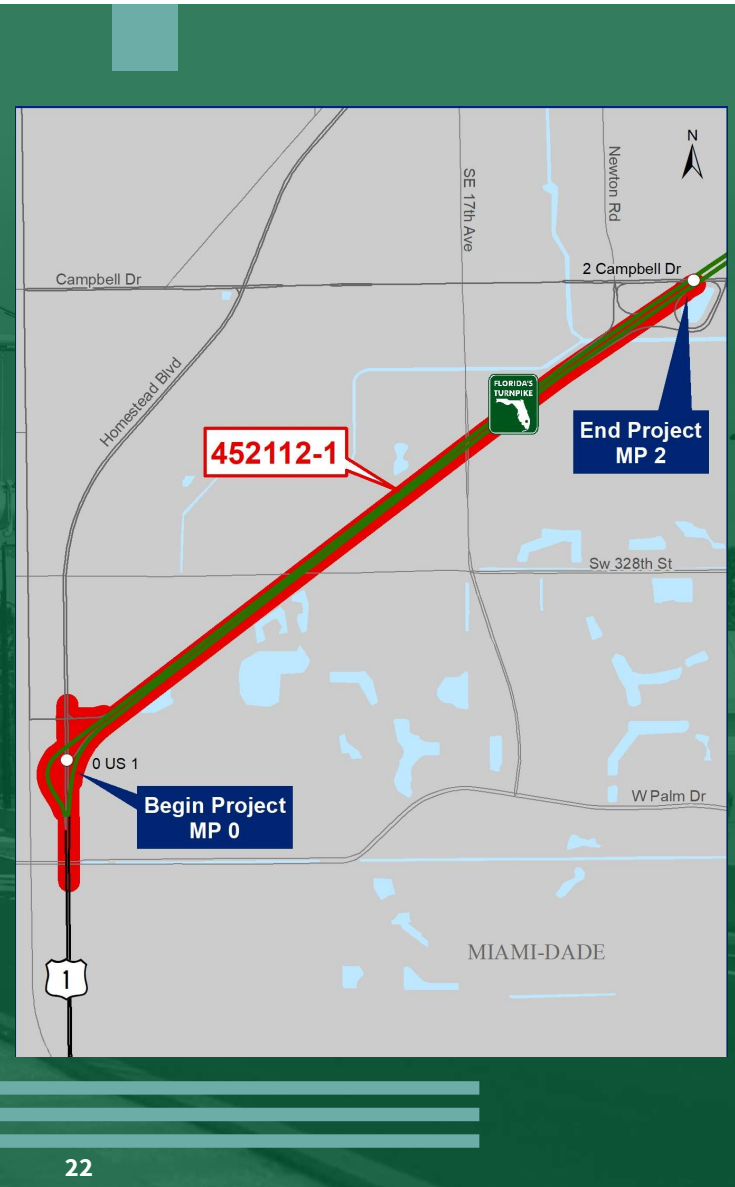
*Dates subject to change*

## TSM&O TURNPIKE MAINLINE (SR 821) – SOUTH OF PALM DR TO CAMPBELL DR (MP 0-2)

PM	Teresa Price (407) 264-3440
FPID(s)	452112-1-32-01
County/Counties	Miami Dade
Anticipated Contract \$	\$2.76M
Anticipated Formal Ad	08/07/2023
Anticipated Contract Execution	01/02/2024
Anticipated Major/Minor Work Types	Major – 3.3 Minor – 3.2, 4.1.1, 4.2.2, 6.2, 6.3.1, 6.3.2, 6.3.3, 7.1, 7.2, 7.3, 8.1, 8.2, 8.4, 9.1, 9.2, 9.4.1

### General Project Description and Key Components

This design project will provide Transportation Systems Management and Operations (TSM&O) improvements along Turnpike Mainline (SR 821) from south of Palm Dr to Campbell Dr (MP 0-2) in Miami Dade County.



## TSM&O IMPROVEMENTS TO SR 50 OCOEE IN ORANGE COUNTY (MP 267B)

PM	Mike Leo (407) 264-3414
FPID(s)	452082-1-32-01
County/Countries	Orange
Anticipated Contract \$	\$1.68M
Anticipated Formal Ad	08/07/2023
Anticipated Contract Execution	01/02/2024
Anticipated Major/Minor Work Types	Major – 3.1 Minor – 4.1.1, 7.1, 7.2, 7.3, 8.1, 8.2, 9.1, 9.2

### General Project Description and Key Components

This design project will provide TSM&O improvements along SR 50 in Orange County, Turnpike Mainline (SR 91) (MP 267B). Improvements include the addition of a right turn lane along SR 50, reconstruction of the sidewalk, retaining wall at the connector ramp, revisions to the eastbound SR 50 ramps, a new traffic signal on SR 50, and milling and resurfacing of eastbound and westbound SR 50 within the project limits. A PD&E for this project is ongoing under FPID 444007-1, which summarizes proposed improvements.

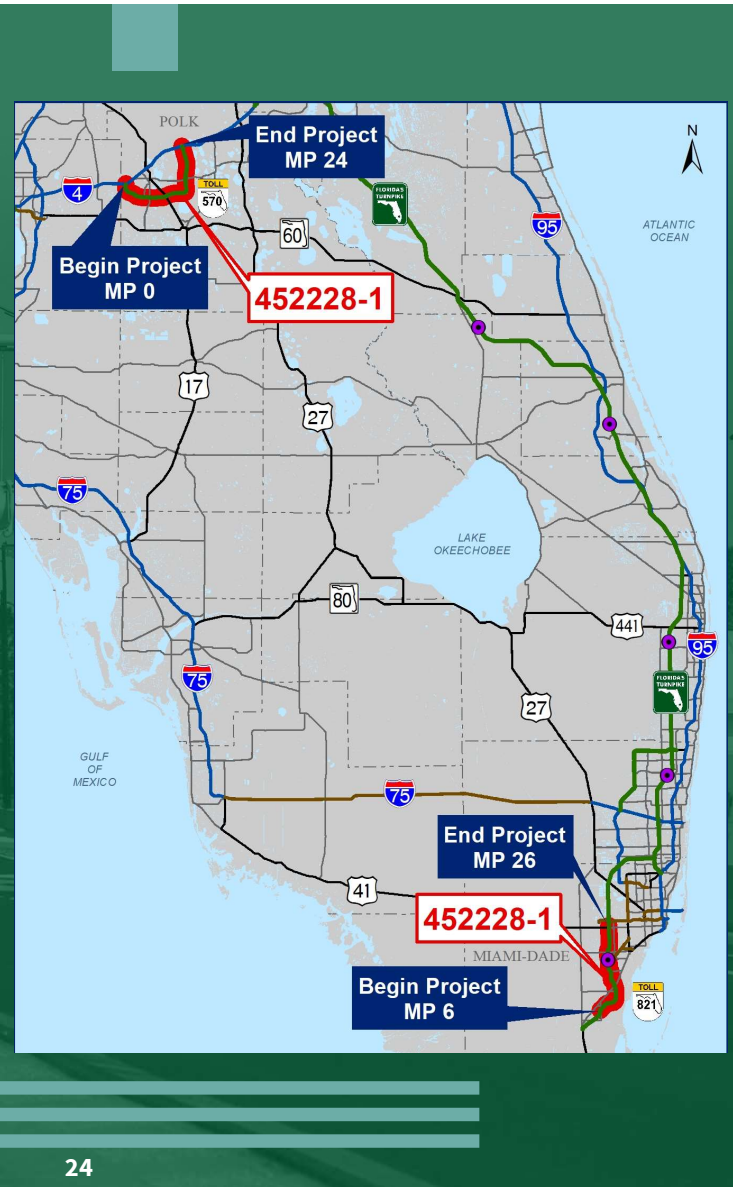


## HPS TO LED LIGHTING CONVERSION TURNPIKE-WIDE PHASE I

PM (Subject to Change)	Jason Christopher (407) 264-3260
FPID(s)	452228-1-32-01
County/Counties	Turnpike Wide
Anticipated Contract \$	\$4.00M
Anticipated Formal Ad	08/07/2023
Anticipated Contract Execution	01/02/2024
Anticipated Major/Minor Work Types	Major – 7.2 Minor – 3.2, 3.3, 7.1, 4.1.1, 8.1, 8.2, 9.1, 9.2, 9.4.1

### General Project Description and Key Components

This design project is Phase I of converting existing HPS lighting to LED Lighting Turnpike-wide, including but not limited to the Polk Parkway (SR570) (MP 0-24) and Turnpike Mainline (SR 91) (MP 6-26).



# Small Business Reserved Contracts

Ad No	Formal Ad	FPID	Project	Selection Method
24803	5/15/2023	449465-1	WIDEN EASTBOUND SR 528 EXIT RAMP TO JOHN YOUNG PKWY (MP 3)	ELOR
24801		446224-2	TSM&O TPK (SR91) GRIFFIN ROAD INTERCHANGE IMPROVEMENTS (MP 54)	
24804		452109-1	SR 407 SAFETY AND ITS IMPROVEMENTS	

*These will be bundled into one (1) Advertisement.*

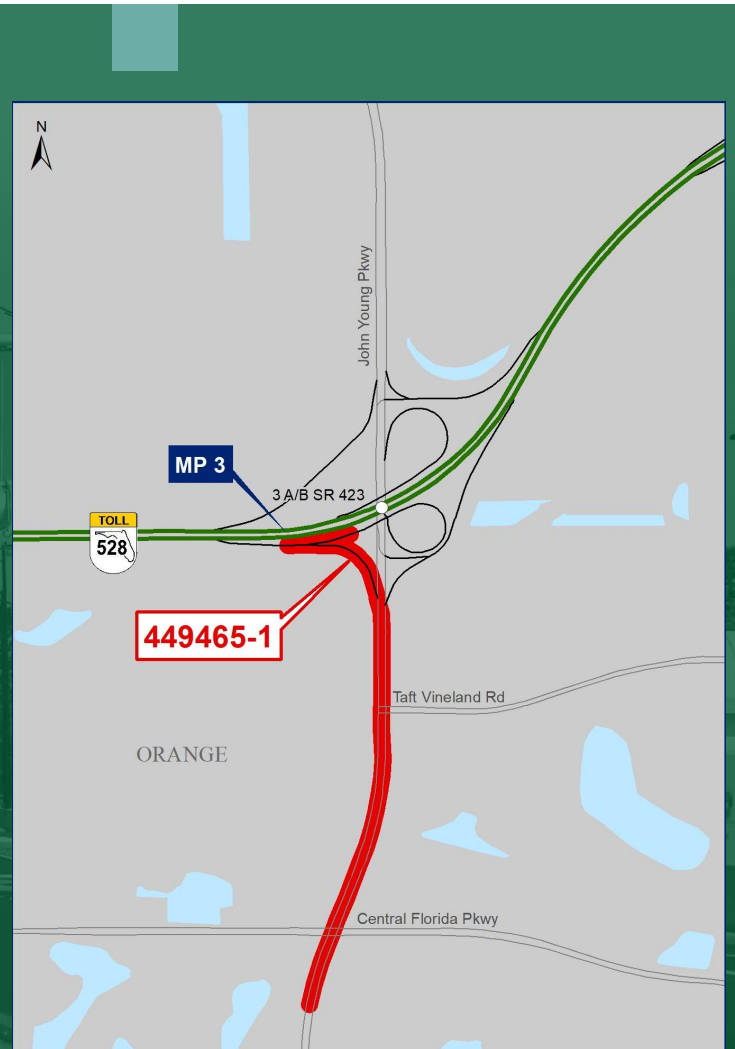
*Dates subject to change*

## WIDEN EASTBOUND SR 528 EXIT RAMP TO JOHN YOUNG PKWY (MP 3)

PM	Christopher Mills (407)264-3436
FPID(s)	449465-1-32-01
County/Counties	Orange
Anticipated Contract \$	\$1.40M
Anticipated Formal Ad	05/15/2023
Anticipated Contract Execution	09/14/2023
Anticipated Major/Minor Work Types	Major – 3.3 Minor – 3.1, 4.1.1, 6.2, 6.3.1, 6.3.2, 6.3.3, 7.1, 7.2, 7.3, 8.1, 8.2, 9.1, 9.2, 9.3, 9.4.1

### General Project Description and Key Components

This design project will widen the eastbound SR 528 exit ramp to John Young Pkwy (MP 3) in Orange County.

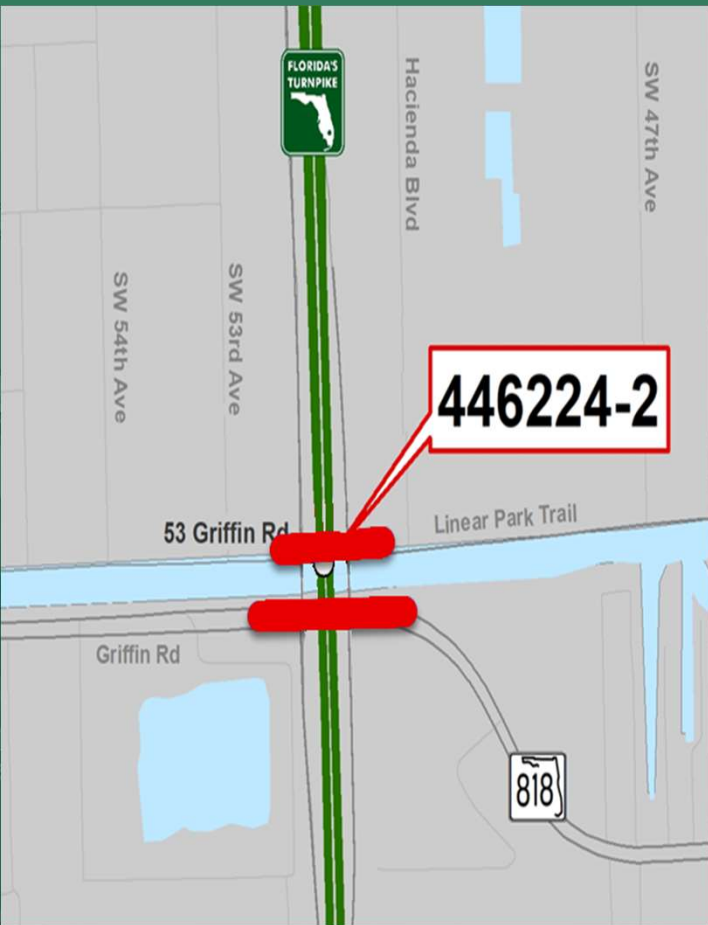


## TSM&O TPK (SR91) GRIFFIN ROAD INTERCHANGE IMPROVEMENTS (MP 54)

PM	Suraj Pamulapati (407) 264-3199
FPID(s)	446224-2-32-01
County/Counties	Broward
Anticipated Contract \$	\$1.02M
Anticipated Formal Ad	05/15/2023
Anticipated Contract Execution	09/14/2023
Anticipated Major/Minor Work Types	Major – 3.2 Minor – 3.1, 4.1.1, 4.1.2, 6.3.1, 6.3.2, 6.3.3, 7.1, 7.2, 7.3, 8.1, 8.2, 8.4, 9.1, 9.2, 9.4.1, 15.0

### General Project Description and Key Components

This TSM&O project will construct Restricted Crossing U-turn (RCUT) intersection concept on Griffin Road and other improvements on adjacent local roads in Broward County.

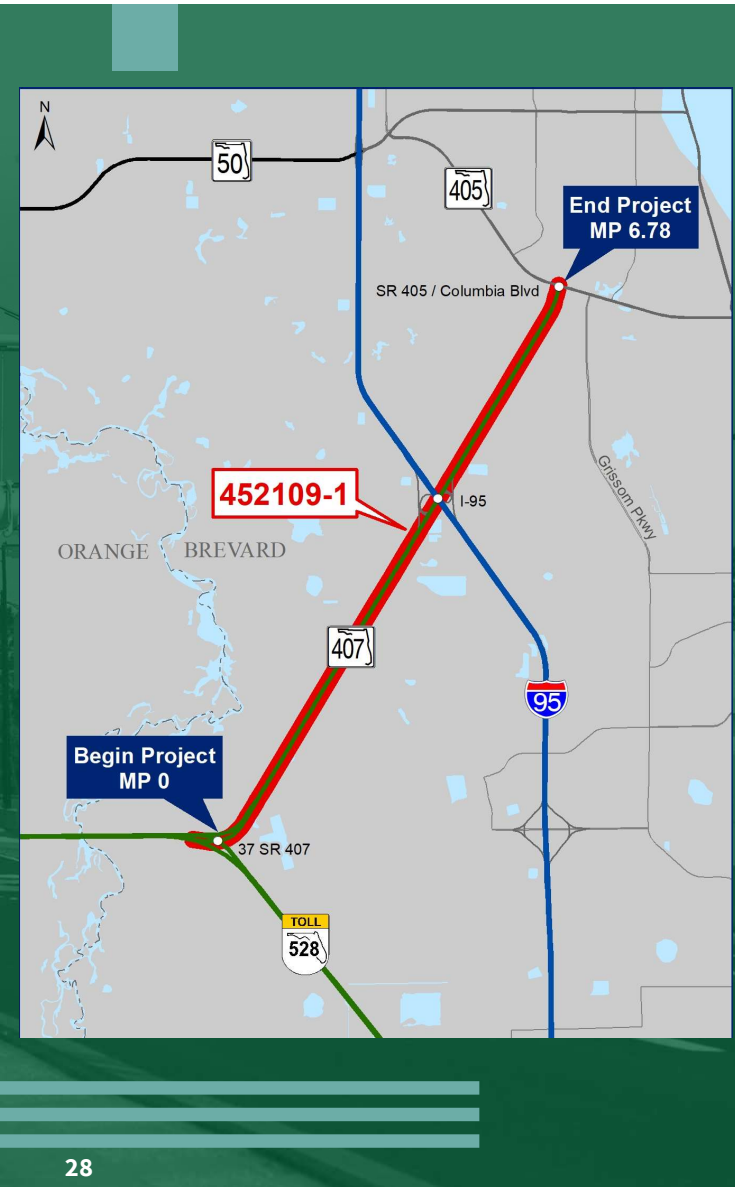


## SR 407 SAFETY AND ITS IMPROVEMENTS


PM (Subject to Change)	Su Hao (407) 264-3189
FPID(s)	452109-1-32-01
County/Counties	Brevard
Anticipated Contract \$	\$0.80M
Anticipated Formal Ad	05/15/2023
Anticipated Contract Execution	09/14/2023
Anticipated Major/Minor Work Types	Major – 3.3 Minor – 3.1, 3.2, 4.1.1, 4.1.2, 6.1, 6.2, 6.3.1, 6.3.2, 6.3.3, 7.1, 7.2, 7.3, 8.1, 8.2, 8.3, 8.4, 9.1, 9.2, 9.4.1

### General Project Description and Key Components

This design project includes safety and ITS improvements along SR 407 from SR 528 to SR 405 (MP 0-6.78) in Brevard County. New Dynamic Message Signs (DMS), Closed Circuit Television (CCTV), and Intelligent Transportation System (ITS) infrastructure is anticipated.





An aerial photograph of a multi-lane highway, likely a turnpike, with several vehicles including a large semi-truck. The image is overlaid with a semi-transparent green rectangle that has a thin white border. The text "Construction Engineering Inspection (CEI) Procurement" is centered within this green area in a white, sans-serif font.

# Construction Engineering Inspection (CEI) Procurement

FPID	Ad #	Formal Ad Date	Project	Est. \$ Amt.
438548-1	24829	4/17/2023	PAINT BRIDGES ON RAMPS AT TURNPIKE MAINLINE (SR 91)/ INTERCHANGE (MP 267)	\$2.40M
438549-2		4/17/2023	PAINT BRIDGES ON SEMINOLE EXPRESSWAY (SR 417) AT RINEHART RD (MP 54.64)	\$0.33M
438549-1		4/17/2023	PAINT BRIDGES AT SEMINOLE EXPRESSWAY (SR 417) (MP 50.3-50.5) US 17/92 AND AIRPORT BLVD	\$0.50M
444402-1	24830	4/17/2023	RESURFACE TURNPIKE MAINLINE (SR 91) IN ST LUCIE COUNTY (MP 169.3-173)	\$0.90M
444403-1		4/17/2023	RESURFACE TURNPIKE MAINLINE (SR 91) IN INDIAN RIVER COUNTY (MP 173-178.3)	\$1.43M
441224-4	24831	5/8/2023	WIDEN TURNPIKE MAINLINE (SR 91) (MP 239-242) AND NEW NOLTE RD INTERCHANGE	\$13.58M
441718-1		5/8/2023	RECONSTRUCT TURNPIKE MAINLINE (SR 91) IN OSCEOLA COUNTY (MP 227.0-235.0)	\$2.45M
446223-1	24832	5/15/2023	TSM&O ADD AUXILIARY LANES TO SOUTH TURNPIKE MAINLINE (SR 91) IN BROWARD COUNTY (MP 47-51)	\$4.30M
446224-1		5/15/2023	TSM&O ADD AUXILIARY LANES TO SOUTH TURNPIKE MAINLINE (SR 91) IN BROWARD COUNTY (MP 51-54)	\$4.50M
437169-6		5/15/2023	TSM&O TURNPIKE MAINLINE (SR 91) AT BOYNTON BEACH BLVD NORTHBOUND RAMPS AND INTERSECTION IMPROVEMENTS (MP 86)	\$0.63M

# CEI (Cont.)

FPID	Ad #	Formal Ad Date	Project	Est. \$ Amt.
435461-1	24833	5/29/2023	WIDEN SAWGRASS (SR 869) ATLANTIC BLVD TO SAMPLE RD (MP 9-12) (6 TO 10)	\$6.70M
442625-1	24834	7/17/2023	WEST PALM BEACH SERVICE PLAZA PARKING IMPROVEMENTS (MP 94)	\$1.99M
406143-5		7/17/2023	WIDEN TURNPIKE MAINLINE (SR 91) WEST PALM BEACH SERVICE PLAZA TO SOUTHERN BLVD (MP 94-98)(4 TO 8)	\$15.30M
417545-1	24835	7/17/2023	WIDEN SEMINOLE EXPRESSWAY (SR 417) FROM ALOMA AVE TO SR 434 (MP 38-44) (4 TO 8)	\$19.83M
433663-1	24836	10/2/2023	SAND LAKE RD/TURNPIKE INTERCHANGE (SR 482/SR 91) (MP 257)	\$9.32M
415927-5	24837	10/30/2023	BRIDGE STRENGTHENING TURNPIKE MAINLINE (SR 91) IN BROWARD COUNTY (MP 73.1) (BRIDGE #860184)	\$0.49M
417132-5		10/30/2023	E-2W CANAL BULKHEAD WALL, N GLADES RD TO N ATLANTIC AVE (MP 76.8-81.9)	\$8.92M
436194-1	24838	11/27/2023	WIDEN TURNPIKE MAINLINE (SR 91), PARTIN SETTLEMENT RD TO OSCEOLA PKWY (CR 522) (MP 243.5-249) (4 TO 8)	\$19.86M
442876-1	24839	1/8/2024	ITS REPLACEMENTS FOR BEACHLINE EAST EXPRESSWAY (SR 528) IN ORANGE AND BREVARD COUNTIES (MP 31-45.7)	\$2.29M

## PAINT BRIDGES TURNPIKE MAINLINE (SR 91)/WESTERN BELTWAY (SR 429) INTERCHANGE (MP 267)

PM	Mark Winter (407) 264-3558
FPID(s)	438548-1-62-01
County/Counties	Orange
Anticipated Contract \$	\$2.40M
Anticipated Formal Ad	4/17/2023
Anticipated Contract Execution	8/30/2023
Anticipated Major/Minor Work Types	10.1

### General Project Description and Key Components

This project includes cleaning and painting the structural steel components and the cleaning and coating (Class 5) of the concrete surfaces of seven bridges and adjacent walls located on or over the Western Beltway (SR 429) and Florida's Turnpike in Orange County.



## PAINT BRIDGES ON SEMINOLE EXPRESSWAY (SR 417) AT RINEHART RD (MP 54.64)

PM	Adam Massimo (407) 264-3370
FPID(s)	438549-2-62-01
County/Counties	Seminole
Anticipated Contract \$	\$0.33M
Anticipated Formal Ad	4/17/2023
Anticipated Contract Execution	8/30/2023
Anticipated Major/Minor Work Types	10.1

### General Project Description and Key Components

This project includes cleaning and painting the structural steel components and the cleaning and coating (Class 5) of the concrete surfaces of two bridges and adjacent walls located on or over the Seminole Expressway (SR 417) in Seminole County.



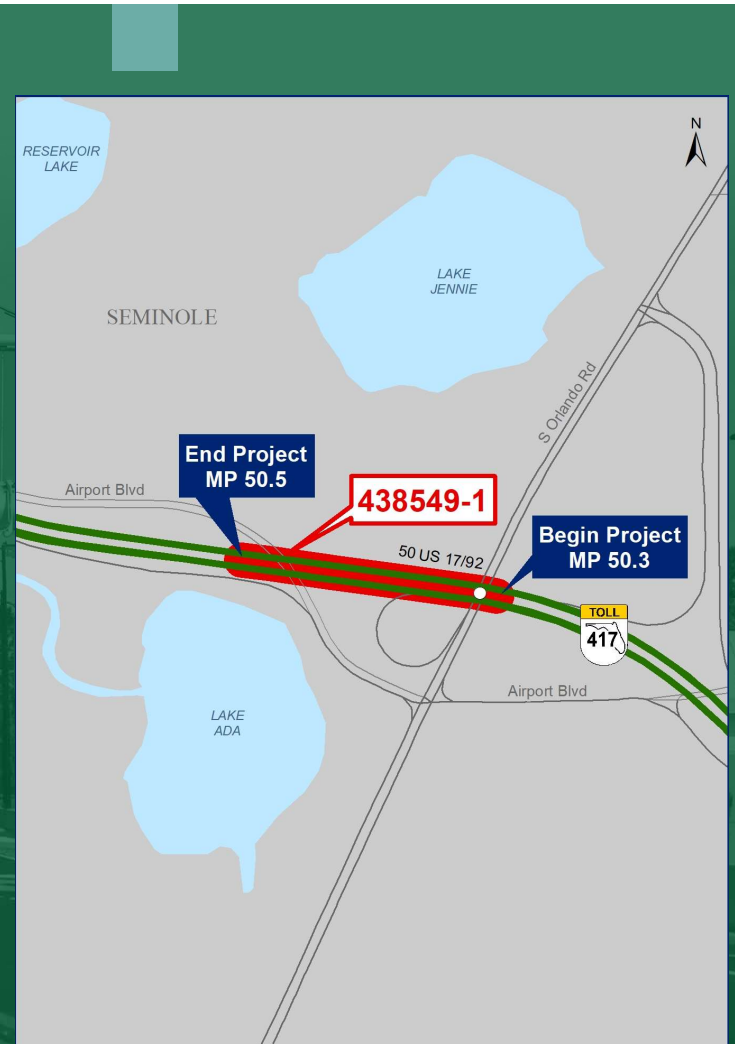


## PAINT BRIDGES SR 417 (MP 50.3-50.5) US 17/92 AND AIRPORT BLVD

PM	Adam Massimo (407) 264-3370
FPID(s)	438549-1-62-01
County/Counties	Seminole
Anticipated Contract \$	\$0.50M
Anticipated Formal Ad	4/17/2023
Anticipated Contract Execution	8/30/2023
Anticipated Major/Minor Work Types	10.1

### General Project Description and Key Components

This project includes cleaning and painting the structural steel components and the cleaning and coating (Class 5) of the concrete surfaces of four bridges and adjacent walls located on or over the Seminole Expressway (SR 417) in Seminole County.



## RESURFACE TURNPIKE MAINLINE (SR 91) IN ST LUCIE COUNTY (MP 169.3-173)

PM	Pablo Rodriguez (954) 934-1296
FPID(s)	444402-1-62-01
County/Counties	St. Lucie
Anticipated Contract \$	\$0.90M
Anticipated Formal Ad	4/17/2023
Anticipated Contract Execution	8/30/2023
Anticipated Major/Minor Work Types	10.1

### General Project Description and Key Components

This project consists of the resurfacing and safety improvements on the Turnpike Mainline (SR 91) from MP 169.3-173 in St Lucie County. The main objective of the project is to extend the life of the existing pavement through milling and resurfacing of the southbound and northbound lanes, inside and outside shoulders, and paved median. Safety improvements include cross-slope correction, drop-off repair, and guardrail adjustments.

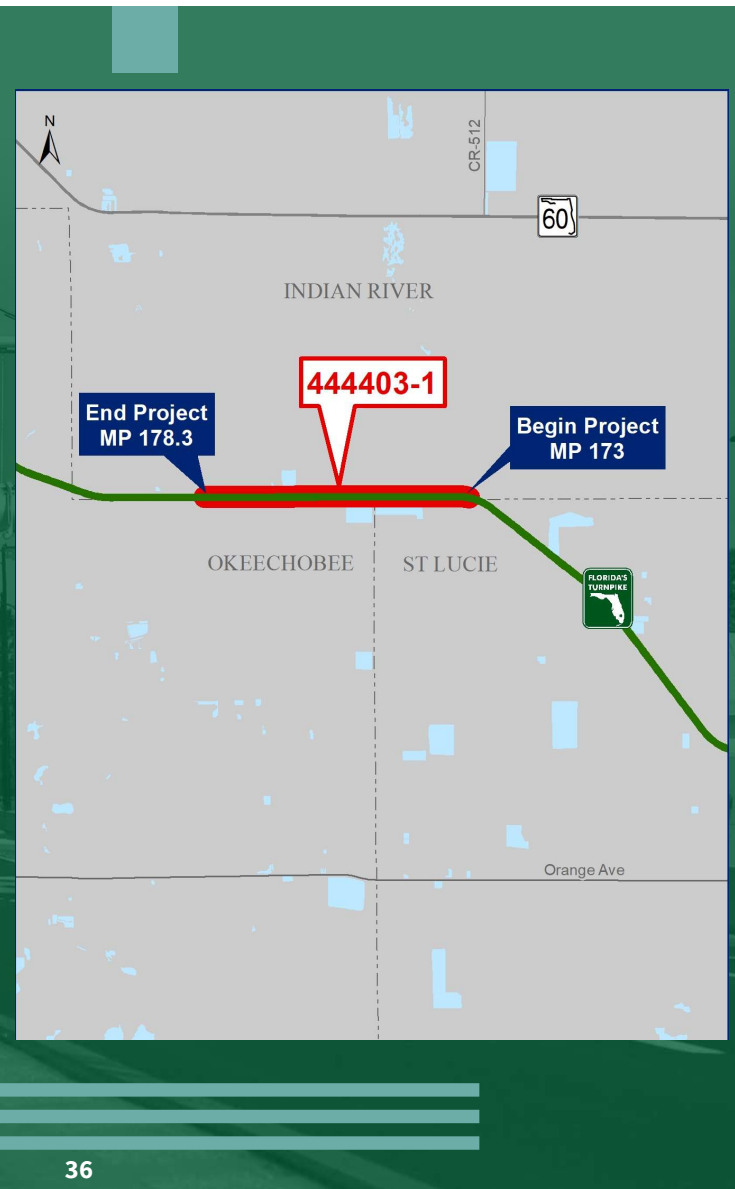


## RESURFACE TURNPIKE MAINLINE (SR 91) IN INDIAN RIVER COUNTY (MP 173-178.3)

PM	Pablo Rodriguez (954) 934-1296
FPID(s)	444403-1-62-01
County/Counties	Indian River
Anticipated Contract \$	\$1.43M
Anticipated Formal Ad	4/17/2023
Anticipated Contract Execution	TBD
Anticipated Major/Minor Work Types	8/30/2023

### General Project Description and Key Components

This project consists of the resurfacing and safety improvements on the Turnpike Mainline (SR 91) from MP 173-178.3 in Indian River County. The main objective of the project is to extend the life of the existing pavement through milling and resurfacing of the southbound and northbound lanes, inside and outside shoulders, and paved median. Safety improvements include cross-slope correction, drop-off repair, and guardrail adjustments.

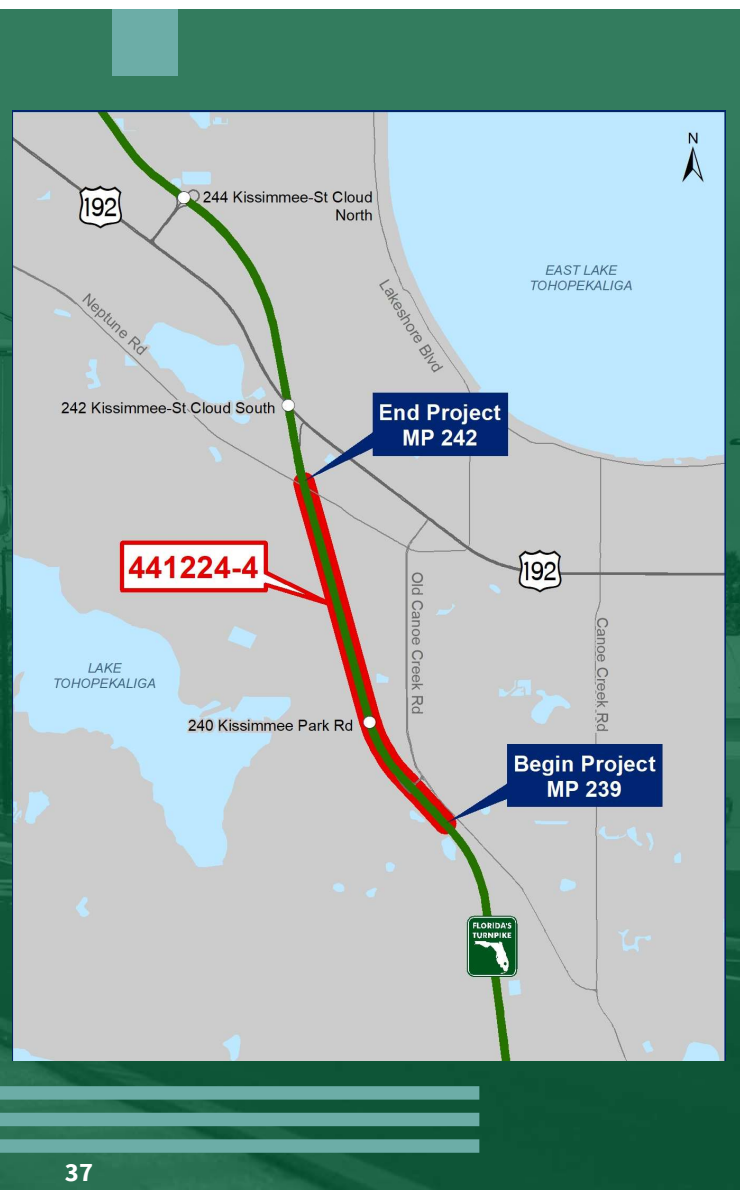


## WIDEN TURNPIKE MAINLINE (SR 91) (MP 239-242) AND NEW NOLTE RD INTERCHANGE – DESIGN BUILD

PM	Monica Sweeney (407) 264-3020
FPID(s)	441224-4-62-01
County/Counties	Osceola
Anticipated Contract \$	\$13.58M
Anticipated Formal Ad	5/8/2023
Anticipated Contract Execution	9/20/2023
Anticipated Major/Minor Work Types	10.1

### General Project Description and Key Components

This project consists of widening the Mainline from south of Kissimmee Park Rd to south of US 192 and constructing a new diverging diamond interchange between Turnpike Mainline (SR 91) and an extension of Nolte Rd. The project will expand the existing 4-lanes on the Mainline into an 8-lane section. The interchange will include two new bridges for Nolte Rd over Turnpike Mainline (SR 91) and Wrong Way Vehicle Detection System.

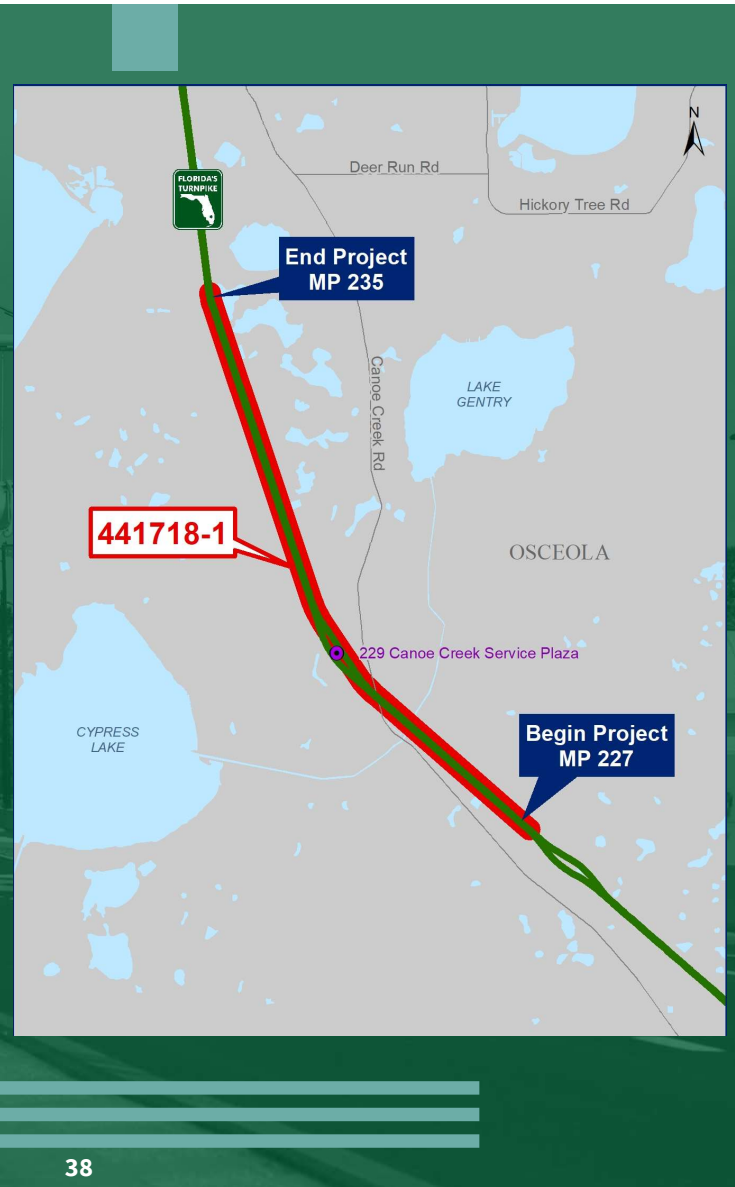


## RECONSTRUCT TURNPIKE MAINLINE (SR 91) IN OSCEOLA COUNTY (MP 227-235)

PM	Adam Massimo (407) 264-3370
FPID(s)	441718-1-62-01
County/Counties	Osceola
Anticipated Contract \$	\$2.45M
Anticipated Formal Ad	5/8/2023
Anticipated Contract Execution	9/20/2023
Anticipated Major/Minor Work Types	10.1

### General Project Description and Key Components

This project resurfaces a segment of Turnpike Mainline (SR 91) from MP 227-235. Work includes milling and resurfacing, superelevation and cross-slope corrections, guardrail installation, signing and pavement marking improvements.



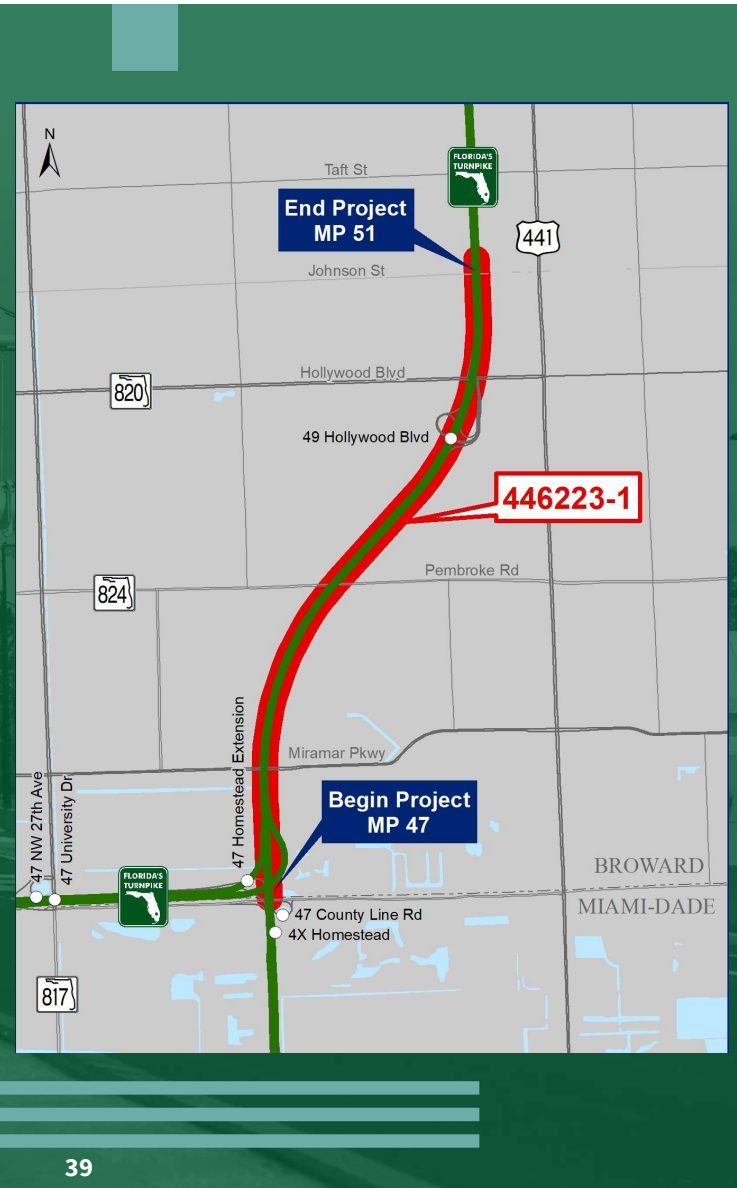


## TSM&O ADD AUXILIARY LANES TO SOUTH TURNPIKE MAINLINE (SR 91) IN BROWARD COUNTY (MP 47-51) (6 TO 8)

PM	Pacifico Castillo (954) 934-1118
FPID(s)	446223-1-62-01
County/Counties	Broward
Anticipated Contract \$	\$4.30M
Anticipated Formal Ad	5/15/2023
Anticipated Contract Execution	9/27/2023
Anticipated Major/Minor Work Types	10.1

### General Project Description and Key Components

The proposed improvements consist of widening Turnpike Mainline (SR 91) from six to eight lanes from the Turnpike extension (MP 47.0) to north of Johnson St (MP 51.0); however, the existing bridges will not be modified. The project also includes the construction of noise walls, drainage improvements, new roadway lighting, signing, and pavement markings. The exit ramps at the Hollywood Blvd interchange will be modified, and a new mast arm traffic signal will be added at the northbound exit ramp.

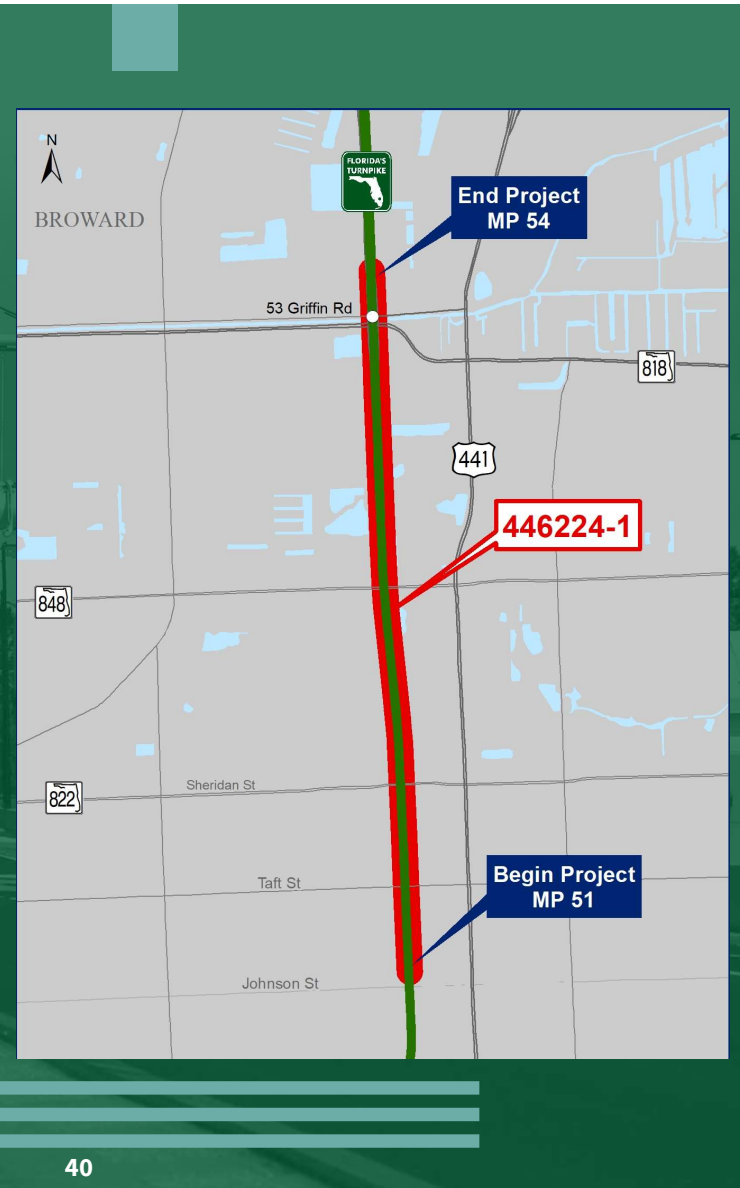


## TSM&O ADD AUXILIARY LANES TO SOUTH TURNPIKE MAINLINE (SR 91) IN BROWARD COUNTY (MP 51-54) (6 TO 8)

PM	Pacifico Castillo (954) 934-1118
FPID(s)	446224-1-62-01
County/Counties	Broward
Anticipated Contract \$	\$4.90M
Anticipated Formal Ad	5/15/2023
Anticipated Contract Execution	9/27/2023
Anticipated Major/Minor Work Types	10.1

### General Project Description and Key Components

The proposed improvements consist of widening Turnpike Mainline (SR 91) from six to eight lanes from north of Johnson St (MP 51.0) to north of Griffin Rd (MP 54.0); however, the existing bridges will not be modified. The project also includes the construction of noise walls, drainage improvements, new roadway lighting, signing, and pavement markings.





## TSM&O TURNPIKE MAINLINE (SR 91) AT BOYNTON BEACH BLVD NORTHBOUND RAMPS AND INTERSECTION (MP 86)

PM	Allen Caceres (954) 934-1134
FPID(s)	437169-6-62-01
County/Counties	Palm Beach
Anticipated Contract \$	\$0.60M
Anticipated Formal Ad	5/15/2023
Anticipated Contract Execution	9/27/2023
Anticipated Major/Minor Work Types	10.1

### General Project Description and Key Components

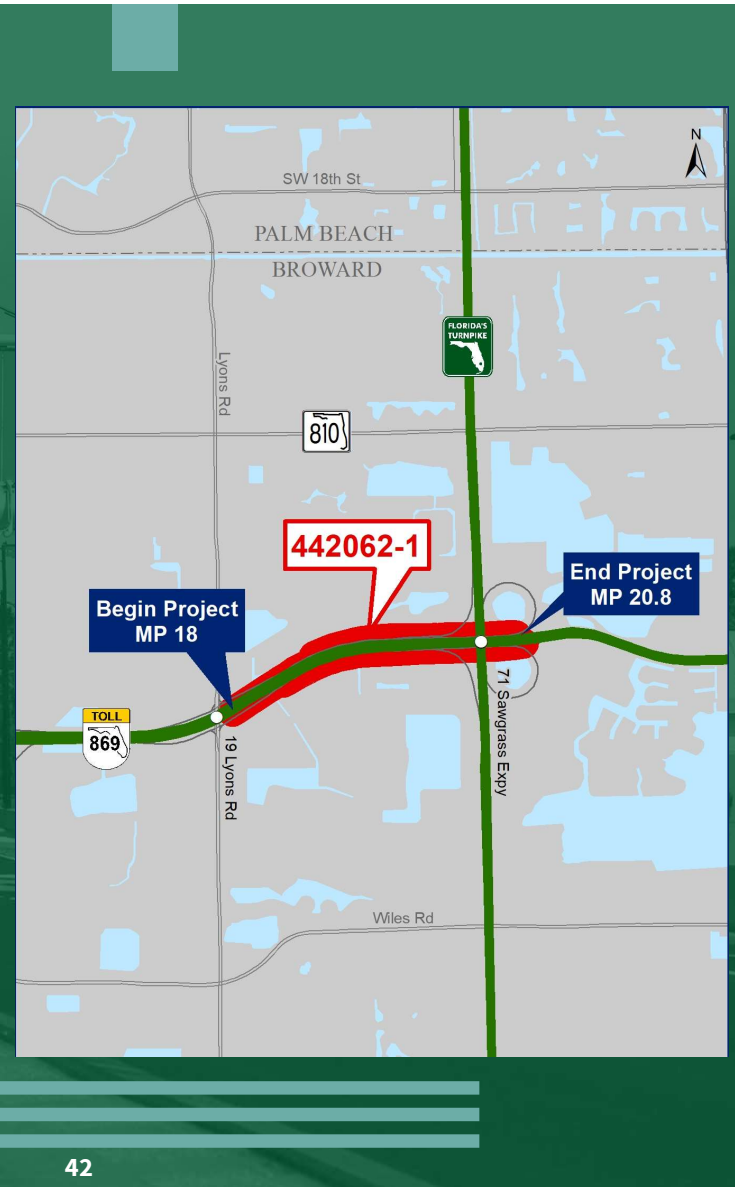
This project consists of extending the northbound exit auxiliary lane and widening the northbound exit ramp and bridge to accommodate a two-lane exit. The project limits include the northbound exit, entrance ramps at the Boynton Beach Blvd interchange, and improvements on Boynton Beach Blvd. An additional westbound left turn lane will be added on Boynton Beach Blvd to the northbound entrance ramp.

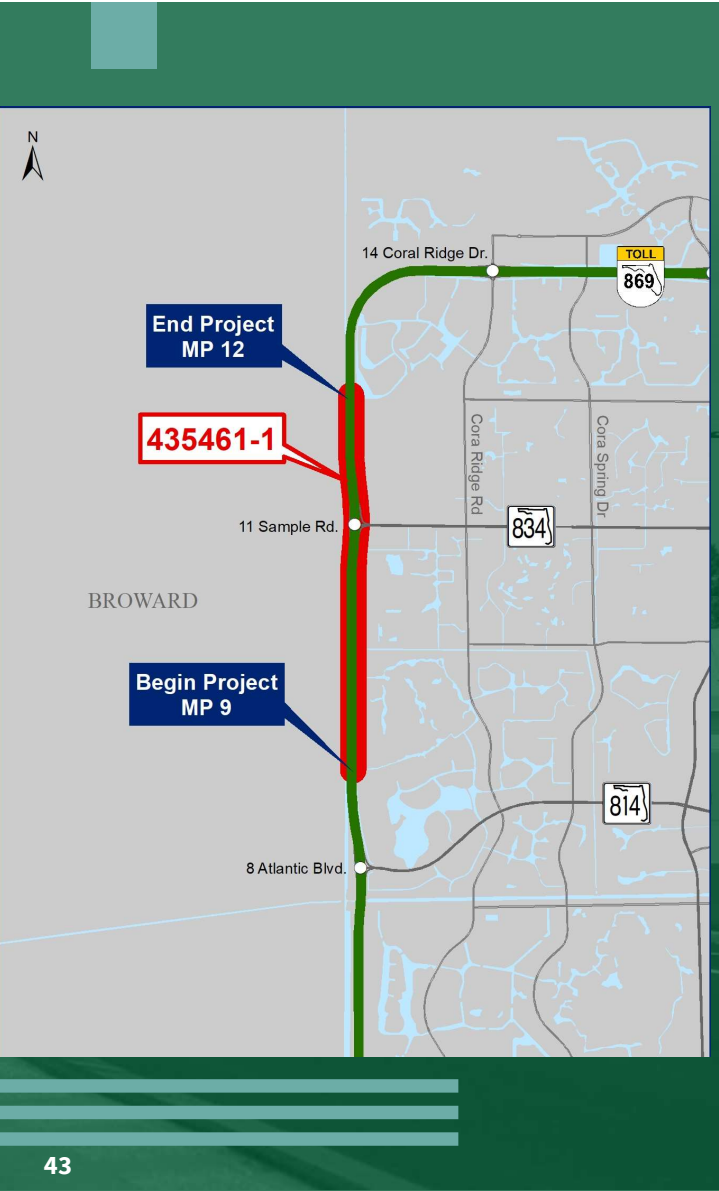
## RESURFACE SAWGRASS EXPRESSWAY (SR 869) (MP 18.0-20.8)

PM	Jim Lynch (954) 953-2688
FPID(s)	442062-1-62-01
County/Counties	Broward
Anticipated Contract	\$1.56M
Anticipated Formal Ad	5/29/2023
Anticipated Contract Execution	10/11/2023
Anticipated Major/Minor Work Types	10.1

### General Project Description and Key Components

This project consists of the milling and resurfacing on the Sawgrass Expressway (SR 869) corridor Mainline lanes and ramps from just west of US 441/SR 7 to just west of Powerline Rd (SR 845). Other work includes cross-slope and superelevation corrections, regrading roadside slopes, new guardrail installations, ADA compliant curb ramps, pier protection on US 441 for bridges #860502 and #860503, signage and signalization improvements.





**WIDEN SAWGRASS EXPRESSWAY (SR 869) FROM ATLANTIC BLVD TO SAMPLE RD (MP 9-12) (6 TO 10)**

PM	Jim Lynch (954) 934-1123
FPID(s)	435461-1-62-01
County/Counties	Broward
Anticipated Contract \$	\$6.70M
Anticipated Formal Ad	5/29/2023
Anticipated Contract Execution	10/11/2023
Anticipated Major/Minor Work Types	10.1

**General Project Description and Key Components**

Widening of Sawgrass Expressway (SR 869) will be from six to ten lanes, from north of Atlantic Blvd (SR 814) to north of Sample Rd (SR 834). Work includes pavement widening, reconstruction, milling and resurfacing, drainage, lighting, signalization, and Intelligent Transportation System (ITS). Other improvements include the widening of Coral Ridge Dr, Coral Springs Dr, University Dr, and Riverside Dr and new Diverging Diamond interchanges (DDI) at Sample Rd (Partial) and Coral Ridge Rd.

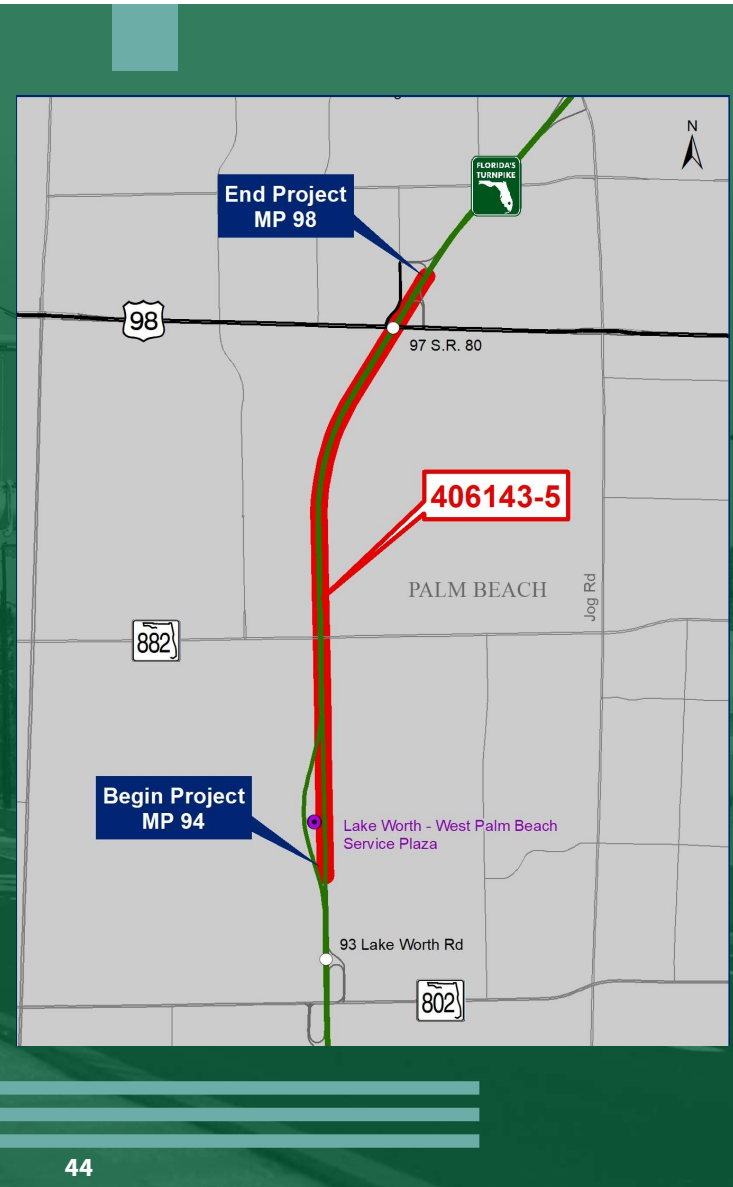


## WIDEN TURNPIKE MAINLINE (SR 91) WEST PALM BEACH SERVICE PLAZA TO SOUTHERN BLVD (MP 94-98)(4 TO 8)

PM	Pablo Rodriguez (954) 934-1296
FPID(s)	406143-5-62-01
County/Counties	Palm Beach
Anticipated Contract \$	\$15.30M
Anticipated Formal Ad	7/17/2023
Anticipated Contract Execution	11/29/2023
Anticipated Major/Minor Work Types	10.1

### General Project Description and Key Components

From MP 94-98, the project widens a segment of Turnpike Mainline (SR 91) from the West Palm Beach Service Plaza to Southern Blvd/US 98/SR 80. The widening will increase the number of travel lanes from four to eight. Work includes pavement widening, reconstruction, milling and resurfacing, bridge improvements/replacements, stormwater drainage improvements, noise walls, and interchange improvements at Southern Blvd/US 98/SR 80 (MP 98).

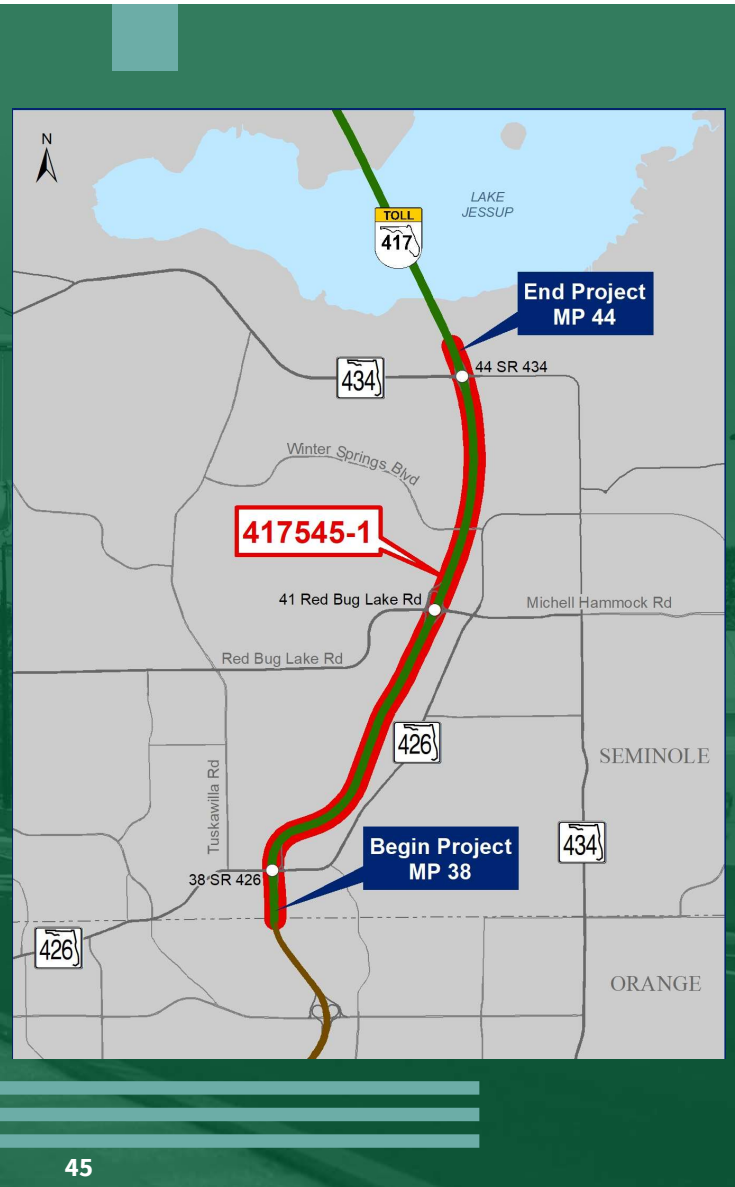


## WIDEN SEMINOLE EXPRESSWAY (SR 417) FROM ALOMA AVE TO SR 434 (MP 38-44) (4 TO 8) – DESIGN BUILD

PM	Virgil Rook (407) 264-3841
FPID(s)	417545-1-62-01
County/Countries	Seminole
Anticipated Contract \$	\$19.80M
Anticipated Formal Ad	7/17/2023
Anticipated Contract Execution	11/29/2023
Anticipated Major/Minor Work Types	10.1

### General Project Description and Key Components

The proposed improvements of this Design Build project will widen the Seminole Expressway (SR 417) from 4 to 8 lanes from the Orange/Seminole County Line to north of Aloma Ave., as well as interchange improvements at SR 434, Red Bug Lake Rd, and Aloma Ave.

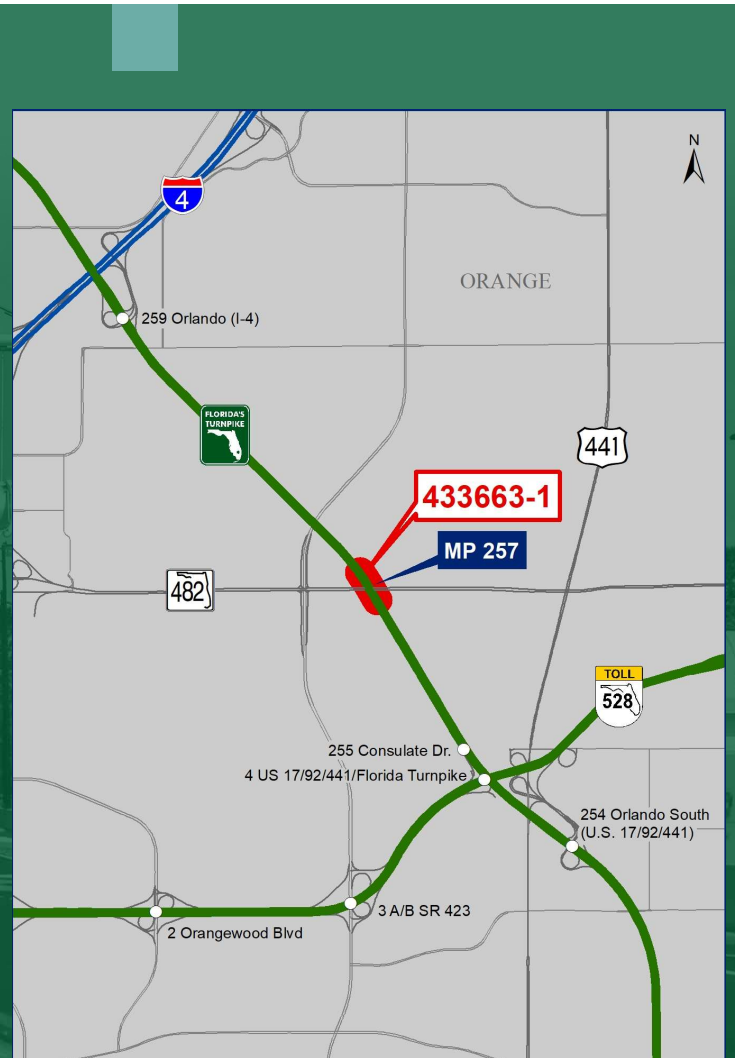


## SAND LAKE RD (SR 482)/TURNPIKE INTERCHANGE (SR 91) (MP 257)

PM	Adam Massimo (4) 883-1315
FPID(s)	433663-1-62-01
County/Counties	Orange
Anticipated Contract \$	\$9.32M
Anticipated Formal Ad	10/2/2023
Anticipated Contract Execution	2/14/2024
Anticipated Major/Minor Work Types	10.1

### General Project Description and Key Components

The project constructs a new full interchange on Turnpike Mainline (SR 91) at Sand Lake Rd (SR 482). Work includes reconstructing the Sand Lake Rd bridges over Turnpike Mainline (SR 91), turn lane improvements at Sand Lake Rd and Presidents Dr intersection, and new sidewalks along both sides of Sand Lake Rd from John Young Pkwy (CR 423) to Presidents Dr.



## BRIDGE STRENGTHENING TURNPIKE Mainline (SR 91) (MP 73.1)

PM	Karthikeyan Subramanian (954) 934-1136
FPID(s)	415927-5-62-01
County/Counties	Broward
Anticipated Contract \$	\$0.50M
Anticipated Formal Ad	10/30/2023
Anticipated Contract Execution	3/13/2024
Anticipated Major/Minor Work Types	10.1

### General Project Description and Key Components

The intent of this project is to strengthen bridge #860184 on the Turnpike Mainline (SR 91) in Broward County (MP 73.1).

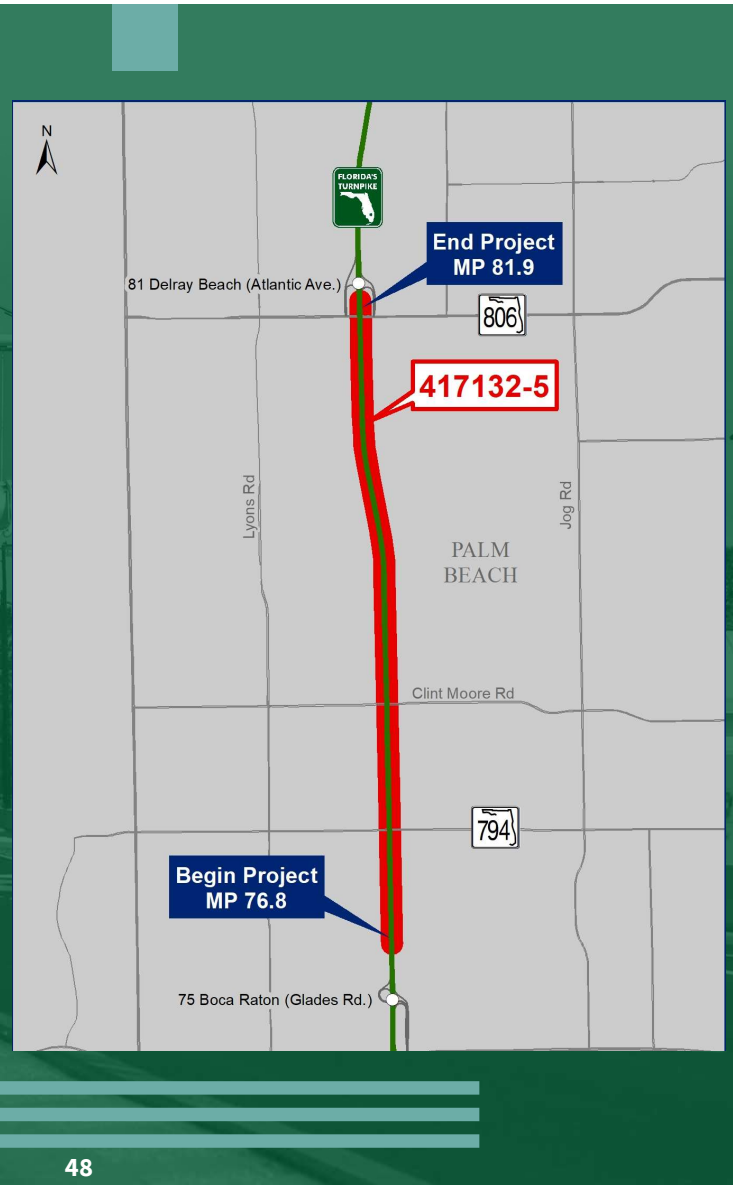


## E-2W CANAL BULKHEAD WALL ON N GLADES RD TO N ATLANTIC AVE (MP 76.8-81.9)

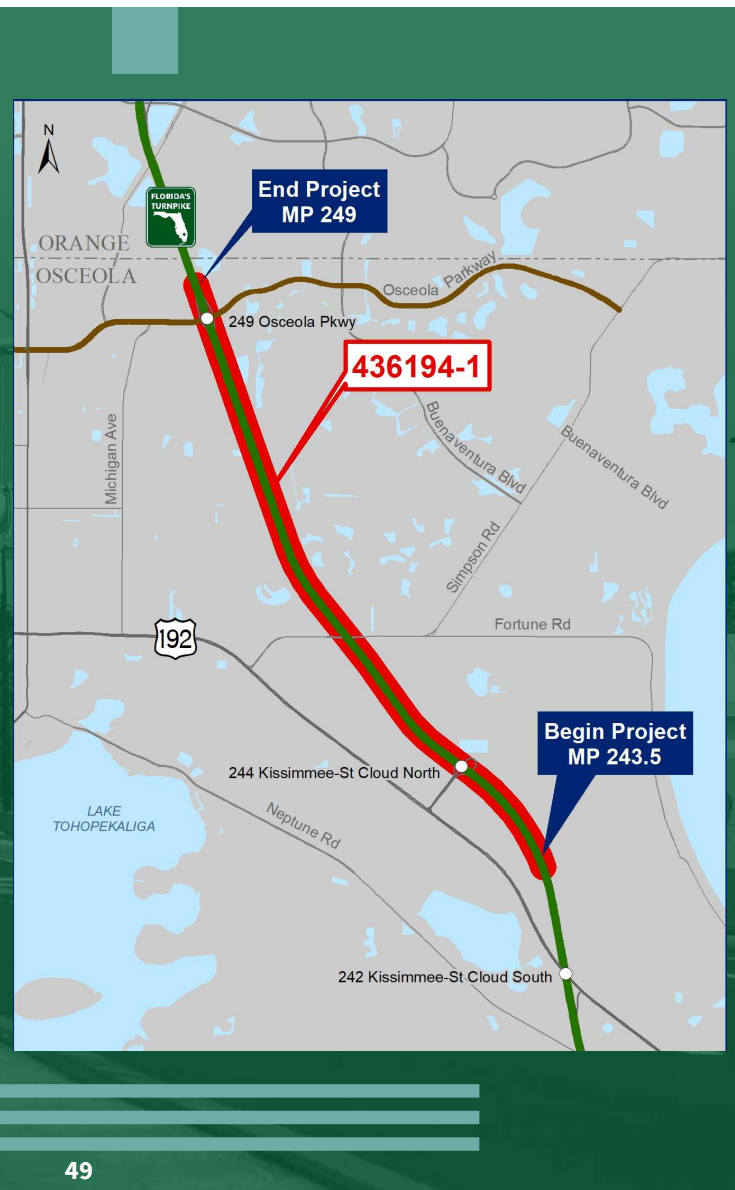
PM	Pablo Rodriguez (646) 522-4613
FPID(s)	417132-5-62-01
County/Counties	Palm Beach
Anticipated Contract \$	\$8.92M
Anticipated Formal Ad	10/30/2023
Anticipated Contract Execution	3/13/2024
Anticipated Major/Minor Work Types	10.1

### General Project Description and Key Components

The proposed improvements consist of stabilizing the Lake Worth Drainage District (LWDD) E-2W canal bank to support the future widening of Turnpike Mainline (SR 91) (FPID 417132-1). A bulkhead wall will be constructed from north of Glades Rd (SR 808) to north of Atlantic Ave (SR 806).







## WIDEN TURNPIKE MAINLINE (SR 91) PARTIN SETTLEMENT RD TO OSCEOLA PKWY (MP 243.5-249) (4 TO 8)

PM	Virgil Rook (407) 264-3841
FPID(s)	436194-1-62-01
County/Counties	Osceola
Anticipated Contract \$	\$19.8M
Anticipated Formal Ad	11/27/2023
Anticipated Contract Execution	4/10/2024
Anticipated Major/Minor Work Types	10.1

### General Project Description and Key Components

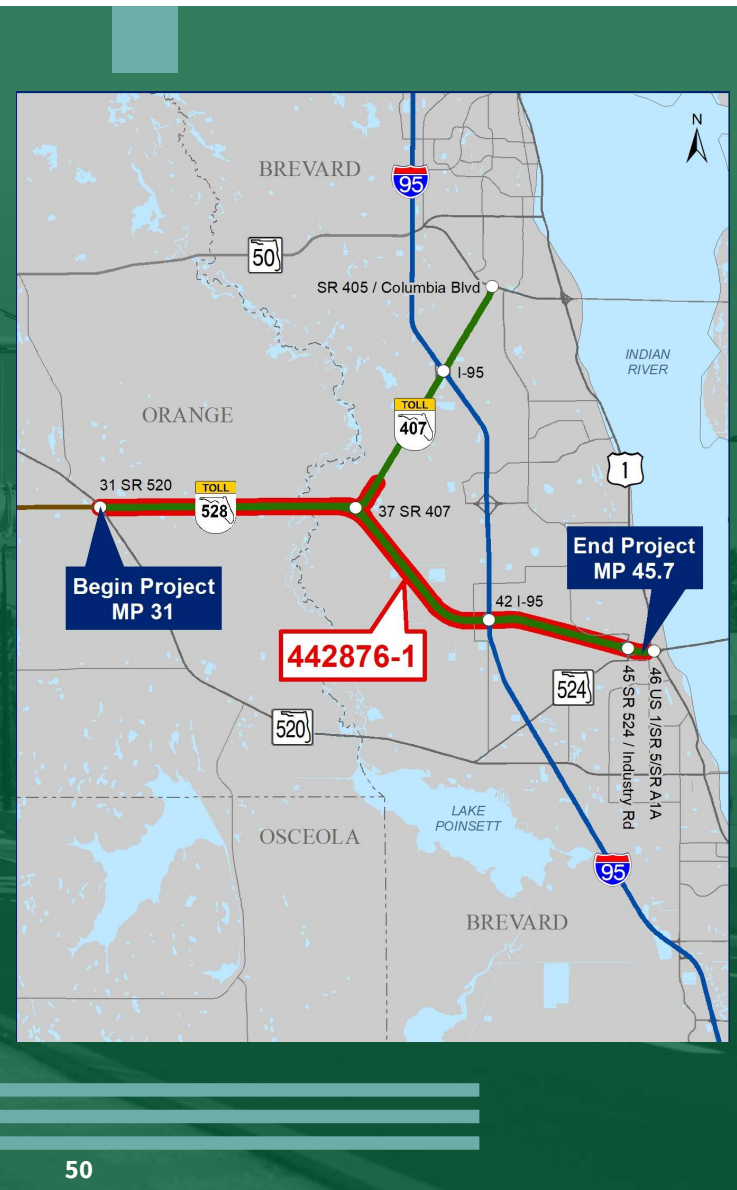
This project widens Turnpike Mainline (SR 91) from 4 to 8 lanes, from Partin Settlement Rd to north of Osceola Pkwy (CR 522). Work includes pavement widening, reconstruction, milling and resurfacing, bridge improvements/replacements, roadside safety enhancements, and interchange improvements at Osceola Pkwy (MP 249).

## ITS REPLACEMENTS FOR BEACHLINE EAST EXPRESSWAY (SR 528) (MP 31-MP 45)

PM	Mark F Winter (916) 477-0218
FPID(s)	442876-1-62-01
County/Counties	Brevard and Orange
Anticipated Contract \$	\$2.29M
Anticipated Formal Ad	1/8/2024
Anticipated Contract Execution	5/22/2024
Anticipated Major/Minor Work Types	10.1

### General Project Description and Key Components

This project includes replacing the Intelligent Transportation System (ITS) along the Beachline East Expressway (SR 528) in Orange and Brevard Counties. The project consists of the installation of a Microwave Detection System (MVDS), Dynamic Message Signs (DMS), Roadway Weather Information System (RWIS), Closed Circuit Television (CCTV), Bluetooth 9BT, Master Hubs, communication network and power infrastructure for a complete ITS System (MP 31-45.7).



An aerial photograph of a multi-lane highway, likely the Florida Turnpike, with a green overlay and a white border. The text "Tentative FY 2025 Consultant Opportunities" is centered in white. The highway has several lanes in both directions, with a large truck visible in the foreground. The surrounding area includes trees and some buildings in the distance.

# Tentative FY 2025 Consultant Opportunities

# PD & E Studies

FPID	Project	Anticipated \$
444006-1	PD&E WIDEN TURNPIKE MAINLINE (SR 91) FROM SOUTH OF SAND LAKE RD TO SOUTH OF SR 408 (MP 257-263)	\$4.20M



# Design

FPID	Project	Anticipated \$
435788-1 435788-2	WIDEN TURNPIKE MAINLINE (SR 91) LAKE/SUMTER COUNTY LINE TO US 301 INTERCHANGE (MP 297.9-304.5) AND WIDEN TURNPIKE MAINLINE (SR 91) FROM CR 470 INTERCHANGE TO LAKE/SUMTER COUNTY LINE (MP 297.3-297.9) (4 TO 8)	\$15.86M
446218-1	WIDEN TURNPIKE MAINLINE (SR 91) FROM SR 706 TO MARTIN COUNTY LINE (MP 117-117.7) (4 TO 8)	\$2.00M
446219-1	WIDEN TURNPIKE MAINLINE (SR 91) FROM PALM BEACH COUNTY LINE TO I-95 CONNECTOR (MP 117.7-125) (4 TO 8)	\$14.55M
446220-1	TURNPIKE MAINLINE (SR 91) INTERCHANGE IMPROVEMENTS AT SW PORT ST LUCIE BLVD (MP 143)	\$4.30M
446332-1	WIDEN TURNPIKE MAINLINE (SR 91) FROM I-95 CONNECTOR TO THOMAS B MANUEL BRIDGE (MP 125-131) (4 TO 8)	\$10.76M
446618-1	THOMAS B MANUEL BRIDGE REPLACEMENT (SOUTHBOUND ONLY) (MP 131.2)	\$3.40M
451421-1	WIDEN CENTRAL POLK PARKWAY (SR 570B) FROM US 27 TO CR 546 (6 LANES)	\$32.00M
451364-1	RESURFACE TURNPIKE MAINLINE (SR 91) IN BROWARD COUNTY (MP 54.2-57.3)	\$1.40M
451365-1	RESURFACE SUNCOAST PARKWAY (SR 589) IN PASCO COUNTY (MP 28.5-37.3)	\$1.42M
451366-1	RESURFACE VETERANS EXPRESSWAY (SR 589) IN HILLSBOROUGH COUNTY (MP 1.4 -17.5)	\$3.10M
447701-1	RESURFACE SUNCOAST (SR 589) IN HERNANDO COUNTY (MP 37.3-44.5)	\$1.55M



# Important Web Links

## FTE: Consultant Corner

<https://floridasturnpike.com/business-opportunities/consultant-corner/>

## FDOT: Procurement – Statewide CAP

<https://www.fdot.gov/procurement/cap.shtm>

## FDOT: Procurement – Advertisements

<https://www.fdot.gov/procurement/Advertisements.shtm>

## FTE Design Website

<http://floridasturnpike.com/design.html>

# FTE Contacts

- Justin Hall – Interim Director of Transportation Development  
justin.hall@dot.state.fl.us
- Stephanie Sharp, PE – District Program Management Administrator  
stephanie.sharp@dot.state.fl.us
- Brianna Myers, CPM – District Work Program Administrator  
brianna.myers@dot.state.fl.us
- Karen Akers, PE – CEI Manager  
karen.akers@dot.state.fl.us