



## Construction Alert



### Weekend Traffic Shift and Full Closures at Florida's Turnpike and Okeechobee Road Interchange in Miami-Dade County

Florida's Turnpike Enterprise is scheduled to shift traffic on westbound Okeechobee Road/US 27 underneath Florida's Turnpike/State Road (SR) 821 and perform closures of select movements at the Florida's Turnpike and Okeechobee Road interchange this weekend. This traffic shift and closures are necessary to allow crews to perform bridge construction activities at the interchange. The following closures are scheduled to take place over the weekend **from 10 p.m. Friday, June 2, to 5 a.m. Monday, June 5:**

#### **Northbound Florida's Turnpike/SR 821 exit ramp to Okeechobee Road/US 27 (Exit 35)**

##### **Detour information:**

- Northbound Florida's Turnpike/SR 821 traffic wishing to access Okeechobee Road/US 27 (Exit 35) will be directed to exit at Flagler Station Boulevard/NW 106 Street (Exit 34) and travel east on NW 106 Street/NW 116 Way to access Okeechobee Road.

#### **Southbound Florida's Turnpike/SR 821 exit ramp to eastbound Okeechobee Road/US 27 (Exit 35)**

##### **Detour information:**

- Southbound Florida's Turnpike/SR 821 traffic wishing to access eastbound Okeechobee Road/US 27 (Exit 35) will be directed to exit at Okeechobee Road/US 27 (Exit 35), travel west on Okeechobee Road to NW 117 Avenue and perform a U-turn to access eastbound Okeechobee Road.

***Please note, access from southbound Florida's Turnpike to westbound Okeechobee Road will remain open during the weekend operation.***

#### **Southbound Florida's Turnpike/SR 821 entrance ramp from eastbound Okeechobee Road/US 27**

##### **Detour information:**

- Eastbound Okeechobee Road/US 27 traffic wishing to access southbound Florida's Turnpike will be directed to NW 138 Street and perform a U-turn and travel west on Okeechobee Road to access southbound Florida's Turnpike.

#### **Southbound Florida's Turnpike/SR 821 entrance ramp from NW 118 Avenue**

##### **Detour information:**

- NW 118 Avenue traffic wishing to access southbound Florida's Turnpike will be directed to travel east on Okeechobee Road/US 27 to NW 138 Street, perform a U-turn and travel west on Okeechobee Road to access southbound Florida's Turnpike.

### Public Information

#### **Yasir Mercado**

Community Outreach Specialist  
954-934-1138 – or – 1-800-749-PIKE

[Yasir.Mercado@dot.state.fl.us](mailto:Yasir.Mercado@dot.state.fl.us)

[www.FloridasTurnpike.com](http://www.FloridasTurnpike.com) • [twitter.com/FloridaTurnpike](https://twitter.com/FloridaTurnpike)



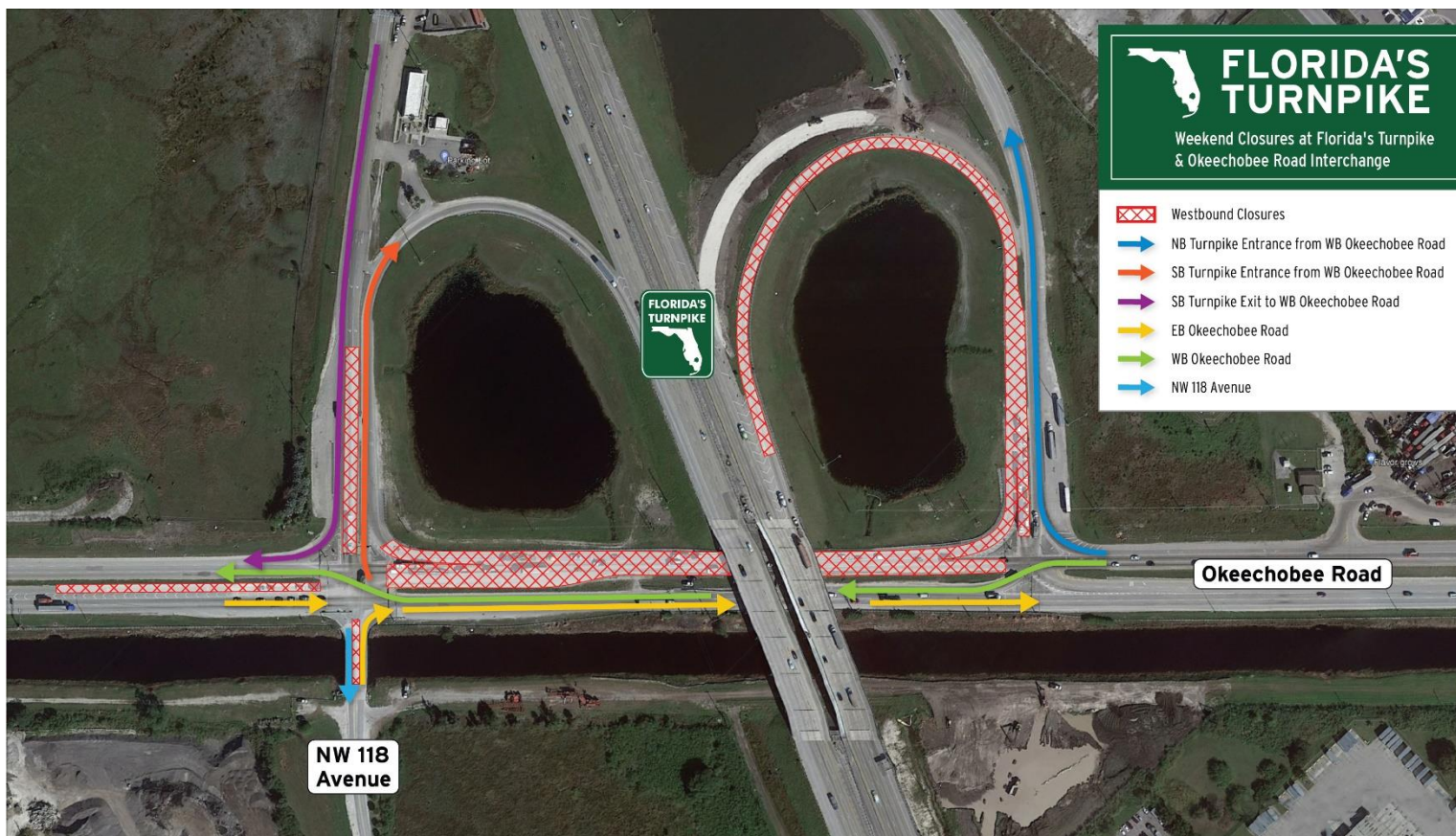
## Construction Alert

### Weekend Traffic Shift and Full Closures at Florida's Turnpike and Okeechobee Road Interchange in Miami-Dade County

Motorists are also encouraged to seek an alternate route and visit [fl511.com](http://fl511.com) before traveling for real-time traffic information, or follow [@FloridaTurnpike](https://twitter.com/FloridaTurnpike) on Twitter.

This work is part of the widening project along Florida's Turnpike/SR 821 from Flagler Station Boulevard/NW 106 Street to Interstate 75. Please note, this schedule may change due to inclement weather or unforeseen circumstances.

### WORK ZONE MAP



[FloridasTurnpike.com](http://FloridasTurnpike.com)