

**Table 3.1 - Turnpike Service Area County Population
1980-2022**

County	Turnpike Interchanges and Facilities	Population (000)							Average Annual Growth ('80-'22)
		1980	1990	2000	2010	2020	2021	2022	
Miami-Dade	Turnpike Mainline - SR 821 (0 through 35), 0X, 2X	1,626	1,937	2,253	2,496	2,702	2,732	2,758	1.3%
Broward	Turnpike Mainline - SR 821 (39, 43, 47), 49, 53, 54, 58, 62, 66, 67, 69, 71, Sawgrass Expressway	1,018	1,255	1,623	1,748	1,944	1,955	1,969	1.6
Palm Beach	75, 81, 86, 93, 97, 99, 107, 109, 116	577	864	1,131	1,320	1,492	1,502	1,518	2.4
Martin	133	64	101	127	146	158	159	162	2.2
St. Lucie	138, 142, 152	87	150	193	278	329	340	351	3.4
Osceola	193, 240, 242, 244, 249, SCE, Western Beltway, Part C	49	108	172	269	389	406	425	5.3
Orange	251, 254, 259, 265, 267, 272, Beachline West/East, SCE, Western Beltway, Part C	471	677	896	1,146	1,430	1,458	1,481	2.8
Lake	278, 285, 289, 296	105	152	211	297	384	400	404	3.3
Sumter	304, 309	24	32	53	93	130	135	141	4.3
Seminole	Seminole Expressway	180	288	365	423	471	478	484	2.4
Polk	Polk Parkway	322	405	484	602	725	748	770	2.1
Hillsborough	Veterans Expressway, Suncoast Parkway, I-4 Connector	647	834	999	1,229	1,460	1,490	1,521	2.1
Pasco	Suncoast Parkway	194	281	345	465	562	576	593	2.7
Hernando	Suncoast Parkway	45	101	131	173	195	197	199	3.7
Citrus	Suncoast Parkway	55	94	118	141	154	156	158	2.6
Okeechobee	Turnpike Mainline - SR 91 (MP 88 - MP 236)	20	30	36	40	40	39	39	1.6
Indian River	Turnpike Mainline - SR 91 (MP 88 - MP 236)	60	90	113	138	160	162	166	2.5
Brevard	Beachline East	273	399	476	543	607	617	628	2.0
Clay	First Coast Expressway	67	106	141	191	218	221	226	3.0
Duval	First Coast Expressway	571	673	779	866	996	1,017	1,034	1.4
Turnpike Service Area (20 Counties)		6,455	8,577	10,646	12,604	14,546	14,788	15,025	2.0
Total State (67 Counties)		9,747	12,938	15,982	18,801	21,538	21,899	22,276	2.0
Percent (20 of 67 Counties)		66.2%	66.3%	66.6%	67.0%	67.5%	67.5%	67.4%	

Source: U.S. Bureau of the Census and University of Florida, Bureau of Economic and Business Research.

**Table 3.2 - State and County Population
1990-2035 Forecast**

Year	Turnpike Service Area (20 Counties)		Total State (67 Counties)		Percent (20 of 67 Counties)
	Population (000)	Average Annual Growth*	Population (000)	Average Annual Growth*	
1990 Census	8,577	—	12,938	—	66.3%
2000 Census	10,646	2.2%	15,982	2.1%	66.6
2010 Census	12,604	2.0	18,801	1.9	67.0
2020 Census	14,546	1.8	21,538	1.7	67.5
2025 Forecast	15,668	1.7	23,219	1.7	67.5
2030 Forecast	16,607	1.7	24,589	1.6	67.5
2035 Forecast	17,350	1.6	25,676	1.5	67.6

Source: U.S. Bureau of the Census and University of Florida, Bureau of Economic and Business Research.

Forecast: BEBR Bulletin 195, April 2023.

* Growth is compounded annually based on the 1990 Census data.

The average annual growth in Turnpike Service Area counties has exceeded the overall state average growth in the last four censuses. This higher growth rate is forecasted to continue through 2035.

Table 3.3 - Comparison of Growth Indices

Index	Number (000)							Average Annual Growth (1980-2022)
	1980	1990	2000	2010	2020	2021	2022	
State Population	9,747	12,938	15,982	18,801	21,538	21,899	22,276	2.0%
Fuel Consumption (Highway Use)	5,246,579	7,031,708	8,906,286	9,611,976	10,255,101	11,097,391	11,446,162	1.9
Employment	4,026	6,061	7,569	8,141	9,328	9,835	10,447	2.3
Number of Tourists	20,046	40,970	72,800	82,300	79,338	122,023	137,401	4.7
Turnpike Traffic (Transactions)	55,463	121,378	379,132	639,426	860,569	861,062	1,138,036	7.5

Source: U.S. Bureau of the Census and University of Florida, Bureau of Economic and Business Research, Florida Commission on Tourism, Visit Florida, Florida Department of Transportation and Florida Research and Economic Database.

This table displays a comparison of four major indices with the growth in Turnpike traffic for the historical 1980-2022 period. Turnpike traffic has been increasing at a rate exceeding the other indices.

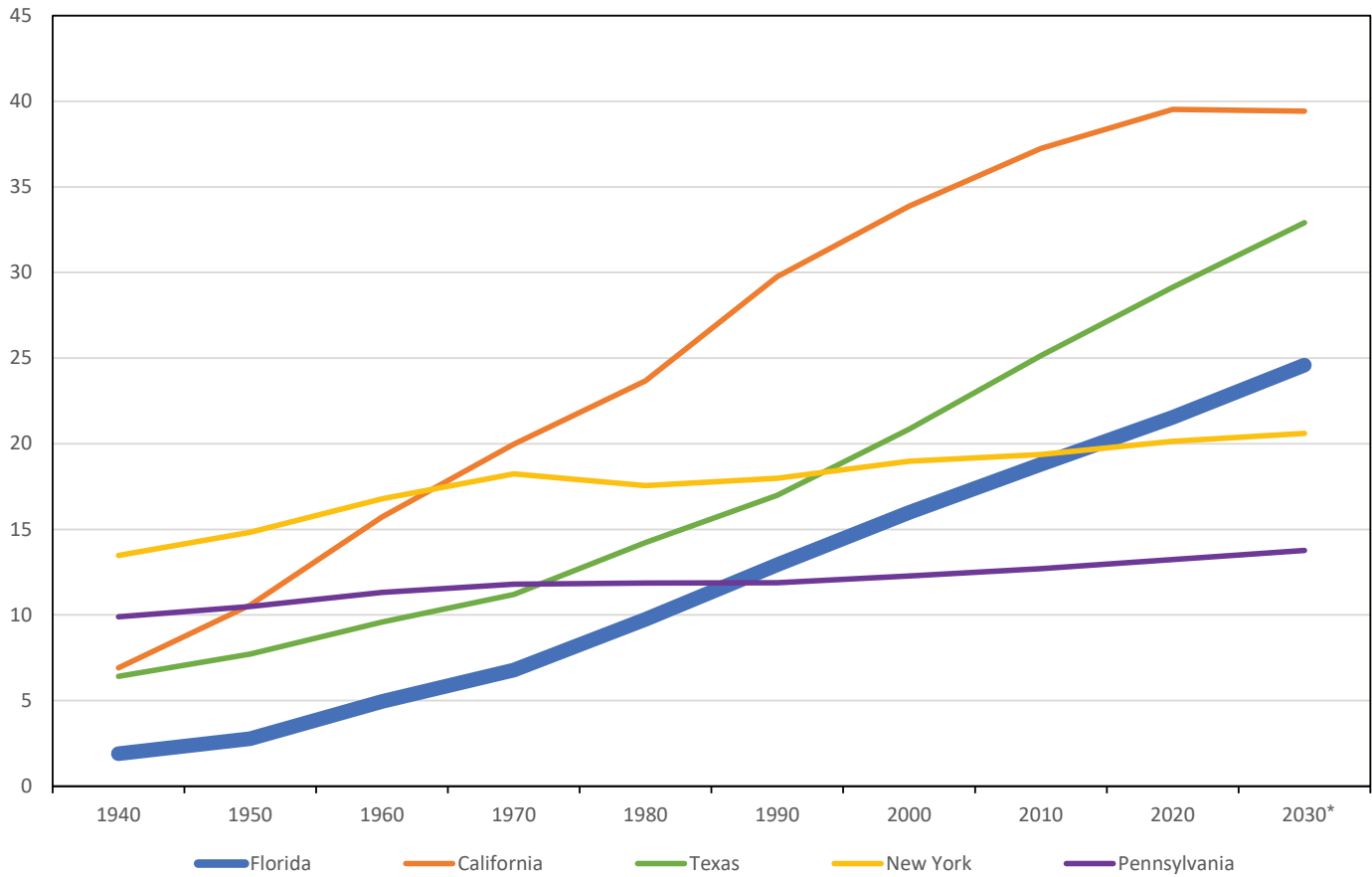
Table 3.4 - Comparison of Housing Units, Households, and Home Ownership Rate Among the Five Most Populous States

	Total Housing Units (Millions)	Total Housing Households (Millions)	Home Ownership Rate* (Percent)
California	14.3	13.2	55.5%
Texas	11.4	10.2	62.4
Florida	9.8	8.2	66.5
New York	8.4	7.5	54.4
Pennsylvania	5.7	5.1	69.2

* Reflects percent of occupied housing units that are owner-occupied.
 Source: U.S. Census Bureau, American Community Survey 2021

As a result of the population growth, the number of households in Florida increased from about 7.0 million in 2010 to 8.2 million in 2021. Among the most populous states, Florida ranks near the top with respect to home ownership rates, and third in the number of housing units and the number of households.

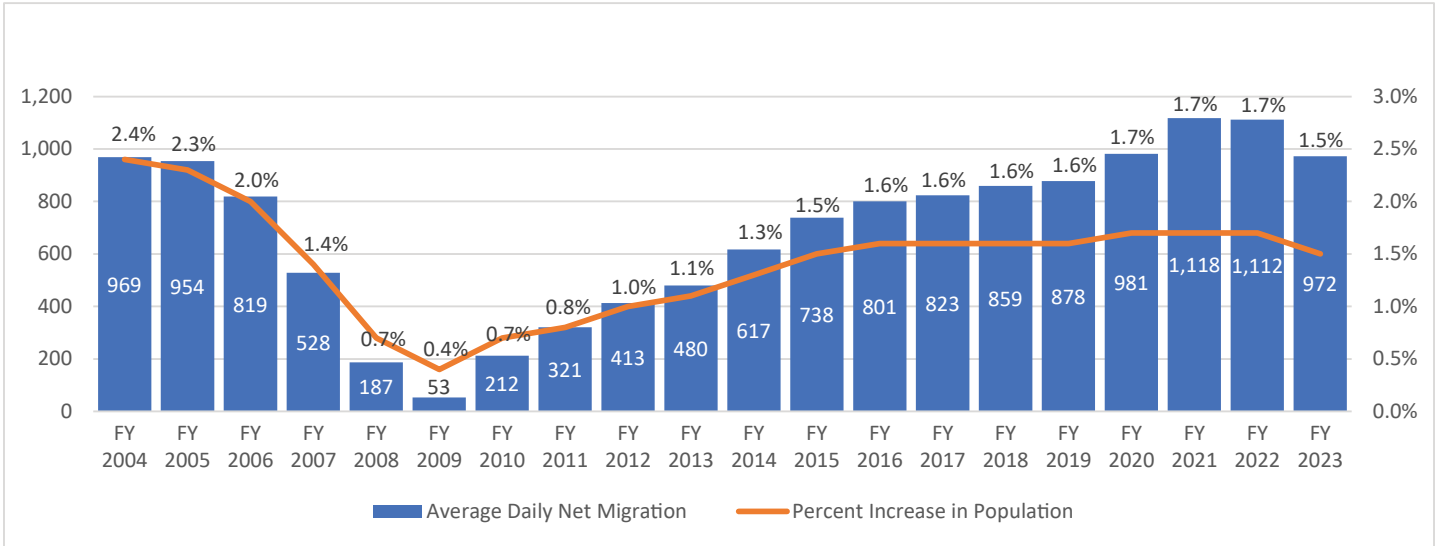
**Graph 3.1 - Comparative Population Growth in Five Most Populous States
(In Millions)**



Source: U.S. Bureau of the Census and University of Florida, Bureau of Economic and Business Research and individual state websites.
 Florida Forecast: BEBR Bulletin 195, April 2023.
 *Estimate

Between 1940 and 1980, Florida was the fifth most populous state. The accelerated growth rate of the state between 1990 and 2020 has pushed Florida's population higher than both New York and Pennsylvania. In 2030, Florida is forecasted to continue to have the third highest population, behind California and Texas.

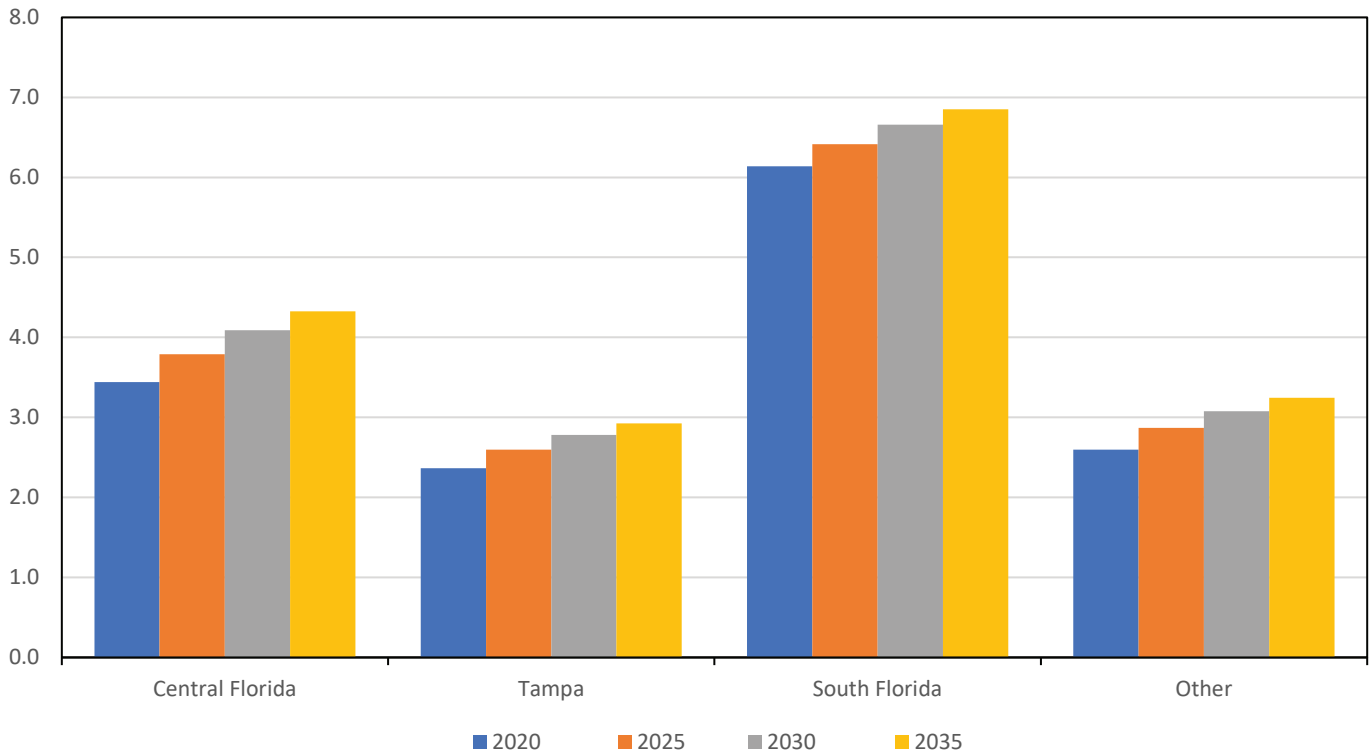
Graph 3.2 - Florida Population Trend



Source: Florida Demographic Estimating Conference July 11, 2023.

Florida's population is gradually increasing due in large part to a strengthening economy. As the graph shows, Florida's annual population growth reached 1.6 percent in FY 2016 and remained mostly at that level through FY 2022, albeit a significant decline from the levels seen prior to the Great Recession. Correspondingly, the average daily net migration (excluding deaths and births), which peaked at nearly a thousand residents in FY 2004, has gradually rebounded to similar levels in recent years, particularly in FY 2021 and FY 2022, which both exceeded 1,100 daily residents.

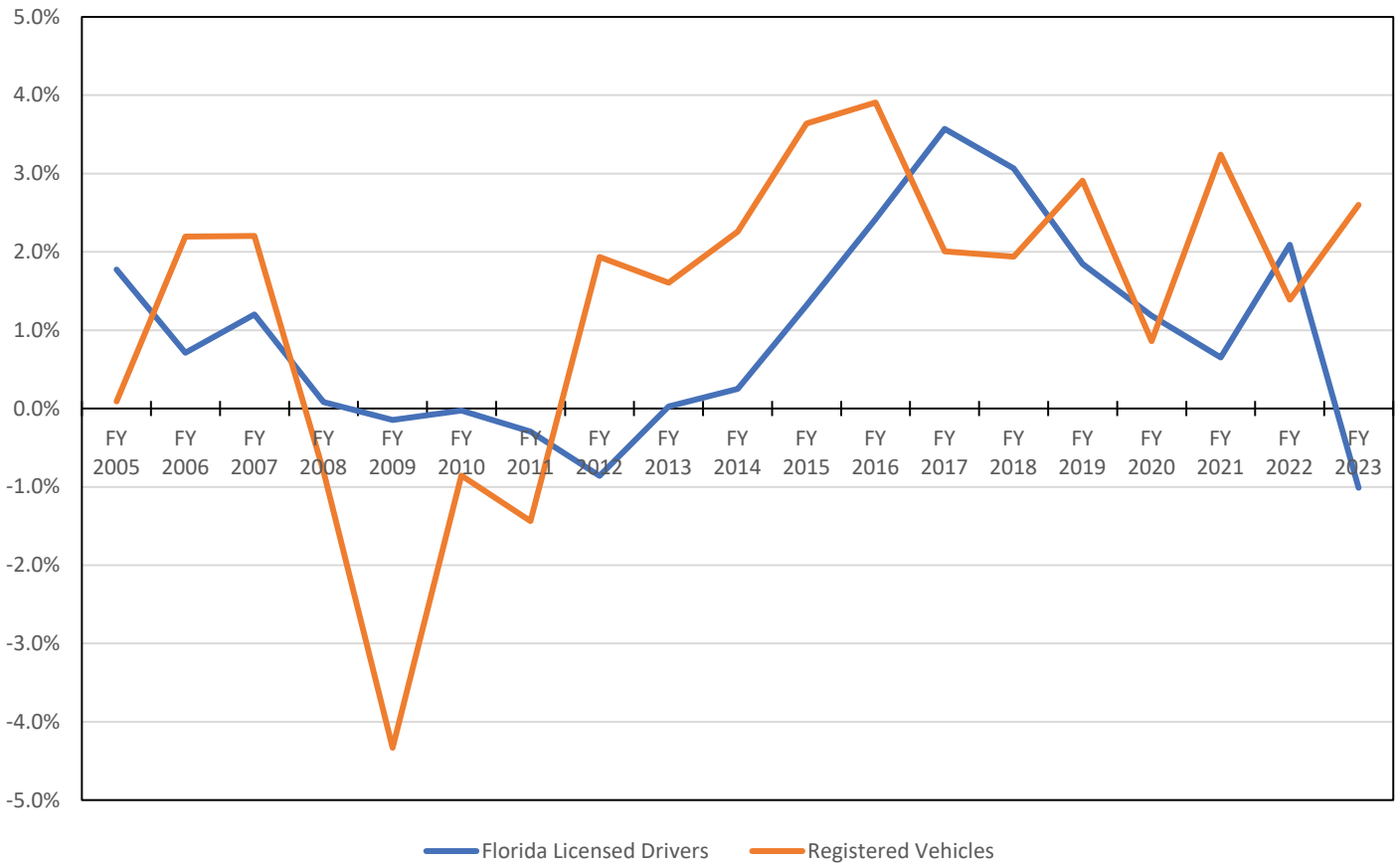
Graph 3.3 - Current and Future Population Estimates of Regions Served By Turnpike (In Millions)



Source: U.S. Bureau of Census and University of Florida, Bureau of Economic and Business Research (BEBR).
 Forecast: BEBR Bulletin 195, April 2023.

The state's population is expected to exceed 25 million in 2035. Furthermore, as the graph depicts, all the population centers that the Turnpike serves are expected to grow. Central and South Florida are expected to add the bulk of the increase with approximately 886 thousand and 713 thousand, respectively, by 2035, followed by the Other Region with 650 thousand.

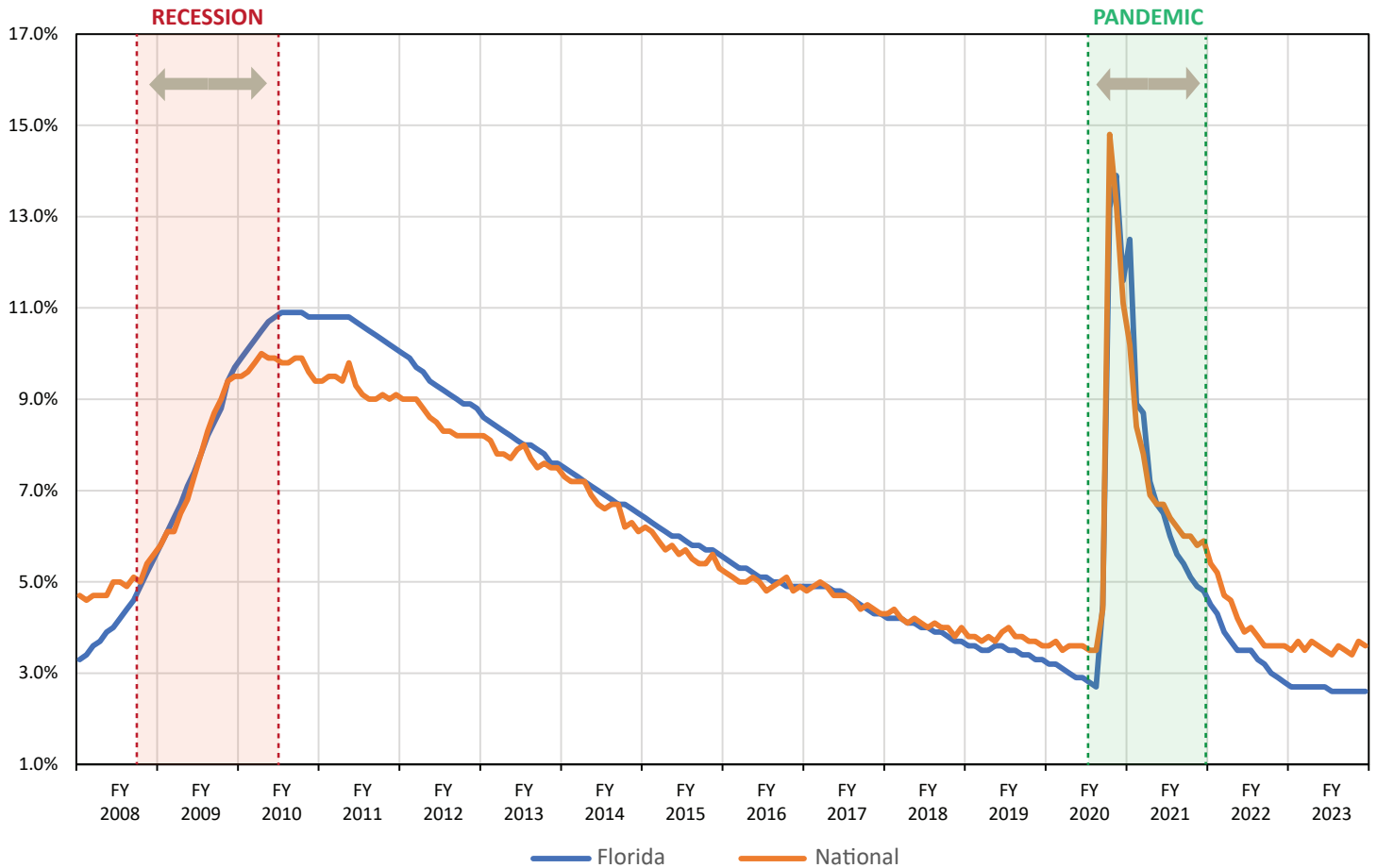
Graph 3.4 - Year-Over-Year Percent Change: Florida Licensed Drivers and Registered Vehicles



Source: Florida Department of Highway Safety and Motor Vehicles.

Historically, population growth has had a direct impact on the number of driver's licenses and vehicles registered in the state. After declines during the Great Recession due to a slow down in population, year-over-year growth rates of Florida licensed drivers increased through FY 2017. However, recent population growth has not necessarily correlated to the number of driver's licenses issued. With the exception of FY 2022, the percent growth of driver's licenses issued has decreased every year since FY 2017. Vehicle registration has remained relatively stable since FY 2012, ranging between one and four percent. During FY 2023, licensed drivers in Florida decreased by one percent, while registered vehicles increased by over two percent.

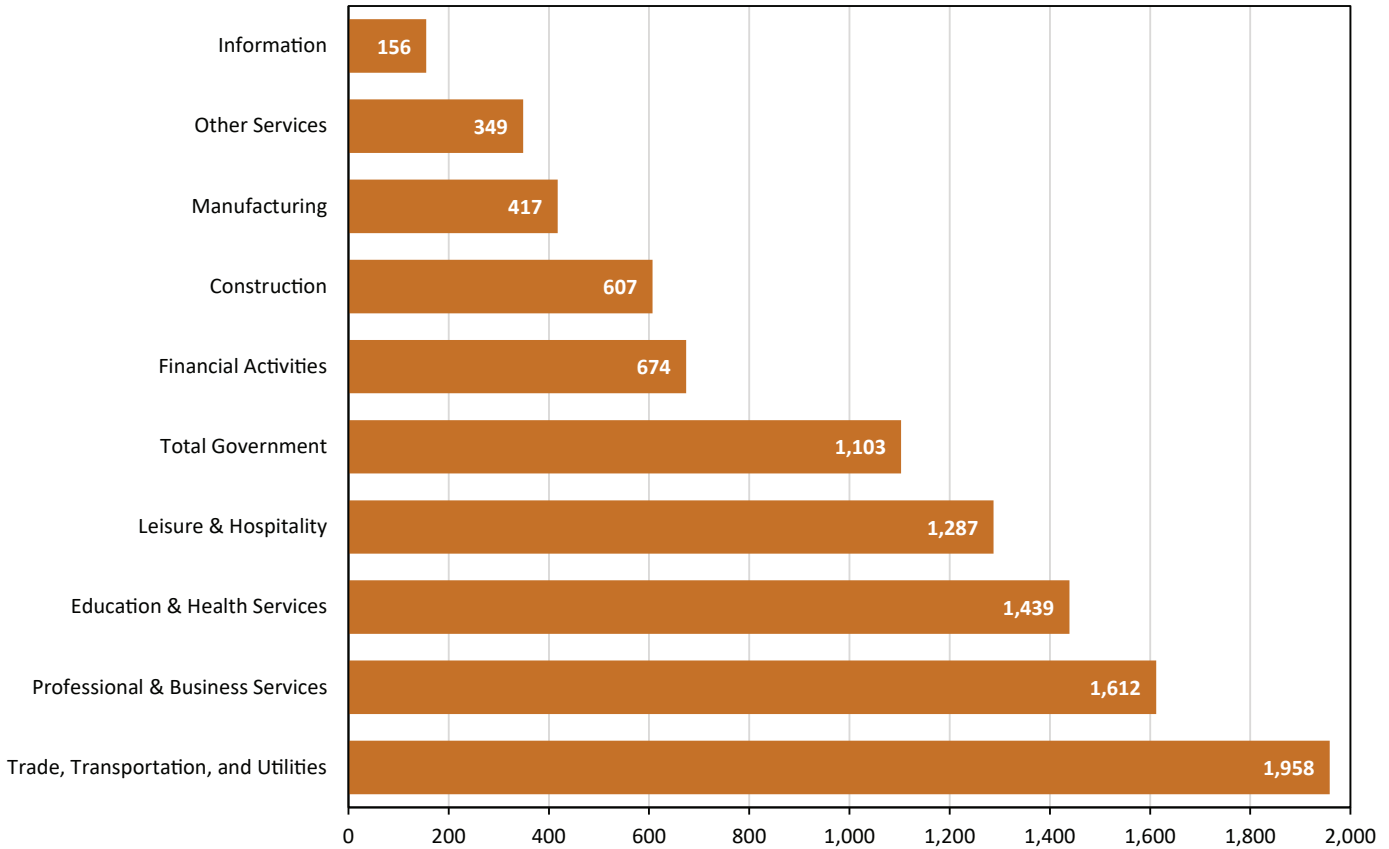
Graph 3.5 - Unemployment Rate



Source: U.S. Bureau of Labor Statistics.

This graph displays the change in the unemployment rate in Florida, along with the national rate since the beginning of FY 2008. After peaking at 10.9 percent in January 2010, Florida's unemployment rate gradually declined to 2.7% in February 2020, lower than the national average of 3.5 percent. Due to the national pandemic spanning 2020 to 2021, unemployment rose dramatically in Florida peaking at 13.9 percent in May 2020. However, Florida's unemployment continues to diminish with June 2023 unemployment at 2.6 percent compared to the national rate of 3.6 percent.

**Graph 3.6 - 2023 Non-Agricultural Employment in Florida
(In Thousands)**

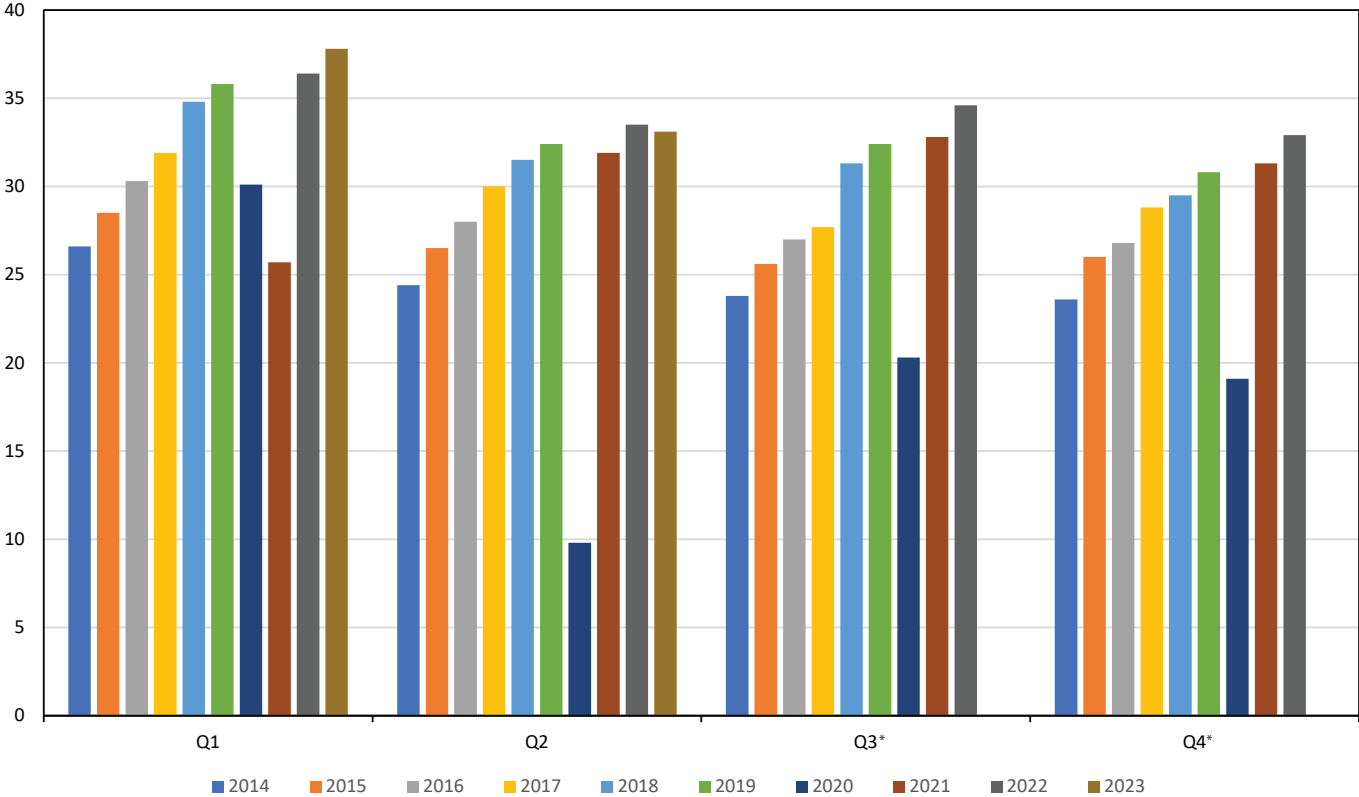


Source: Bureau of Labor Statistics

Florida has a diverse industry base, which to some extent, mitigates the impact from economic downturns in certain industry sectors. It has a vibrant leisure and hospitality industry, and professional and business services industry, complemented by international trade.

The graph above presents the Non-Agricultural Employment in the state by the North American Industry Classification System (NAICS). In FY 2023, the trade, transportation and utilities industries employed over 1.9 million of the workforce and 20 percent of the total employment; followed by professional and business services; education and health services; and leisure and hospitality. All sectors experienced year-over-year increases

**Graph 3.7 - Florida Tourists
(in Millions)**



* 2023 Q3 and Q4 data not yet available.

Source: visitflorida.org

Tourism is a vital component of Florida's economy. This graph shows the number of Florida visitors by quarter over the past ten calendar years. All quarters show an increasing trend except for 2020, reflecting the impact of the pandemic. Recovery started in the second quarter of 2021, and has continued to increase year-over-year through the first quarter of 2023.

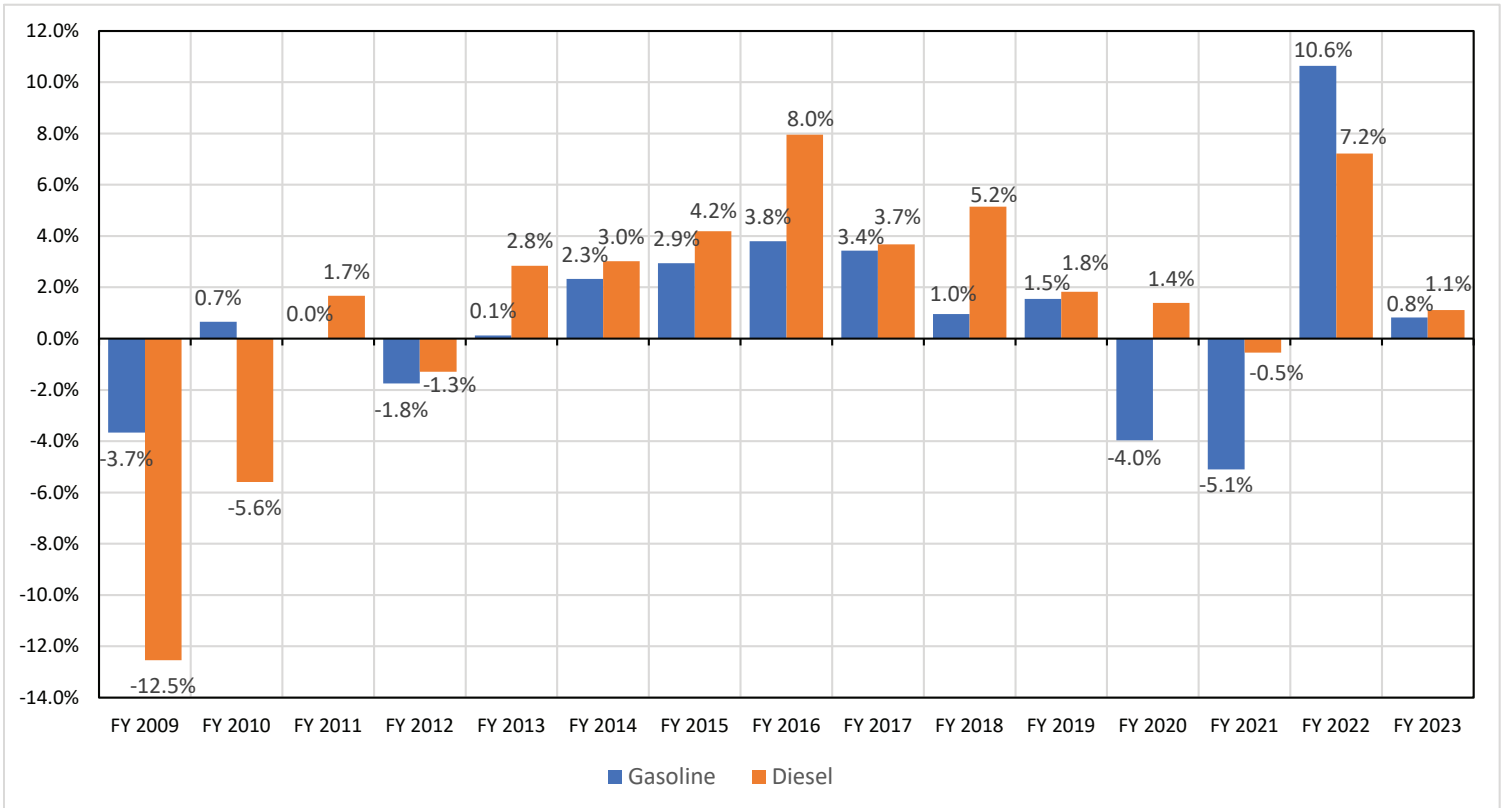
**Graph 3.8 - Florida Gasoline Prices
(Average of All Grades)**



Source: Energy Information Administration, U.S. Department of Energy.

This graph portrays the historical trend of gas prices in Florida (average of all grades) over the past ten years. Historically, prices per gallon fluctuated between \$2 and \$4. Gas prices grew consistently from 2021 to a peak of \$4.80 in June of FY 2022. During FY 2023, gas prices have declined, ranging from \$3.14 to \$4.34.

**Graph 3.9 - Year-Over-Year Percent Change:
Highway Fuel Consumption in Florida**



Source: Florida Department of Transportation.

The decline in fuel consumption, particularly diesel in FY 2009 and FY 2010 reflects the impact of the economic recession at that time. The consumption rate rebounded starting in FY 2013 and continued through FY2019. Recently, the increased deployment of more fuel-efficient vehicles has contributed to the diminished growth in the highway fuel consumption rate in the state. The decline in gasoline consumption in FY 2020 and FY 2021 is largely attributed to the decrease in travel resulting from the pandemic. The consumption rebound in FY 2022 reflects the increase in traffic following the State's recovery. The trends in FY 2023 reflect a modest growth rate over the high growth rates in previous year.

THIS PAGE INTENTIONALLY LEFT BLANK