



Sawgrass Expressway/SR 869 Widening Project from Atlantic Boulevard/SR 814 to Sample Road/SR 834

Project Description

Florida's Turnpike Enterprise is widening Sawgrass Expressway/State Road (SR) 869 from Atlantic Boulevard/SR 814 (Exit 8) to Sample Road/SR 834 (Exit 11) in Broward County.

Project benefits include:

- Improving mobility by adding four additional lanes from north of Atlantic Boulevard to north of Sample Road, for a total of five lanes in each direction
- Relieving congestion by adding one additional lane to the entrance ramps and adding two additional lanes to the exit ramps at Sample Road
- Increasing safety and traffic efficiency by converting the Sample Road interchange to a partial diverging diamond interchange, limiting the number of traffic signal phases and allowing drivers to make a left turn without crossing in front of oncoming traffic
- Improving roadside safety by installing new signage, pavement markings, signalization, lighting, and drainage

Construction and Traffic Impacts

Construction will take place during both daytime and nighttime hours. Nearby residents and businesses may experience periodic construction light, noise, vibration, and dust through the project's duration. Florida's Turnpike Enterprise takes steps to reduce construction impacts and efforts will be made to limit traffic and noise disruptions.

New lanes constructed as part of this project will open upon the completion of adjacent widening projects. Lane closures will generally take place during off-peak hours to minimize traffic congestion and delays for most drivers. Closures will be announced in advance in the South Florida and Treasure Coast Weekly Lane Closures and Work Zone Advisory.

Schedule and Funding

Construction Schedule

Work is anticipated to continue through summer 2028.

Cost and Funding

The project cost is approximately \$110 million.

Public Information

Brielle Gordon

Community Outreach Specialist
954-934-1279

– or –

1-800-749-PIKE

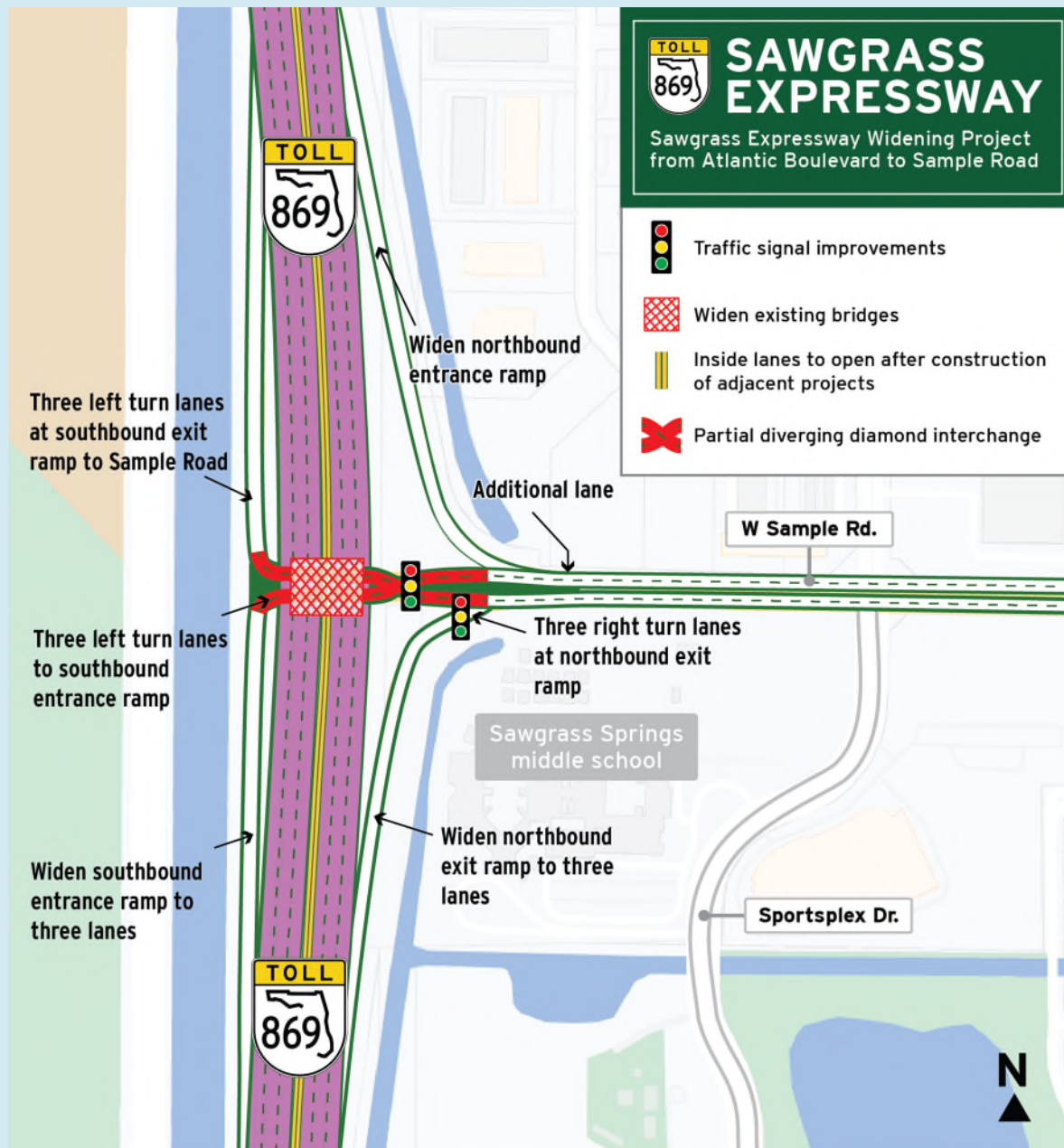
Brielle.Gordon@dot.state.fl.us

www.FloridasTurnpike.com

[X.com/FloridaTurnpike](https://www.X.com/FloridaTurnpike)



Florida's Turnpike Enterprise
PO Box 9828
Fort Lauderdale, FL 33310-9828



To receive construction updates via e-mail, please contact Brielle.Gordon@dot.state.fl.us.