



Construction Alert



Extended Closure of Okeechobee Road Tandem Truck Lot in Miami-Dade County

The Tandem Truck lots located on the northbound Florida's Turnpike/State Road (SR) 821 entrance ramp from Okeechobee Road/US 27 and the southbound Florida's Turnpike exit ramp to Okeechobee Road/US 27 (Exit 35) will remain closed for the reconstruction of the interchange. Both tandem lots will reopen in mid-2026.

Construction will take place during both daytime and nighttime hours. Work in this area includes drainage improvements, reconstruction of the northbound Florida's Turnpike entrance ramp from Okeechobee Road, reconstruction of Okeechobee Road with concrete pavement and signal modifications.

As an alternate, tandem operators should use the tandem lot located on Commercial Boulevard/SR 870 off Sawgrass Expressway/SR 869.

This work is part of the widening of Florida's Turnpike from NW 106 Street to Interstate 75 and includes widening Okeechobee Road from just west of the Turnpike to just east of NW 107 Avenue. Please note that this schedule may change due to inclement weather or unforeseen conditions.

To receive a copy of the weekly traffic advisory or periodic project updates, please reach out to Community Outreach Specialist Hector Reyes at (954) 934-1251 or Hector.Reyes@dot.state.fl.us. For tandem questions, please contact Andrea Bellamy at (954) 934-1243 or Andrea.Bellamy@dot.state.fl.us.

Public Information

Hector Reyes

Community Outreach Specialist

954-934-1251 – or – 1-800-749-PIKE

Hector.Reyes@dot.state.fl.us

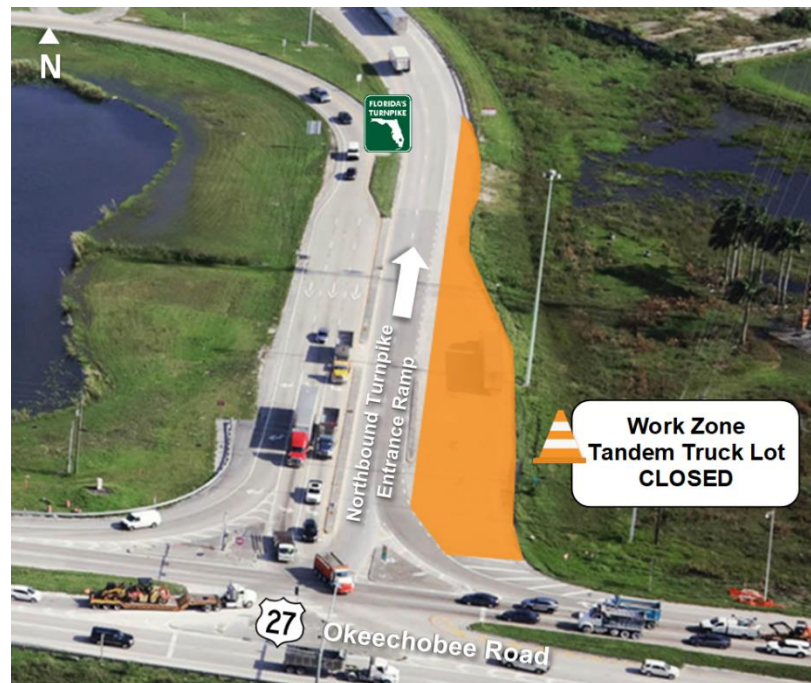
www.FloridasTurnpike.com • [X.com/FloridaTurnpike](https://www.x.com/FloridaTurnpike)



Construction Alert

**Extended Closure of Okeechobee Road Tandem Truck Lots
in Miami-Dade County**

WORK ZONE MAP



FloridasTurnpike.com