



Aesthetic Guidelines

Florida's Turnpike Enterprise

January 2026 Edition





CONTENT

Mission Statement	4
Interchanges	5
• Bridges	6
- Coatings and Textures	
- Embankments	
- Branding Elements	
- Column Ornamentation	
- LED Lighting	
• Fencing	11
- Chain Link Vertical Fencing	
- Chain Link Curve Top Fencing	
- Chain Link Right of Way Fencing	
- Welded Wire Vertical Fencing	
- Welded Wire Curve Fencing	
• Walls	16
- Retaining Walls	
- Noise/Visual Barrier Walls	
- Barrier Mounted Sound Walls	
• Toll Gantry	23
• Posts and Poles	24
- Lighting	
- ITS Equipment	
- Signs	
• Landscape	27
• Hardscape	28
- Gateway Signs	
- Natural Stone Features	
- Decorative Retaining Walls	
• Fountains	32



Urban Mainline	33
• Bridges	34
- Coating and Textures	
• Fencing	36
- Chain Link Right of Way Fencing	
- Welded Wire Curve Pedestrian Bridge Fencing	
• Walls	38
- Noise/Visual Barrier Walls	
- Barrier Mounted Sound Walls	
• Posts and Poles	40
• Landscape	41
Rural Mainline	42
• Bridges	43
- Coating and Textures	
• Fencing	44
- Type A Fencing	
- Type B Fencing	
• Posts and Poles	46
• Landscape	47
Service Plazas	48
• Landscape	49
- Specialty Lighting	
• Hardscape	51
- Monument Signs	
- Decorative Retaining Walls	
• Fountains	53
• Posts and Poles	54
- Signs	
• Pedestrian Facilities	56
- Walking Path + Seating Area	
- Dog Facility Fencing	



2026

Turnpike Mission

Statement

To help meet the State's growing transportation needs, ensuring value to customers, protecting investors, and managing the Florida's Turnpike Enterprise (FTE) in a business like manner.

Vision

Statement

FTE Aesthetic Guidelines focus on transportation development that achieves both functional and visually appealing facilities.

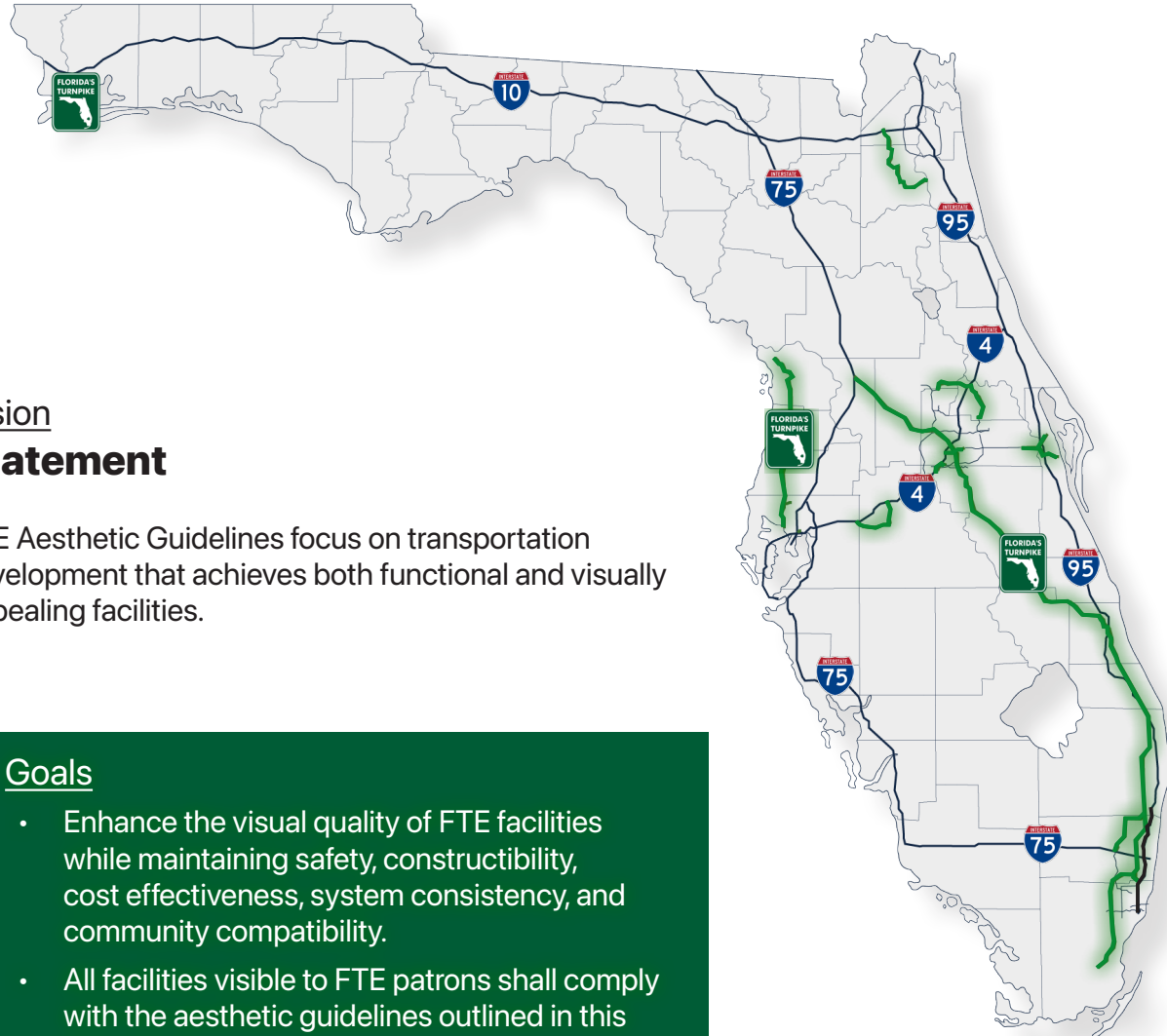
Goals

- Enhance the visual quality of FTE facilities while maintaining safety, constructibility, cost effectiveness, system consistency, and community compatibility.
- All facilities visible to FTE patrons shall comply with the aesthetic guidelines outlined in this document.
- Any exceptions shall be governed by agreements between FTE and local agencies.

Innovation

Statement

FTE embraces innovation through the use of advanced materials, technologies, and collaborative design processes. FTE continuously refines its aesthetic approach to adapt to evolving community needs, construction practices, environmental priorities and forward-thinking infrastructure solutions.





2026

Interchanges

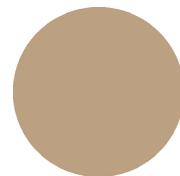
SR 91 and SR 429 Interchange



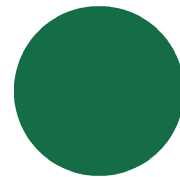
Coatings and Textures

All interchange bridges and miscellaneous structures shall be coated to ensure a consistent and well maintained appearance throughout the FTE.

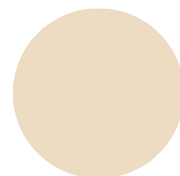
- Concrete barriers, copings and slab overhangs shall be coated in Sandalwood color with a smooth finish.
- The face and bottom sections of the exterior beams shall be coated in Turnpike Green color.
- Mechanically Stabilized Earth (MSE) Panels shall be coated in Light Tan color with a smooth finish.
- Bridge piers may vary in design but shall maintain aesthetic consistency with the bridge structure and MSE panels. Sandalwood color shall be used for caps, and Light Tan for columns, both with a smooth finish. These colors may alternate to provide visual variety.
- Guardrail to be uncoated standard galvanized finish per Standard Plans.



Sandalwood
FS33446



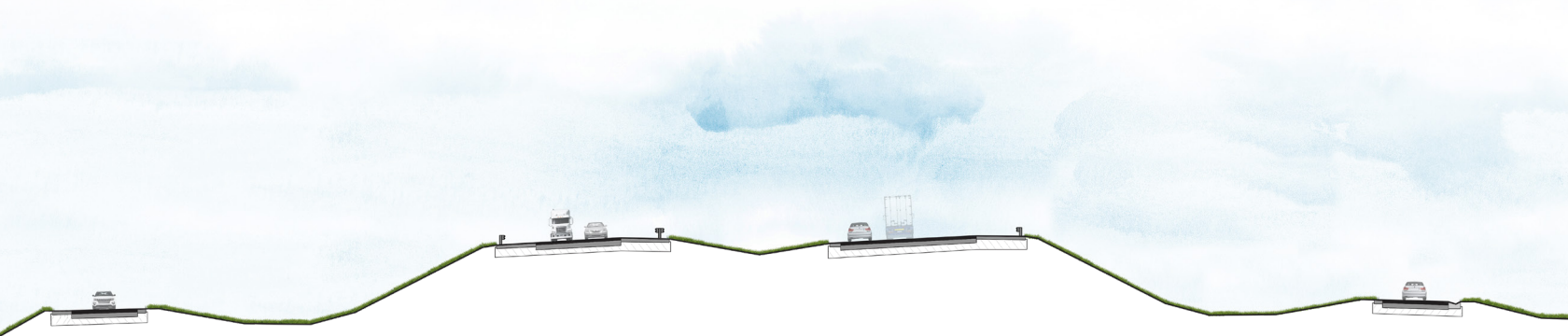
Turnpike Green
FS34090



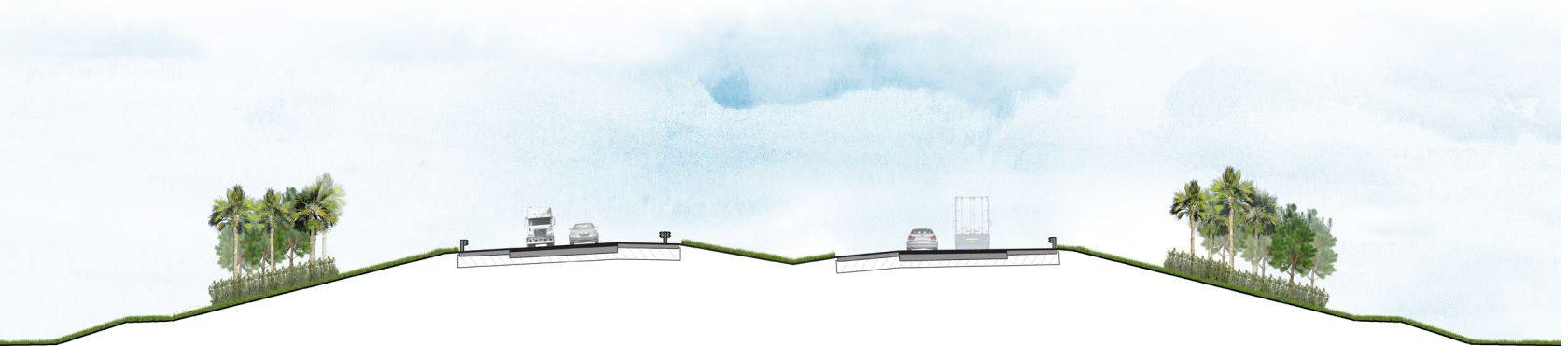
Light Tan
FS23717



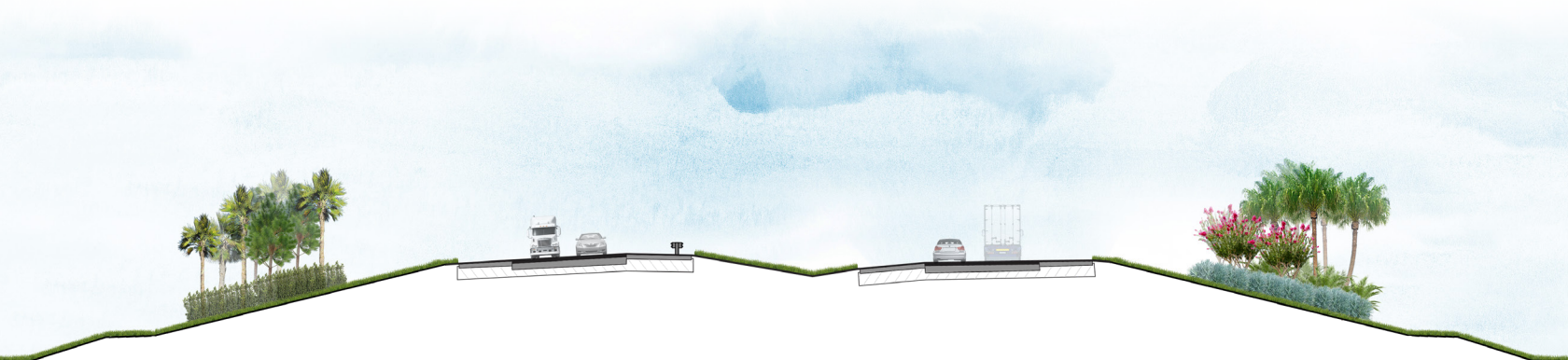
Embankments



1:2 Embankments with 1:2 slopes shall be planted with material that requires low or no maintenance. Planting selection shall be determined by region and requires approval from FTE Management.



1:3 Embankments with 1:3 slopes are acceptable for landscape aesthetics. Landscape installations on 1:3 slopes may be susceptible to slope erosion and slope failure.



1:4 Embankments with 1:4 slopes, or less, are best for landscape aesthetics.



2026



Branding Elements

These aesthetic features are illuminated with integrated LED lights that highlight the FTE logo and the column ornamentation, enhancing visibility and creating a distinctive aesthetic.

These features are ideally designed and constructed during initial bridge construction.

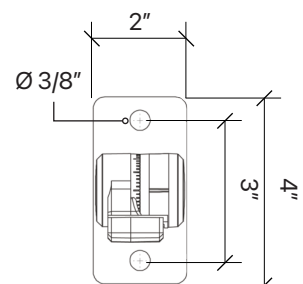
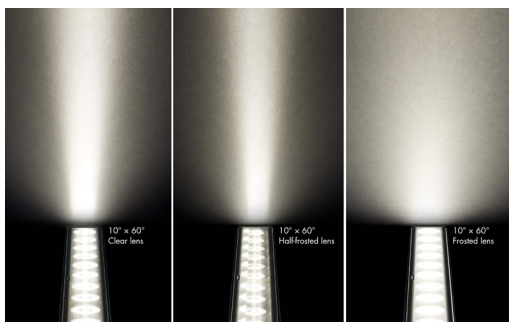
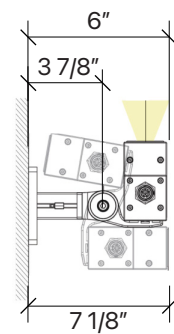
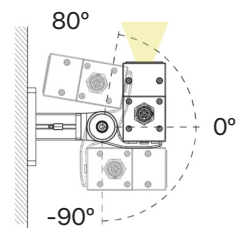
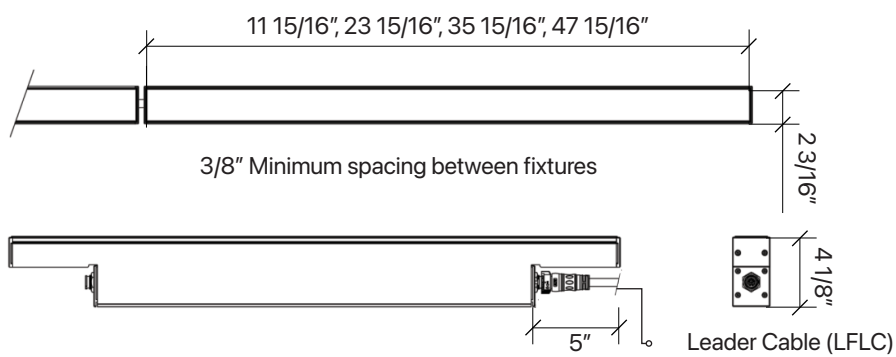
Architectural elevation drawing of a wall section. The wall features a sign that reads "FLORIDA'S TURNPIKE" with a map of Florida. Dimensions are indicated on the left and bottom. The sign is 5' wide and 6' high. The wall section is 10' wide at the top. The total height of the wall section is 12'-6". The wall is composed of a brick pattern. The bottom of the wall is labeled "ELEVATION".



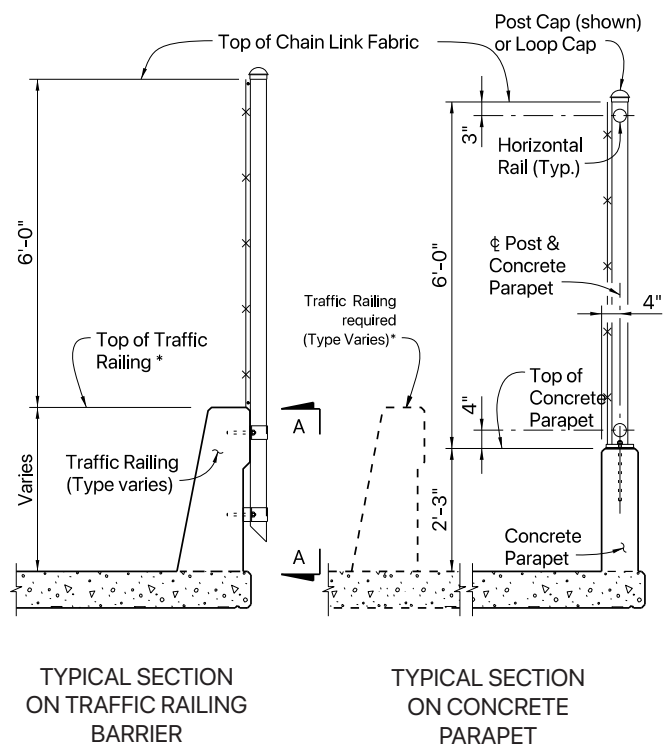
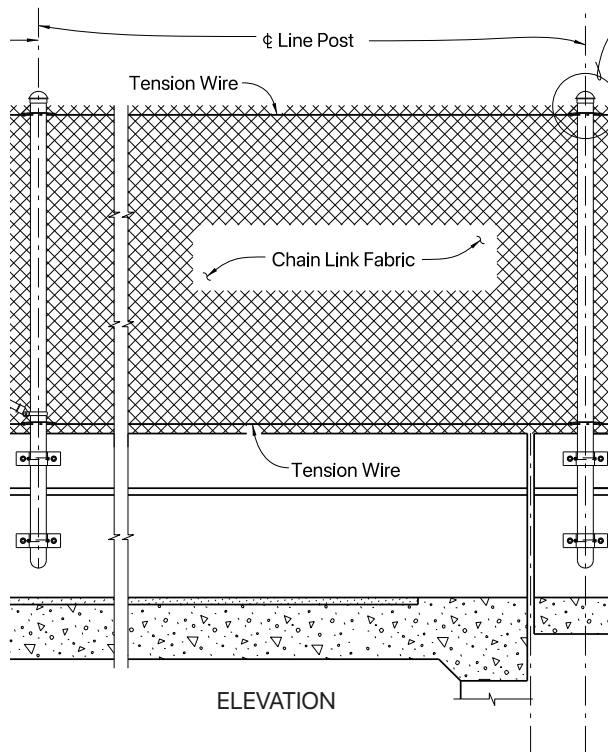


2026

LED Lighting

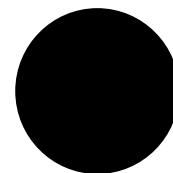


All fencing components within the limits of the interchange shall be black coated. Fence material on bridges will consist of chain link or welded wire.

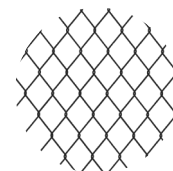


Chain Link Vertical Fencing

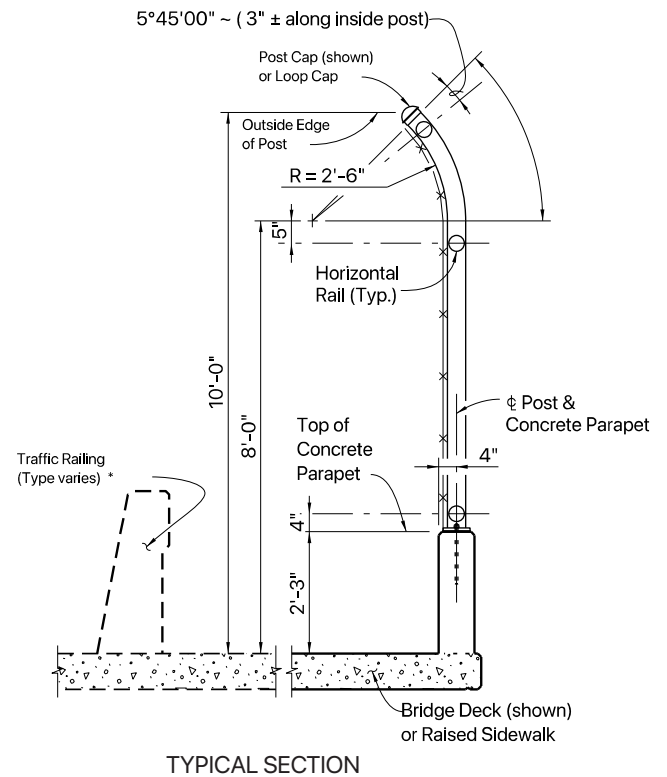
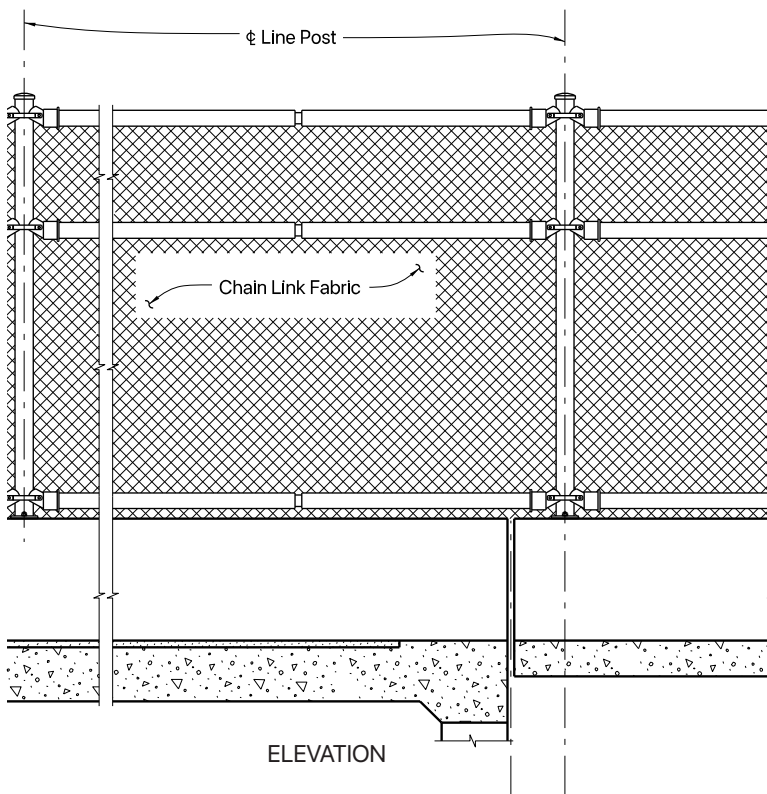
The limits of fencing extend from the beginning of the approach slab at the start of the bridge to the end of the approach slab at the end of the bridge. (Standard Plan 550-010).



Black
FS17038

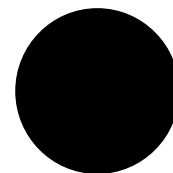


Detail:
Coated chain link
fence fabric

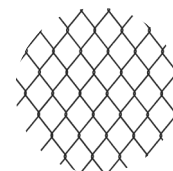


Chain Link Curve Top Fencing

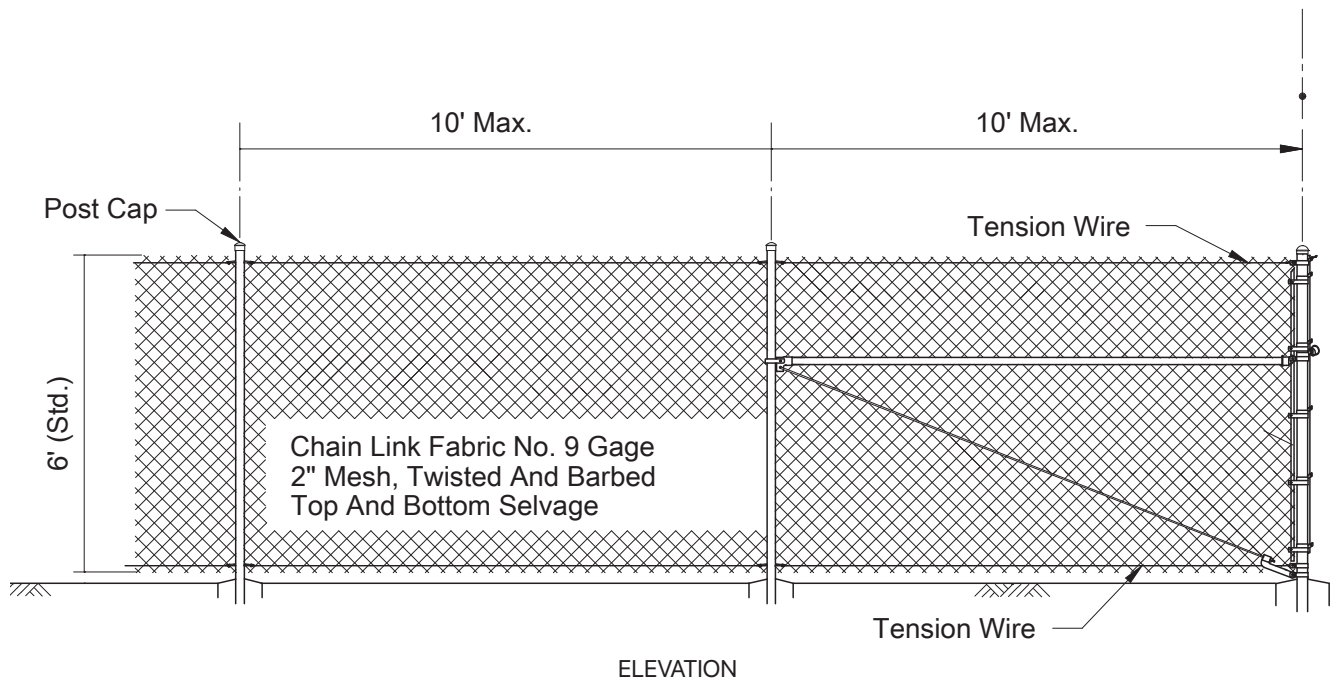
The limits of fencing extend from the beginning of the approach slab at the start of the bridge to the end of the approach slab at the end of the bridge. (Standard Plan 550-011).



Black
FS17038

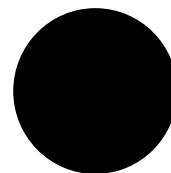


Detail:
Coated chain link
fence fabric

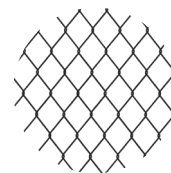


Chain Link Right of Way Fencing

All right of way fence shall be a black coated chain link fence.
(Type B, Standard Plan 550-002).



Black
FS17038

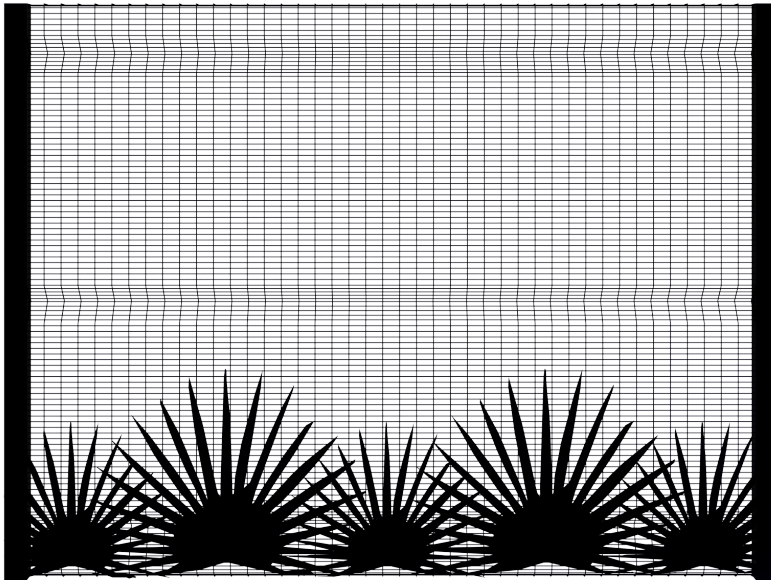


Detail:
Coated chain link
fence fabric



2026

Example of custom graphic that can be incorporated into the fence panels.



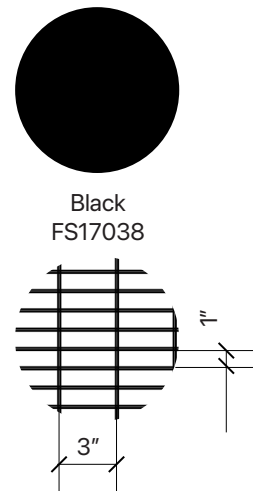
ELEVATION



PERSPECTIVE

Welded Wire Vertical Fencing

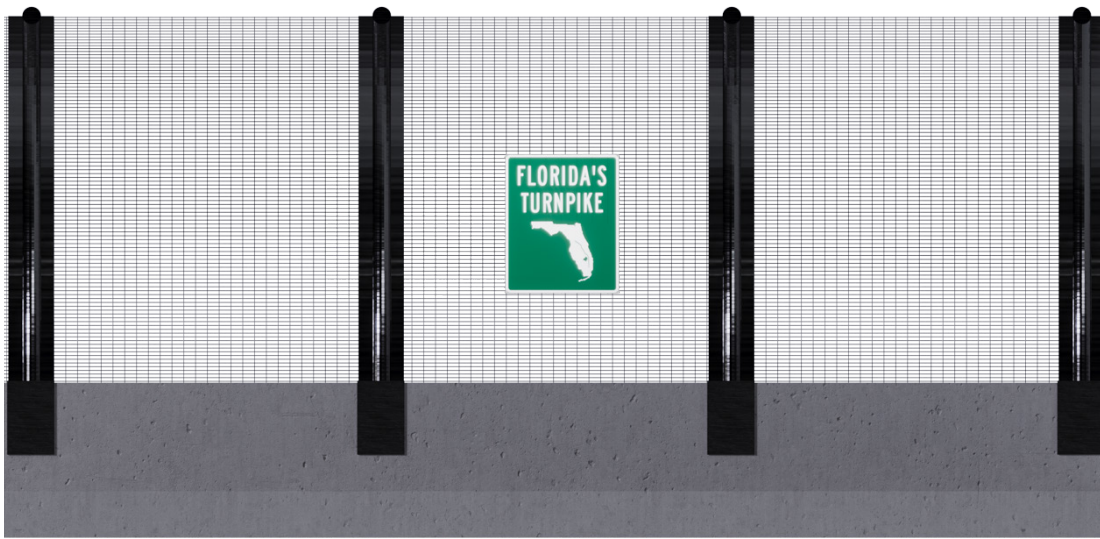
The limits of fencing extend from the beginning of the approach slab at the start of the bridge to the end of the approach slab at the end of the bridge. There is no Standard Plan for this fence type, a Technical Special Provision (TSP) will be required.



Detail:
Coated welded wire
fence fabric



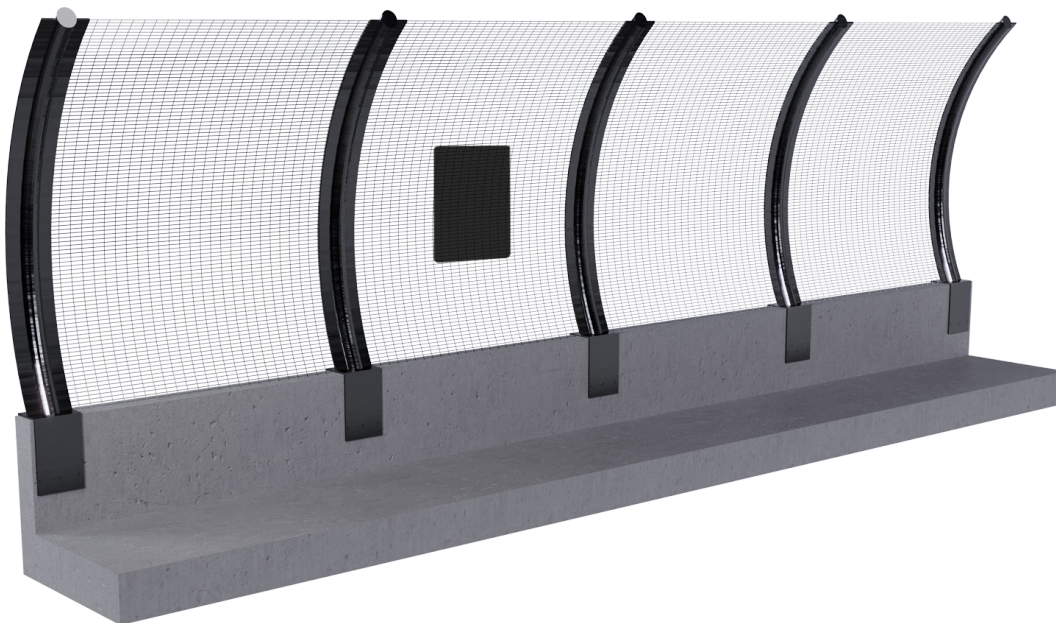
2026



ELEVATION

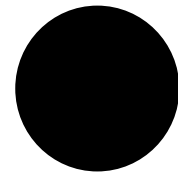


SECTION

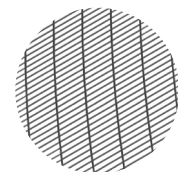


Welded Wire Curve Fencing

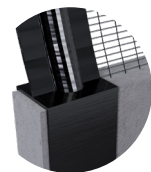
The limits of fencing extend from the beginning of the approach slab at the start of the bridge to the end of the approach slab at the end of the bridge. There is no Standard Plan for this fence type, a TSP will be required.



Black
FS17038



Detail:
Coated welded wire
fence fabric



Post Connection



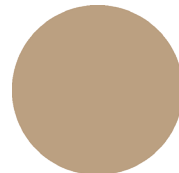
Retaining Walls

Cantilever retaining walls can serve as an aesthetic tool used to avoid steep slope conditions and provide landscape aesthetic opportunities. These retaining walls elevate the landscape area making it more appealing to travelers on the mainline.

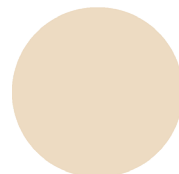
MSE retaining wall and tie backs may not be ideal for retaining wall systems that have smaller landscape opportunity areas.

The coating and texture of the retaining wall shall match bridge aesthetic features.

- Standard coating color: Sandalwood for trim and Light Tan for wall panels with a smooth finish.
- Random rib texture for retaining wall face or square pattern shall match MSE wall panel design.



Sandalwood
FS33446



Light Tan
FS23717



2026

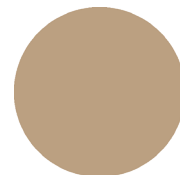


Noise/Visual Barrier Walls

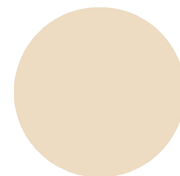
Noise/visual barrier walls have architectural columns that match the wall height and includes a major and minor columns. Major columns are larger architectural columns and would occur at the beginning/end of the wall and every 22 panels. Panel themes will include continuous saw palmetto graphics on all bottom panels. Major columns will be branded with FTE logo.

This nature theme reflects Florida's native plant material species.

- The major columns shall be coated in Sandalwood color, while the FTE logo shall be coated in Light Tan color for contrast.
- Minor columns shall be coated in Light Tan color.
- All panels will have a base coating with Light Tan color and panel graphics shall be coated in Sandalwood color.
- Back of all wall panels and columns shall be coated Light Tan color with a smooth finish.

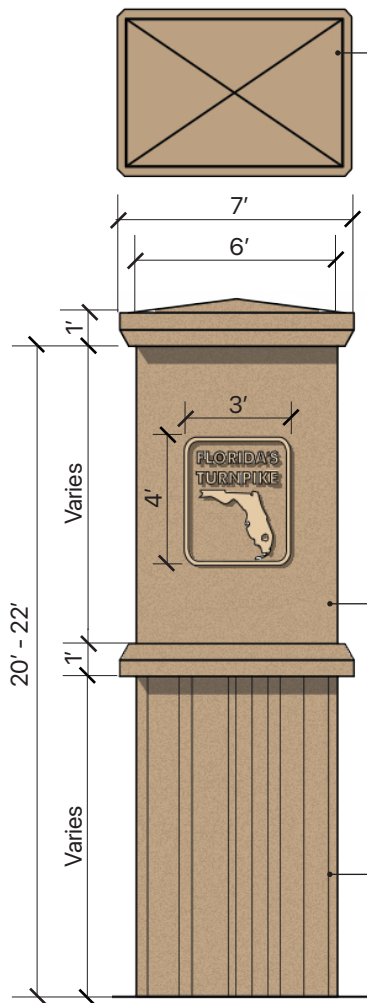


Sandalwood
FS33446

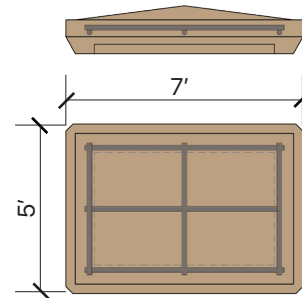


Light Tan
FS23717

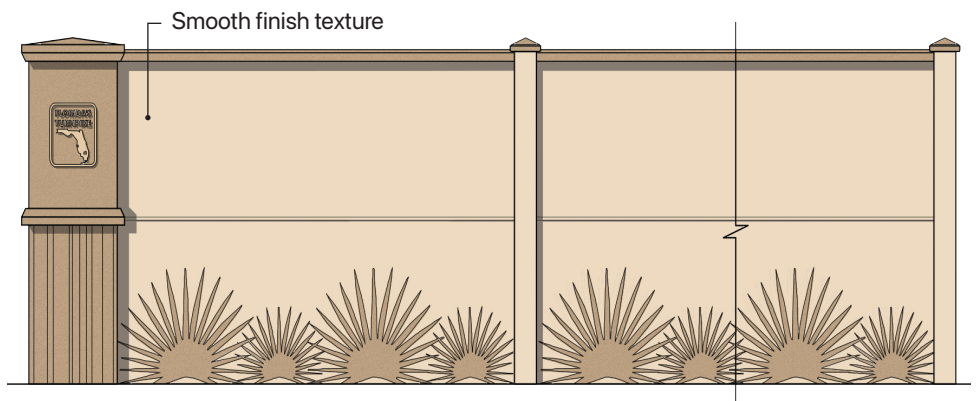
Major Architectural Columns



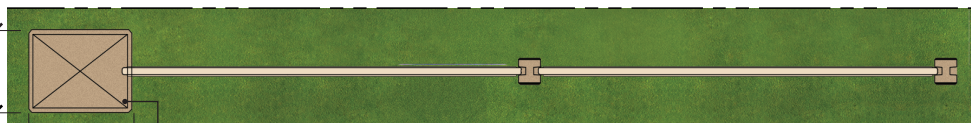
MAJOR ARCHITECTURE COLUMN



MAJOR COLUMN CAP



LARW



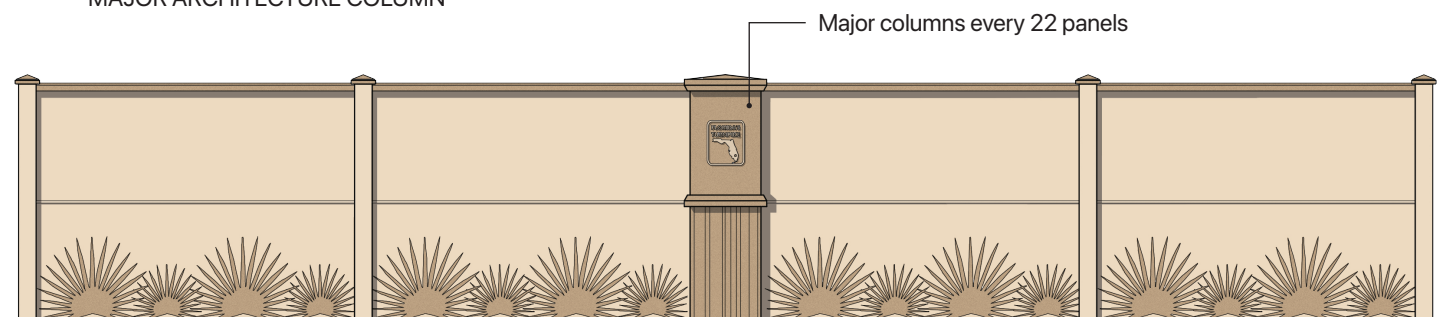
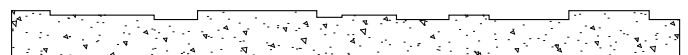
END ARCHITECTURE COLUMN

Architectural columns are located at the beginning and end of the wall.

Smooth finish texture

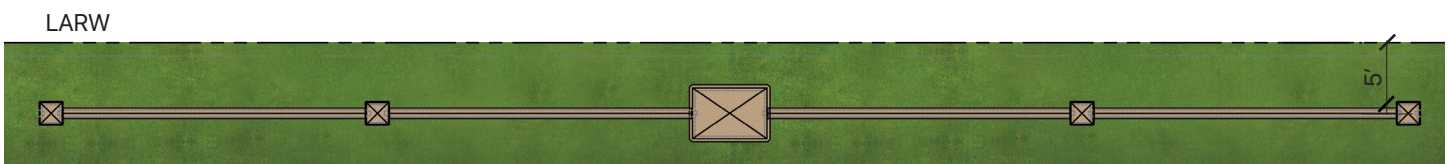
SAMPLE RANDOM RIB TEXTURE

Nominal Relief: 1/2" to 1"
Rib Width: 4" to 12"



Major columns every 22 panels

FRONT VIEW

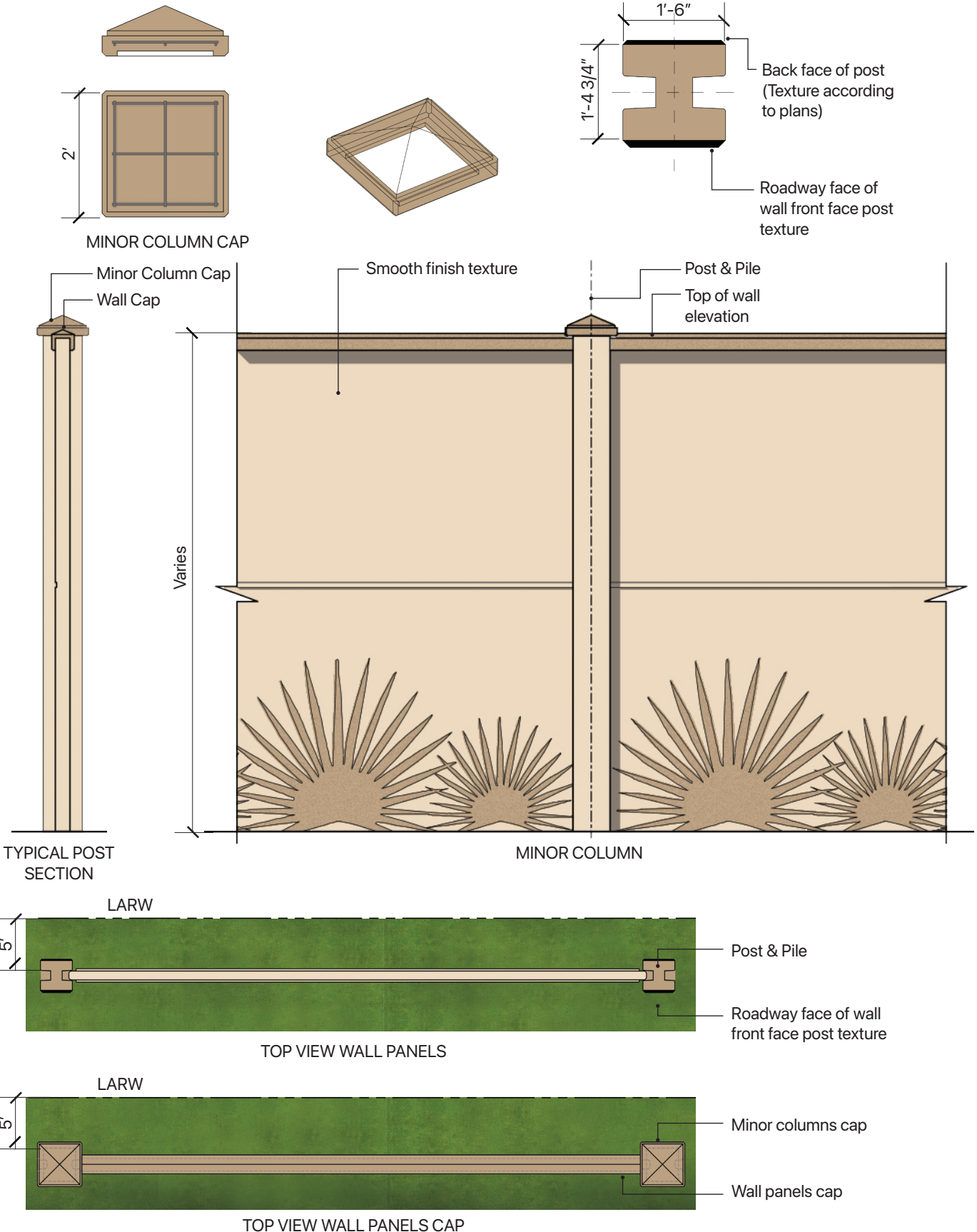


TOP VIEW



2026

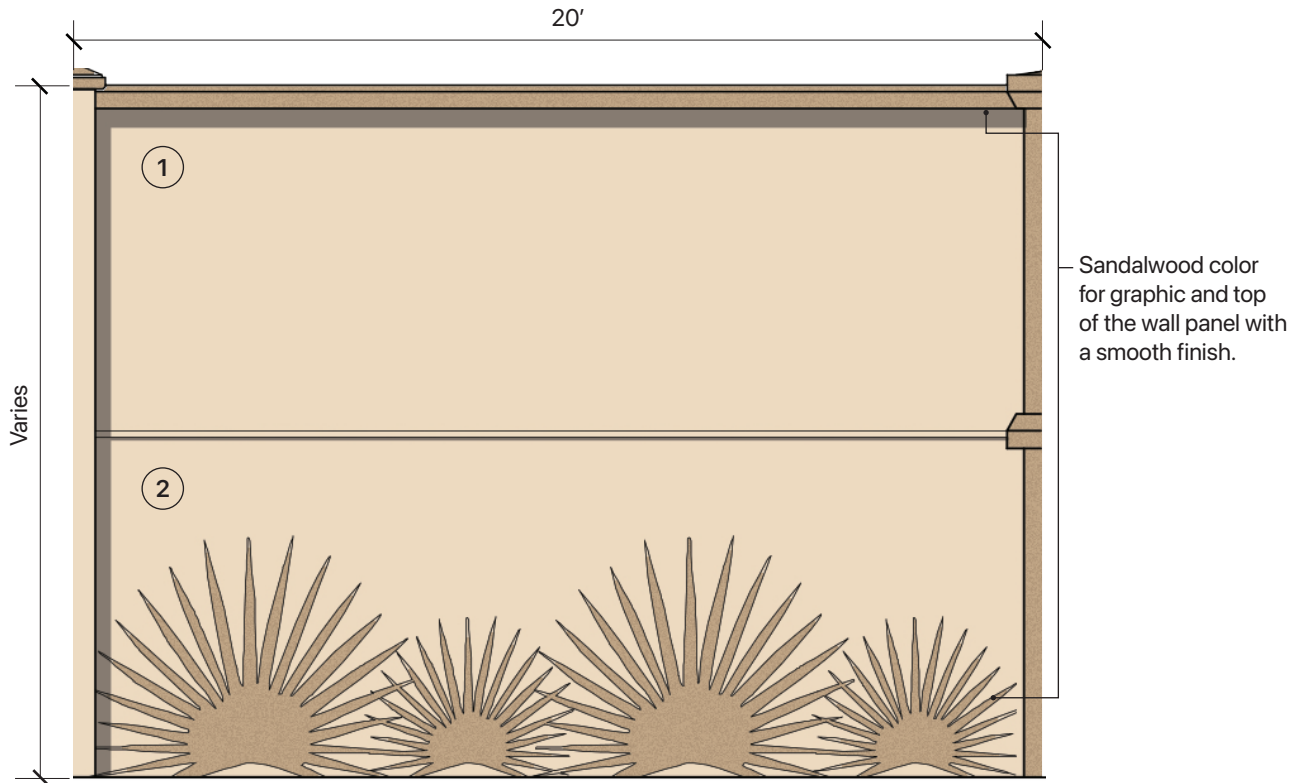
Minor Architectural Columns



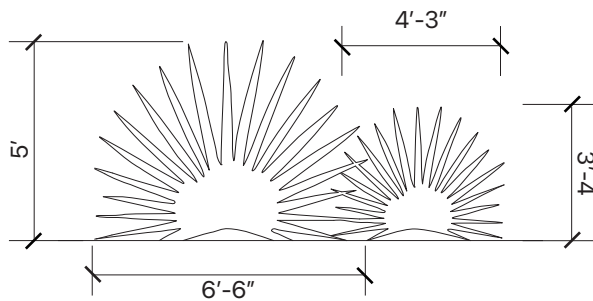


Graphic Pattern

Layout by Panel Size

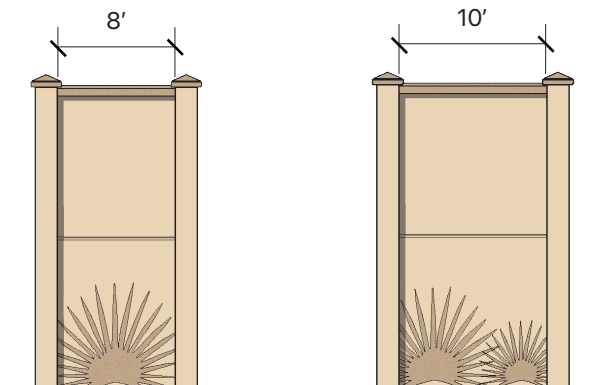


GRAPHIC WALL PANELS AT MAJOR COLUMNS



The front and back of all panels shall have a Light Tan primary coating with a smooth finish.

- ① Top Panel: No graphic; finished in Light Tan color with a smooth finish.
- ② Bottom Panel: Includes an extruded saw palmetto pattern, coated in Sandalwood color with a smooth finish.





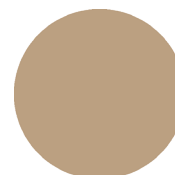
2026



Barrier Mounted Sound Walls

Concrete Barrier/Noise wall (Standard Plan 521-511).

- Standard coating color: Sandalwood with a smooth finish.
- Light Tan color for cap



Sandalwood
FS33446



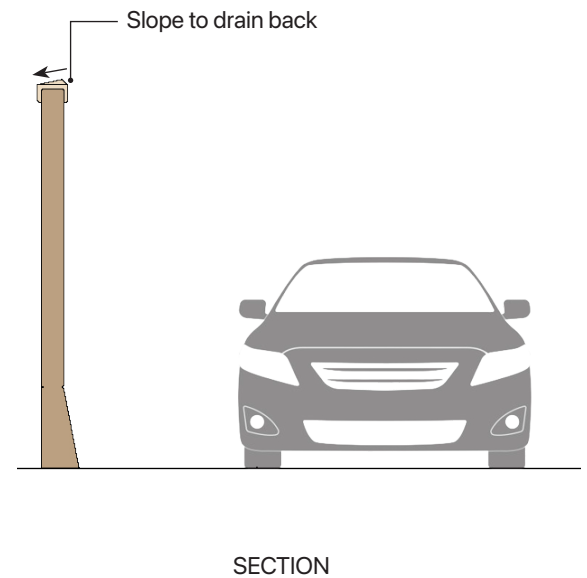
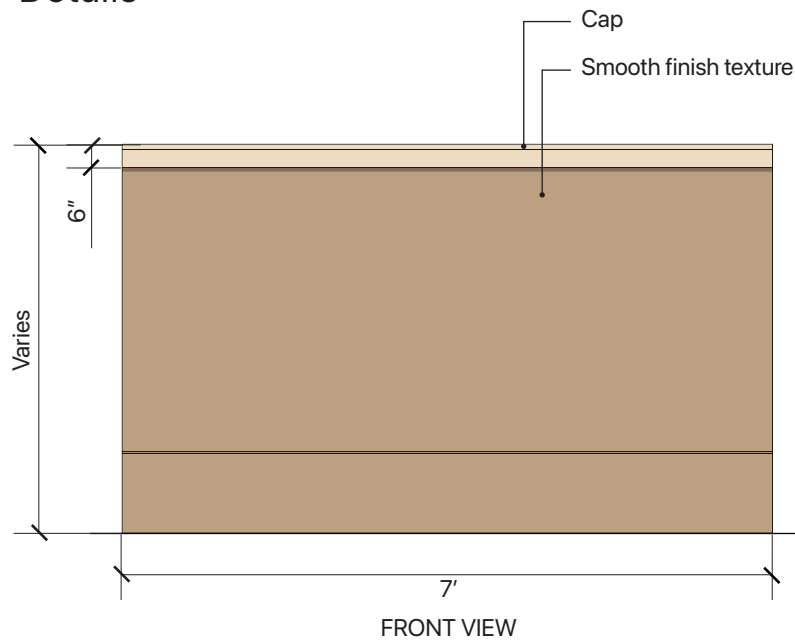
Light Tan
FS23717



2026

Barrier Mounted Sound Wall

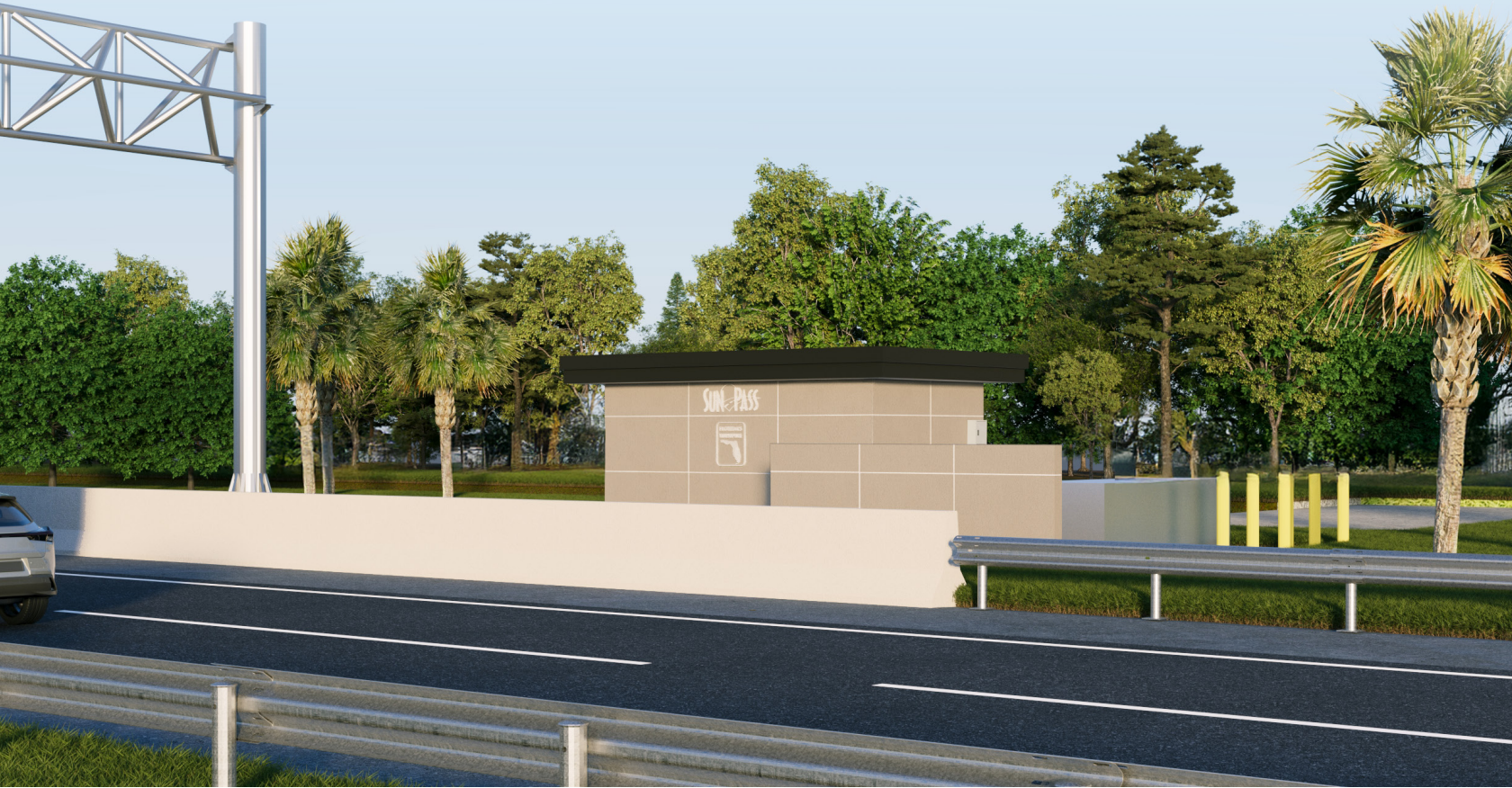
Details



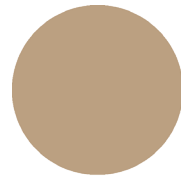
Toll Gantry



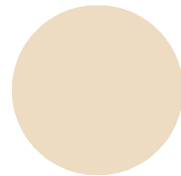
2026



These sites shall match the aesthetics of the interchange color palette. The building shall be coated Light Tan, with a Sandalwood trim, and the barrier wall shall be coated with Sandalwood. The toll gantry structure shall be uncoated steel.



Sandalwood
FS33446



Light Tan
FS23717

Post & Poles



2026



Pole-top LED fixture

Lighting

All light poles shall be uncoated aluminum with matching pole-top LED light fixtures to ensure visual consistency.

Uncoated aluminum light pole

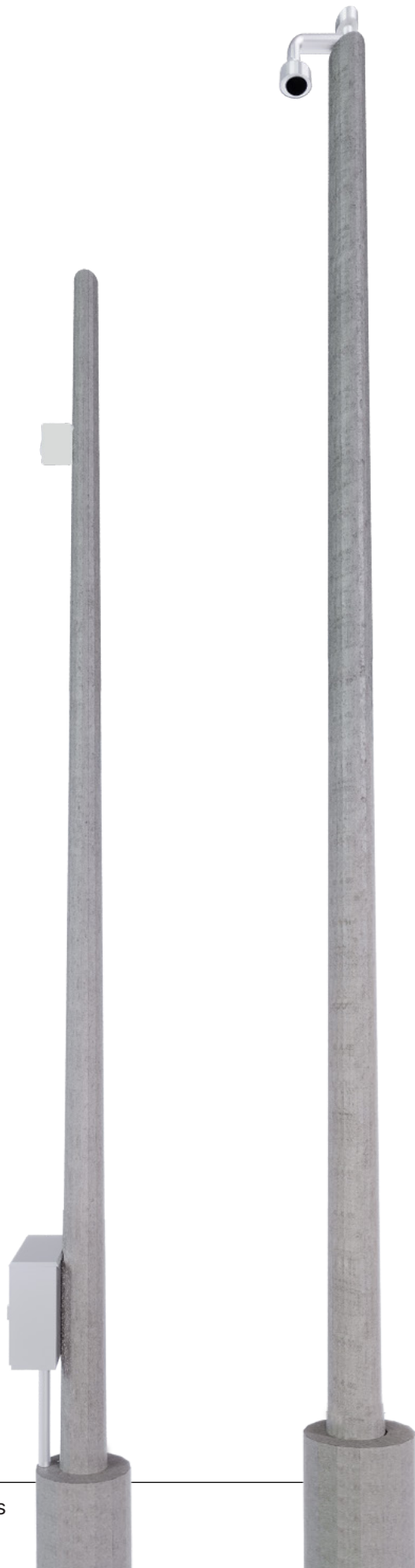


2026



ITS Equipment

All ITS poles shall be uncoated concrete, steel, or aluminum.





2026



Signs

Cantilever signs, post signs, digital message signs, safety enhancement signs and all other signs within FTE right of way shall be uncoated.





SR 91 and PGA Blvd.

Landscape Aesthetics

Landscape design shall comply with the FTE Landscape Program Master Plan.

Interchange landscape shall include a minimum of 60% Level I Landscape and a maximum of 40% Level II Landscape. Level III Landscape shall be provided only through agreements between FTE Management and local agencies.

Refer to the link below for the full description of the landscape aesthetic levels.

https://floridasturnpike.com/wp-content/uploads/2020/11/2020-Turnpike-Landscape-Program-Master-Plan_2020-09-23.pdf

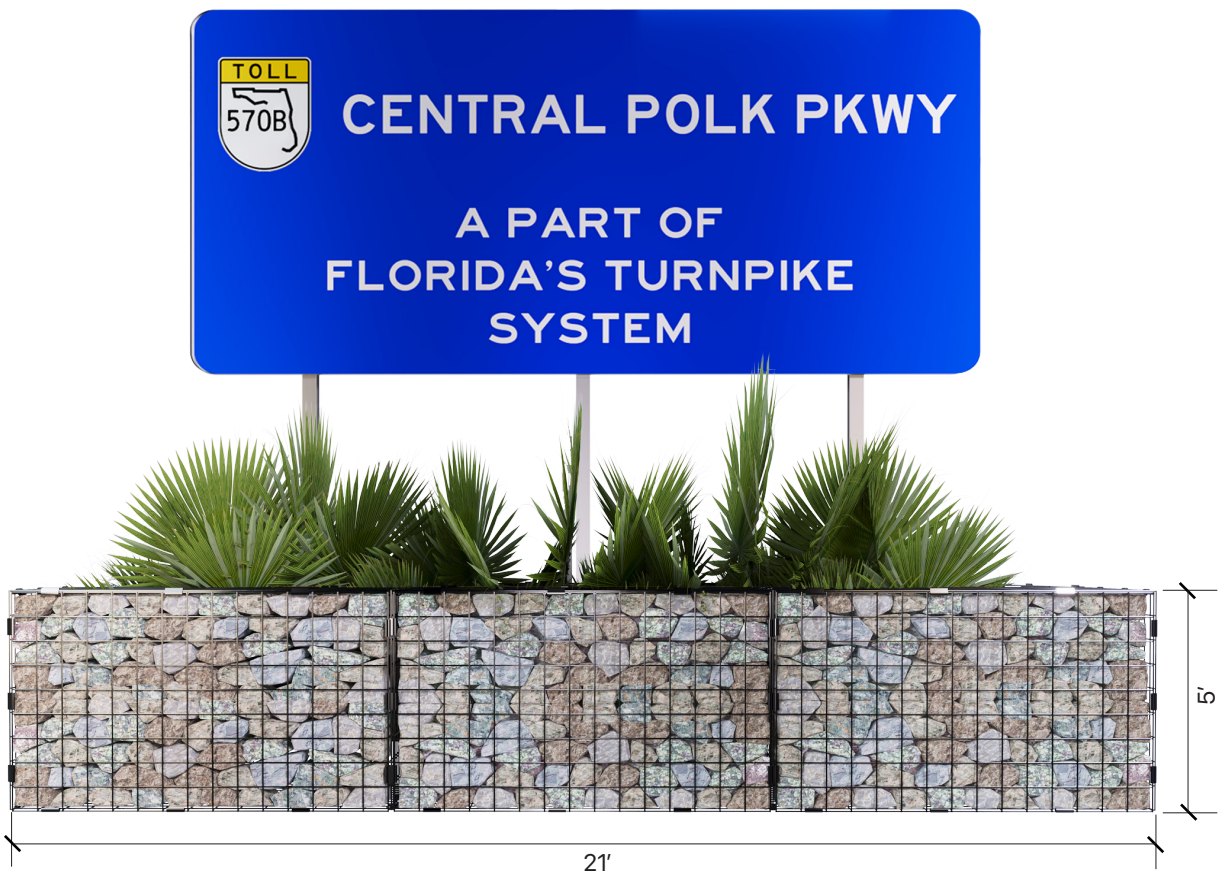


Gateway Signs

Provide landscape aesthetics around gateway signs. Multi-column (post) ground signs shall be surrounded by native and low-maintenance landscape plantings. (Standard Plan 700-2-117).



2026



Gateway Signs

Provide landscape and hardscape aesthetic features around gateway signs. Hardscape features must maintain access for maintenance inspection of sign base.

Example shown is a multi-column (post) ground sign accented by gabion baskets filled with natural stone, adding both texture and durability to the overall design. Native and low-maintenance landscape elements are incorporated with a gabion planter, softening the view of the sign structure. (Standard plan 700-2-117).



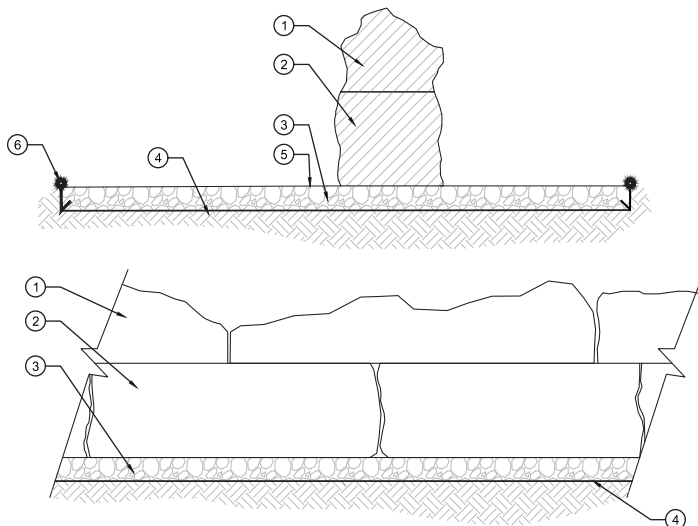
2026



I-75 - SR 582

Natural Stone Features

Cap rock edging or natural stone edging may be used to elevate landscape features.



1. Cut cap rock with natural edge. min. length 36", min. 4" at thinnest end, and min. of 8" at thickest end. middle of or end of rock may exceed 8".
2. Cut cap rock, 12"x12"-14"x36".
3. Rock bedding, width varies.
4. Heavy duty filter fabric non-woven.
5. Finished grade.
6. 6" black plastic edging.



2026



Suntrax Blvd.

Decorative Retaining Walls

Cap rock edging or natural stone edging may be used to elevate landscape features.

Fountains



2026

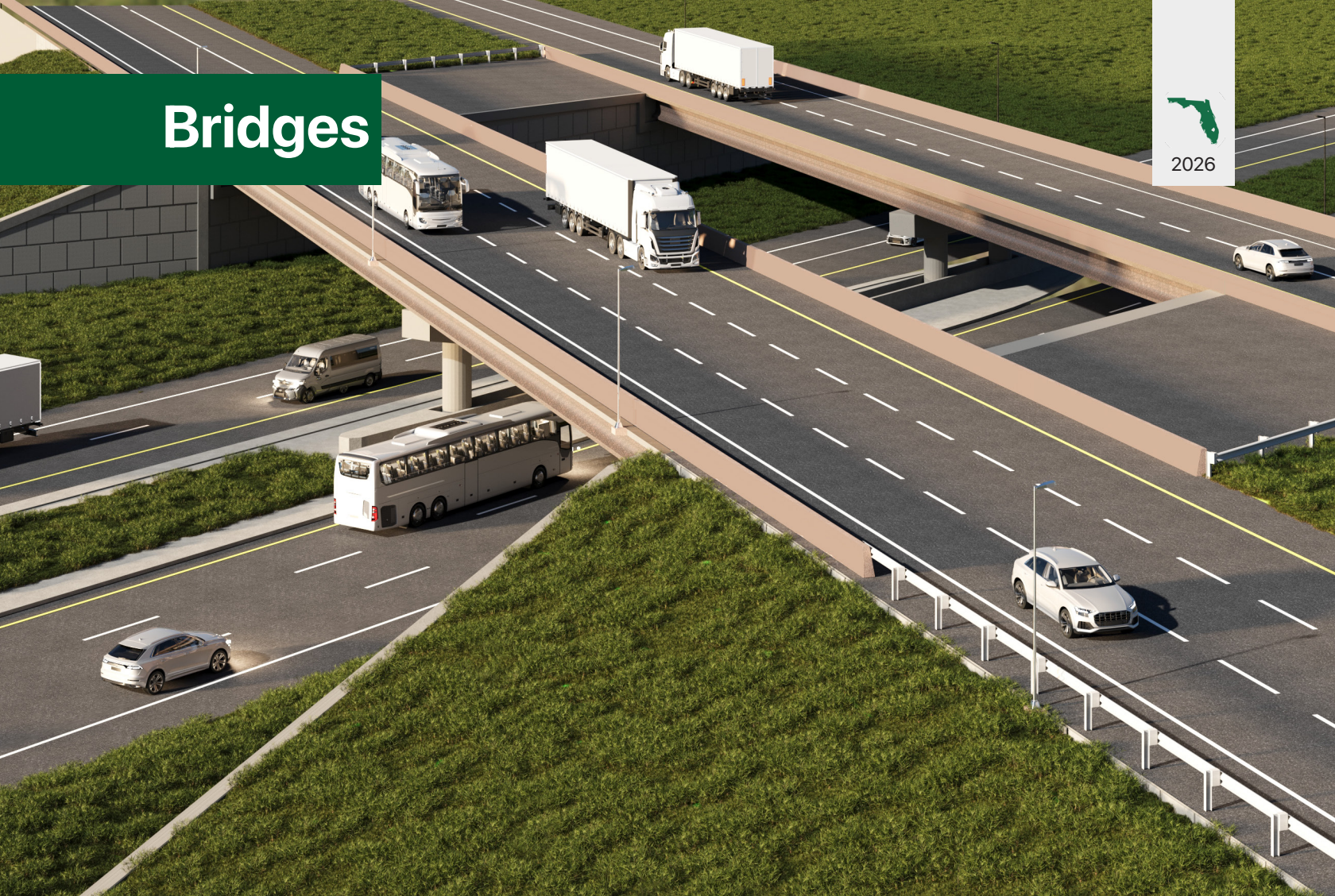


Fountains are a specialty feature and require approval from FTE Management.



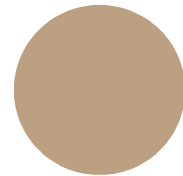
Urban Mainline

Bridges



Coatings and Textures

All new bridges crossing FTE LARW shall maintain FTE colors designated in the Interchange chapter of this document. Existing local agency bridges with established colors may maintain existing color coatings.

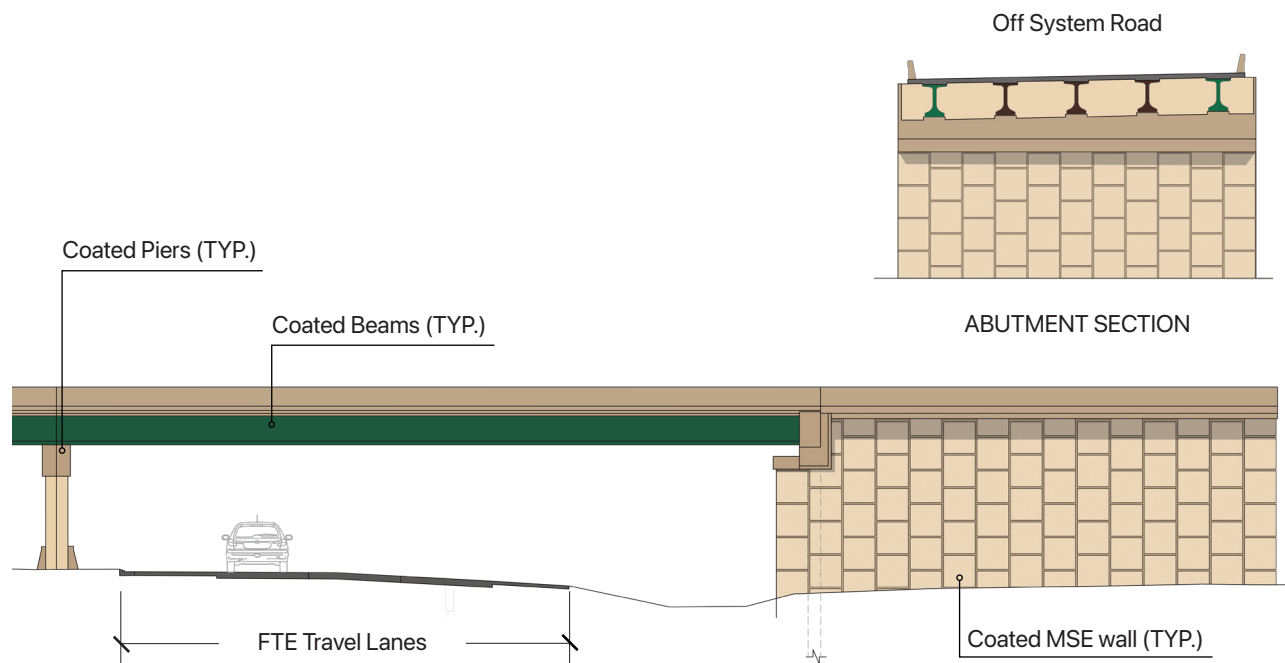
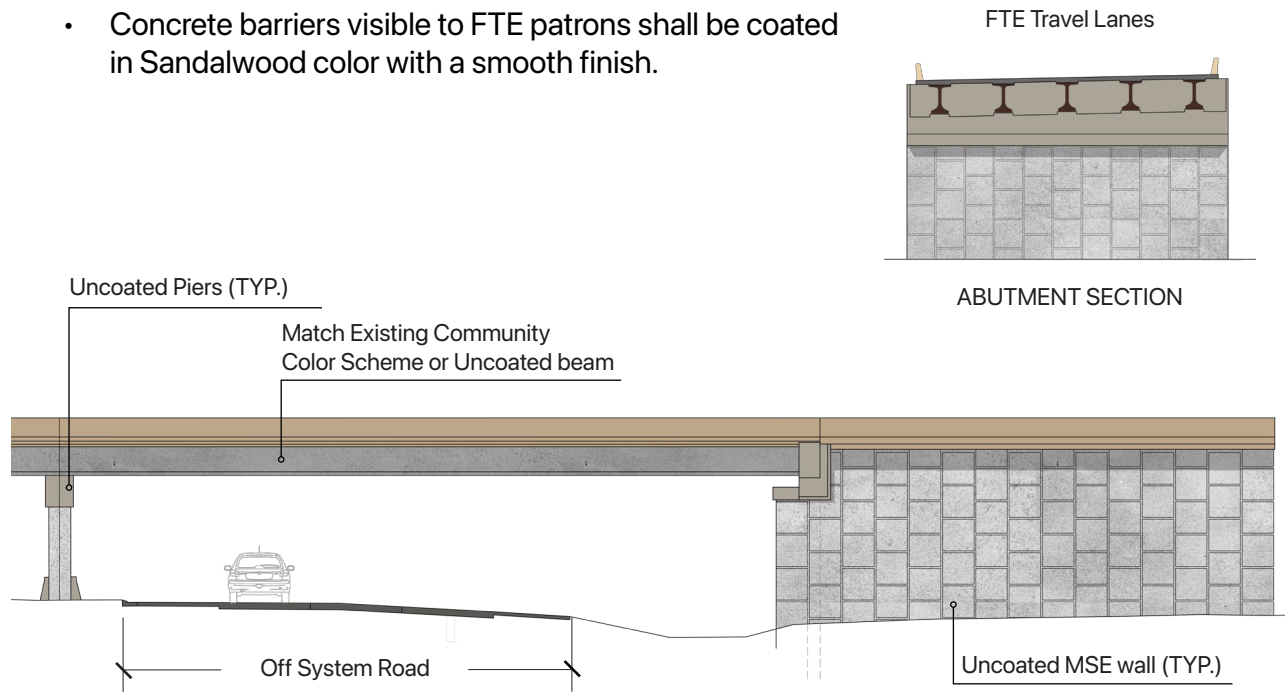


Sandalwood
FS33446

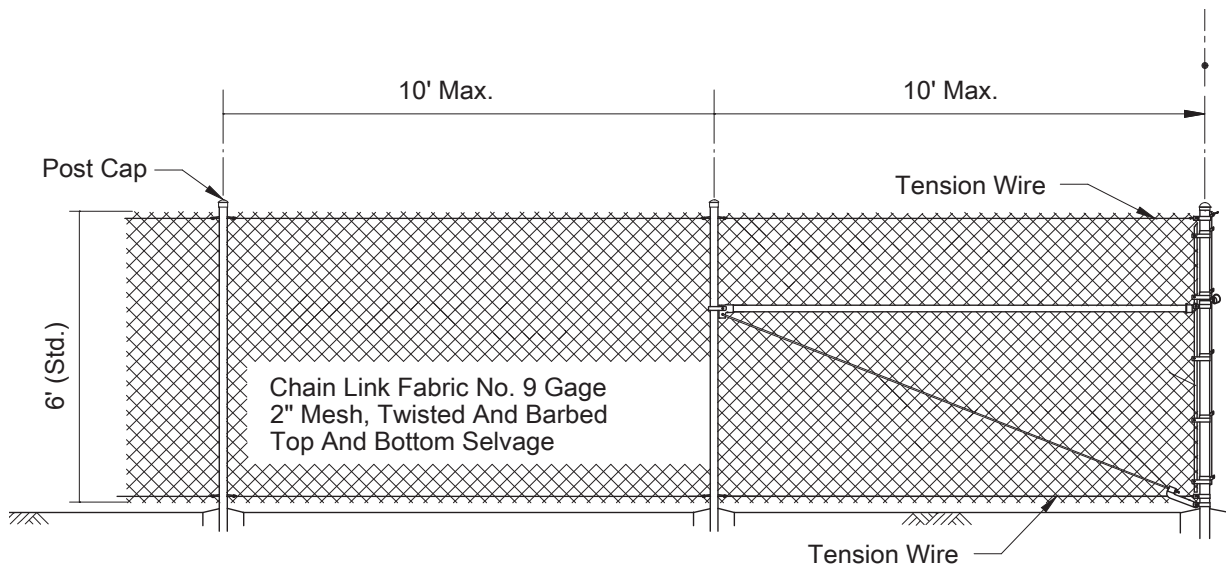


All bridge components visible to FTE patrons shall be coated.
Refer to the interchange bridge section for coating and texture details.

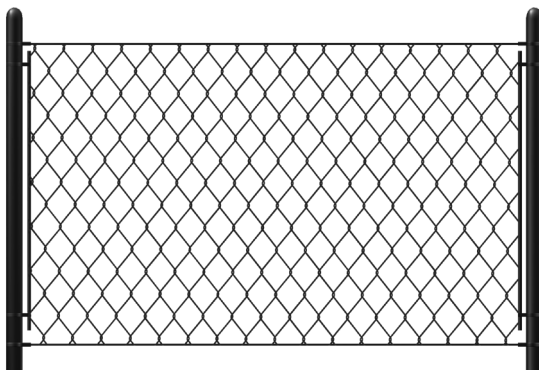
- Concrete barriers visible to FTE patrons shall be coated in Sandalwood color with a smooth finish.



All new pedestrian fencing on local agency facilities shall match the FTE Aesthetic Guidelines.



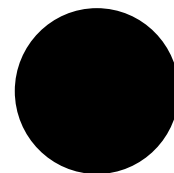
ELEVATION DETAIL



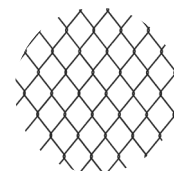
ELEVATION

Chain Link Right of Way Fencing

All right of way fencing shall be a black coated chain link fence. (Type B, Standard Plan 550-002).



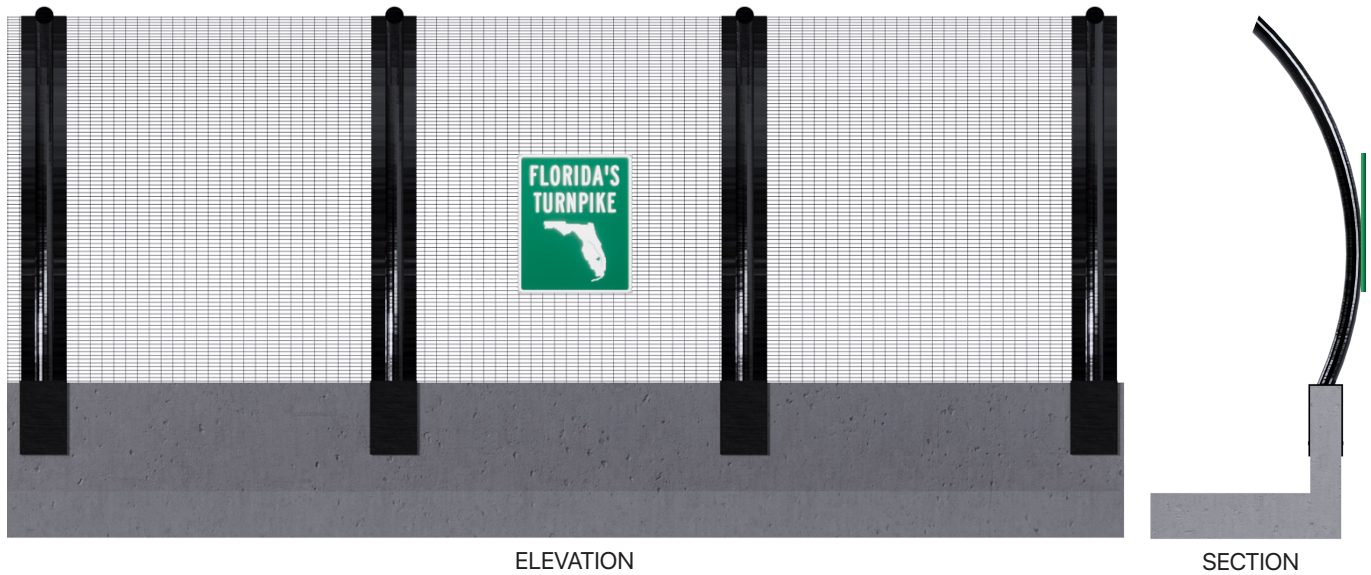
Black
FS17038



Detail:
Coated chain link
fence fabric

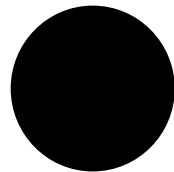


2026

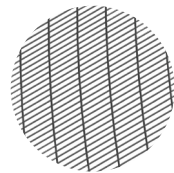


Welded Wire Curve Pedestrian Bridge Fencing

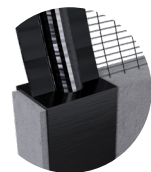
The limits of pedestrian fencing extend from the beginning of the approach slab at the start of the bridge to the end of the approach slab at the end of the bridge. There is no Standard Plan for this fence type, a TSP will be required.



Black
FS17038



Detail:
Coated welded wire
fence fabric



Post Connection



Noise/Visual Barrier Walls

All walls details shall be the same for all roadway types. Refer to Interchange chapter, noise/visual barrier section, herein for wall aesthetic details.



Barrier Mounted Sound Walls

All walls details shall be the same for all roadway types. Refer to Interchange chapter, noise/visual barrier wall section, herein for wall aesthetic details.



Equipment

For equipment coatings (posts, poles, ITS equipment, lighting and signs) refer to Interchanges chapter, posts & poles section, herein.



I-4 at SR 570 Interchange.

Landscape Aesthetics

Landscape design shall comply with the FTE Landscape Program Master Plan.

Urban mainline landscape shall consist of no less than 60% Level I Landscape and a maximum of 40% Level II Landscape.

Landscape on the urban mainline serves to provide a visual barrier to poor off-system views and to enhance the FTE patron experience. Landscape also provides visual screening to adjacent developments that do not qualify for a noise wall.

Refer to the link below for the full description of the landscape aesthetic levels.

https://floridasturnpike.com/wp-content/uploads/2020/11/2020-Turnpike-Landscape-Program-Master-Plan_2020-09-23.pdf



2026

Rural Mainline

SR 570 at MM 15

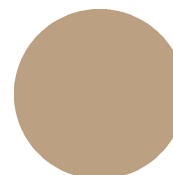


SR 589 and Oak Park Blvd.

Coatings and Textures

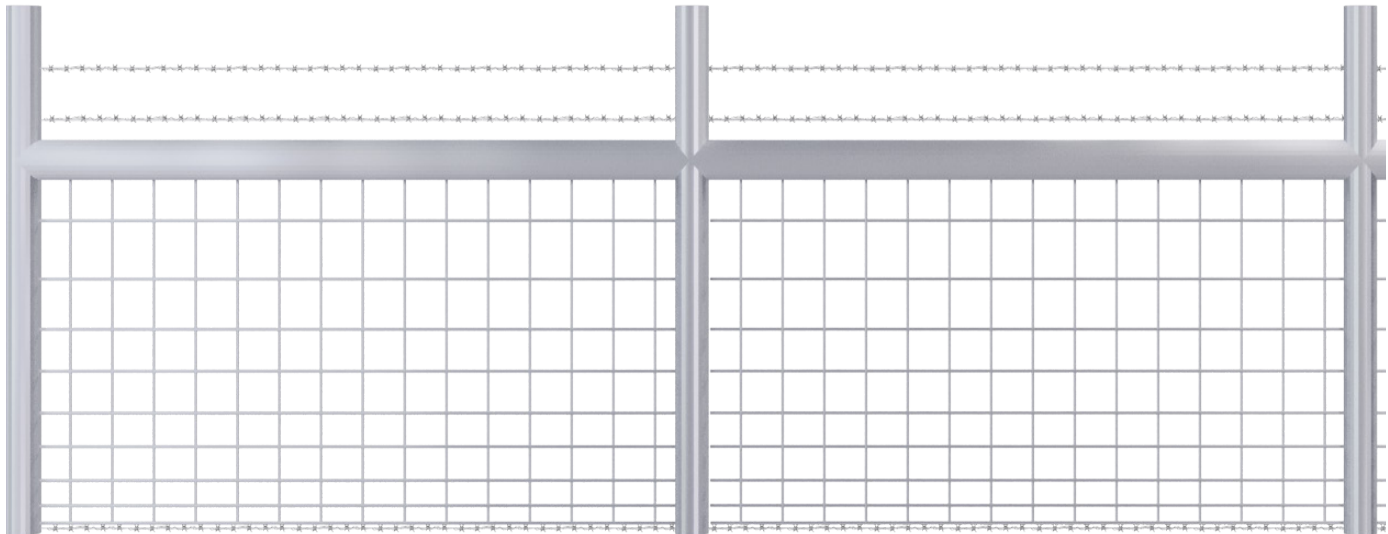
All new bridges crossing the FTE LARW shall use the FTE colors designated in the interchange section of this document. Existing local agency bridges with established colors may maintain existing color coatings.

- Concrete barriers on FTE shall be coated in Sandalwood color with a smooth finish.

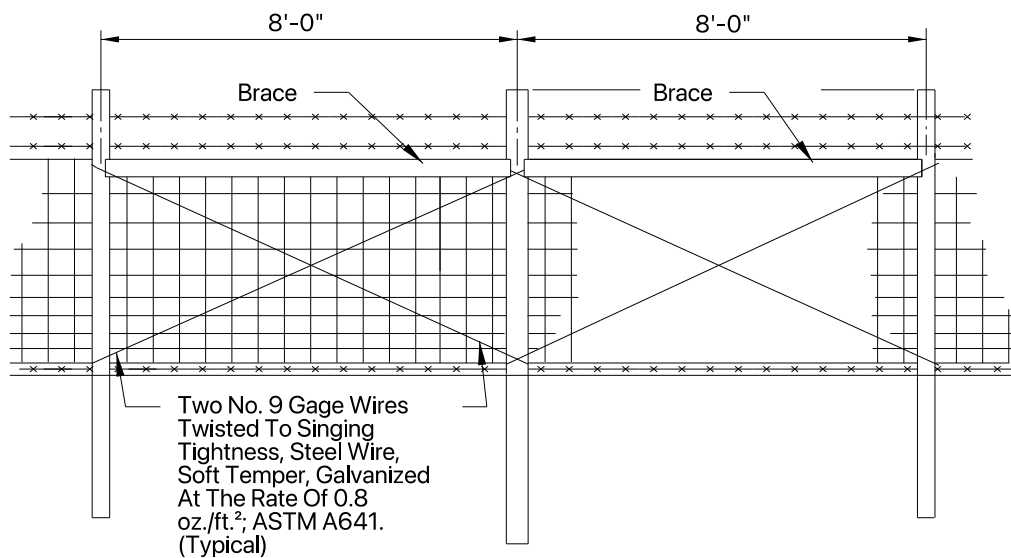


Sandalwood
FS33446

All fencing components within the limits of the rural mainline shall be uncoated. Fence material will consist of chain link or woven wire.



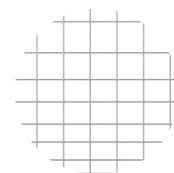
ELEVATION



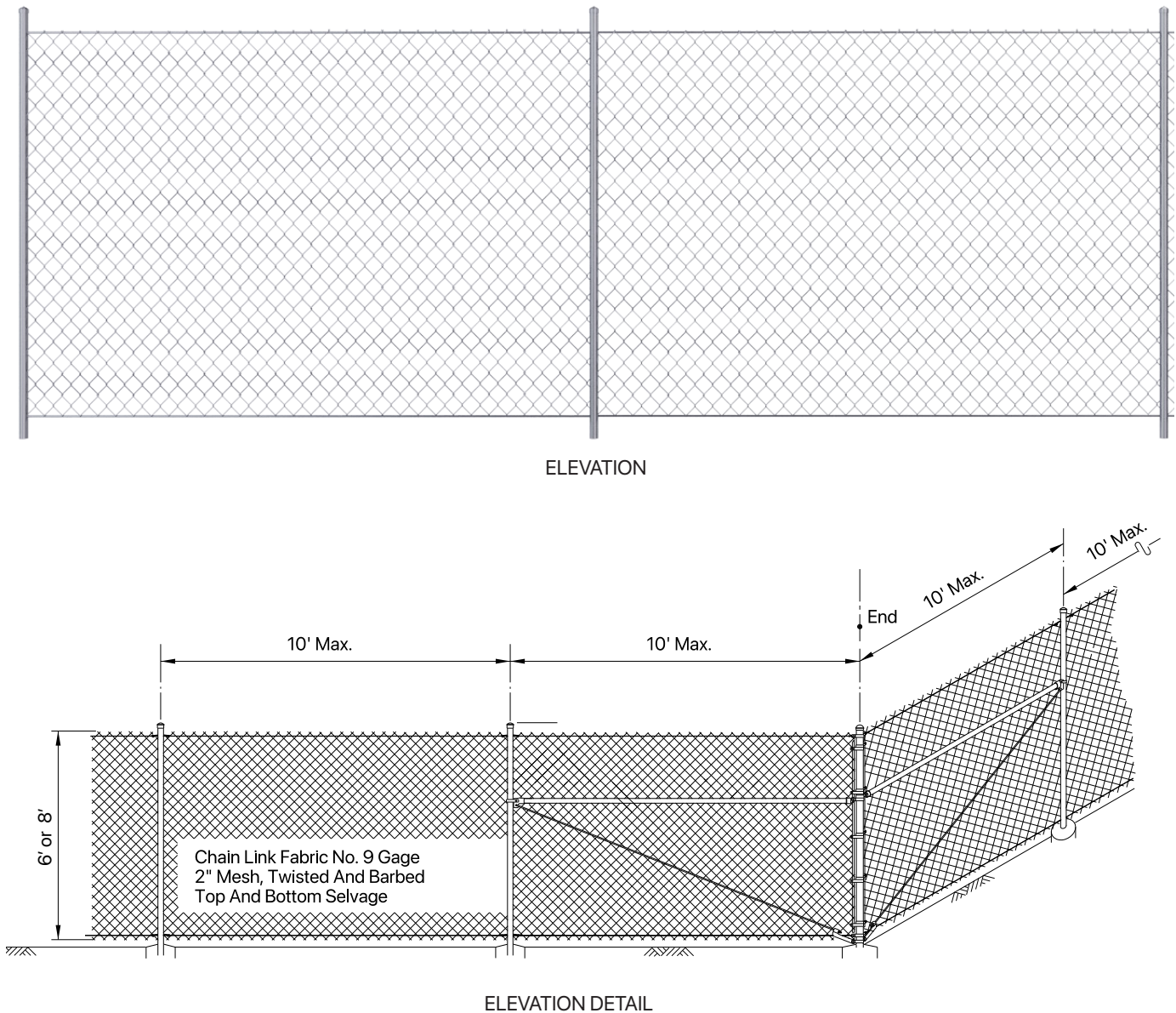
ELEVATION DETAIL

Type A Fencing

All right of way fence shall be a uncoated woven wire.
(Type A, Standard Plan 550-001).



Detail:
Uncoated woven wire
fence fabric



Type B Fencing

Type B fence to be provided in rural areas. (Standard Plan 550-002).

- Right of way fence to be 6' uncoated chain link fence (Type B).
- Wildlife fencing to be 8' uncoated chain link fence (Type B).
- Additional wildlife fencing details may be required depending on the presence of specific critical species. These additional details will require a TSP.

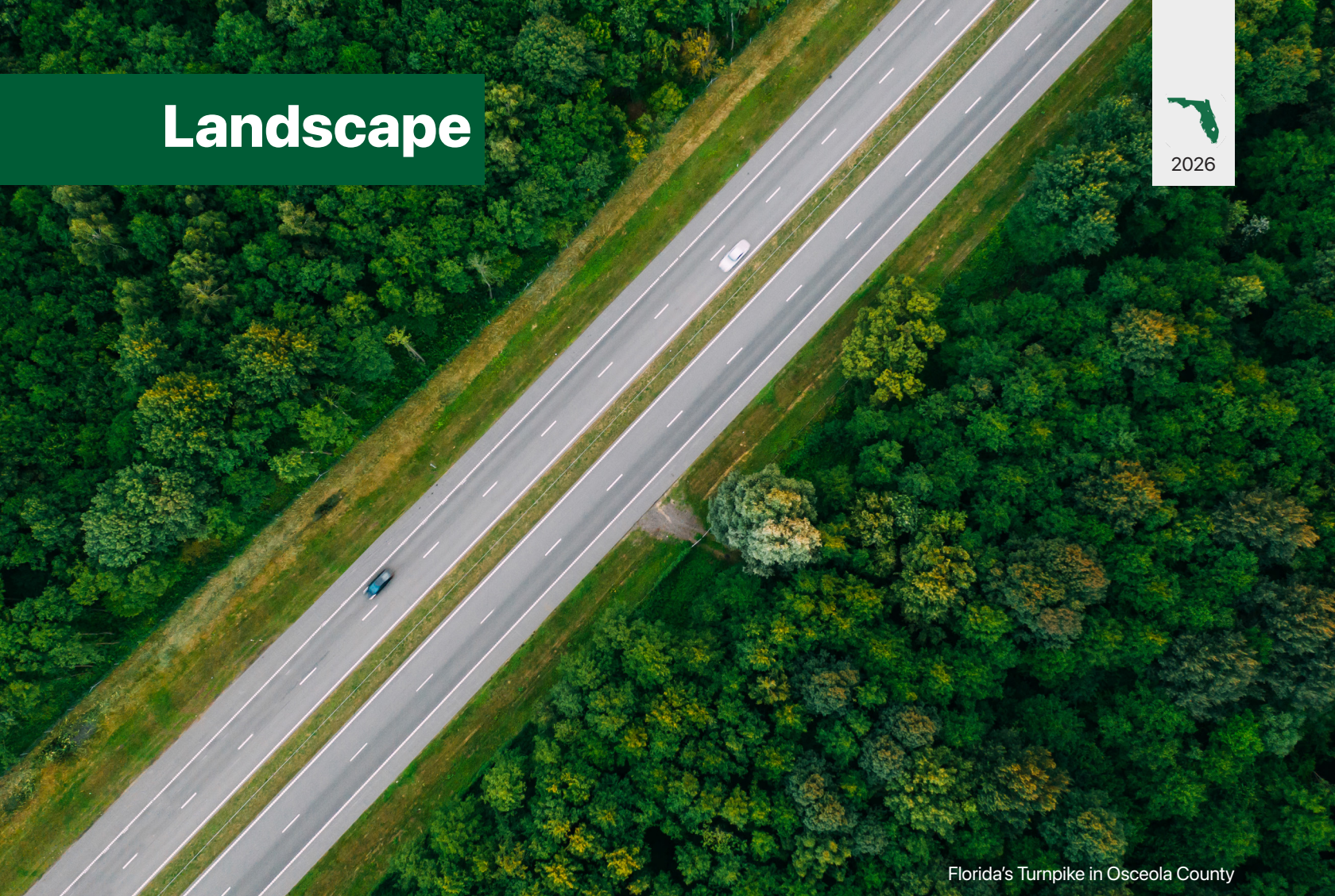


Detail:
Uncoated chain link
fence fabric



Equipment

For equipment coatings (posts, poles, ITS equipment, lighting and signs) refer to Interchanges chapter, posts & poles section, herein.



Florida's Turnpike in Osceola County

Landscape Aesthetics

Landscape design shall comply with the FTE Landscape Program Master Plan.

Rural mainline landscape shall consist of 100% Level I Landscape. Landscape on the rural mainline is limited to providing landscape visual buffers to poor off-system views to enhance the FTE patrons experience. Landscape also provides visual screening to isolated residential developments.

Refer to the link below for the full description of the landscape aesthetic levels.

https://floridasturnpike.com/wp-content/uploads/2020/11/2020-Turnpike-Landscape-Program-Master-Plan_2020-09-23.pdf



2026

Service Plazas

Okahumpka Service Plaza



Okahumpka Service Plaza

Landscape Aesthetics

Landscape design shall comply with the FTE Landscape Program Master Plan.

Plaza entry landscape shall include a minimum of 60% Level I Landscape and a maximum of 40% Level II Landscape.

Level III Landscape shall be provided only through approvals with FTE Management.

Refer to the link below for the full description of the landscape aesthetic levels.

https://floridasturnpike.com/wp-content/uploads/2020/11/2020-Turnpike-Landscape-Program-Master-Plan_2020-09-23.pdf



Ecosense lighting Inc.



F080 Single



Ecosense lighting Inc.

External LED Lighting Specialty Lighting

Utilize accent lighting to illuminate signs, hardscape features, and landscape elements.



Monument Signs

Service plaza monument signs feature graphics that reflect the unique identity of the service plazas and their surrounding geographical context.

Monument signs shall be located at the north and south entrances of the plazas and shall incorporate architectural materials consistent with those used in the service plaza facilities. All monument signs concepts shall be approved by FTE Management.



2026



Decorative Retaining Walls

Cap rock edging or natural stone edging may be used to elevate landscape features.

Fountains



2026



FTE Headquarters at Turkey Lake Service Plaza

Fountains are a specialty feature and require approval from FTE Management.



Equipment

For equipment coatings (posts, poles, ITS equipment, lighting and signs) refer to Interchanges chapter, posts & poles section, herein.



2026



Signs

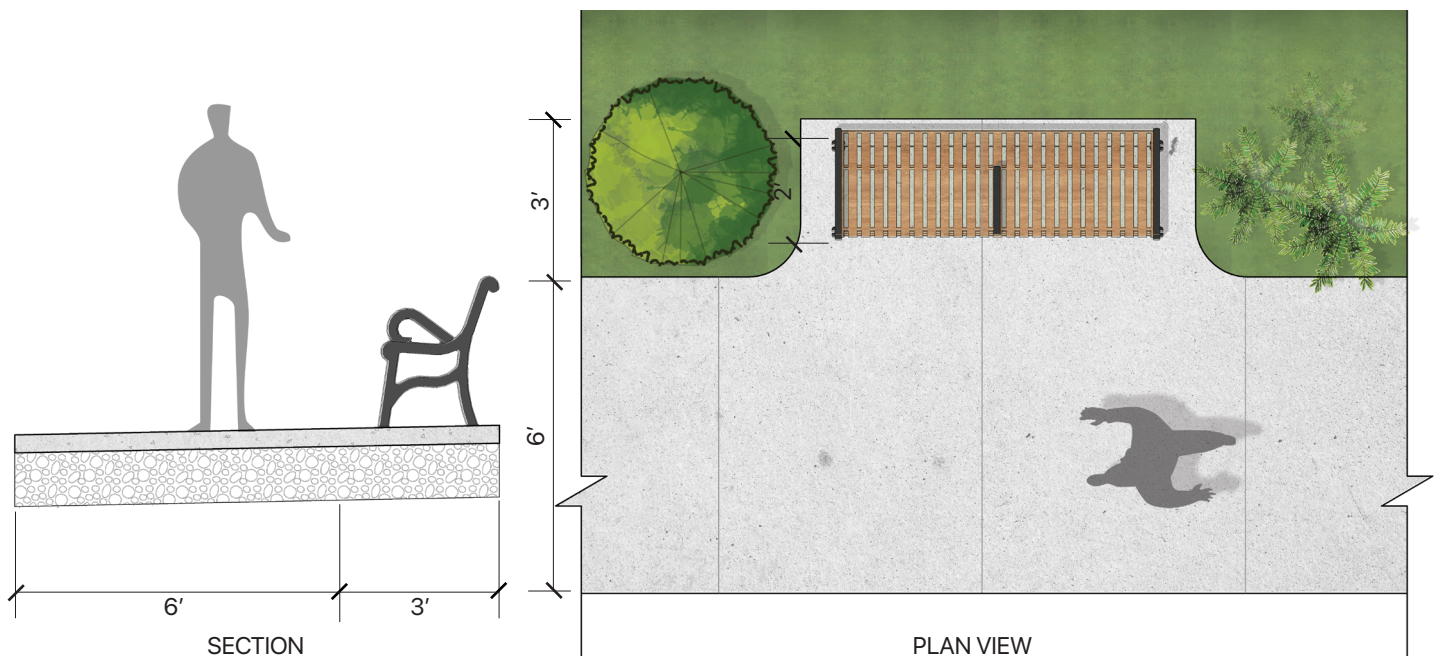
Informational signs provided at FTE service plaza shall be black coated. These signs may be announcing FTE improvement projects and updates, historic information, or regional messaging.

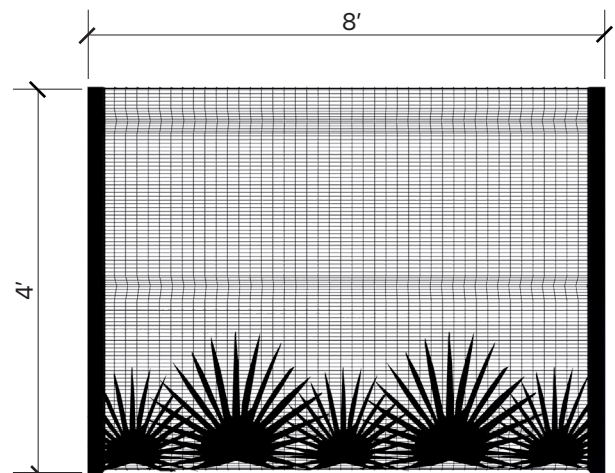
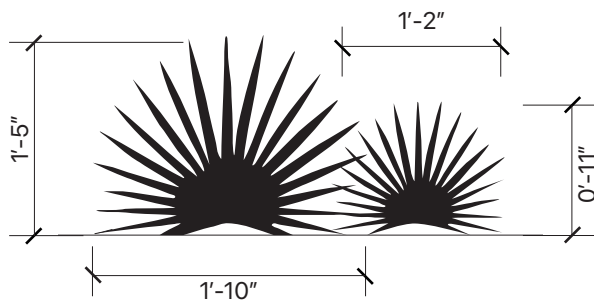
Pedestrian Facilities



Service plaza walking paths shall be constructed per Standard Plan Index 522-001. Provide seating areas with shade trees every 150'. Seating areas shall contain one 6' surface mounted bench and a minimum of three trees.

Walking Path + Seating Area



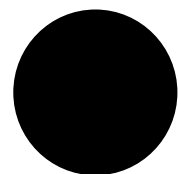


ELEVATION

Dog Facility Fencing

Fencing shall be 4' welded wire. There is no Standard Plan for this fence type, a TSP is required.

- Standard coating color: Black.
- FTE sign shall be public facing and a minimum of one per facility.


 Black
FS17038

